

# April 2018

Fire - Performance Measure Data *					
Response District	Total Calls in District	Greater than 20 min. Response Time	Calls Handled by other agency	Longest Response Time	Overall Station Benchmark %
New Church	6	0	0	0:15:27	100.0%
Greenbackville	1	0	0	0:07:32	100.0%
Chincoteague	4	0	0	0:10:44	100.0%
Atlantic	5	0	0	0:14:39	100.0%
Saxis	1	0	0	0:09:23	100.0%
Bloxom	13	0	0	0:15:49	100.0%
Parksley	9	0	0	0:14:45	100.0%
Tasley	3	0	1	0:09:11	100.0%
Onancock	13	0	0	0:15:11	100.0%
Melfa	6	2	1	0:24:42	66.7%
Wachapreague	1	0	0	0:03:38	100.0%
Painter	5	0	0	0:09:52	100.0%
Tangier	0	0	0	0	#DIV/0!
<b>System Totals</b>	<b>67</b>	<b>2</b>	<b>2</b>	<b>0:24:42</b>	<b>97.0%</b>

EMS - Performance Measure Data						
Response District	Total Calls in District	Greater than 20 min. Response Time	Longest Response Time	Calls Handled by other agency	Station Benchmark Compliance %	Overall Station Reliability %
Greenbackville	18	2	0:21:16	12	88.9%	33.3%
Chincoteague	65	1	0:32:52	8	98.5%	87.7%
Saxis	14	0	0:13:22	1	100.0%	92.9%
Bloxom	38	1	0:20:16	4	97.4%	89.5%
Parksley	76	0	0:13:11	4	100.0%	94.7%
Onancock	65	0	0:17:48	5	100.0%	92.3%
Melfa	34	0	0:14:44	3	100.0%	91.2%
Wachapreague (Painter)	39	1	0:22:14	5	97.4%	87.2%
Oak Hall	72	0	0:14:40	8	100.0%	88.9%
Tangier	10	0	0:14:18	0	100.0%	100.0%
Community (Exmore)	13	0	0:14:55	2	100.0%	84.6%
<b>System Totals</b>	<b>444</b>	<b>5</b>	<b>0:32:52</b>	<b>52</b>	<b>98.9%</b>	<b>88.3%</b>

	Station Giving Aid														
	Greenbackville	Chincoteague	Saxis	Bloxom	Parksley	Onancock	Melfa	Wachapreague/Painter	Oak Hall	Community (Exmore)	Northampton	Wallops	NORS	2nd Call	3rd Call
Greenbackville									11					12	
Chincoteague									8					8	
Saxis									1				1		
Bloxom			1											4	
Parksley				3		1							2	2	
Onancock					1		4						3	2	
Melfa						2		1					1	2	
Wachapreague (Painter)						1	4						2	3	
Oak Hall	2	1		5									1	6	1
Community (Exmore)								2					2		
Northampton Co.															
Wallops															
<b>Totals</b>	<b>2</b>	<b>1</b>	<b>1</b>	<b>9</b>	<b>3</b>	<b>5</b>	<b>8</b>	<b>3</b>	<b>20</b>	<b>0</b>	<b>0</b>	<b>0</b>	<b>24</b>	<b>27</b>	<b>1</b>

Hospital Destination by Unit	Station Receiving Aid		
	Riverside - Shore Memorial	PRMC	Other
Greenbackville	1	4	
Chincoteague	14	25	
Saxis	10	2	
Bloxom	24	1	
Parksley	49		
Onancock	45		
Melfa	29		
Wachapreague (Painter)	29		
Oak Hall	31	21	
Wallops			
<b>Totals</b>	<b>232</b>	<b>53</b>	<b>0</b>

**Benchmark** = The Accomack County Board of Supervisors established a 20 minute standard for emergency response.

**NORS** = No Response by station or the call was handled by another station or agency.

**2nd Call** = 2nd ambulance call received while first ambulance was on another call.

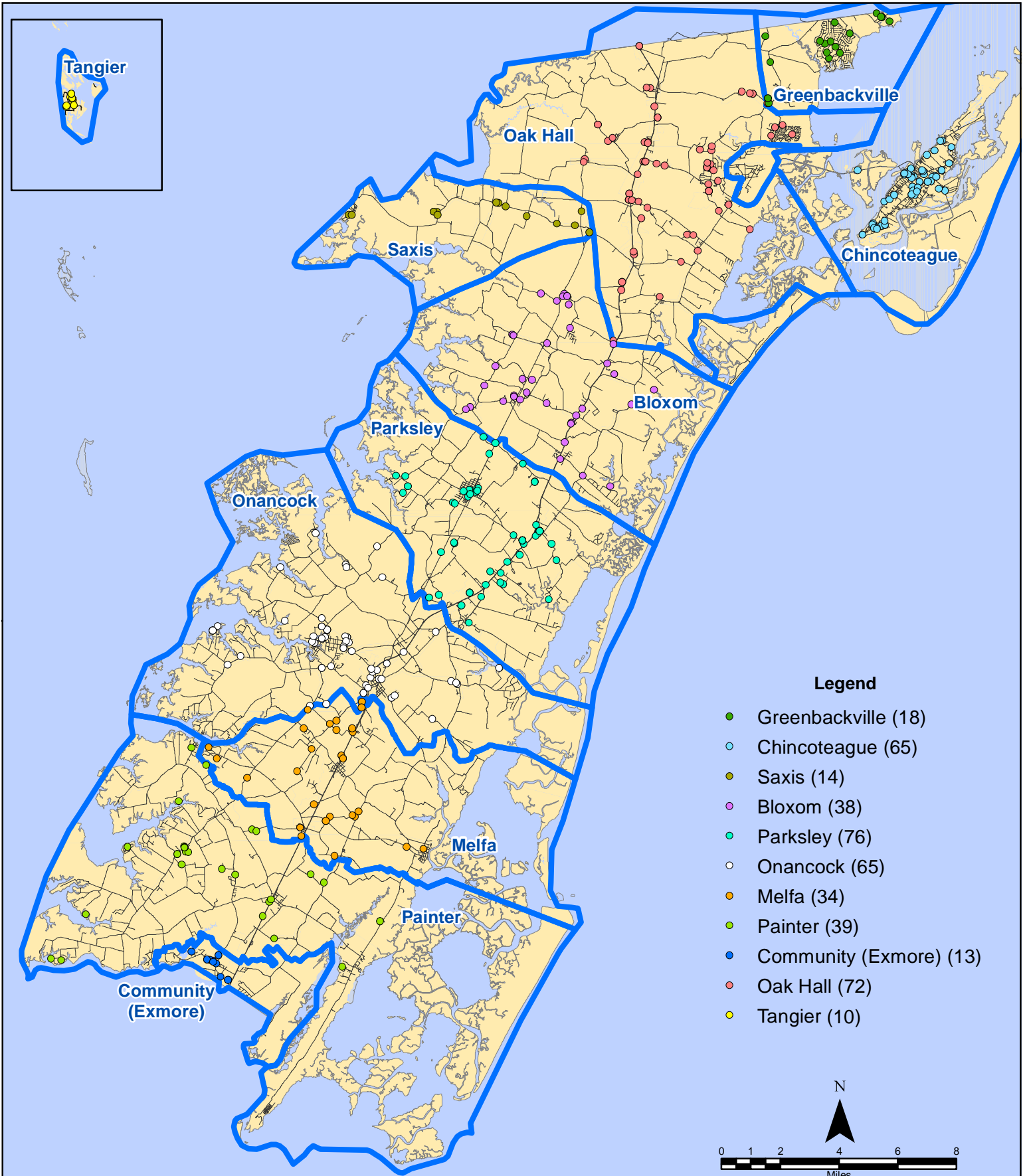
**3rd Call** = 3rd ambulance call received while first & second ambulances were on other calls.

\* This data excludes F1 Med (Medical Assist) calls in the Fire Data.

This information was prepared using data supplied by the Eastern Shore of Virginia 911 Center. This information is original incident data only and may not be representative of all units and/or stations who responded to an incident.

Station Receiving Aid

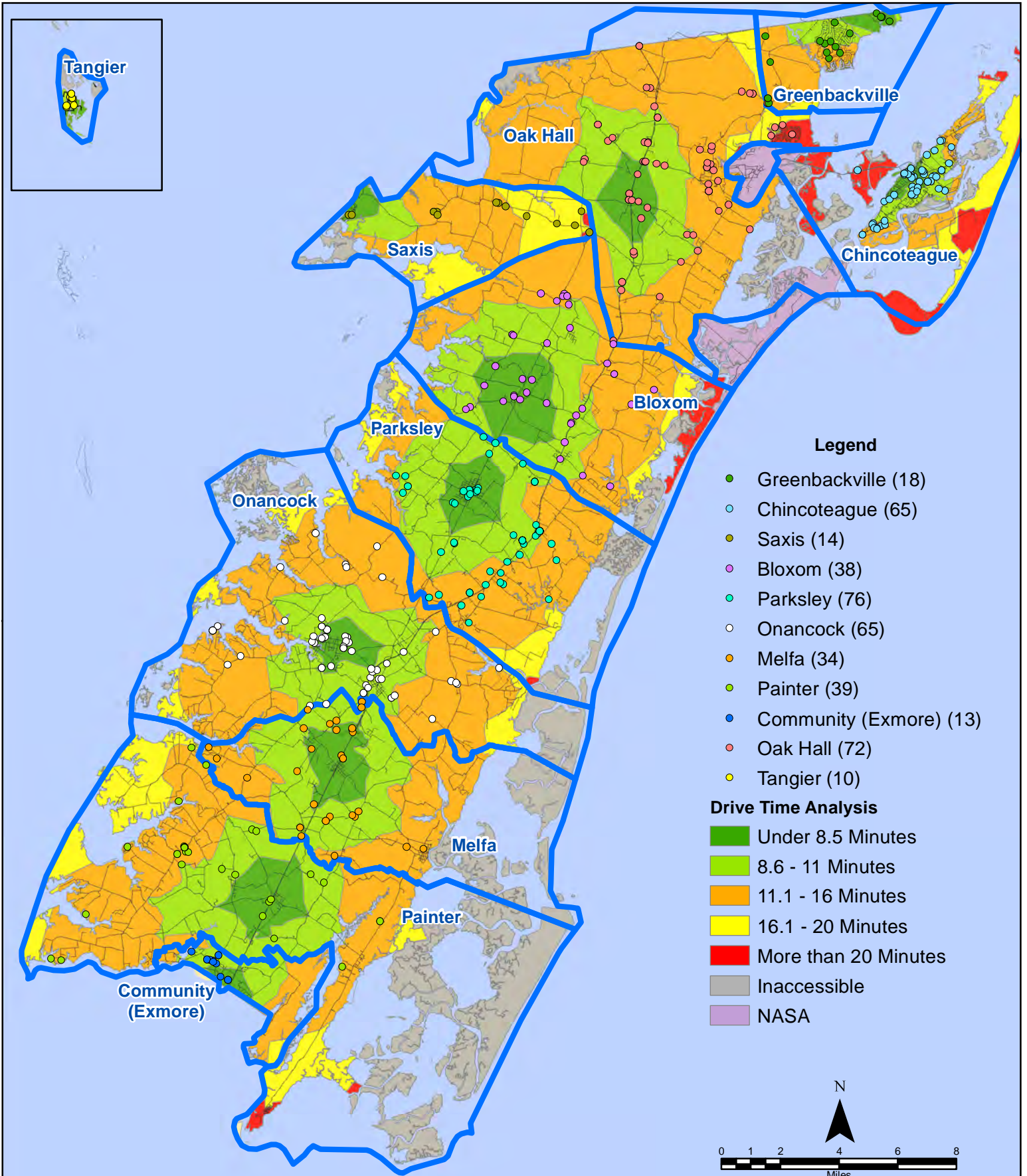
# April 2018 EMS Calls By District



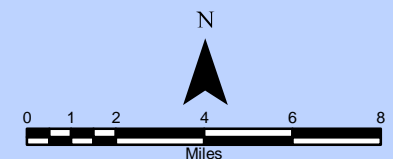
All points are plotted using X and Y coordinates provided by the ESVA 911 Center.  
Points may be plotted over one another when they are in close proximity.

Map Prepared by the Accomack County Department of Building, Planning & Economic Development using data from the ESVA 911 Center.- May 10, 2018

# April 2018 EMS Calls By District

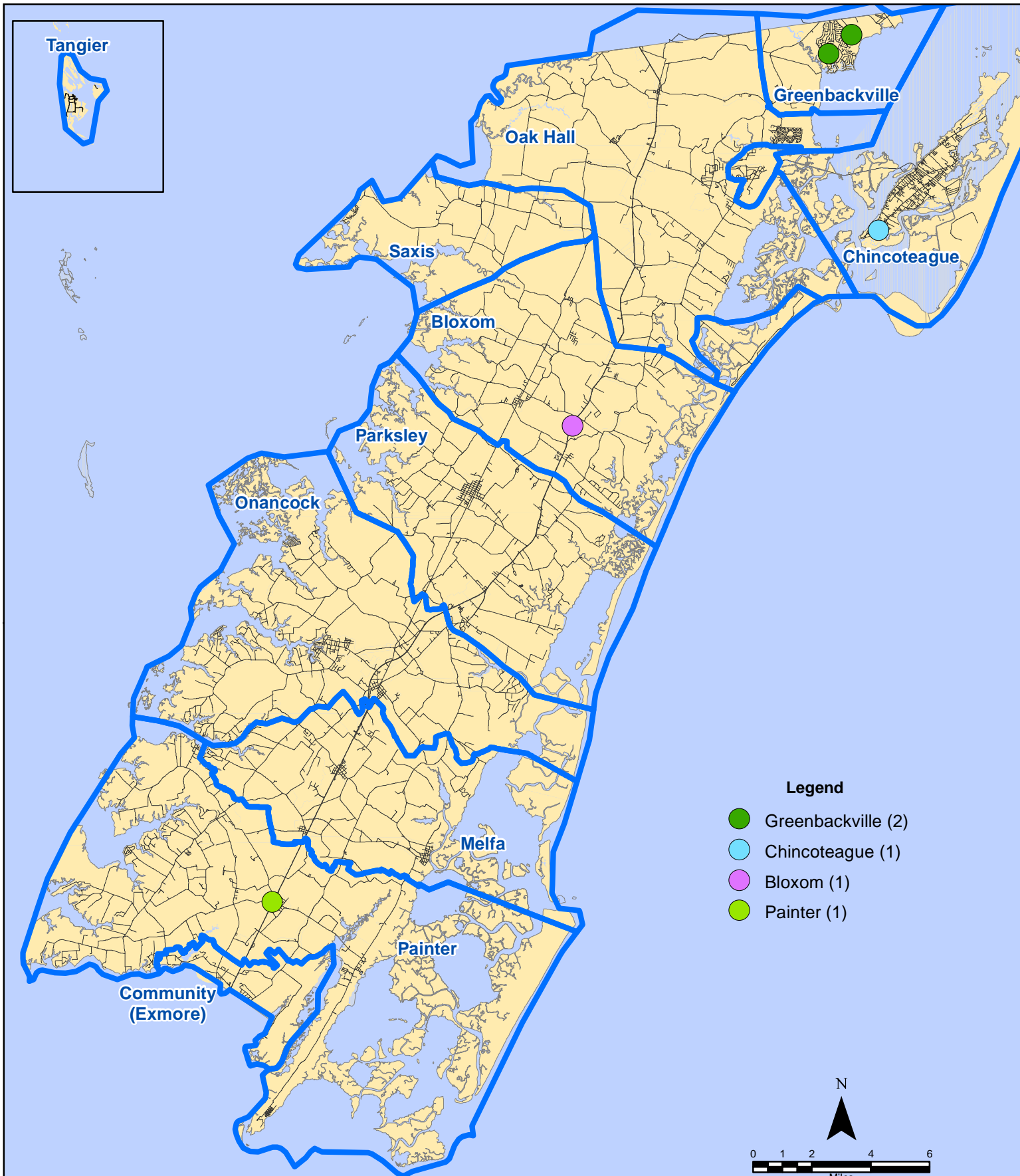


All points are plotted using X and Y coordinates provided by the ESVA 911 Center. Points may be plotted over one another when they are in close proximity.



Map Prepared by the Accomack County Department of Building, Planning & Economic Development using data from the ESVA 911 Center.- May 10, 2018

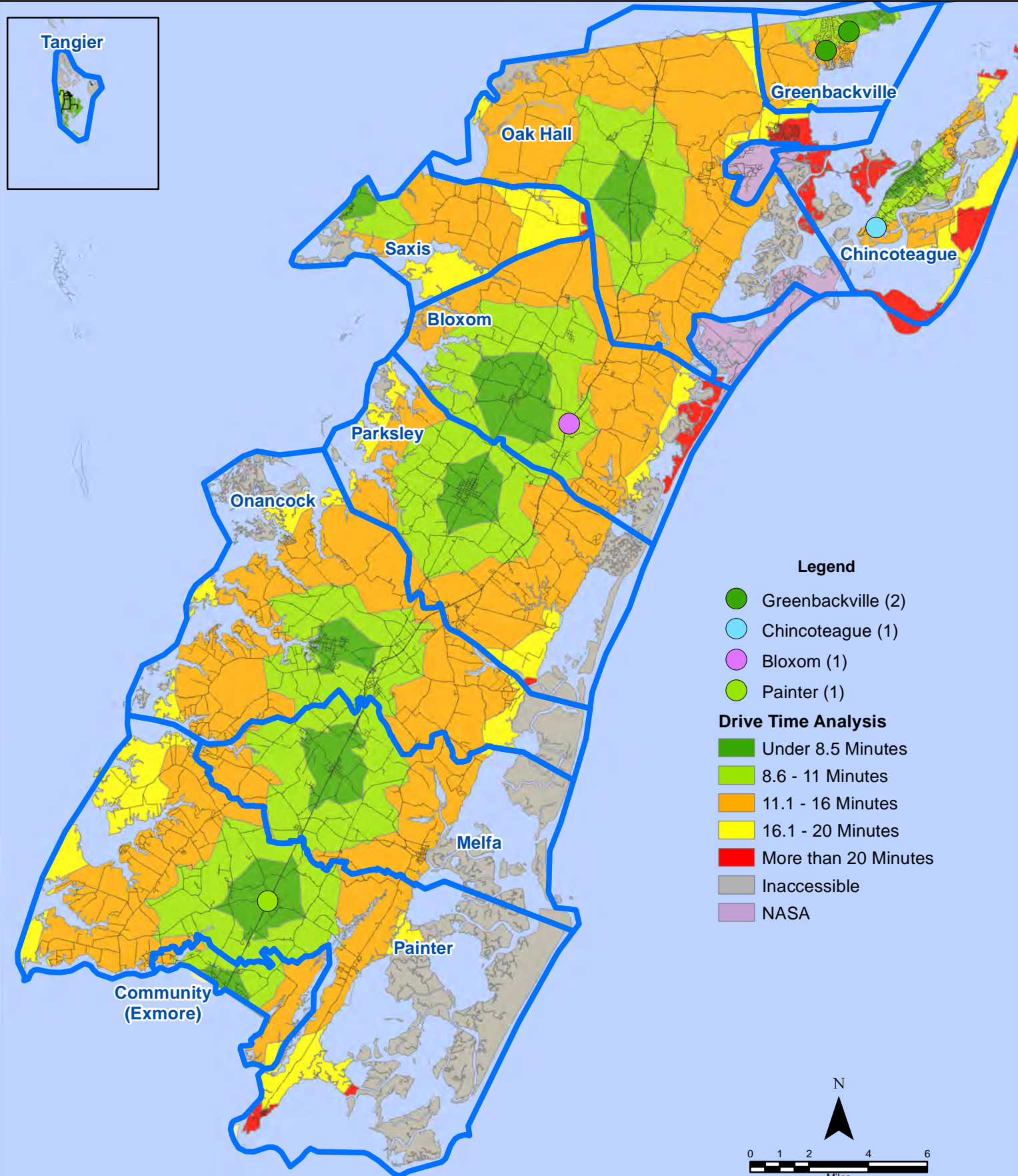
# April 2018 EMS Calls With Response Time Greater Than 20 Mins.



All points are plotted using X and Y coordinates provided by the ESVA 911 Center. Points may be plotted over one another when they are in close proximity.

Map Prepared by the Accomack County Department of Building, Planning & Economic Development using data from the ESVA 911 Center.- May 10., 2018

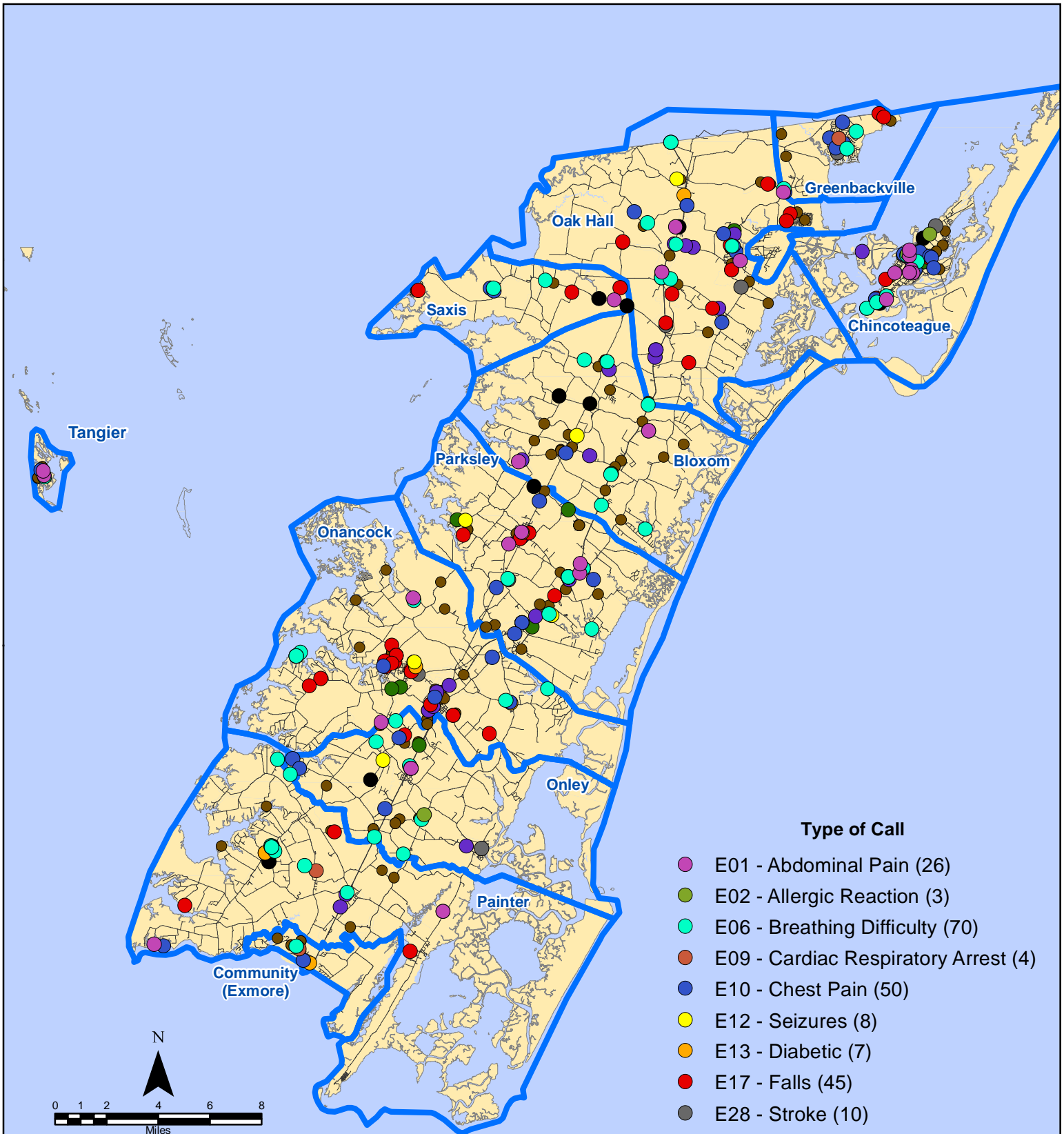
# April 2018 EMS Calls With Response Time Greater Than 20 Mins.



All points are plotted using X and Y coordinates provided by the ESVA 911 Center. Points may be plotted over one another when they are in close proximity.

Map Prepared by the Accomack County Department of Building, Planning & Economic Development using data from the ESVA 911 Center.- May 10., 2018

# April 2018 EMS Calls By Type



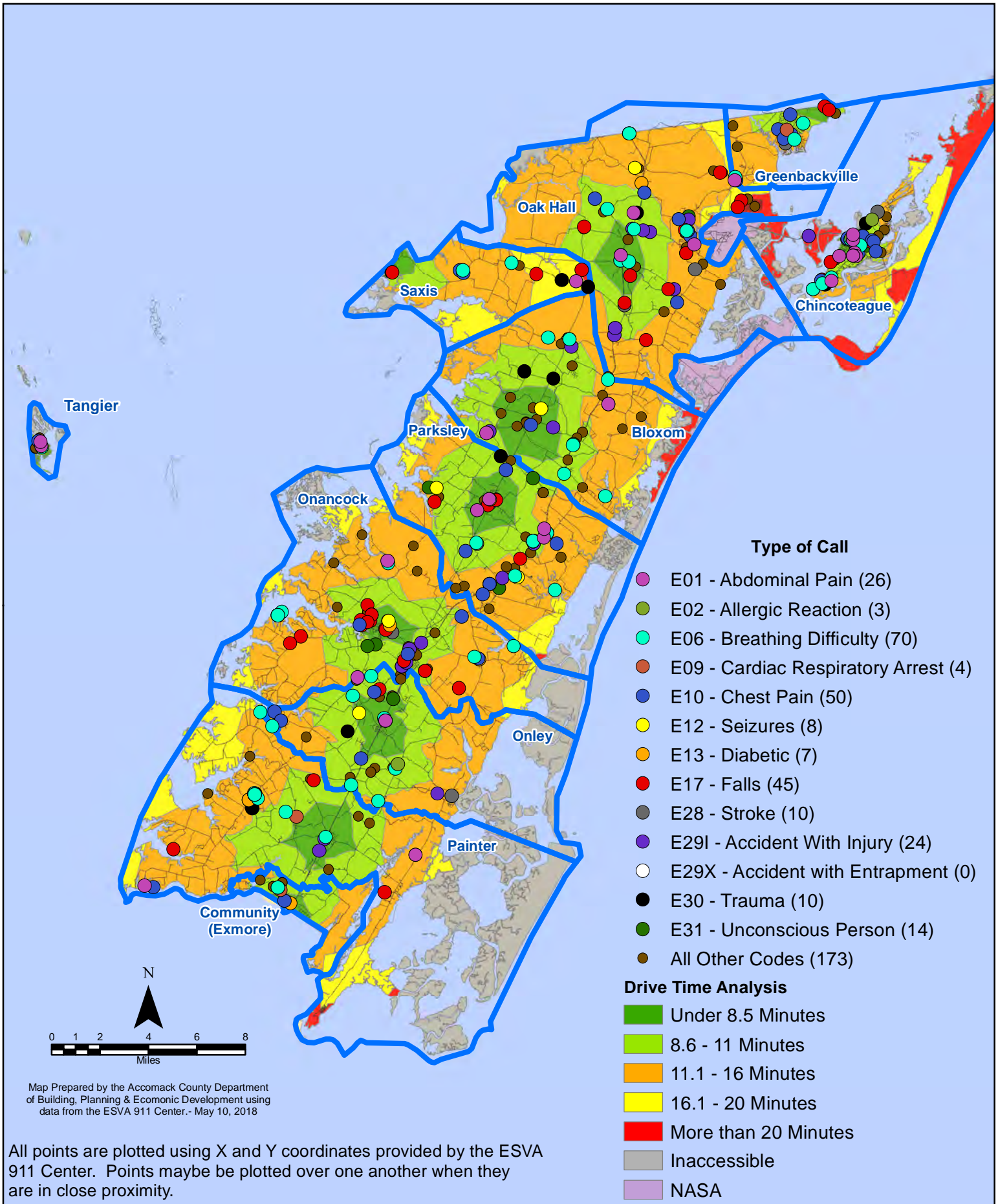
## Type of Call

- E01 - Abdominal Pain (26)
- E02 - Allergic Reaction (3)
- E06 - Breathing Difficulty (70)
- E09 - Cardiac Respiratory Arrest (4)
- E10 - Chest Pain (50)
- E12 - Seizures (8)
- E13 - Diabetic (7)
- E17 - Falls (45)
- E28 - Stroke (10)
- E29I - Accident With Injury (24)
- E29X - Accident with Entrapment (0)
- E30 - Trauma (10)
- E31 - Unconscious Person (14)
- All Other Codes (173)

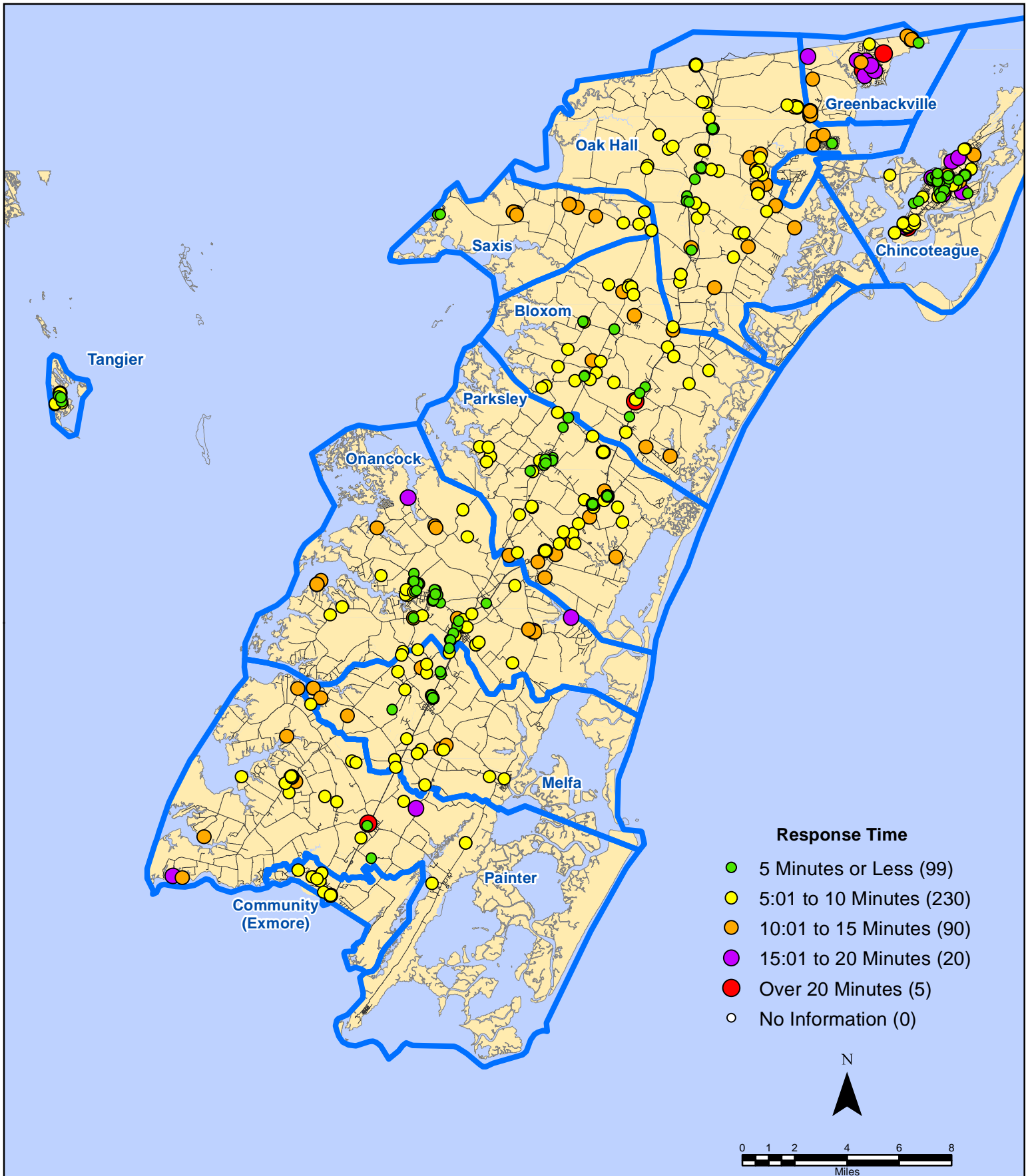
Map Prepared by the Accomack County Department of Building, Planning & Economic Development using data from the ESVA 911 Center. - May 10, 2018

All points are plotted using X and Y coordinates provided by the ESVA 911 Center. Points may be plotted over one another when they are in close proximity.

# April 2018 EMS Calls By Type



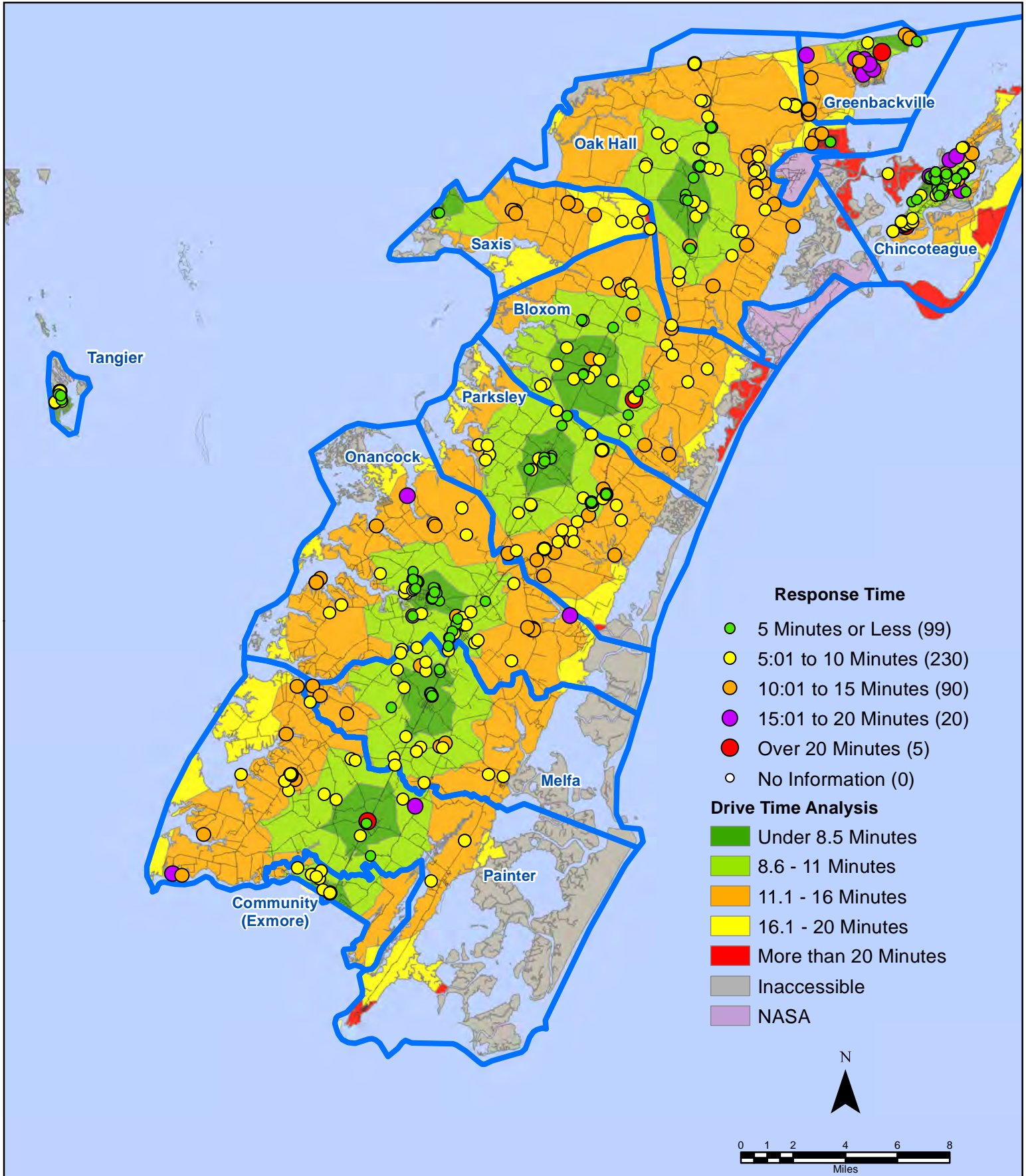
# April 2018 EMS Calls By Response Time



All points are plotted using X and Y coordinates provided by the ESVA 911 Center.  
Points may be plotted over one another when they are in close proximity.

Map Prepared by the Accomack County Department of Building, Planning & Economic Development using data from the ESVA 911 Center.- May 10, 2018

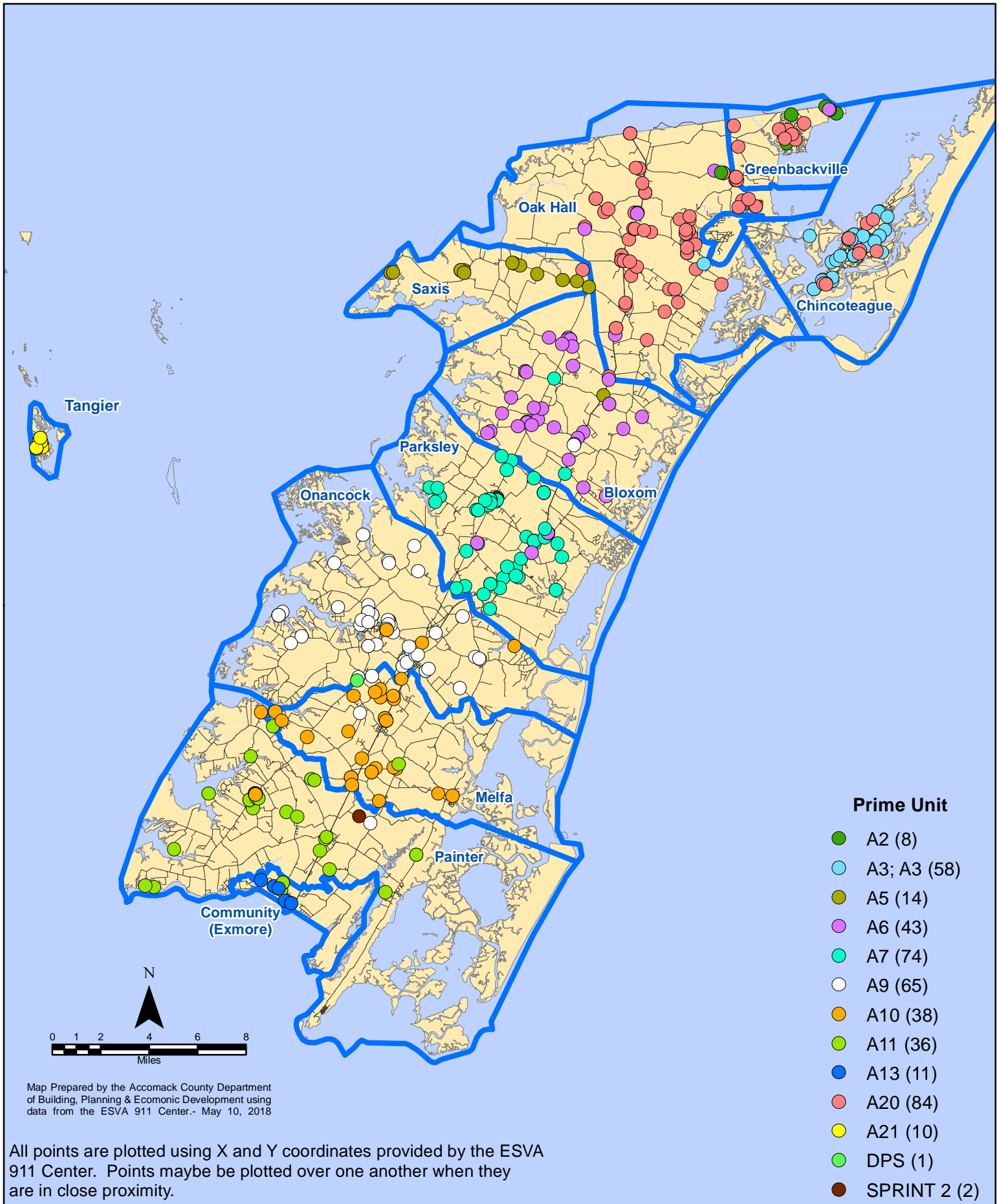
# April 2018 EMS Calls By Response Time



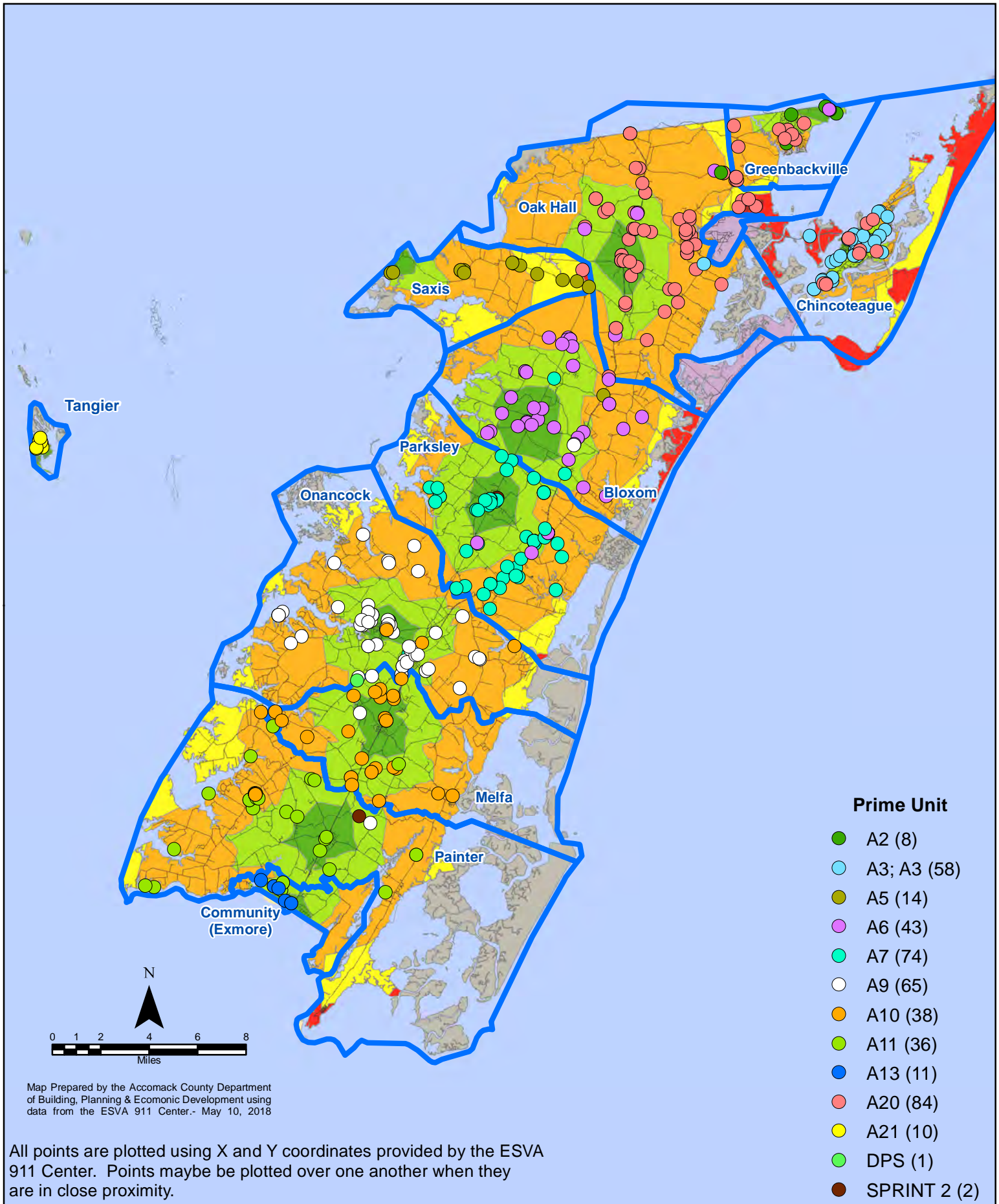
All points are plotted using X and Y coordinates provided by the ESVA 911 Center. Points may be plotted over one another when they are in close proximity.

Map Prepared by the Accomack County Department of Building, Planning & Economic Development using data from the ESVA 911 Center.- May 10, 2018

# April 2018 EMS Calls By Prime Unit



# April 2018 EMS Calls By Prime Unit



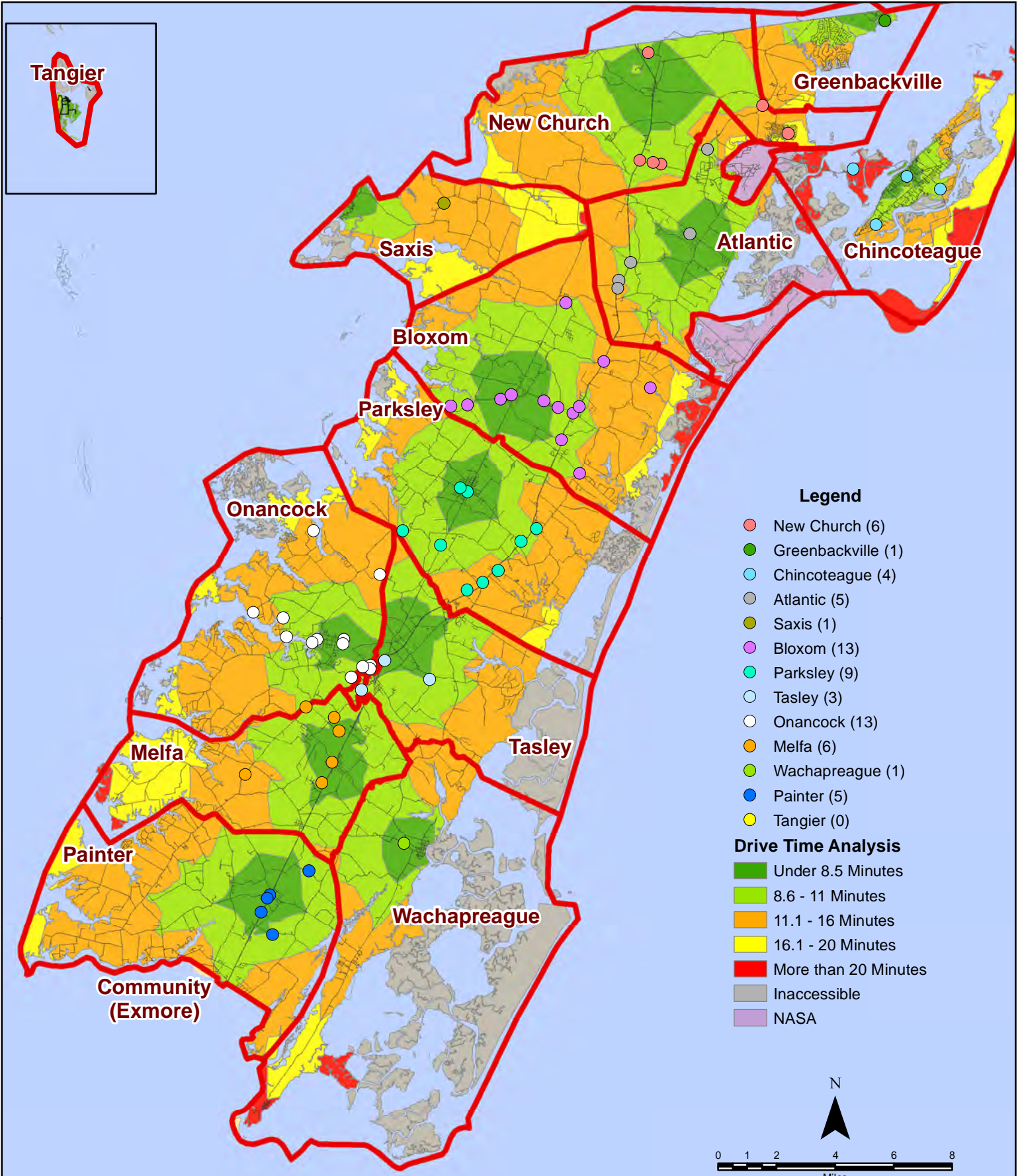
# April 2018 Fire Calls By District



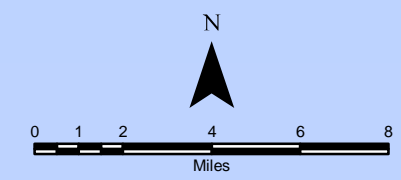
All points are plotted using X and Y coordinates provided by the ESVA 911 Center. Points may be plotted over one another when they are in close proximity.

Map Prepared by the Accomack County Department of Building, Planning & Economic Development using data from the ESVA 911 Center.- May 10, 2018

# April 2018 Fire Calls By District

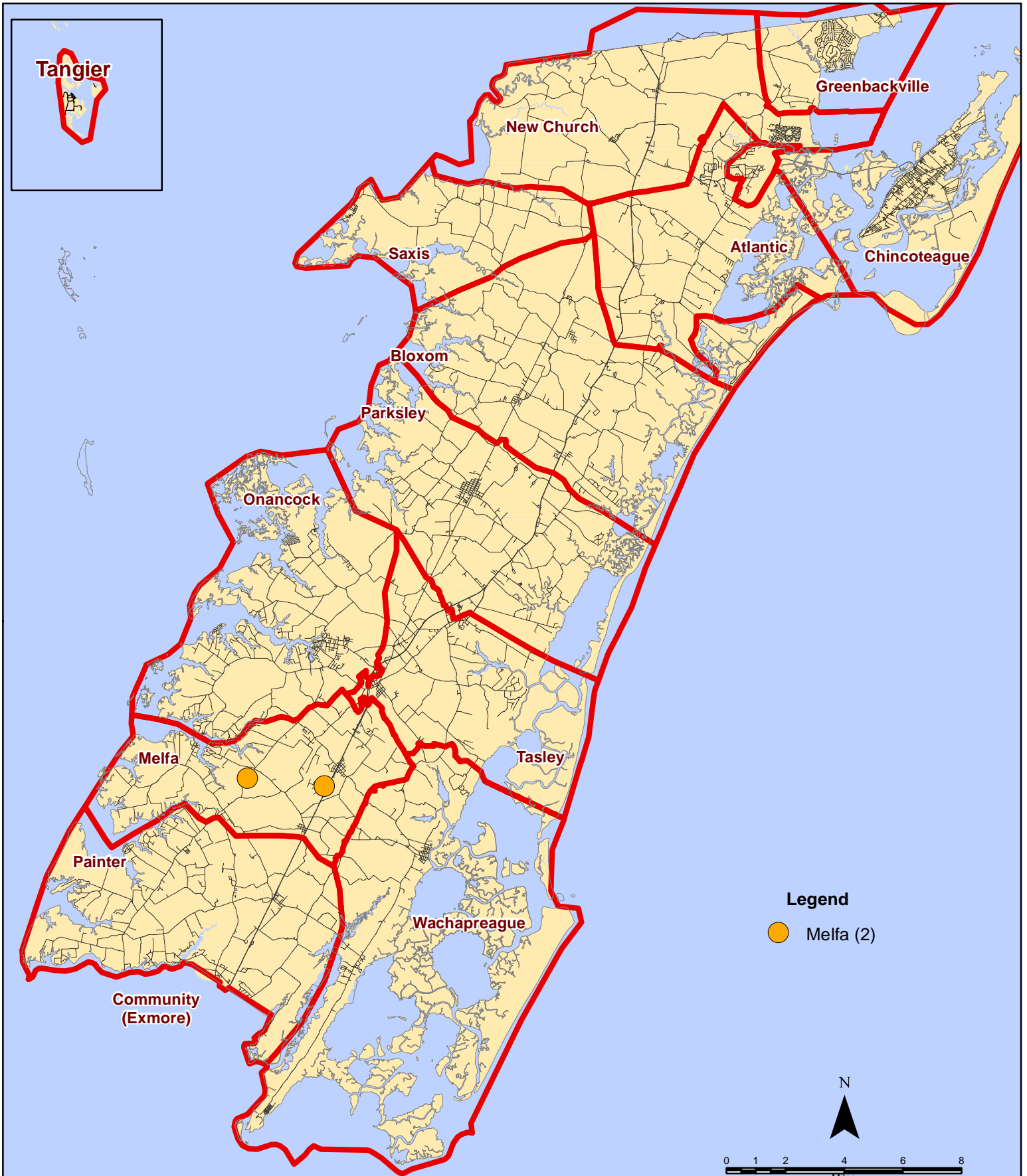


All points are plotted using X and Y coordinates provided by the ESVA 911 Center. Points may be plotted over one another when they are in close proximity.



Map Prepared by the Accomack County Department of Building, Planning & Economic Development using data from the ESVA 911 Center.- May 10, 2018

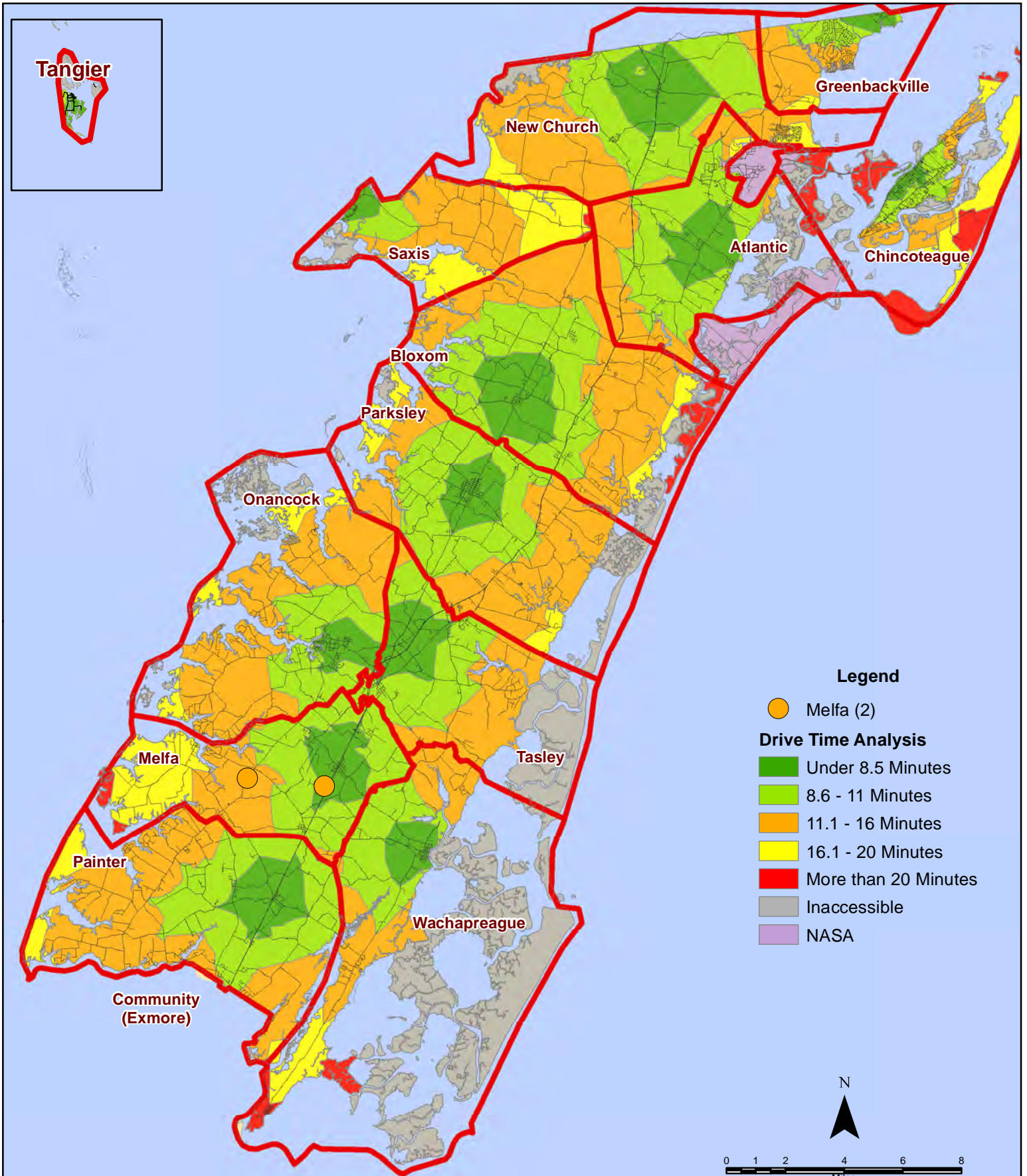
# April 2018 Fire Calls With Response Time Greater Than 20 Mins.



All points are plotted using X and Y coordinates provided by the ESVA 911 Center.  
Points maybe be plotted over one another when they are in close proximity.

Map Prepared by the Accomack County Department of Building, Planning & Economic Development using data from the ESVA 911 Center-May 10, 2018

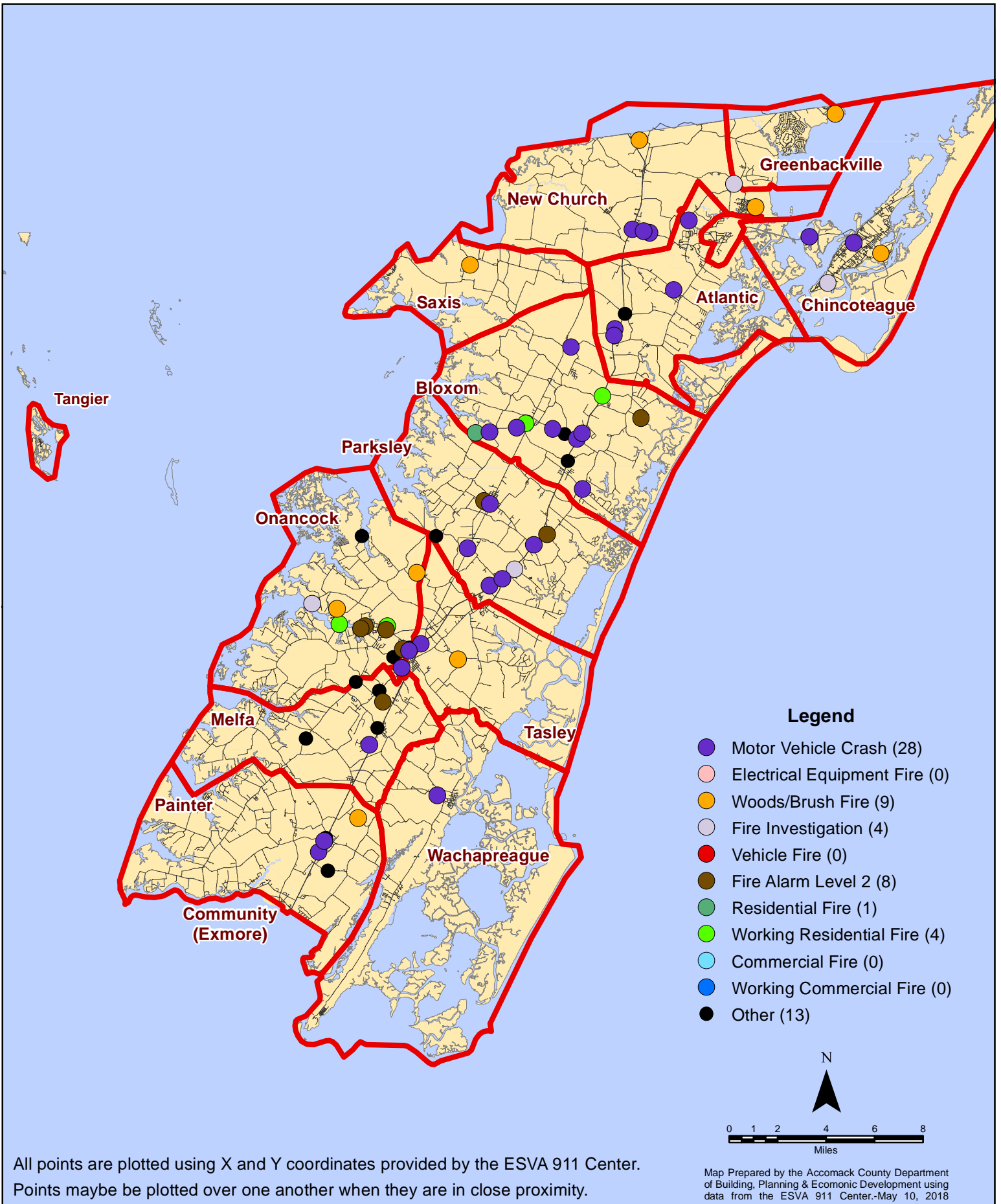
# April 2018 Fire Calls With Response Time Greater Than 20 Mins.



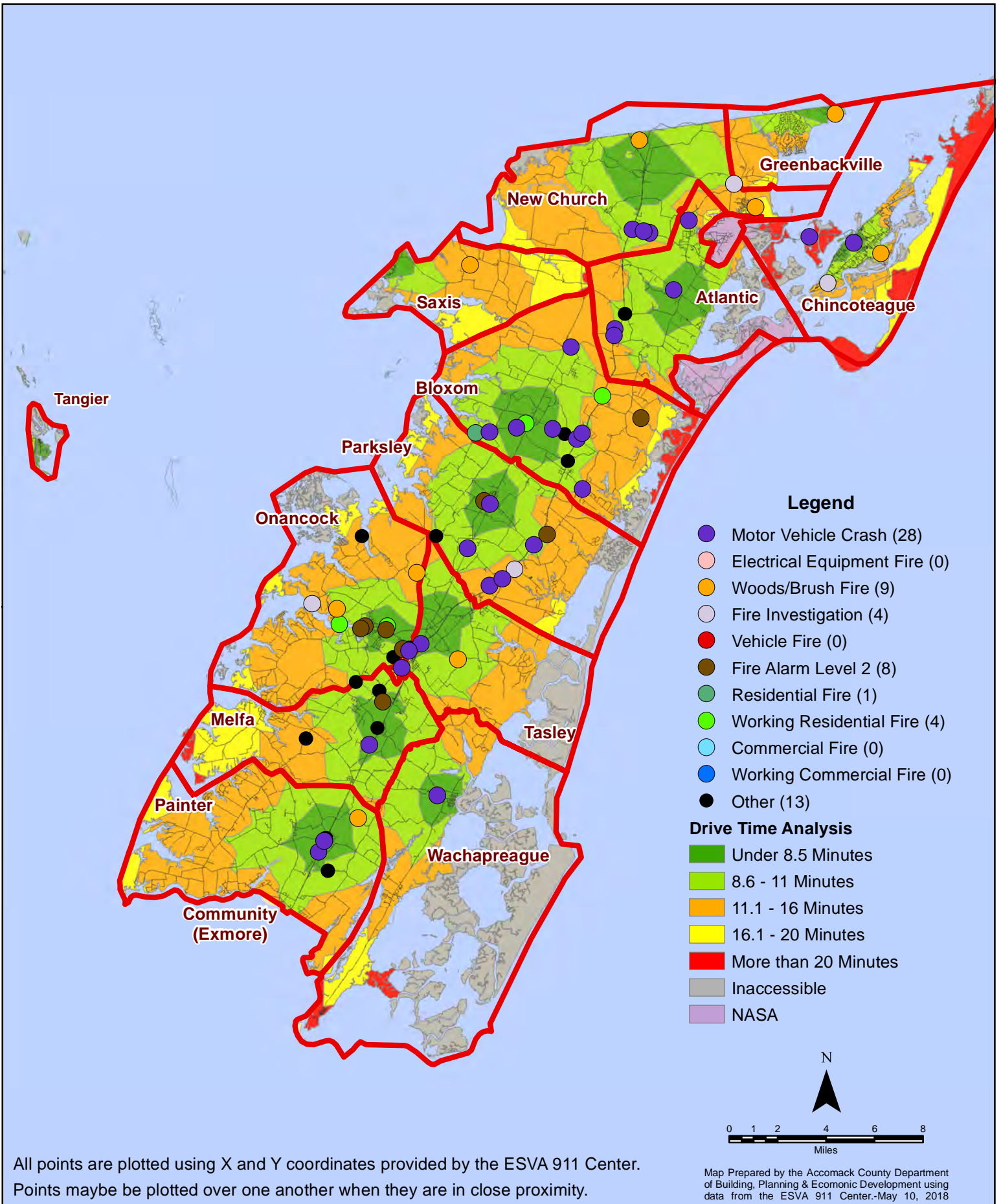
All points are plotted using X and Y coordinates provided by the ESVA 911 Center. Points maybe be plotted over one another when they are in close proximity.

Map Prepared by the Accomack County Department of Building, Planning & Economic Development using data from the ESVA 911 Center-May 10, 2018

# April 2018 Fire Calls By Type



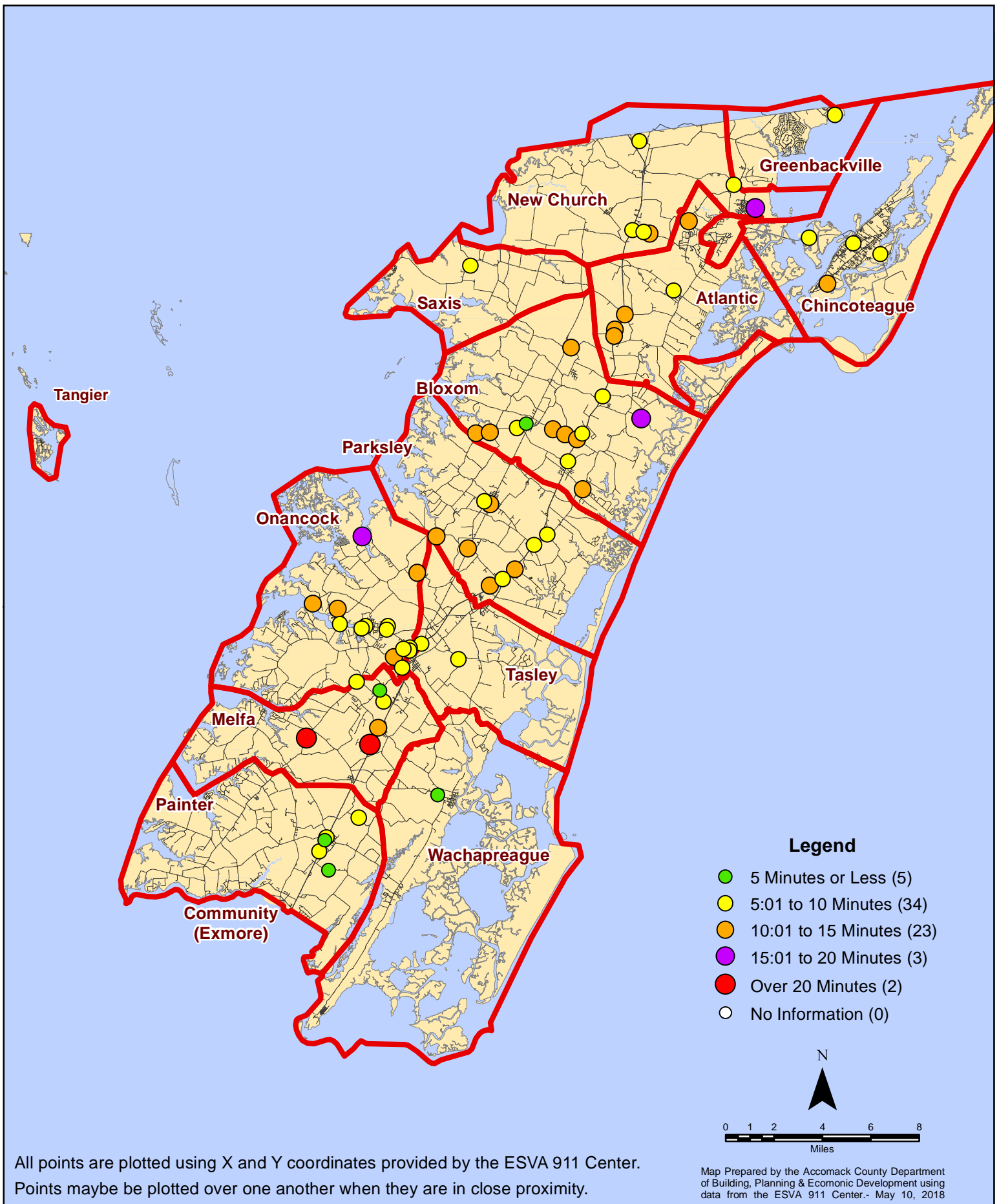
# April 2018 Fire Calls By Type



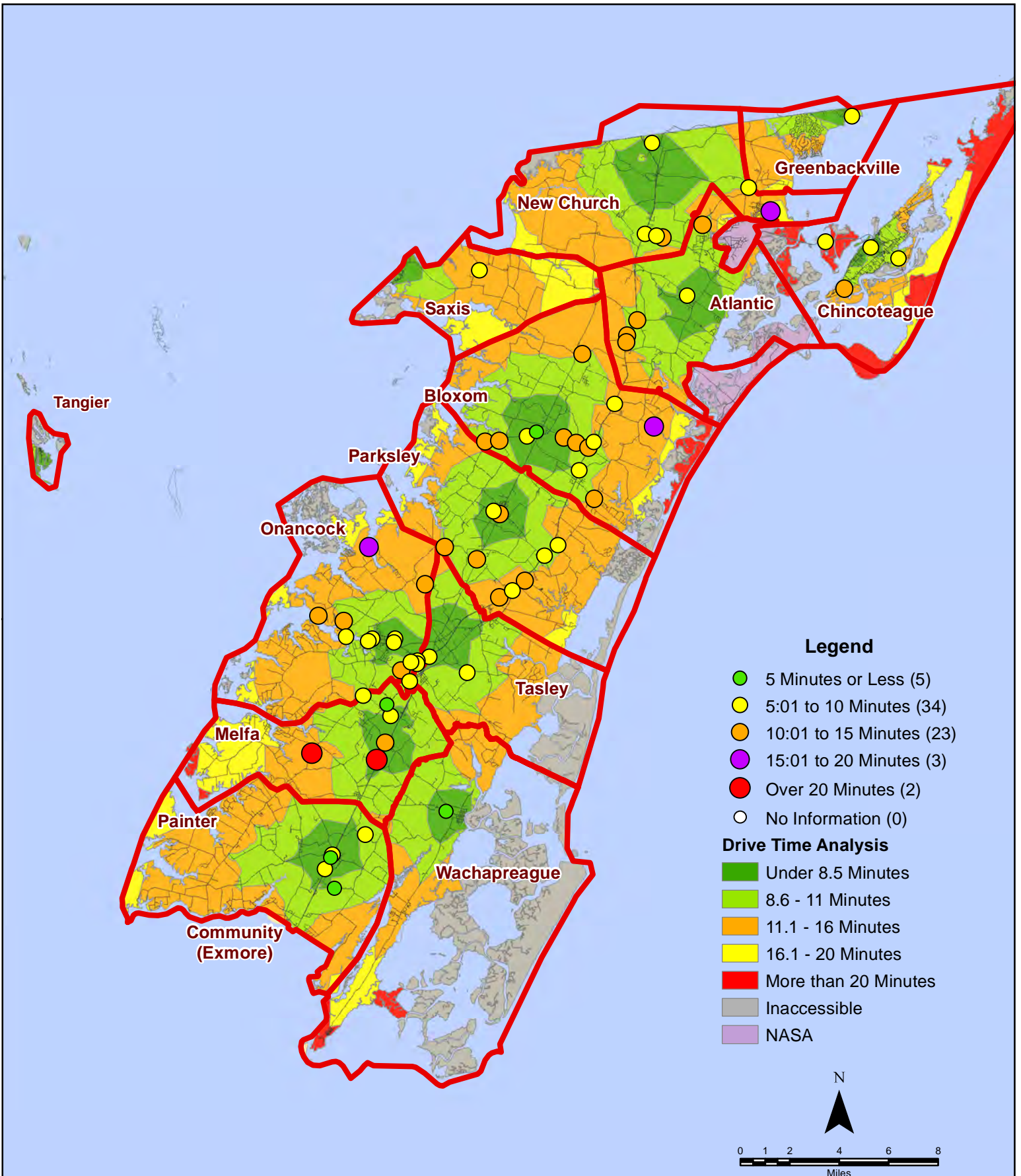
All points are plotted using X and Y coordinates provided by the ESVA 911 Center. Points may be plotted over one another when they are in close proximity.

Map Prepared by the Accomack County Department of Building, Planning & Economic Development using data from the ESVA 911 Center.-May 10, 2018

# April 2018 Fire Calls By Response Time



# April 2018 Fire Calls By Response Time

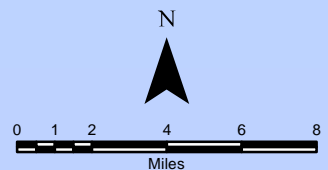


## Legend

- 5 Minutes or Less (5)
- 5:01 to 10 Minutes (34)
- 10:01 to 15 Minutes (23)
- 15:01 to 20 Minutes (3)
- Over 20 Minutes (2)
- No Information (0)

## Drive Time Analysis

- Under 8.5 Minutes
- 8.6 - 11 Minutes
- 11.1 - 16 Minutes
- 16.1 - 20 Minutes
- More than 20 Minutes
- Inaccessible
- NASA



All points are plotted using X and Y coordinates provided by the ESVA 911 Center. Points may be plotted over one another when they are in close proximity.

Map Prepared by the Accomack County Department of Building, Planning & Economic Development using data from the ESVA 911 Center.- May 10, 2018