

January 2018

Fire - Performance Measure Data *					
Response District	Total Calls in District	Greater than 20 min. Response Time	Calls Handled by other agency	Longest Response Time	Overall Station Benchmark %
New Church	17	2	0	0:27:43	88.2%
Greenbackville	2	0	1	0:13:35	100.0%
Chincoteague	11	2	1	0:27:11	81.8%
Atlantic	14	2	0	0:34:12	85.7%
Saxis	3	1	1	0:35:20	66.7%
Bloxom	17	4	2	1:28:28	76.5%
Parksley	36	4	4	1:20:41	88.9%
Tasley	22	2	0	0:32:32	90.9%
Onancock	18	3	1	1:00:10	83.3%
Melfa	19	1	3	1:22:57	94.7%
Wachapreague	4	1	2	0:21:40	75.0%
Painter	21	3	0	0:25:59	85.7%
Tangier	1	0	0	0:05:17	100.0%
System Totals	185	25	15	1:28:28	86.5%

EMS - Performance Measure Data						
Response District	Total Calls in District	Greater than 20 min. Response Time	Longest Response Time	Calls Handled by other agency	Station Benchmark Compliance %	Overall Station Reliability %
Greenbackville	11	2	0:40:50	7	81.8%	36.4%
Chincoteague	66	0	0:19:46	6	100.0%	90.9%
Saxis	10	1	0:21:52	3	90.0%	70.0%
Bloxom	58	2	1:06:37	1	96.6%	98.3%
Parksley	101	2	0:30:47	8	98.0%	92.1%
Onancock	87	5	0:31:36	2	94.3%	97.7%
Melfa	55	3	0:36:40	3	94.5%	94.5%
Wachapreague (Painter)	46	10	1:06:43	3	78.3%	93.5%
Oak Hall	86	7	0:34:47	7	91.9%	91.9%
Tangier	17	0	0:17:17	0	100.0%	100.0%
Community (Exmore)	17	0	0:14:39	5	100.0%	70.6%
System Totals	554	32	1:06:43	45	94.2%	91.9%

EMS Mutual Aid Data		Station Giving Aid														
Station Receiving Aid		Greenbackville	Chincoteague	Saxis	Bloxom	Parksley	Onancock	Melfa	Wachapreague/Painter	Oak Hall	Community (Exmore)	Northampton	Wallops	NORS	2nd Call	3rd Call
		Greenbackville		1		1						5				7
Chincoteague									6						5	1
Saxis				1					2					2	1	
Bloxom					1									1		
Parksley				5		3								2	5	1
Onancock					1		1								2	
Melfa						2		1						2	1	
Wachapreague (Painter)							2			1				1	2	
Oak Hall	1	1		5										1	6	
Community (Exmore)								1	4					4	1	
Northampton Co.																
Wallops																
Totals	1	2	0	12	2	5	4	5	13	1	0	0	20	23	2	

Transport Destination			
Hospital Destination by Unit	Riverside - Shore Memorial	PRMC	Other
Chincoteague	15	24	
Saxis	4	1	
Bloxom	36	3	
Parksley	70	1	
Onancock	56		
Melfa	39		
Wachapreague (Painter)	31		
Oak Hall	37	24	1
Wallops			
Totals	291	55	1

Benchmark = The Accomack County Board of Supervisors established a 20 minute standard for emergency response.

NORS = No Response by station or the call was handled by another station or agency.

2nd Call = 2nd ambulance call received while first ambulance was on another call.

3rd Call = 3rd ambulance call received while first & second ambulances were on other calls.

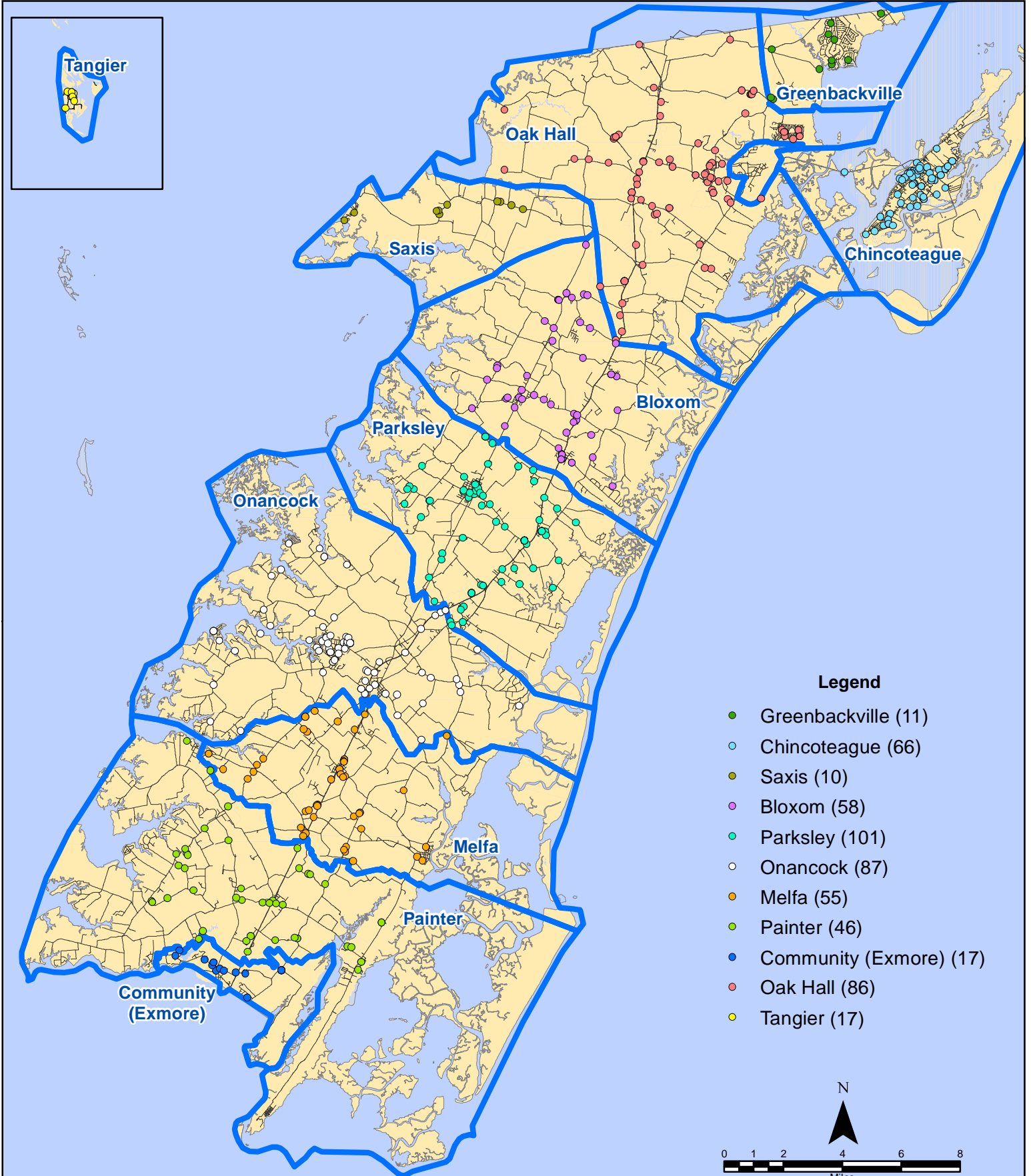
* This data excludes F1 Med (Medical Assist) calls in the Fire Data.

This information was prepared using data supplied by the Eastern Shore of Virginia 911 Center. This information is original incident data only and may not be representative of all units and/or stations who responded to an incident.

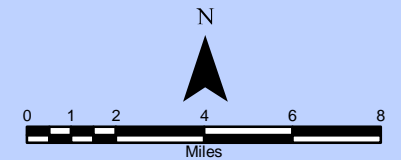
Please note: Extended response times are due to Winter Storm Grayson.



January 2018 EMS Calls By District

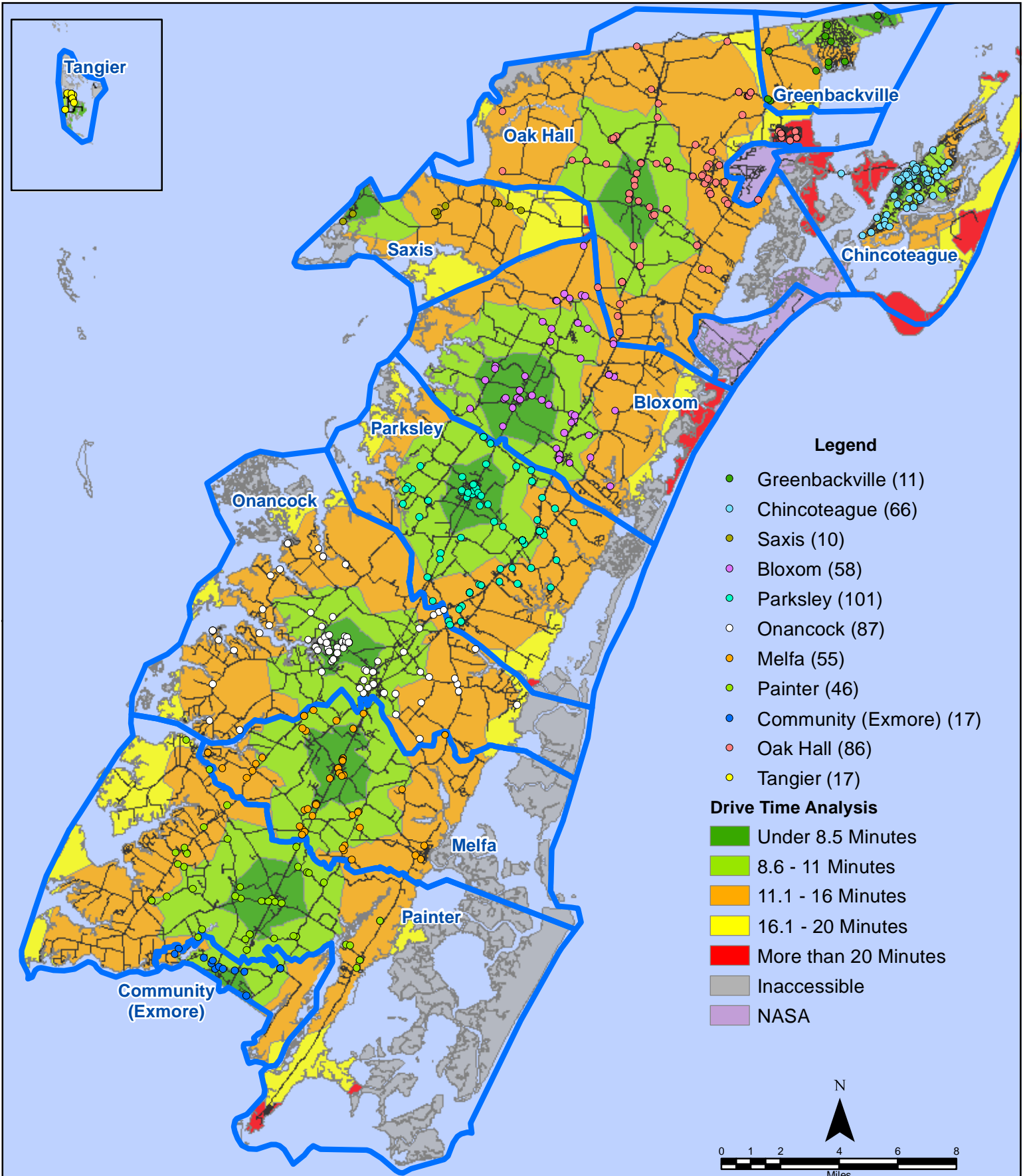


All points are plotted using X and Y coordinates provided by the ESVA 911 Center.
 Points may be plotted over one another when they are in close proximity.



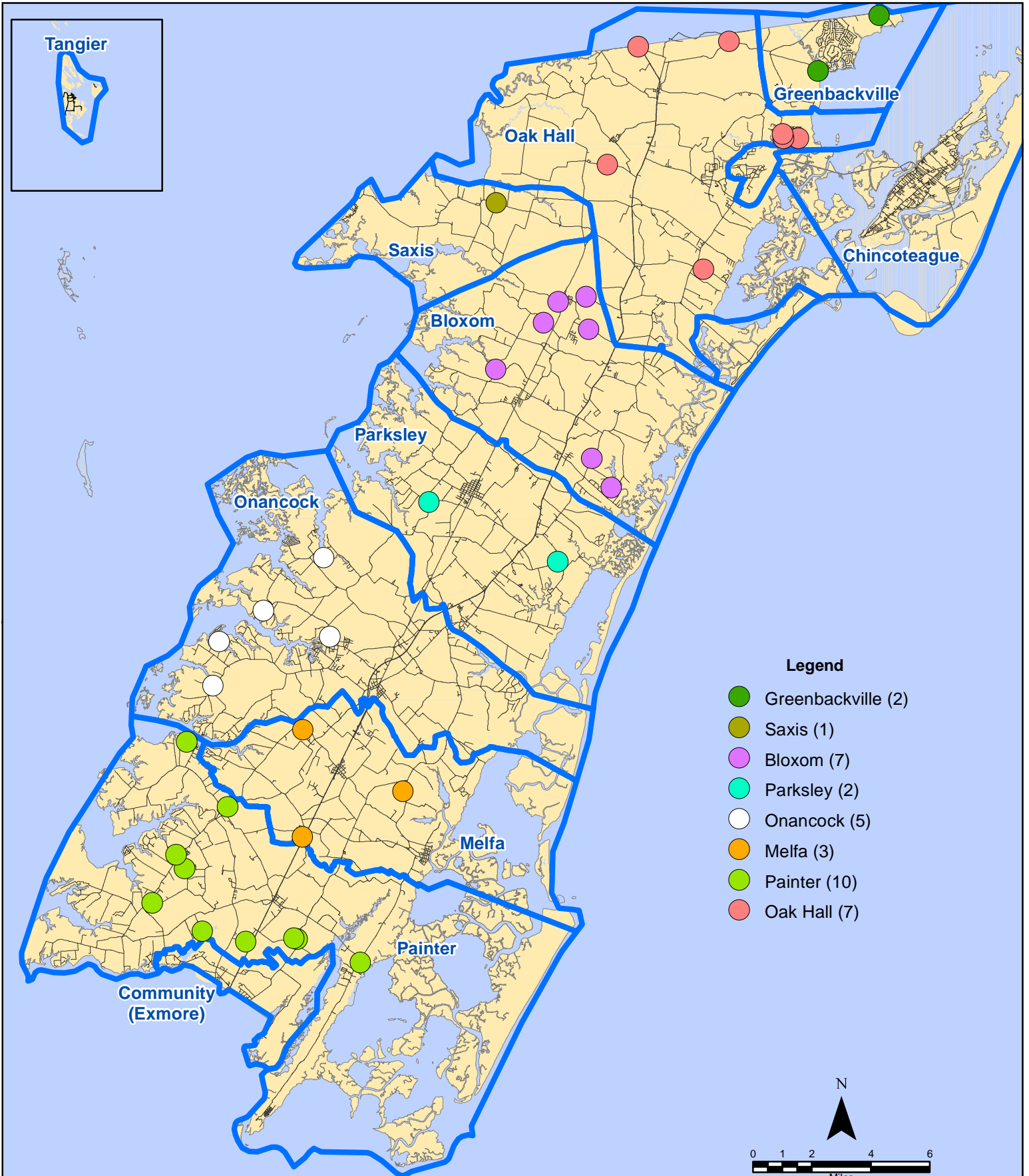
Map Prepared by the Accomack County Department of Building, Planning & Economic Development using data from the ESVA 911 Center.- February 6, 2018

January 2018 EMS Calls By District



All points are plotted using X and Y coordinates provided by the ESVA 911 Center. Points may be plotted over one another when they are in close proximity.

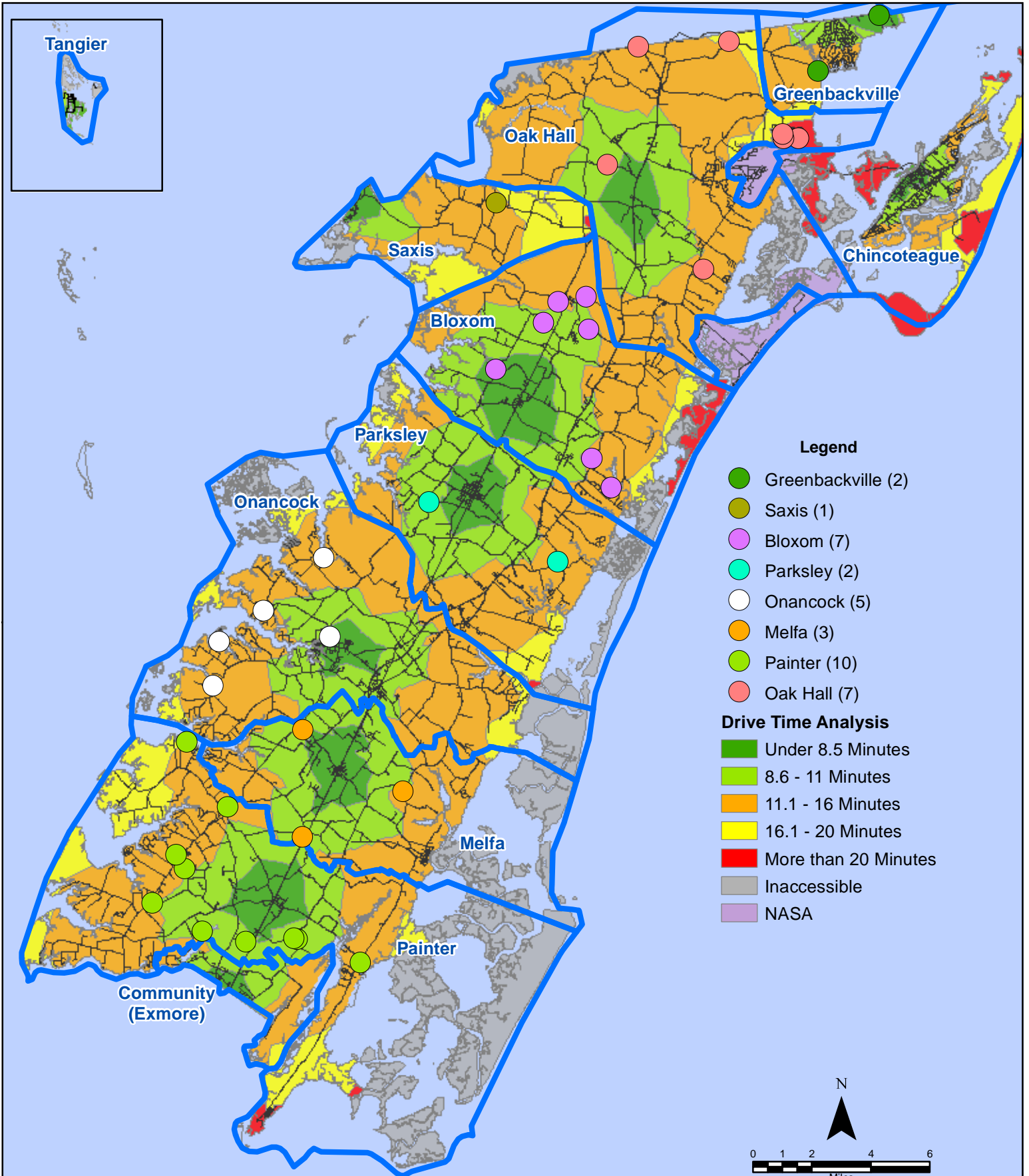
January 2018 EMS Calls With Response Time Greater Than 20 Mins.



All points are plotted using X and Y coordinates provided by the ESVA 911 Center. Points may be plotted over one another when they are in close proximity.

Map Prepared by the Accomack County Department of Building, Planning & Economic Development using data from the ESVA 911 Center.- February 6, 2018

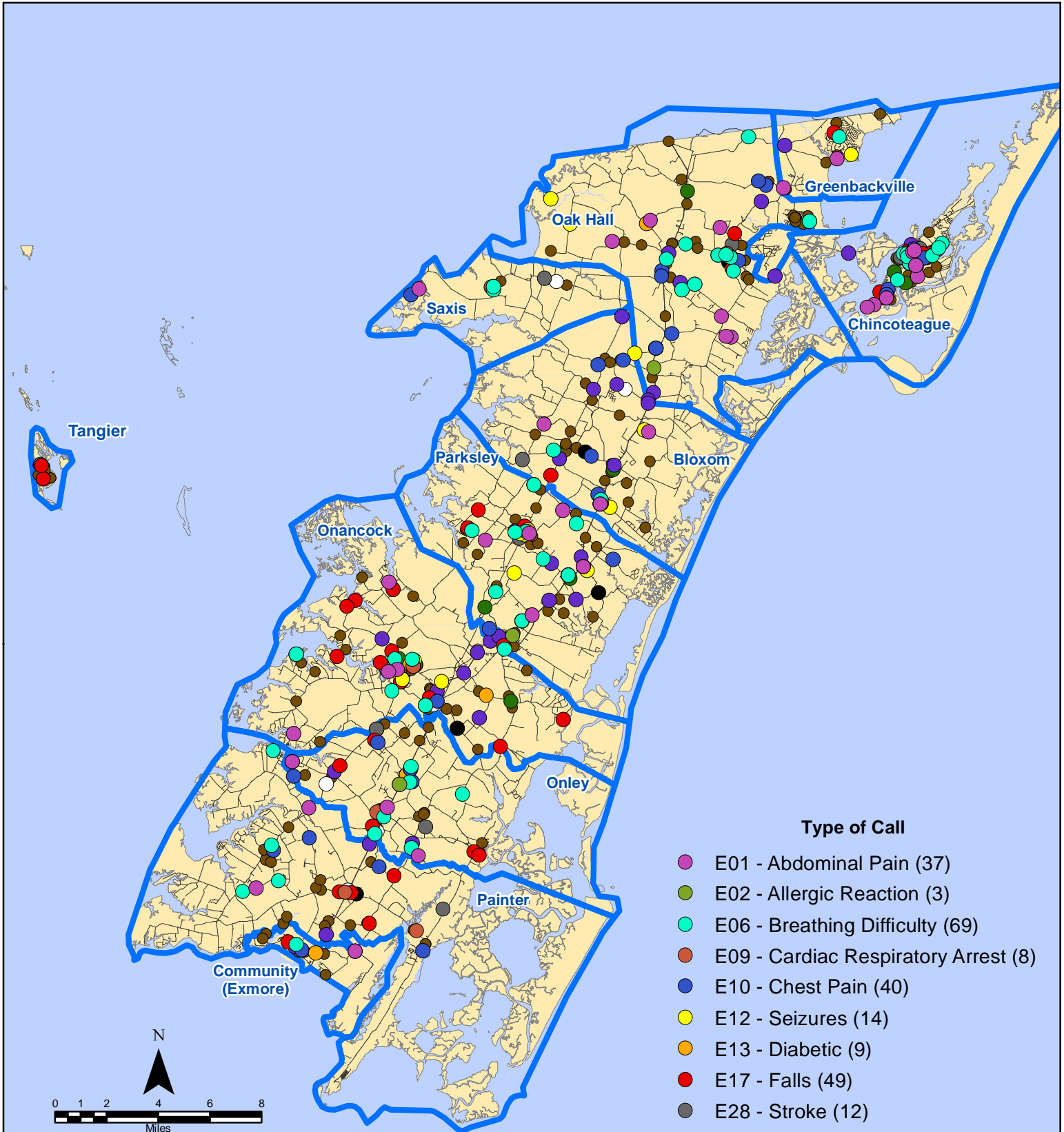
January 2018 EMS Calls With Response Time Greater Than 20 Mins.



All points are plotted using X and Y coordinates provided by the ESVA 911 Center. Points may be plotted over one another when they are in close proximity.

Map Prepared by the Accomack County Department of Building, Planning & Economic Development using data from the ESVA 911 Center.- February 6, 2018

January 2018 EMS Calls By Type



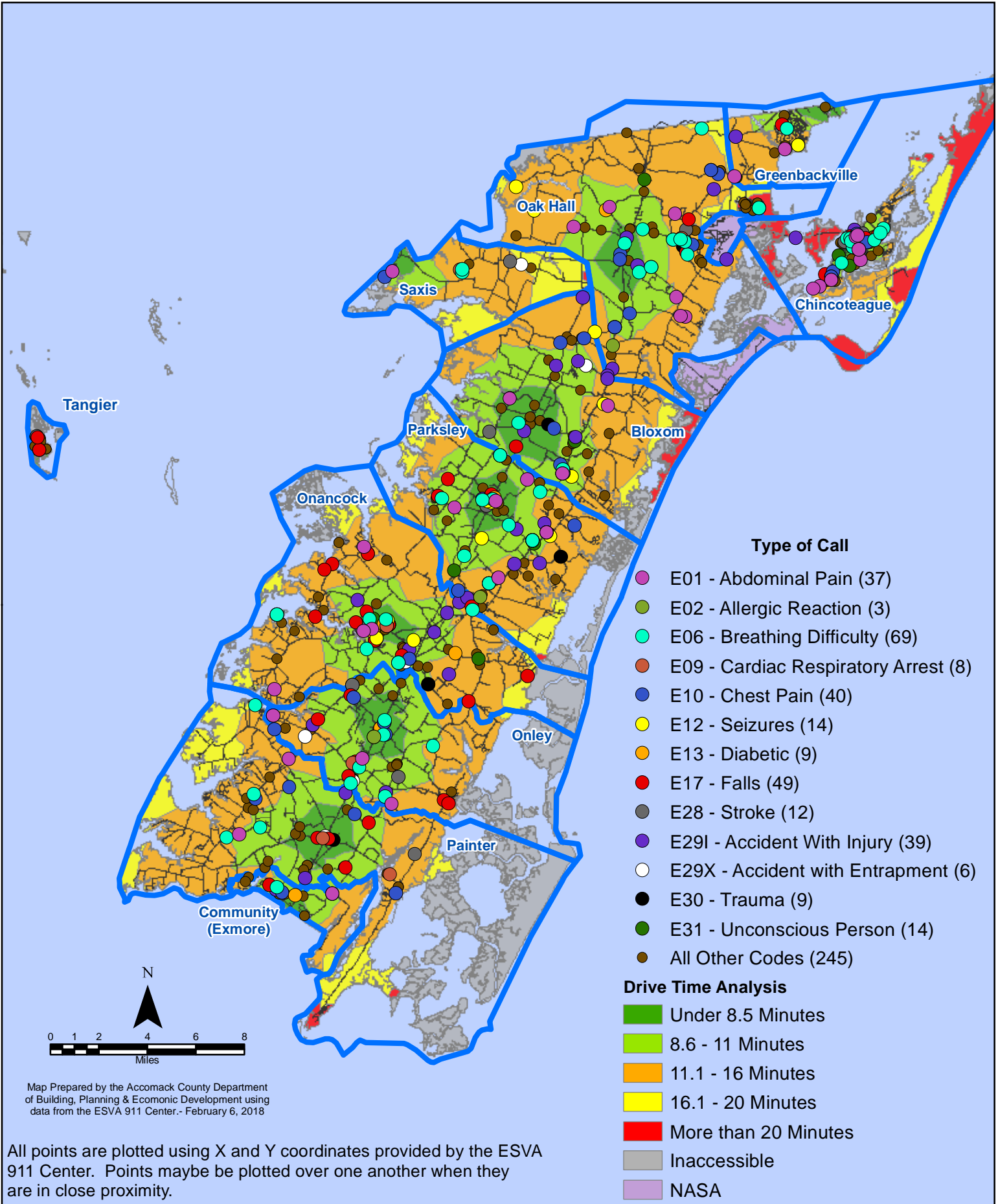
Type of Call

- E01 - Abdominal Pain (37)
- E02 - Allergic Reaction (3)
- E06 - Breathing Difficulty (69)
- E09 - Cardiac Respiratory Arrest (8)
- E10 - Chest Pain (40)
- E12 - Seizures (14)
- E13 - Diabetic (9)
- E17 - Falls (49)
- E28 - Stroke (12)
- E29I - Accident With Injury (39)
- E29X - Accident with Entrapment (6)
- E30 - Trauma (9)
- E31 - Unconscious Person (14)
- All Other Codes (245)

Map Prepared by the Accomack County Department of Building, Planning & Economic Development using data from the ESVA 911 Center. - February 6, 2018

All points are plotted using X and Y coordinates provided by the ESVA 911 Center. Points may be plotted over one another when they are in close proximity.

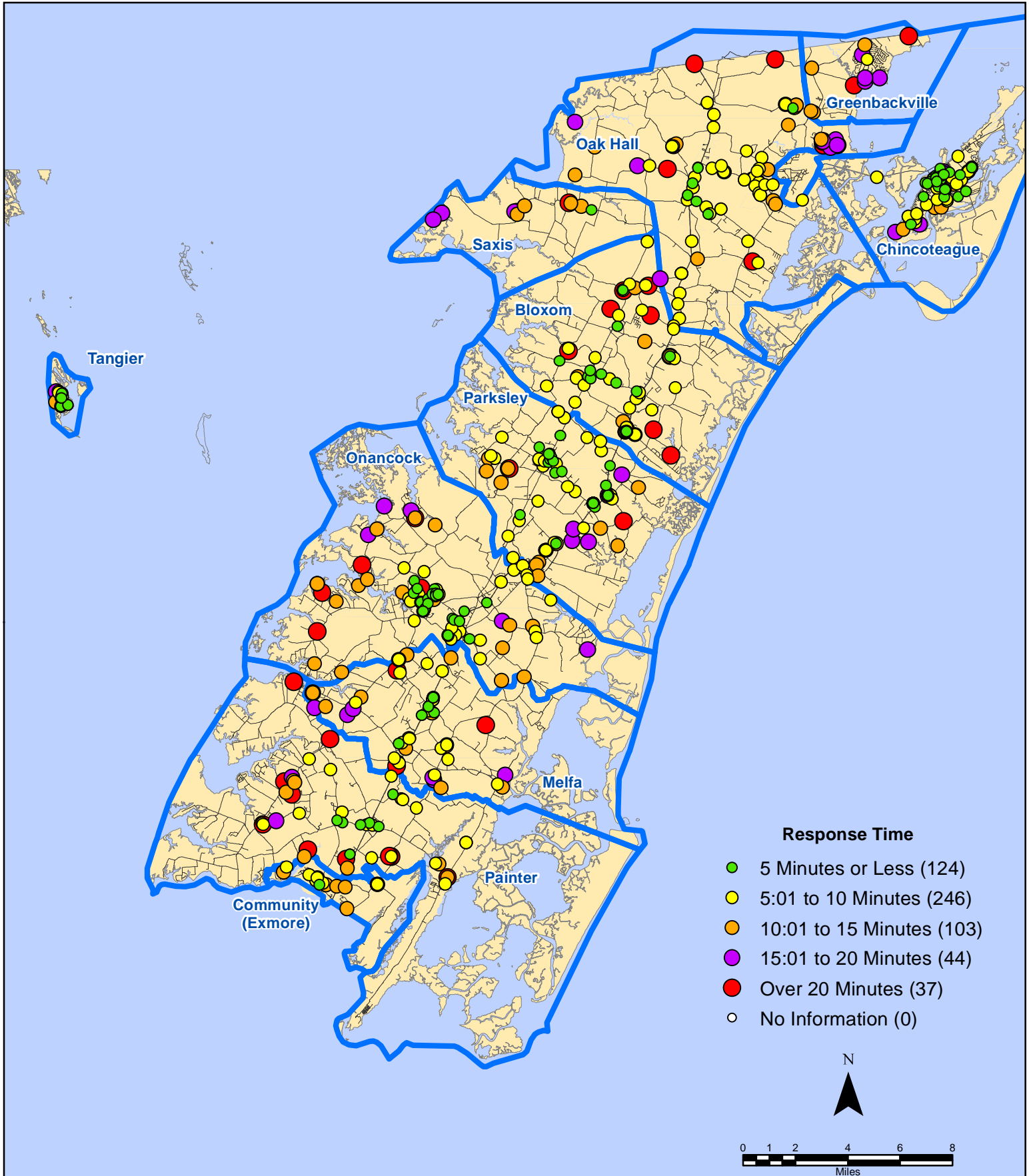
January 2018 EMS Calls By Type



Map Prepared by the Accomack County Department of Building, Planning & Economic Development using data from the ESVA 911 Center. - February 6, 2018

All points are plotted using X and Y coordinates provided by the ESVA 911 Center. Points may be plotted over one another when they are in close proximity.

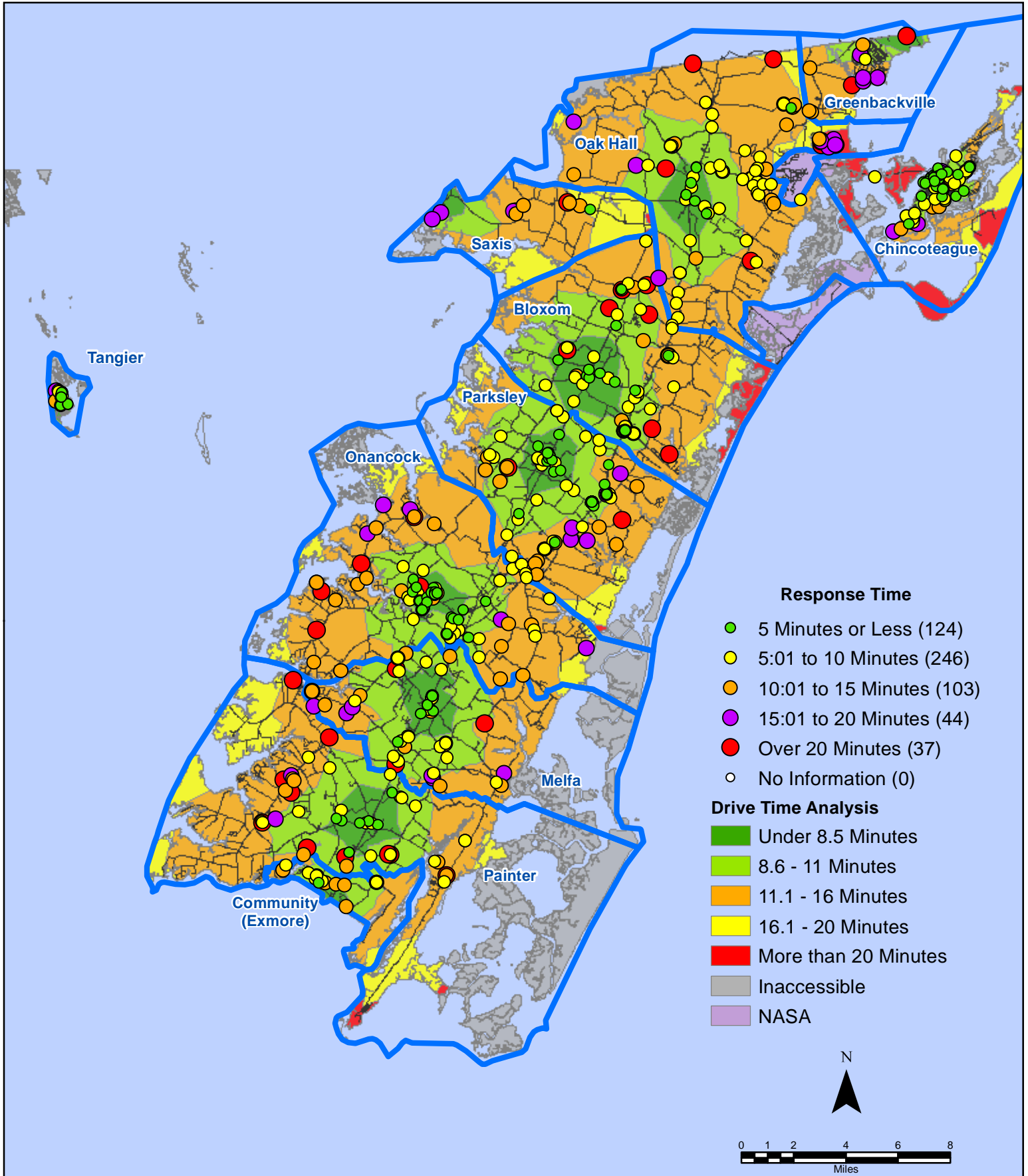
January 2018 EMS Calls By Response Time



All points are plotted using X and Y coordinates provided by the ESVA 911 Center.
Points may be plotted over one another when they are in close proximity.

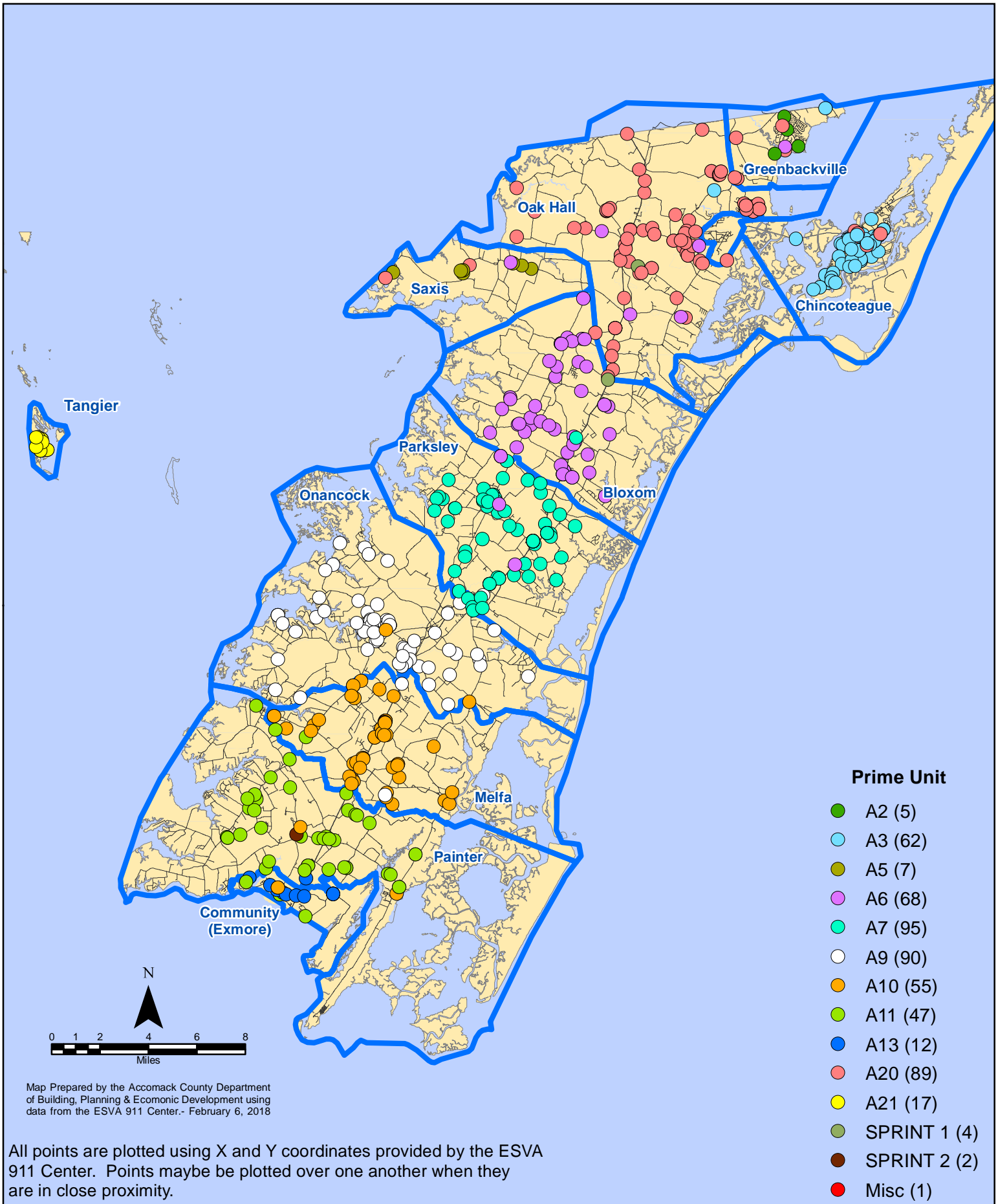
Map Prepared by the Accomack County Department of Building, Planning & Economic Development using data from the ESVA 911 Center.- February 6, 2018

January 2018 EMS Calls By Response Time

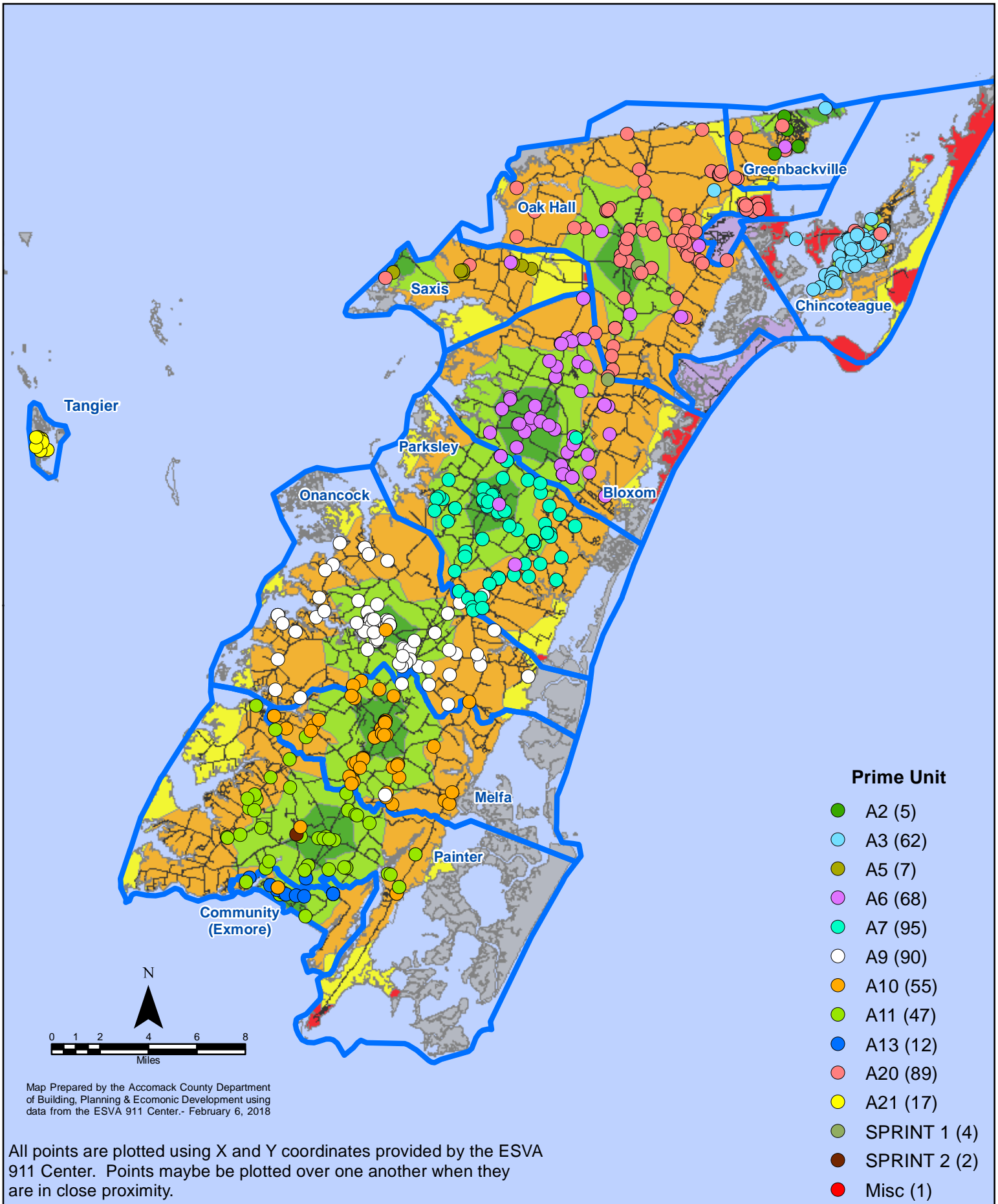


All points are plotted using X and Y coordinates provided by the ESVA 911 Center. Points may be plotted over one another when they are in close proximity.

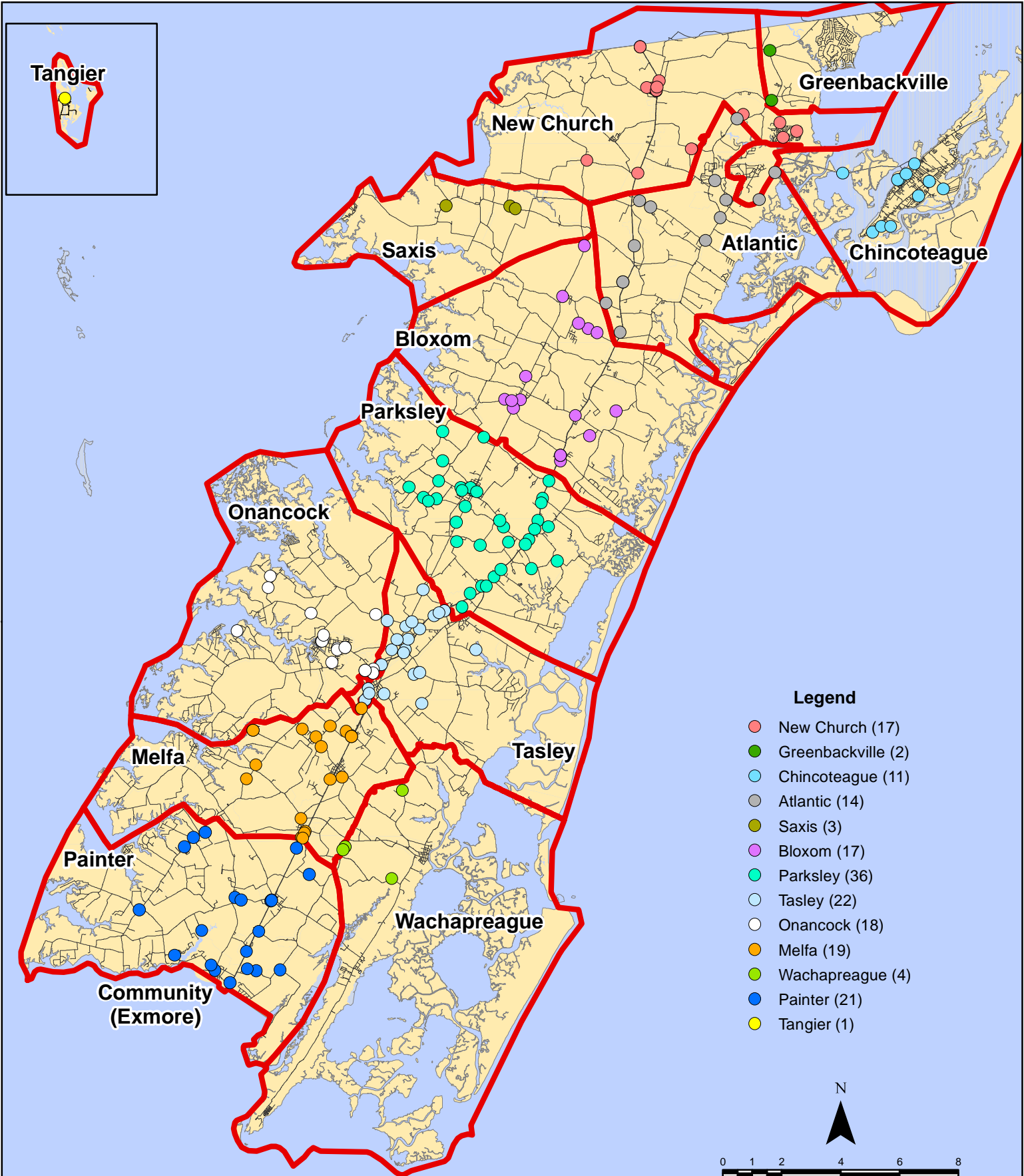
January 2018 EMS Calls By Prime Unit



January 2018 EMS Calls By Prime Unit



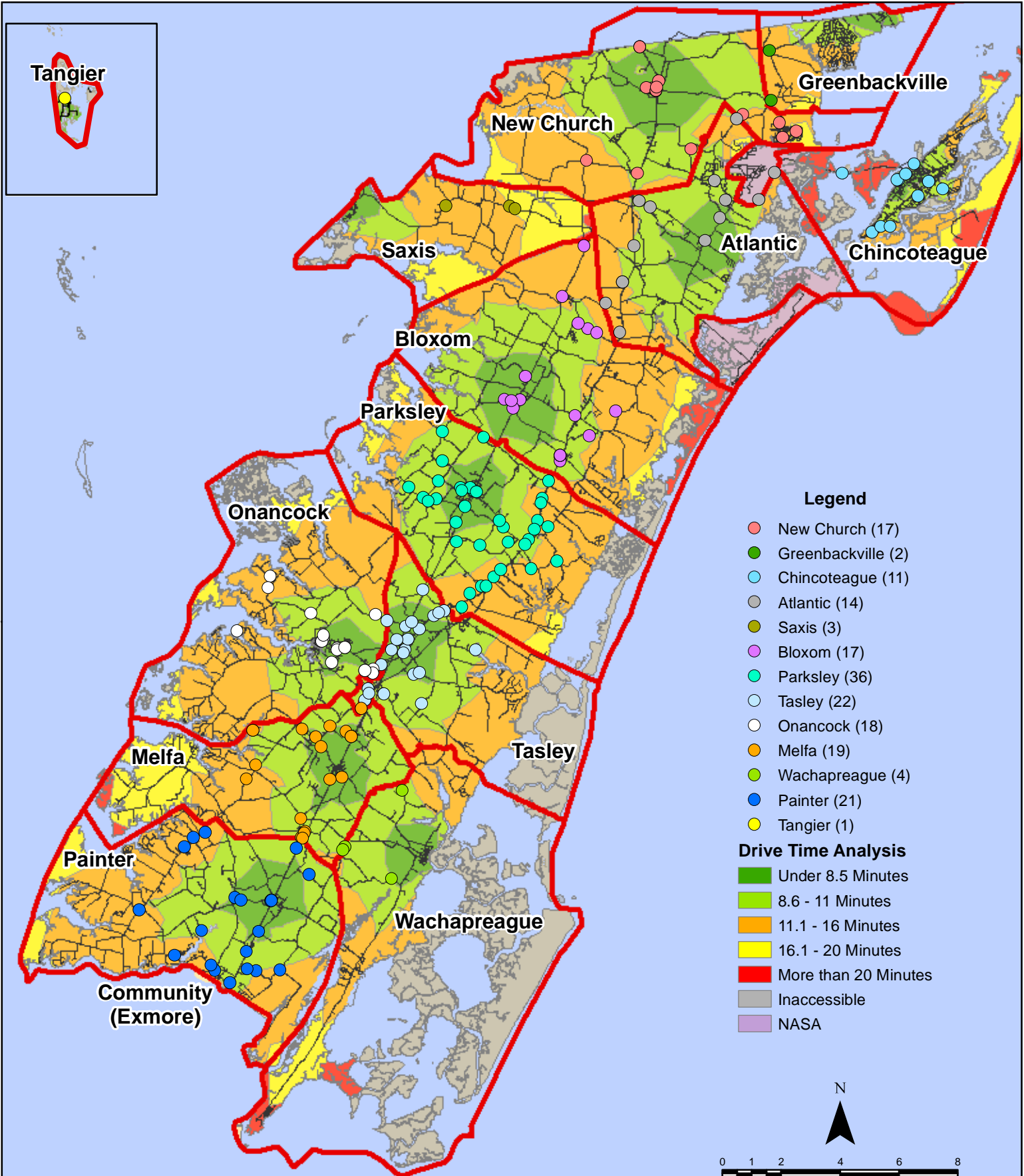
January 2018 Fire Calls By District



All points are plotted using X and Y coordinates provided by the ESVA 911 Center. Points may be plotted over one another when they are in close proximity.

Map Prepared by the Accomack County Department of Building, Planning & Economic Development using data from the ESVA 911 Center.- February 6, 2018

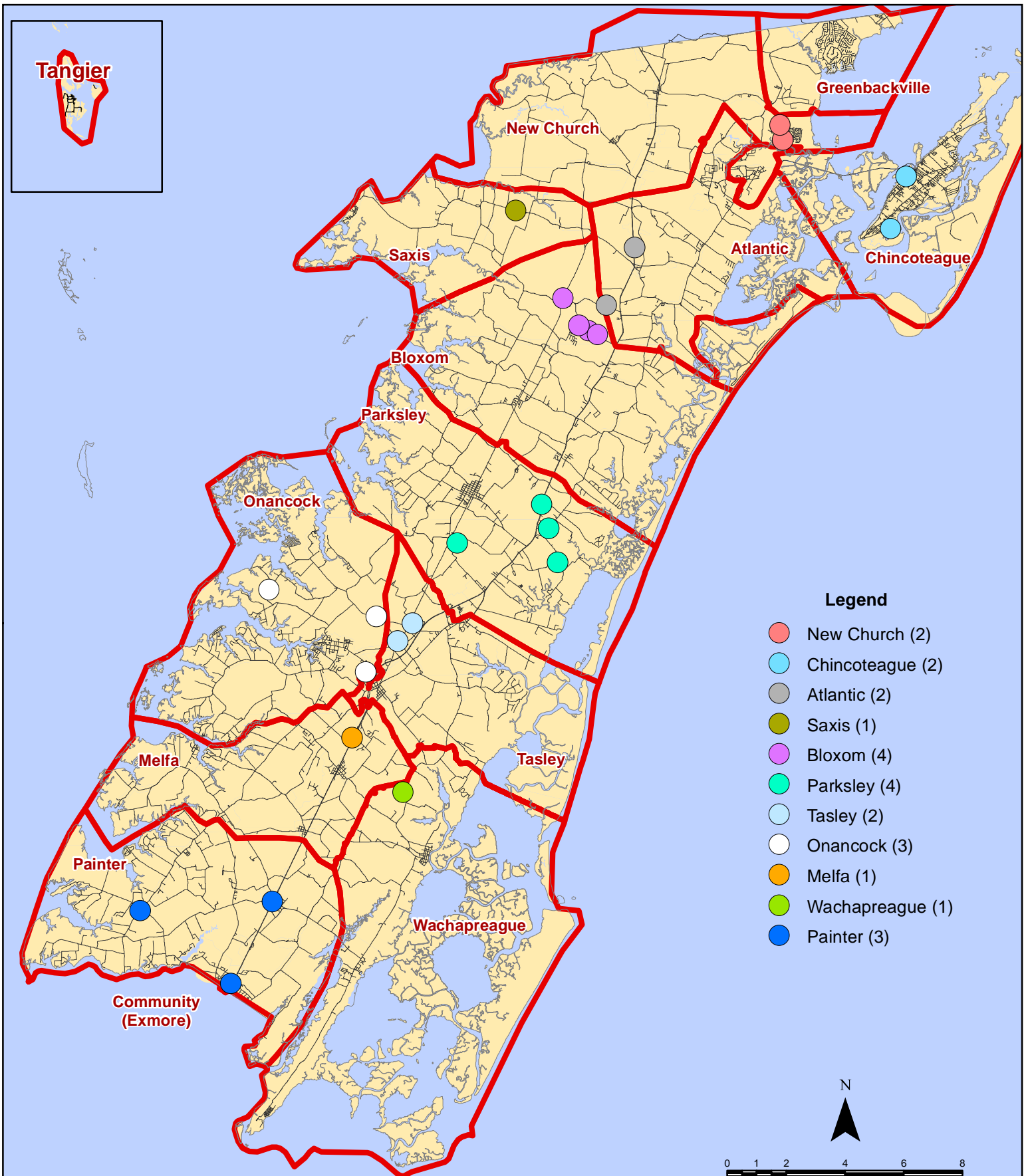
January 2018 Fire Calls By District



All points are plotted using X and Y coordinates provided by the ESVA 911 Center. Points may be plotted over one another when they are in close proximity.

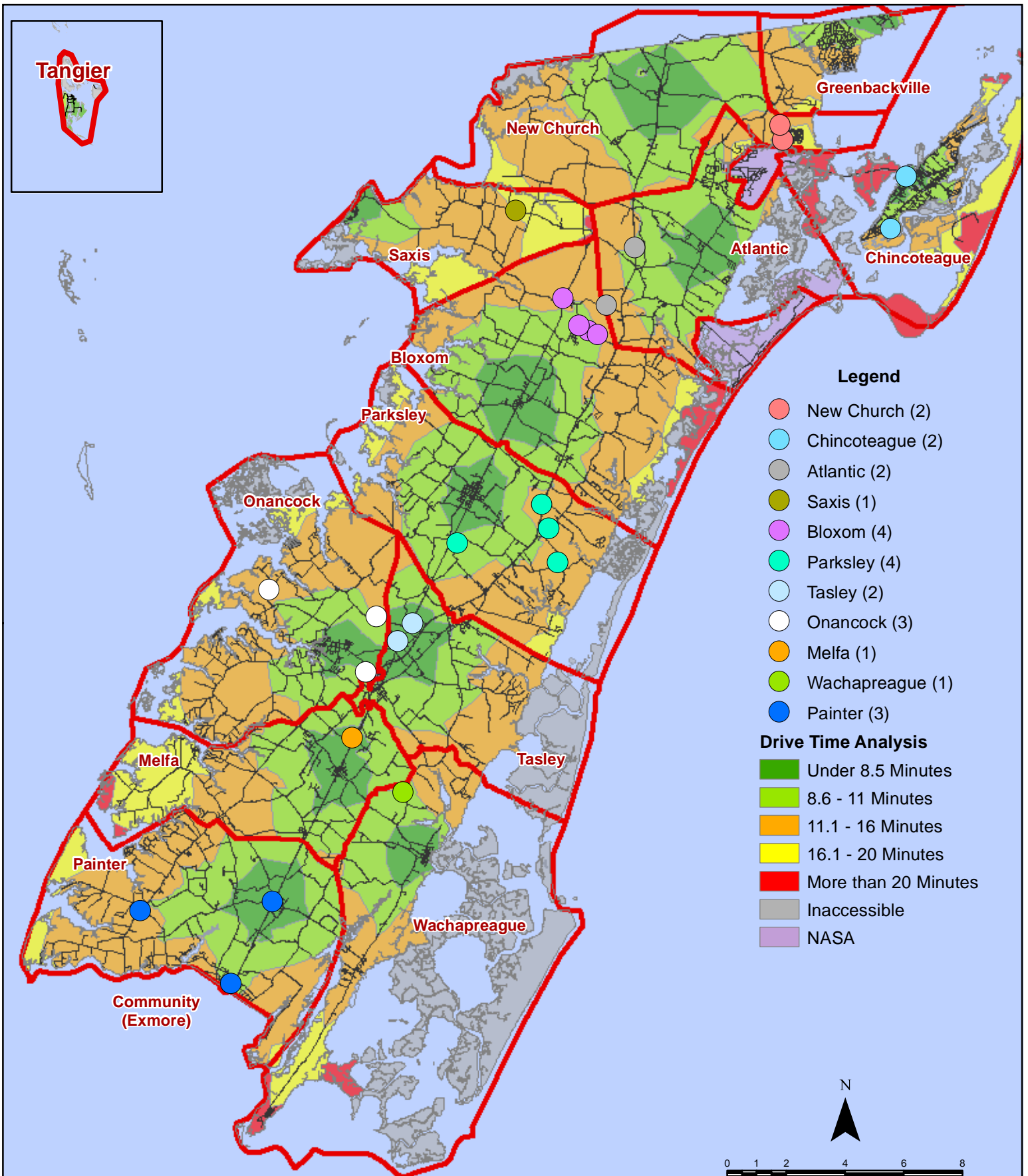
Map Prepared by the Accomack County Department of Building, Planning & Economic Development using data from the ESVA 911 Center.- February 6, 2018

January 2018 Fire Calls With Response Time Greater Than 20 Mins.

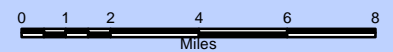


All points are plotted using X and Y coordinates provided by the ESVA 911 Center. Points may be plotted over one another when they are in close proximity.

January 2018 Fire Calls With Response Time Greater Than 20 Mins.

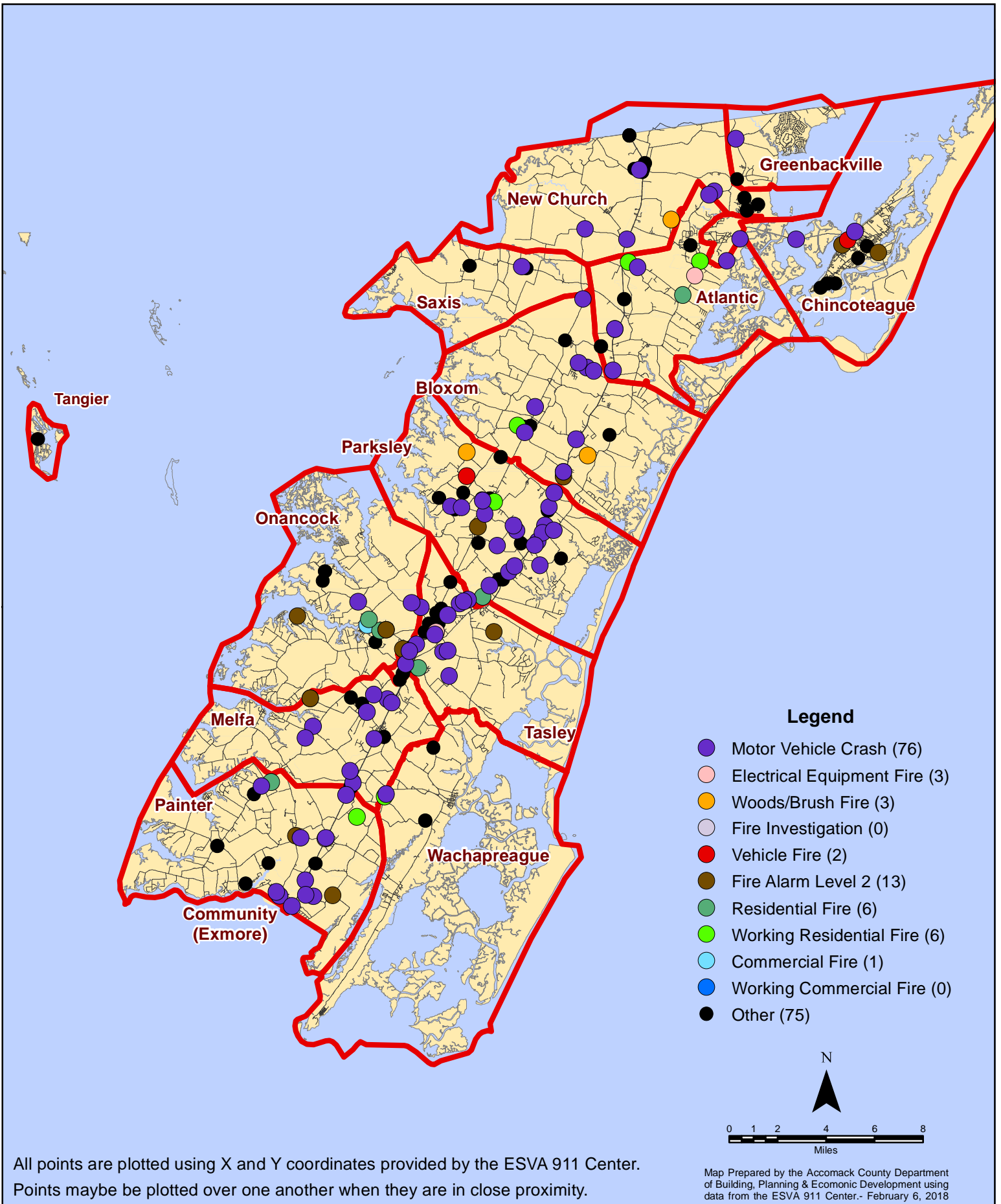


All points are plotted using X and Y coordinates provided by the ESVA 911 Center. Points may be plotted over one another when they are in close proximity.



Map Prepared by the Accomack County Department of Building, Planning & Economic Development using data from the ESVA 911 Center.- February 6, 2018

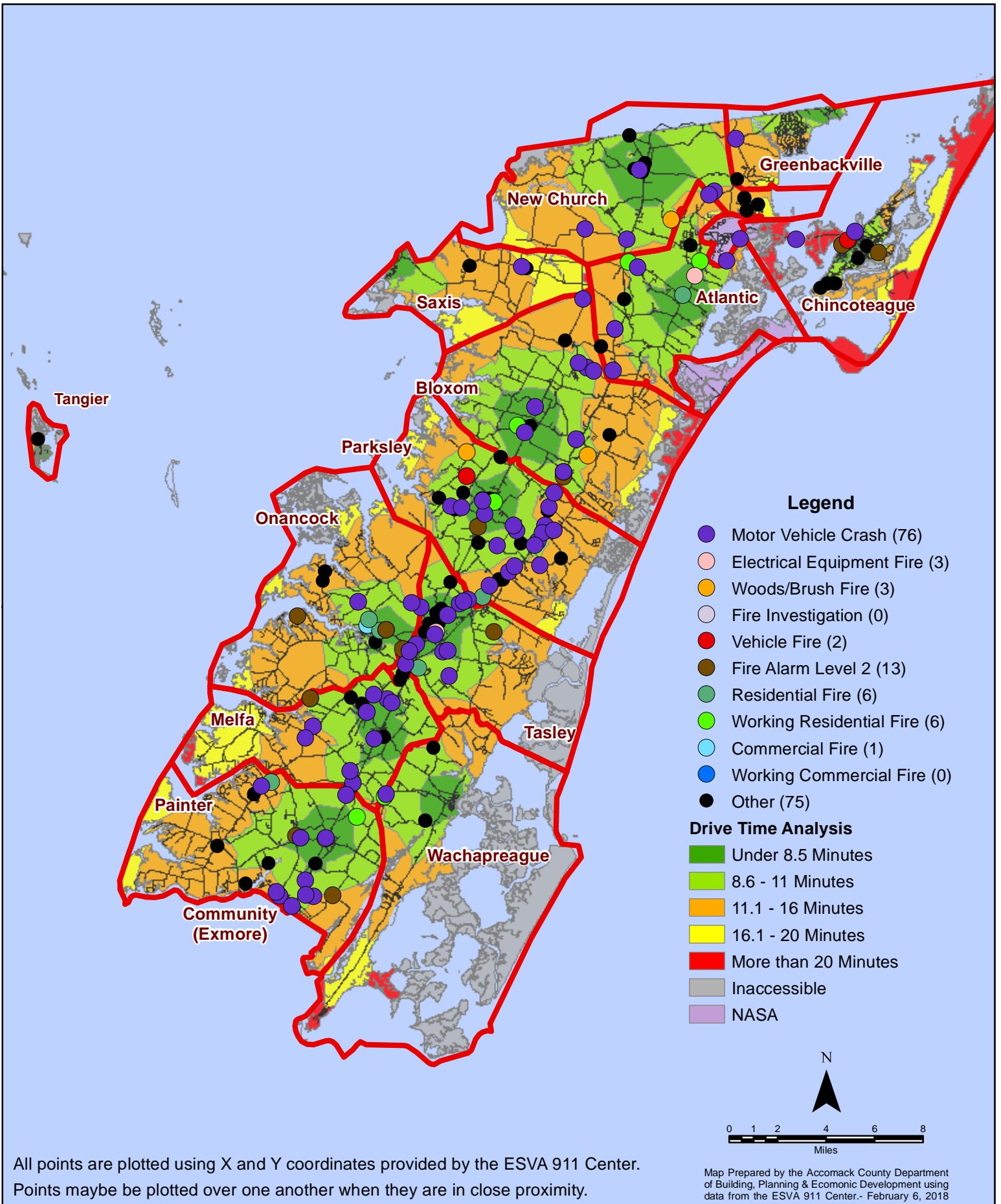
January 2018 Fire Calls By Type



All points are plotted using X and Y coordinates provided by the ESVA 911 Center. Points may be plotted over one another when they are in close proximity.

Map Prepared by the Accomack County Department of Building, Planning & Economic Development using data from the ESVA 911 Center. - February 6, 2018

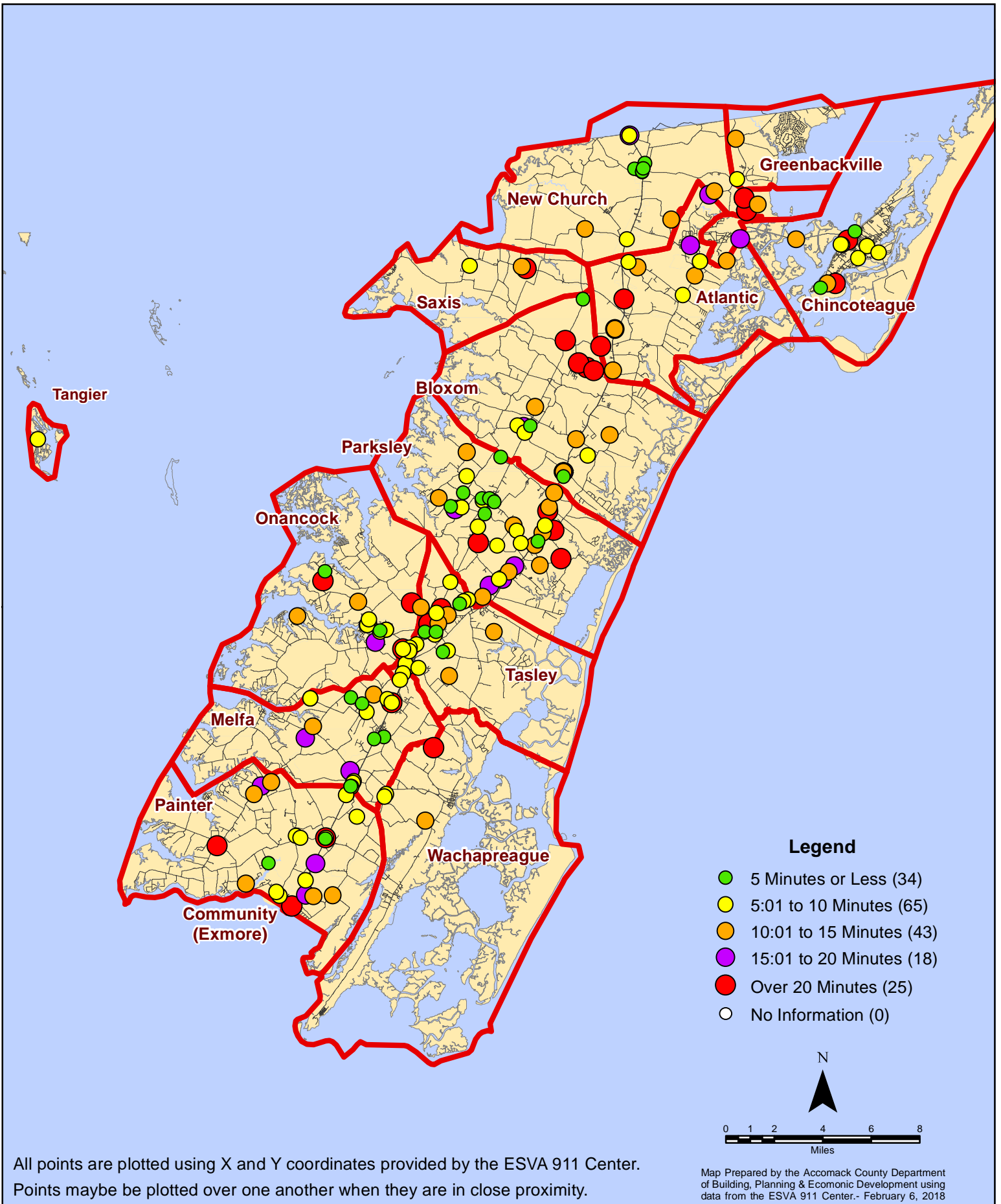
January 2018 Fire Calls By Type



All points are plotted using X and Y coordinates provided by the ESVA 911 Center. Points may be plotted over one another when they are in close proximity.

Map Prepared by the Accomack County Department of Building, Planning & Economic Development using data from the ESVA 911 Center. - February 6, 2018

January 2018 Fire Calls By Response Time



January 2018 Fire Calls By Response Time

