

# November 2017

Fire - Performance Measure Data *					
Response District	Total Calls in District	Greater than 20 min. Response Time	Calls Handled by other agency	Longest Response Time	Overall Station Benchmark %
New Church	16	1	2	0:21:47	93.8%
Greenbackville	2	0	0	0:11:17	100.0%
Chincoteague	2	0	0	0:06:33	100.0%
Atlantic	10	0	1	0:17:02	100.0%
Saxis	2	0	0	0:17:05	100.0%
Bloxom	14	1	0	0:24:05	92.9%
Parksley	14	0	0	0:14:24	100.0%
Tasley	12	0	2	0:11:38	100.0%
Onancock	9	0	0	0:11:28	100.0%
Melfa	14	0	3	0:10:37	100.0%
Wachapreague	0	0	0	0	#DIV/0!
Painter	8	0	0	0:15:31	100.0%
Tangier	0	0	0	0	#DIV/0!
<b>System Totals</b>	<b>103</b>	<b>2</b>	<b>8</b>	<b>0:24:05</b>	<b>98.1%</b>

EMS - Performance Measure Data						
Response District	Total Calls in District	Greater than 20 min. Response Time	Longest Response Time	Calls Handled by other agency	Station Benchmark Compliance %	Overall Station Reliability %
Greenbackville	18	1	0:20:39	17	94.4%	5.6%
Chincoteague	69	1	0:39:27	6	98.6%	91.3%
Saxis	13	0	0:14:55	5	100.0%	61.5%
Bloxom	44	1	0:20:40	4	97.7%	90.9%
Parksley	91	0	0:15:57	3	100.0%	96.7%
Onancock	75	1	0:21:59	3	98.7%	96.0%
Melfa	51	0	0:14:58	5	100.0%	90.2%
Wachapreague (Painter)	35	3	0:37:16	1	91.4%	97.1%
Oak Hall	92	2	0:33:39	5	97.8%	94.6%
Tangier	17	0	0:14:06	0	100.0%	100.0%
Community (Exmore)	15	0	0:15:38	3	100.0%	80.0%
<b>System Totals</b>	<b>520</b>	<b>9</b>	<b>0:37:16</b>	<b>52</b>	<b>98.3%</b>	<b>90.0%</b>

Station Receiving Aid	Station Giving Aid														
	Greenbackville	Chincoteague	Saxis	Bloxom	Parksley	Onancock	Melfa	Wachapreague/Painter	Oak Hall	Community (Exmore)	Northampton	Wallops	NORS	2nd Call	3rd Call
Greenbackville		2							14				1	17	
Chincoteague									5			1	2	3	1
Saxis				1					4				5		
Bloxom					2				2				1	3	
Parksley				3										3	
Onancock					1		2						2	1	
Melfa						2	3						4	1	
Wachapreague (Painter)							1						1		
Oak Hall		1		4										5	
Community (Exmore)								2			1		2	1	
Northampton Co.															
Wallops															
<b>Totals</b>	<b>0</b>	<b>3</b>	<b>0</b>	<b>8</b>	<b>3</b>	<b>2</b>	<b>3</b>	<b>5</b>	<b>25</b>	<b>0</b>	<b>1</b>	<b>2</b>	<b>34</b>	<b>17</b>	<b>1</b>

Hospital Destination by Unit	Station Giving Aid		
	Riverside - Shore Memorial	PRMC	Other
Greenbackville			1
Chincoteague	10	32	
Saxis	5	2	
Bloxom	31	3	
Parksley	62		
Onancock	53		
Melfa	29		
Wach. (Painter)	29		
Oak Hall	32	36	
Wallops			
<b>Totals</b>	<b>251</b>	<b>73</b>	<b>1</b>

**Benchmark** = The Accomack County Board of Supervisors established a 20 minute standard for emergency response.

**NORS** = No Response by station or the call was handled by another station or agency.

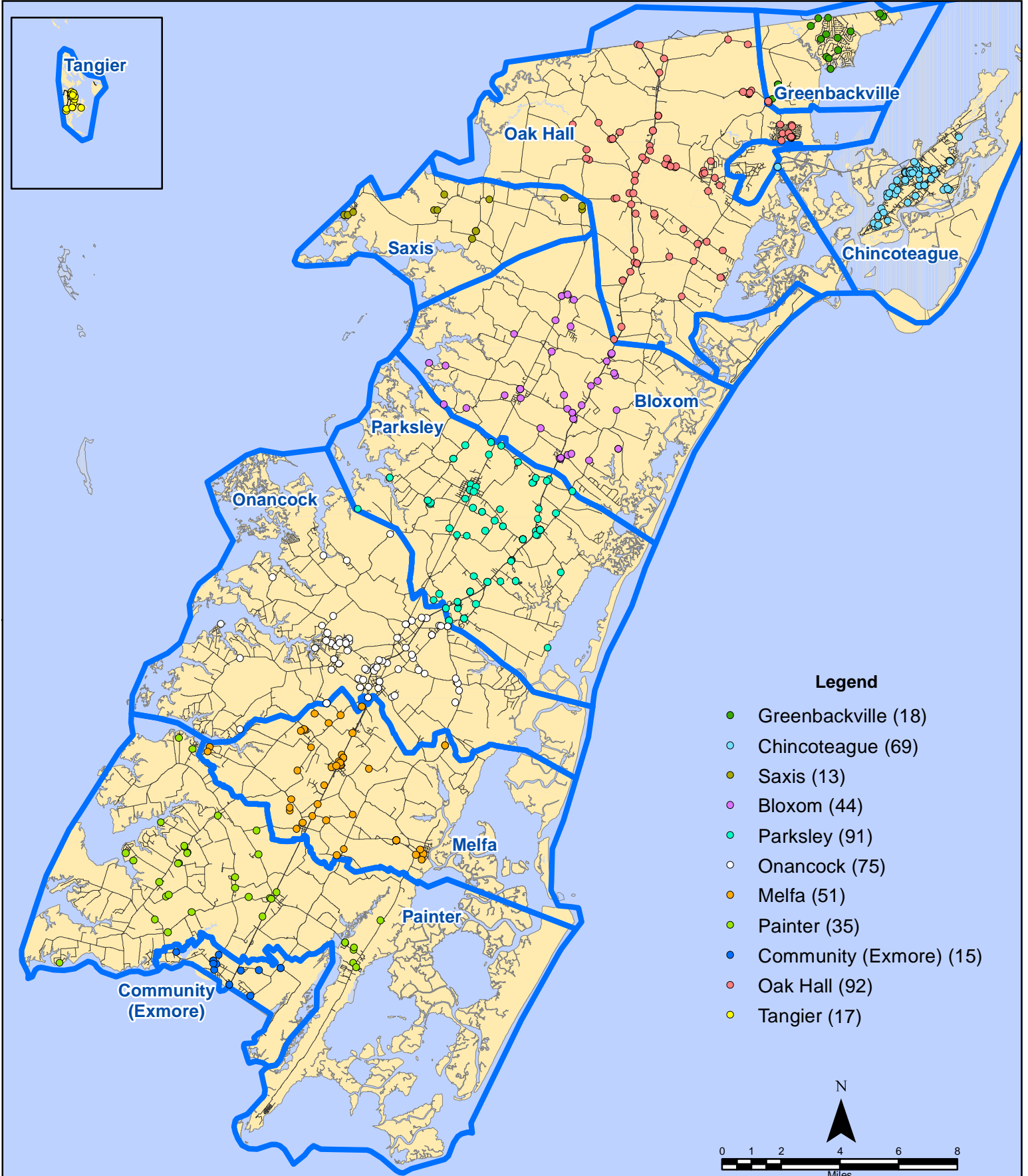
**2nd Call** = 2nd ambulance call received while first ambulance was on another call.

**3rd Call** = 3rd ambulance call received while first & second ambulances were on other calls.

\* This data excludes F1 Med (Medical Assist) calls in the Fire Data.

This information was prepared using data supplied by the Eastern Shore of Virginia 911 Center. This information is original incident data only and may not be representative of all units and/or stations who responded to an incident.

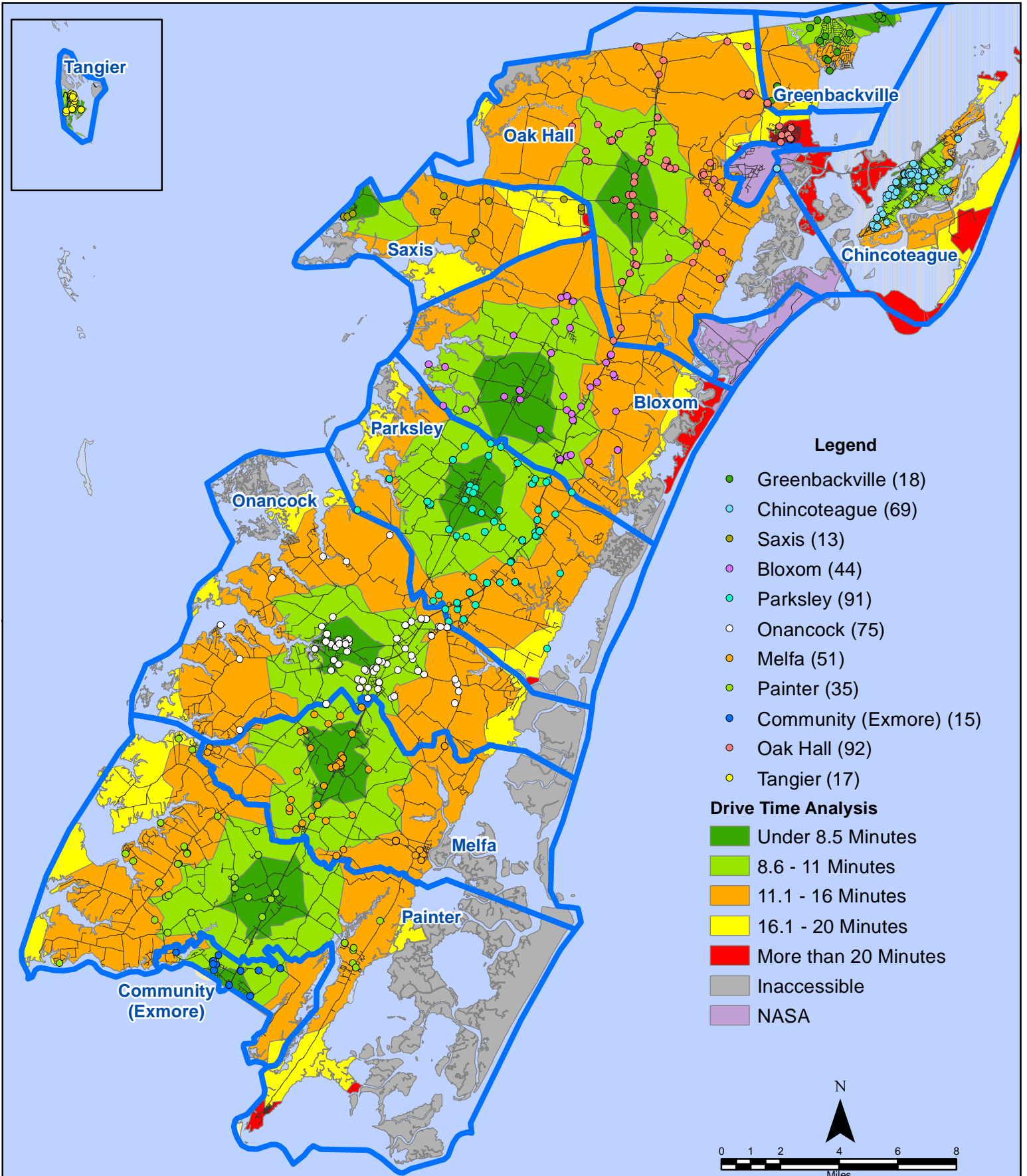
# November 2017 EMS Calls By District



All points are plotted using X and Y coordinates provided by the ESVA 911 Center.  
Points may be plotted over one another when they are in close proximity.

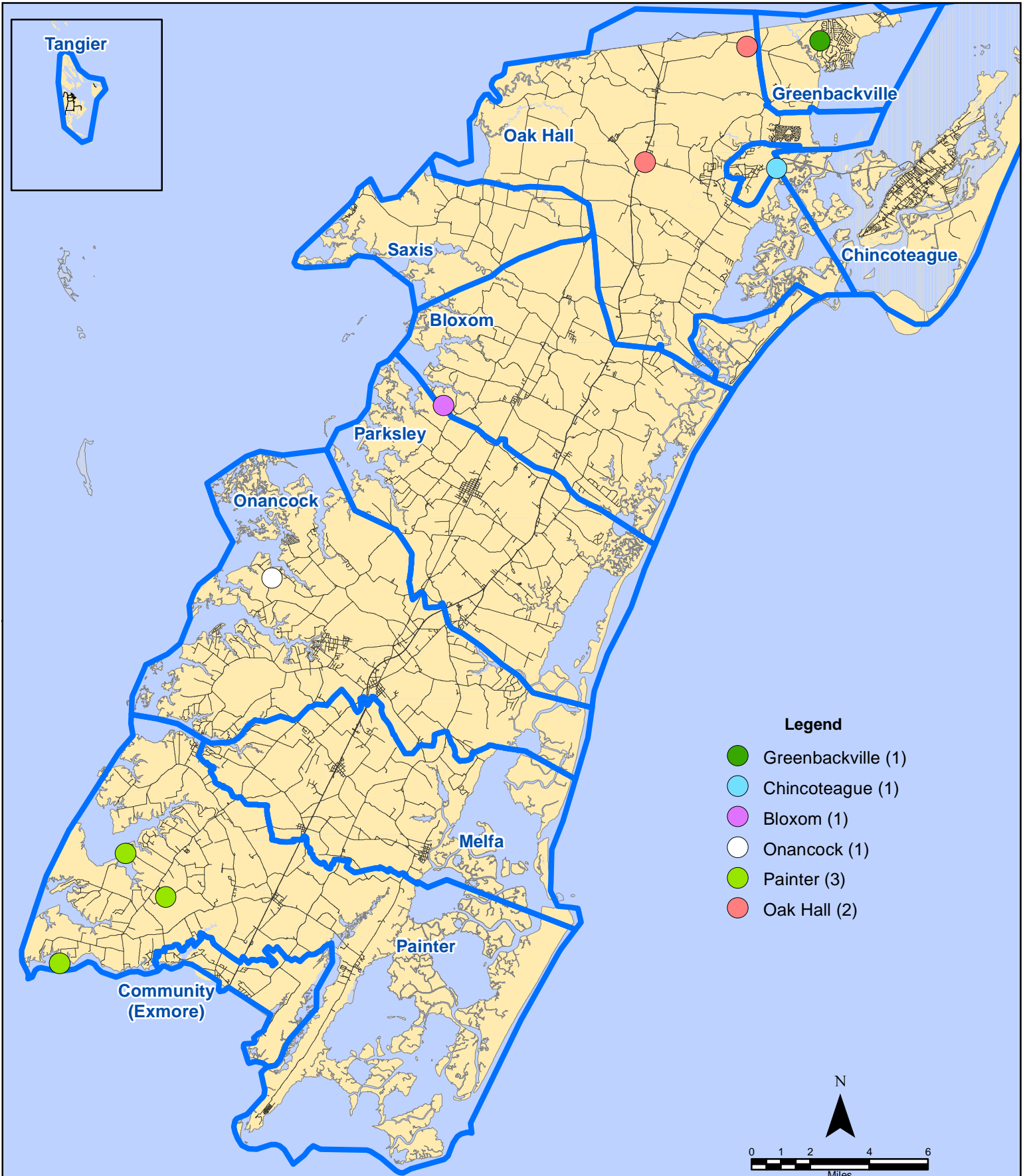
Map Prepared by the Accomack County Department of Building, Planning & Economic Development using data from the ESVA 911 Center.- December 14, 2017

# November 2017 EMS Calls By District



All points are plotted using X and Y coordinates provided by the ESVA 911 Center. Points may be plotted over one another when they are in close proximity.

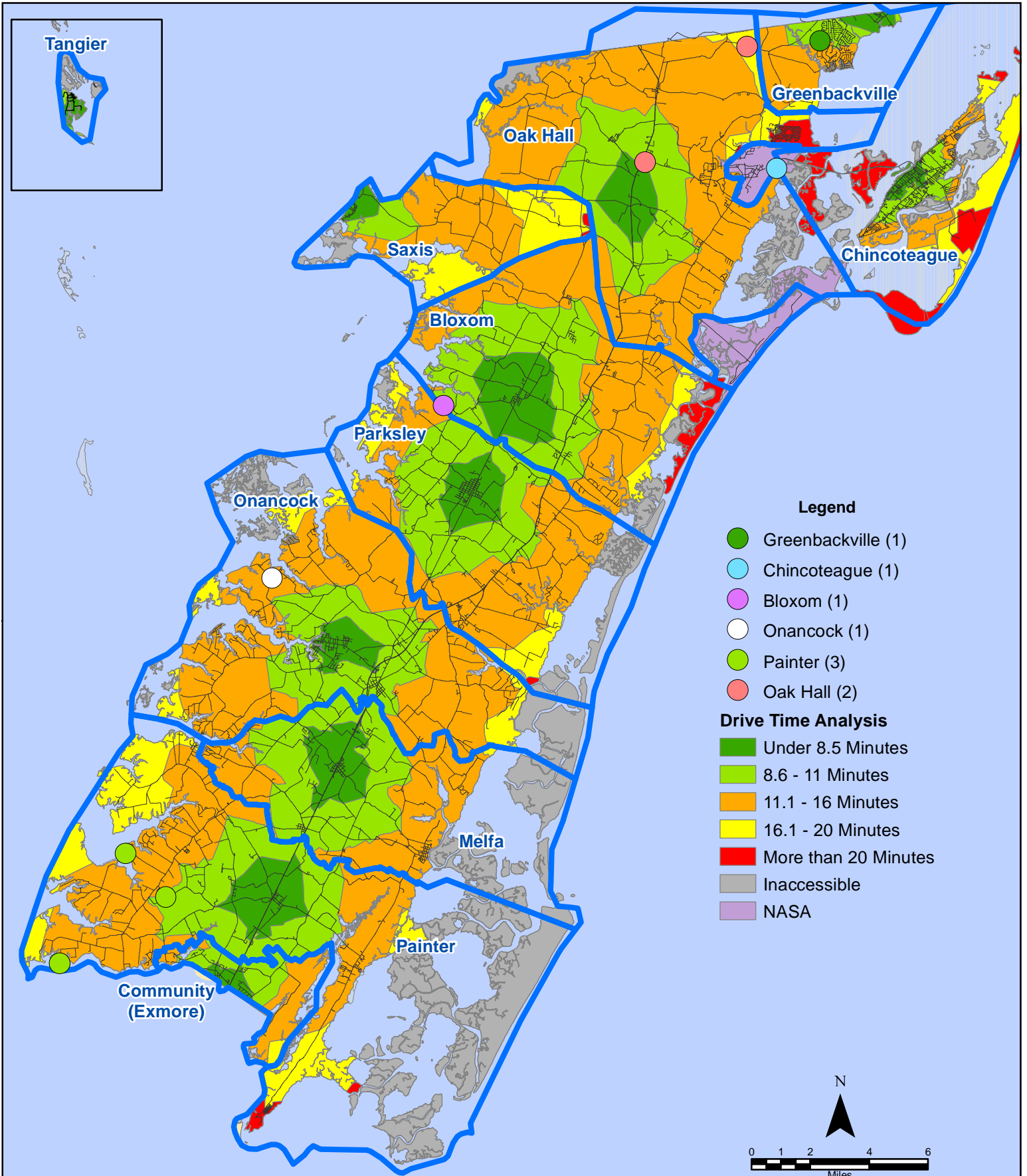
# November 2017 EMS Calls With Response Time Greater Than 20 Mins.



All points are plotted using X and Y coordinates provided by the ESVA 911 Center.  
Points may be plotted over one another when they are in close proximity.

Map Prepared by the Accomack County Department of Building, Planning & Economic Development using data from the ESVA 911 Center. - December 14, 2017

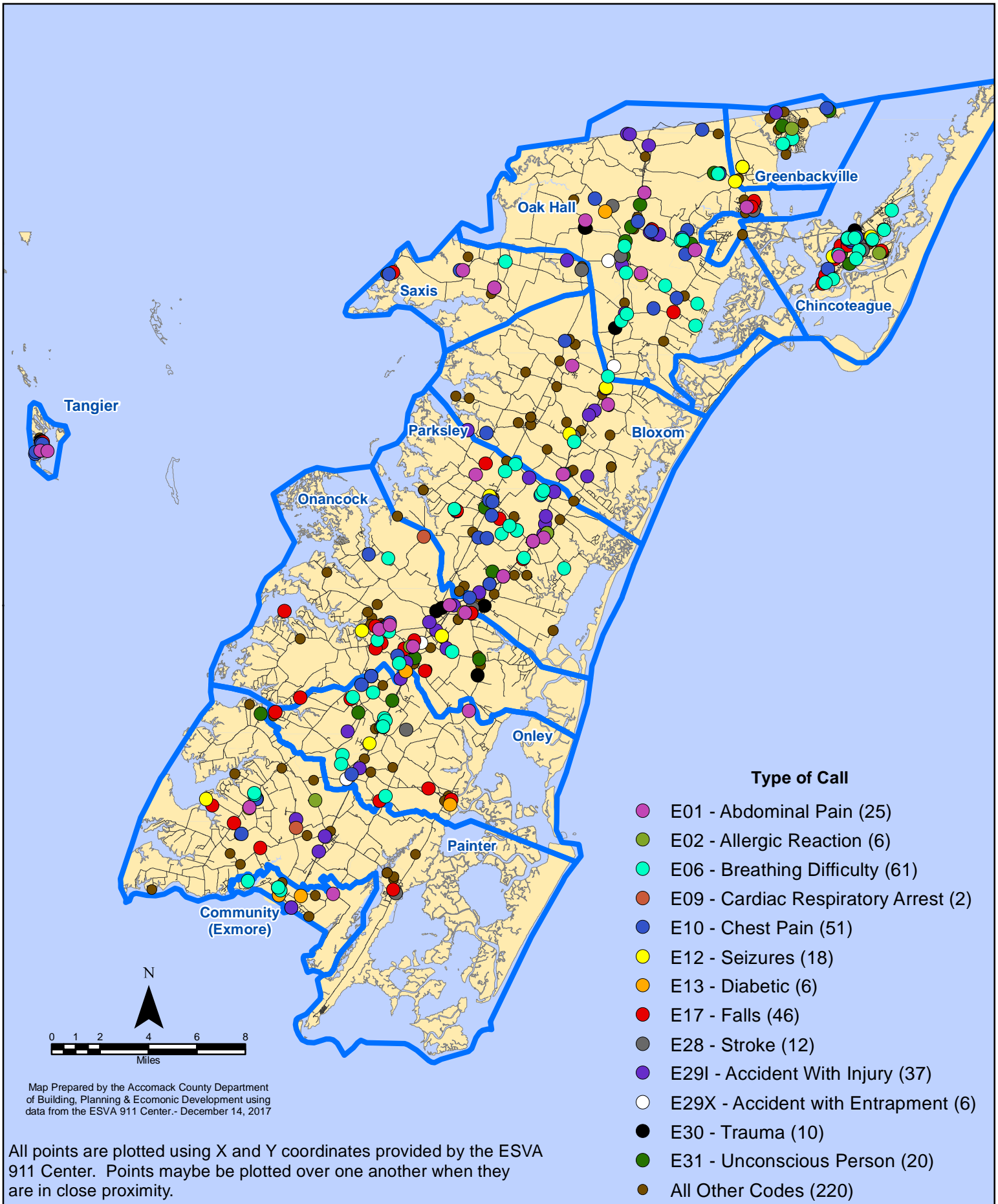
# November 2017 EMS Calls With Response Time Greater Than 20 Mins.



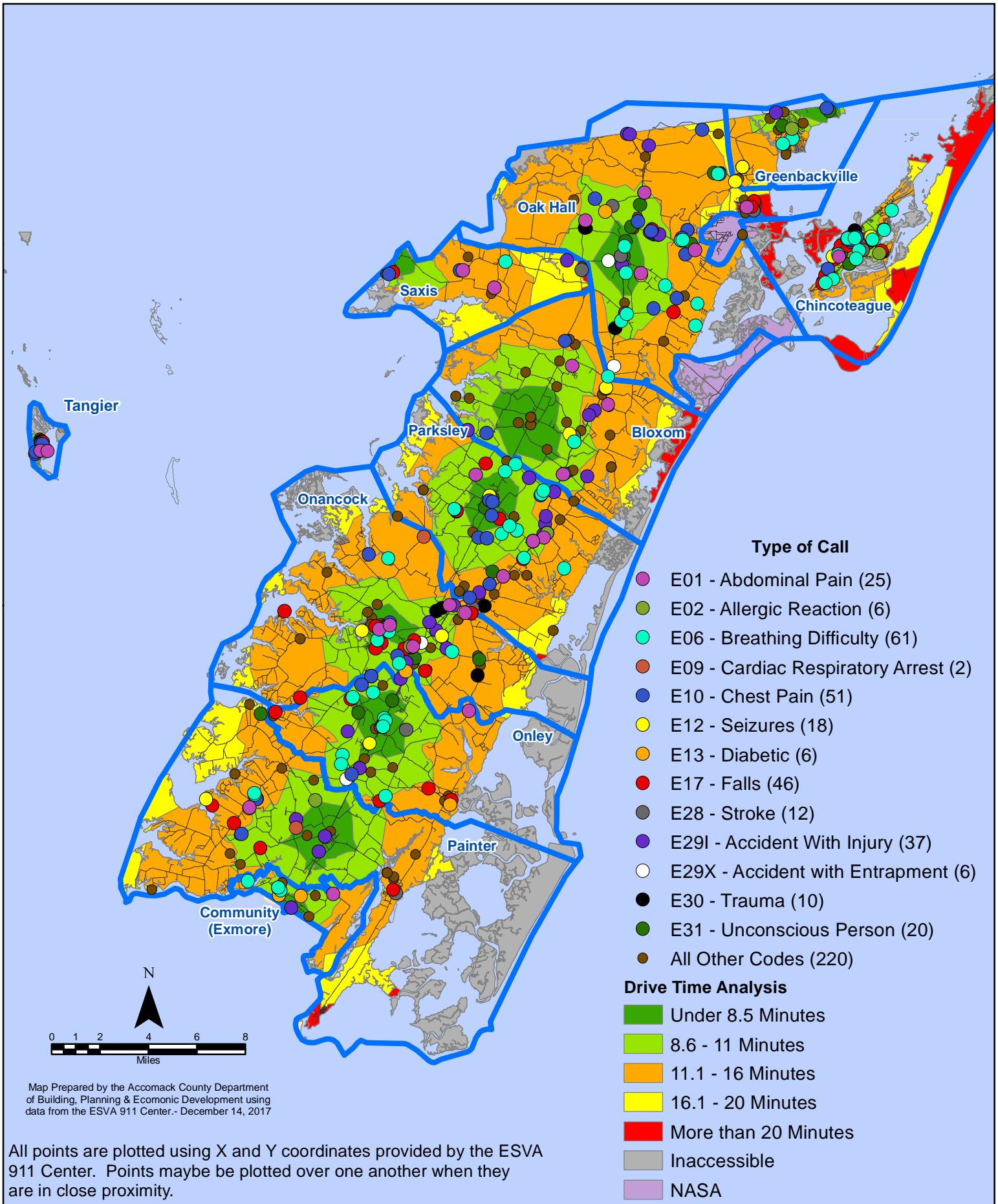
All points are plotted using X and Y coordinates provided by the ESVA 911 Center. Points may be plotted over one another when they are in close proximity.

Map Prepared by the Accomack County Department of Building, Planning & Economic Development using data from the ESVA 911 Center. - December 14, 2017

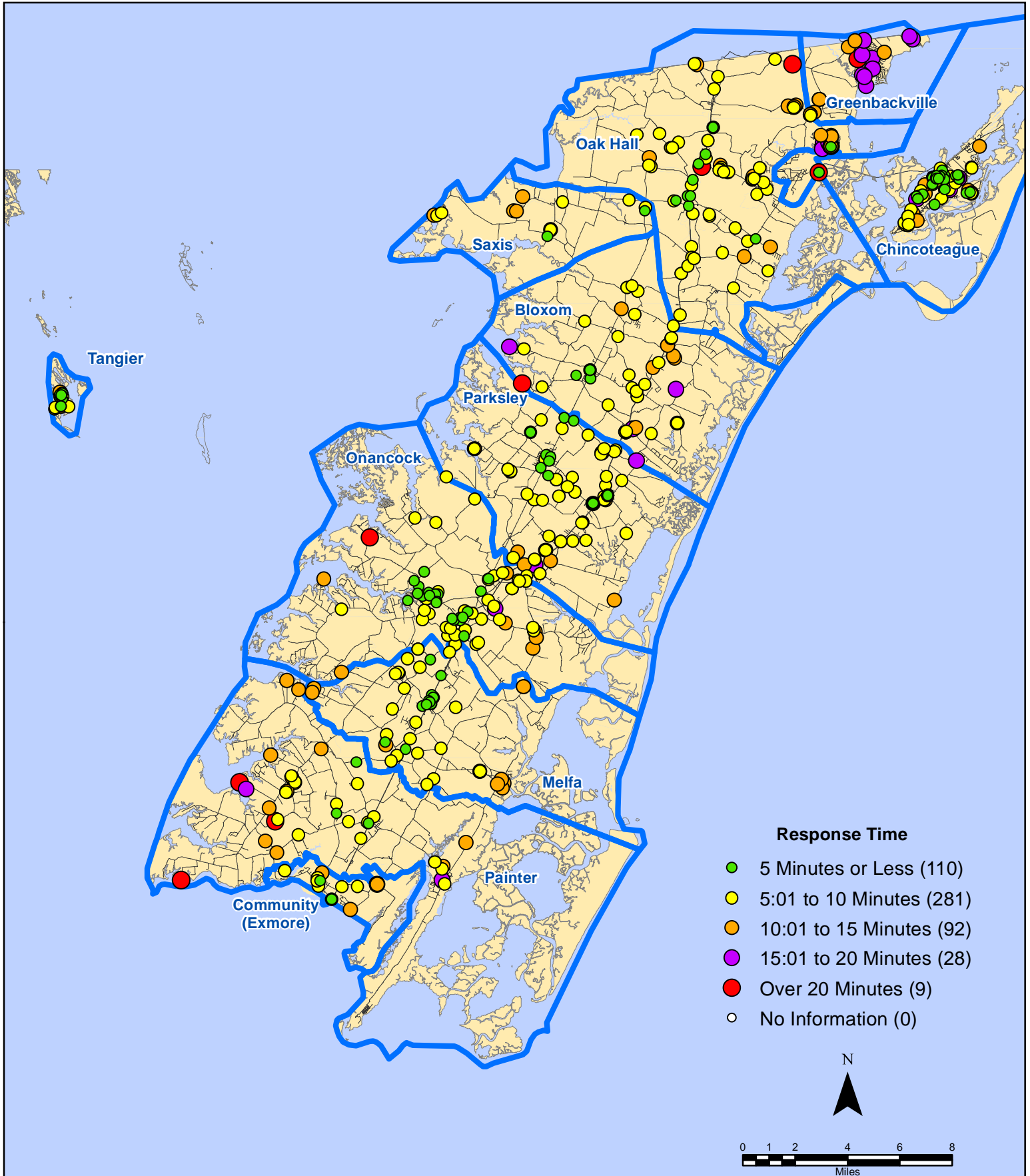
# November 2017 EMS Calls By Type



# November 2017 EMS Calls By Type



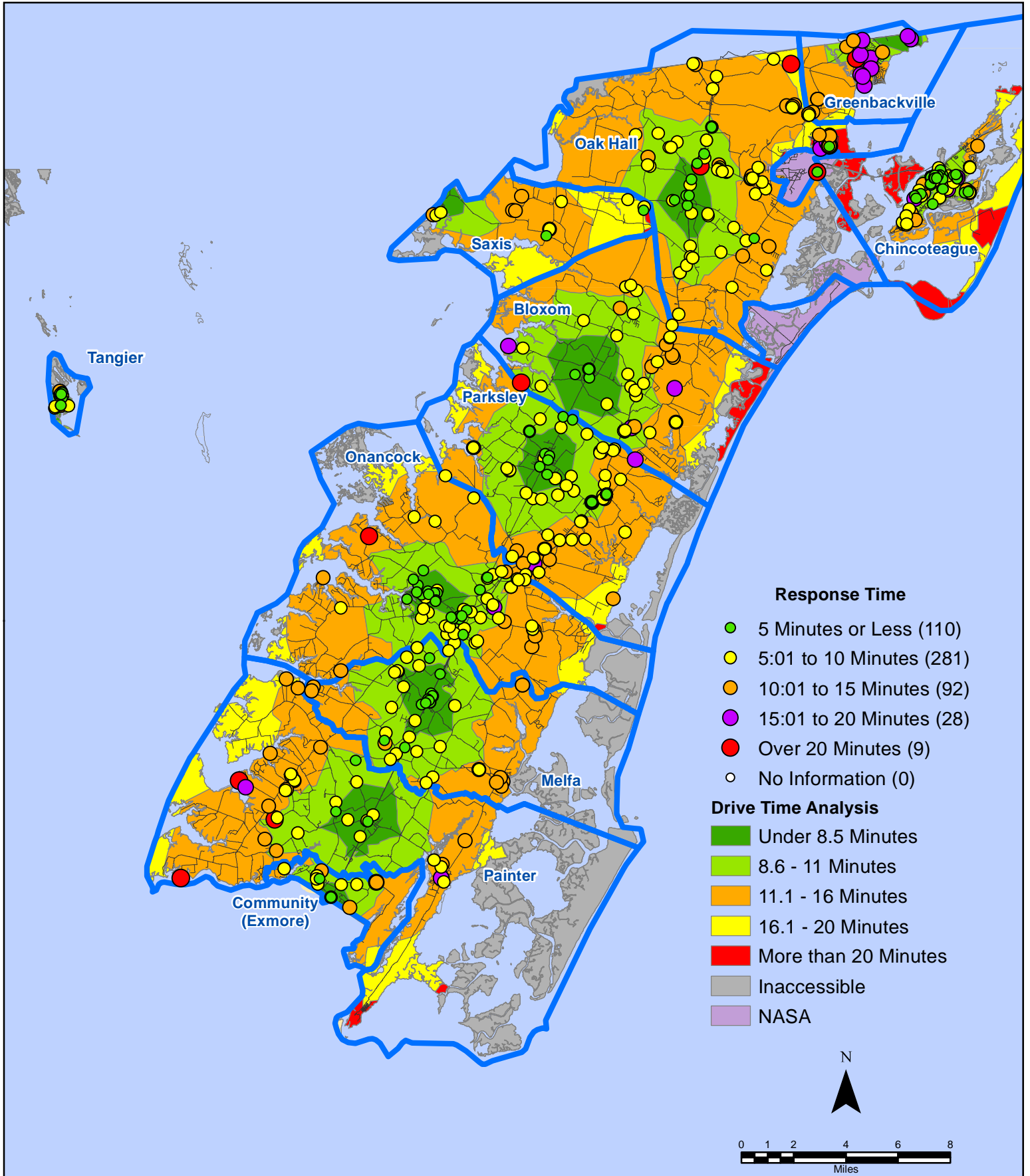
# November 2017 EMS Calls By Response Time



All points are plotted using X and Y coordinates provided by the ESVA 911 Center.  
Points may be plotted over one another when they are in close proximity.

Map Prepared by the Accomack County Department of Building, Planning & Economic Development using data from the ESVA 911 Center.- December 14, 2017

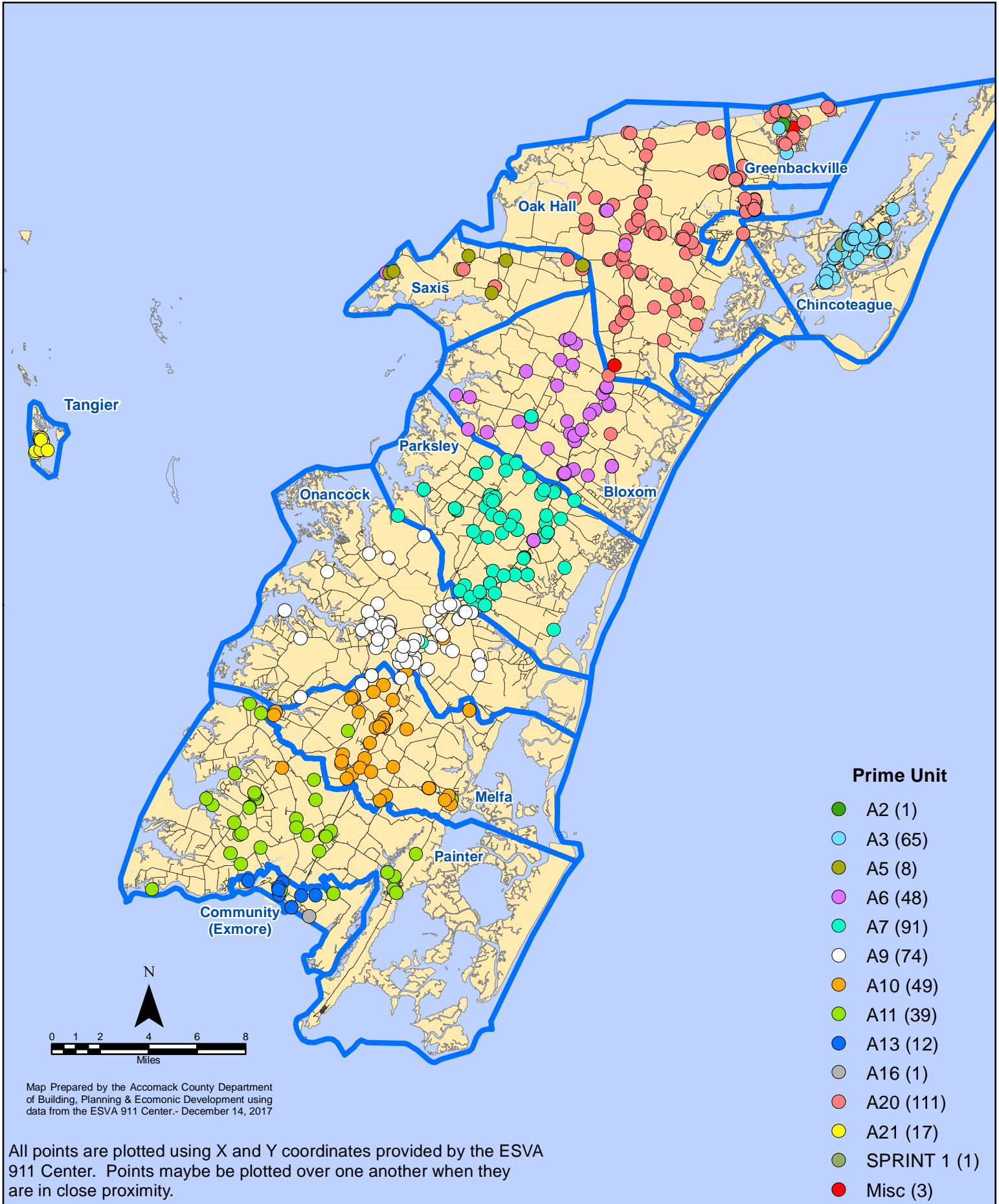
# November 2017 EMS Calls By Response Time



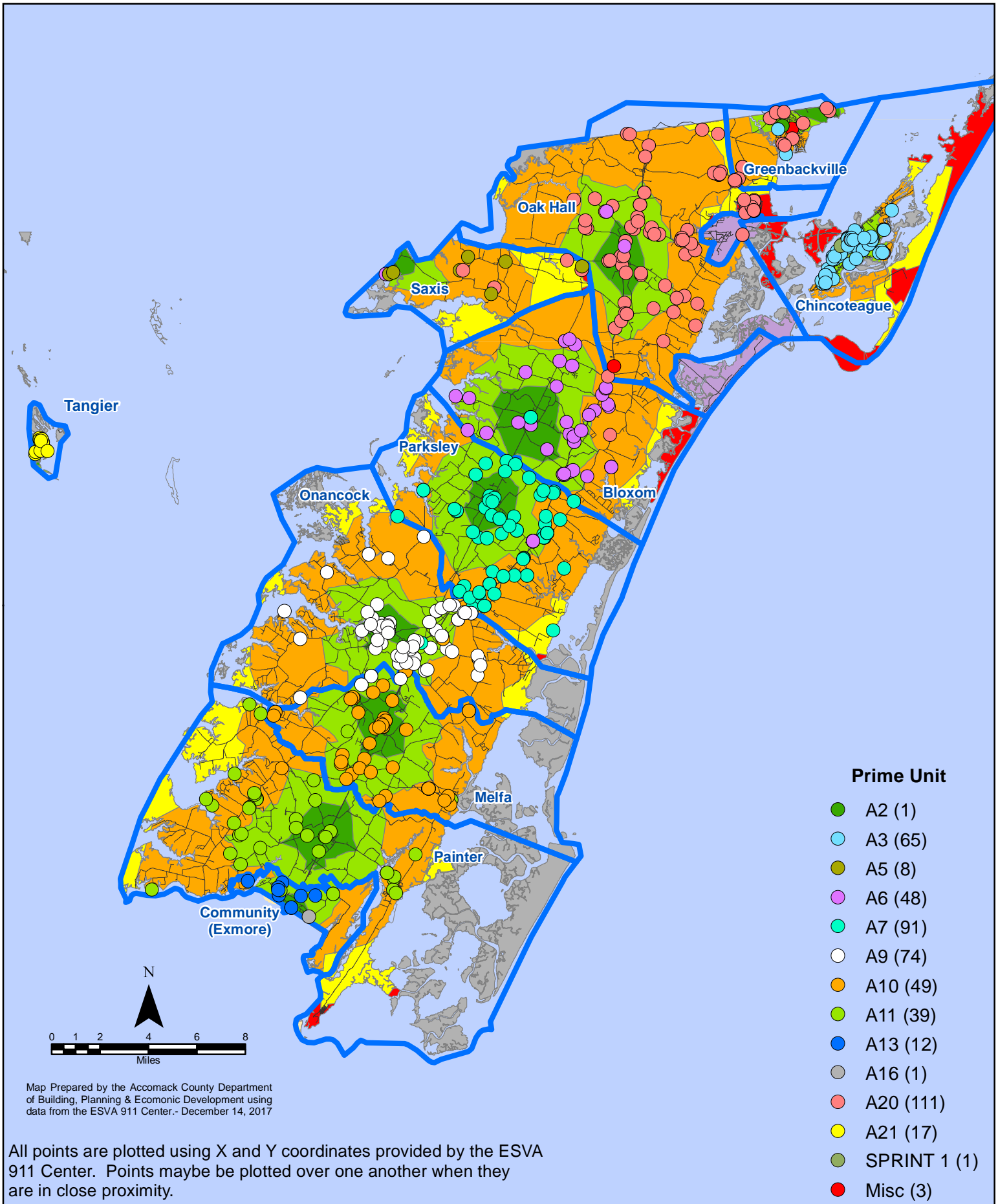
All points are plotted using X and Y coordinates provided by the ESVA 911 Center.  
Points may be plotted over one another when they are in close proximity.

Map Prepared by the Accomack County Department of Building, Planning & Economic Development using data from the ESVA 911 Center.- December 14, 2017

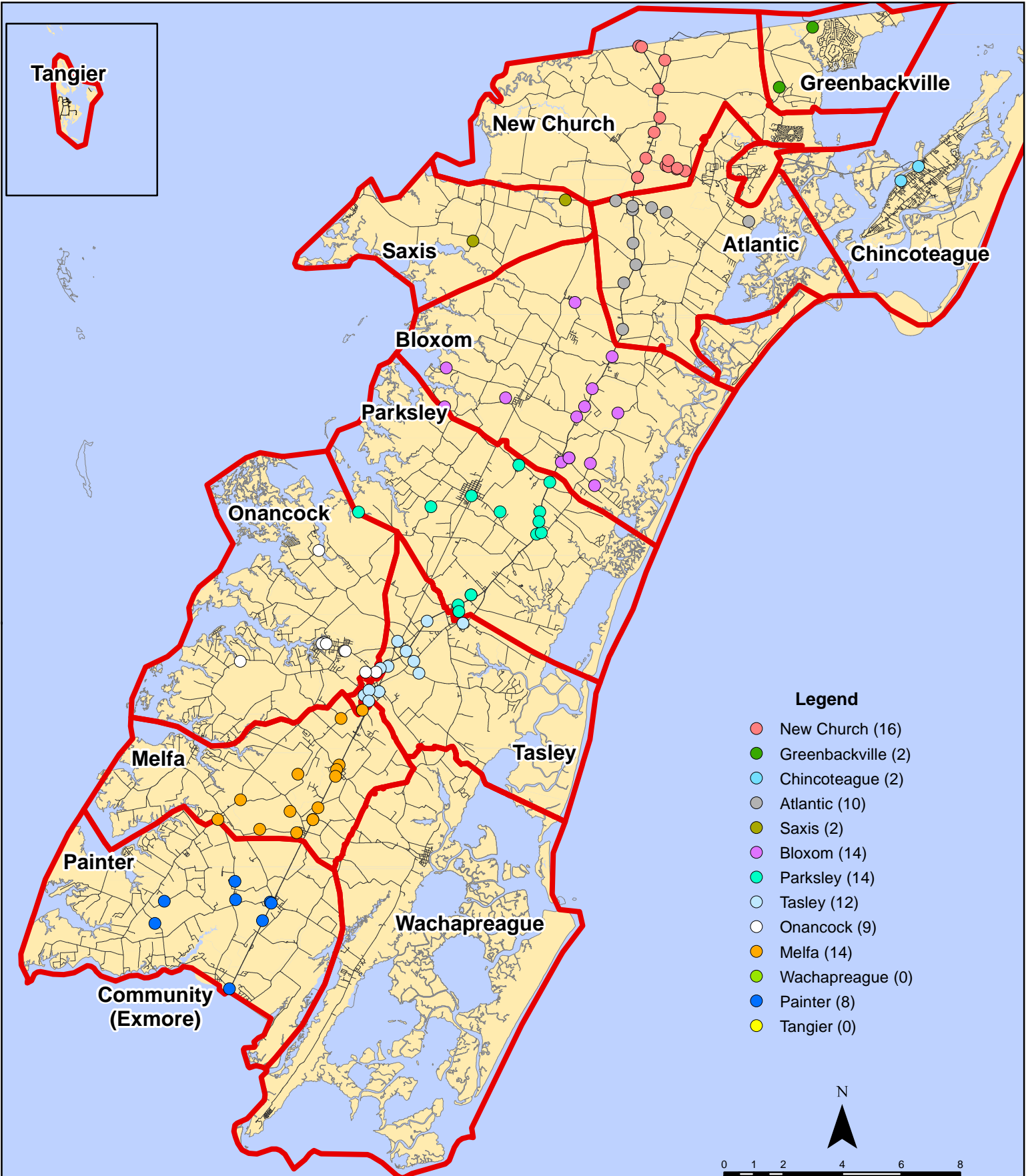
# November 2017 EMS Calls By Prime Unit



# November 2017 EMS Calls By Prime Unit



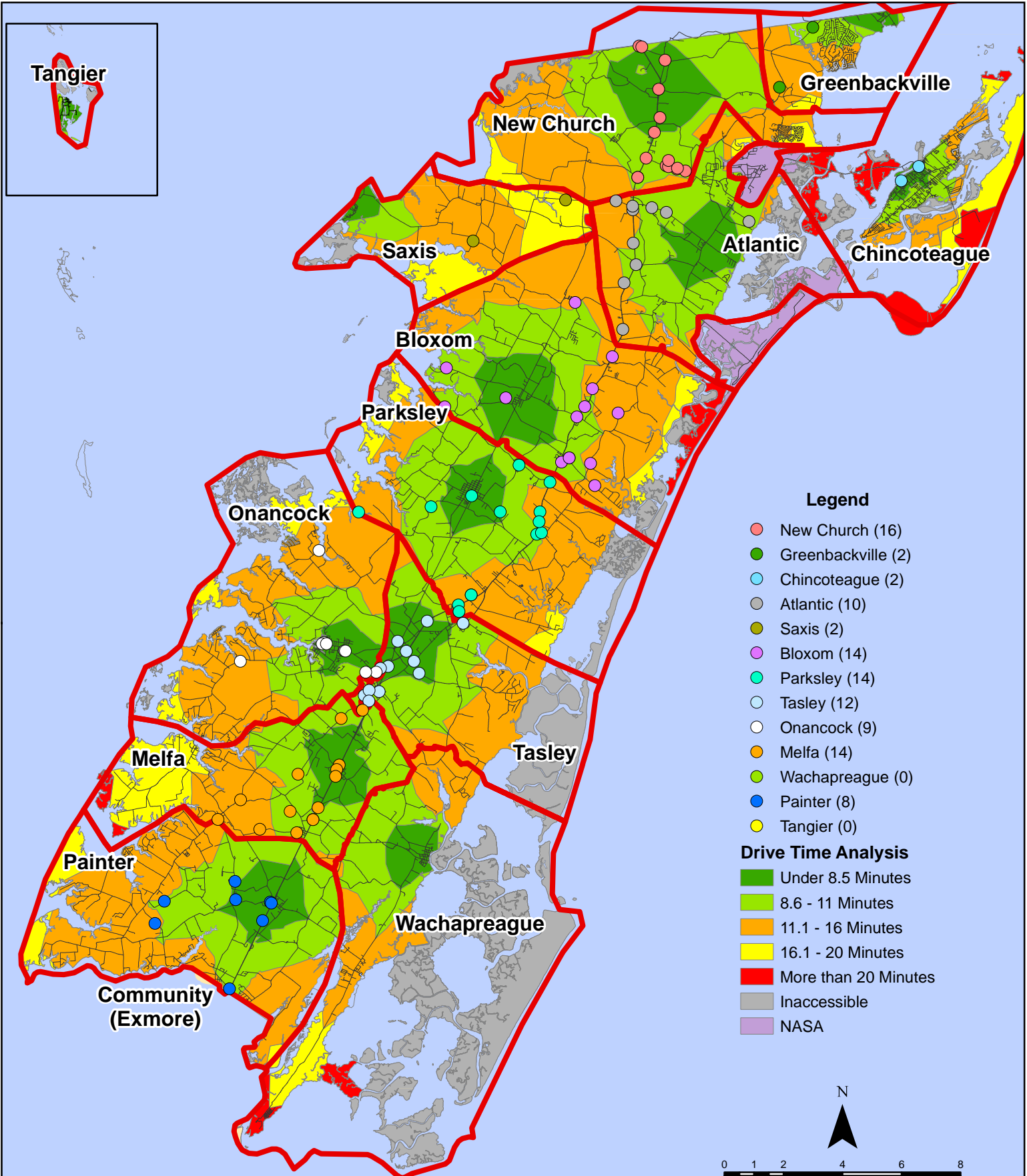
# November 2017 Fire Calls By District



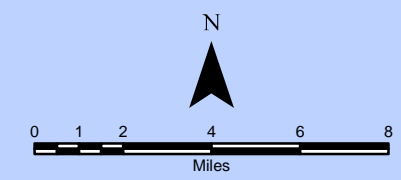
All points are plotted using X and Y coordinates provided by the ESVA 911 Center. Points may be plotted over one another when they are in close proximity.

Map Prepared by the Accomack County Department of Building, Planning & Economic Development using data from the ESVA 911 Center.- December 12, 2017

# November 2017 Fire Calls By District

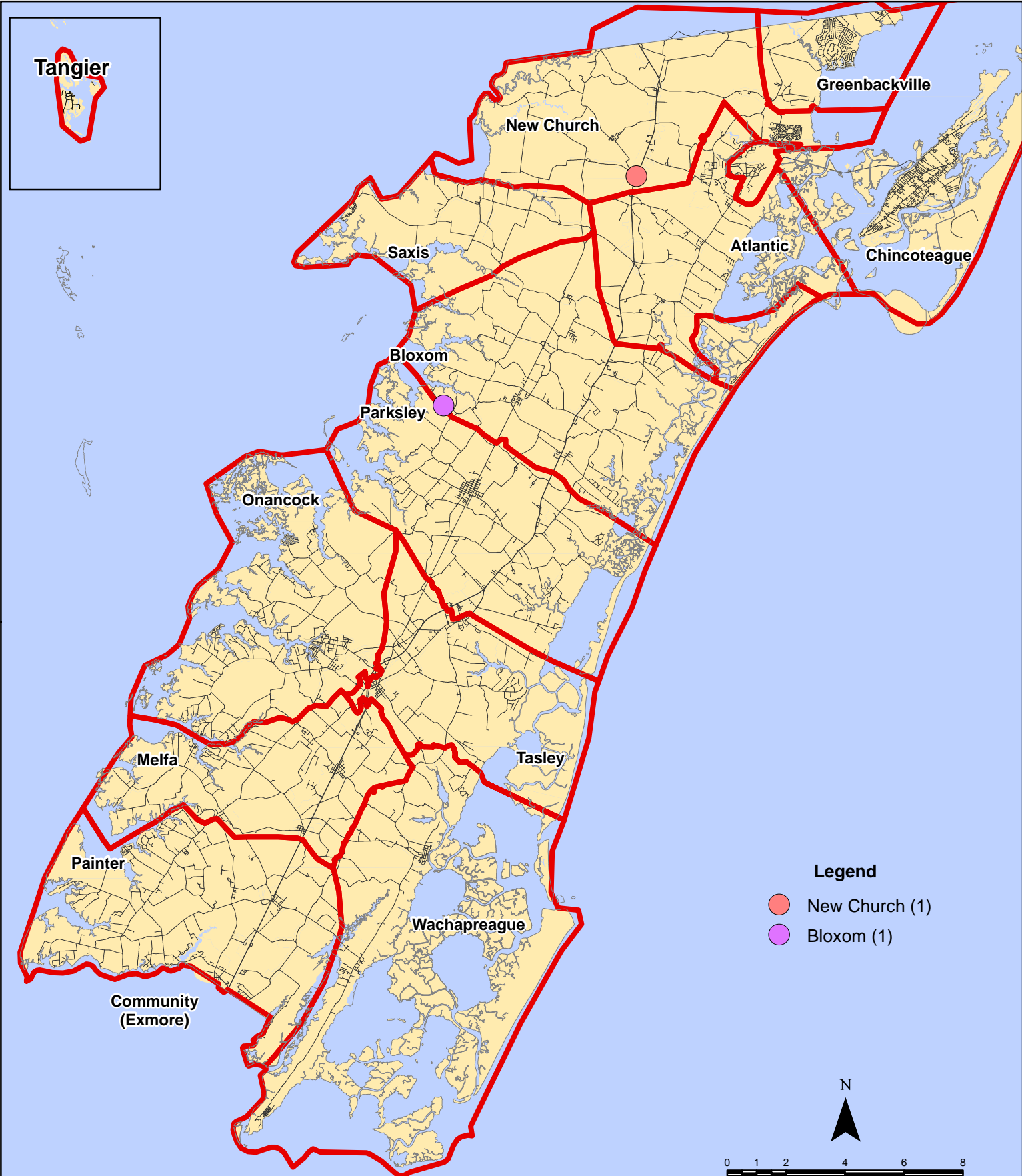


All points are plotted using X and Y coordinates provided by the ESVA 911 Center. Points may be plotted over one another when they are in close proximity.



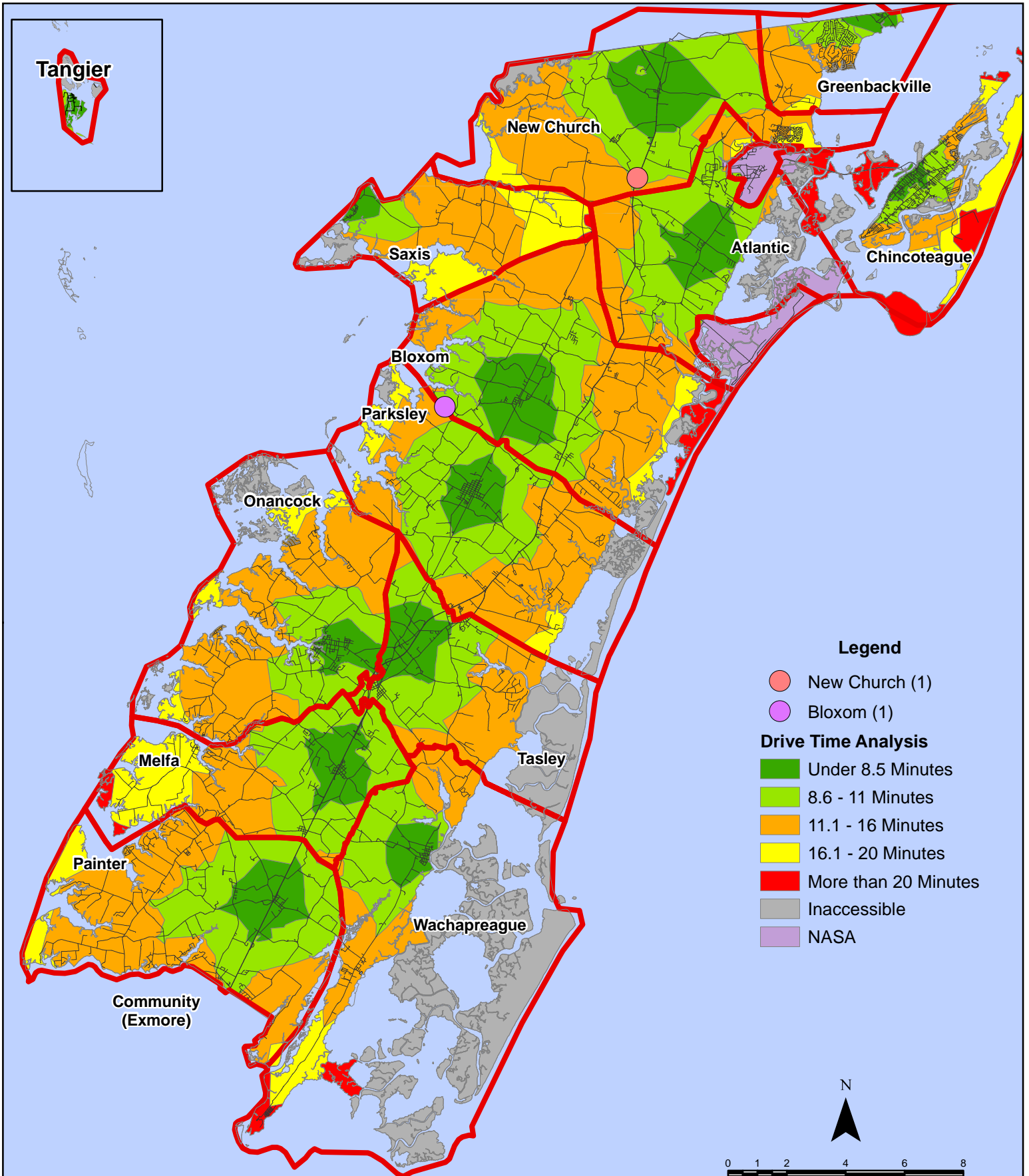
Map Prepared by the Accomack County Department of Building, Planning & Economic Development using data from the ESVA 911 Center. - December 12, 2017

# November 2017 Fire Calls With Response Time Greater Than 20 Mins.



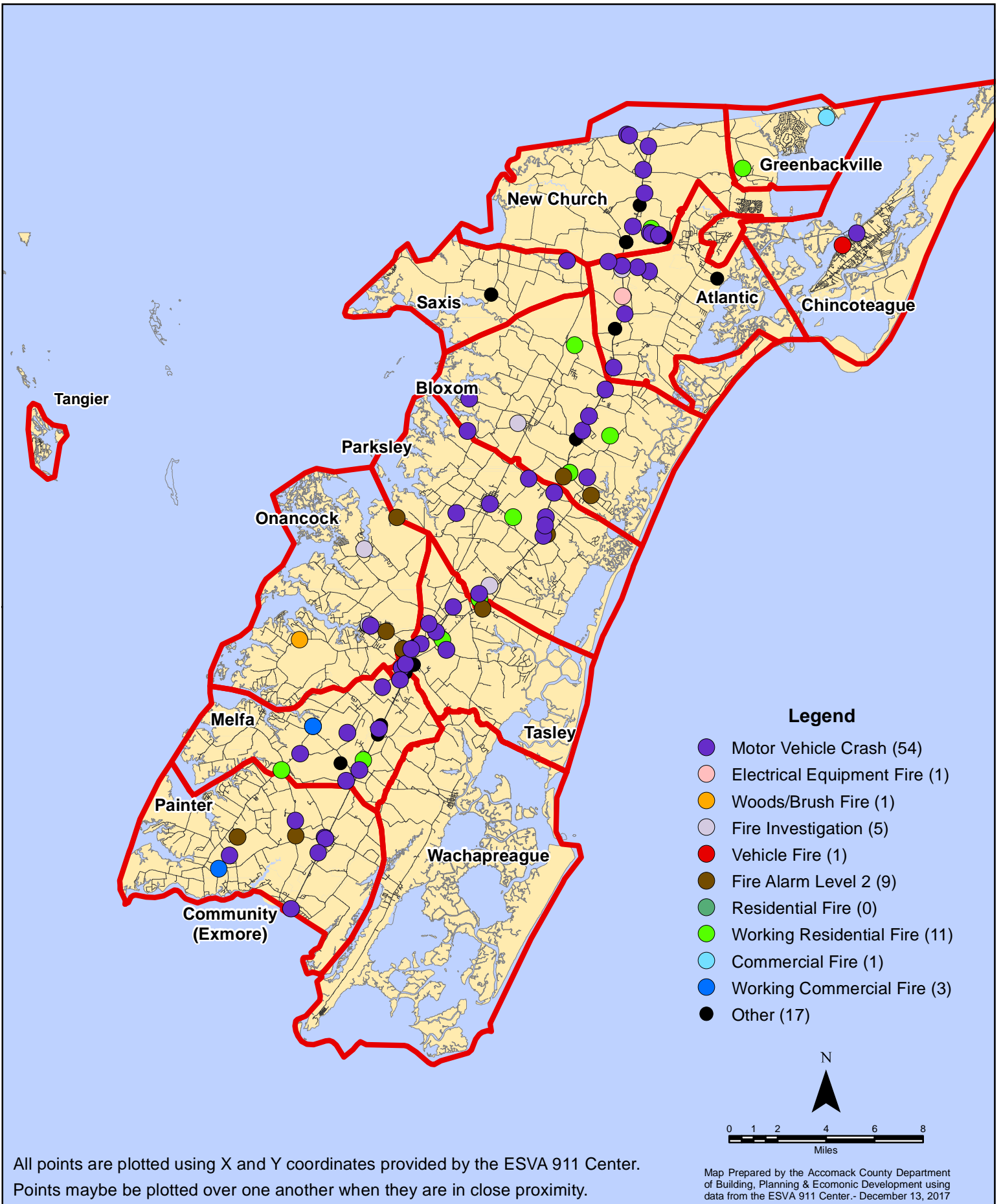
All points are plotted using X and Y coordinates provided by the ESVA 911 Center. Points may be plotted over one another when they are in close proximity.

# November 2017 Fire Calls With Response Time Greater Than 20 Mins.

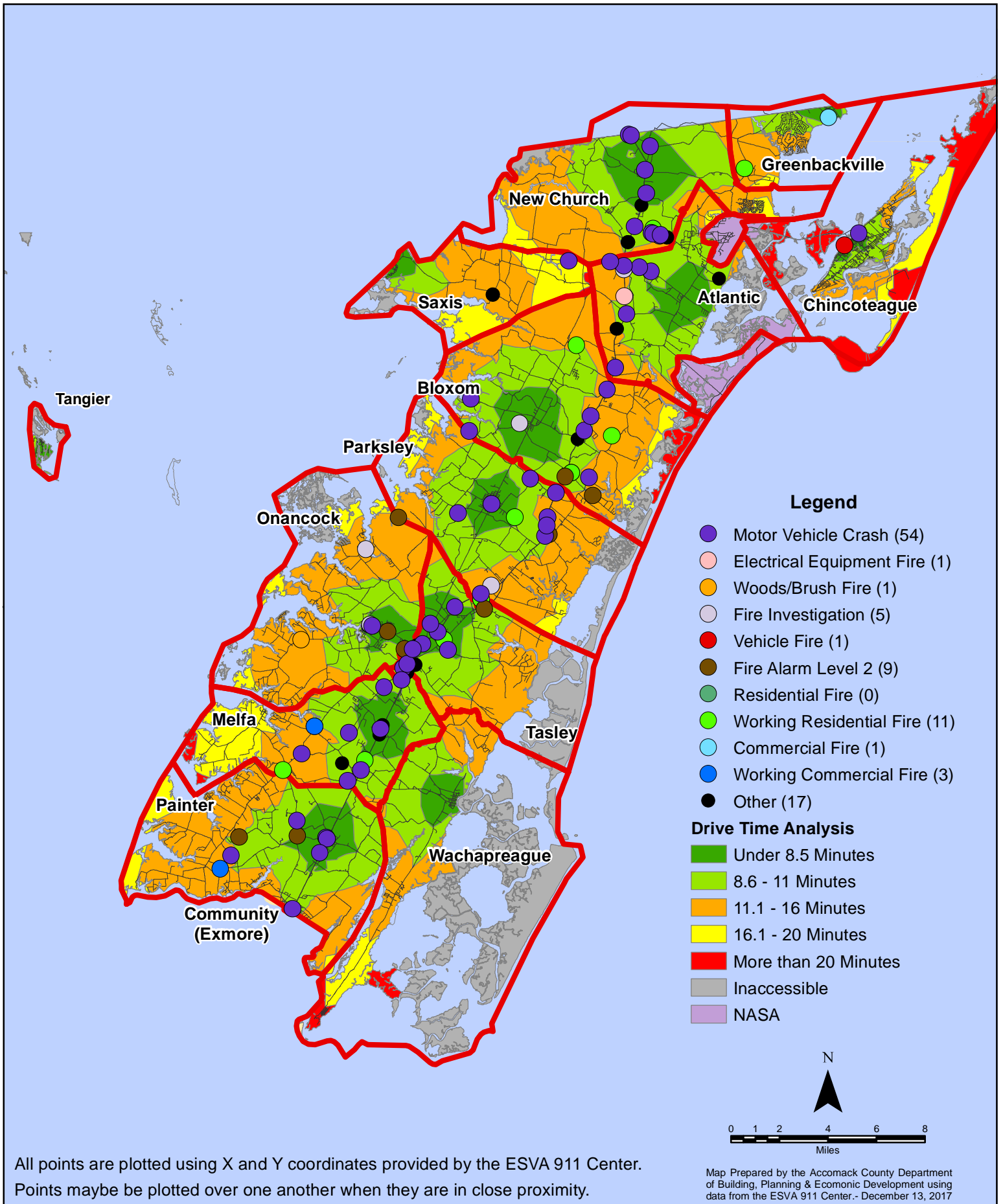


All points are plotted using X and Y coordinates provided by the ESVA 911 Center. Points maybe be plotted over one another when they are in close proximity.

# November 2017 Fire Calls By Type

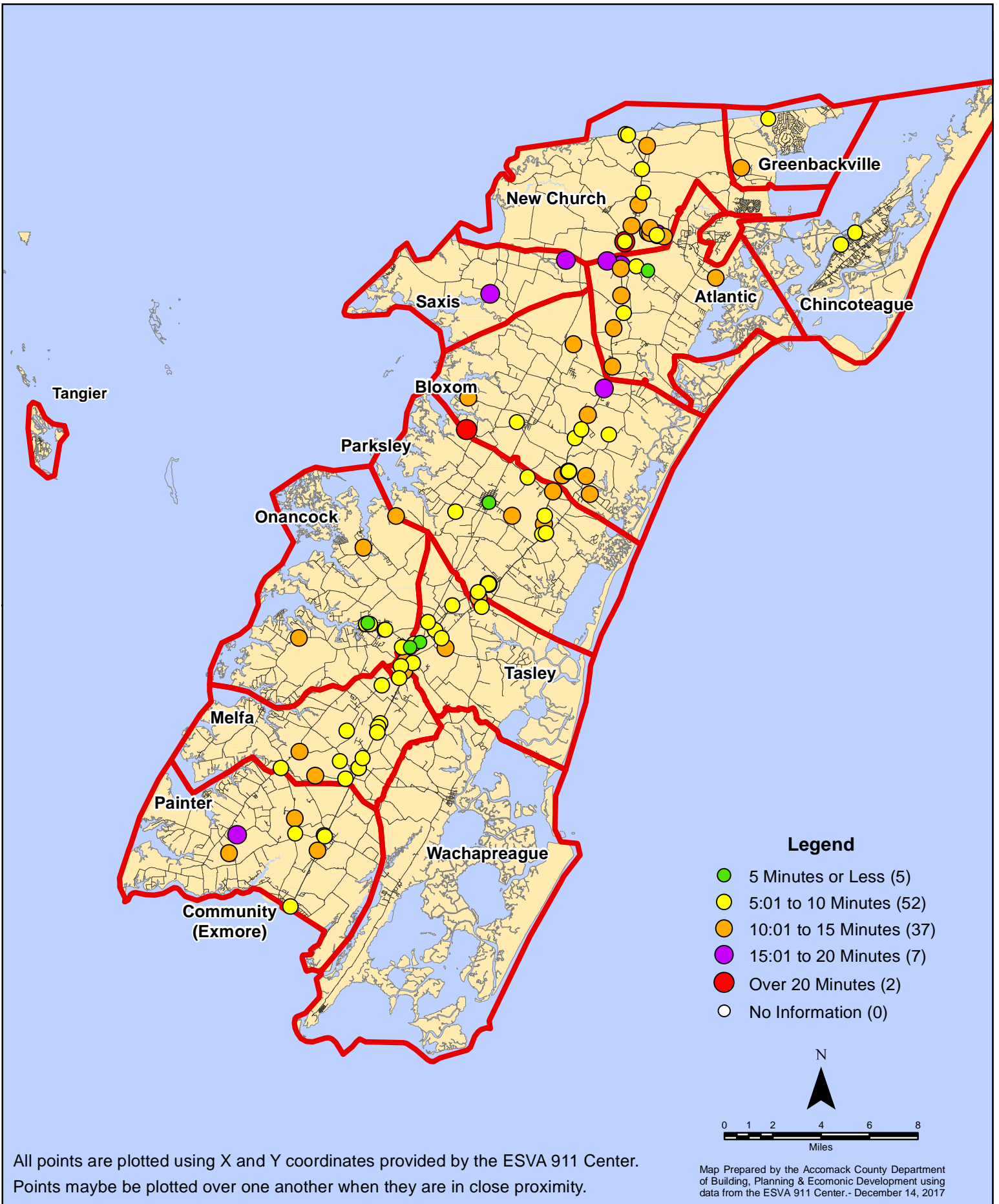


# November 2017 Fire Calls By Type

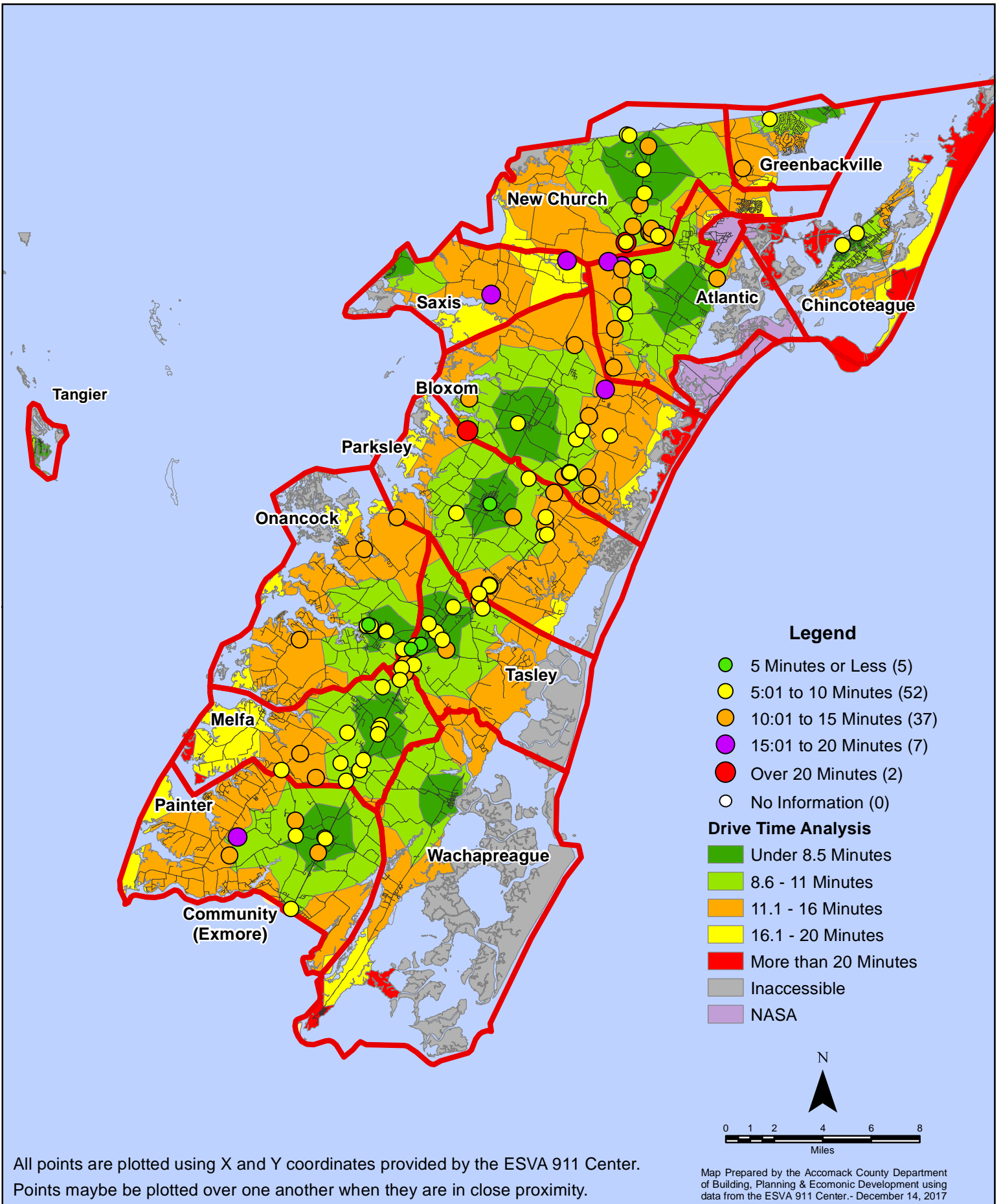


All points are plotted using X and Y coordinates provided by the ESVA 911 Center. Points may be plotted over one another when they are in close proximity.

# November 2017 Fire Calls By Response Time



# November 2017 Fire Calls By Response Time



All points are plotted using X and Y coordinates provided by the ESVA 911 Center. Points may be plotted over one another when they are in close proximity.

Map Prepared by the Accomack County Department of Building, Planning & Economic Development using data from the ESVA 911 Center. - December 14, 2017