

| Fire - Performance Measure Data * |                         |                               |                               |                       |                             |
|-----------------------------------|-------------------------|-------------------------------|-------------------------------|-----------------------|-----------------------------|
| Response District                 | Total Calls in District | Greater than 20 min. Response | Calls Handled by other agency | Longest Response Time | Overall Station Benchmark % |
| New Church                        | 6                       | 1                             | 0                             | 23:15                 | 83.3%                       |
| Greenbackville                    | 2                       | 0                             | 0                             | 15:53                 | 100.0%                      |
| Chincoteague                      | 6                       | 1                             | 3                             | 25:16                 | 83.3%                       |
| Atlantic                          | 5                       | 0                             | 1                             | 11:56                 | 100.0%                      |
| Saxis                             | 2                       | 0                             | 0                             | 11:16                 | N/A                         |
| Bloxom                            | 6                       | 0                             | 0                             | 13:00                 | 100.0%                      |
| Parksley                          | 11                      | 0                             | 2                             | 15:10                 | 100.0%                      |
| Tasley                            | 3                       | 0                             | 0                             | 8:26                  | 100.0%                      |
| Onancock                          | 4                       | 0                             | 0                             | 14:48                 | 100.0%                      |
| Melfa                             | 11                      | 0                             | 1                             | 16:12                 | 100.0%                      |
| Wachapreague                      | 1                       | 0                             | 0                             | 5:09                  | 100.0%                      |
| Painter                           | 14                      | 0                             | 2                             | 15:27                 | 100.0%                      |
| Onley                             | 5                       | 0                             | 0                             | 19:18                 | 100.0%                      |
| Tangier                           | 0                       | 0                             | 0                             | N/A                   | N/A                         |
| <b>System Totals</b>              | <b>76</b>               | <b>2</b>                      | <b>9</b>                      | <b>25:16</b>          | <b>97.4%</b>                |

| EMS - Performance Measure Data |                         |                                    |                       |                               |                                |                               |
|--------------------------------|-------------------------|------------------------------------|-----------------------|-------------------------------|--------------------------------|-------------------------------|
| Response District              | Total Calls in District | Greater than 20 min. Response Time | Longest Response Time | Calls Handled by other agency | Station Benchmark Compliance % | Overall Station Reliability % |
| Greenbackville                 | 7                       | 2                                  | 21:42                 | 4                             | 71.43%                         | 42.9%                         |
| Chincoteague                   | 56                      | 1                                  | 21:29                 | 9                             | 98.21%                         | 83.9%                         |
| Saxis                          | 15                      | 0                                  | 17:33                 | 8                             | 100.00%                        | 46.7%                         |
| Bloxom                         | 50                      | 1                                  | 22:37                 | 5                             | 98.00%                         | 90.0%                         |
| Parksley                       | 87                      | 0                                  | 17:39                 | 8                             | 100.00%                        | 90.8%                         |
| Onancock                       | 52                      | 1                                  | 21:15                 | 3                             | 98.08%                         | 94.2%                         |
| Melfa                          | 64                      | 4                                  | 27:18                 | 6                             | 93.75%                         | 90.6%                         |
| Wachapreague                   | 8                       | 1                                  | 57:40                 | 6                             | 87.50%                         | 25.0%                         |
| Onley                          | 40                      | 0                                  | 14:44                 | 6                             | 100.00%                        | 85.0%                         |
| Oak Hall                       | 65                      | 2                                  | 24:06                 | 5                             | 96.92%                         | 92.3%                         |
| Tangier                        | 9                       | 0                                  | 10:03                 | 0                             | 100.00%                        | N/A                           |
| Community (Exmore)             | 24                      | 2                                  | 20:43                 | 4                             | 91.67%                         | 83.3%                         |
| <b>System Totals</b>           | <b>477</b>              | <b>14</b>                          | <b>57:40</b>          | <b>64</b>                     | <b>97.06%</b>                  | <b>86.6%</b>                  |

## April 2016

### EMS Mutual Aid Data

| Station : Giving Aid | Station Receiving Aid |              |          |          |          |          |              |          |          |                    |          |           |           |          |
|----------------------|-----------------------|--------------|----------|----------|----------|----------|--------------|----------|----------|--------------------|----------|-----------|-----------|----------|
|                      | Greenbackville        | Chincoteague | Saxis    | Bloxom   | Parksley | Onancock | Wachapreague | Onley    | Oak Hall | Community (Exmore) | NORS     | 2nd Call  | 3rd Call  |          |
| Greenbackville       |                       |              |          |          |          |          |              |          |          |                    | 1        | 3         | 0         | 0        |
| Chincoteague         | 1                     |              |          |          |          |          |              |          |          |                    |          | 2         | 6         | 1        |
| Saxis                |                       |              |          |          |          |          |              |          |          |                    |          | 8         | 0         | 0        |
| Bloxom               |                       | 2            | 2        | 5        |          |          |              |          |          |                    |          | 0         | 5         | 0        |
| Parksley             |                       |              | 1        |          |          |          |              | 1        |          |                    |          | 2         | 5         | 1        |
| Onancock             |                       |              |          |          |          | 1        |              | 3        |          |                    |          | 1         | 2         | 0        |
| Melfa                |                       |              |          |          | 1        |          | 6            | 2        |          | 4                  |          | 1         | 5         | 0        |
| Wachapreague         |                       |              |          |          |          | 1        |              |          |          |                    |          | 6         | 0         | 0        |
| Onley                |                       |              |          | 3        | 2        | 3        |              |          |          |                    |          | 3         | 2         | 0        |
| Oak Hall             | 3                     | 6            | 6        | 4        |          |          |              |          |          |                    |          | 0         | 5         | 0        |
| Community (Exmore)   |                       |              |          |          |          | 1        |              |          |          |                    |          | 3         | 1         | 0        |
| Northampton Co.      |                       |              |          |          |          |          |              |          |          |                    |          |           |           |          |
| Wallops              |                       | 1            |          |          |          |          |              |          |          |                    |          |           |           |          |
| <b>Total</b>         | <b>4</b>              | <b>9</b>     | <b>8</b> | <b>5</b> | <b>8</b> | <b>3</b> | <b>6</b>     | <b>6</b> | <b>6</b> | <b>5</b>           | <b>4</b> | <b>29</b> | <b>31</b> | <b>2</b> |

### Over 20 minute response detail

| Date and Alarm Time | Dist.  | Response Time | Explanation                |
|---------------------|--------|---------------|----------------------------|
| 4/29/16 13:24       | ST. 20 | 0:24:06       | staging                    |
| 4/26/16 14:14       | ST. 2  | 0:20:46       | 2nd call - ST. 3 handled   |
| 4/26/16 3:16        | ST. 13 | 0:20:18       | drive time ?               |
| 4/23/16 15:13       | ST. 10 | 0:20:28       | drive time ?               |
| 4/20/16 10:57       | ST. 11 | 0:57:40       | woods fire / amb req.      |
| 4/13/16 17:26       | ST. 13 | 0:20:43       | drive time ?               |
| 4/12/16 18:34       | ST. 20 | 0:21:34       | slow response              |
| 4/11/16 23:46       | ST. 10 | 0:23:35       | drive time ?               |
| 4/11/16 0:43        | ST. 6  | 0:22:37       | staging                    |
| 4/10/16 13:30       | ST. 9  | 0:21:15       | 2nd call - ST. 18 handled  |
| 4/10/2016 12:28     | ST. 3  | 0:21:29       | Bloxom handled             |
| 4/10/2016 5:47      | ST. 10 | 0:27:18       | call unfounded             |
| 4/9/2016 4:45       | ST. 2  | 0:21:42       | drive time - ST. 20 handle |
| 4/1/2016 3:21       | ST. 10 | 0:22:06       | staging                    |

**Benchmark** = The Accomack County Board of Supervisors established 20 minute standard for emergency response.

\* This data excludes F1 Med (Medical Assist) calls in Fire Data

**NORS** = No Response by station or the call was handled by another station or agency.

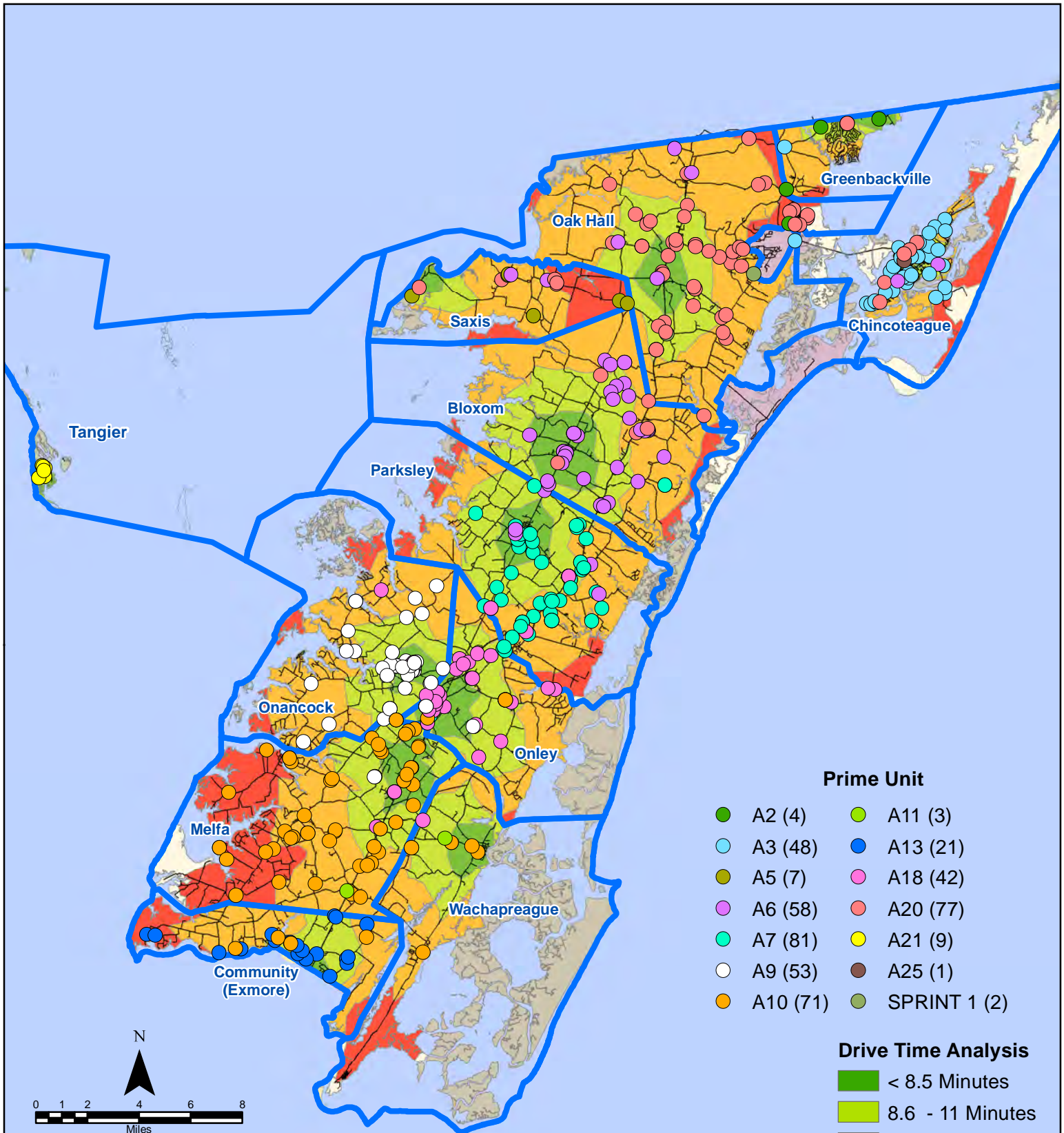
**2nd Call** = 2nd Ambulance call received while first ambulance was on another call.

**3rd Call** = 3rd Ambulance call received while First & Second Ambulances were on other calls.

*This information was prepared using data supplied by the Eastern Shore of Virginia 911 Center.*

*This information is original incident data only and may not be representative of all units or stations who responded to an incident.*

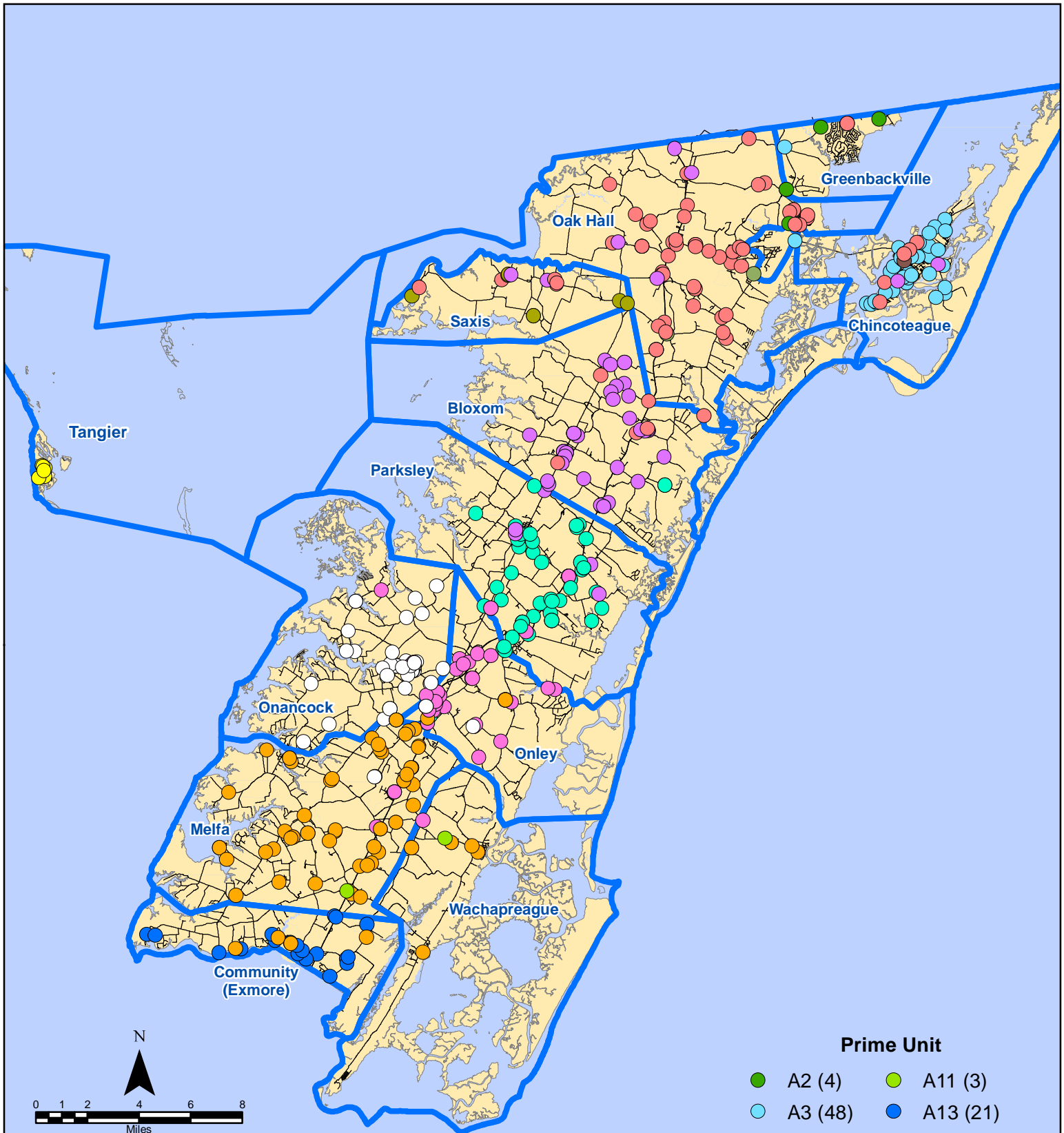
# April 2016 EMS Calls By Prime Unit



Map Prepared by the Accomack County Department of Planning & Community Development using data from the ESVA 911 Center. - May 18, 2016

All points are plotted using X and Y coordinates provided by the ESVA 911 Center. Points may be plotted over one another when they are in close proximity.

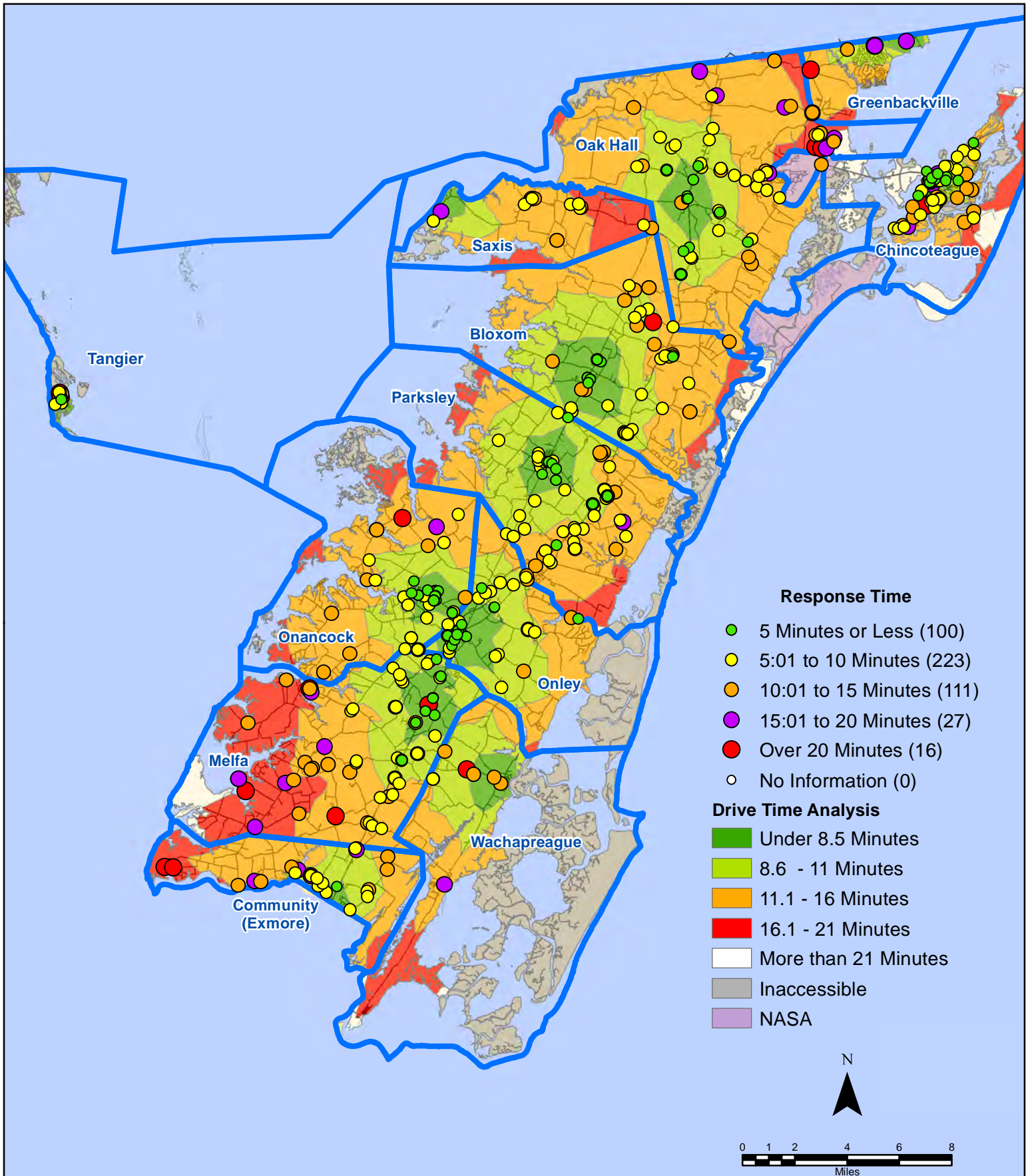
# April 2016 EMS Calls By Prime Unit



Map Prepared by the Accomack County Department of Planning & Community Development using data from the ESVA 911 Center. - May 18, 2016

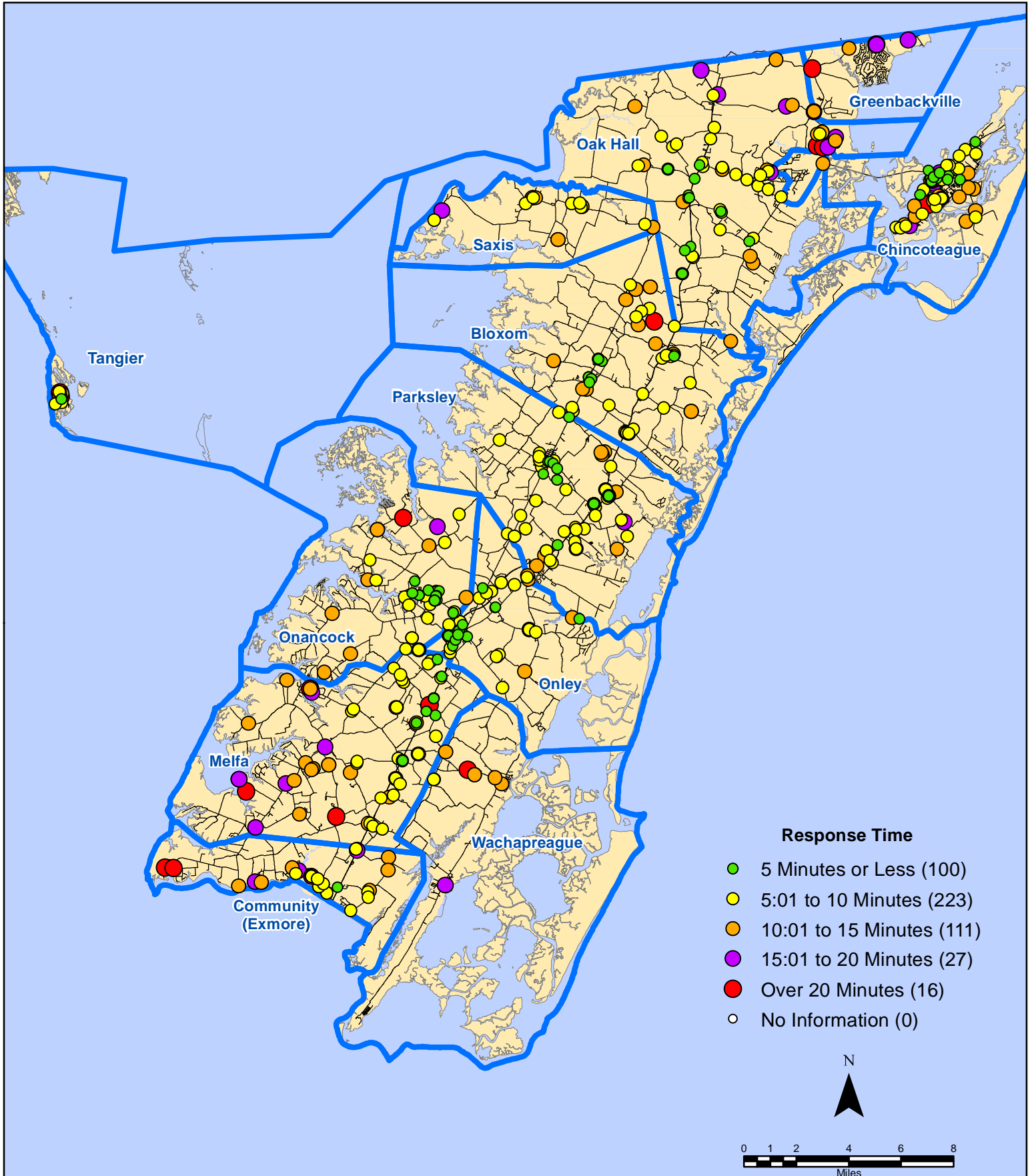
All points are plotted using X and Y coordinates provided by the ESVA 911 Center. Points may be plotted over one another when they are in close proximity.

# April 2016 EMS Calls By Response Time



All points are plotted using X and Y coordinates provided by the ESVA 911 Center. Points may be plotted over one another when they are in close proximity.

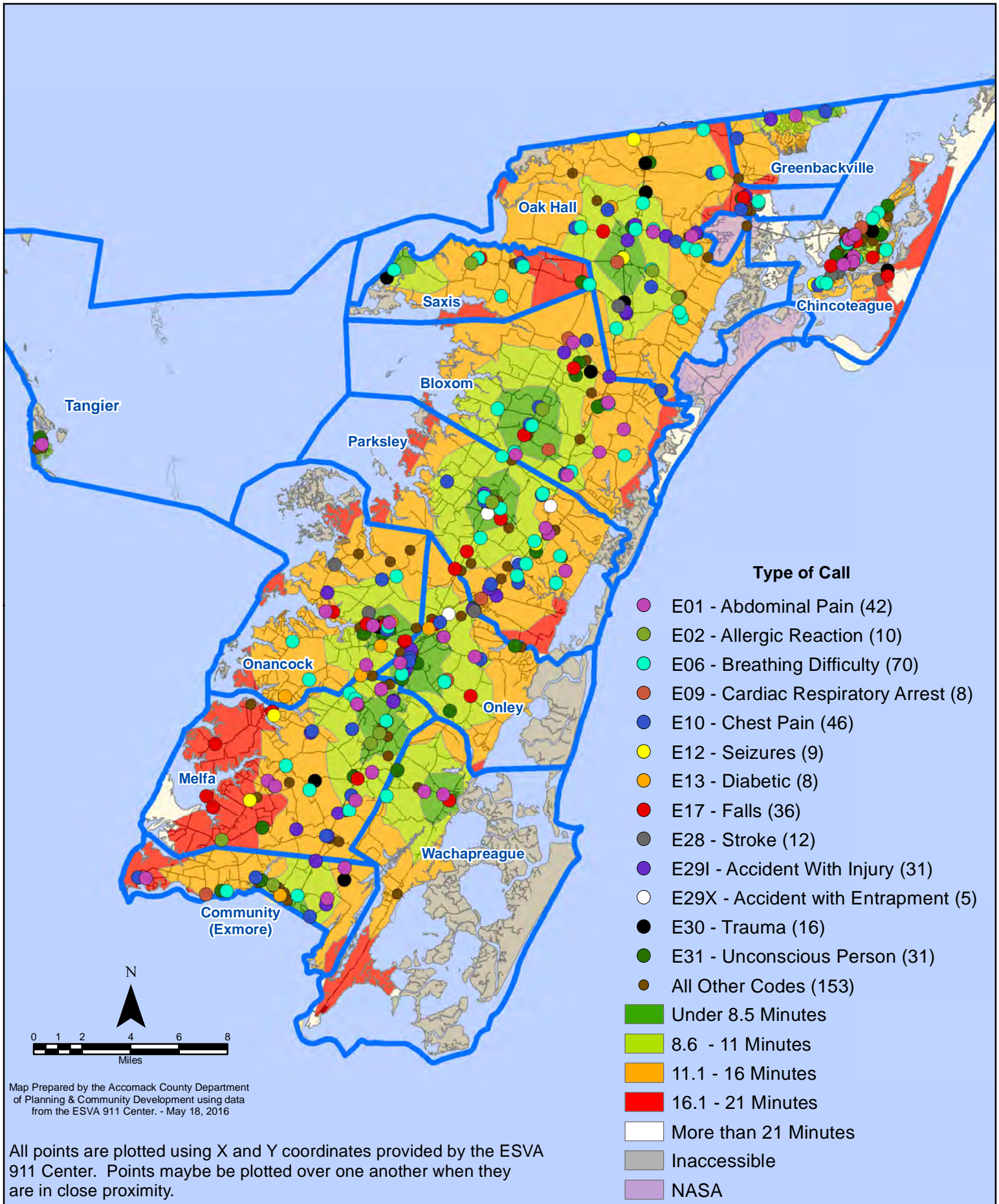
# April 2016 EMS Calls By Response Time



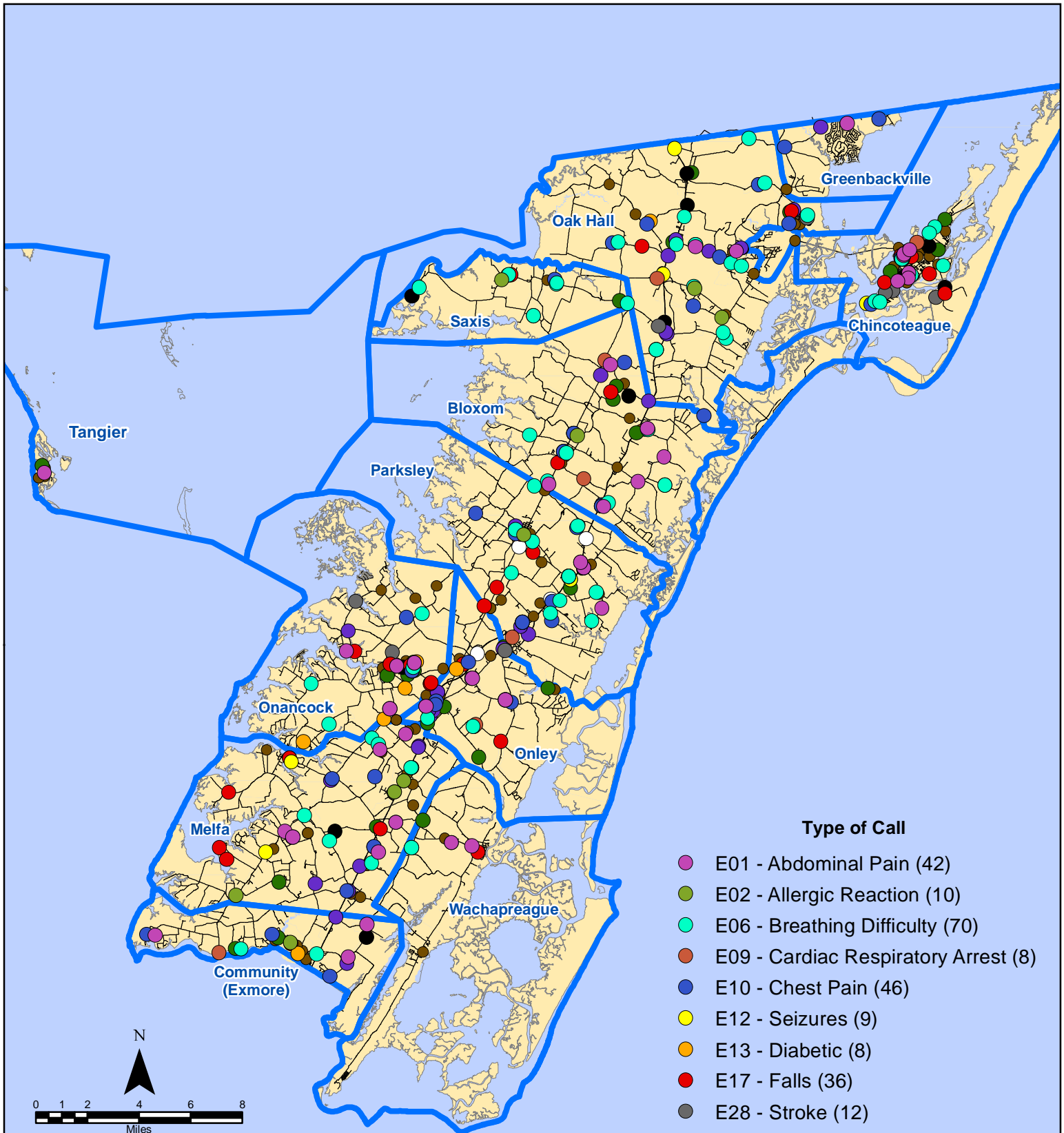
All points are plotted using X and Y coordinates provided by the ESVA 911 Center. Points may be plotted over one another when they are in close proximity.

Map Prepared by the Accomack County Department of Planning & Community Development using data from the ESVA 911 Center. - April 18, 2016

# April 2016 EMS Calls By Type



# April 2016 EMS Calls By Type



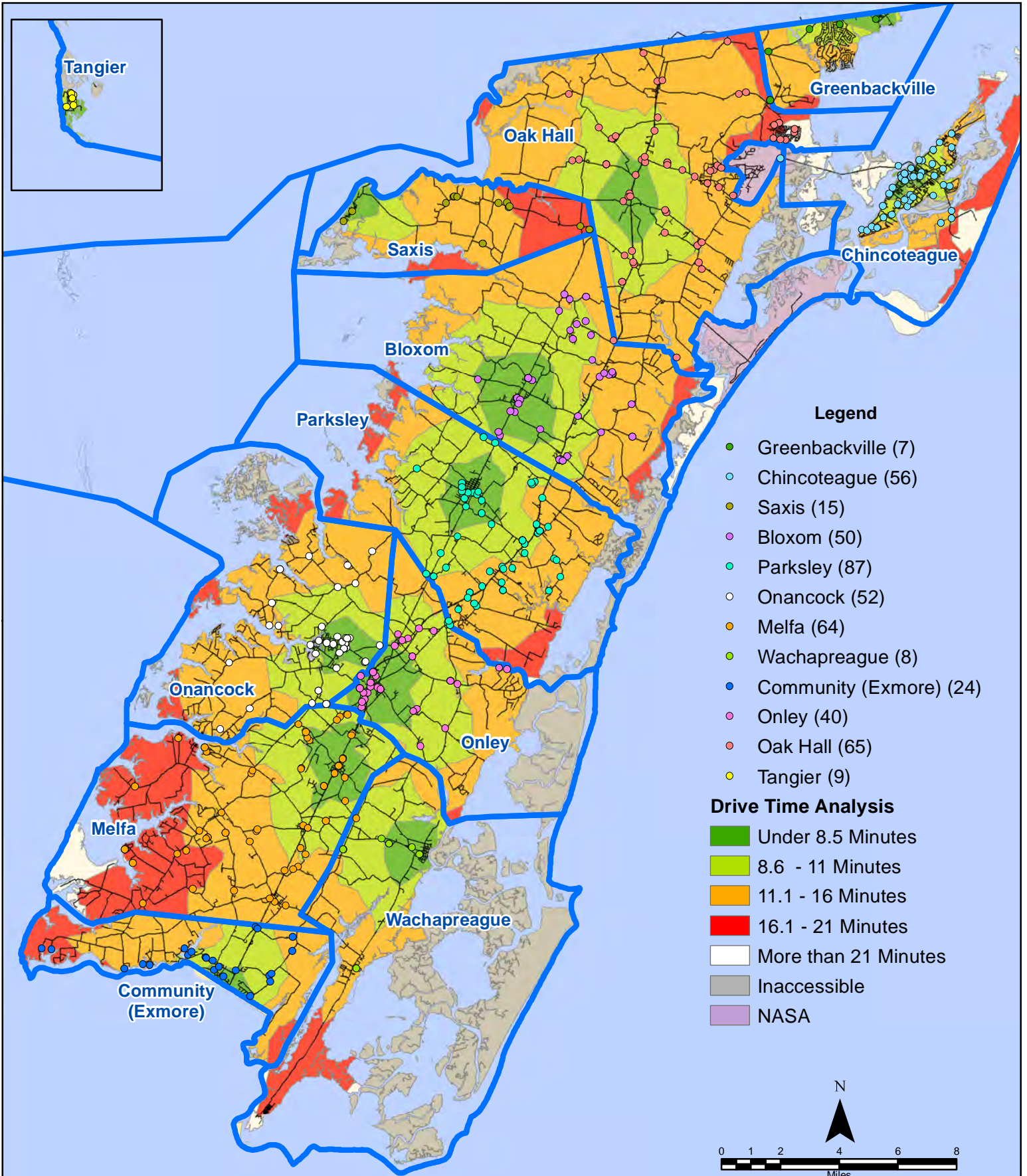
## Type of Call

- E01 - Abdominal Pain (42)
- E02 - Allergic Reaction (10)
- E06 - Breathing Difficulty (70)
- E09 - Cardiac Respiratory Arrest (8)
- E10 - Chest Pain (46)
- E12 - Seizures (9)
- E13 - Diabetic (8)
- E17 - Falls (36)
- E28 - Stroke (12)
- E29I - Accident With Injury (31)
- E29X - Accident with Entrapment (5)
- E30 - Trauma (16)
- E31 - Unconscious Person (31)
- All Other Codes (153)

Map Prepared by the Accomack County Department of Planning & Community Development using data from the ESVA 911 Center. - May 18, 2016

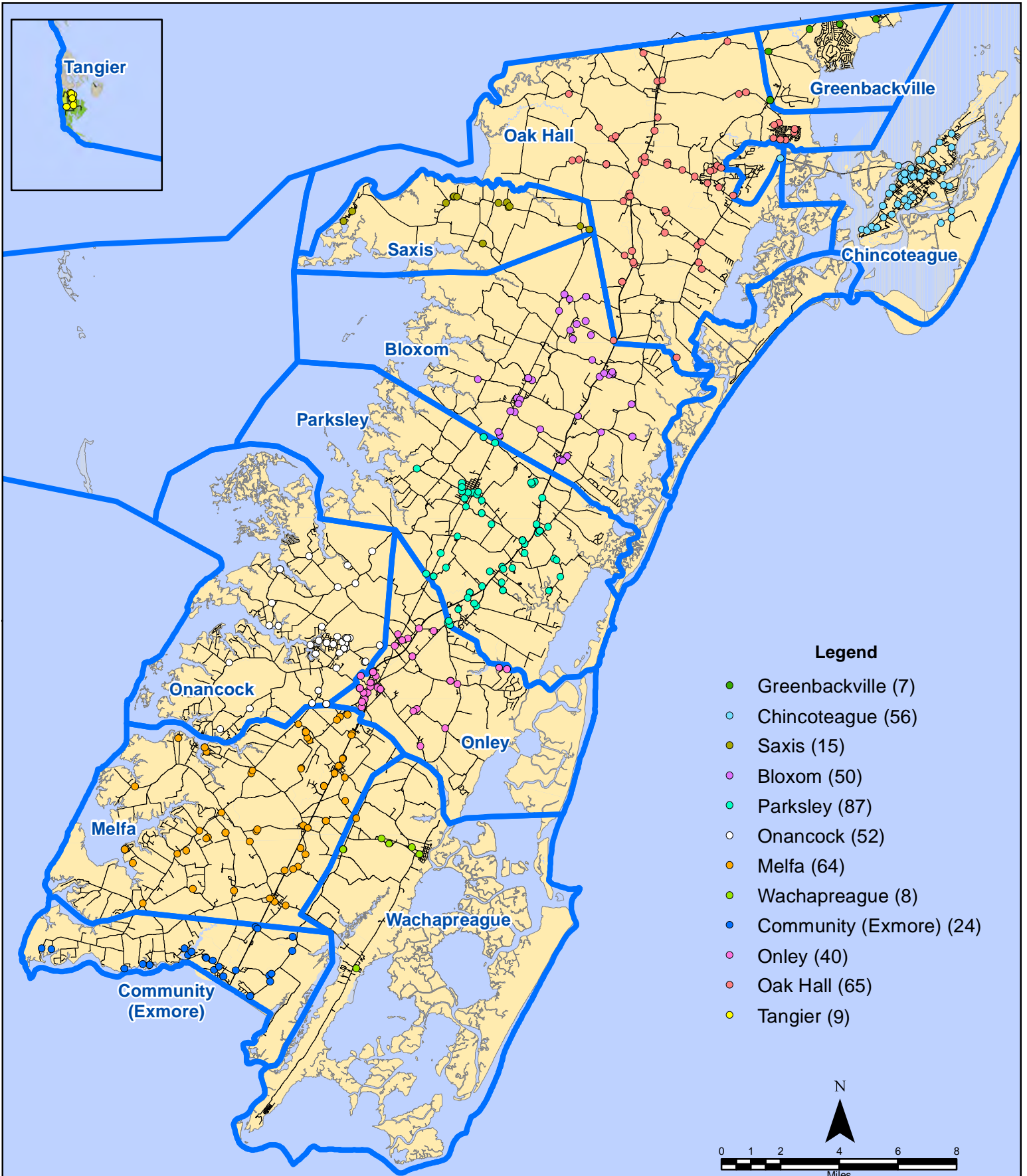
All points are plotted using X and Y coordinates provided by the ESVA 911 Center. Points may be plotted over one another when they are in close proximity.

# April 2016 EMS Calls By District



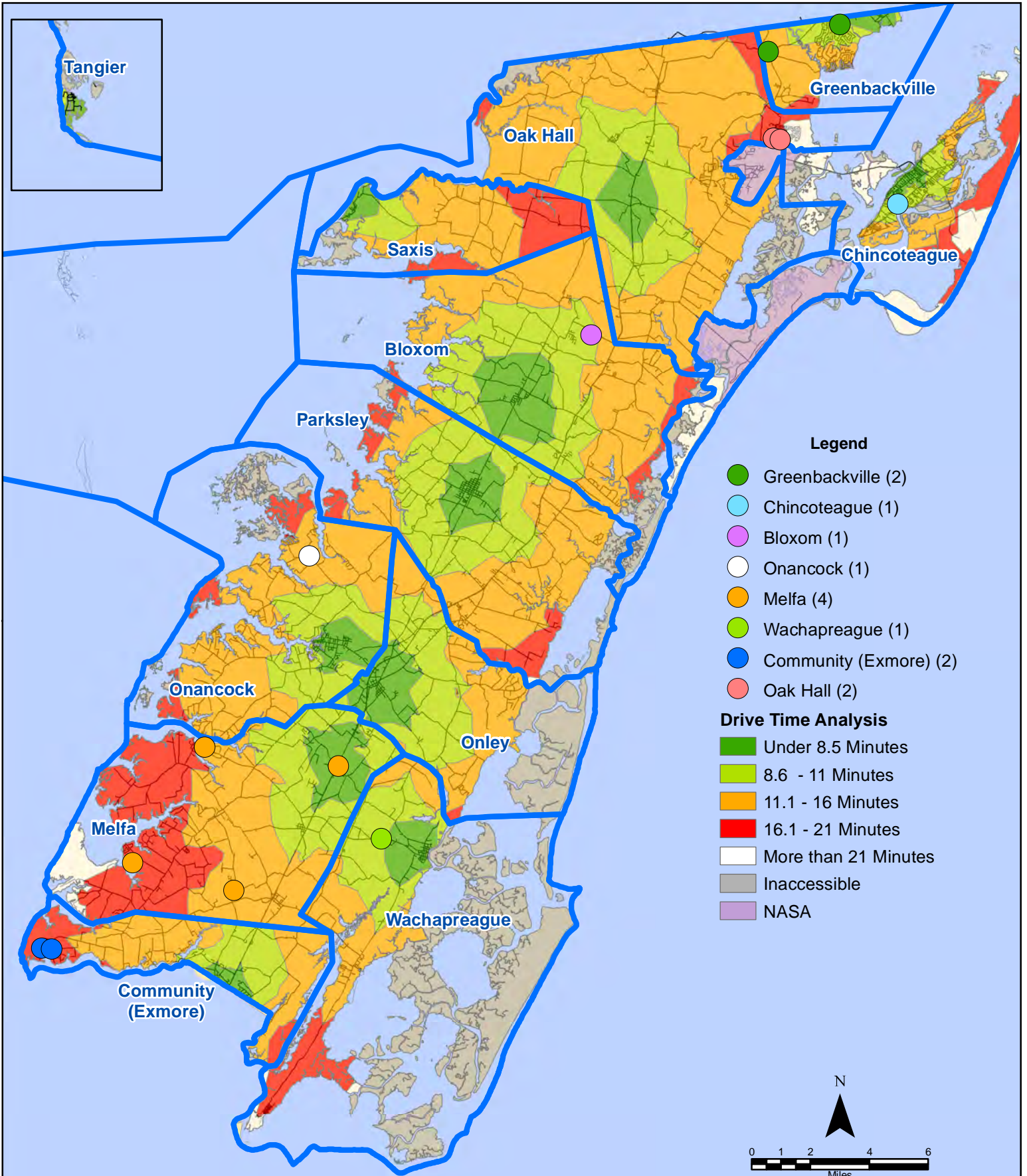
All points are plotted using X and Y coordinates provided by the ESVA 911 Center. Points may be plotted over one another when they are in close proximity.

# April 2016 EMS Calls By District



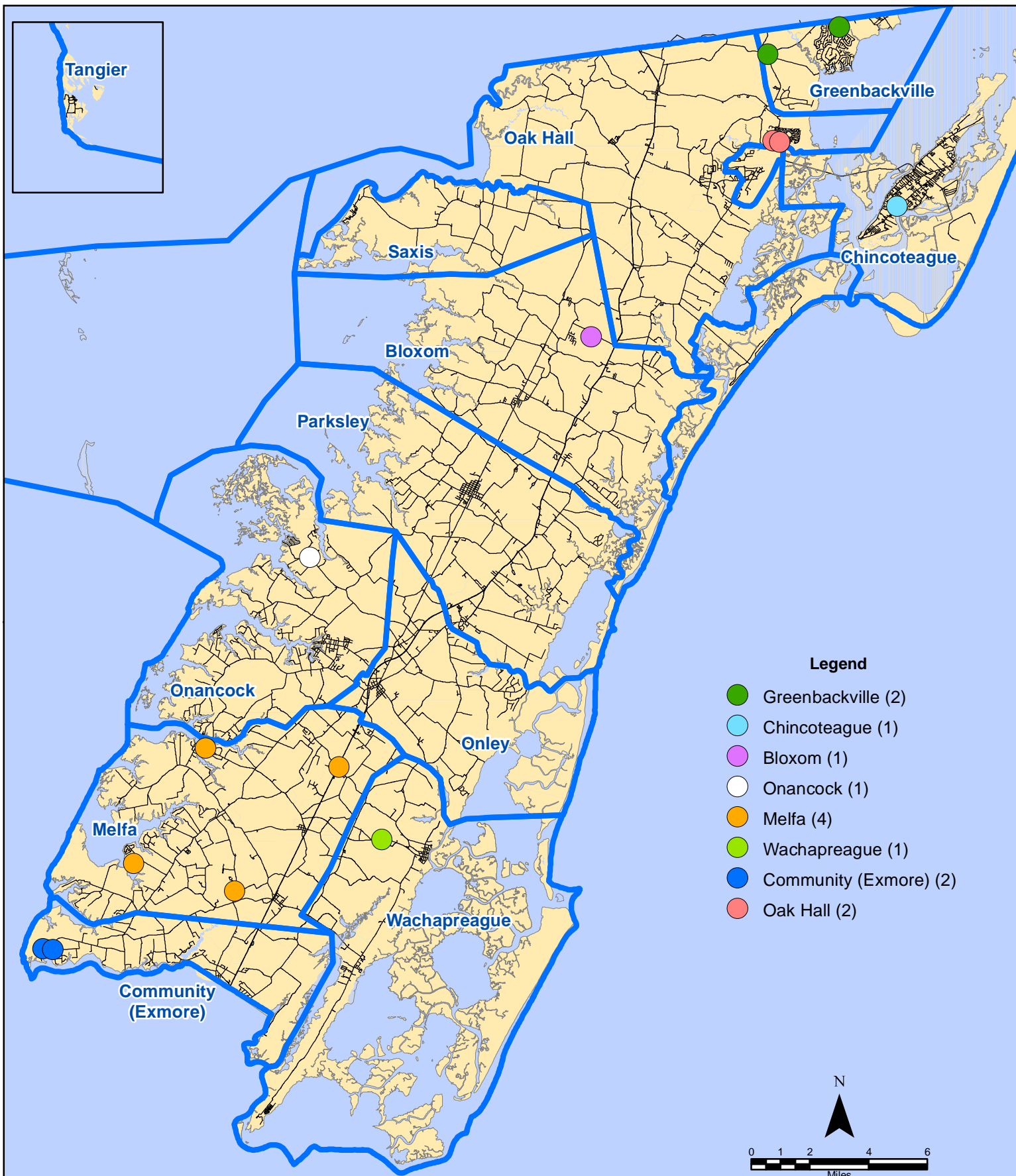
All points are plotted using X and Y coordinates provided by the ESVA 911 Center.  
Points may be plotted over one another when they are in close proximity.

# April 2016 EMS Calls With Response Time Greater Than 20 Mins.



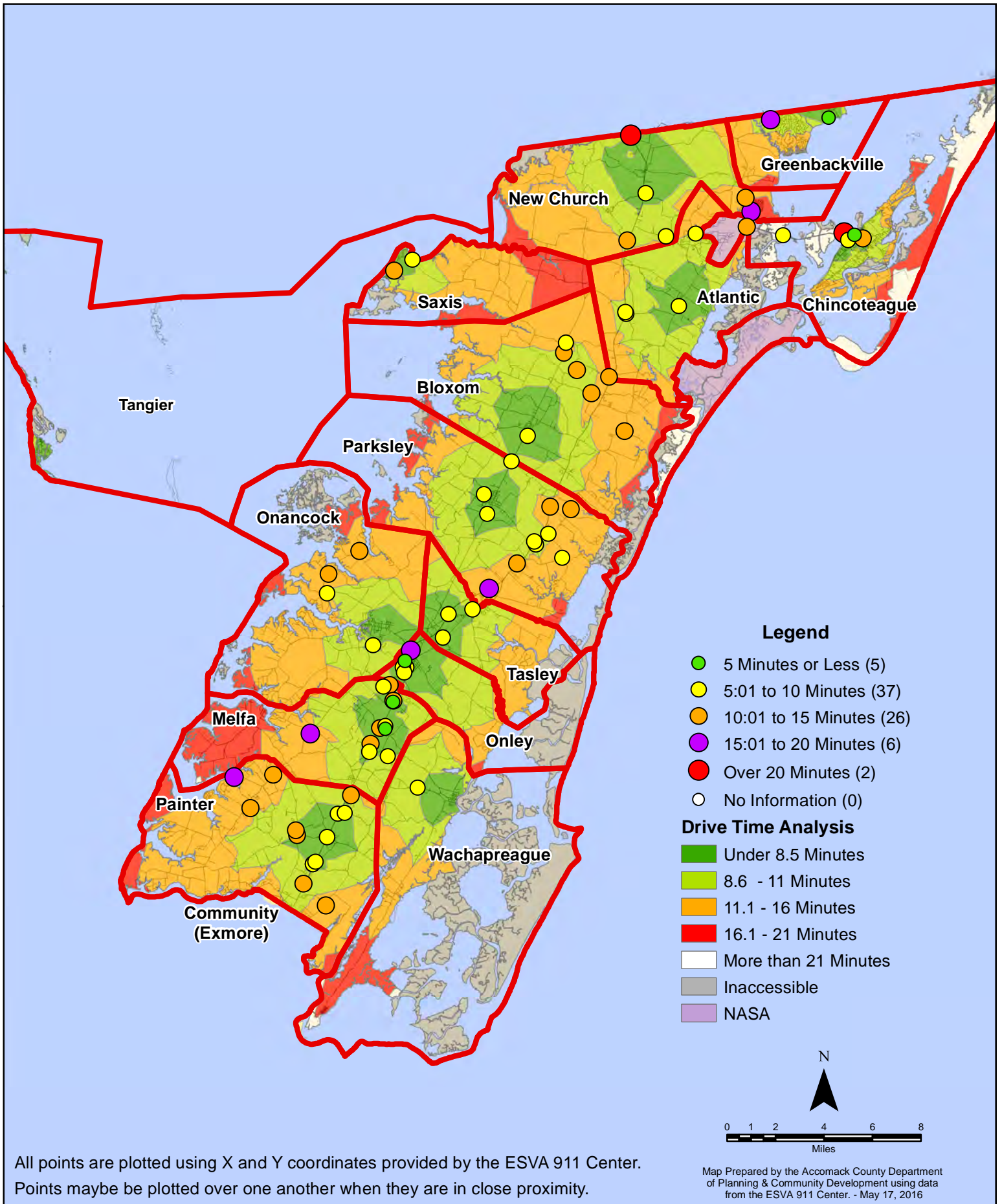
All points are plotted using X and Y coordinates provided by the ESVA 911 Center. Points may be plotted over one another when they are in close proximity.

# April 2016 EMS Calls With Response Time Greater Than 20 Mins.



All points are plotted using X and Y coordinates provided by the ESVA 911 Center. Points may be plotted over one another when they are in close proximity.

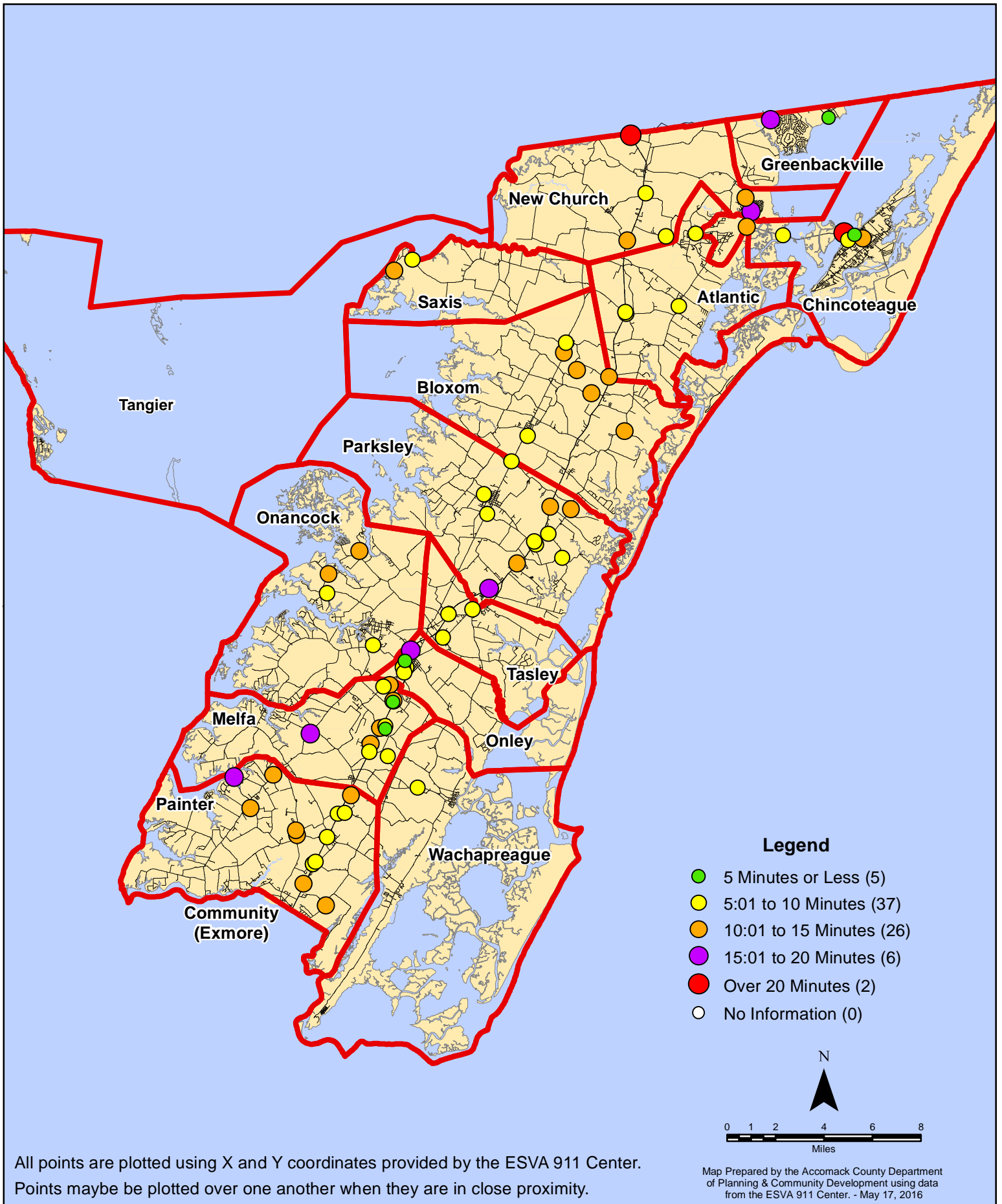
# April 2016 Fire Calls By Response Time



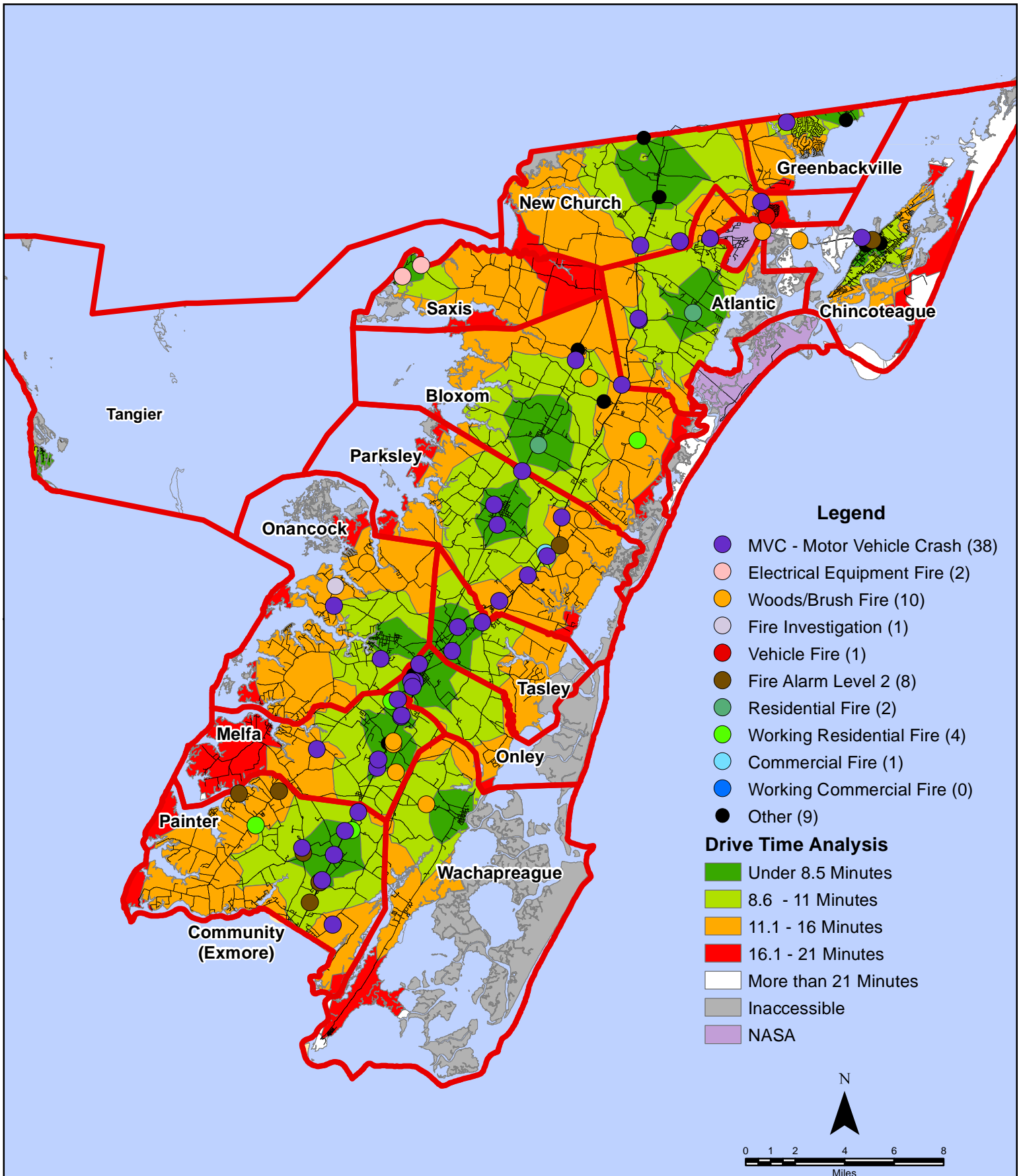
All points are plotted using X and Y coordinates provided by the ESVA 911 Center. Points maybe be plotted over one another when they are in close proximity.

Map Prepared by the Accomack County Department of Planning & Community Development using data from the ESVA 911 Center. - May 17, 2016

# April 2016 Fire Calls By Response Time



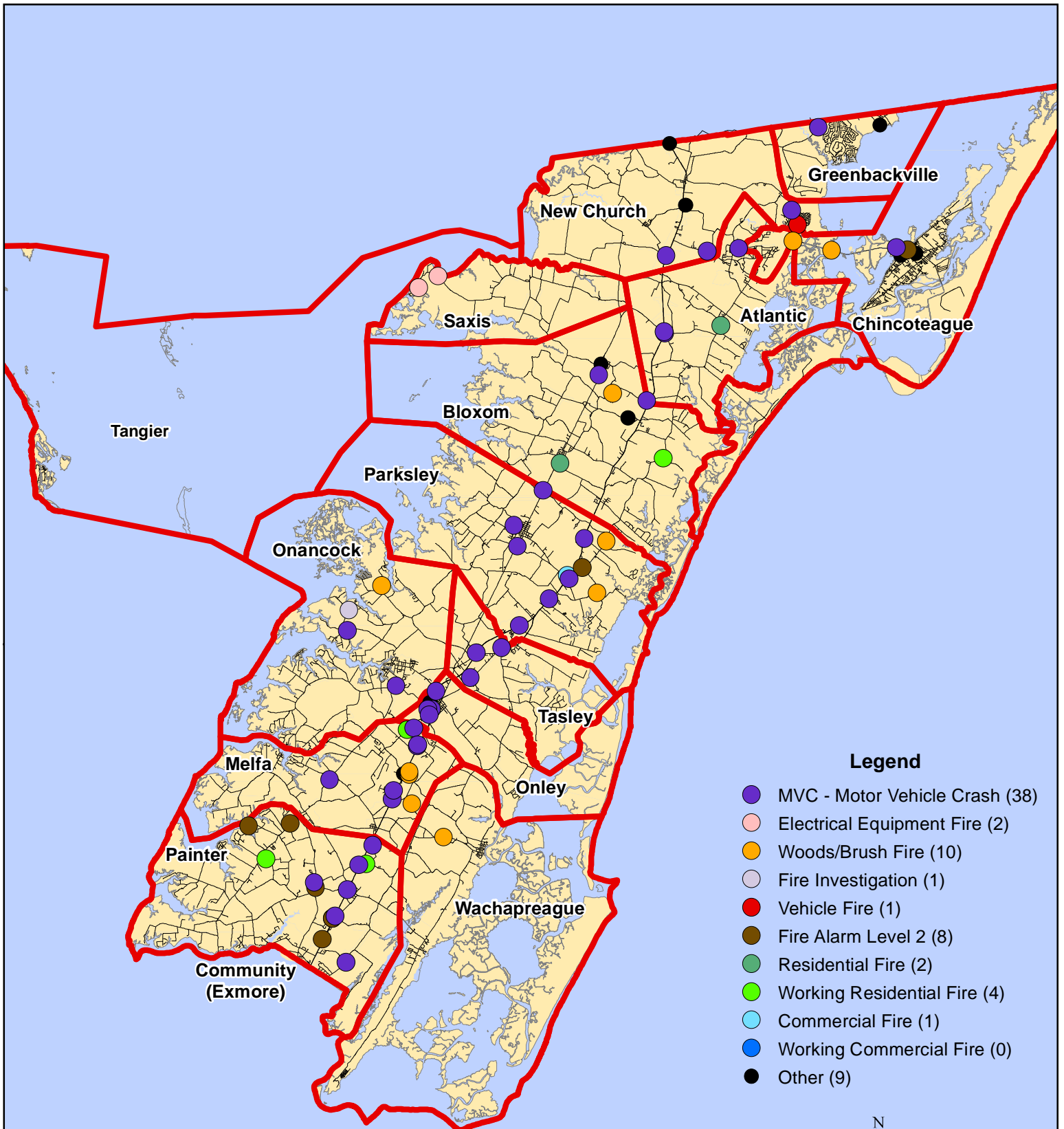
# April 2016 Fire Calls By Type



All points are plotted using X and Y coordinates provided by the ESVA 911 Center. Points may be plotted over one another when they are in close proximity.

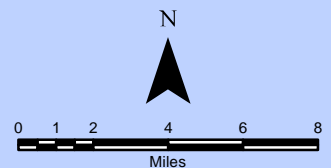
Map Prepared by the Accomack County Department of Planning & Community Development using data from the ESVA 911 Center. - April 17, 2016

# April 2016 Fire Calls By Type



## Legend

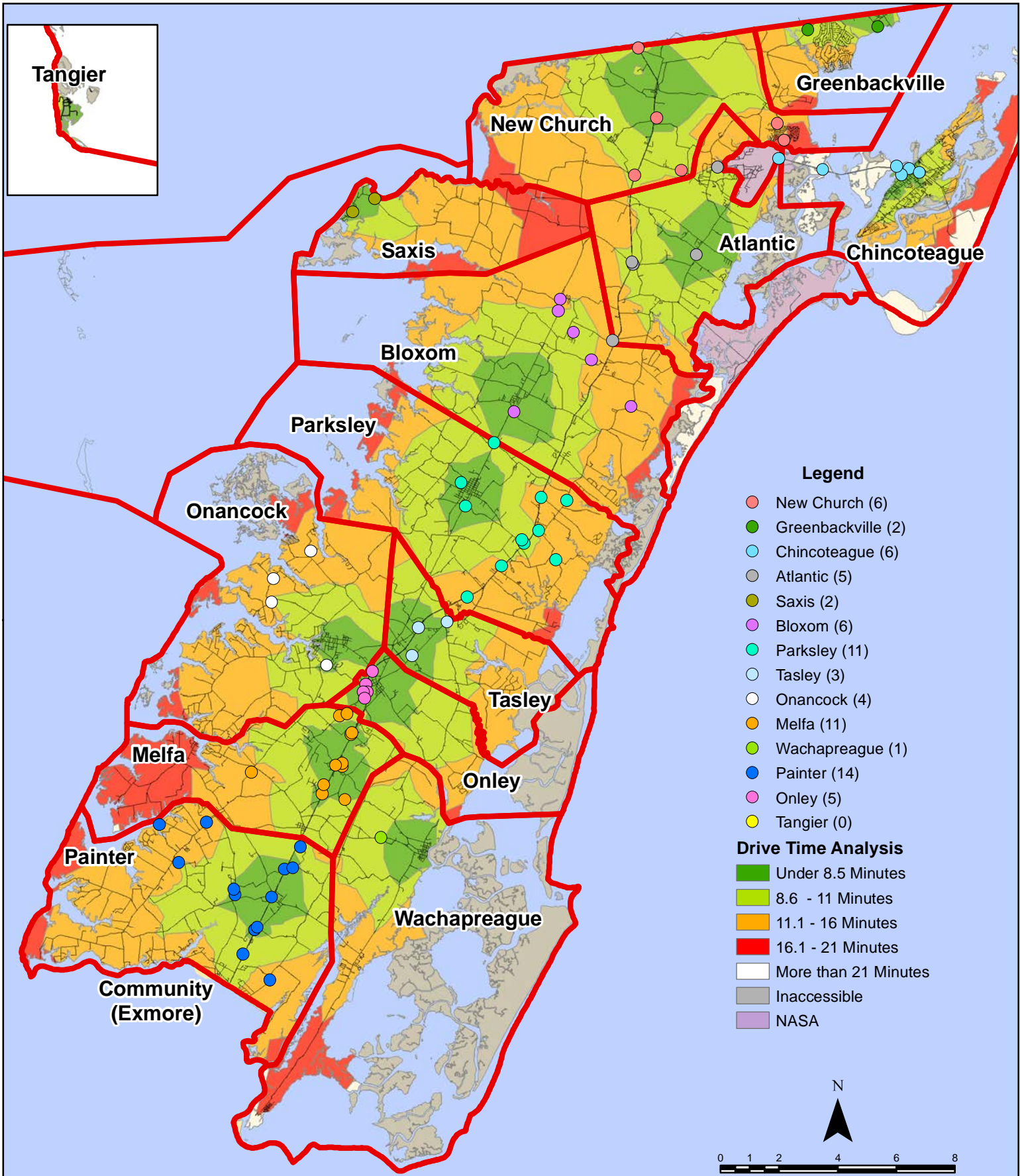
- MVC - Motor Vehicle Crash (38)
- Electrical Equipment Fire (2)
- Woods/Brush Fire (10)
- Fire Investigation (1)
- Vehicle Fire (1)
- Fire Alarm Level 2 (8)
- Residential Fire (2)
- Working Residential Fire (4)
- Commercial Fire (1)
- Working Commercial Fire (0)
- Other (9)



All points are plotted using X and Y coordinates provided by the ESVA 911 Center. Points may be plotted over one another when they are in close proximity.

Map Prepared by the Accomack County Department of Planning & Community Development using data from the ESVA 911 Center. - April 17, 2016

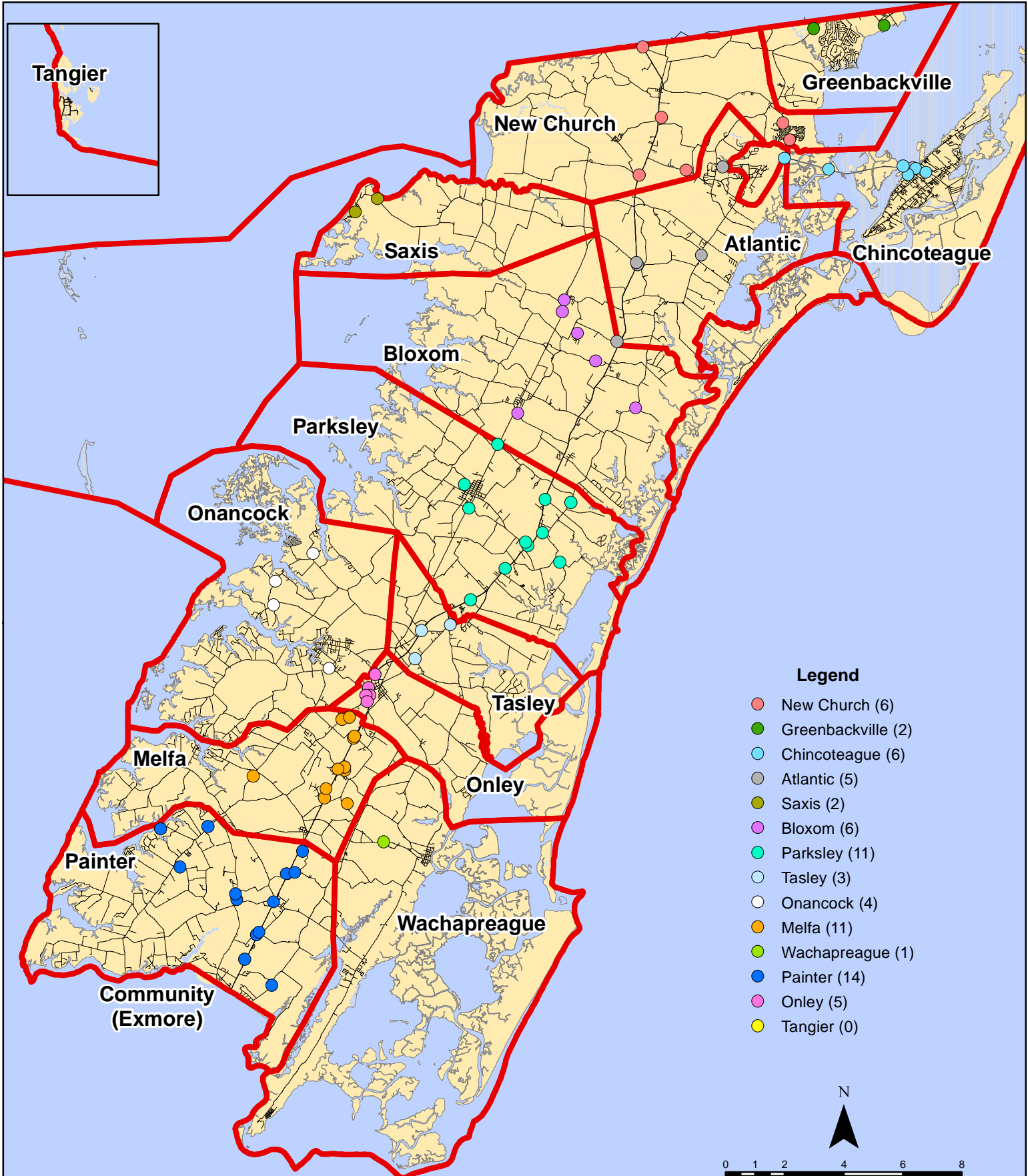
# April 2016 Fire Calls By District



All points are plotted using X and Y coordinates provided by the ESVA 911 Center. Points may be plotted over one another when they are in close proximity.

Map Prepared by the Accomack County Department of Planning & Community Development using data from the ESVA 911 Center. - May 17, 2016

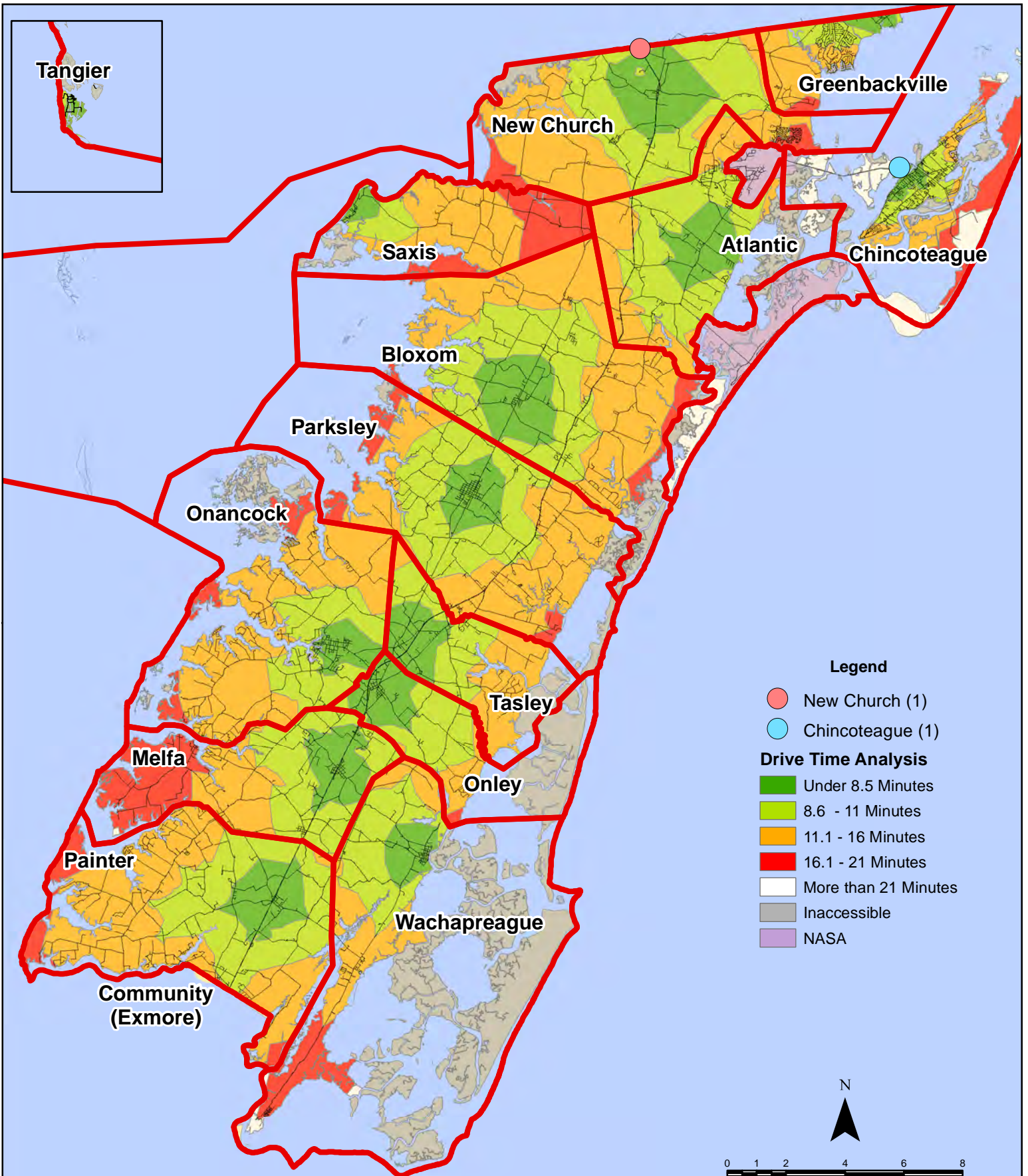
# April 2016 Fire Calls By District



All points are plotted using X and Y coordinates provided by the ESVA 911 Center. Points may be plotted over one another when they are in close proximity.

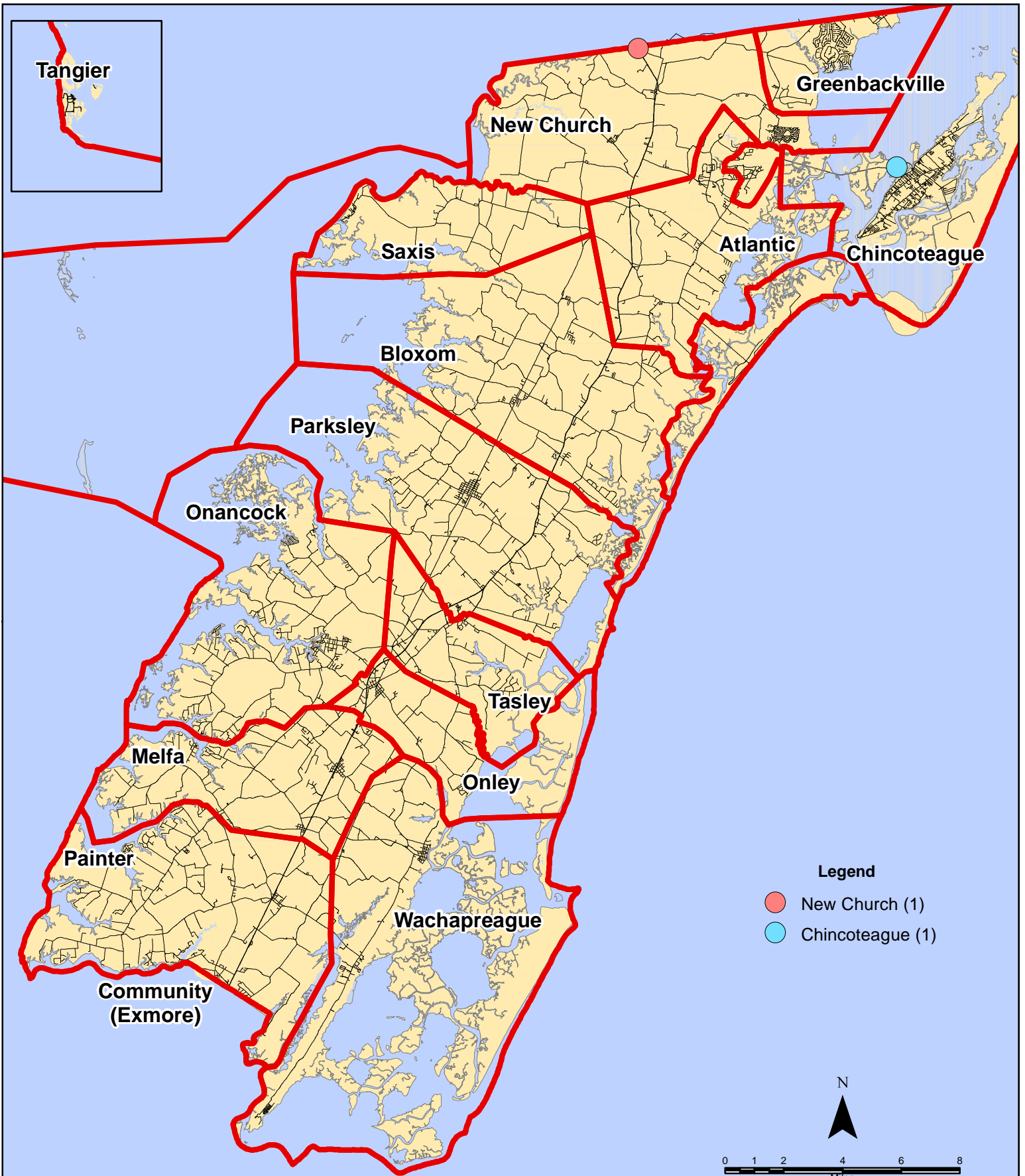
Map Prepared by the Accomack County Department of Planning & Community Development using data from the ESVA 911 Center. - May 17, 2016

# April 2016 Fire Calls With Response Time Greater Than 20 Mins.



All points are plotted using X and Y coordinates provided by the ESVA 911 Center. Points may be plotted over one another when they are in close proximity.

# April 2016 Fire Calls With Response Time Greater Than 20 Mins.



All points are plotted using X and Y coordinates provided by the ESVA 911 Center. Points may be plotted over one another when they are in close proximity.