

Fire - Performance Measure Data *					
Response District	Total Calls in District	Greater than 20 min. Response	Calls Handled by other agency	Longest Response Time	Overall Station Benchmark %
New Church	8	1	0	20:34	87.5%
Greenbackville	1	0	0	10:56	100.0%
Chincoteague	9	0	0	11:51	100.0%
Atlantic	10	0	0	14:45	100.0%
Saxis	1	0	0	18:14	100.0%
Bloxom	4	0	0	11:04	100.0%
Parksley	15	0	0	18:29	100.0%
Tasley	10	0	0	10:59	100.0%
Onancock	8	0	0	12:52	100.0%
Melfa	9	0	0	17:03	100.0%
Wachapreague	3	0	0	12:43	100.0%
Painter	12	0	0	14:16	100.0%
Onley	8	0	0	12:55	100.0%
Tangier	0	0	0	N/A	N/A
System Totals	98	1	0	17:19	99.0%

EMS - Performance Measure Data						
Response District	Total Calls in District	Greater than 20 min. Response Time	Longest Response Time	Calls Handled by other agency	Station Benchmark Compliance %	Overall Station Reliability %
Greenbackville	10	0	19:17	10	100.00%	0.0%
Chincoteague	55	0	16:26	4	100.00%	92.7%
Saxis	13	0	13:23	8	100.00%	38.5%
Bloxom	46	0	13:36	5	100.00%	89.1%
Parksley	91	0	14:31	4	100.00%	95.6%
Onancock	30	0	16:40	1	100.00%	96.7%
Melfa	72	0	16:02	6	100.00%	91.7%
Wachapreague	6	1	20:19	5	83.33%	16.7%
Onley	50	0	15:16	3	100.00%	94.0%
Oak Hall	70	0	19:16	8	100.00%	88.6%
Tangier	7	0	6:56	N/A	100.00%	N/A
Community (Exmore)	15	1	36:51	1	93.33%	93.3%
System Totals	465	2	30:35	55	99.57%	88.2%

November 2015

EMS Mutual Aid Data

Station : Giving Aid	Station Receiving Aid											NORS	2nd Call	3rd Call	
	Greenbackville	Chincoteague	Saxis	Bloxom	Parksley	Onancock	Melfa	Wachapreague	Onley	Oak Hall	Community (Exmore)				
Greenbackville												1	10	0	0
Chincoteague	1											3	0	4	0
Saxis													8	0	0
Bloxom		1		2								4	0	5	0
Parksley			5										0	4	0
Onancock						3		3					0	1	0
Melfa							4					1	0	6	0
Wachapreague													5	0	0
Onley				2	1	2	1						1	2	0
Oak Hall	9	3	7										0	7	1
Community (Exmore)						1							0	1	0
North. Co.															
Wallops FD	1														
Total	10	4	8	5	4	1	6	5	3	8	1	24	30	1	

Over 20 minute response Detail

Date and Alarm Time	Dist.	Response Time	Explanation
11/9/2015 23:06	ST11	0:20:19	3rd due Ambulance to fire response
11/28/2015 16:09	ST13	0:36:51	2nd call with long drive time

Benchmark = The Accomack County Board of Supervisors established 20 minute standard for emergency response.

* This data excludes F1 Med (Medical Assist) calls in Fire Data

NORS = No Response by station. The call was handled by another station or agency.

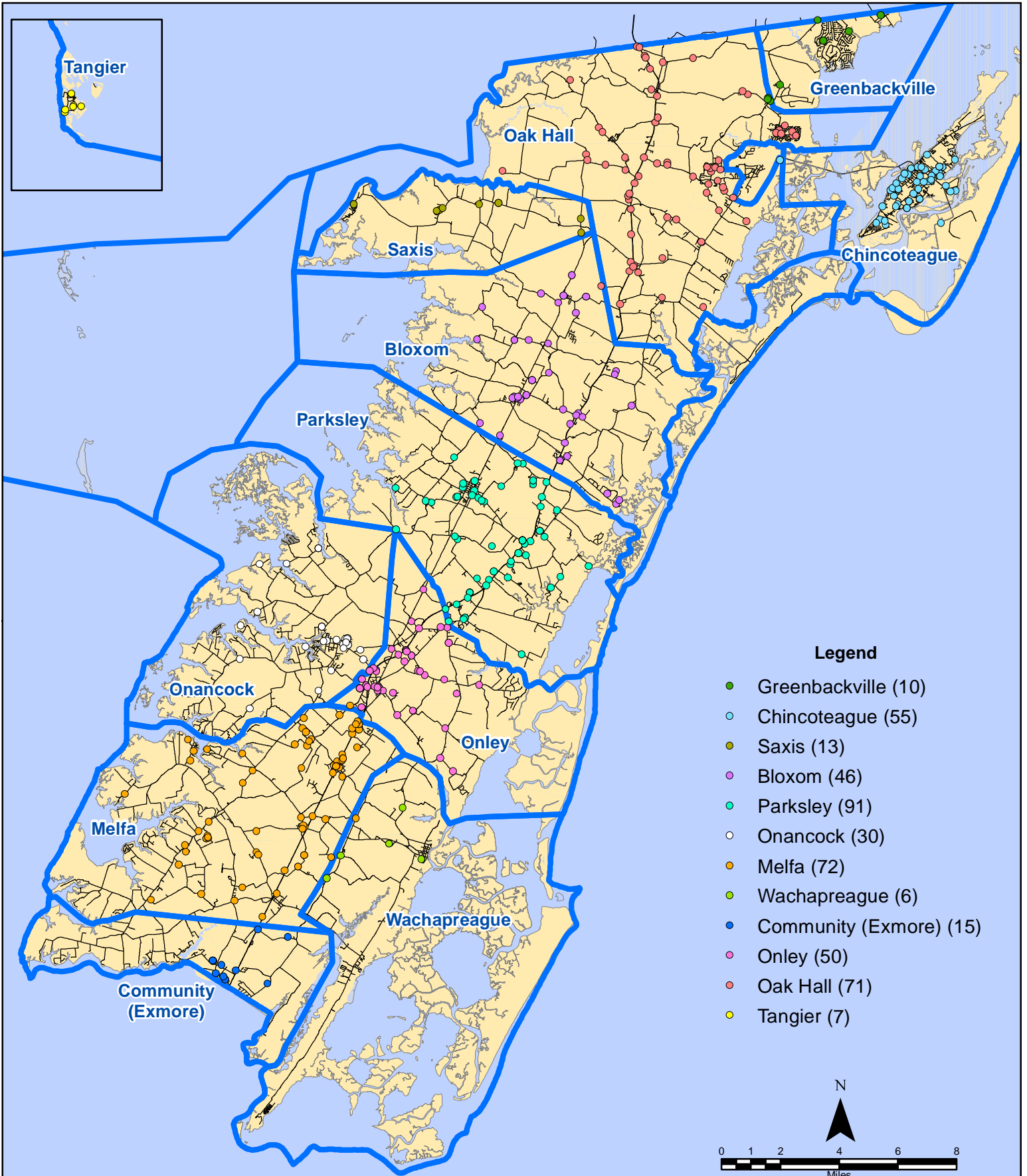
2nd Call = 2nd Ambulance call received while first ambulance was on another call.

3rd Call = 3rd Ambulance call received while First & Second Ambulances were on other calls.

This information was prepared using data supplied by the Eastern Shore of Virginia 911 Center.

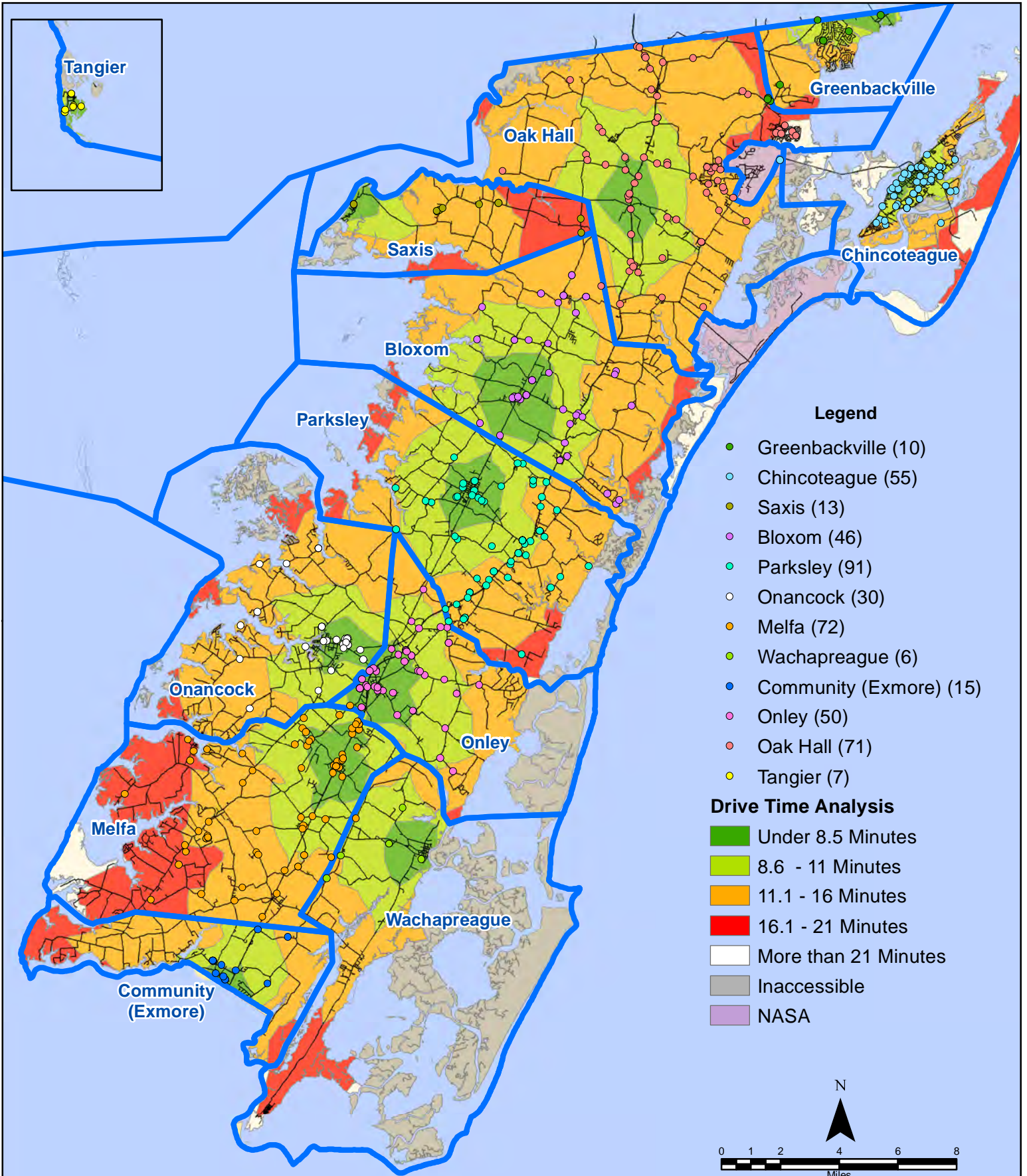
This information is original incident data only and may not be representative of all units or stations who responded to an incident.

November 2015 EMS Calls By District



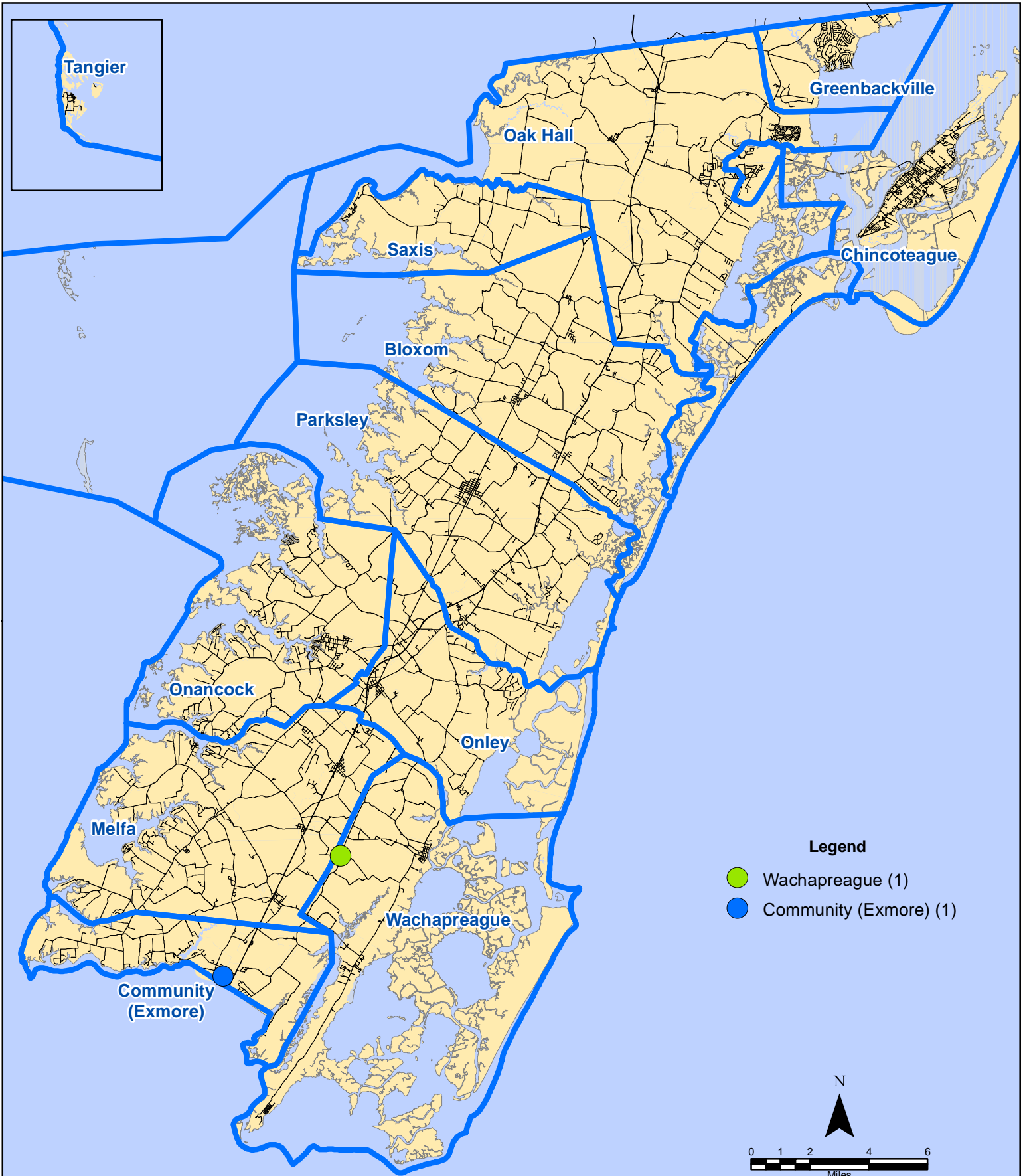
All points are plotted using X and Y coordinates provided by the ESVA 911 Center.
 Points may be plotted over one another when they are in close proximity.

November 2015 EMS Calls By District



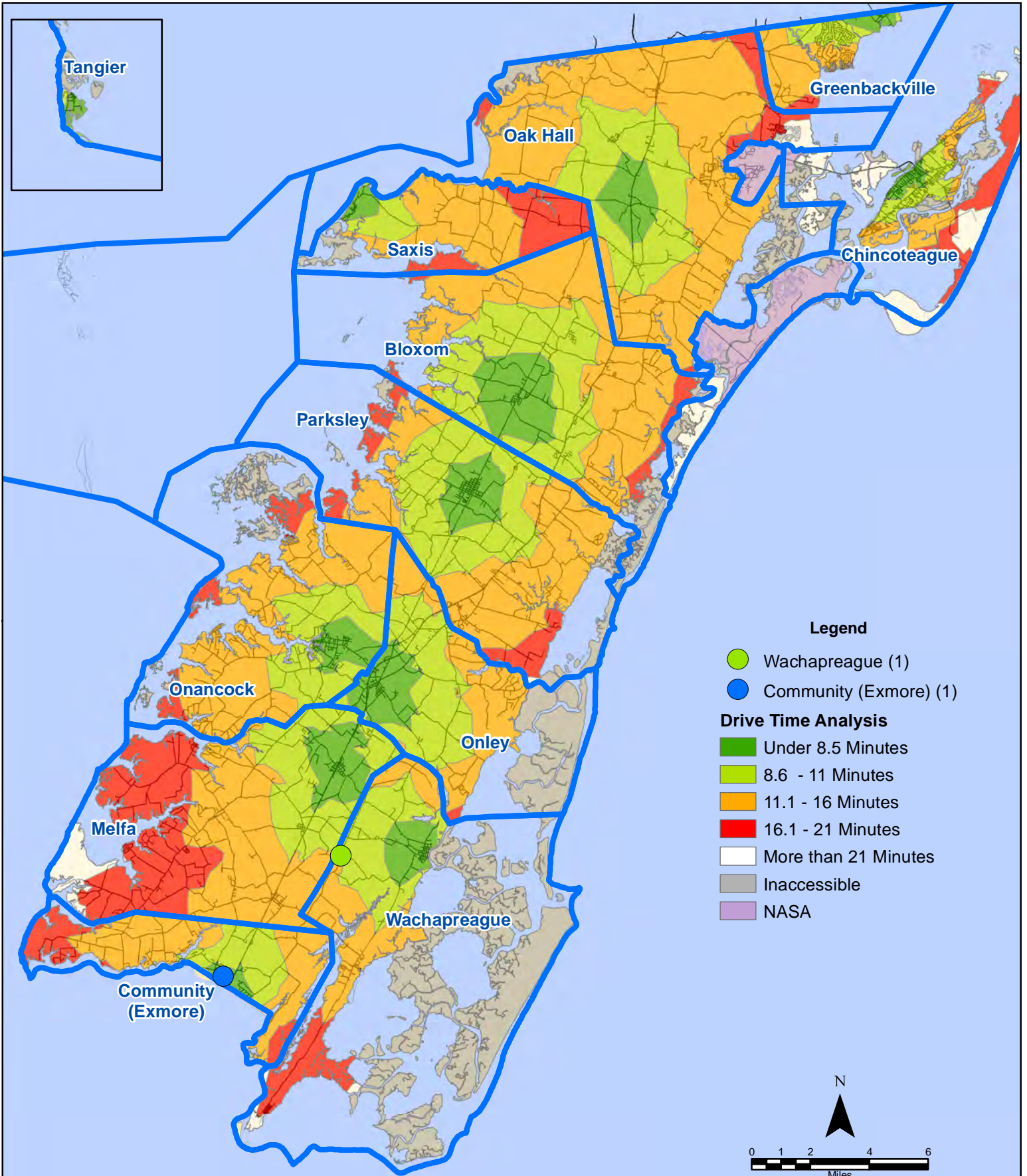
All points are plotted using X and Y coordinates provided by the ESVA 911 Center. Points may be plotted over one another when they are in close proximity.

November 2015 EMS Calls With Response Time Greater Than 20 Mins.



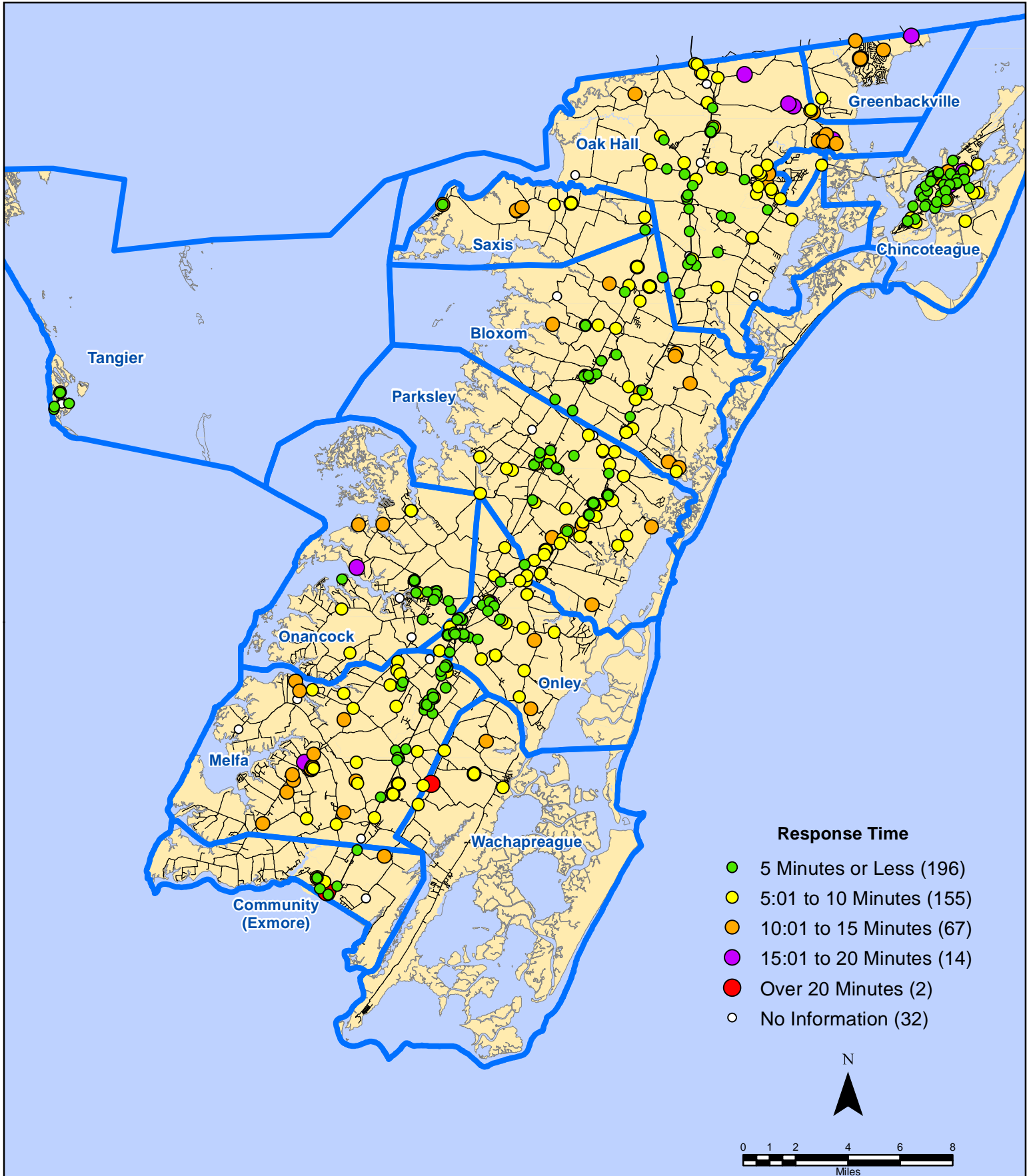
All points are plotted using X and Y coordinates provided by the ESVA 911 Center. Points may be plotted over one another when they are in close proximity.

November 2015 EMS Calls With Response Time Greater Than 20 Mins.



All points are plotted using X and Y coordinates provided by the ESVA 911 Center. Points may be plotted over one another when they are in close proximity.

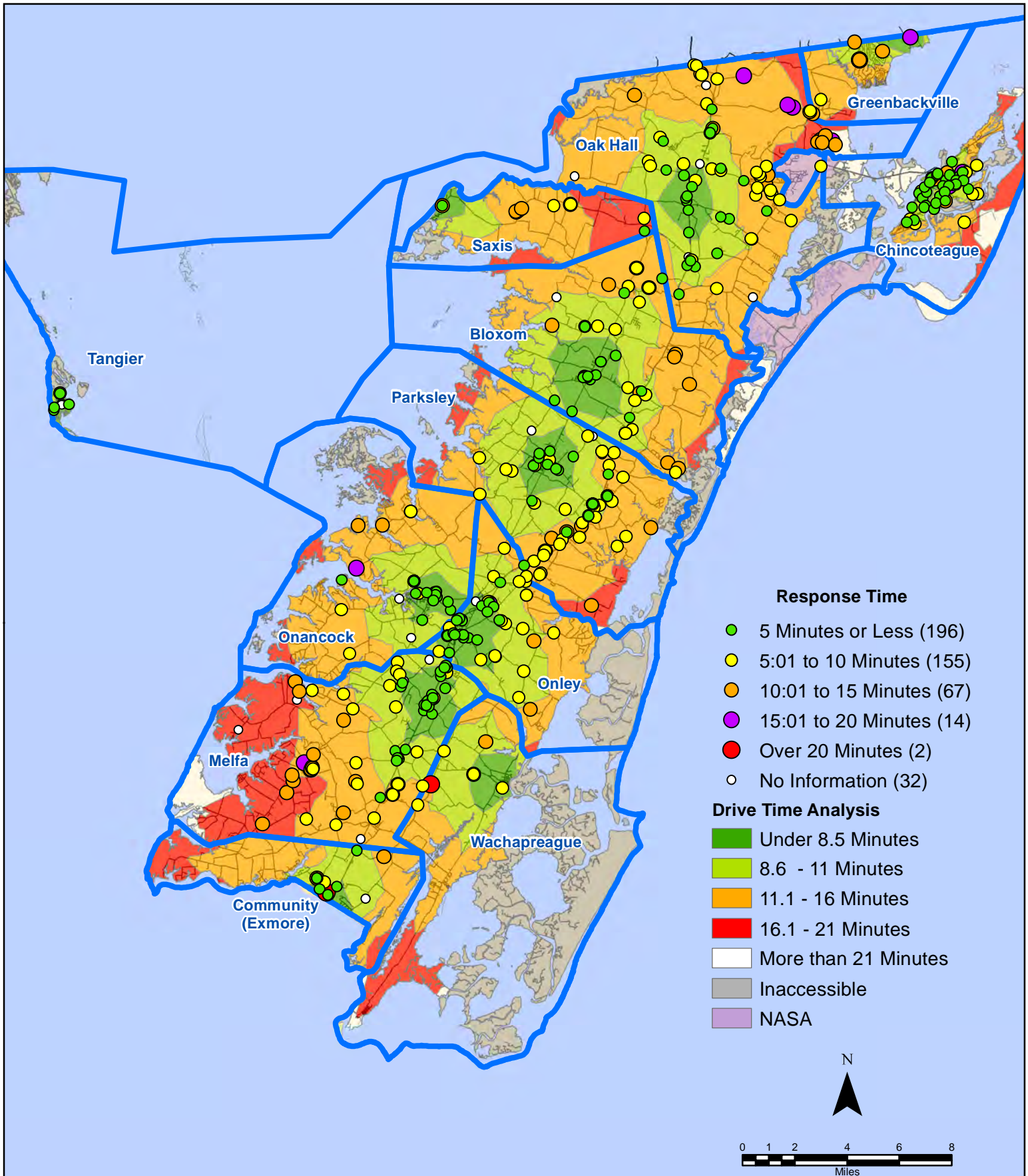
November 2015 EMS Calls By Response Time



All points are plotted using X and Y coordinates provided by the ESVA 911 Center. Points may be plotted over one another when they are in close proximity.

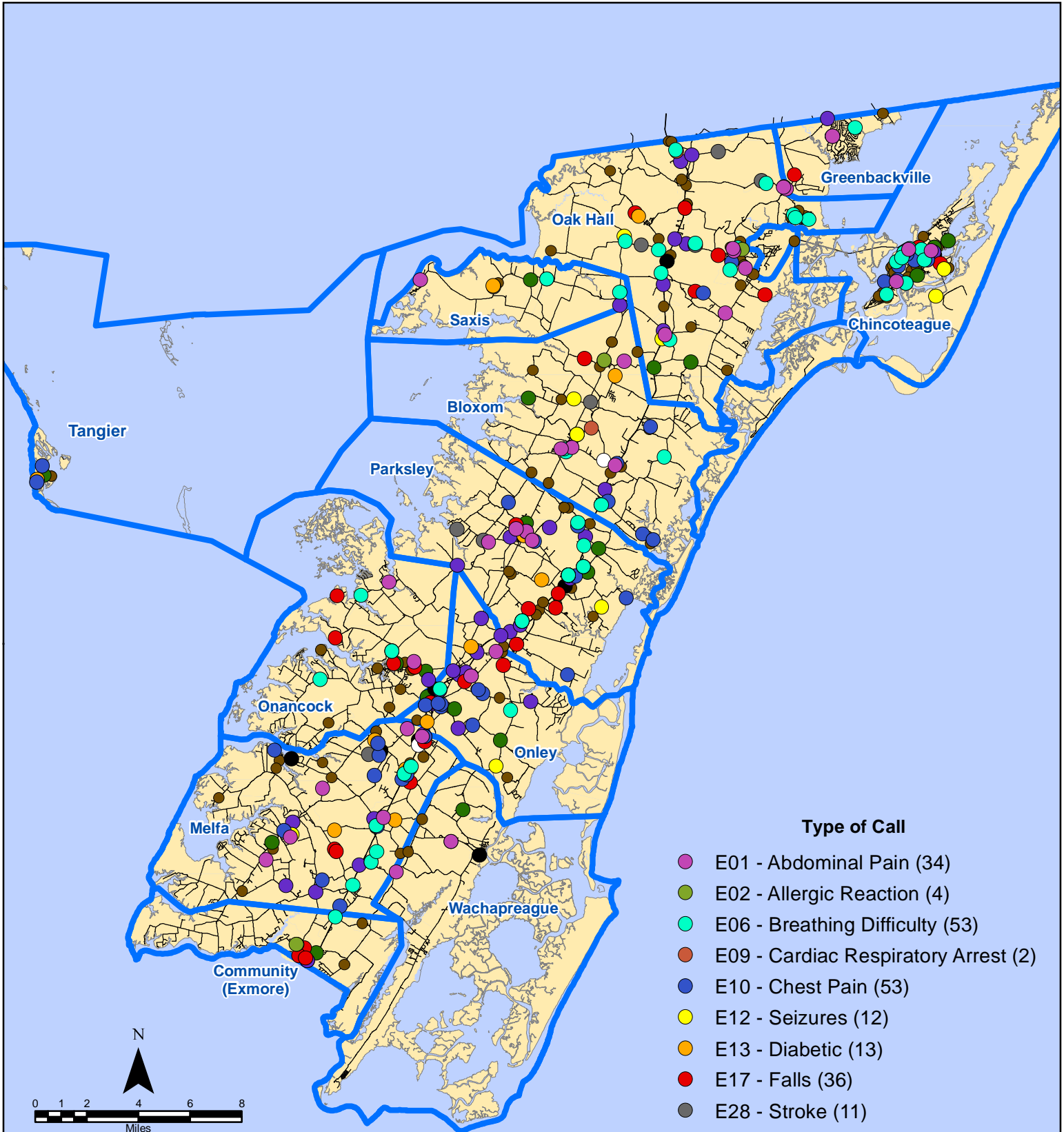
Map Prepared by the Accomack County Department of Planning & Community Development using data from the ESVA 911 Center. - December 9, 2015

November 2015 EMS Calls By Response Time



All points are plotted using X and Y coordinates provided by the ESVA 911 Center. Points may be plotted over one another when they are in close proximity.

November 2015 EMS Calls By Type



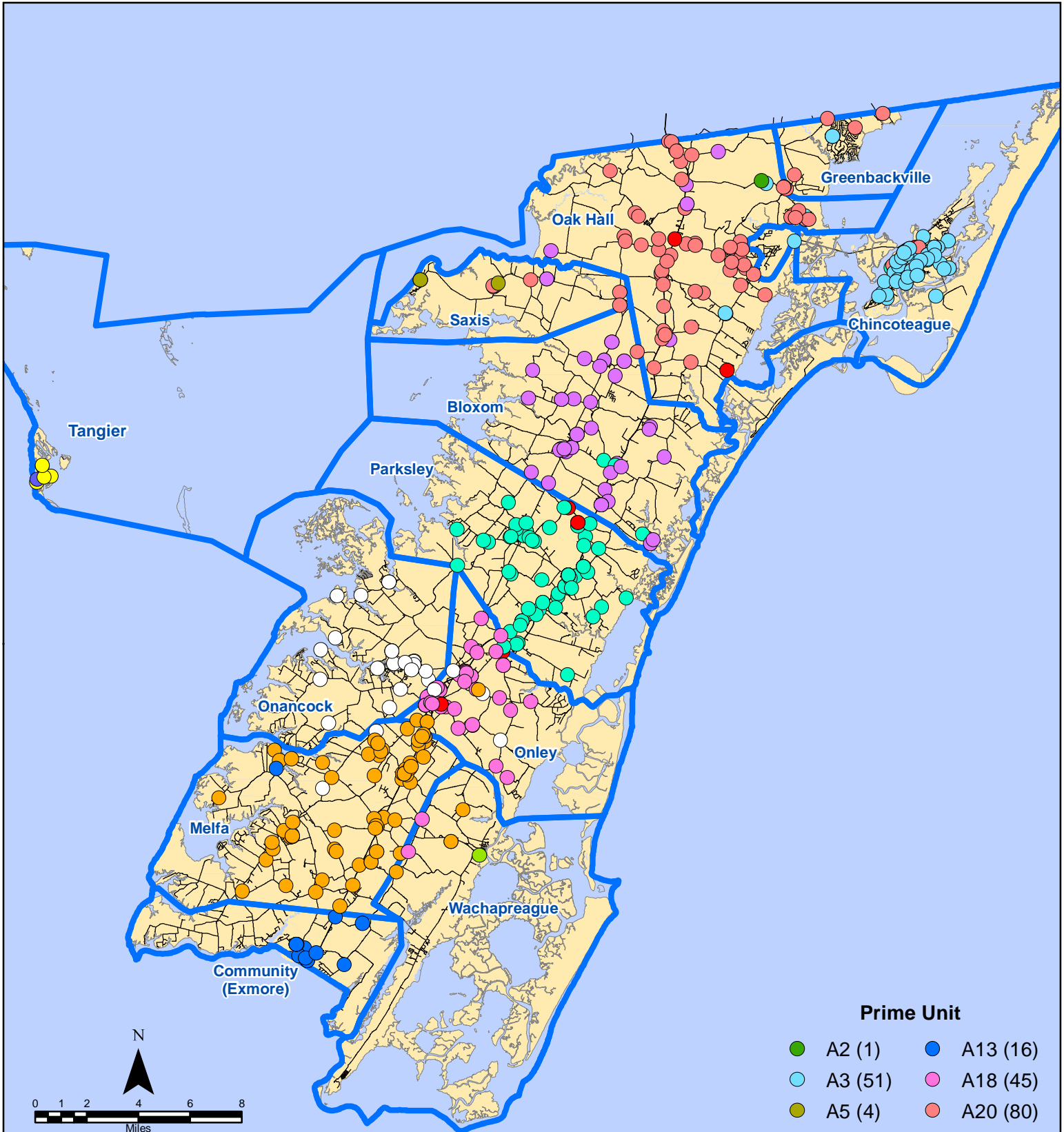
Type of Call

- E01 - Abdominal Pain (34)
- E02 - Allergic Reaction (4)
- E06 - Breathing Difficulty (53)
- E09 - Cardiac Respiratory Arrest (2)
- E10 - Chest Pain (53)
- E12 - Seizures (12)
- E13 - Diabetic (13)
- E17 - Falls (36)
- E28 - Stroke (11)
- E29I - Accident With Injury (39)
- E29X - Accident with Entrapment (2)
- E30 - Trauma (10)
- E31 - Unconscious Person (24)
- All Other Codes (173)

Map Prepared by the Accomack County Department of Planning & Community Development using data from the ESVA 911 Center. - December 9, 2015

All points are plotted using X and Y coordinates provided by the ESVA 911 Center. Points may be plotted over one another when they are in close proximity.

November 2015 EMS Calls By Prime Unit



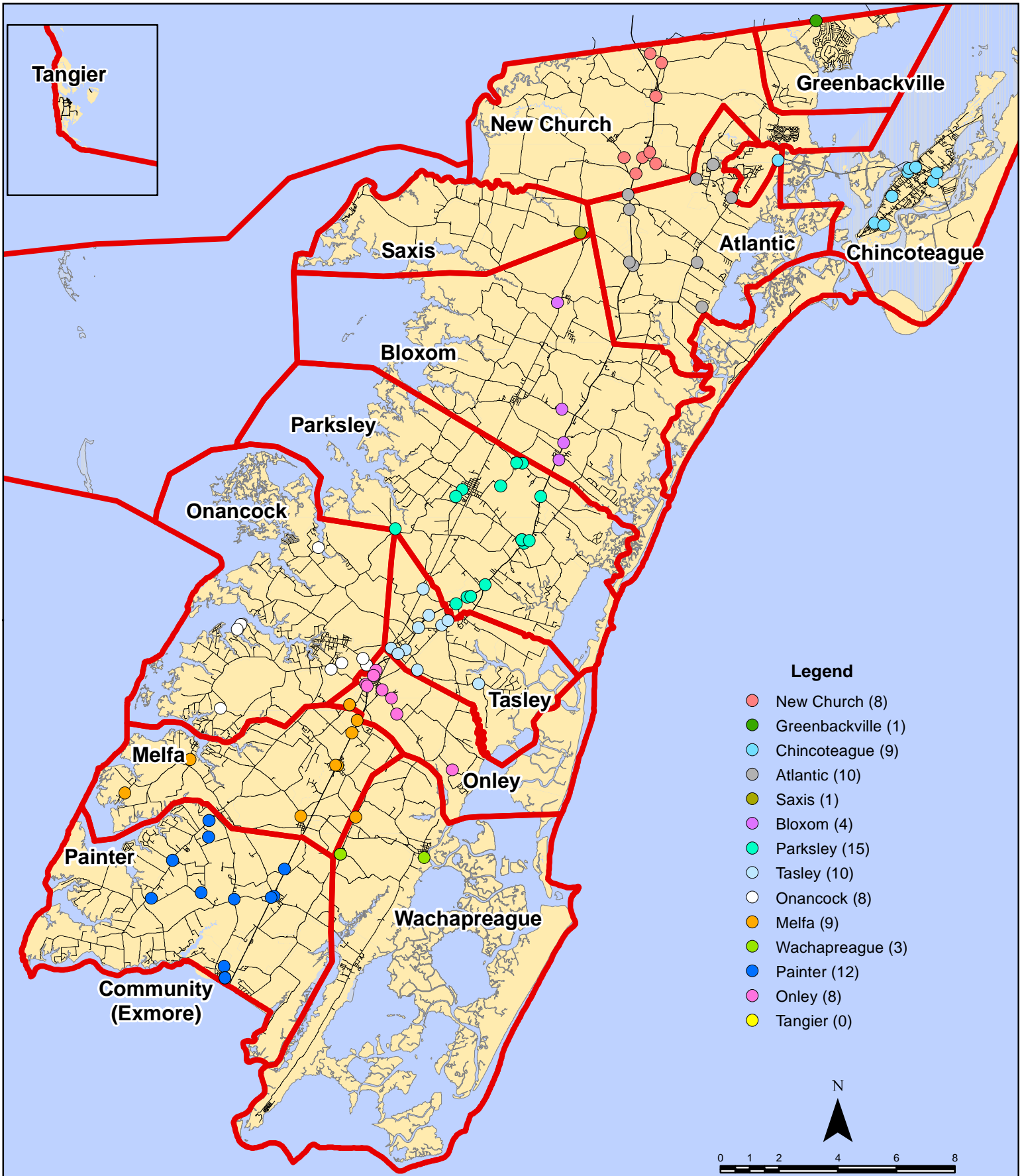
Prime Unit

● A2 (1)	● A13 (16)
● A3 (51)	● A18 (45)
● A5 (4)	● A20 (80)
● A6 (50)	● A21 (6)
● A7 (91)	● A25 (1)
● A9 (35)	● TPR4 (1)
● A10 (75)	● None (9)
● A11 (1)	

Map Prepared by the Accomack County Department of Planning & Community Development using data from the ESVA 911 Center. - December 9, 2015

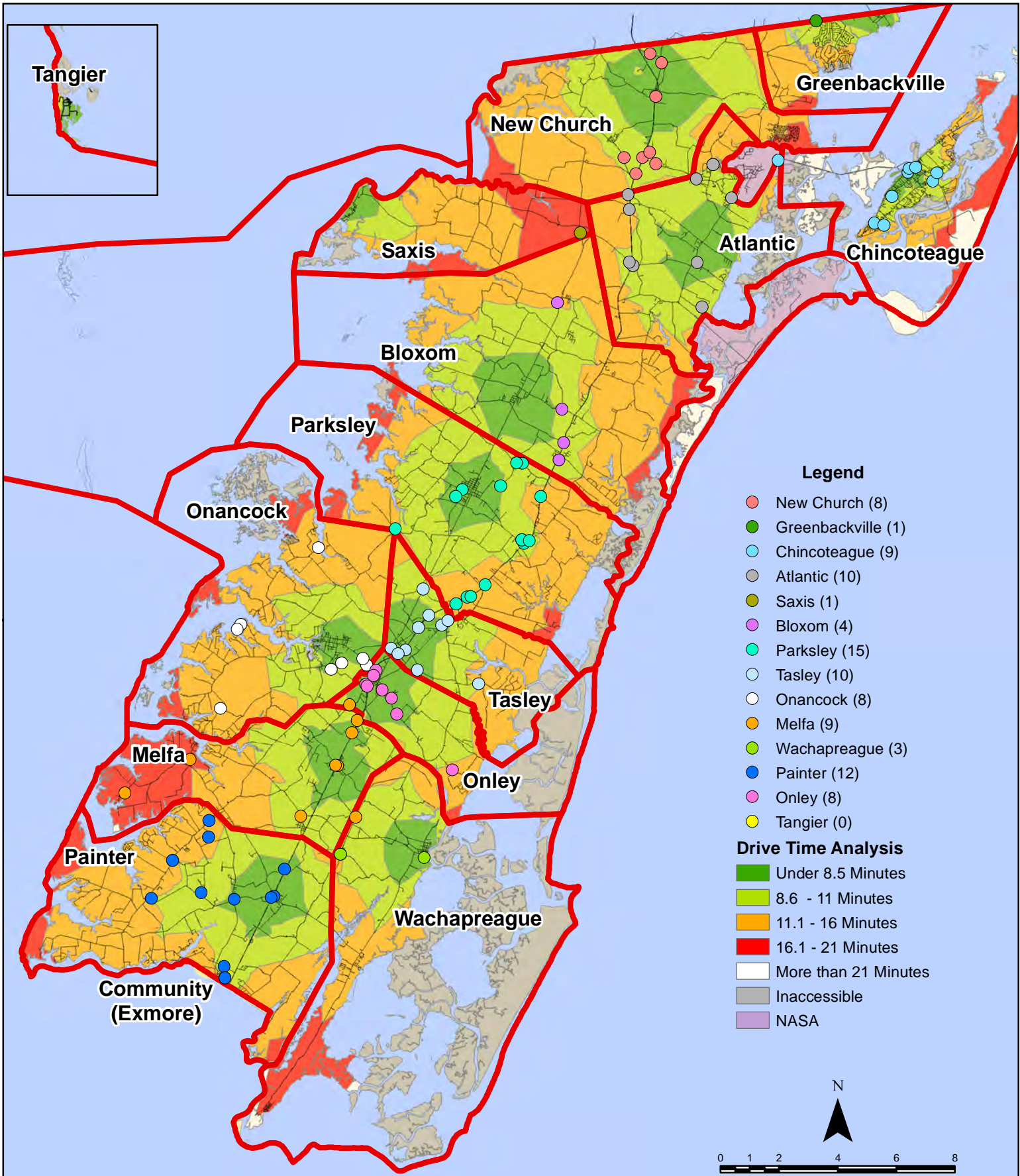
All points are plotted using X and Y coordinates provided by the ESVA 911 Center. Points may be plotted over one another when they are in close proximity.

November 2015 Fire Calls By District

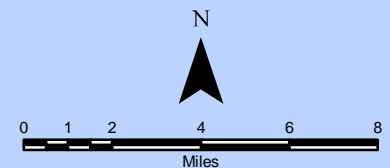


All points are plotted using X and Y coordinates provided by the ESVA 911 Center. Points may be plotted over one another when they are in close proximity.

November 2015 Fire Calls By District

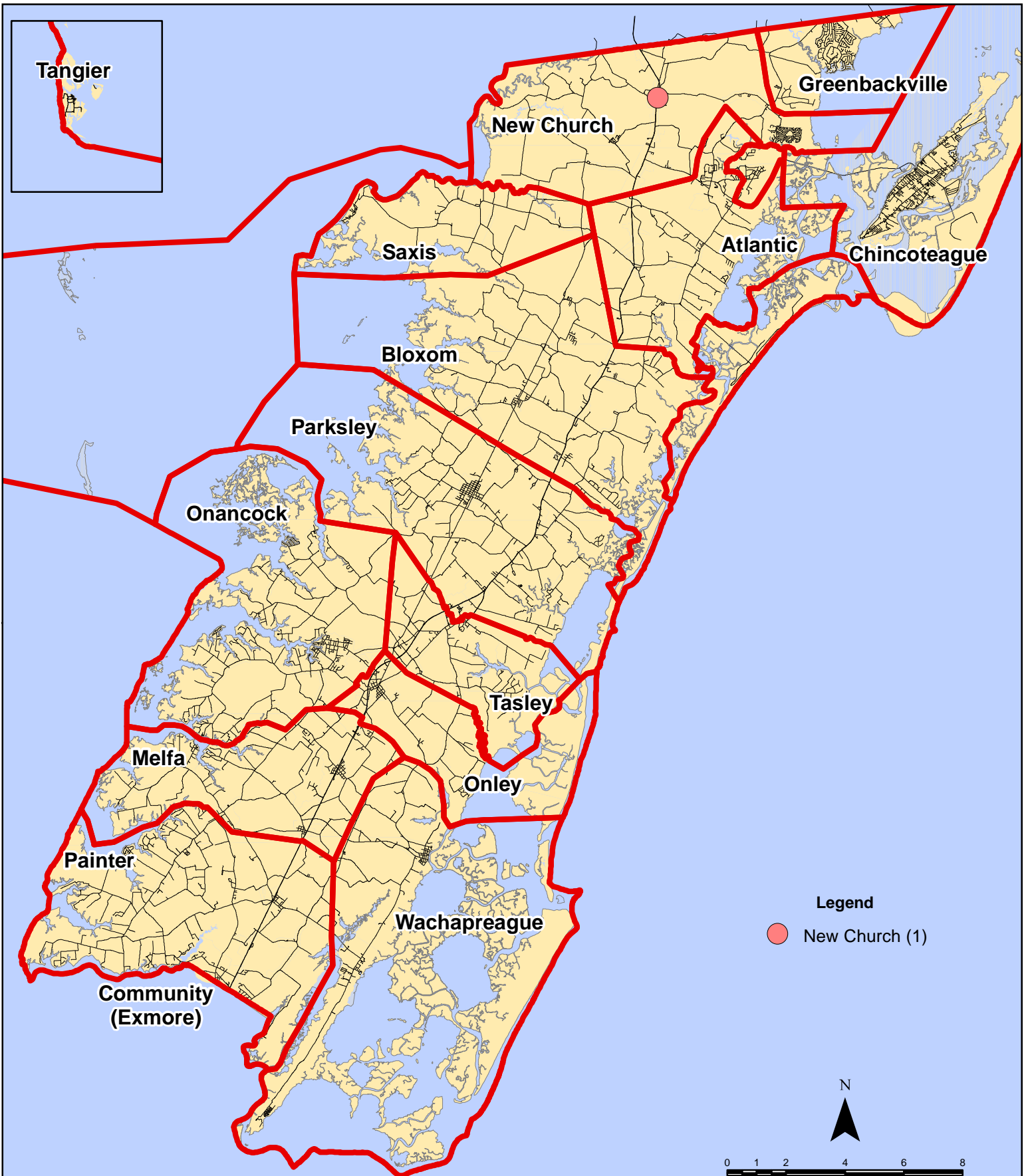


All points are plotted using X and Y coordinates provided by the ESVA 911 Center. Points may be plotted over one another when they are in close proximity.



Map Prepared by the Accomack County Department of Planning & Community Development using data from the ESVA 911 Center. - December 6, 2015

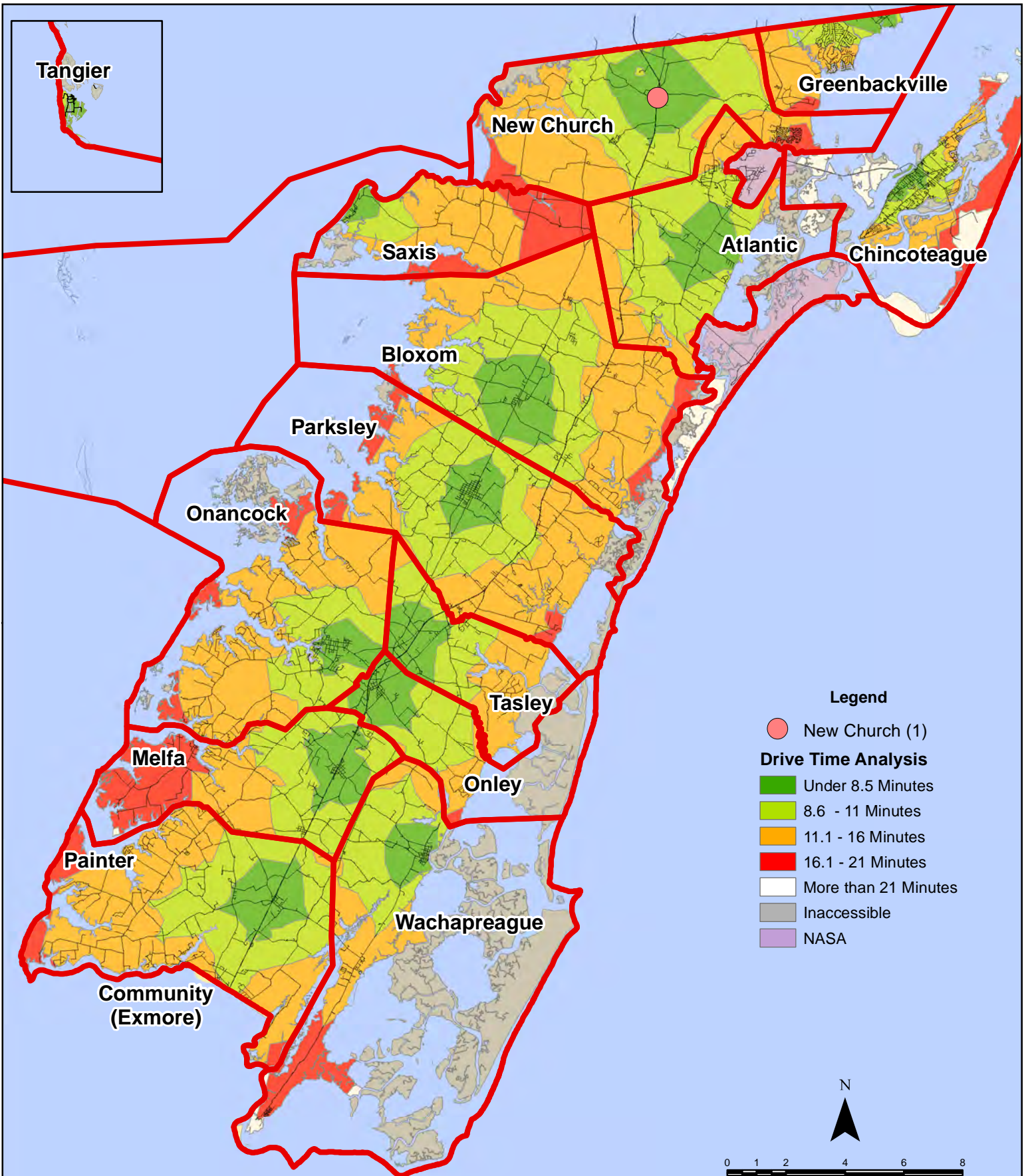
November 2015 Fire Calls With Response Time Greater Than 20 Mins.



All points are plotted using X and Y coordinates provided by the ESVA 911 Center. Points may be plotted over one another when they are in close proximity.

Map Prepared by the Accomack County Department of Planning & Community Development using data from the ESVA 911 Center. - December 9, 2015

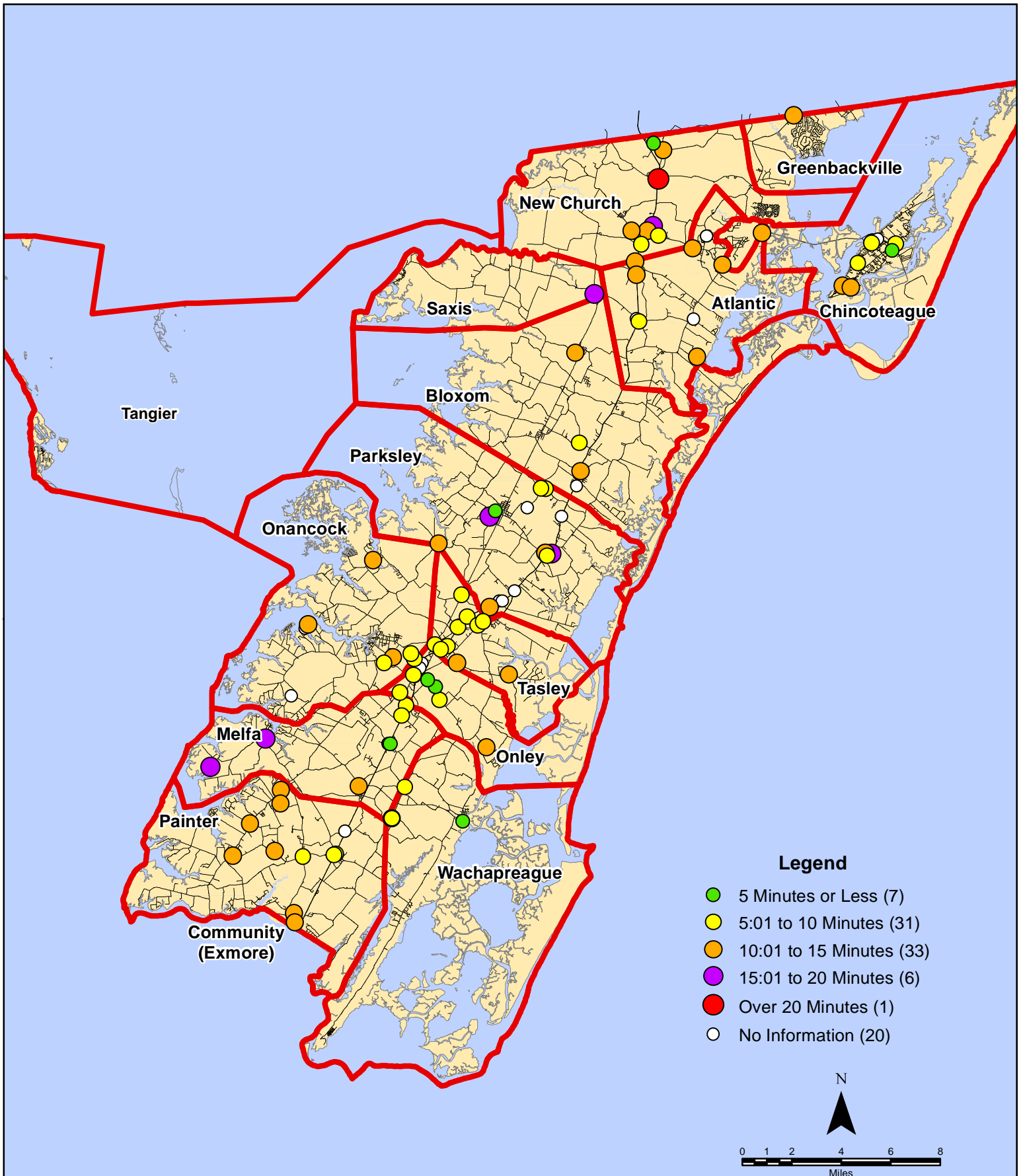
November 2015 Fire Calls With Response Time Greater Than 20 Mins.



All points are plotted using X and Y coordinates provided by the ESVA 911 Center. Points may be plotted over one another when they are in close proximity.

Map Prepared by the Accomack County Department of Planning & Community Development using data from the ESVA 911 Center. - December 9, 2015

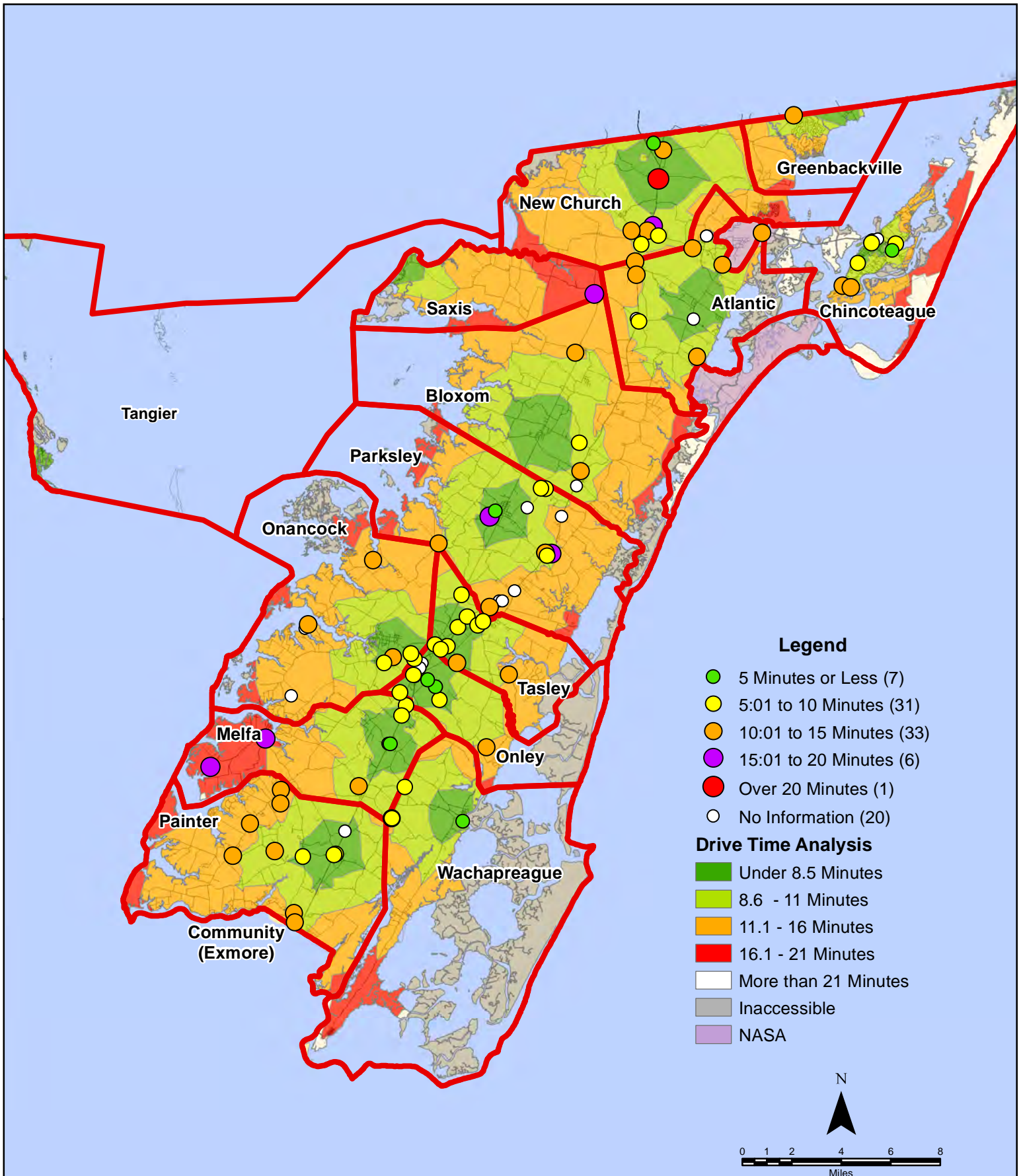
November 2015 Fire Calls By Response Time



All points are plotted using X and Y coordinates provided by the ESVA 911 Center. Points may be plotted over one another when they are in close proximity.

Map Prepared by the Accomack County Department of Planning & Community Development using data from the ESVA 911 Center. - December 9, 2015

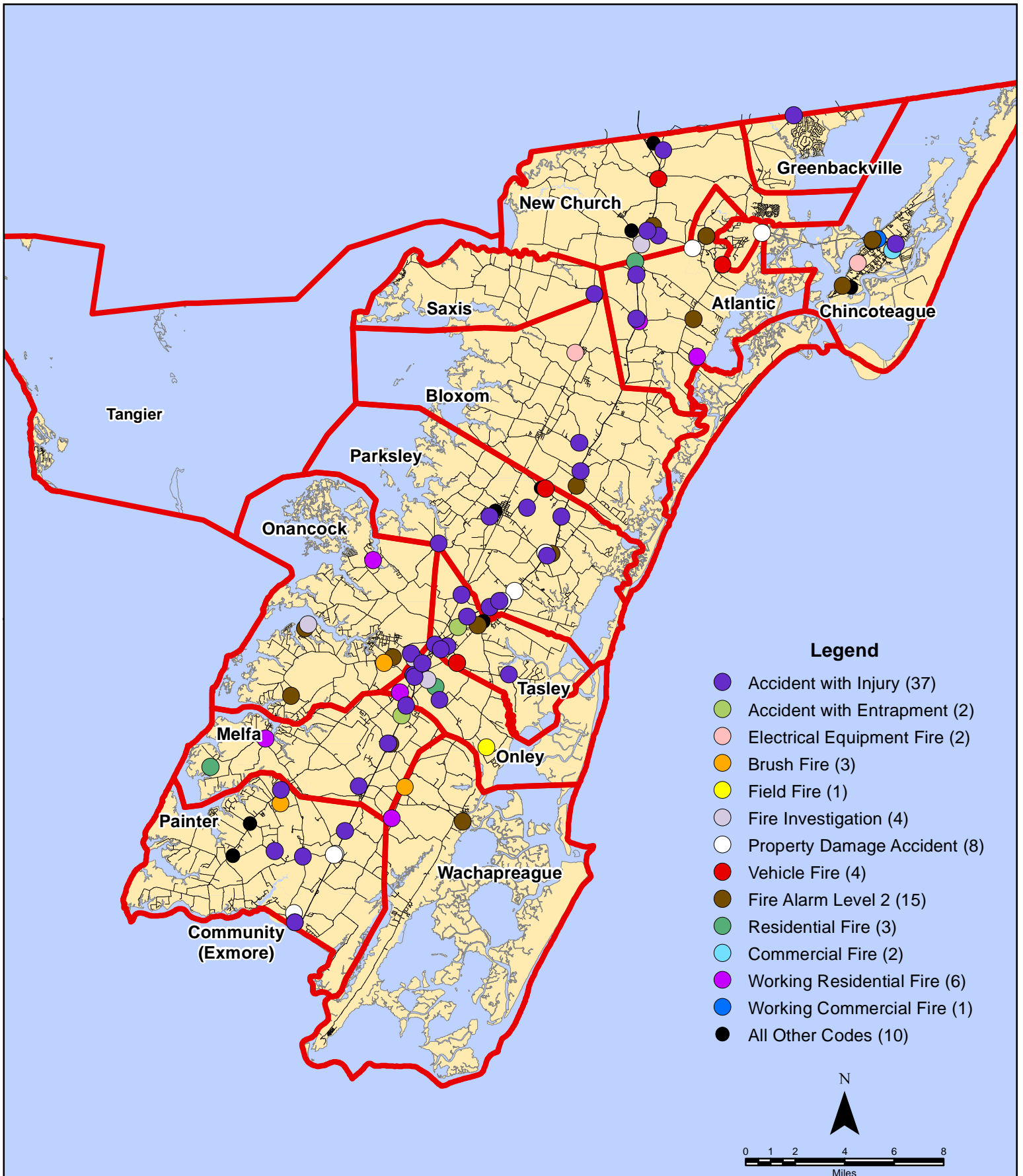
November 2015 Fire Calls By Response Time



All points are plotted using X and Y coordinates provided by the ESVA 911 Center. Points may be plotted over one another when they are in close proximity.

Map Prepared by the Accomack County Department of Planning & Community Development using data from the ESVA 911 Center. - December 9, 2015

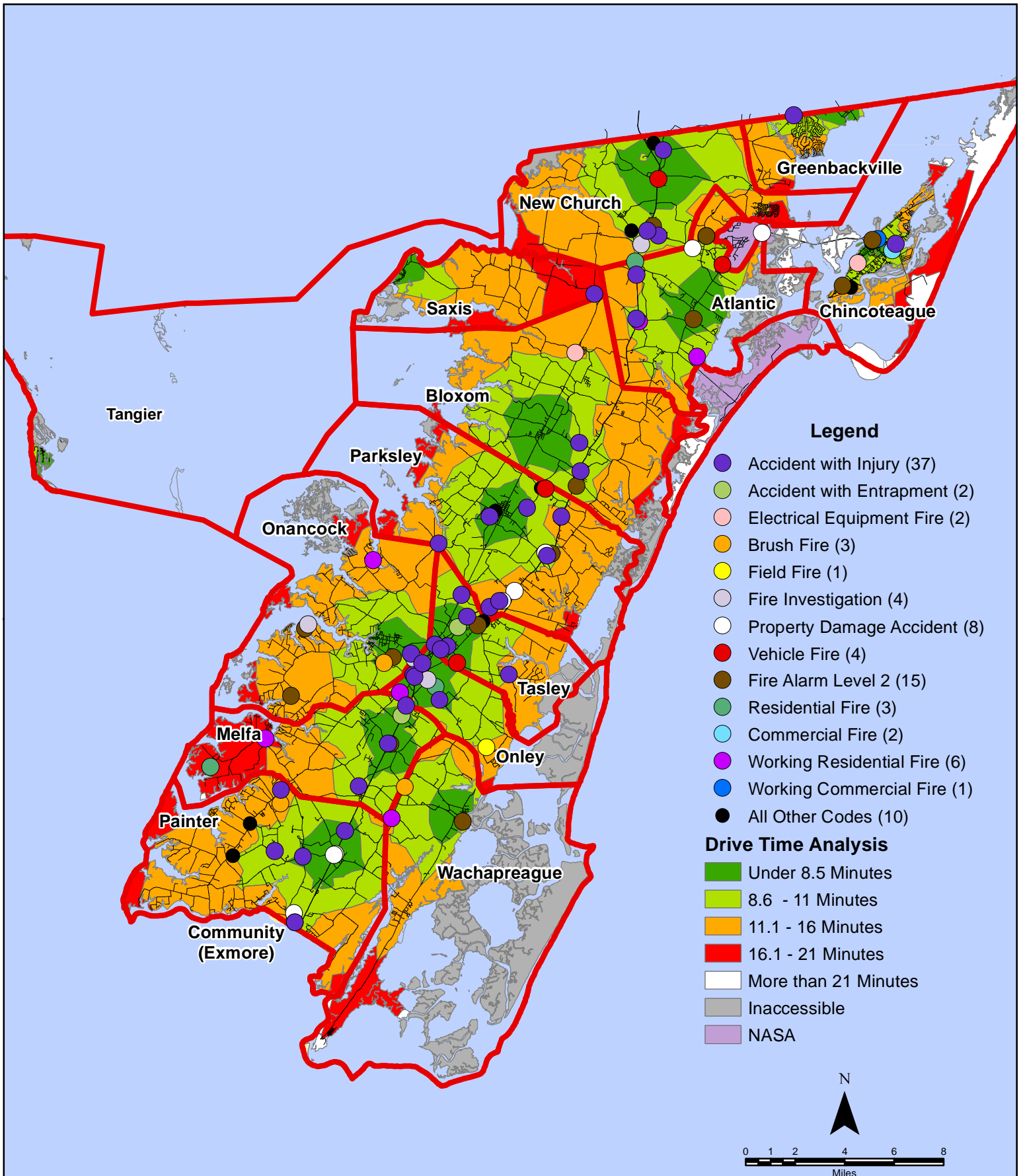
November 2015 Fire Calls By Type



All points are plotted using X and Y coordinates provided by the ESVA 911 Center. Points may be plotted over one another when they are in close proximity.

Map Prepared by the Accomack County Department of Planning & Community Development using data from the ESVA 911 Center. - December 9, 2015

November 2015 Fire Calls By Type



All points are plotted using X and Y coordinates provided by the ESVA 911 Center. Points may be plotted over one another when they are in close proximity.