

Fire - Performance Measure Data					
District	Total Calls	Greater than 20 min. Response	%	Max. Response Time	NORS
New Church	12	0	100%	15:22	0
Greenbackville	1	0	100%	14:05	0
Chincoteague	N/A	N/A	N/A	N/A	N/A
Atlantic	22	0	100%	10:35	0
Saxis	1	0	100%	13:47	0
Bloxom	11	0	100%	15:24	0
Parksley	14	0	100%	10:03	0
Tasley	5	0	100%	8:26	0
Onancock	7	0	100%	13:28	0
Melfa	10	0	100%	19:49	0
Wachapreague	1	0	100%	9:06	0
Painter	8	0	100%	17:16	0
Onley	7	0	100%	11:38	0
Tangier	2	0	100%	7:34	0
Totals:	101	0	100%		0

Chincoteague Data Not Available

EMS - Performance Measure Data							
District	Total Calls	Career	Combination	Greater than 20 min. Response	%	Max. Response Time	NORS
Greenbackville	15	2	5	2	87%	33:07	6
Chincoteague	N/A	N/A	N/A	N/A	N/A	N/A	N/A
Saxis	8	1	2	1	88%	21:39	4
Bloxom	62	25	9	7	89%	32:34	11
Parksley	111	30	77	4	96%	31:13	0
Onancock	56	17	33	1	98%	23:52	0
Melfa	50	15	0	1	98%	22:13	0
Wachapreague	12	0	4	0	100%	17:14	4
Onley	48	24	41	0	100%	17:39	0
Oak Hall	56	30	41	5	91%	24:56	0
Tangier	8	N/A	N/A	1	88%	20:56	0
Community (Exmore)	12	N/A	N/A	1	92%	22:59	1
Totals	438	144	212	23	95%		26

Chincoteague Data Not Available

EMS Mutual Aid Data

Station Receiving Aid

Station : Giving Aid	Greenbackville	Chincoteague	Saxis	Bloxom	Parksley	Onancock	Melfa	Wachapreague	Onley	Oak Hall	Community (Exmore)	NORS	2nd Call	3rd Call
Greenbackville		1							0			6	0	0
Chincoteague									2			n/a	n/a	n/a
Saxis												4	0	0
Bloxom		1		1	1				1			11	2	0
Parksley			11		1				1			0	3	0
Onancock								2				0	4	0
Melfa					1		1	2	1			0	1	0
Wachapreague												4	0	0
Onley				2	1	1	1					0	4	0
Oak Hall	6	2	2									0	3	1
Community (Exmore)							2					1	1	0
Other (NC County)														1
Total	6	n/a	4	13	3	4	1	4	4	4	1	26	18	1

January 2012

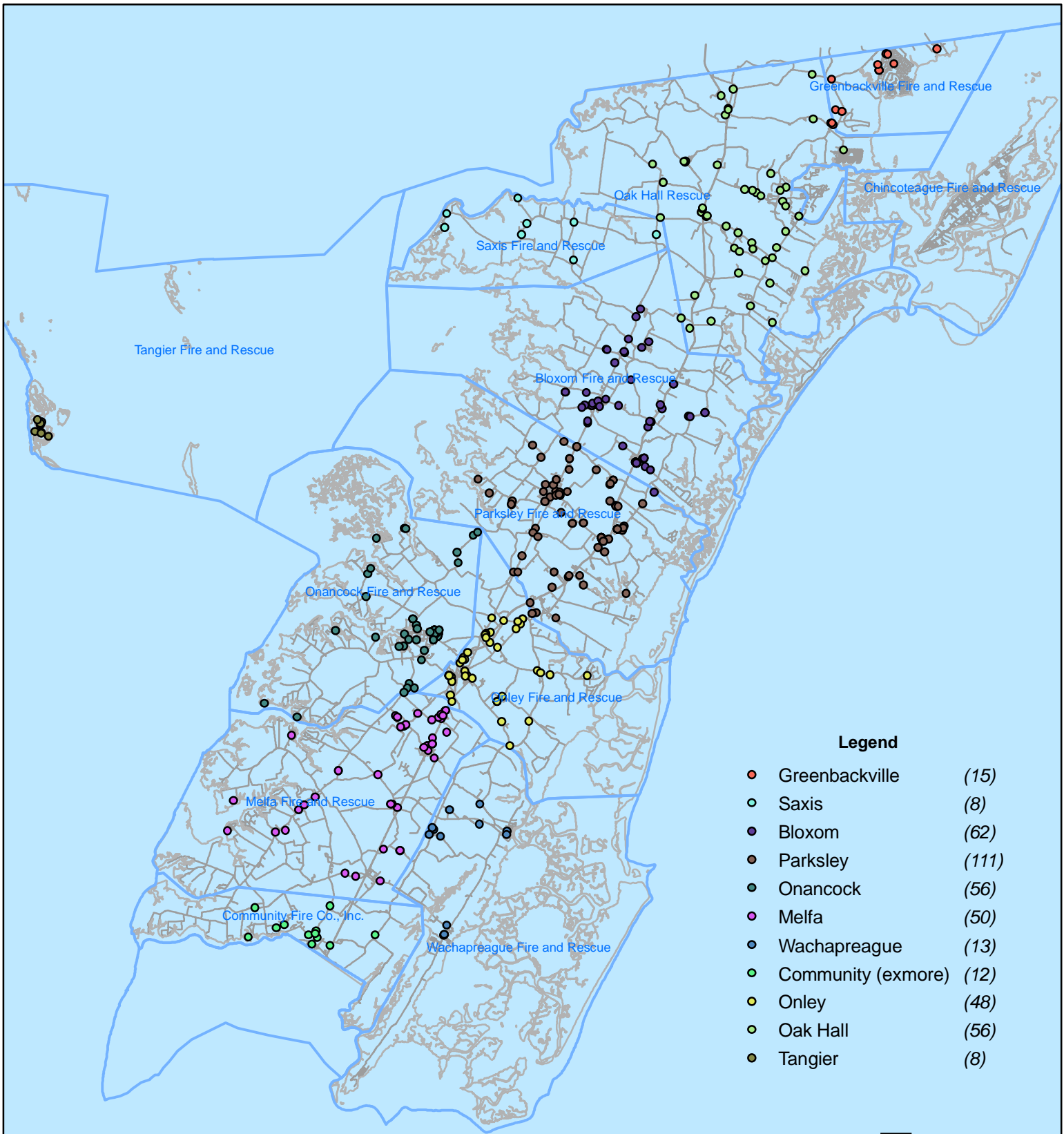
NORS = No Response. Call was handled by another station/agency.

2nd Call = 2nd Ambulance call received while First Ambulance was busy on another call.

3rd Call = 3rd ambulance call received while First and Second Ambulances were on other call.

This information was prepared using data supplied by the Eastern Shore of Virginia 911 Center
 This information is original incident data only and may not be representative of all units or stations who responded to an incident.

January 2012 EMS Calls By District



Legend

● Greenbackville	(15)
○ Saxis	(8)
● Bloxom	(62)
● Parksley	(111)
● Onancock	(56)
● Melfa	(50)
● Wachapreague	(13)
● Community (exmore)	(12)
● Onley	(48)
● Oak Hall	(56)
● Tangier	(8)

No Data Available For Chincoteague

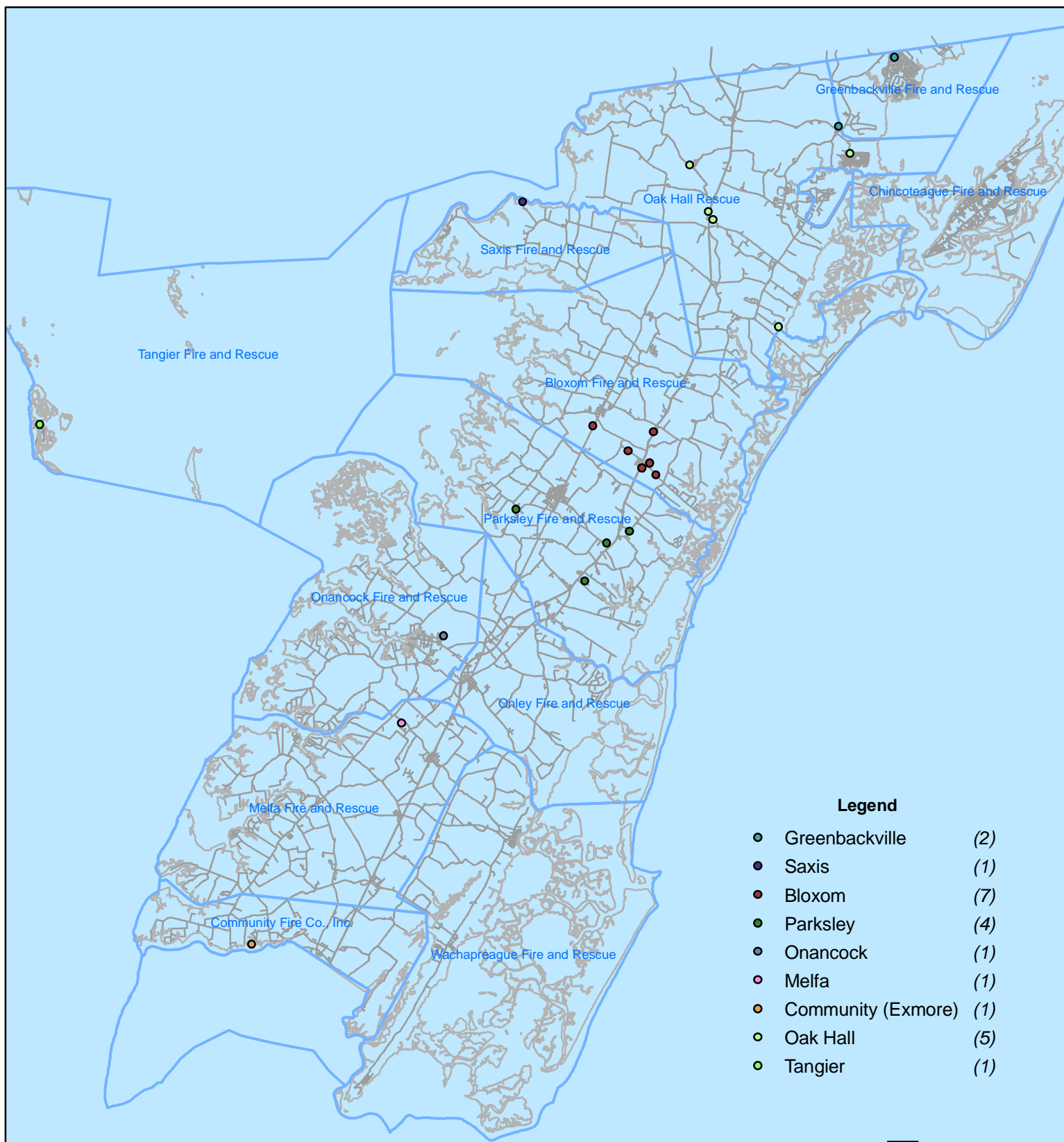
F



All points are plotted using X and Y coordinates provided by the ESVA 911 Center. Points may be plotted over one another when they are in close proximity.

Map Prepared using Data from the ESVA 911 Center

January 2012 EMS Calls With Response Time Greater Than 20 Mins.



No Data Available For Chincoteague

Legend

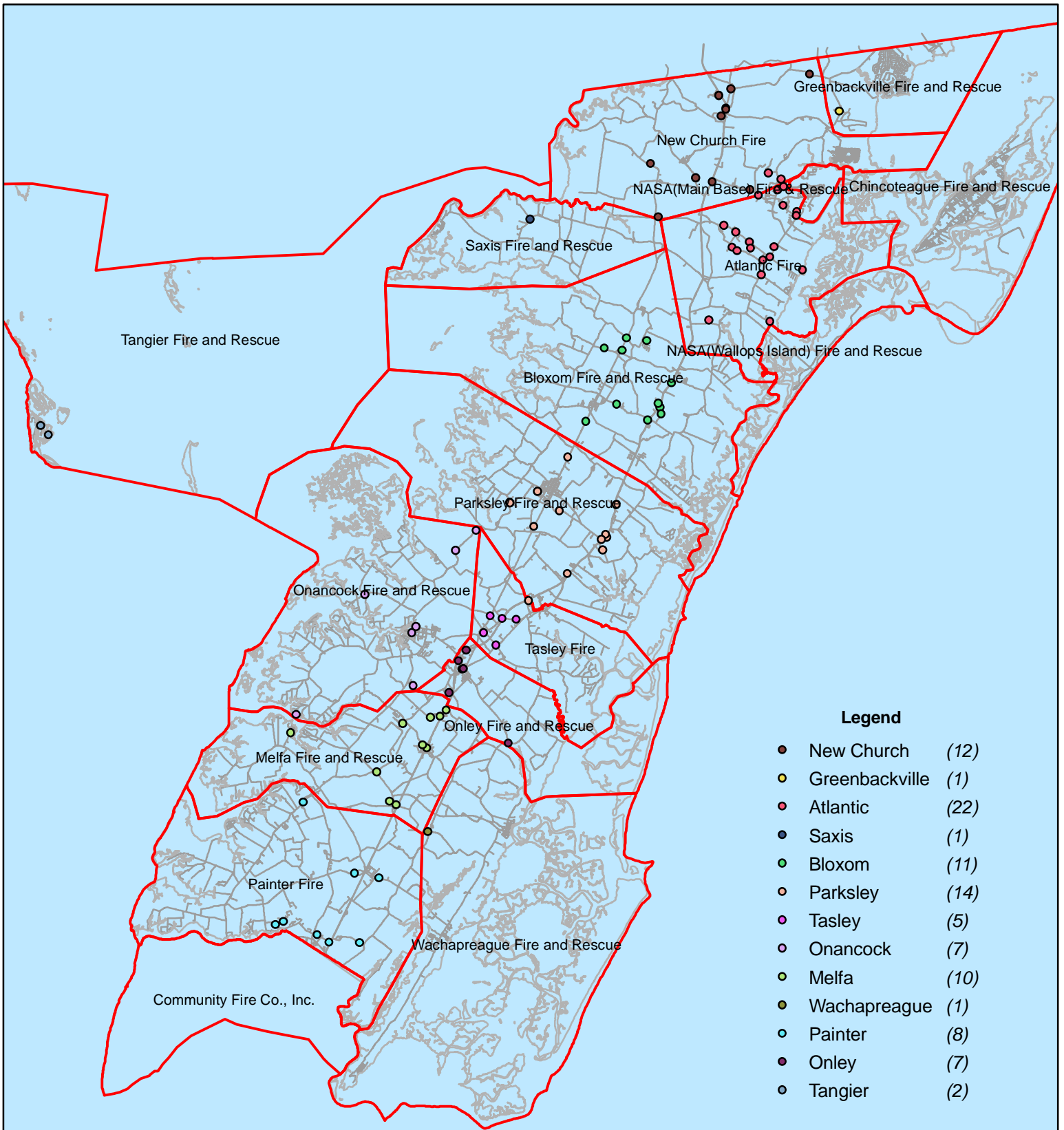
- Greenbackville (2)
- Saxis (1)
- Bloxom (7)
- Parksley (4)
- Onancock (1)
- Melfa (1)
- Community (Exmore) (1)
- Oak Hall (5)
- Tangier (1)

F



All points are plotted using X and Y coordinates provided by the ESVA 911 Center. Points may be plotted over one another when they are in close proximity.

January 2012 Fire Calls By District



Legend

- New Church (12)
- Greenbackville (1)
- Atlantic (22)
- Saxis (1)
- Bloxom (11)
- Parksley (14)
- Tasley (5)
- Onancock (7)
- Melfa (10)
- Wachapreague (1)
- Painter (8)
- Onley (7)
- Tangier (2)

No Data Available For Chincoteague

All points are plotted using X and Y coordinates provided by the ESVA 911 Center. Points may be plotted over one another when they are in close proximity.

