

October 2025

Fire - Performance Measure Data *					
Response District	Total Calls in District	Greater than 20 min. Response Time	Longest Response Time	Calls Handled by other agency	Overall Station Benchmark %
New Church	16	1	0:21:23	4	93.8%
Greenbackville	1	0	0:07:52	0	100.0%
Chincoteague	7	1	0:32:14	1	85.7%
Atlantic	9	0	0:15:44	0	100.0%
Saxis	3	0	0:18:53	0	100.0%
Bloxom	9	1	0:20:29	2	88.9%
Parksley	22	0	0:12:18	2	100.0%
Tasley	10	0	0:14:40	6	100.0%
Onancock	6	0	0:18:23	0	100.0%
Melfa	18	0	0:14:11	7	100.0%
Wachapreague	3	0	0:10:30	0	100.0%
Painter	8	0	0:10:56	0	100.0%
Tangier	0	0	0	0	#DIV/0!
System Totals	112	3	0:32:14	22	97.3%

EMS - Performance Measure Data						
Response District	Total Calls in District	Greater than 20 min. Response Time	Longest Response Time	Calls Handled by other agency	Station Benchmark Compliance %	Overall Station Reliability %
Greenbackville	49	3	0:21:52	4	93.9%	91.8%
Chincoteague	65	0	0:16:14	0	100.0%	100.0%
Saxis	15	0	0:14:02	3	100.0%	80.0%
Bloxom	52	0	0:16:47	45	100.0%	13.5%
Parksley	93	1	0:19:26	1	98.9%	98.9%
Onancock	121	2	0:46:10	10	98.3%	91.7%
Melfa	61	1	0:25:33	34	98.4%	44.3%
Painter	42	0	0:16:19	2	100.0%	95.2%
Oak Hall	81	0	0:19:53	1	100.0%	98.8%
Tangier	4	0	0:07:41	0	100.0%	100.0%
Community (Exmore)	8	0	0:09:08	1	100.0%	87.5%
System Totals	591	7	0:46:10	101	98.8%	82.9%

		Station Giving Aid														
Station Receiving Aid		Greenbackville	Chincoteague	Saxis	Bloxom	Parksley	Onancock	Melfa	Painter	Oak Hall	Community (Exmore)	Northampton	Wallops	NORS	2nd Call	3rd Call
		Greenbackville									4					
Chincoteague																
Saxis									3					3		
Bloxom					34				11					45		
Parksley						1									1	
Onancock					4		6							2	8	
Melfa					1	15	16		2					30	4	
Painter							1			1				1	1	
Oak Hall		1														1
Community (Exmore)								1						1		
Northampton Co.																
Wallops																
Totals	0	1	0	0	39	16	7	17	18	3	0	0	82	18	1	

Transport Destination			
Hospital Destination by Unit	Riverside - Shore Memorial	PRMC / Tidal Health	Other
Chincoteague	12	22	0
Saxis	15	5	0
Bloxom	4	0	0
Parksley	100	2	1
Onancock	82	0	0
Melfa	17	0	1
Painter	45	0	2
Oak Hall	55	14	2
Wallops	0	0	0
Totals	338	65	6

Benchmark = The Accomack County Board of Supervisors established a 20 minute standard for emergency response.

NORS = No Response by station or the call was handled by another station or agency.

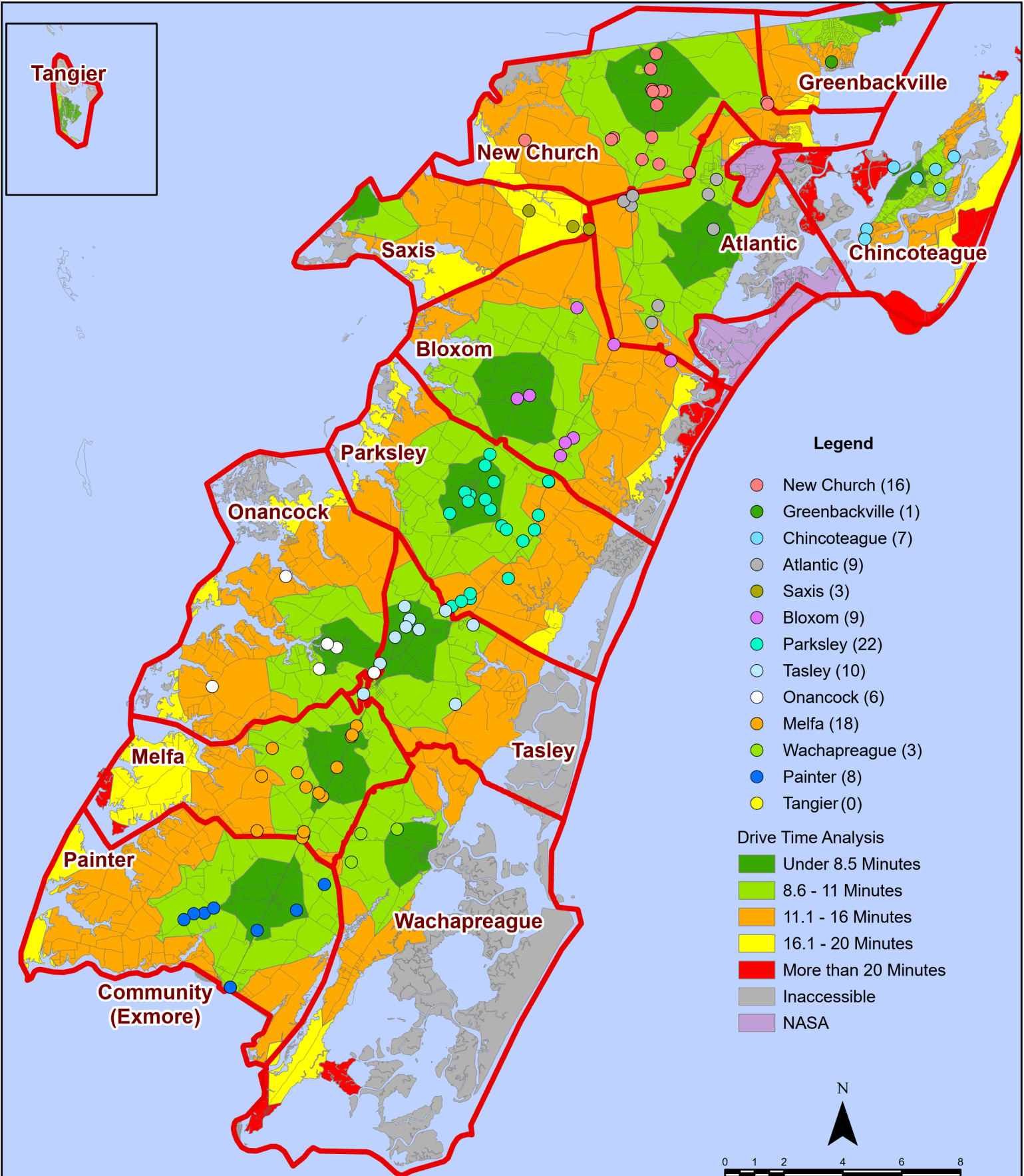
2nd Call = 2nd ambulance call received while first ambulance was on another call.

3rd Call = 3rd ambulance call received while first & second ambulances were on other calls.

* This data excludes F1 Med (Medical Assist) calls in the Fire Data.

This information was prepared using data supplied by the Eastern Shore of Virginia 911 Center. This information is original incident data only and may not be representative of all units and/or stations who responded to an incident.

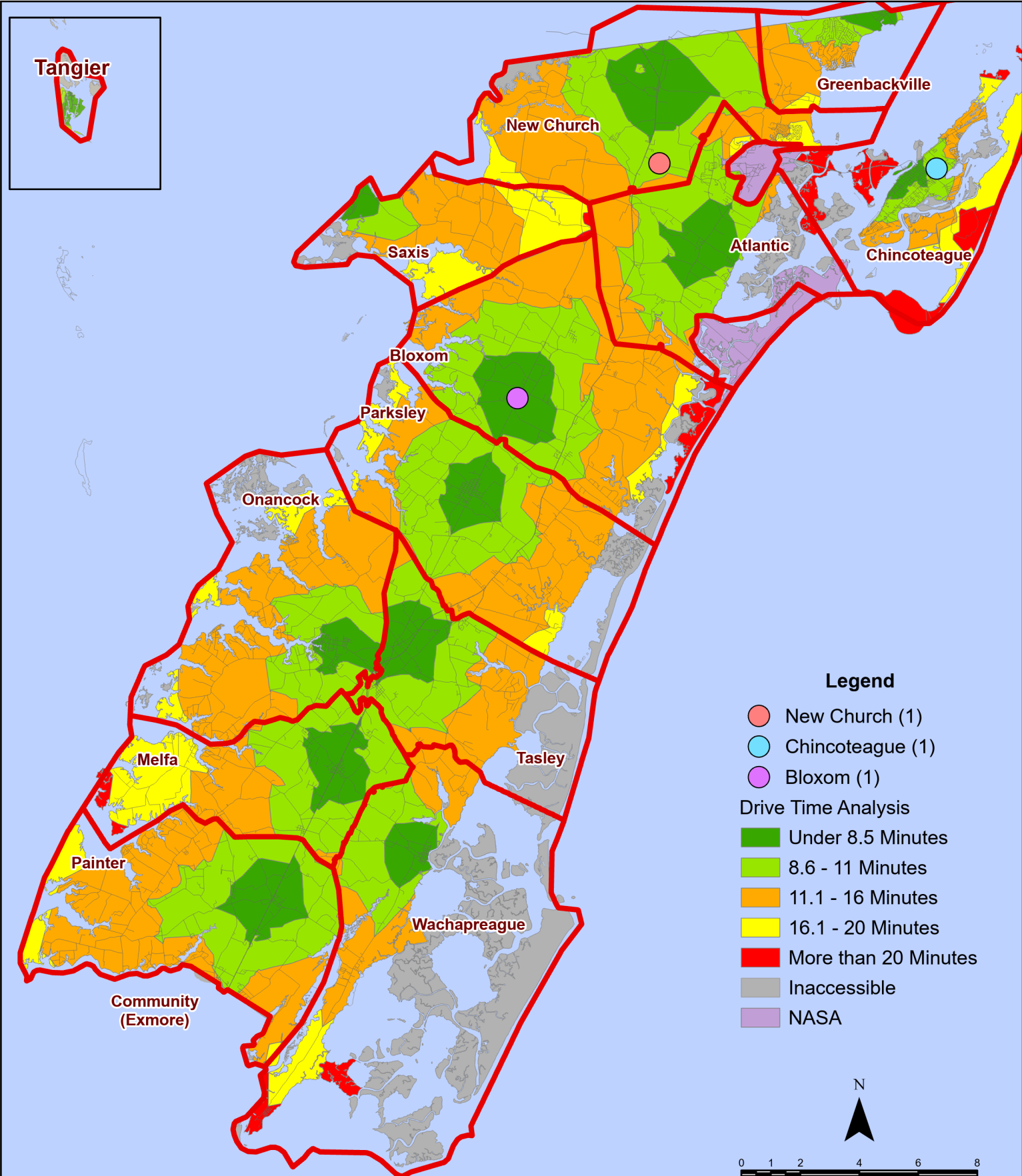
October 2025 Fire Calls By District



All points are plotted using X and Y coordinates provided by the ESVA 911 Center. Points may be plotted over one another when they are in close proximity.

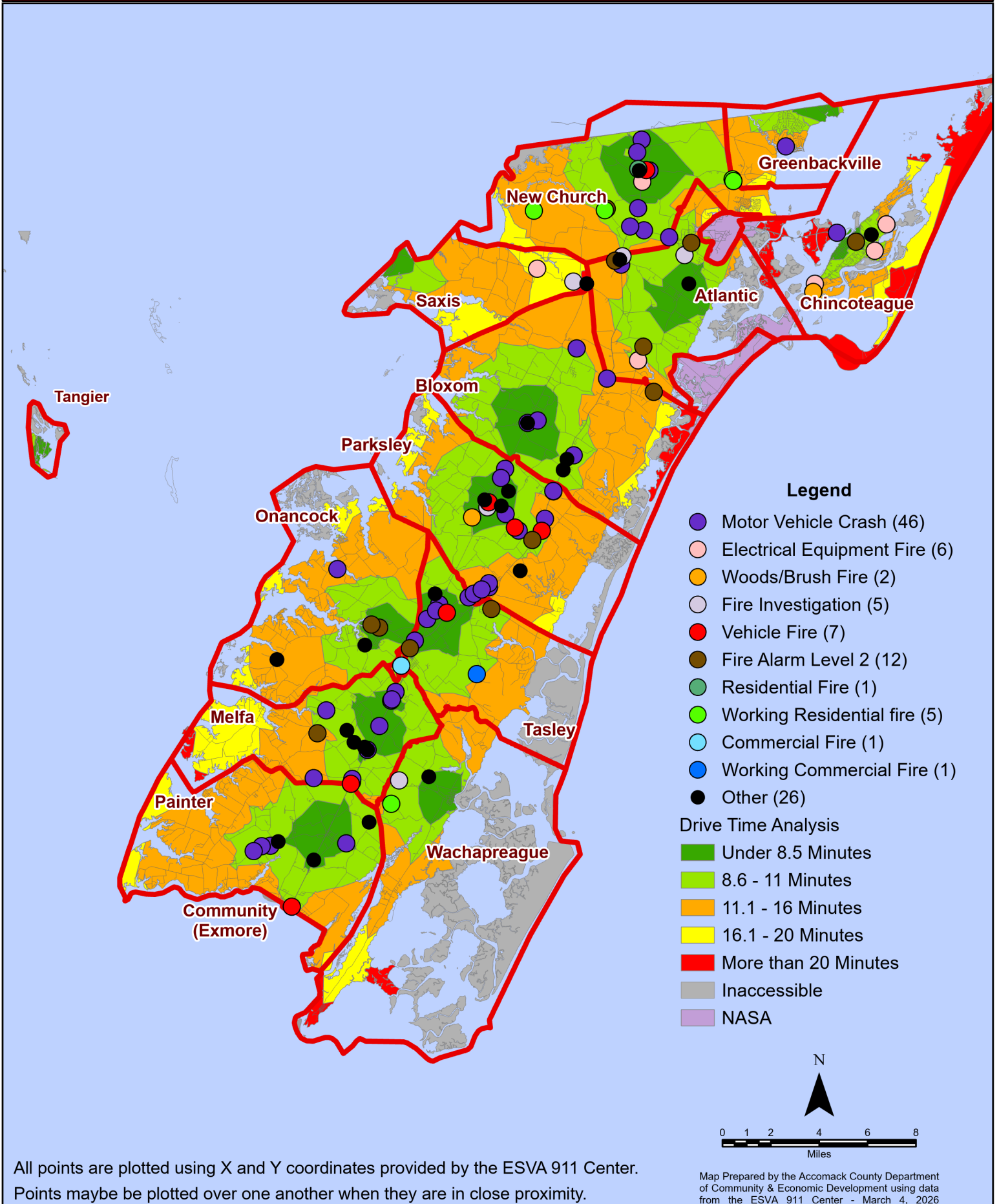
Map Prepared by the Accomack County Department of Community & Economic Development using data from the ESVA 911 Center - March 4, 2026

October 2025 Fire Calls With Response Time Greater Than 20 Mins.



All points are plotted using X and Y coordinates provided by the ESVA 911 Center. Points may be plotted over one another when they are in close proximity.

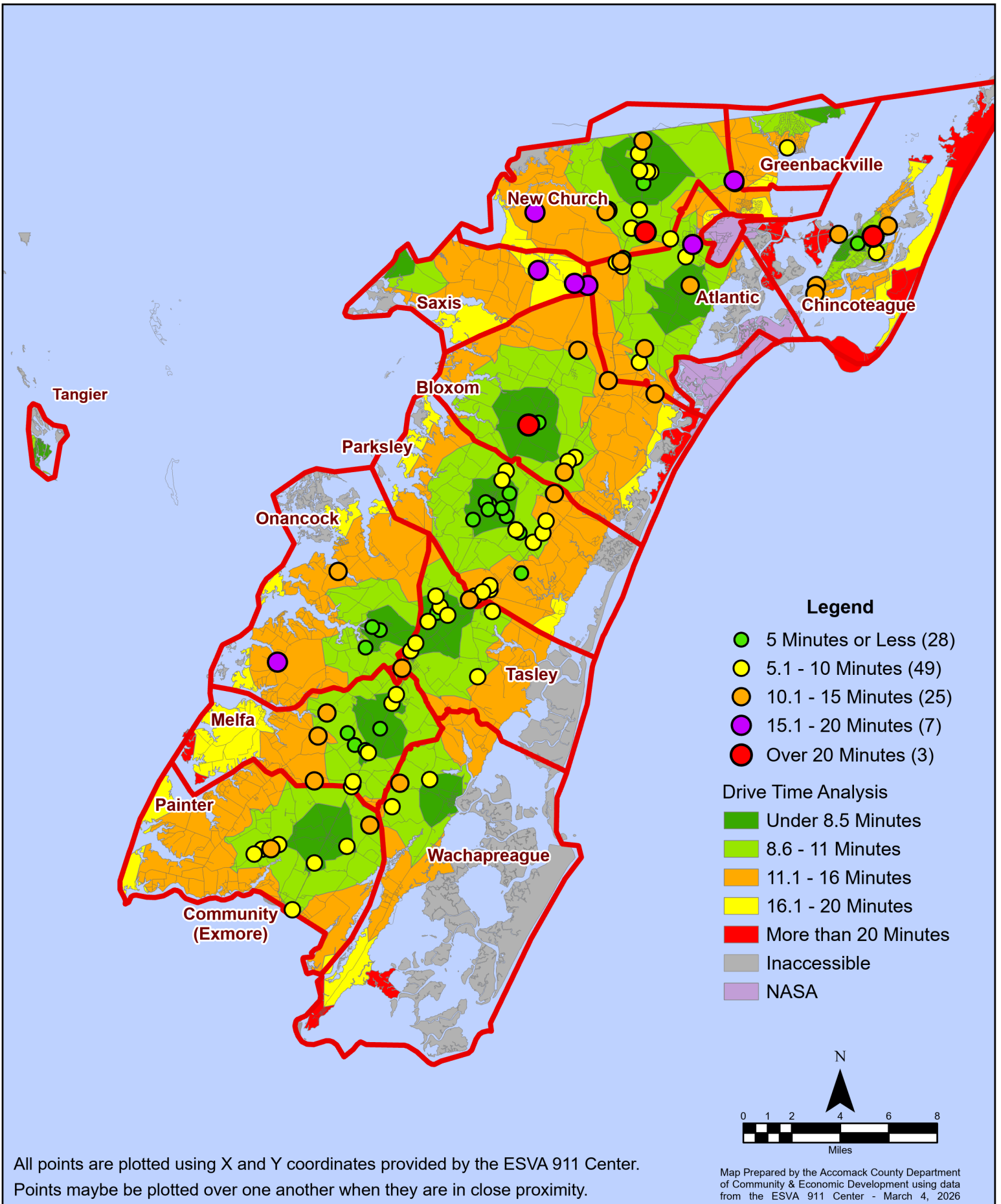
October 2025 Fire Calls By Type



All points are plotted using X and Y coordinates provided by the ESVA 911 Center. Points may be plotted over one another when they are in close proximity.

Map Prepared by the Accomack County Department of Community & Economic Development using data from the ESVA 911 Center - March 4, 2026

October 2025 Fire Calls By Response Time

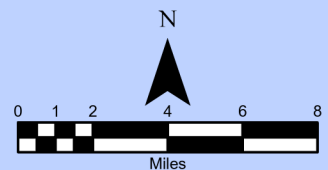


Legend

- 5 Minutes or Less (28)
- 5.1 - 10 Minutes (49)
- 10.1 - 15 Minutes (25)
- 15.1 - 20 Minutes (7)
- Over 20 Minutes (3)

Drive Time Analysis

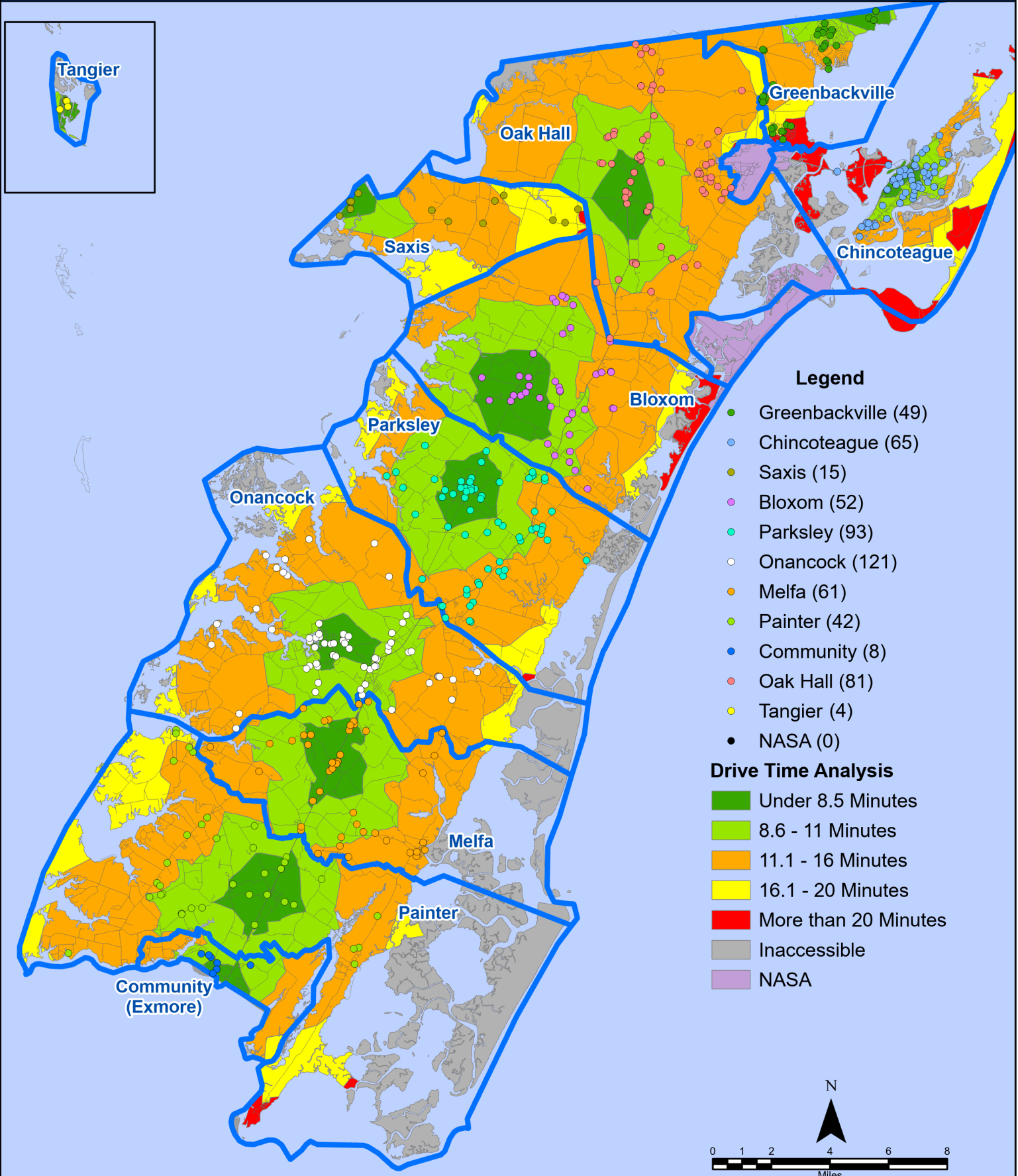
- Under 8.5 Minutes
- 8.6 - 11 Minutes
- 11.1 - 16 Minutes
- 16.1 - 20 Minutes
- More than 20 Minutes
- Inaccessible
- NASA



All points are plotted using X and Y coordinates provided by the ESVA 911 Center. Points may be plotted over one another when they are in close proximity.

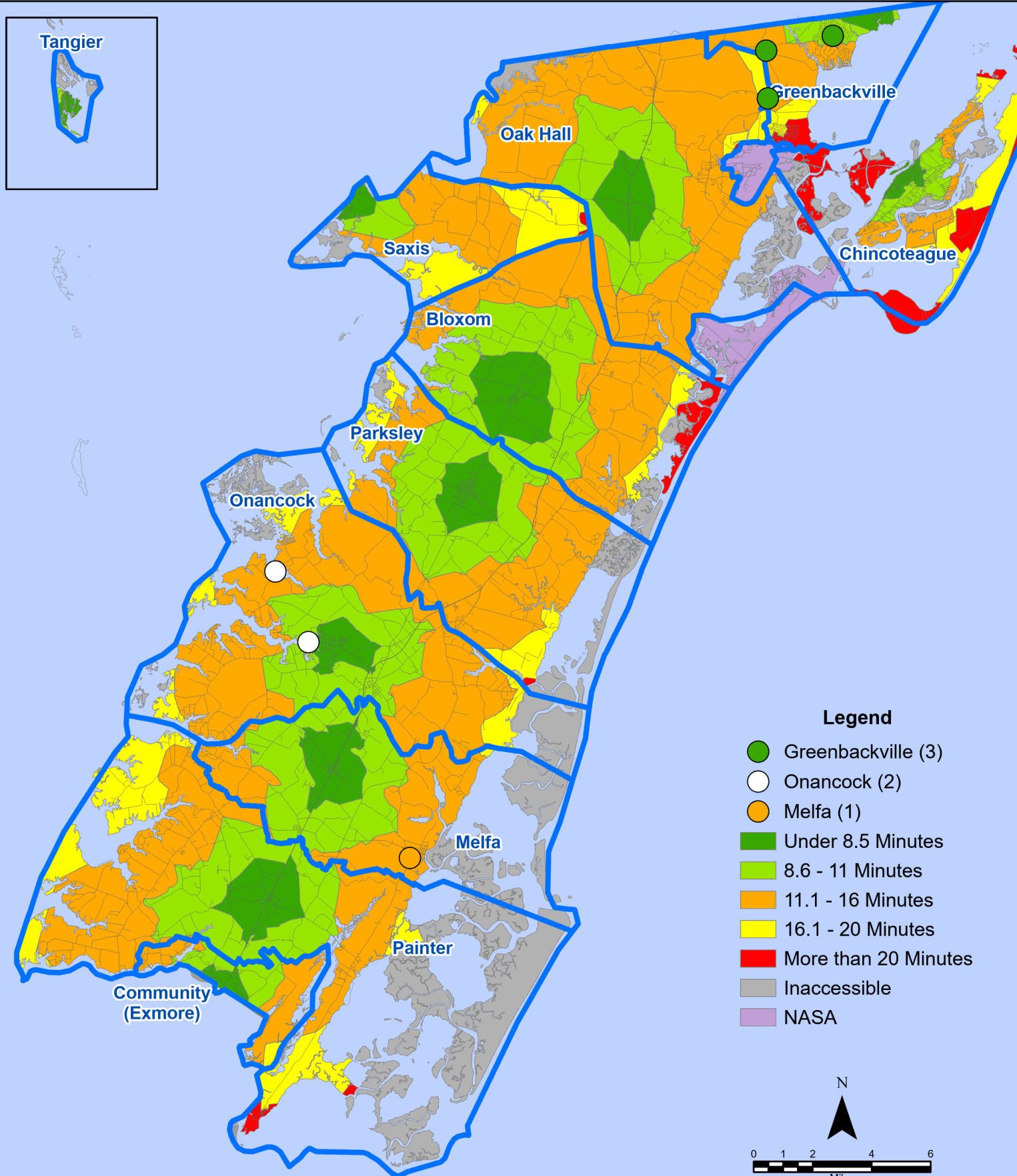
Map Prepared by the Accomack County Department of Community & Economic Development using data from the ESVA 911 Center - March 4, 2026

October 2025 EMS Calls By District



All points are plotted using X and Y coordinates provided by the ESVA 911 Center. Points may be plotted over one another when they are in close proximity.

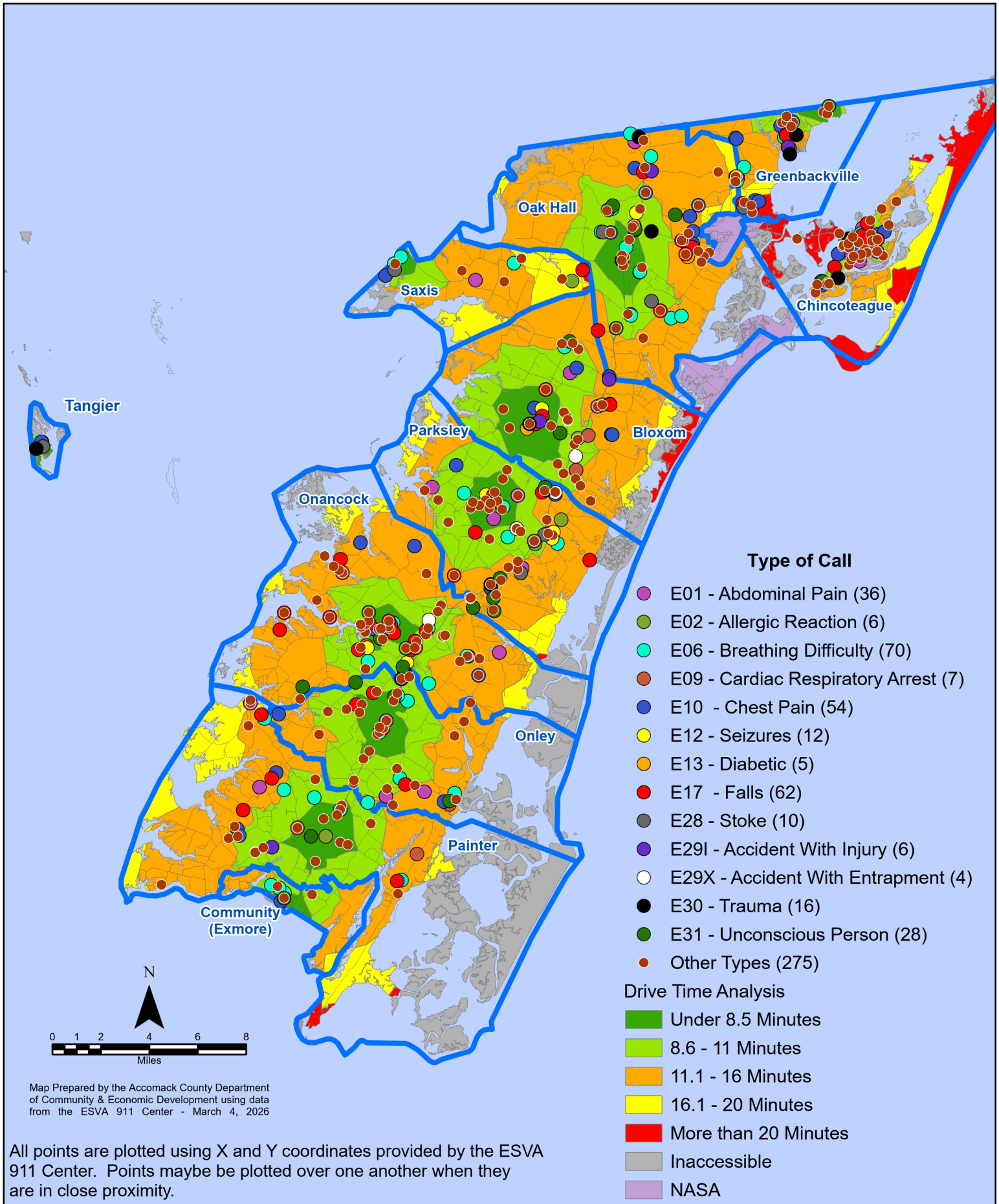
October 2025 EMS Calls With Response Time Greater Than 20 Mins.



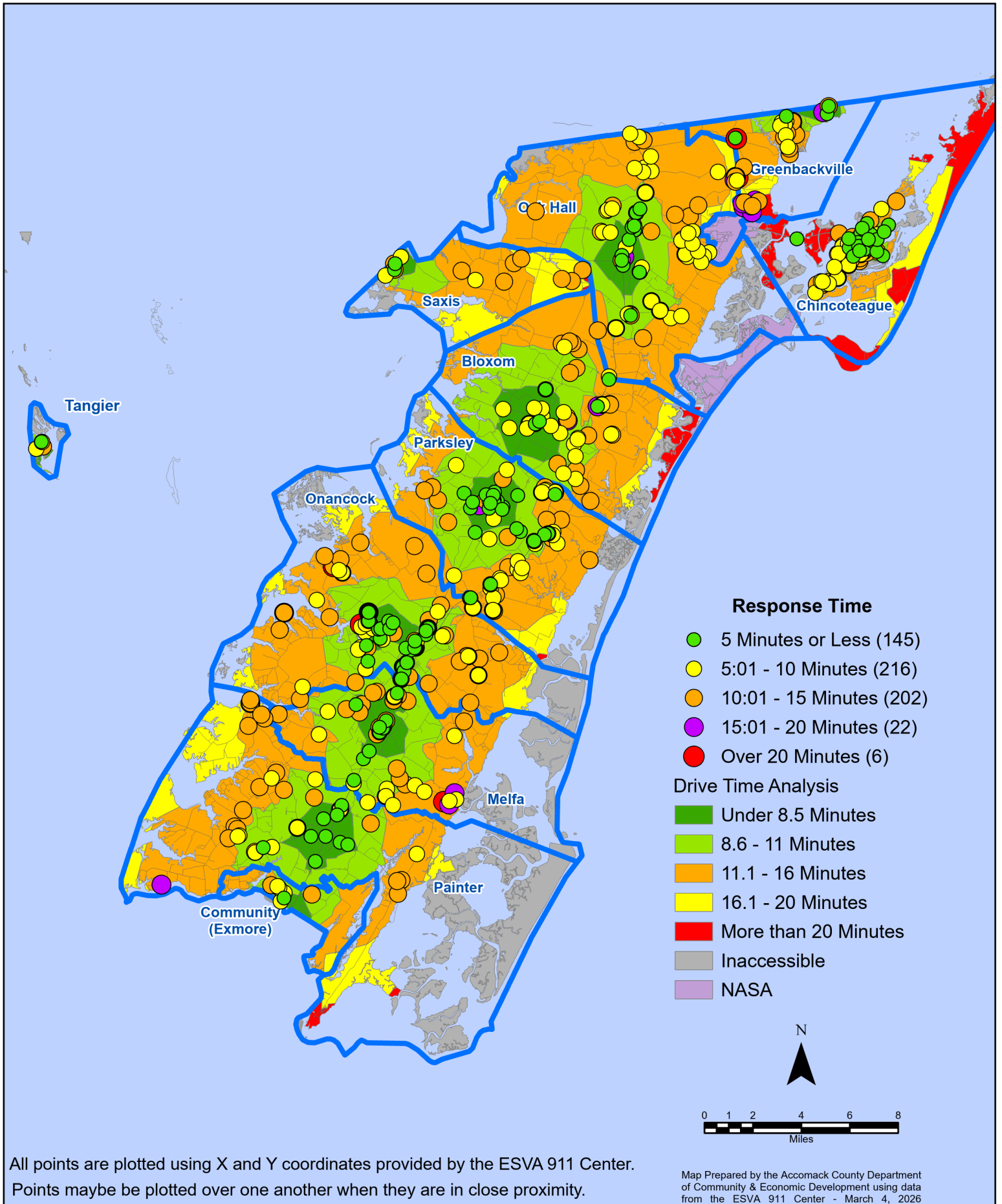
All points are plotted using X and Y coordinates provided by the ESVA 911 Center. Points may be plotted over one another when they are in close proximity.

Map Prepared by the Accomack County Department of Community & Economic Development using data from the ESVA 911 Center - March 4, 2026

October 2025 EMS Calls By Type



October 2025 EMS Calls By Response Time



October 2025 EMS Calls By Prime Unit

