

September 2025

Fire - Performance Measure Data *					
Response District	Total Calls in District	Greater than 20 min. Response Time	Longest Response Time	Calls Handled by other agency	Overall Station Benchmark %
New Church	8	0	0:12:05	0	100.0%
Greenbackville	2	0	0:09:02	0	100.0%
Chincoteague	1	0	0:07:07	0	100.0%
Atlantic	6	0	0:11:33	1	100.0%
Saxis	1	0	0:12:32	0	100.0%
Bloxom	10	0	0:13:52	2	100.0%
Parksley	11	0	0:10:08	0	100.0%
Tasley	9	0	0:13:02	1	100.0%
Onancock	7	0	0:07:45	1	100.0%
Melfa	6	0	0:12:23	3	100.0%
Wachapreague	0	0	0	0	#DIV/0!
Painter	4	0	0:11:36	0	100.0%
Tangier	0	0	0	0	#DIV/0!
System Totals	65	0	0:13:52	8	100.0%

EMS - Performance Measure Data						
Response District	Total Calls in District	Greater than 20 min. Response Time	Longest Response Time	Calls Handled by other agency	Station Benchmark Compliance %	Overall Station Reliability %
Greenbackville	45	0	0:19:52	1	100.0%	97.8%
Chincoteague	70	0	0:12:22	1	100.0%	98.6%
Saxis	15	0	0:17:04	5	100.0%	66.7%
Bloxom	48	1	0:35:02	43	97.9%	10.4%
Parksley	94	0	0:13:08	1	100.0%	98.9%
Onancock	119	1	0:22:40	6	99.2%	95.0%
Melfa	39	0	0:15:49	17	100.0%	56.4%
Painter	41	0	0:19:49	1	100.0%	97.6%
Oak Hall	97	1	0:20:45	4	99.0%	95.9%
Tangier	9	0	0:09:33	0	100.0%	100.0%
Community (Exmore)	6	0	0:11:16	3	100.0%	50.0%
System Totals	583	3	0:35:02	82	99.5%	85.9%

EMS Mutual Aid Data															
Station Receiving Aid	Station Giving Aid														
	Greenbackville	Chincoteague	Saxis	Bloxom	Parksley	Onancock	Melfa	Painter	Oak Hall	Community (Exmore)	Northampton	Wallops	NORS	2nd Call	3rd Call
Greenbackville									1					1	
Chincoteague									1					1	
Saxis									5				4	1	
Bloxom					38				5				43		
Parksley						1								1	
Onancock					4			2						5	1
Melfa						8		9					16	1	
Painter							1							1	
Oak Hall	1	2		1									2		2
Community (Exmore)								3					3		
Northampton Co.															
Wallops															
Totals	1	2	0	0	43	9	1	14	12	0	0	0	68	11	3

Transport Destination			
Hospital Destination by Unit	Riverside - Shore Memorial	PRMC / Tidal Health	Other
Chincoteague	21	19	0
Saxis	8	3	0
Bloxom	1	0	0
Parksley	92	2	0
Onancock	82	0	1
Melfa	21	0	2
Painter	47	0	0
Oak Hall	40	21	0
Wallops	0	0	0
Totals	330	60	3

Benchmark = The Accomack County Board of Supervisors established a 20 minute standard for emergency response.

NORS = No Response by station or the call was handled by another station or agency.

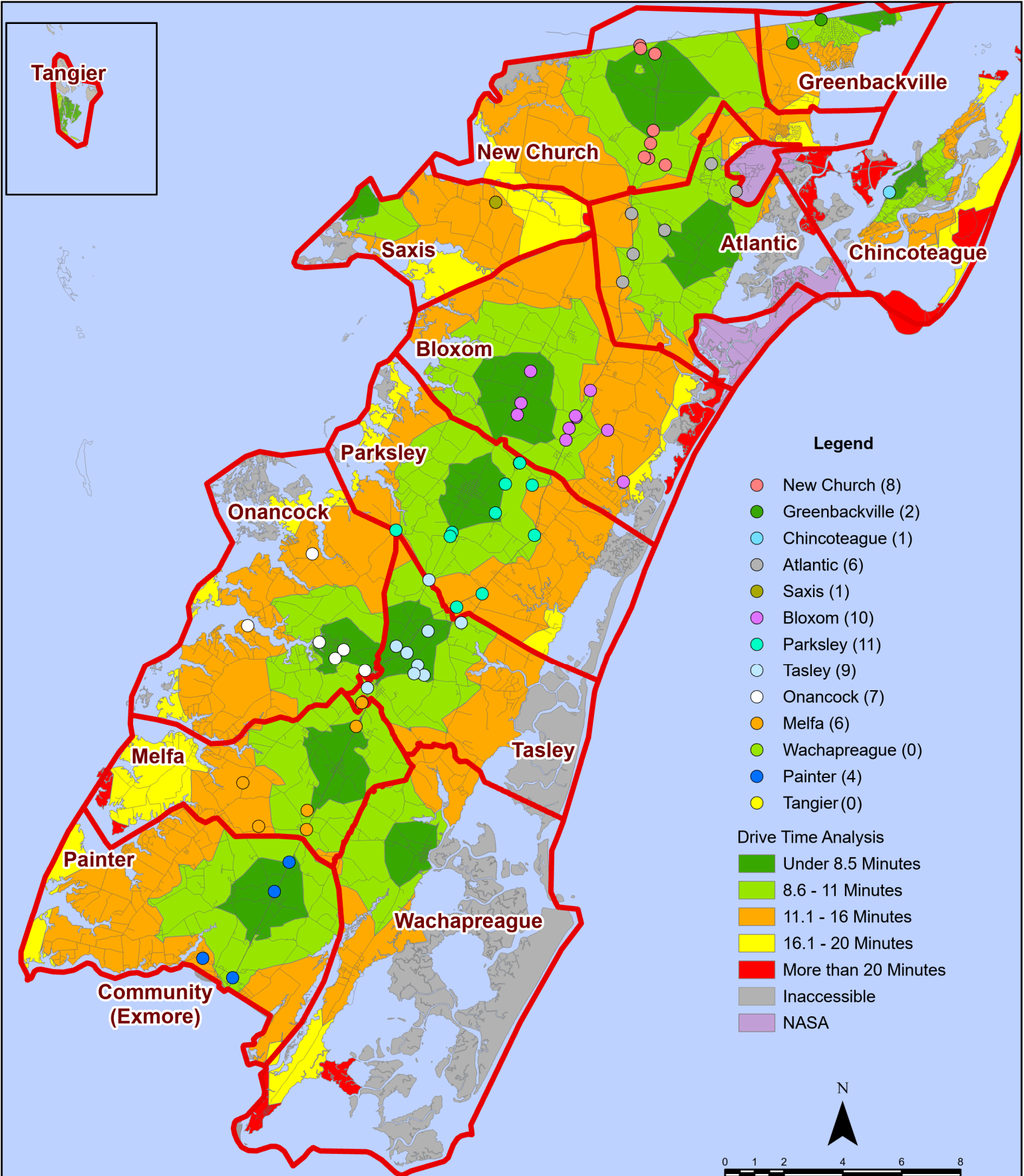
2nd Call = 2nd ambulance call received while first ambulance was on another call.

3rd Call = 3rd ambulance call received while first & second ambulances were on other calls.

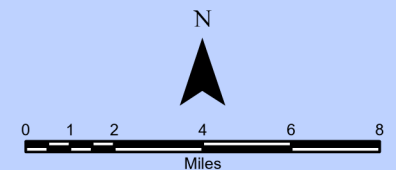
* This data excludes F1 Med (Medical Assist) calls in the Fire Data.

This information was prepared using data supplied by the Eastern Shore of Virginia 911 Center. This information is original incident data only and may not be representative of all units and/or stations who responded to an incident.

September 2025 Fire Calls By District

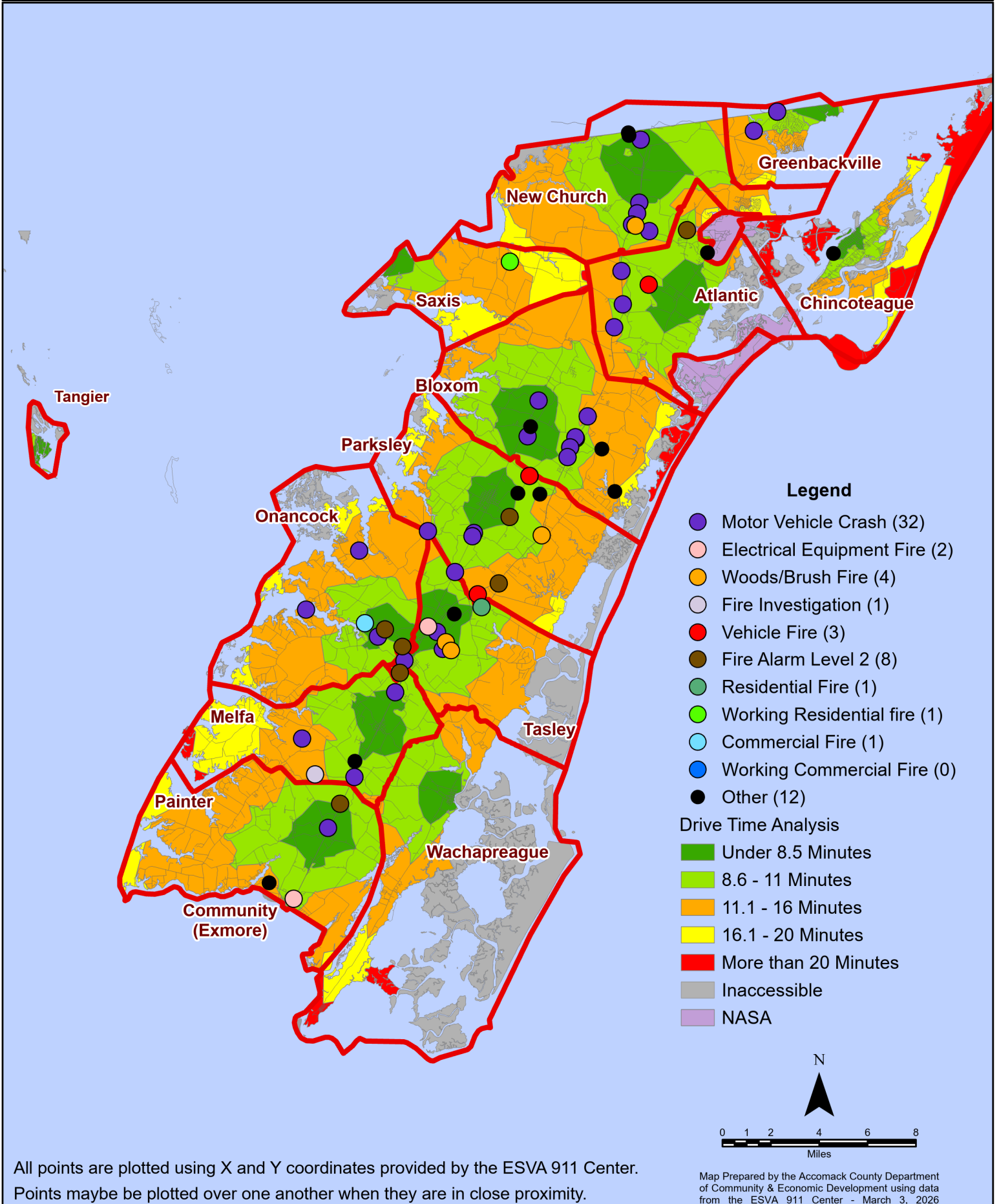


All points are plotted using X and Y coordinates provided by the ESVA 911 Center. Points may be plotted over one another when they are in close proximity.



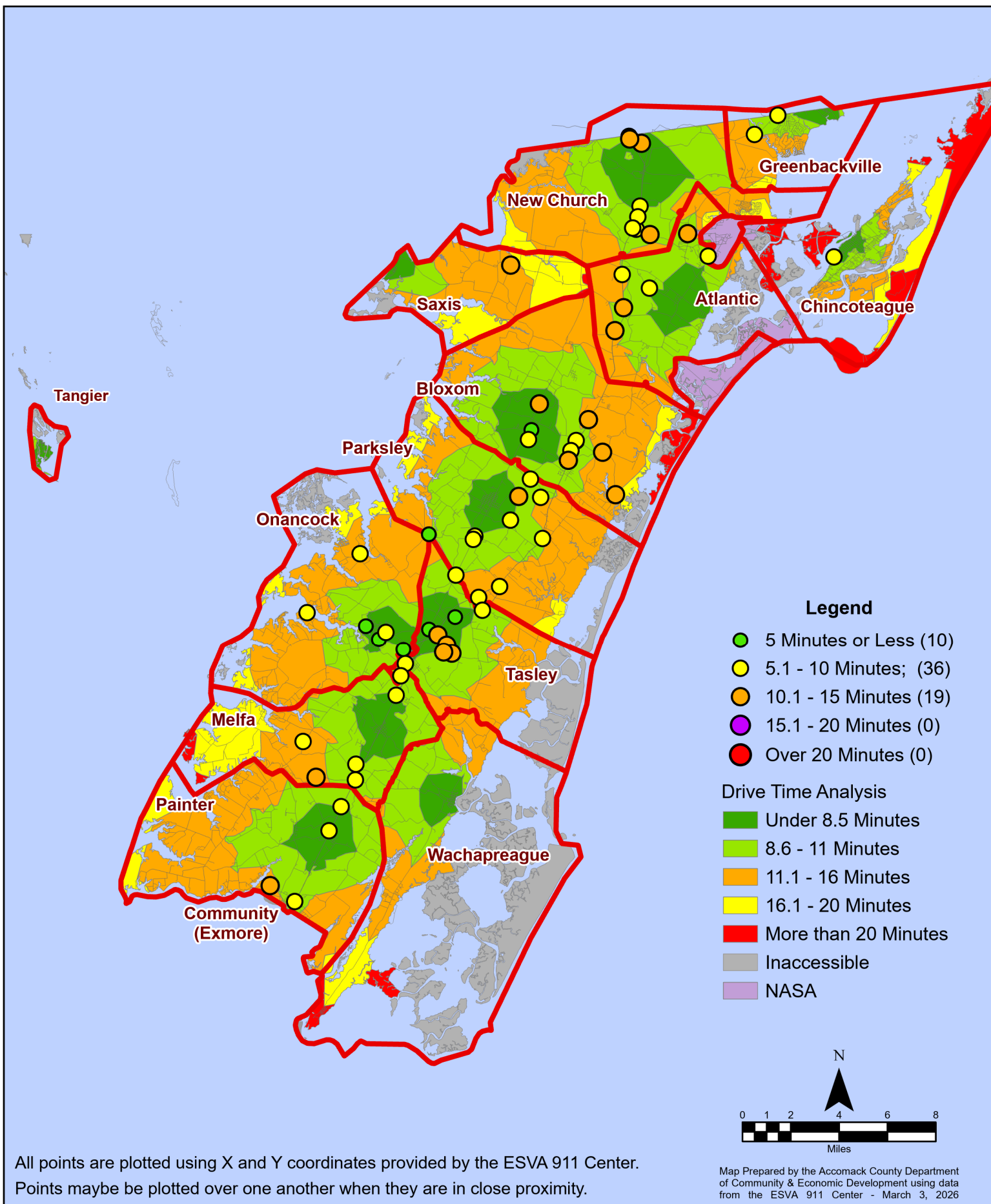
Map Prepared by the Accomack County Department of Community & Economic Development using data from the ESVA 911 Center - March 3, 2026

September 2025 Fire Calls By Type



All points are plotted using X and Y coordinates provided by the ESVA 911 Center. Points may be plotted over one another when they are in close proximity.

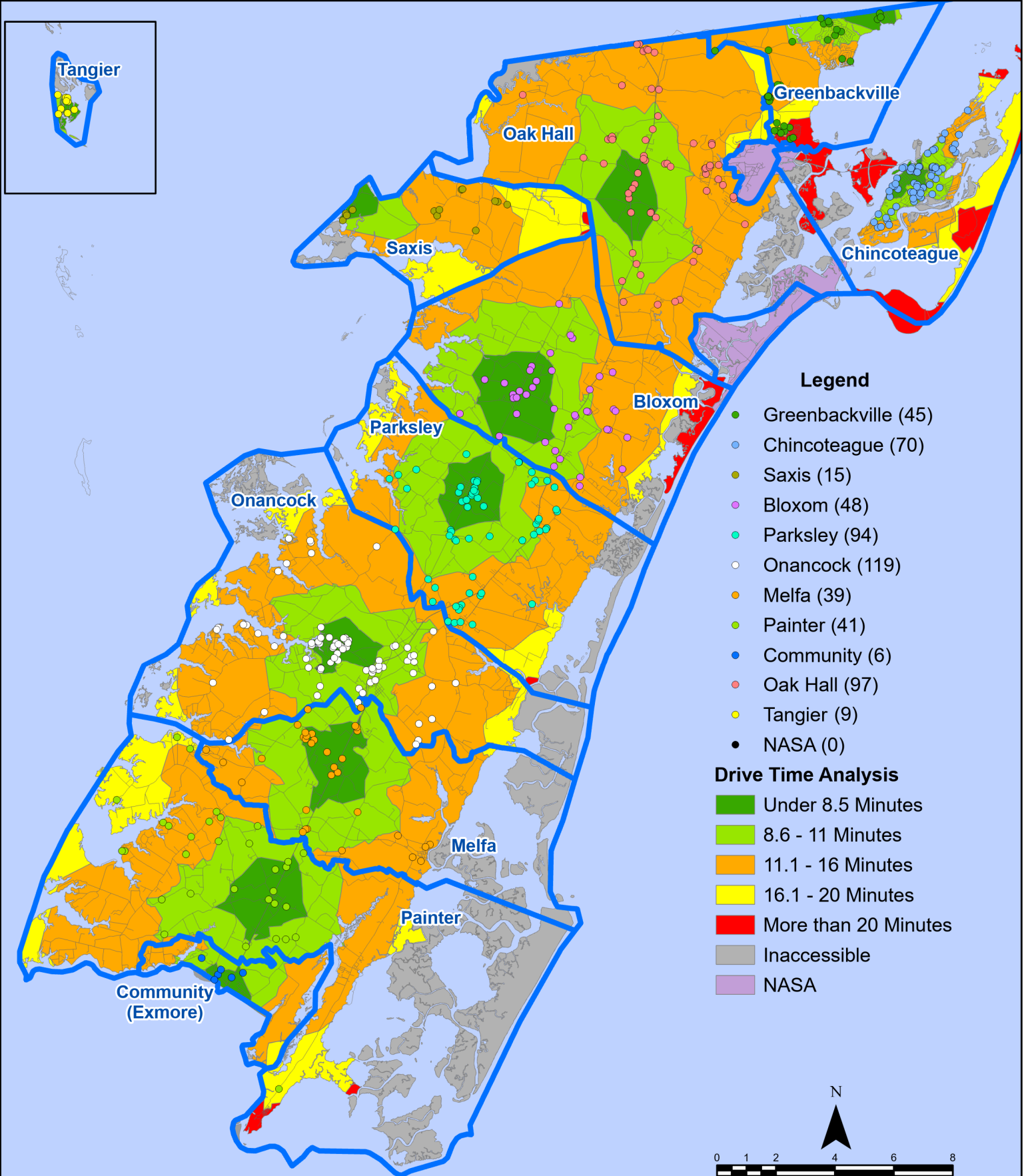
September 2025 Fire Calls By Response Time



All points are plotted using X and Y coordinates provided by the ESVA 911 Center. Points may be plotted over one another when they are in close proximity.

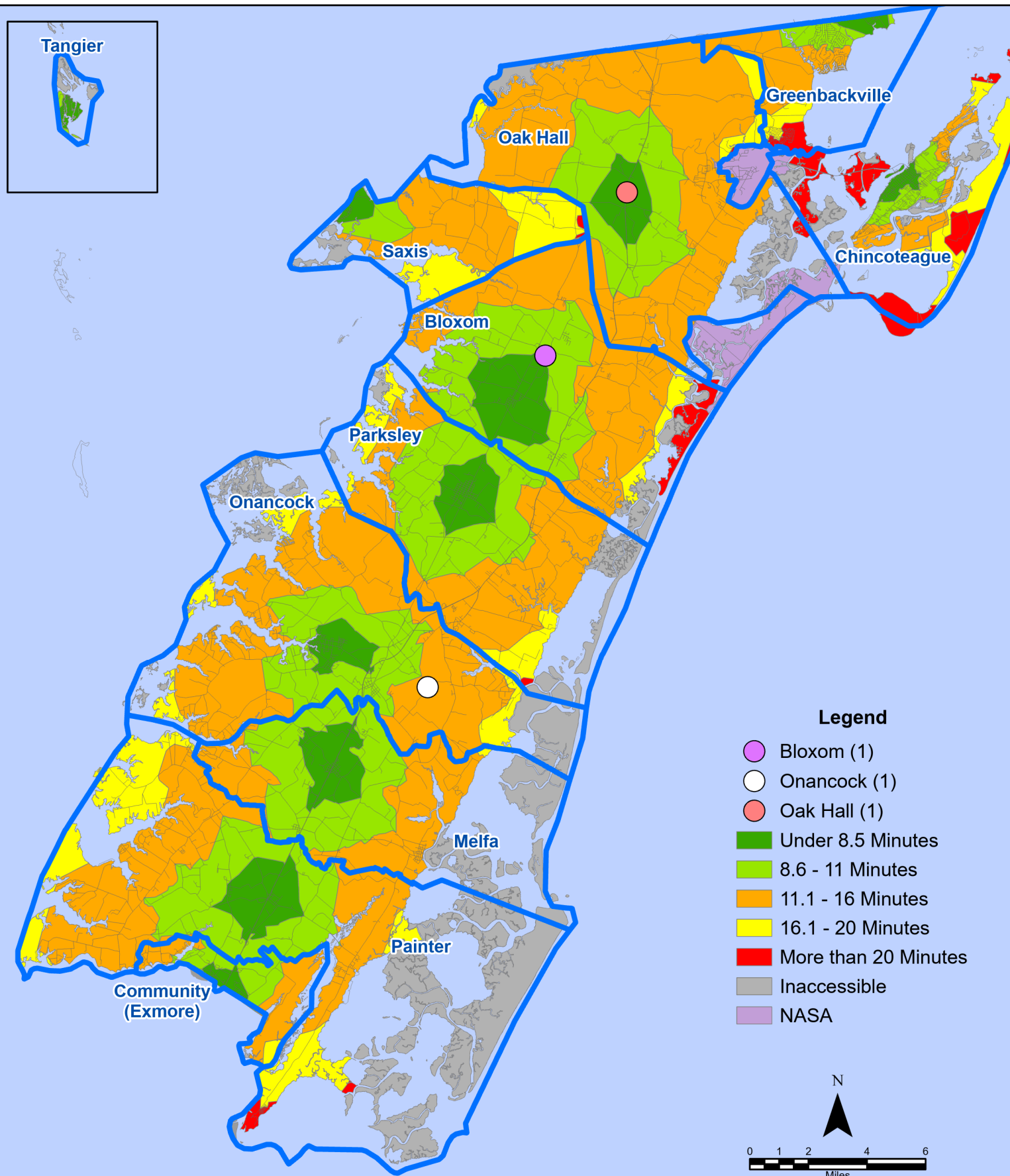
Map Prepared by the Accomack County Department of Community & Economic Development using data from the ESVA 911 Center - March 3, 2026

September 2025 EMS Calls By District



All points are plotted using X and Y coordinates provided by the ESVA 911 Center. Points may be plotted over one another when they are in close proximity.

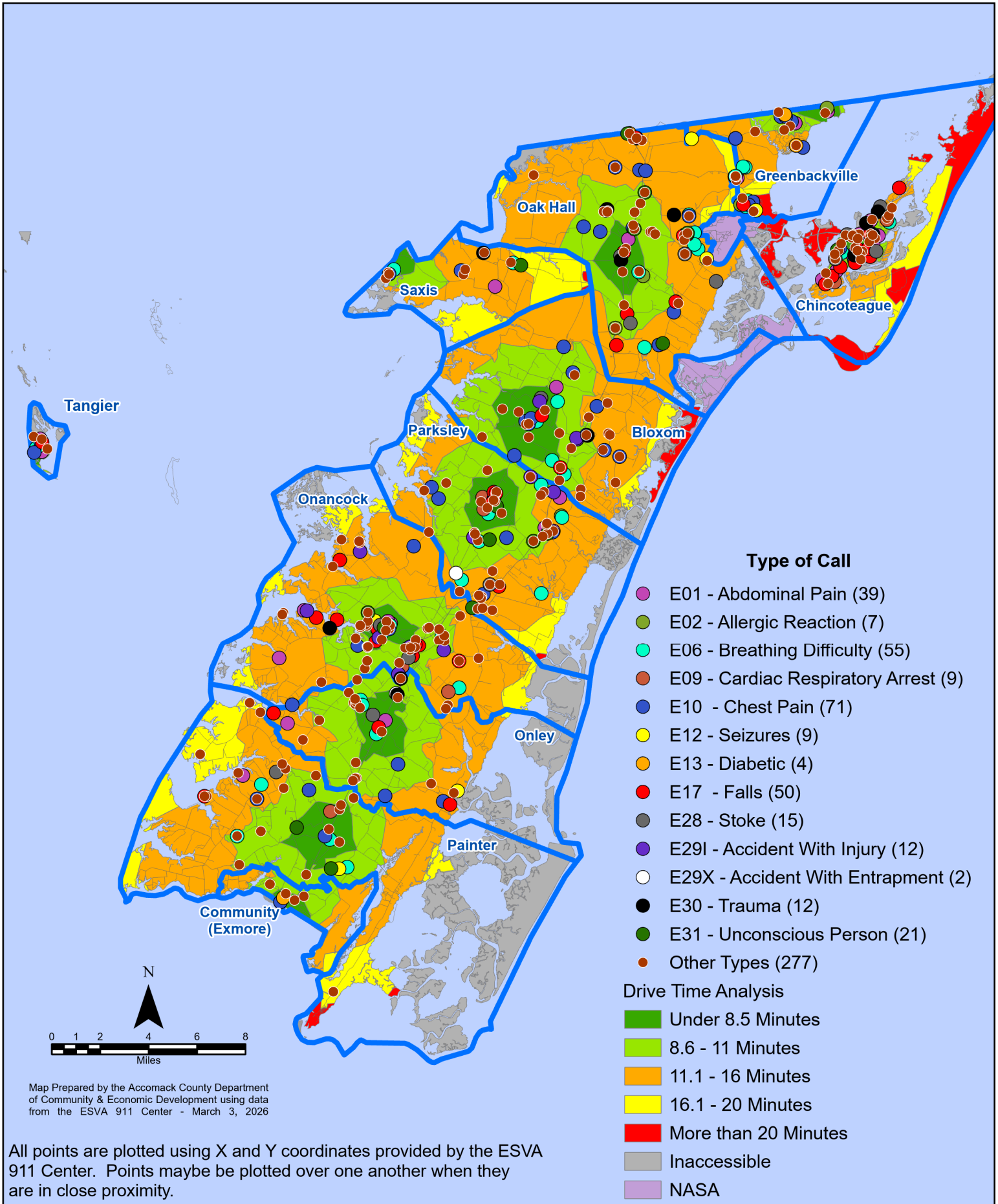
September 2025 EMS Calls With Response Time Greater Than 20 Mins.



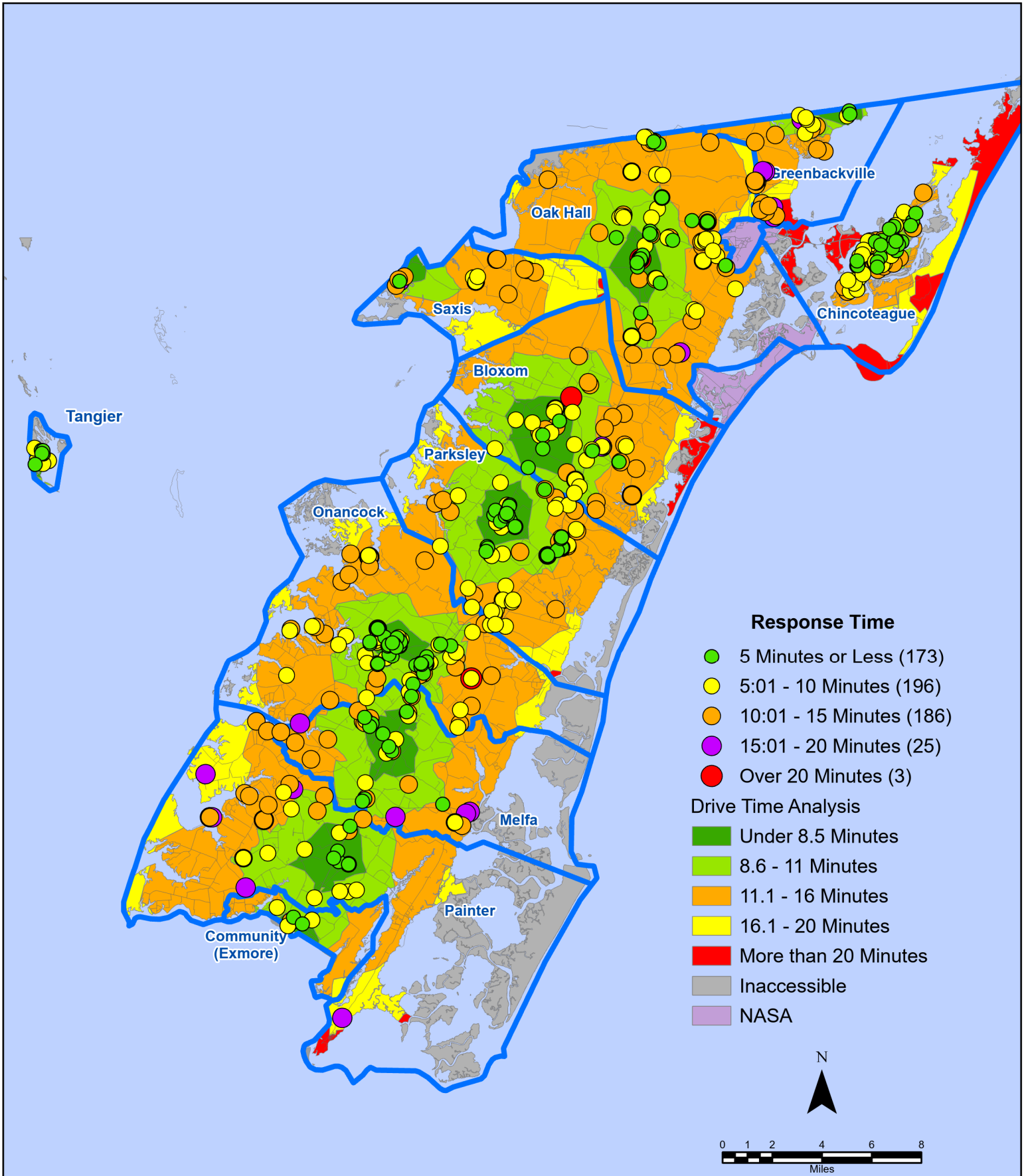
All points are plotted using X and Y coordinates provided by the ESVA 911 Center. Points may be plotted over one another when they are in close proximity.

Map Prepared by the Accomack County Department of Community & Economic Development using data from the ESVA 911 Center - March 3, 2026

September 2025 EMS Calls By Type



September 2025 EMS Calls By Response Time



All points are plotted using X and Y coordinates provided by the ESVA 911 Center. Points may be plotted over one another when they are in close proximity.

Map Prepared by the Accomack County Department of Community & Economic Development using data from the ESVA 911 Center - March 3, 2026

September 2025 EMS Calls By Prime Unit

