

# August 2025

Fire - Performance Measure Data *					
Response District	Total Calls in District	Greater than 20 min. Response Time	Longest Response Time	Calls Handled by other agency	Overall Station Benchmark %
New Church	7	0	0:14:32	2	100.0%
Greenbackville	0	0	0	0	#DIV/0!
Chincoteague	5	0	0:16:30	1	100.0%
Atlantic	2	0	0:11:18	0	100.0%
Saxis	2	0	0:19:24	0	100.0%
Bloxom	7	0	0:13:11	1	100.0%
Parksley	16	0	0:11:22	1	100.0%
Tasley	12	1	0:26:51	1	91.7%
Onancock	12	0	0:14:01	2	100.0%
Melfa	10	0	0:15:42	7	100.0%
Wachapreague	2	0	0:09:43	0	100.0%
Painter	4	0	0:07:15	0	100.0%
Tangier	0	0	0	0	#DIV/0!
<b>System Totals</b>	<b>79</b>	<b>1</b>	<b>0:26:51</b>	<b>15</b>	<b>98.7%</b>

EMS - Performance Measure Data						
Response District	Total Calls in District	Greater than 20 min. Response Time	Longest Response Time	Calls Handled by other agency	Station Benchmark Compliance %	Overall Station Reliability %
Greenbackville	57	4	0:22:56	9	93.0%	84.2%
Chincoteague	100	1	0:33:02	2	99.0%	98.0%
Saxis	8	0	0:13:34	2	100.0%	75.0%
Bloxom	20	0	0:17:22	19	100.0%	5.0%
Parksley	97	1	0:24:23	3	99.0%	96.9%
Onancock	140	2	0:27:13	8	98.6%	94.3%
Melfa	64	0	0:14:07	41	100.0%	35.9%
Painter	30	0	0:16:47	1	100.0%	96.7%
Oak Hall	103	0	0:17:28	4	100.0%	96.1%
Tangier	13	2	0:45:44	0	84.6%	100.0%
Community (Exmore)	2	0	0:07:54	0	100.0%	100.0%
<b>System Totals</b>	<b>634</b>	<b>10</b>	<b>0:45:44</b>	<b>89</b>	<b>98.4%</b>	<b>86.0%</b>

EMS Mutual Aid Data															
	Station Giving Aid														
	Greenbackville	Chincoteague	Saxis	Bloxom	Parksley	Onancock	Melfa	Painter	Oak Hall	Community (Exmore)	Northampton	Wallops	NORS	2nd Call	3rd Call
Greenbackville		1							8				1	7	1
Chincoteague									2				2		2
Saxis									2				2		
Bloxom					15			4					19		
Parksley						3							1	1	1
Onancock					5		2	1						7	1
Melfa						8		33					30	11	
Painter						1							1		
Oak Hall	2	2												2	2
Community (Exmore)															
Northampton Co.															
Wallops															
<b>Totals</b>	<b>2</b>	<b>3</b>	<b>0</b>	<b>0</b>	<b>20</b>	<b>12</b>	<b>2</b>	<b>34</b>	<b>16</b>	<b>0</b>	<b>0</b>	<b>0</b>	<b>54</b>	<b>28</b>	<b>7</b>

Station Receiving Aid

Transport Destination			
Hospital Destination by Unit	Riverside - Shore Memorial	PRMC / Tidal Health	Other
	Greenbackville	22	21
Chincoteague	23	27	1
Saxis	5		
Bloxom	1		
Parksley	78	2	1
Onancock	91		
Melfa	21		
Painter	42		1
Oak Hall	40	14	1
Wallops			
<b>Totals</b>	<b>323</b>	<b>64</b>	<b>6</b>

**Benchmark** = The Accomack County Board of Supervisors established a 20 minute standard for emergency response.

**NORS** = No Response by station or the call was handled by another station or agency.

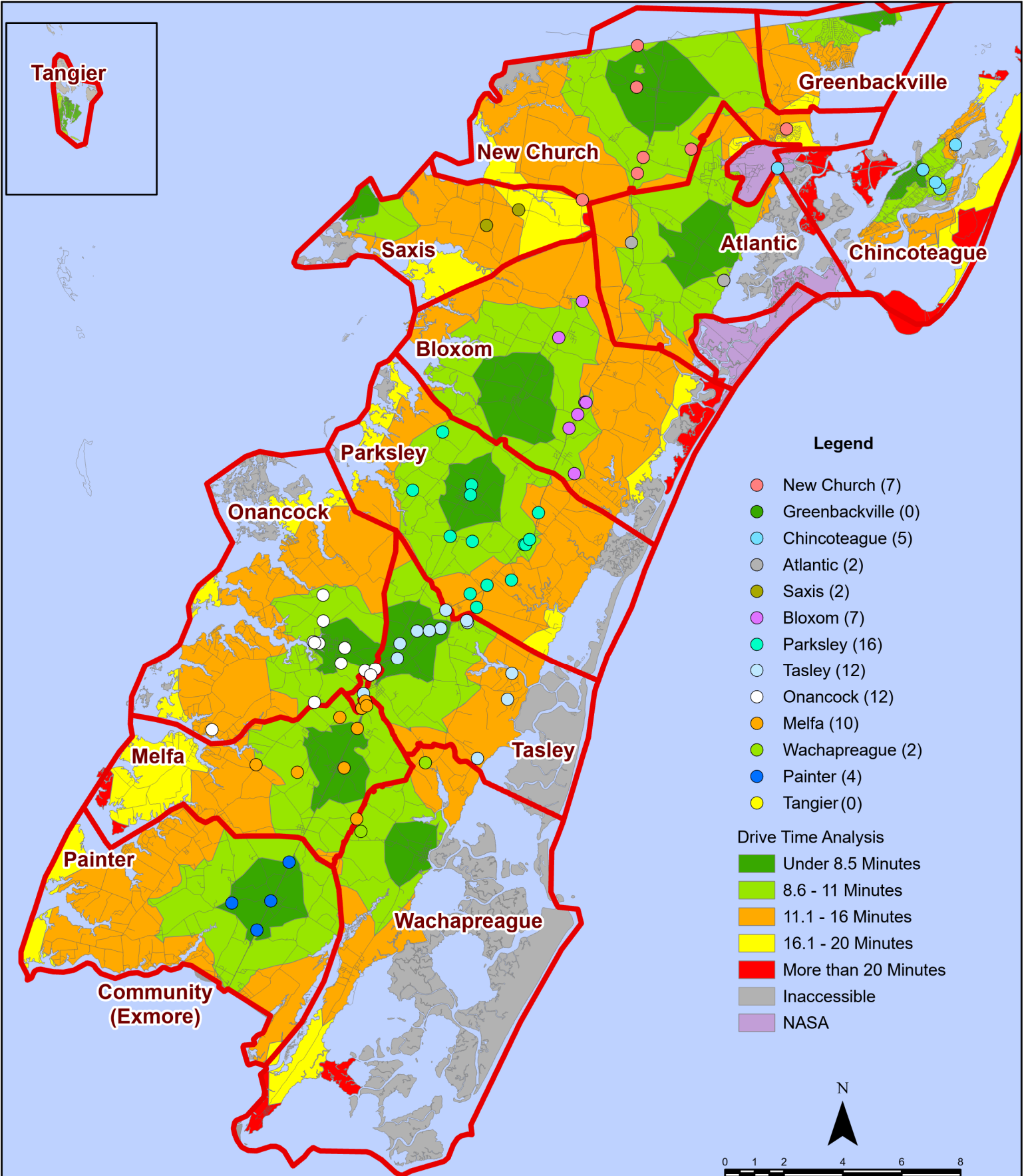
**2nd Call** = 2nd ambulance call received while first ambulance was on another call.

**3rd Call** = 3rd ambulance call received while first & second ambulances were on other calls.

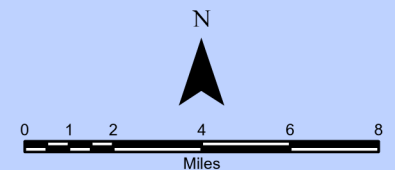
\* This data excludes F1 Med (Medical Assist) calls in the Fire Data.

*This information was prepared using data supplied by the Eastern Shore of Virginia 911 Center. This information is original incident data only and may not be representative of all units and/or stations who responded to an incident.*

# August 2025 Fire Calls By District

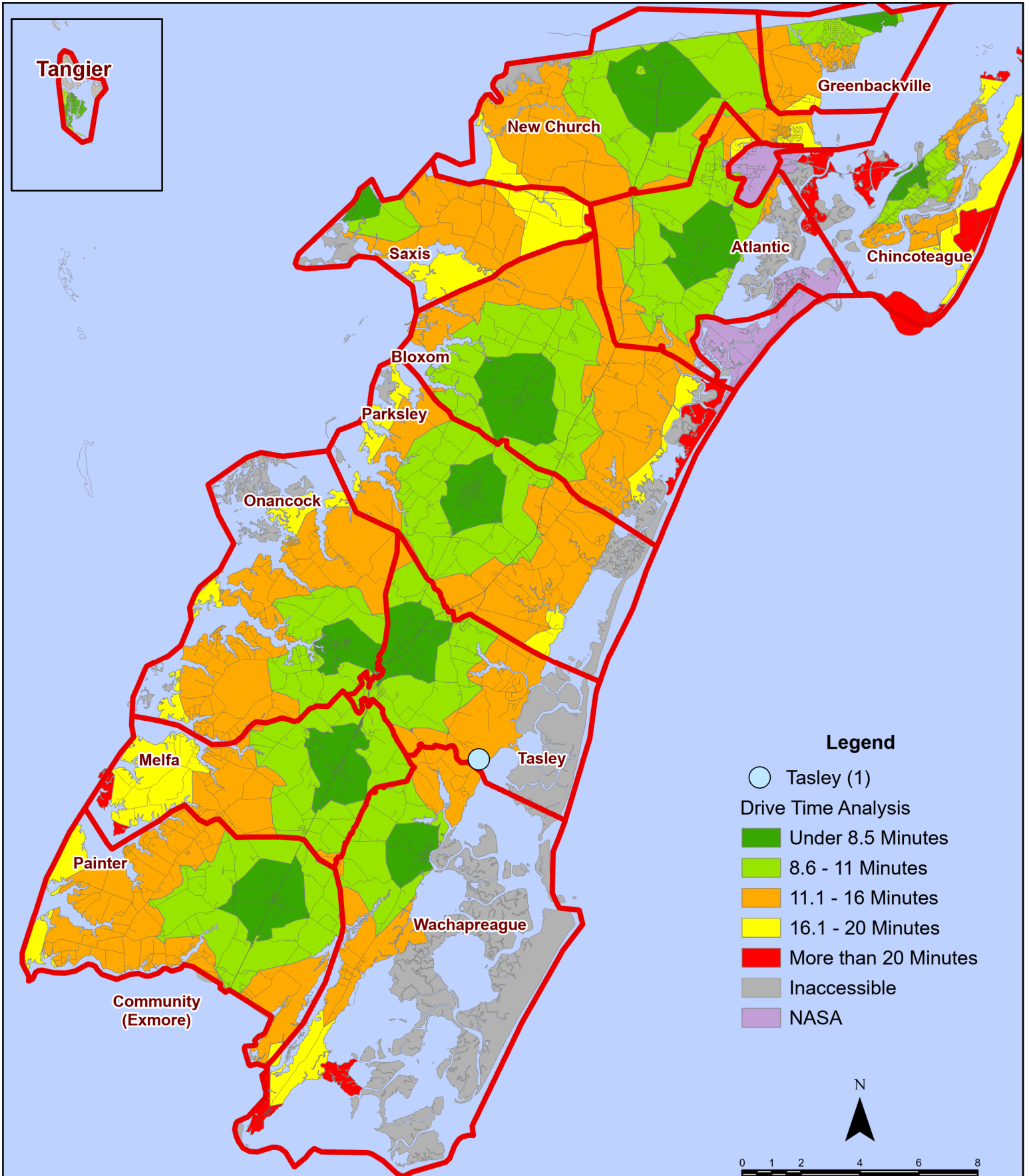


All points are plotted using X and Y coordinates provided by the ESVA 911 Center. Points may be plotted over one another when they are in close proximity.

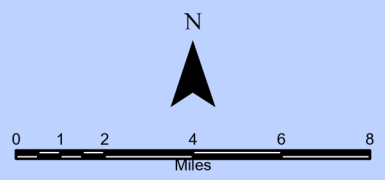


Map Prepared by the Accomack County Department of Community & Economic Development using data from the ESVA 911 Center - March 2, 2026

# August 2025 Fire Calls With Response Time Greater Than 20 Mins.

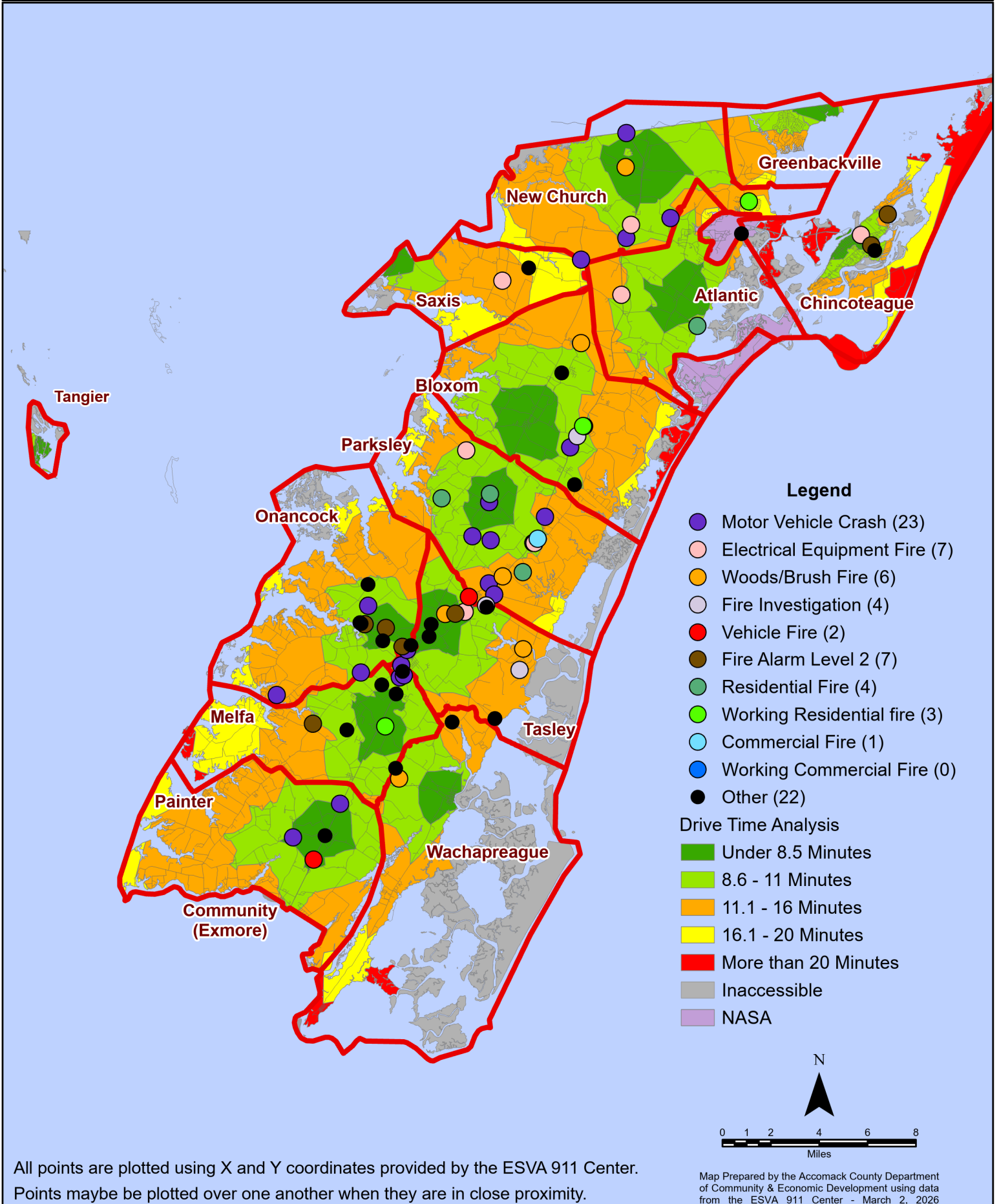


All points are plotted using X and Y coordinates provided by the ESVA 911 Center. Points may be plotted over one another when they are in close proximity.

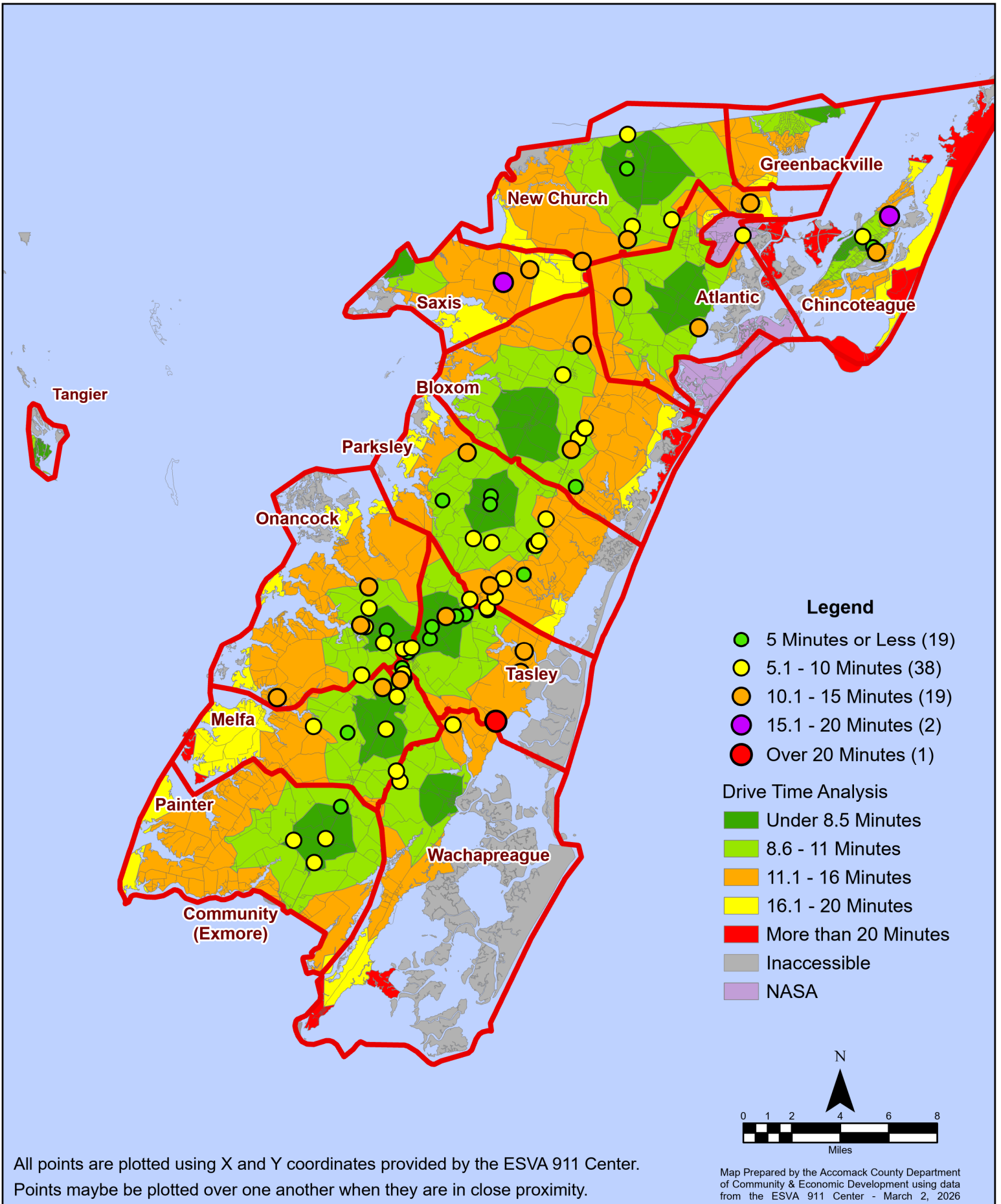


Map Prepared by the Accomack County Department of Community & Economic Development using data from the ESVA 911 Center - March 2, 2026

# August 2025 Fire Calls By Type



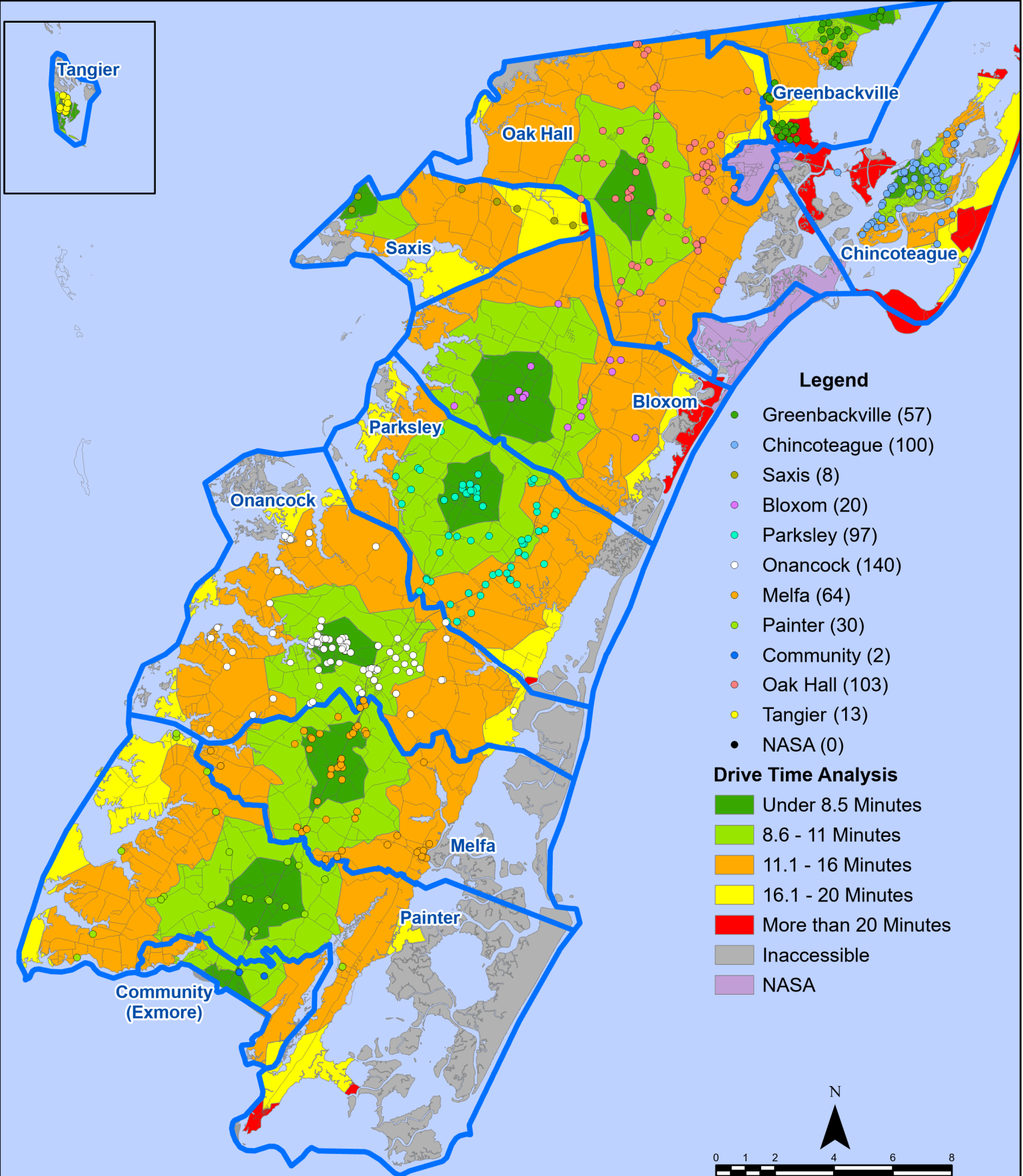
# August 2025 Fire Calls By Response Time



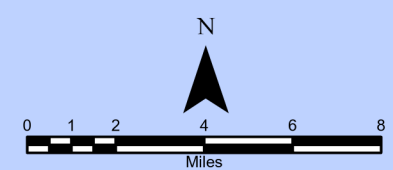
All points are plotted using X and Y coordinates provided by the ESVA 911 Center. Points may be plotted over one another when they are in close proximity.

Map Prepared by the Accomack County Department of Community & Economic Development using data from the ESVA 911 Center - March 2, 2026

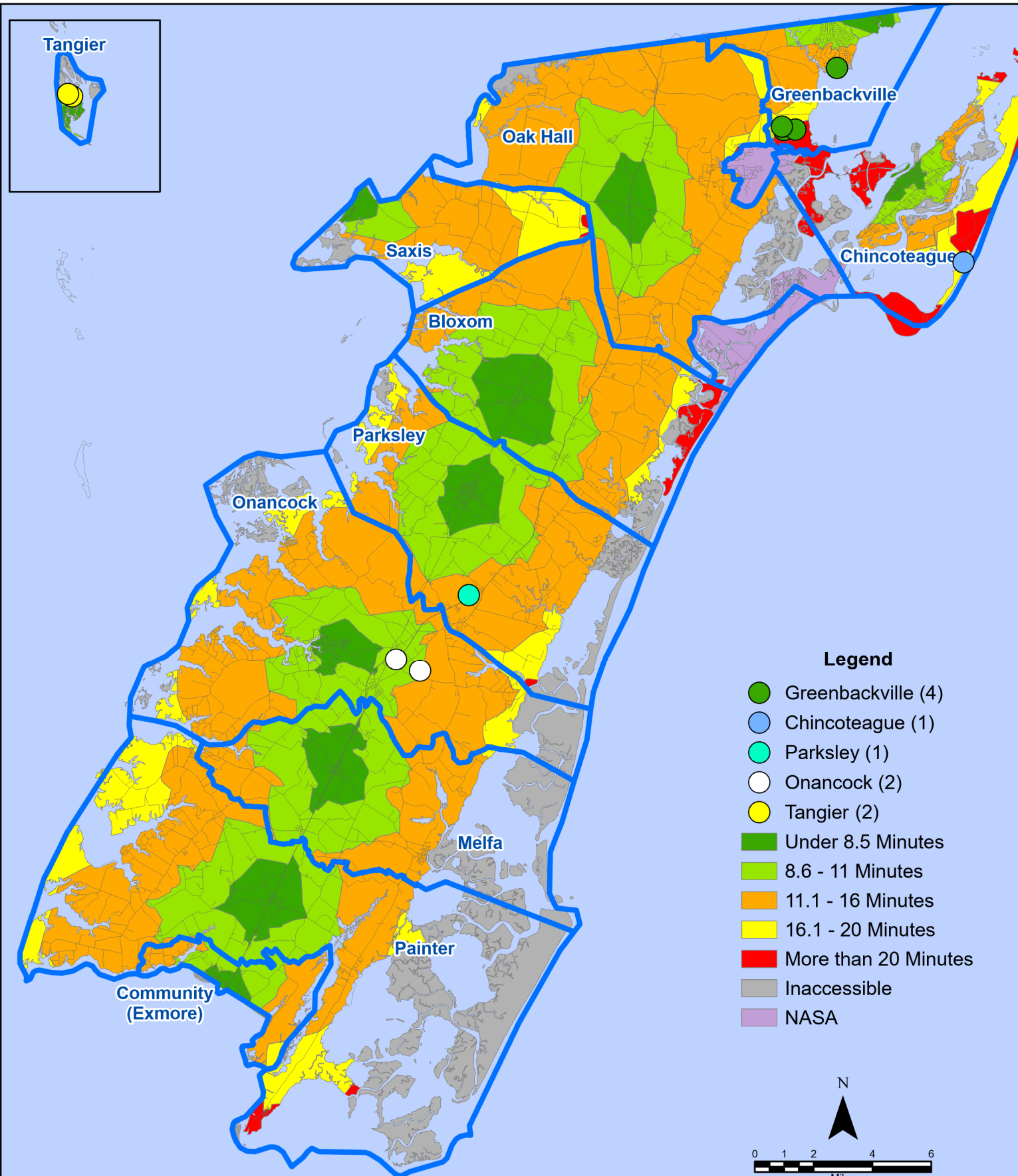
# August 2025 EMS Calls By District



All points are plotted using X and Y coordinates provided by the ESVA 911 Center.  
 Points may be plotted over one another when they are in close proximity.

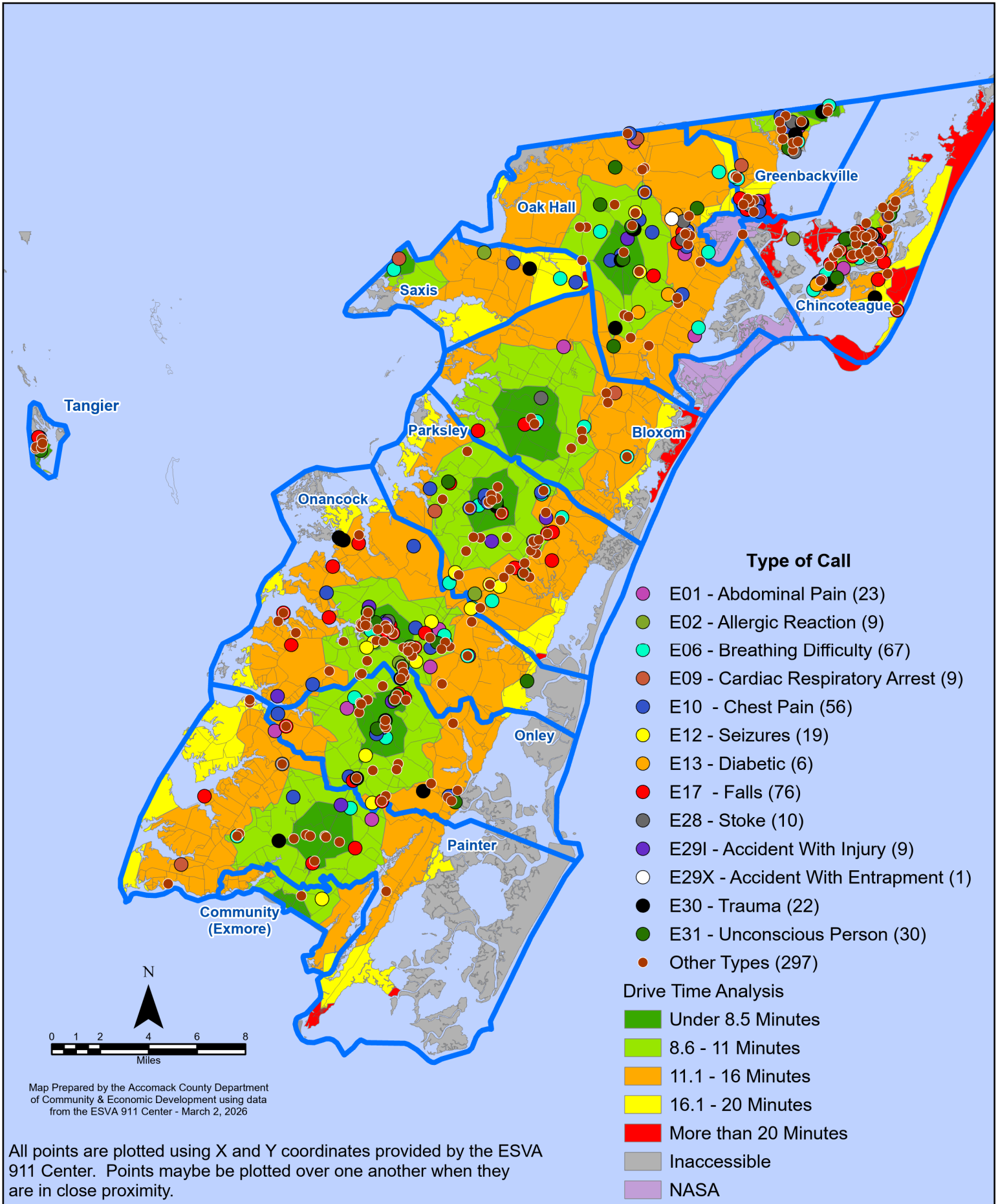


# August 2025 EMS Calls With Response Time Greater Than 20 Mins.

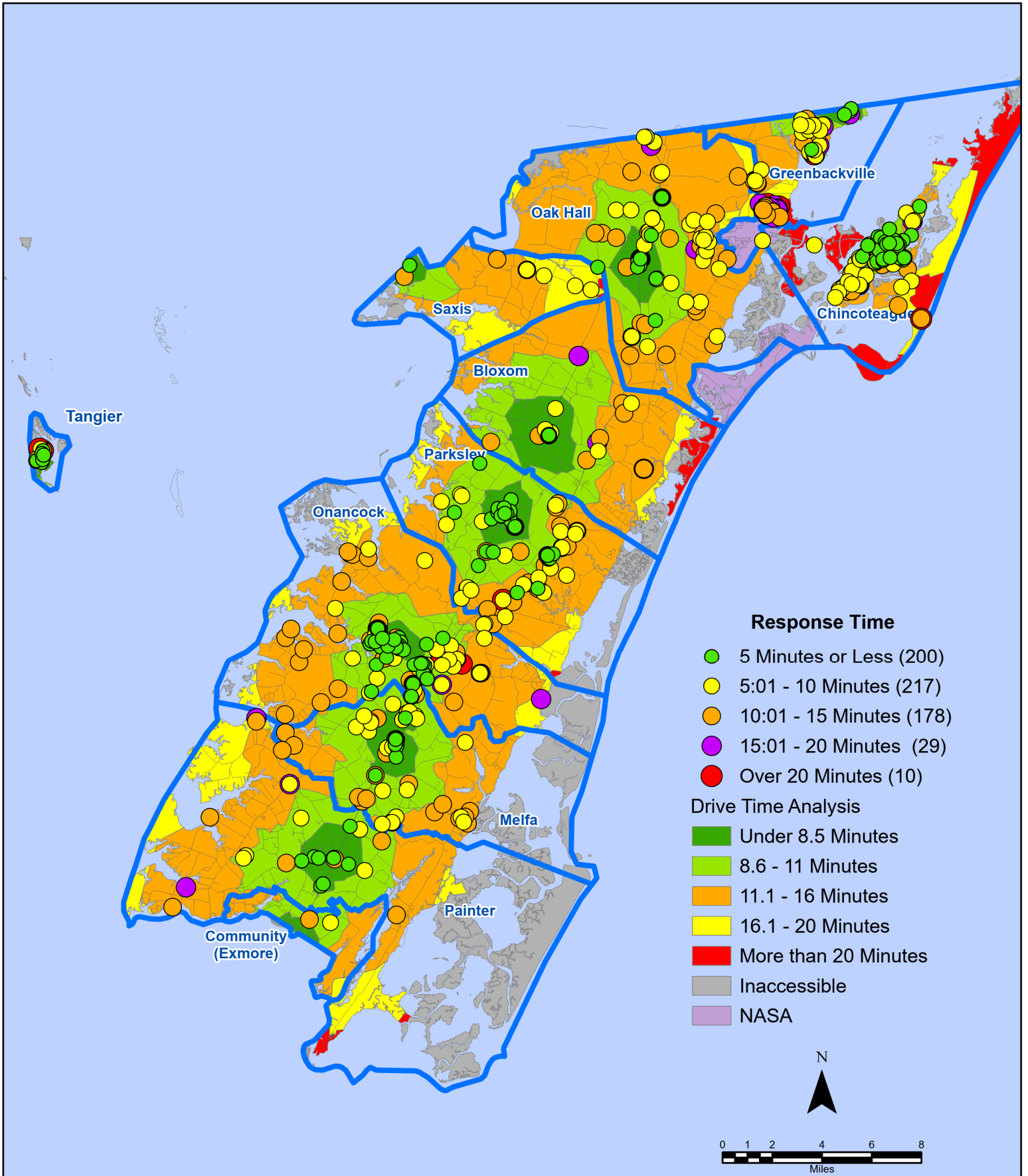


All points are plotted using X and Y coordinates provided by the ESVA 911 Center. Points may be plotted over one another when they are in close proximity.

# August 2025 EMS Calls By Type



# August 2025 EMS Calls By Response Time



All points are plotted using X and Y coordinates provided by the ESVA 911 Center. Points may be plotted over one another when they are in close proximity.

Map Prepared by the Accomack County Department of Community & Economic Development using data from the ESVA 911 Center - March 2, 2026

# August 2025 EMS Calls By Prime Unit

