

July 2025

Fire - Performance Measure Data *					
Response District	Total Calls in District	Greater than 20 min. Response Time	Longest Response Time	Calls Handled by other agency	Overall Station Benchmark %
New Church	10	2	0:24:03	1	80.0%
Greenbackville	1	0	0:11:03	0	100.0%
Chincoteague	13	0	0:10:21	3	100.0%
Atlantic	10	0	0:15:52	1	100.0%
Saxis	0	0	0	0	#DIV/0!
Bloxom	6	0	0:12:42	0	100.0%
Parksley	14	0	0:11:22	0	100.0%
Tasley	16	0	0:15:14	3	100.0%
Onancock	6	0	0:09:20	2	100.0%
Melfa	6	0	0:08:52	3	100.0%
Wachapreague	1	0	0:08:47	0	100.0%
Painter	9	0	0:12:29	0	100.0%
Tangier	0	0	0	0	#DIV/0!
System Totals	92	2	0:15:52	13	97.8%

EMS - Performance Measure Data						
Response District	Total Calls in District	Greater than 20 min. Response Time	Longest Response Time	Calls Handled by other agency	Station Benchmark Compliance %	Overall Station Reliability %
Greenbackville	47	4	0:23:07	4	91.5%	91.5%
Chincoteague	141	1	0:29:03	1	99.3%	99.3%
Saxis	7	0	0:12:09	3	100.0%	57.1%
Bloxom	45	0	0:17:00	42	100.0%	6.7%
Parksley	96	1	0:21:26	1	99.0%	99.0%
Onancock	120	1	0:21:37	8	99.2%	93.3%
Melfa	47	1	0:21:55	16	97.9%	66.0%
Painter	50	2	0:36:18	6	96.0%	88.0%
Oak Hall	102	2	0:30:36	1	98.0%	99.0%
Tangier	4	0	0:09:54	0	100.0%	100.0%
Community (Exmore)	10	0	0:09:28	3	100.0%	70.0%
System Totals	669	12	0:36:18	85	98.2%	87.3%

EMS Mutual Aid Data		Station Giving Aid														
Station Receiving Aid		Greenbackville	Chincoteague	Saxis	Bloxom	Parksley	Onancock	Melfa	Wachapreague/Painter	Oak Hall	Community (Exmore)	Northampton	Wallops	NORS	2nd Call	3rd Call
		Greenbackville									4					
Chincoteague									1							1
Saxis									3					3		
Bloxom					28				14					42		
Parksley									1						1	
Onancock					5		3							1	6	1
Melfa						7		9						13	3	
Painter							5			1				4	2	
Oak Hall	1														1	
Community (Exmore)								2			1			3		
Northampton Co.																
Wallops																
Totals	1	0	0	0	33	7	8	11	23	1	1	0	66	16	3	

Transport Destination			
Hospital Destination by Unit	Riverside - Shore Memorial	PRMC / Tidal Health	Other
Chincoteague	27	42	2
Saxis	4	1	
Bloxom			
Parksley	90	1	
Onancock	78		1
Melfa	22		1
Painter	39		1
Oak Hall	55	23	3
Wallops			
Totals	325	88	9

Benchmark = The Accomack County Board of Supervisors established a 20 minute standard for emergency response.

NORS = No Response by station or the call was handled by another station or agency.

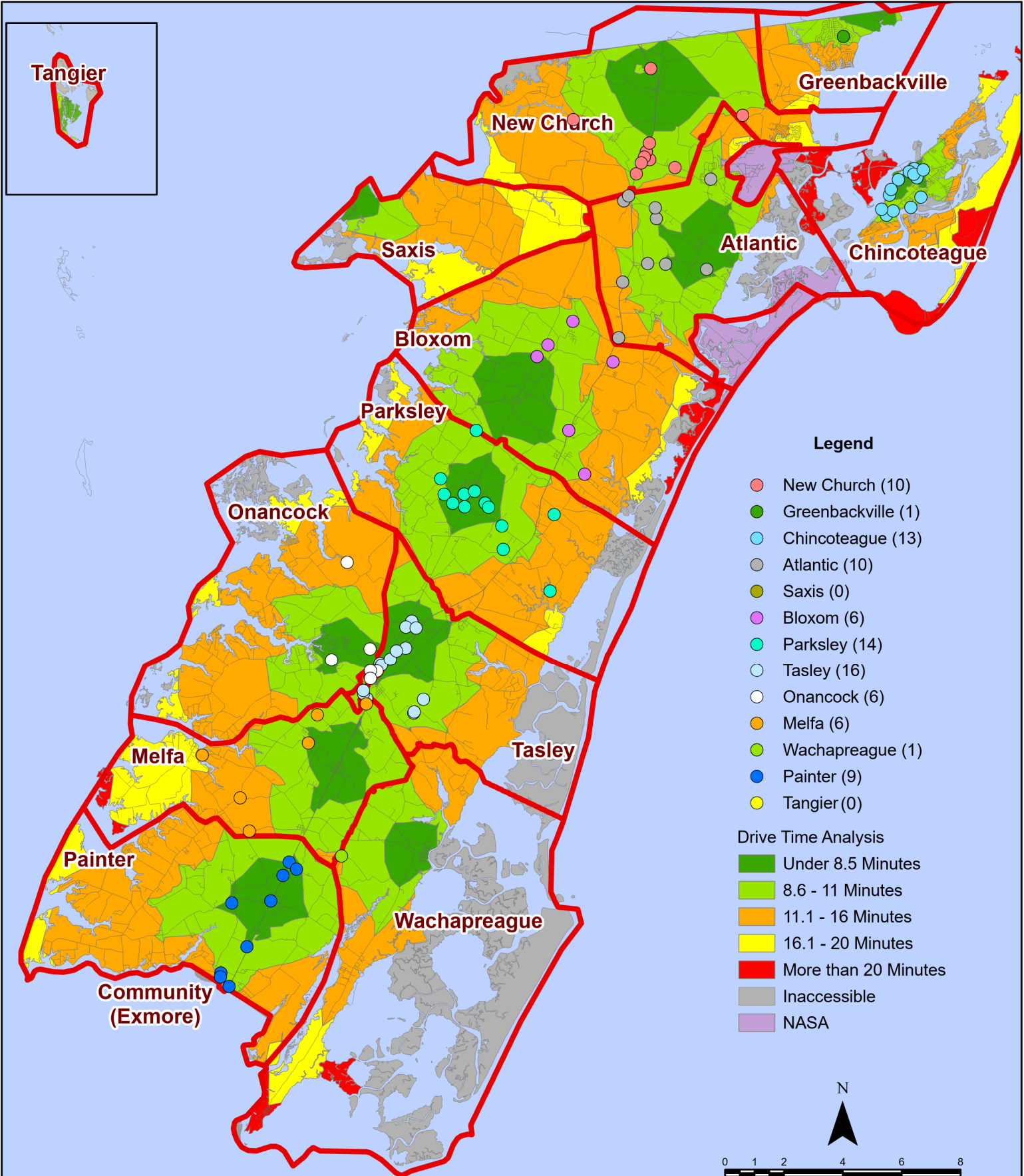
2nd Call = 2nd ambulance call received while first ambulance was on another call.

3rd Call = 3rd ambulance call received while first & second ambulances were on other calls.

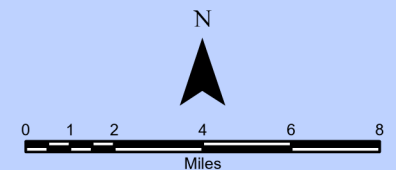
* This data excludes F1 Med (Medical Assist) calls in the Fire Data.

This information was prepared using data supplied by the Eastern Shore of Virginia 911 Center. This information is original incident data only and may not be representative of all units and/or stations who responded to an incident.

July 2025 Fire Calls By District

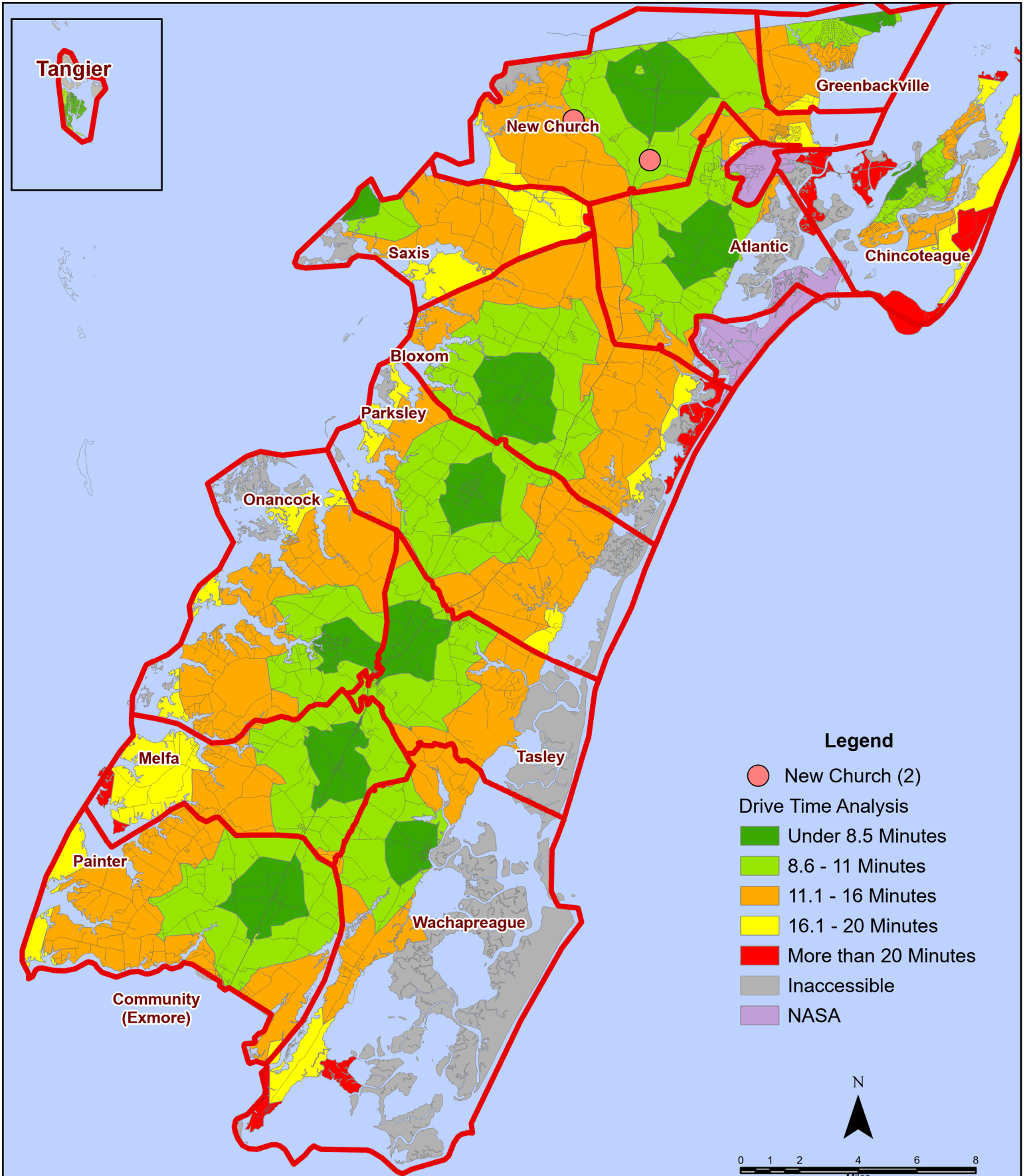


All points are plotted using X and Y coordinates provided by the ESVA 911 Center. Points may be plotted over one another when they are in close proximity.



Map Prepared by the Accomack County Department of Community & Economic Development using data from the ESVA 911 Center - March 2, 2026

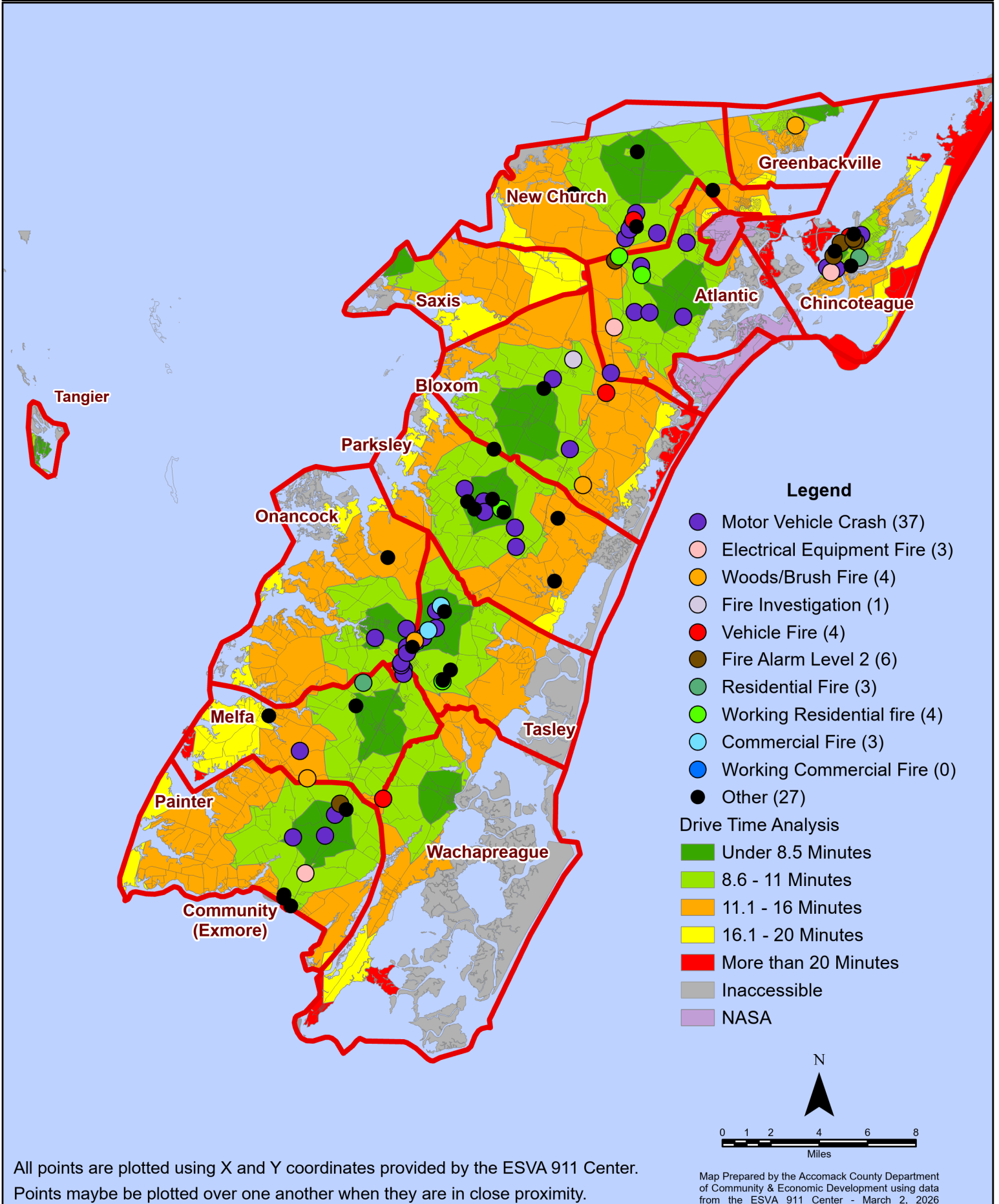
July 2025 Fire Calls With Response Time Greater Than 20 Mins.



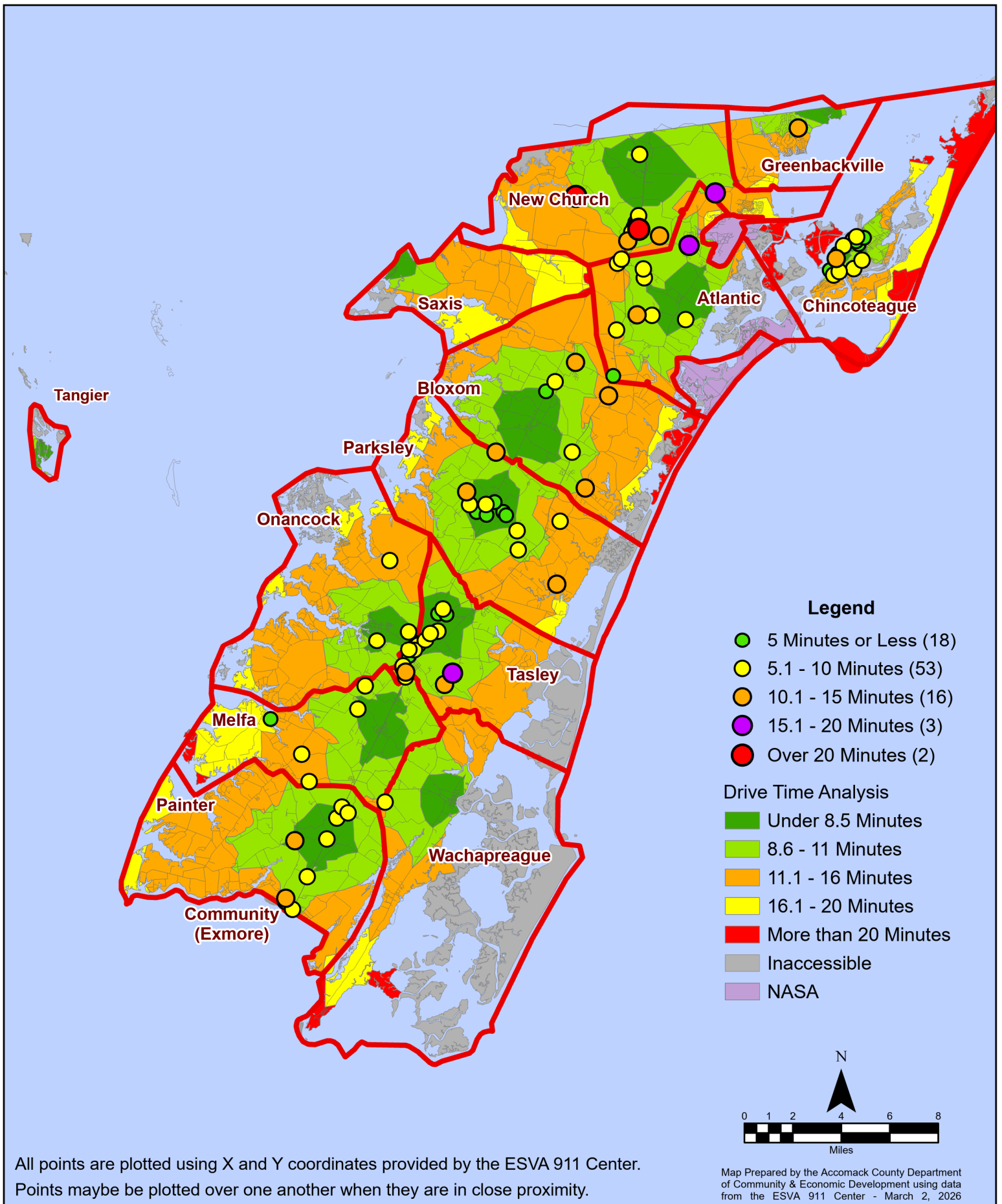
All points are plotted using X and Y coordinates provided by the ESVA 911 Center. Points may be plotted over one another when they are in close proximity.

Map Prepared by the Accomack County Department of Community & Economic Development using data from the ESVA 911 Center - March 2, 2026

July 2025 Fire Calls By Type



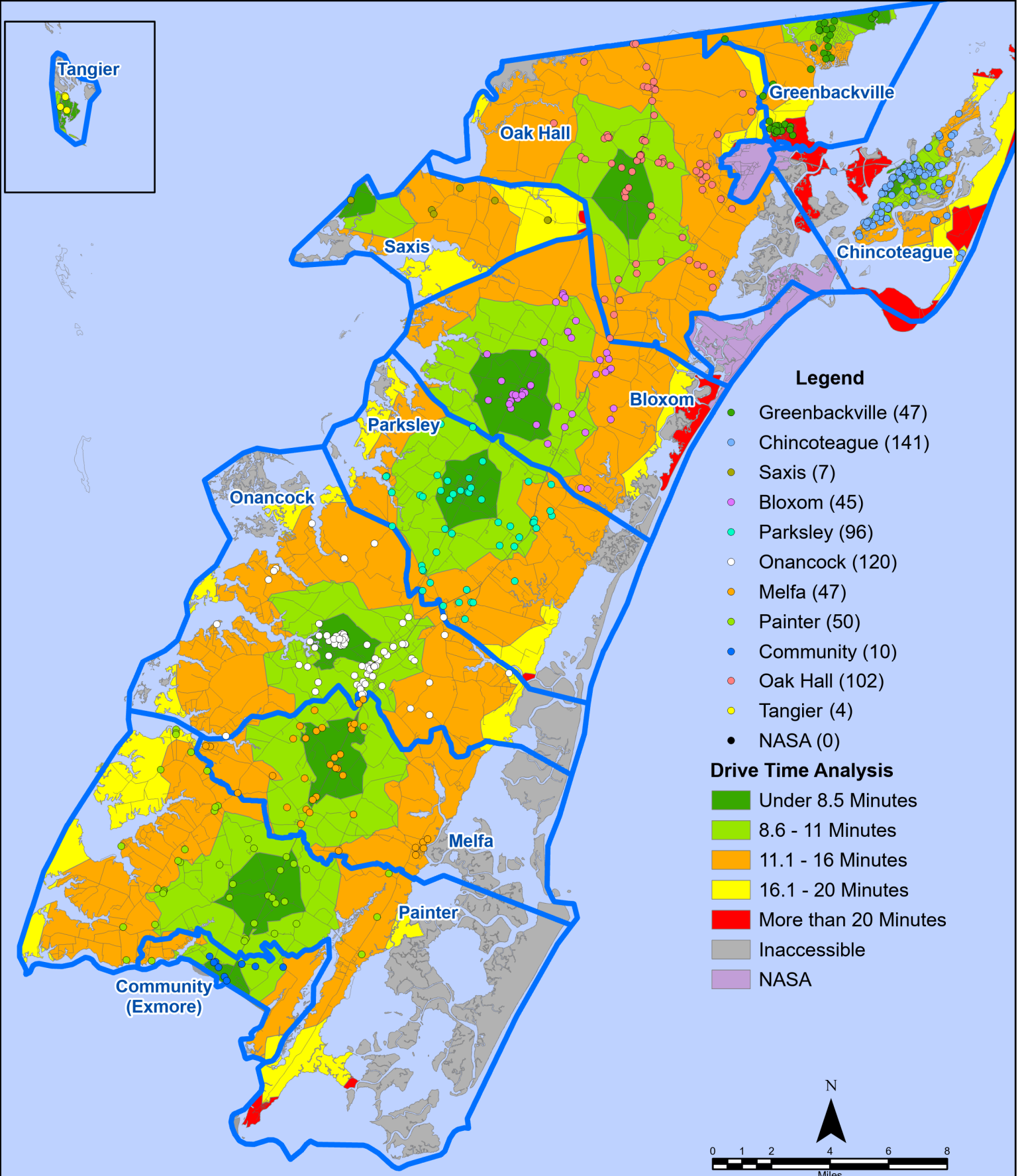
July 2025 Fire Calls By Response Time



All points are plotted using X and Y coordinates provided by the ESVA 911 Center. Points may be plotted over one another when they are in close proximity.

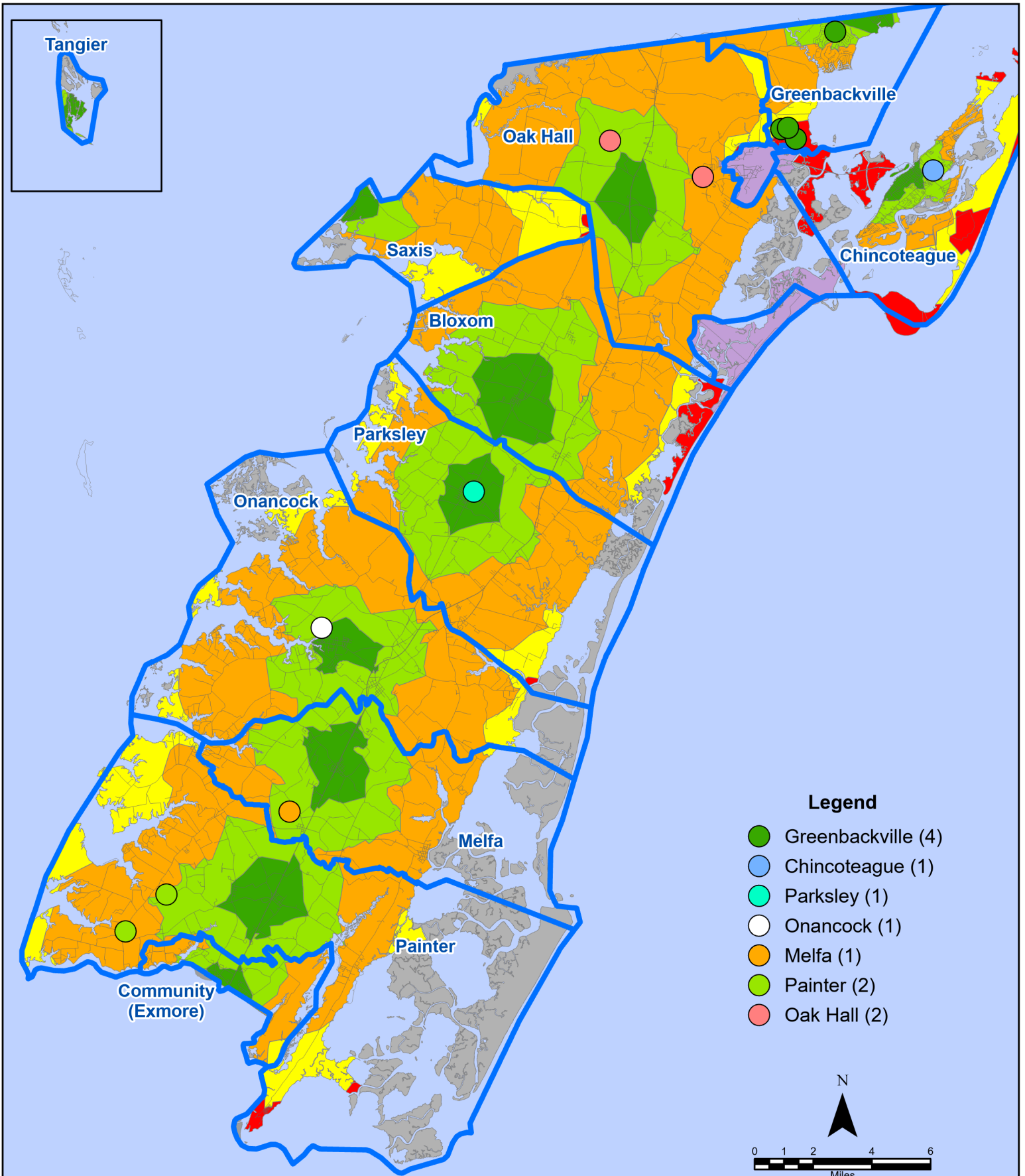
Map Prepared by the Accomack County Department of Community & Economic Development using data from the ESVA 911 Center - March 2, 2026

July 2025 EMS Calls By District



All points are plotted using X and Y coordinates provided by the ESVA 911 Center. Points may be plotted over one another when they are in close proximity.

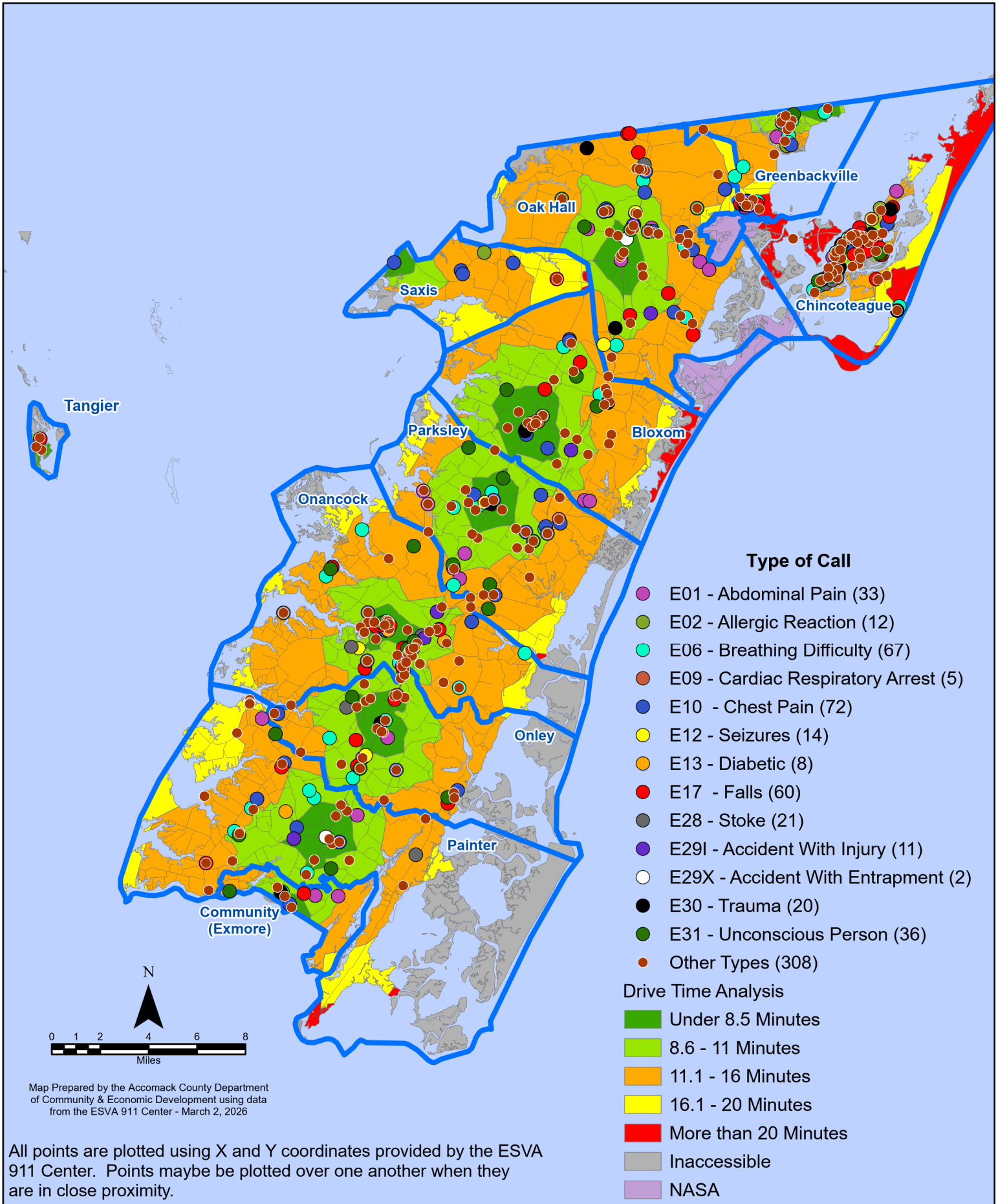
July 2025 EMS Calls With Response Time Greater Than 20 Mins.



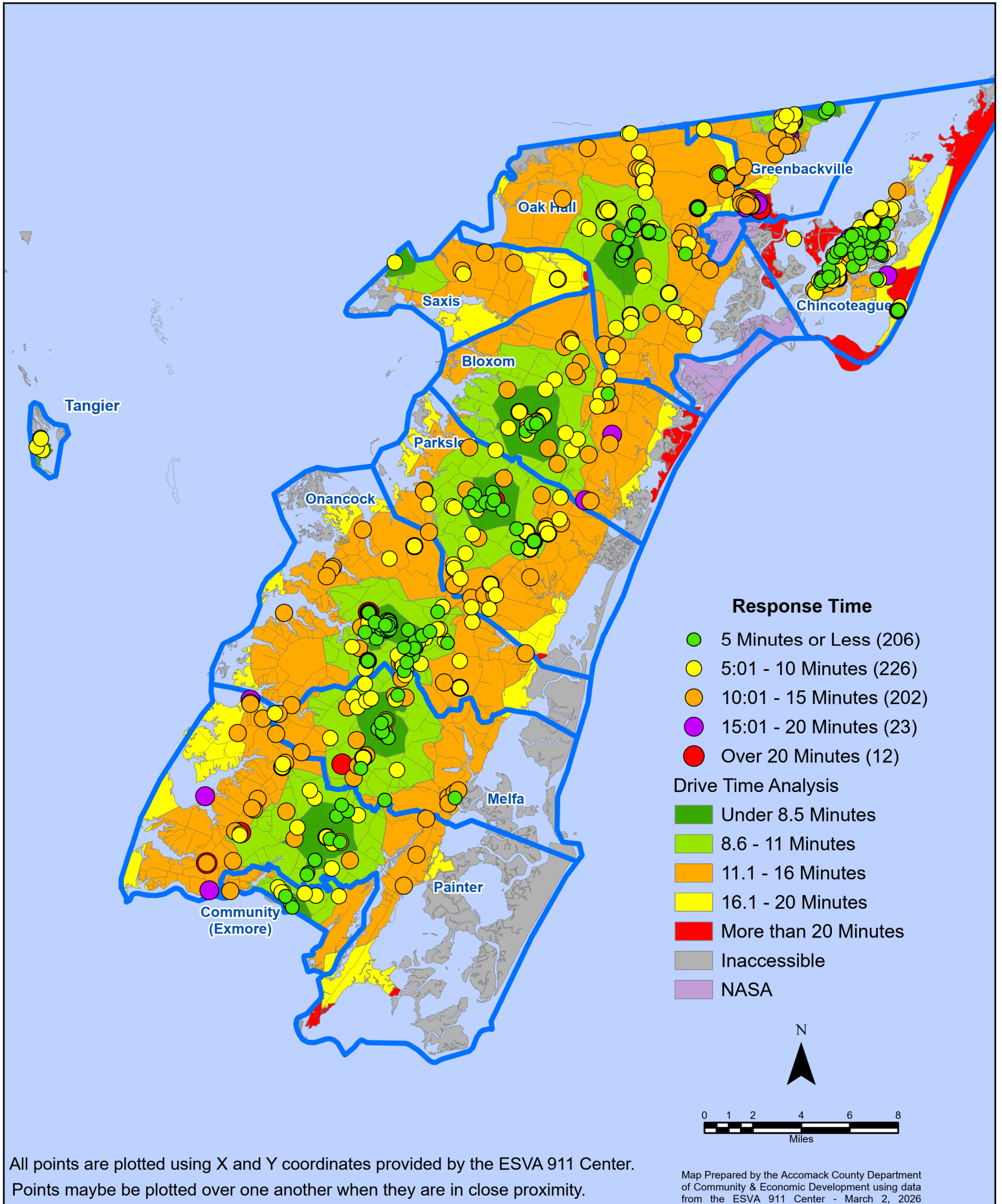
All points are plotted using X and Y coordinates provided by the ESVA 911 Center. Points may be plotted over one another when they are in close proximity.

Map Prepared by the Accomack County Department of Community & Economic Development using data from the ESVA 911 Center - March 2, 2026

July 2025 EMS Calls By Type



July 2025 EMS Calls By Response Time



All points are plotted using X and Y coordinates provided by the ESVA 911 Center. Points may be plotted over one another when they are in close proximity.

Map Prepared by the Accomack County Department of Community & Economic Development using data from the ESVA 911 Center - March 2, 2026

July 2025 EMS Calls By Prime Unit

