

May 2025

Fire - Performance Measure Data *					
Response District	Total Calls in District	Greater than 20 min. Response Time	Longest Response Time	Calls Handled by other agency	Overall Station Benchmark %
New Church	10	1	0:33:20	3	90.0%
Greenbackville	4	0	0:12:46	1	100.0%
Chincoteague	3	0	0:07:57	0	100.0%
Atlantic	9	0	0:12:17	2	100.0%
Saxis	3	0	0:18:45	0	100.0%
Bloxom	13	0	0:11:22	1	100.0%
Parksley	11	0	0:10:39	0	100.0%
Tasley	6	0	0:13:40	1	100.0%
Onancock	11	0	0:17:39	1	100.0%
Melfa	11	1	0:20:59	8	90.9%
Wachapreague	2	0	0:09:58	0	100.0%
Painter	13	0	0:17:19	0	100.0%
Tangier					#DIV/0!
System Totals	96	2	0:33:20	17	97.9%

EMS - Performance Measure Data						
Response District	Total Calls in District	Greater than 20 min. Response Time	Longest Response Time	Calls Handled by other agency	Station Benchmark Compliance %	Overall Station Reliability %
Greenbackville	45	2	0:31:30	4	95.6%	91.1%
Chincoteague	73	0	0:19:17	1	100.0%	98.6%
Saxis	9	0	0:15:23	2	100.0%	77.8%
Bloxom	34	0	0:14:04	31	100.0%	8.8%
Parksley	76	1	0:21:03	0	98.7%	100.0%
Onancock	112	1	0:24:27	6	99.1%	94.6%
Melfa	37	0	0:15:46	25	100.0%	32.4%
Wachapreague (Painter)	33	1	0:21:58	2	97.0%	93.9%
Oak Hall	76	2	0:27:36	5	97.4%	93.4%
Tangier	9	0	0:07:16	0	100.0%	100.0%
Community (Exmore)	7	0	0:16:24	4	100.0%	42.9%
System Totals	511	7	0:31:30	80	98.6%	84.3%

		Station Giving Aid														
Station Receiving Aid		Greenbackville	Chincoteague	Saxis	Bloxom	Parksley	Onancock	Wachapreague/Painter	Oak Hall	Community (Exmore)	Northampton	Wallops	NORS	2nd Call	3rd Call	
		Greenbackville								4						4
Chincoteague								1							1	
Saxis								2					2			
Bloxom					24			7					31			
Parksley																
Onancock					6								5	1		
Melfa					1	13	11						25			
Wachapreague (Painter)						1			1				1	1		
Oak Hall	1	1		2	1								2	2	1	
Community (Exmore)								3			1		4			
Northampton Co.																
Wallops																
Totals		1	1	0	0	33	15	0	14	14	1	1	0	70	8	2

Transport Destination			
Hospital Destination by Unit	Riverside - Shore Memorial	PRMC / Tidal Health	Other
Chincoteague	20	19	
Saxis	2	2	
Bloxom	2		
Parksley	69	2	1
Onancock	77		3
Melfa	9		
Wachapreague (Painter)	32		1
Oak Hall	49	13	1
Wallops			
Totals	278	51	7

Benchmark = The Accomack County Board of Supervisors established a 20 minute standard for emergency response.

NORS = No Response by station or the call was handled by another station or agency.

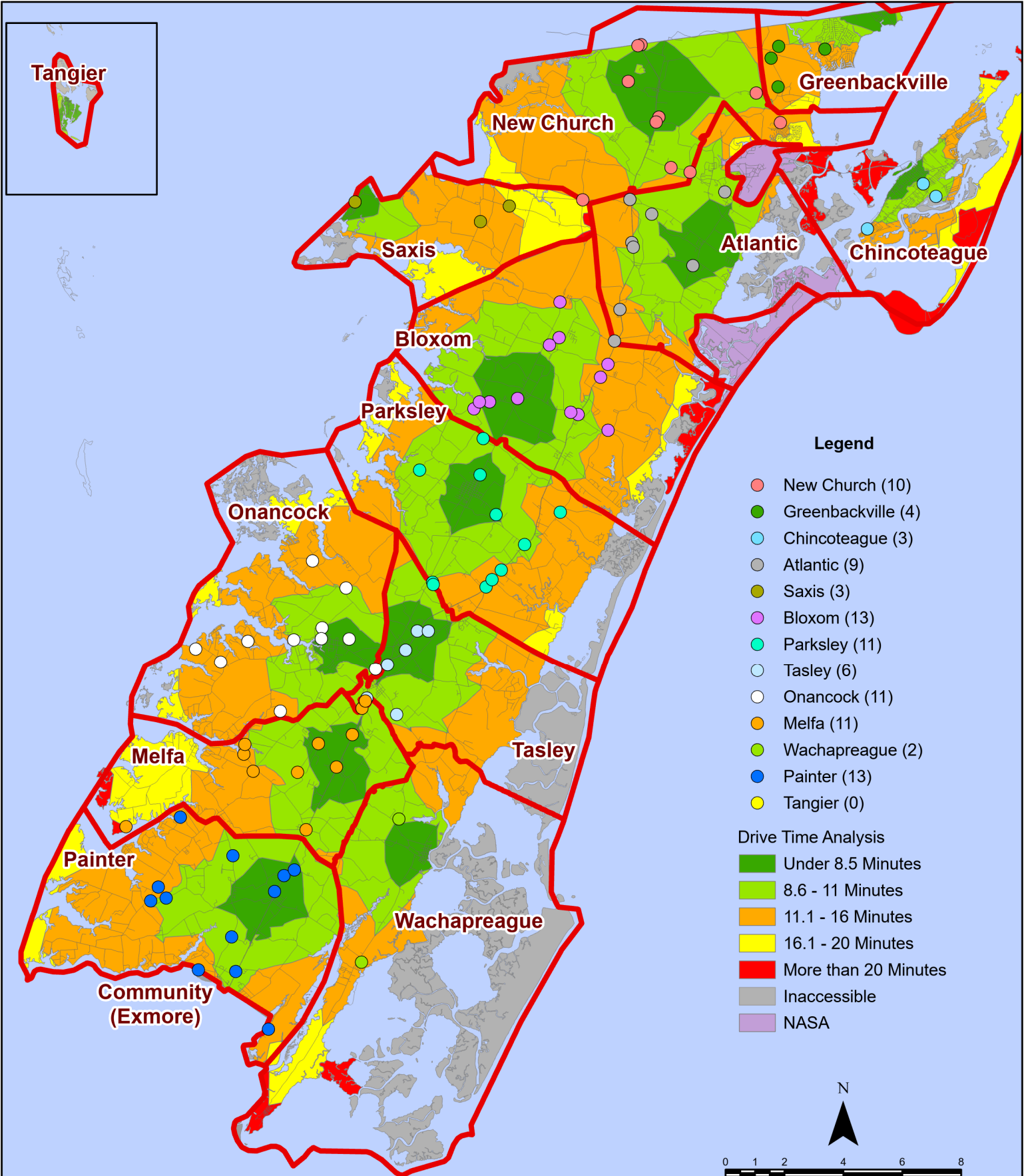
2nd Call = 2nd ambulance call received while first ambulance was on another call.

3rd Call = 3rd ambulance call received while first & second ambulances were on other calls.

* This data excludes F1 Med (Medical Assist) calls in the Fire Data.

This information was prepared using data supplied by the Eastern Shore of Virginia 911 Center. This information is original incident data only and may not be representative of all units and/or stations who responded to an incident.

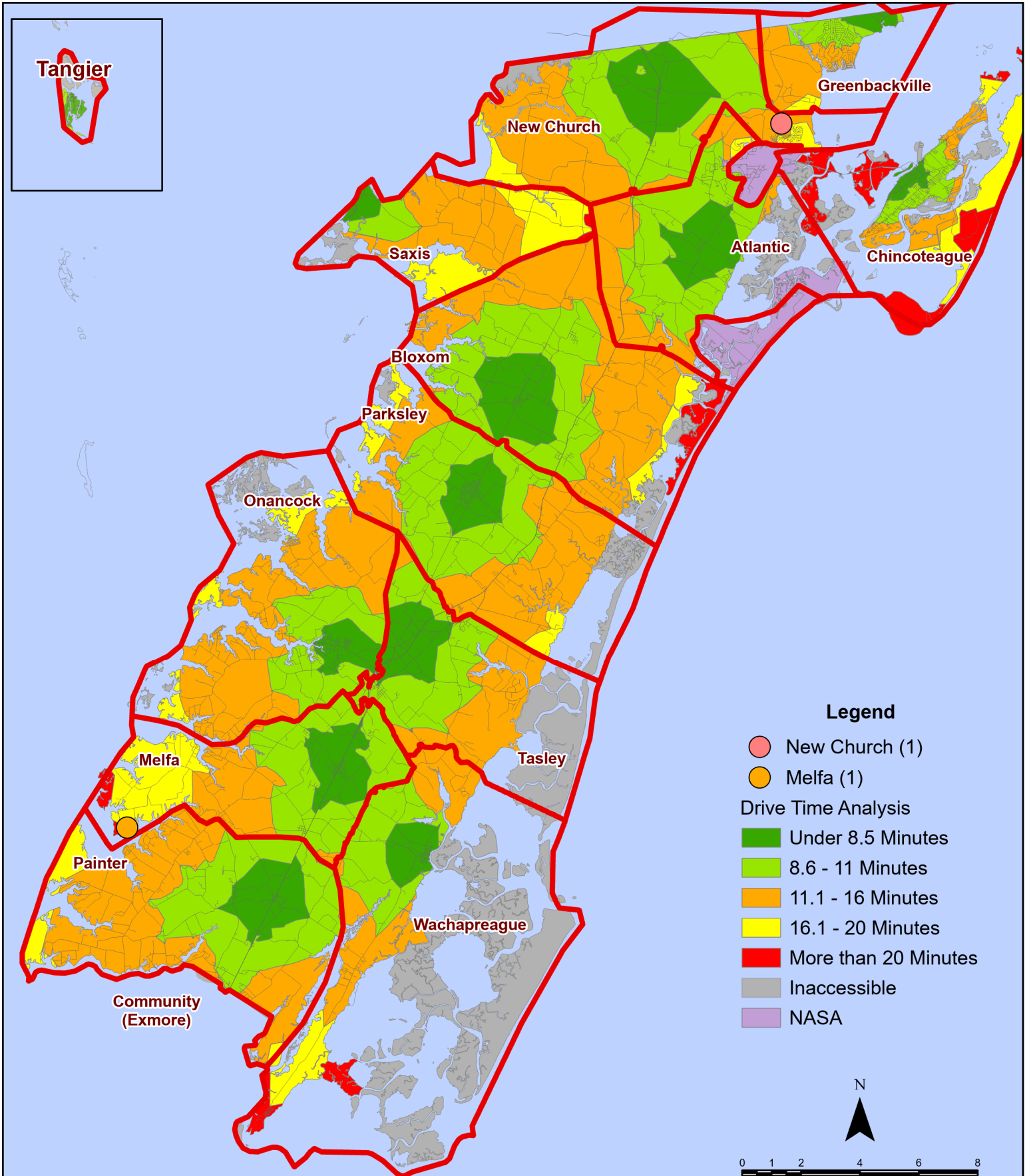
May 2025 Fire Calls By District



All points are plotted using X and Y coordinates provided by the ESVA 911 Center. Points may be plotted over one another when they are in close proximity.

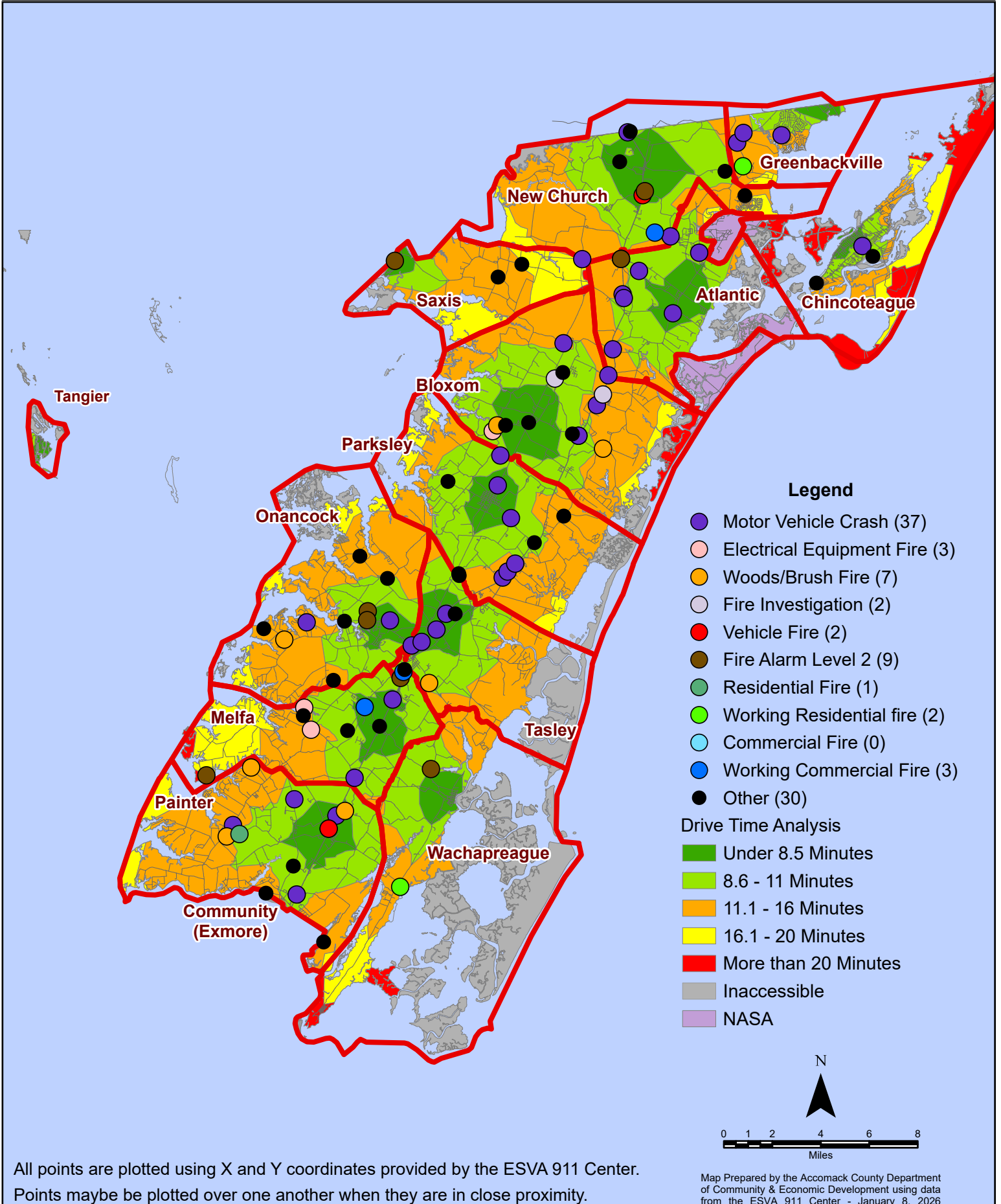
Map Prepared by the Accomack County Department of Community & Economic Development using data from the ESVA 911 Center - January 7, 2026

May 2025 Fire Calls With Response Time Greater Than 20 Mins.



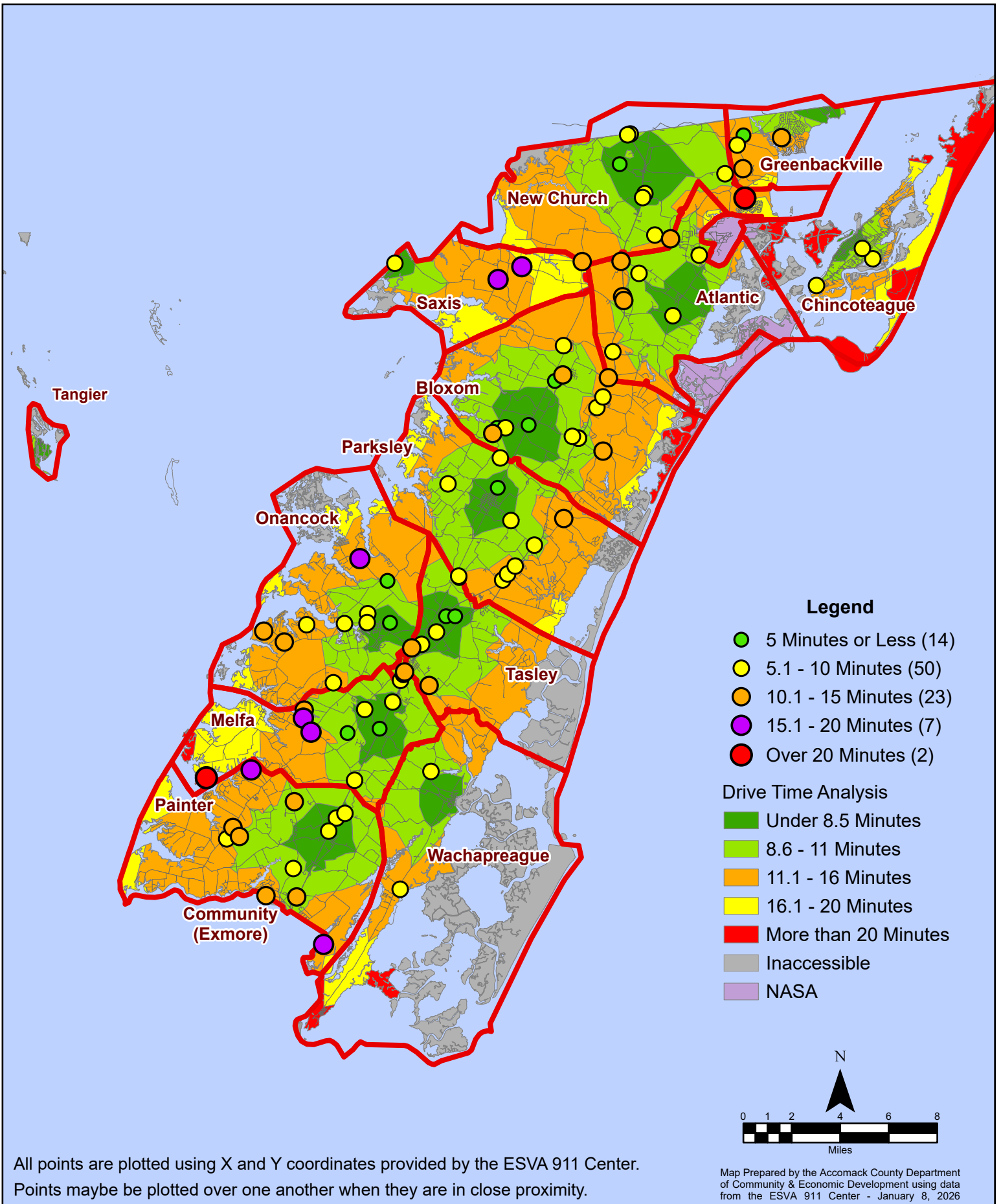
All points are plotted using X and Y coordinates provided by the ESVA 911 Center. Points may be plotted over one another when they are in close proximity.

May 2025 Fire Calls By Type



All points are plotted using X and Y coordinates provided by the ESVA 911 Center. Points may be plotted over one another when they are in close proximity.

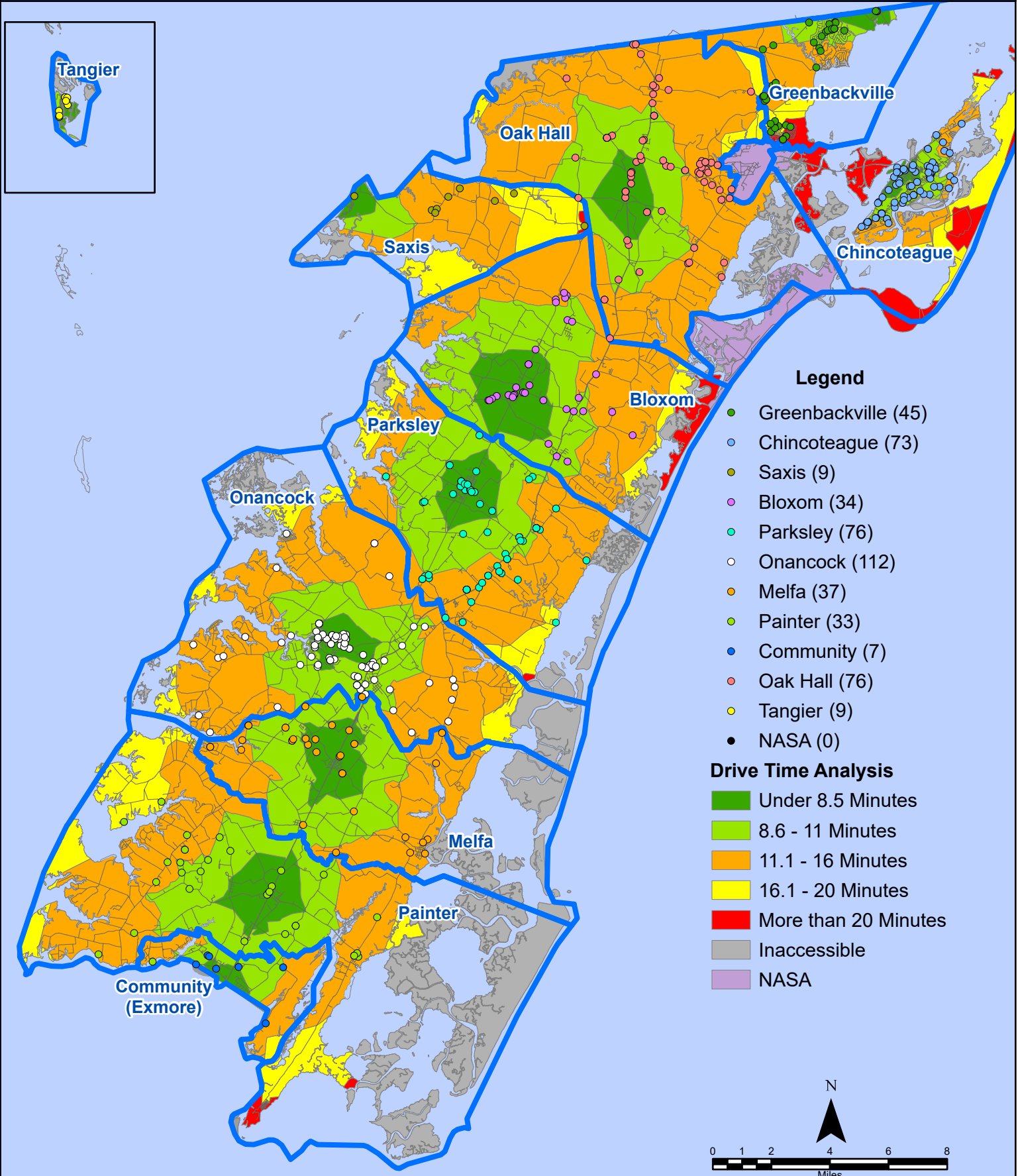
May 2025 Fire Calls By Response Time



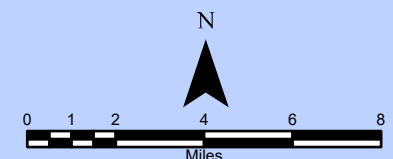
All points are plotted using X and Y coordinates provided by the ESVA 911 Center. Points may be plotted over one another when they are in close proximity.

Map Prepared by the Accomack County Department of Community & Economic Development using data from the ESVA 911 Center - January 8, 2026

May 2025 EMS Calls By District

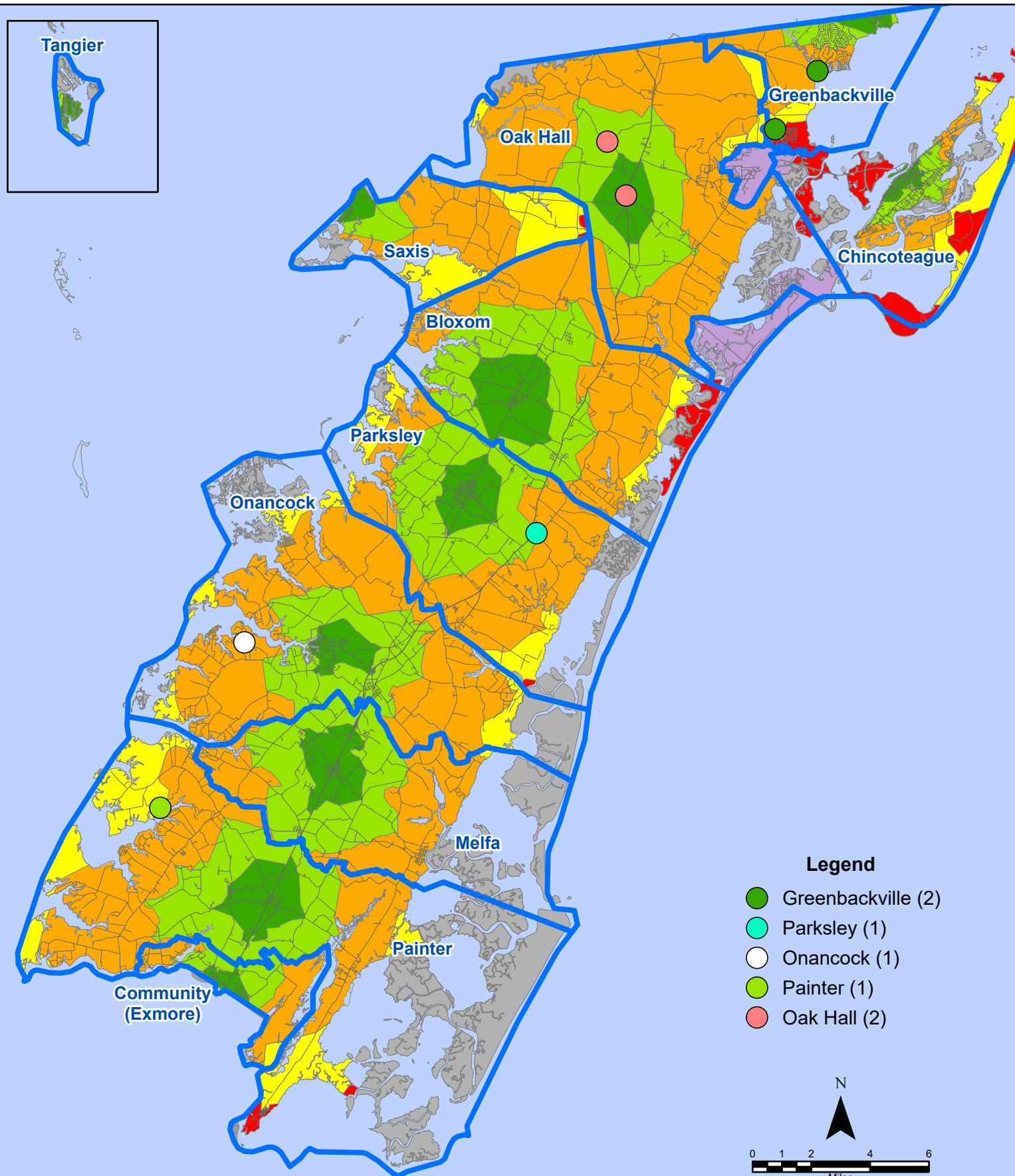


All points are plotted using X and Y coordinates provided by the ESVA 911 Center.
 Points may be plotted over one another when they are in close proximity.



Map Prepared by the Accomack County Department of Community & Economic Development using data from the ESVA 911 Center - January 8, 2026

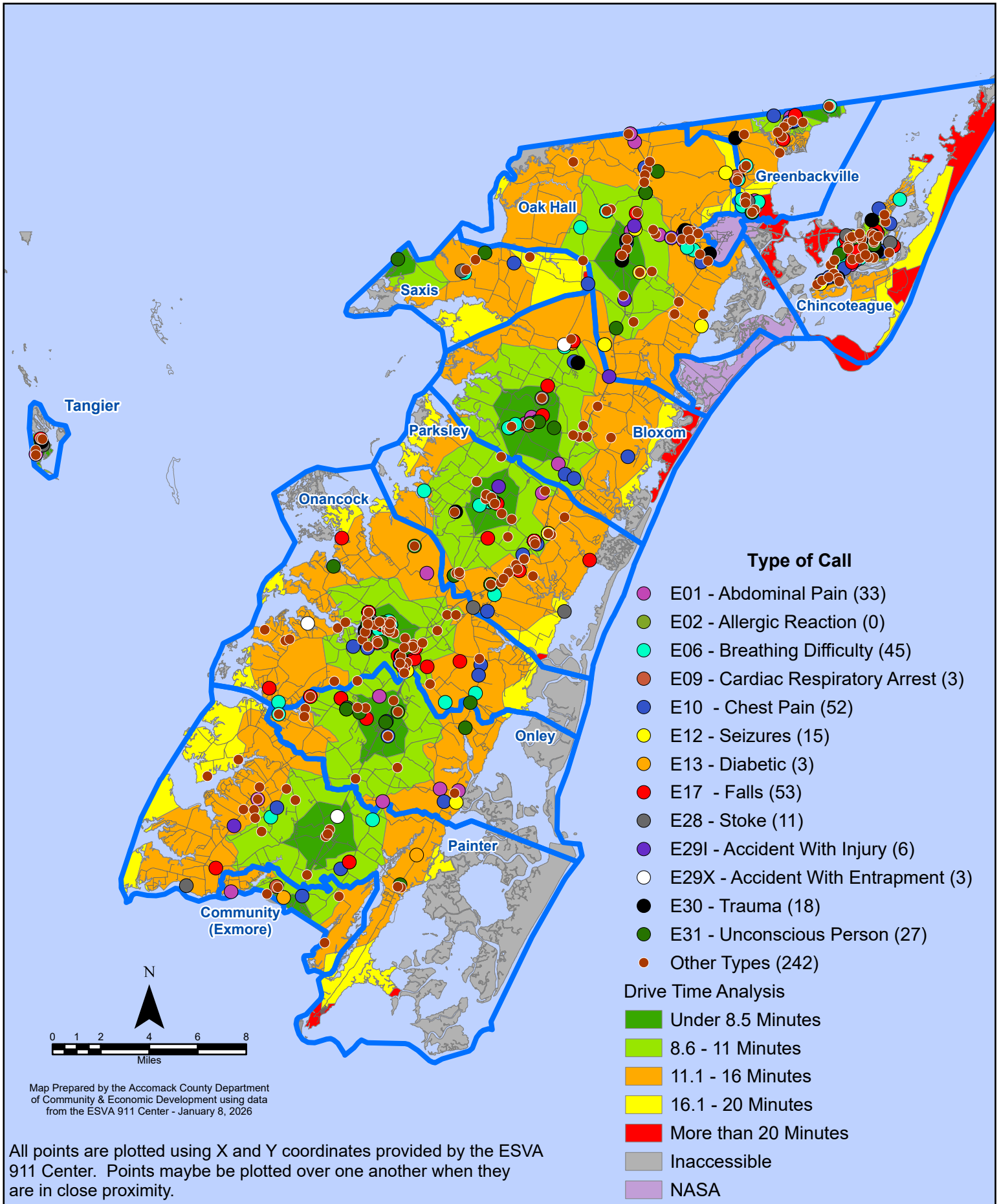
May 2025 EMS Calls With Response Time Greater Than 20 Mins.



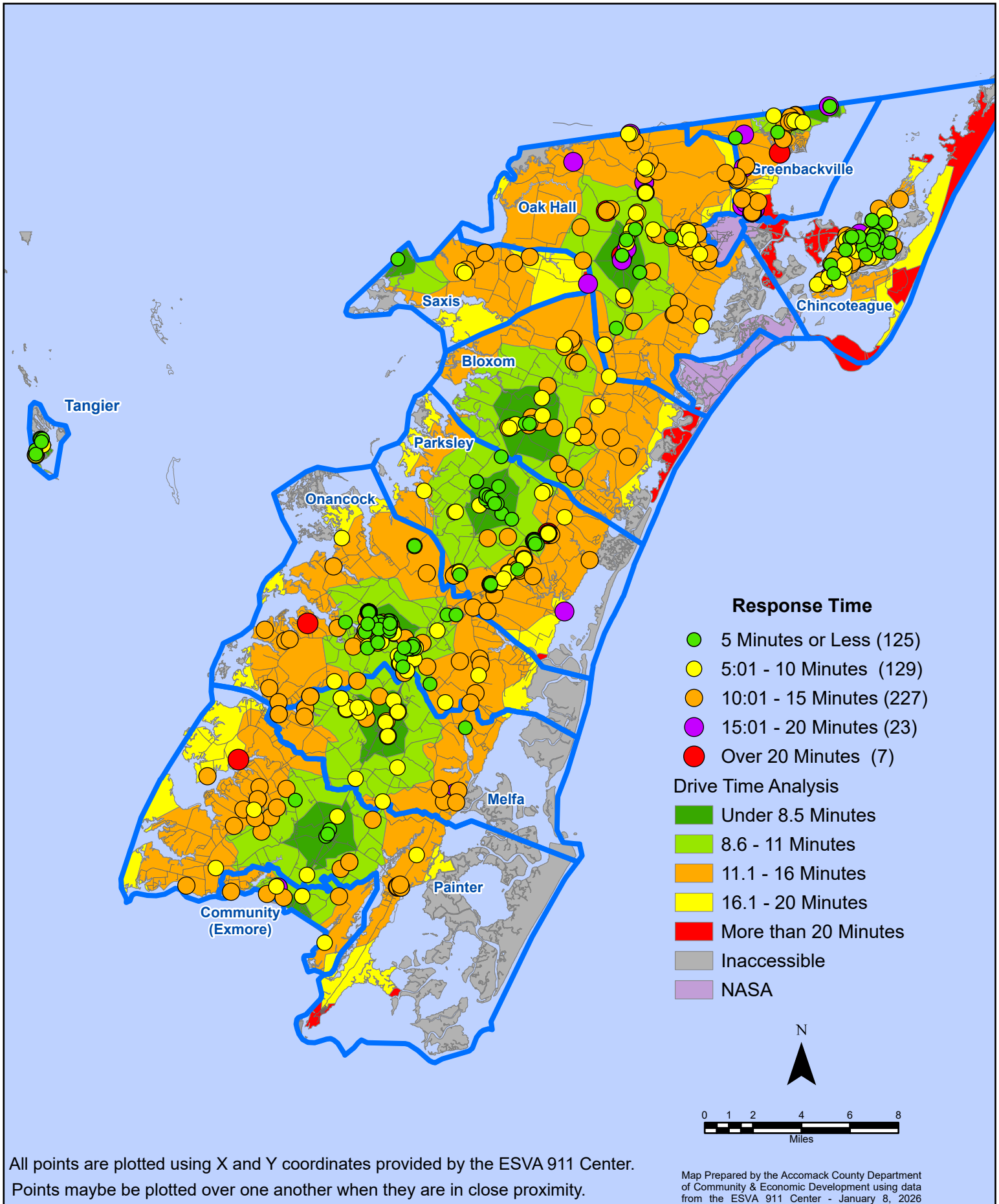
All points are plotted using X and Y coordinates provided by the ESVA 911 Center. Points may be plotted over one another when they are in close proximity.

Map Prepared by the Accomack County Department of Community & Economic Development using data from the ESVA 911 Center - January 8, 2026

May 2025 EMS Calls By Type



May 2025 EMS Calls By Response Time



May 2025 EMS Calls By Prime Unit

