

# February 2025

Fire - Performance Measure Data *					
Response District	Total Calls in District	Greater than 20 min. Response Time	Longest Response Time	Calls Handled by other agency	Overall Station Benchmark %
New Church	7	1	0:24:10	0	85.7%
Greenbackville	3	0	0:18:45	0	100.0%
Chincoteague	6	0	0:13:55	1	100.0%
Atlantic	5	0	0:14:14	0	100.0%
Saxis	3	1	0:23:15	0	66.7%
Bloxom	10	1	0:28:11	1	90.0%
Parksley	9	2	0:53:02	2	77.8%
Tasley	9	0	0:18:14	3	100.0%
Onancock	10	0	0:11:31	0	100.0%
Melfa	13	0	0:15:51	5	100.0%
Wachapreague	10	0	0:16:02	1	100.0%
Painter	2	0	0:16:38	0	100.0%
Tangier	3	0	0:18:51	0	100.0%
<b>System Totals</b>	<b>90</b>	<b>5</b>	<b>0:53:02</b>	<b>13</b>	<b>94.4%</b>

EMS - Performance Measure Data						
Response District	Total Calls in District	Greater than 20 min. Response Time	Longest Response Time	Calls Handled by other agency	Station Benchmark Compliance %	Overall Station Reliability %
Greenbackville	55	6	0:26:02	37	89.1%	32.7%
Chincoteague	66	0	0:11:34	0	100.0%	100.0%
Saxis	9	0	0:14:38	1	100.0%	88.9%
Bloxom	42	0	0:19:04	31	100.0%	26.2%
Parksley	90	0	0:14:00	3	100.0%	96.7%
Onancock	123	0	0:17:43	9	100.0%	92.7%
Melfa	59	2	0:23:14	24	96.6%	59.3%
Wachapreague (Painter)	36	0	0:16:40	5	100.0%	86.1%
Oak Hall	66	0	0:18:14	1	100.0%	98.5%
Tangier	10	0	0:10:53	0	100.0%	100.0%
Community (Exmore)	8	0	0:08:11	4	100.0%	50.0%
<b>System Totals</b>	<b>564</b>	<b>8</b>	<b>0:26:02</b>	<b>115</b>	<b>98.6%</b>	<b>79.6%</b>

EMS Mutual Aid Data															
Station Receiving Aid	Station Giving Aid														
	Greenbackville	Chincoteague	Saxis	Bloxom	Parksley	Onancock	Melfa	Wachapreague/Painter	Oak Hall	Community (Exmore)	Northampton	Wallops	NORS	2nd Call	3rd Call
Greenbackville		1						36					32	4	1
Chincoteague															
Saxis								1					1		
Bloxom				24				7					29	2	
Parksley					2			1					2		1
Onancock				5		2		2					5	3	1
Melfa				1	9		13		1				21	3	
Wachapreague (Painter)				2	2	1							4	1	
Oak Hall	1													1	
Community (Exmore)							4						4		
Northampton Co.															
Wallops															
<b>Totals</b>	<b>0</b>	<b>2</b>	<b>0</b>	<b>0</b>	<b>32</b>	<b>13</b>	<b>3</b>	<b>17</b>	<b>47</b>	<b>1</b>	<b>0</b>	<b>0</b>	<b>98</b>	<b>14</b>	<b>3</b>

Transport Destination			
Hospital Destination by Unit	Riverside - Shore Memorial	PRMC / Tidal Health	Other
Chincoteague	18	13	
Saxis	4	2	
Bloxom	8	2	
Parksley	87	1	1
Onancock	70	1	2
Melfa	22		
Wachapreague (Painter)	42		2
Oak Hall	44	23	2
Wallops			
<b>Totals</b>	<b>304</b>	<b>48</b>	<b>7</b>

**Benchmark** = The Accomack County Board of Supervisors established a 20 minute standard for emergency response.

**NORS** = No Response by station or the call was handled by another station or agency.

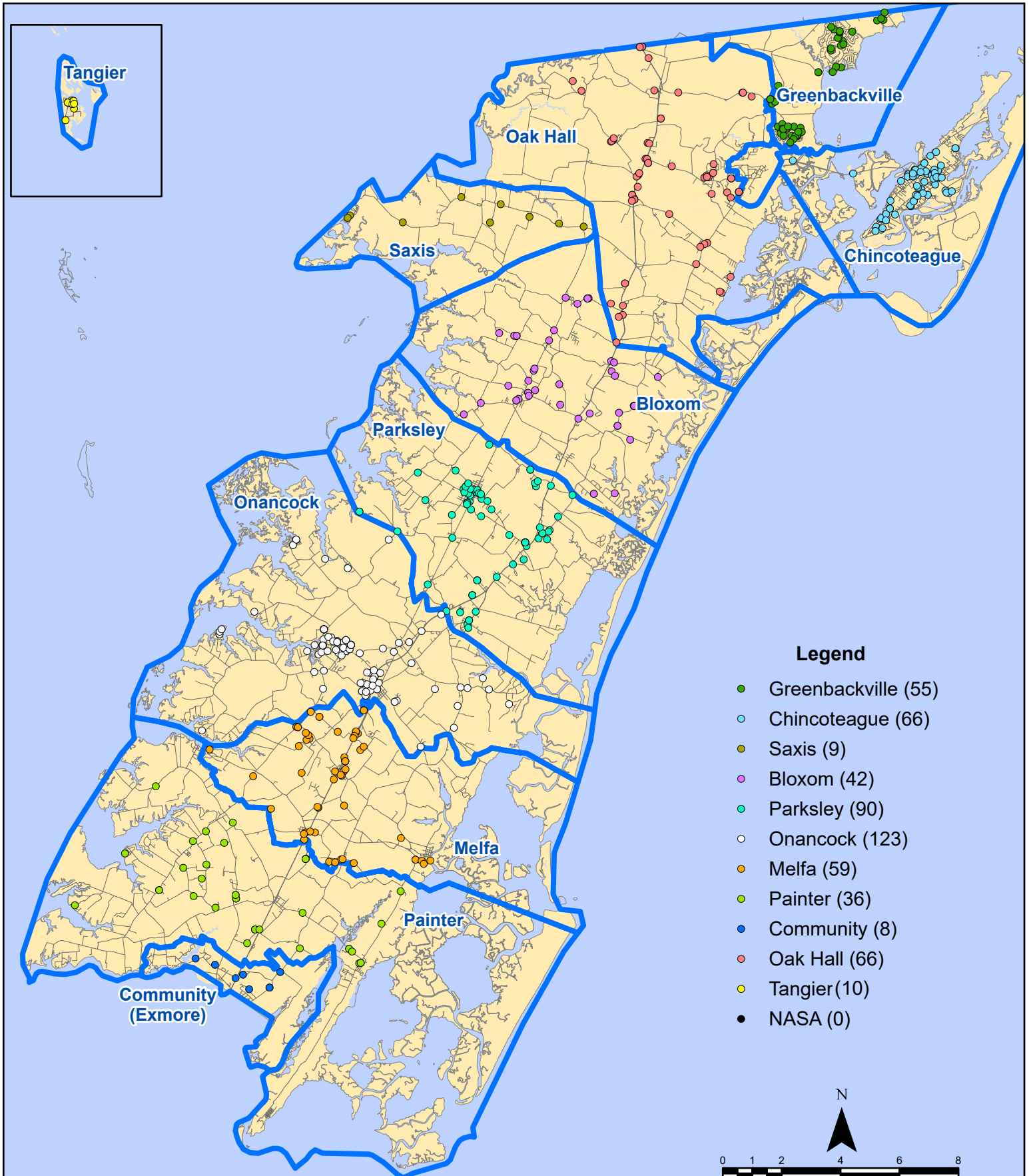
**2nd Call** = 2nd ambulance call received while first ambulance was on another call.

**3rd Call** = 3rd ambulance call received while first & second ambulances were on other calls.

\* This data excludes F1 Med (Medical Assist) calls in the Fire Data.

*This information was prepared using data supplied by the Eastern Shore of Virginia 911 Center. This information is original incident data only and may not be representative of all units and/or stations who responded to an incident.*

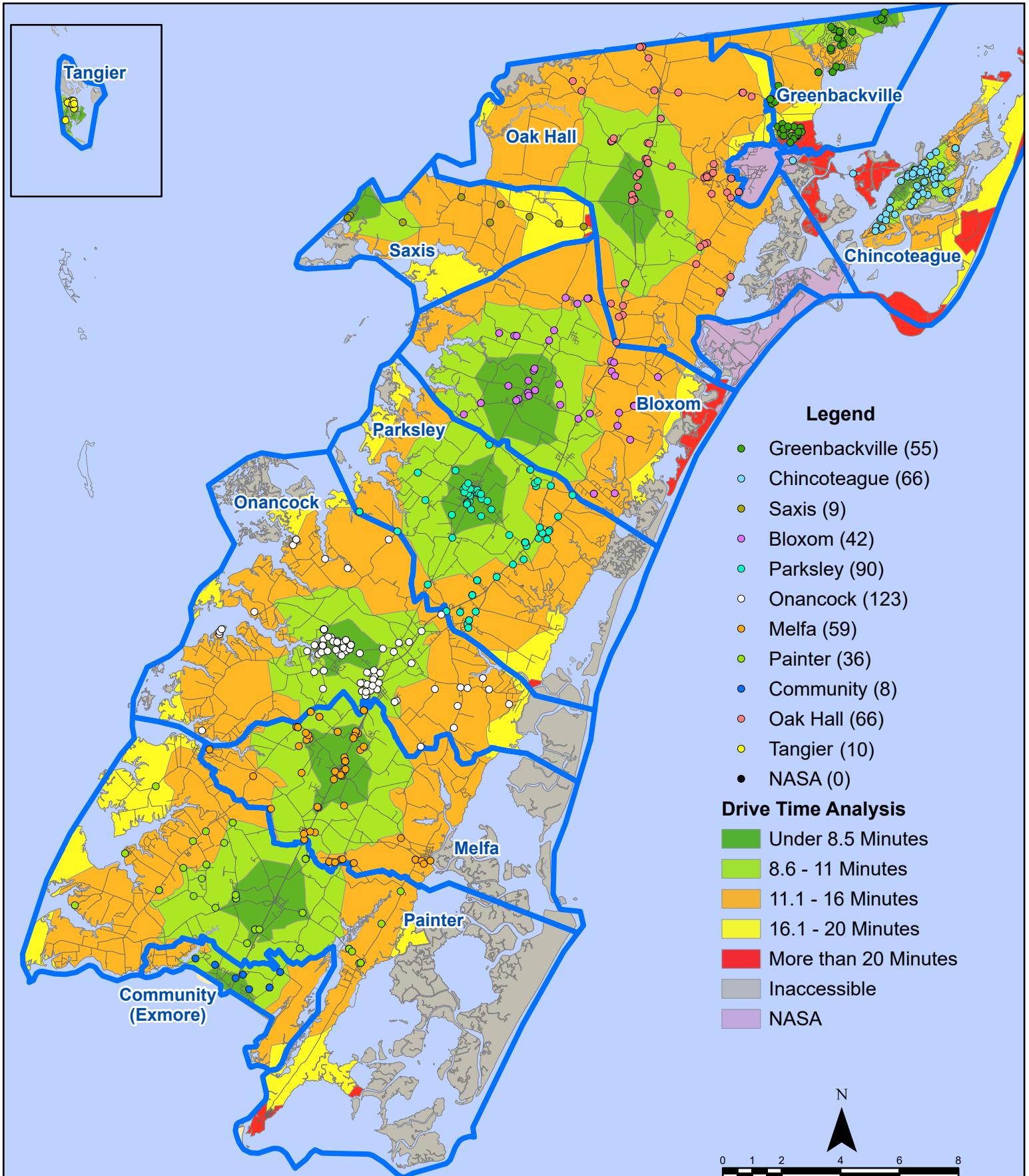
# February 2025 EMS Calls By District



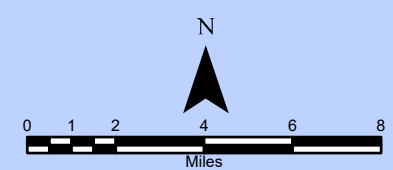
All points are plotted using X and Y coordinates provided by the ESVA 911 Center.  
Points may be plotted over one another when they are in close proximity.

Map Prepared by the Accomack County Department of Building, Planning & Economic Development using data from the ESVA 911 Center - March 13, 2025

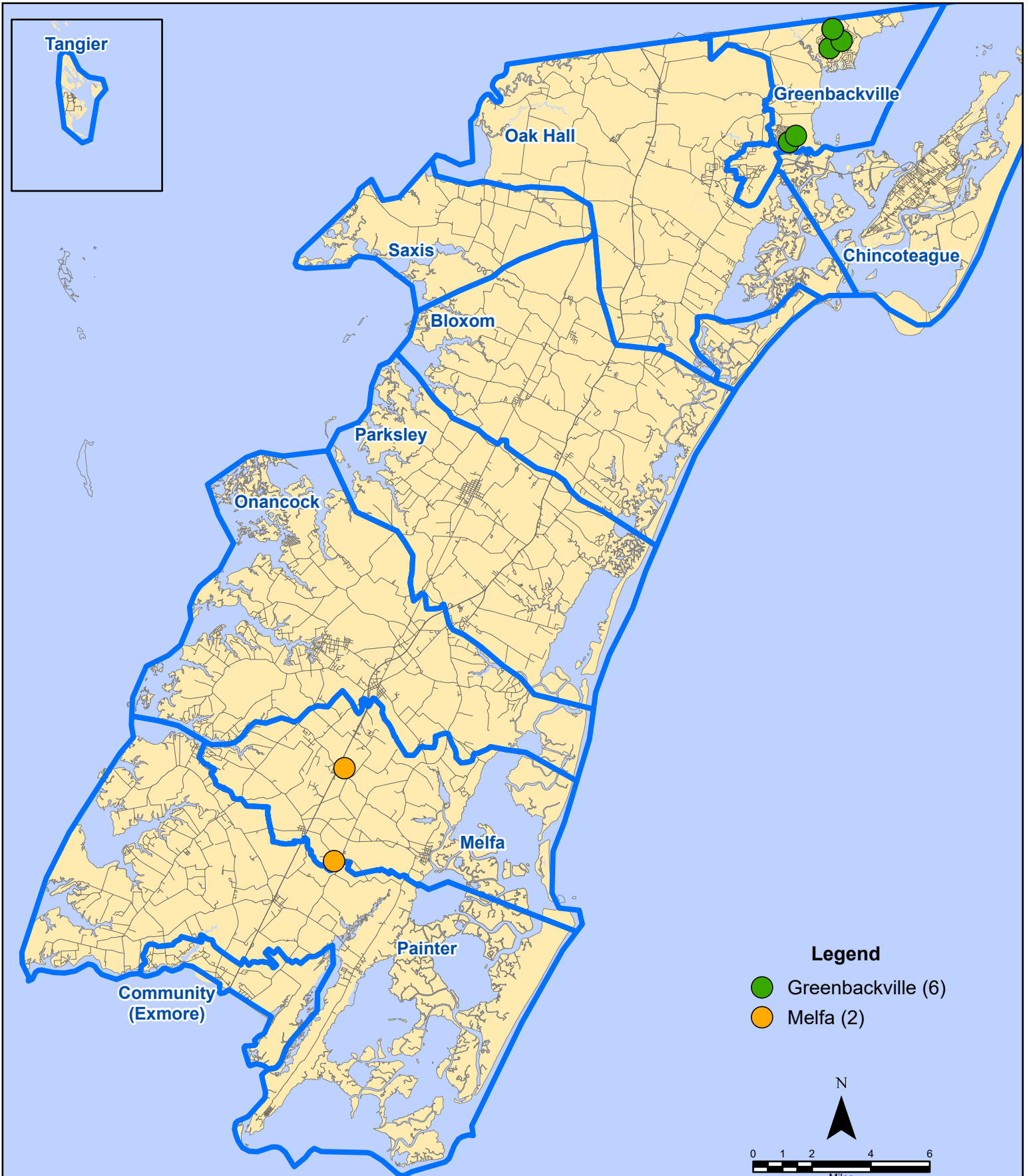
# February 2025 EMS Calls By District



All points are plotted using X and Y coordinates provided by the ESVA 911 Center.  
 Points may be plotted over one another when they are in close proximity.



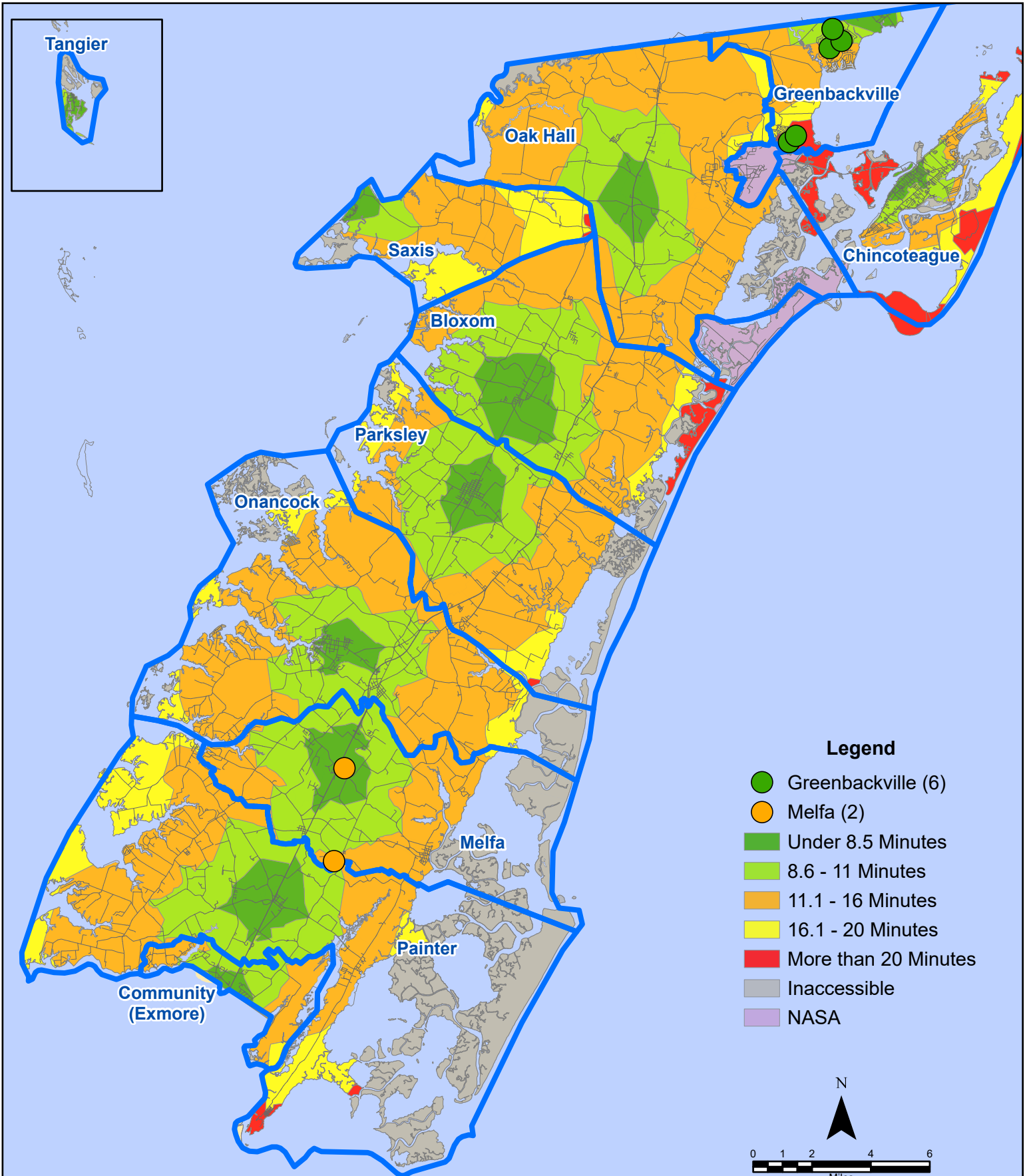
# February 2025 EMS Calls With Response Time Greater Than 20 Mins.



All points are plotted using X and Y coordinates provided by the ESVA 911 Center. Points may be plotted over one another when they are in close proximity.

Map Prepared by the Accomack County Department of Building, Planning & Economic Development using data from the ESVA 911 Center - March 13, 2025

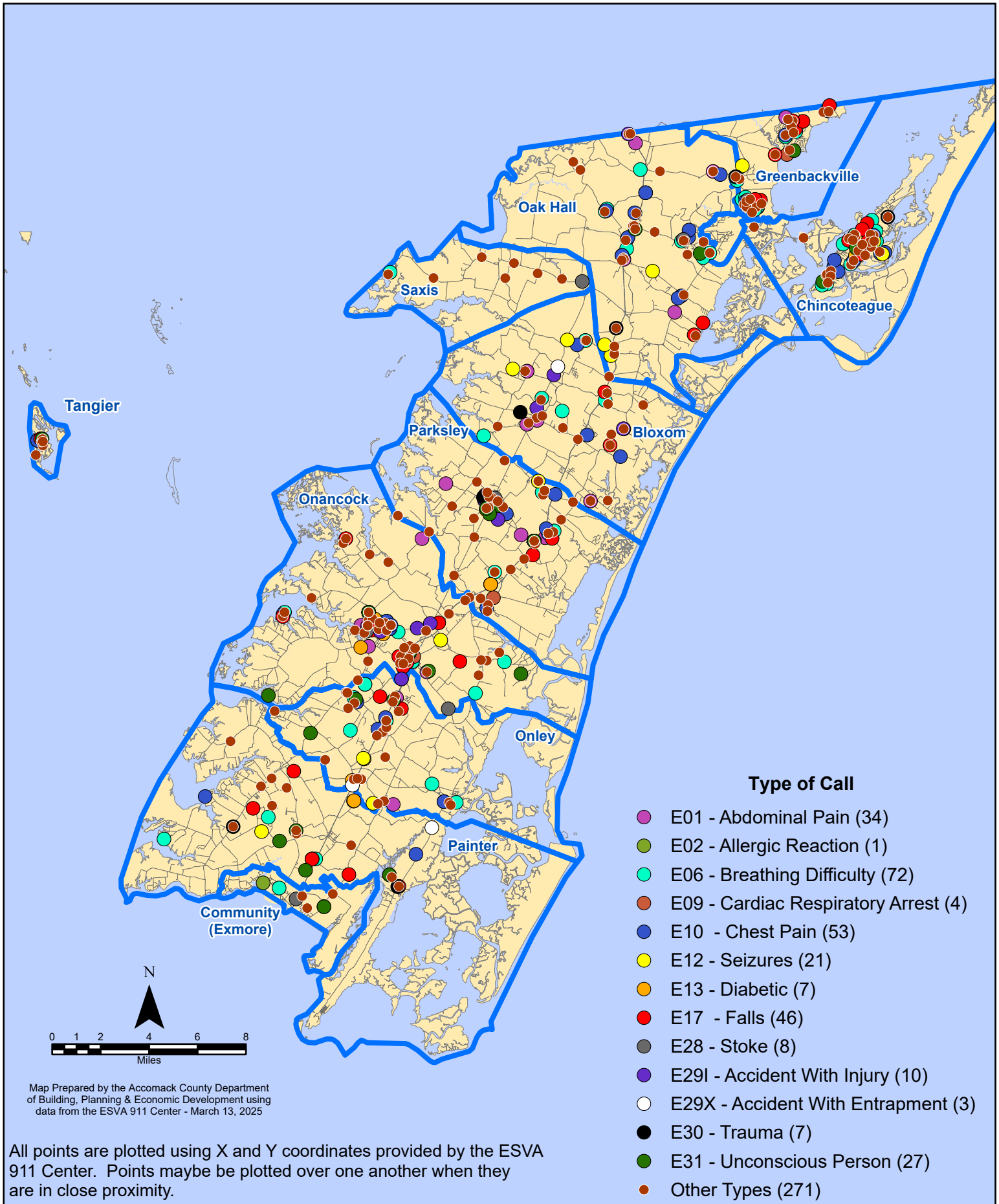
# February 2025 EMS Calls With Response Time Greater Than 20 Mins.



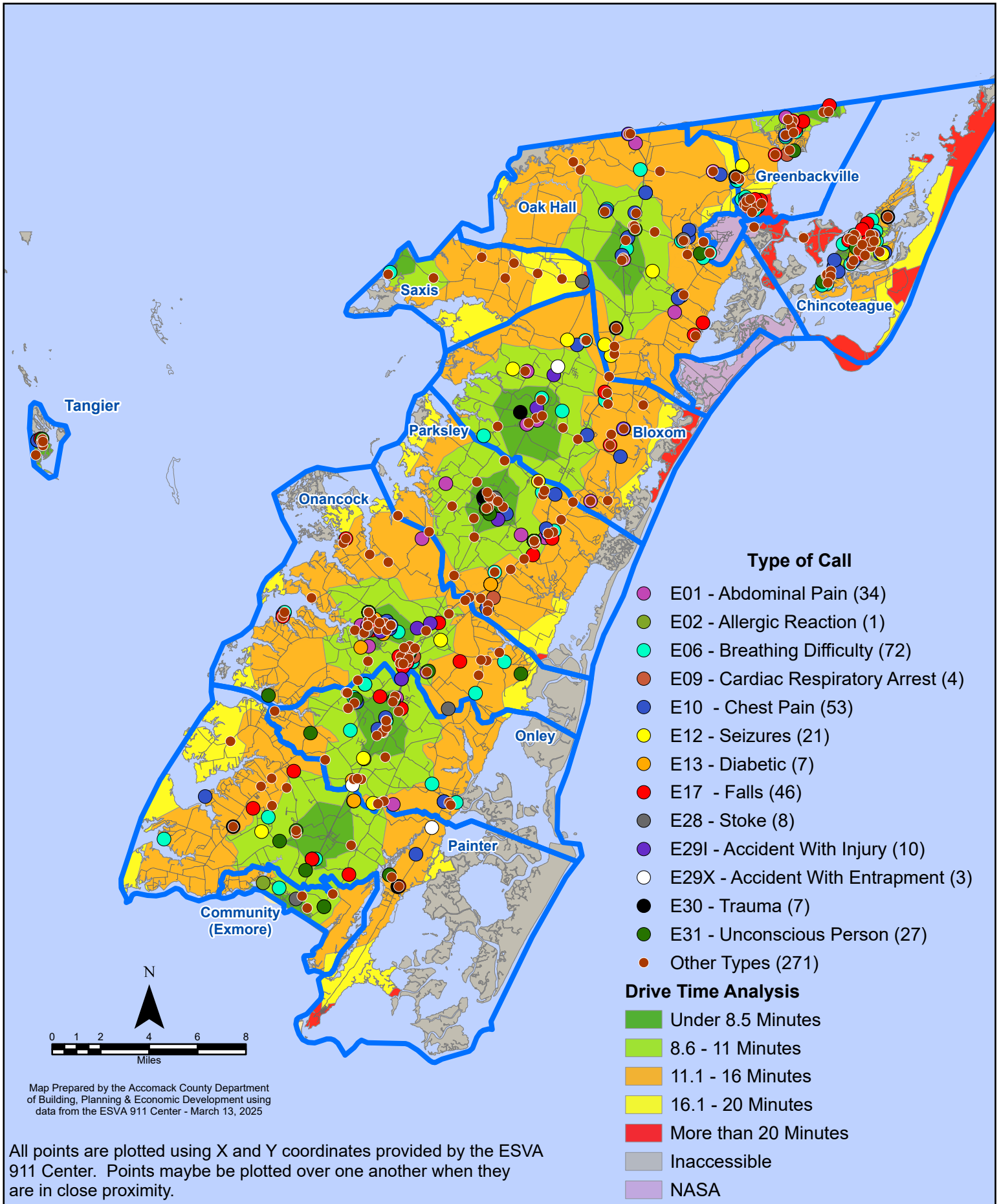
All points are plotted using X and Y coordinates provided by the ESVA 911 Center. Points may be plotted over one another when they are in close proximity.

Map Prepared by the Accomack County Department of Building, Planning & Economic Development using data from the ESVA 911 Center - March 13, 2025

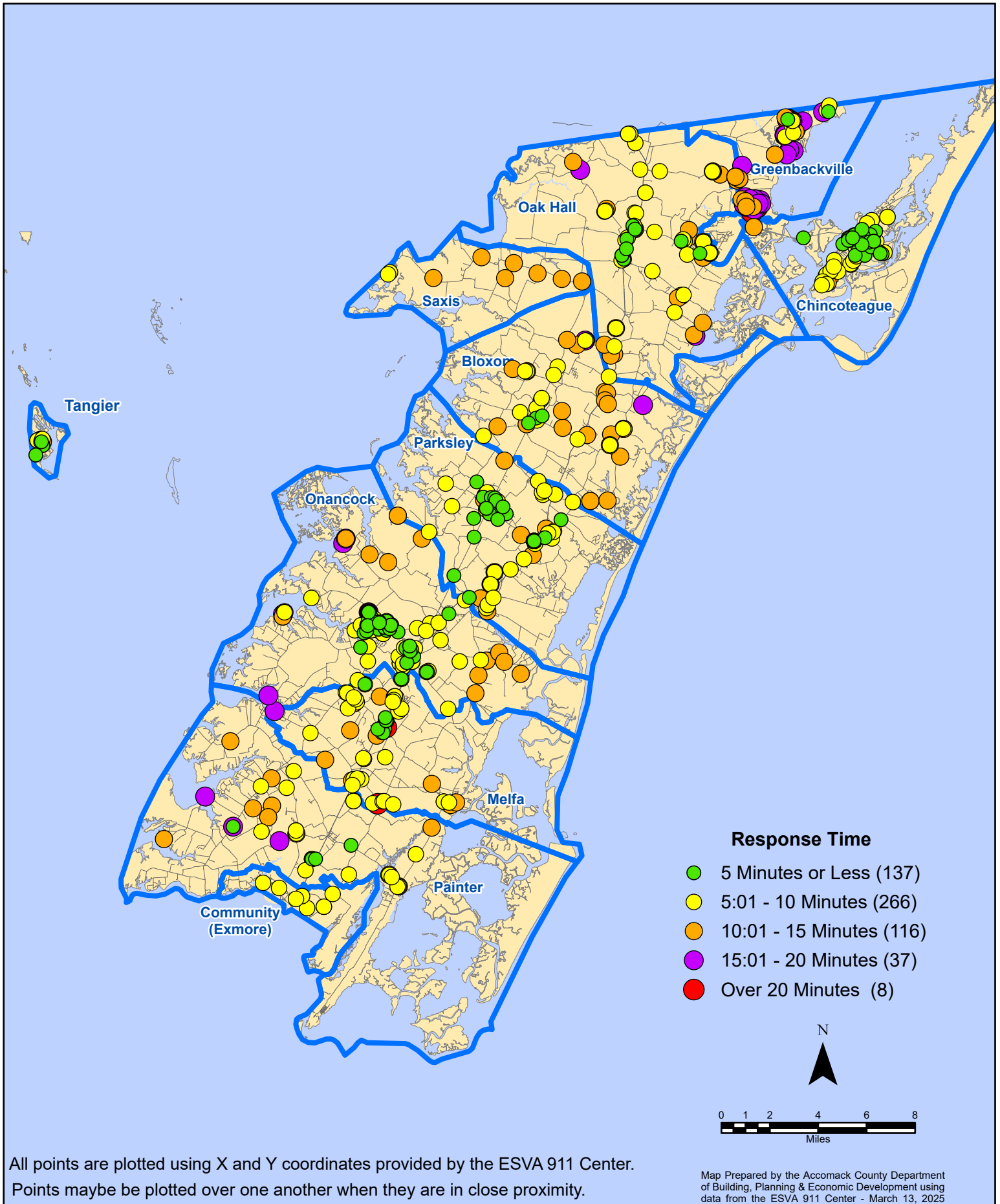
# February 2025 EMS Calls By Type



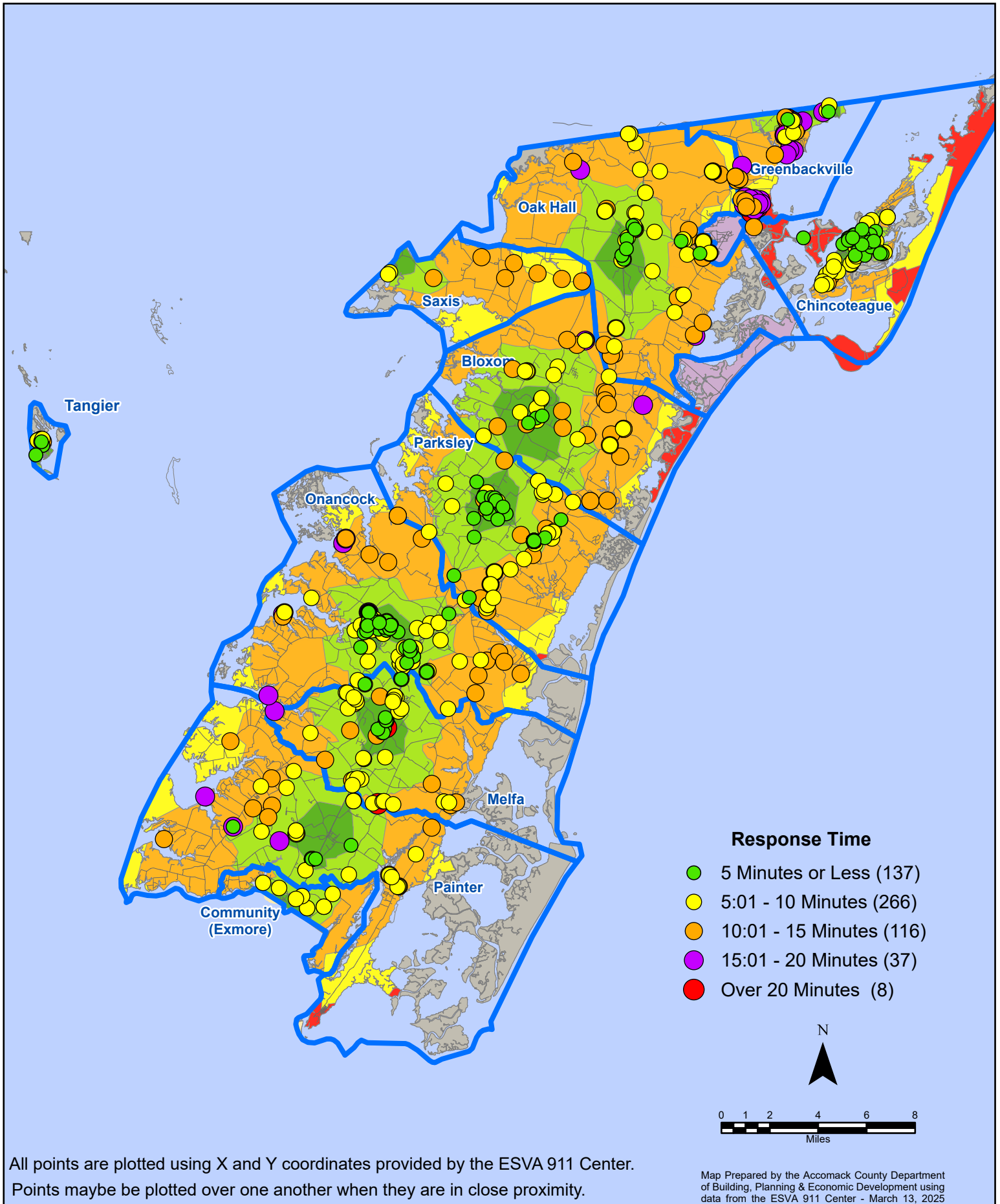
# February 2025 EMS Calls By Type



# February 2025 EMS Calls By Response Time

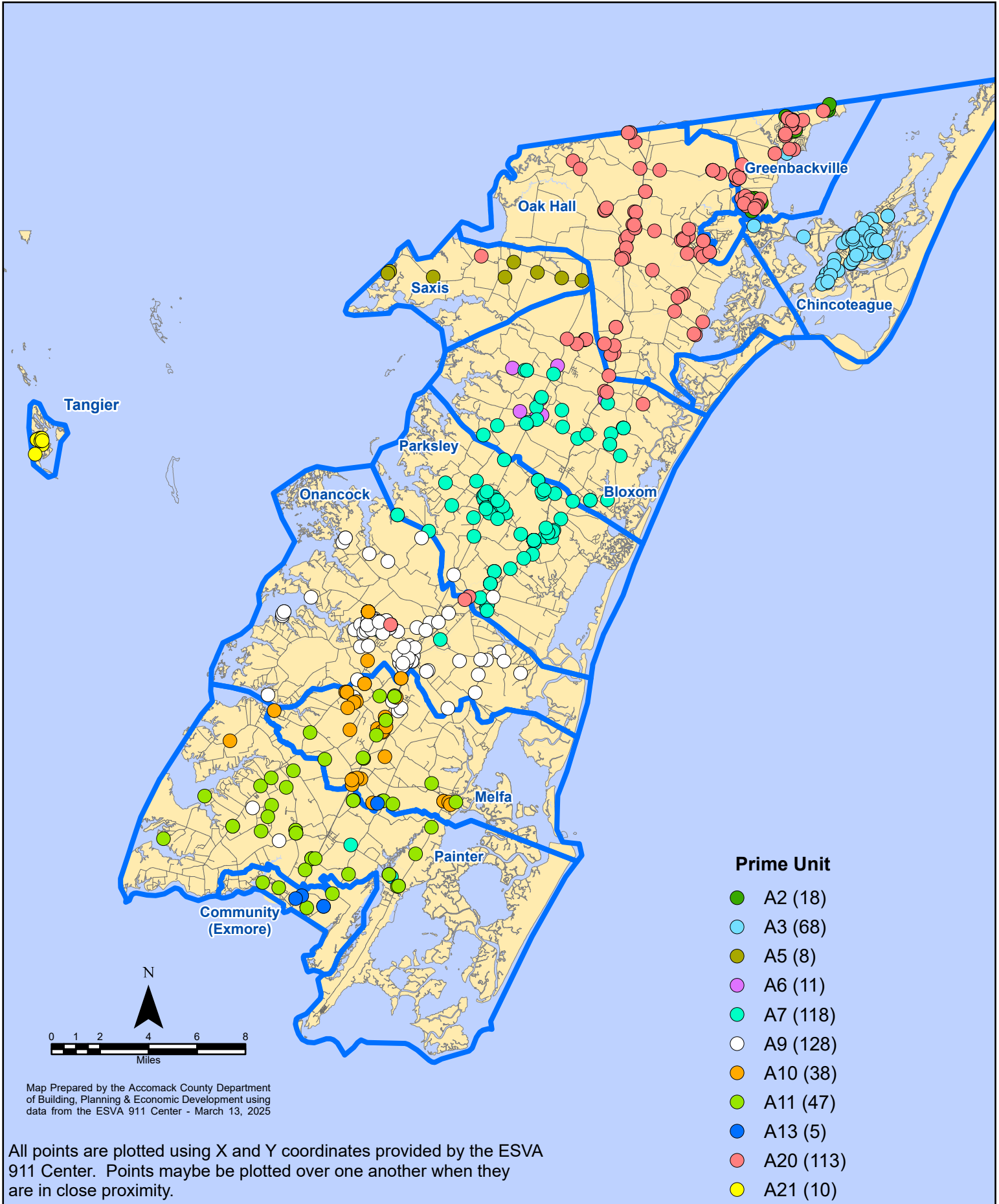


# February 2025 EMS Calls By Response Time

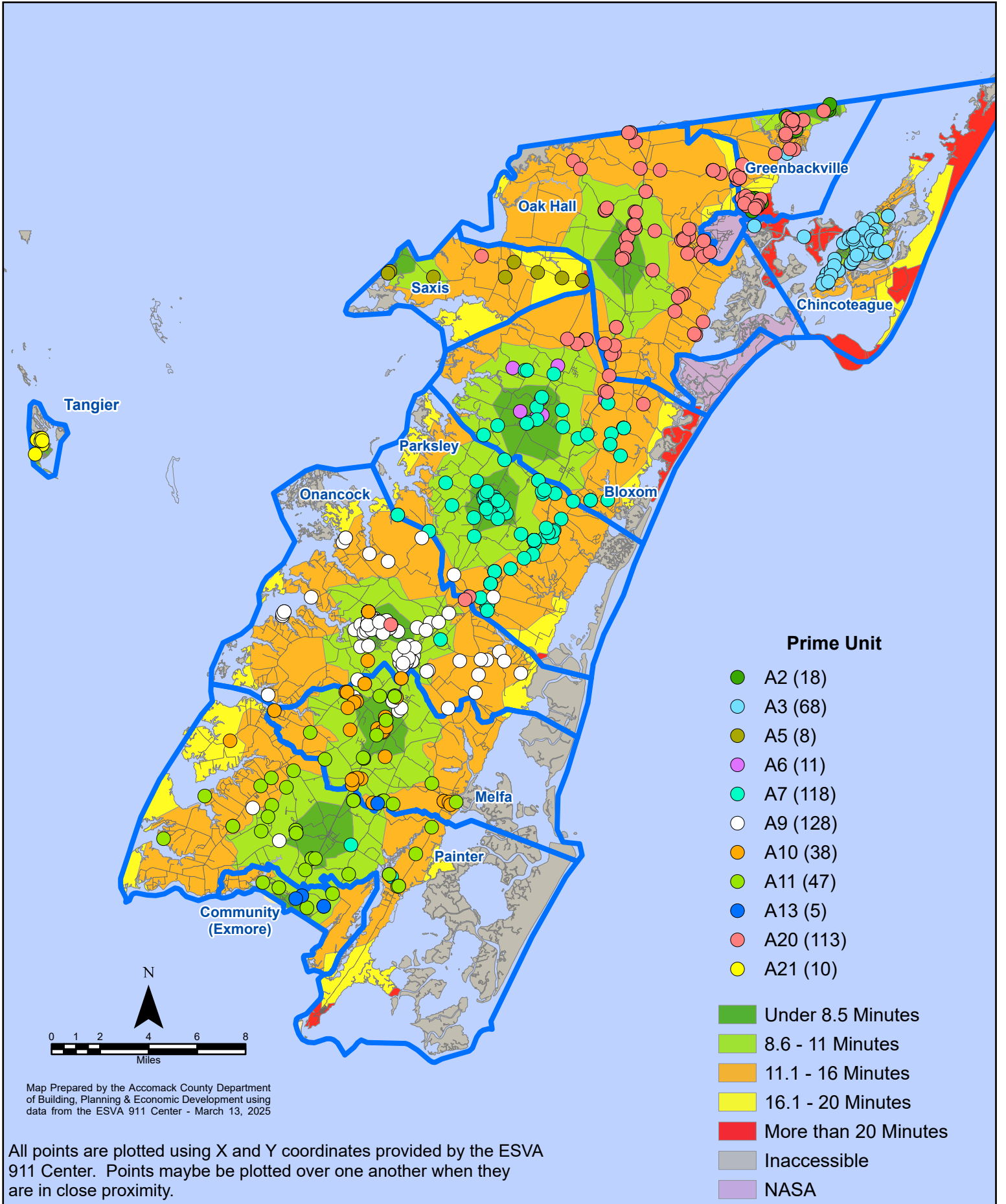


All points are plotted using X and Y coordinates provided by the ESVA 911 Center. Points may be plotted over one another when they are in close proximity.

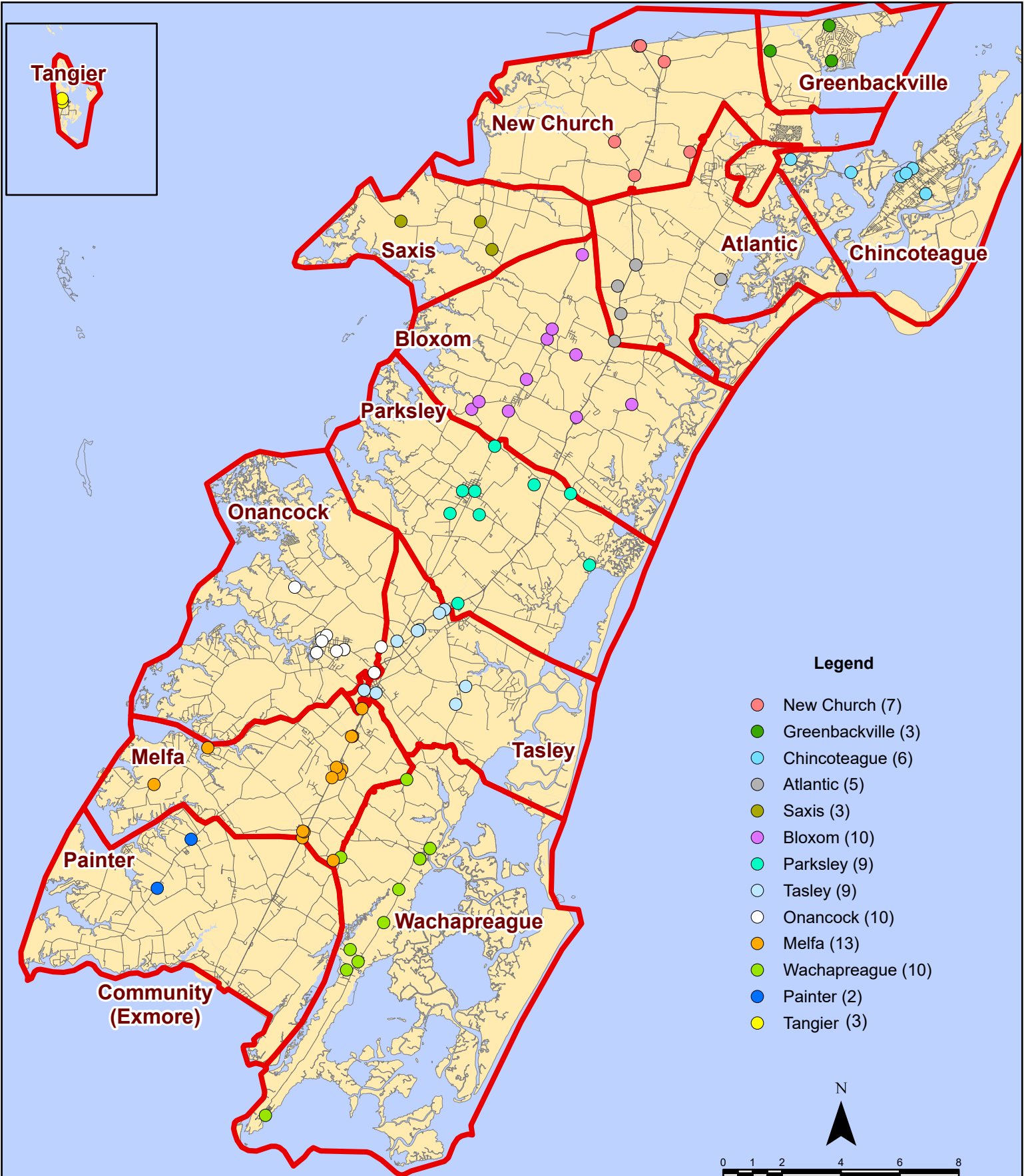
# February 2025 EMS Calls By Prime Unit



# February 2025 EMS Calls By Prime Unit



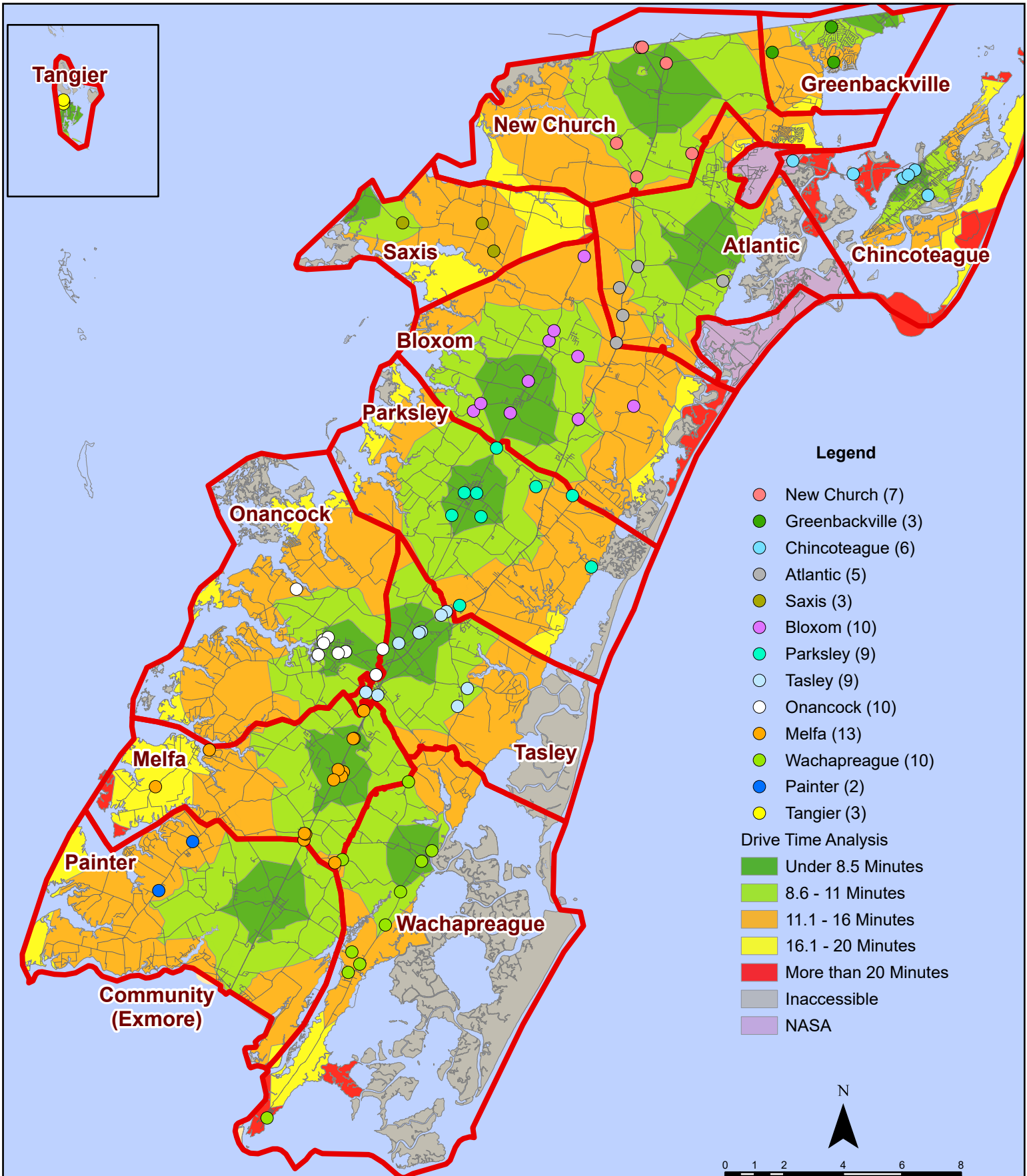
# February 2025 Fire Calls By District



All points are plotted using X and Y coordinates provided by the ESVA 911 Center.  
Points may be plotted over one another when they are in close proximity.

Map Prepared by the Accomack County Department of Building, Planning & Economic Development using data from the ESVA 911 Center - March 13, 2025

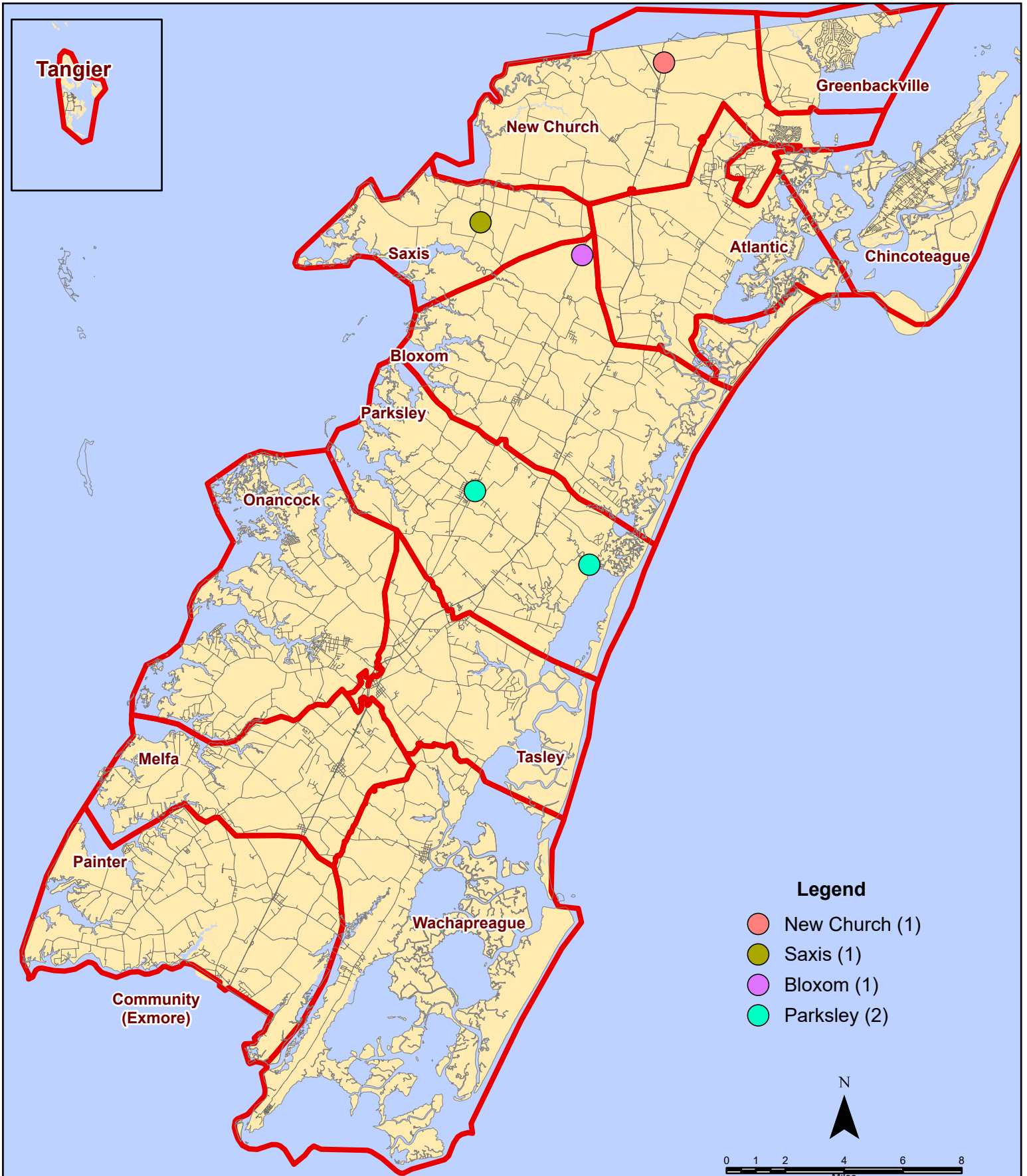
# February 2025 Fire Calls By District



All points are plotted using X and Y coordinates provided by the ESVA 911 Center. Points may be plotted over one another when they are in close proximity.

Map Prepared by the Accomack County Department of Building, Planning & Economic Development using data from the ESVA 911 Center - March 13, 2025

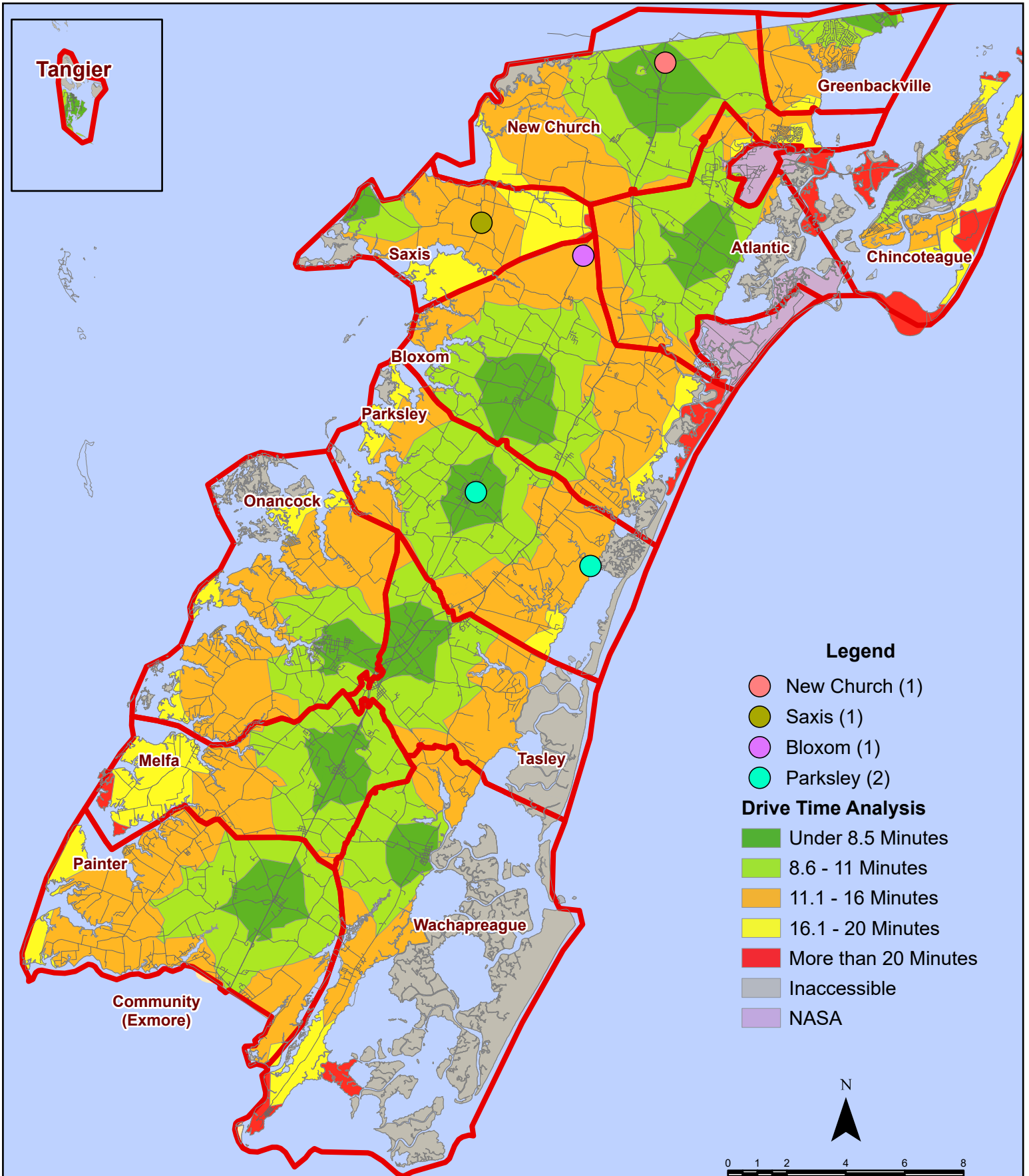
# February 2025 Fire Calls With Response Time Greater Than 20 Mins.



All points are plotted using X and Y coordinates provided by the ESVA 911 Center.  
Points may be plotted over one another when they are in close proximity.

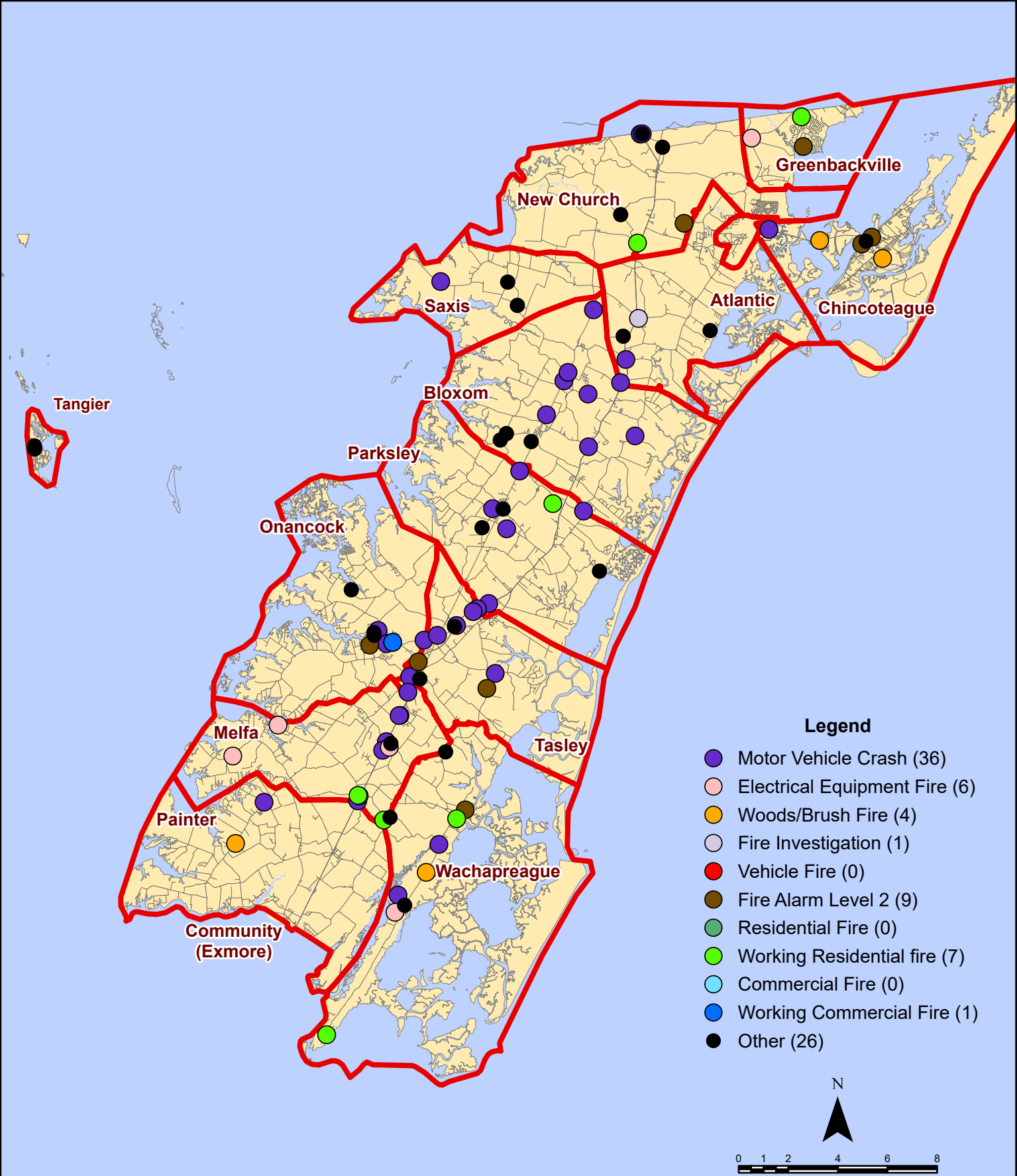
Map Prepared by the Accomack County Department of Building, Planning & Economic Development using data from the ESVA 911 Center - March 13, 2025

# February 2025 Fire Calls With Response Time Greater Than 20 Mins.



All points are plotted using X and Y coordinates provided by the ESVA 911 Center. Points may be plotted over one another when they are in close proximity.

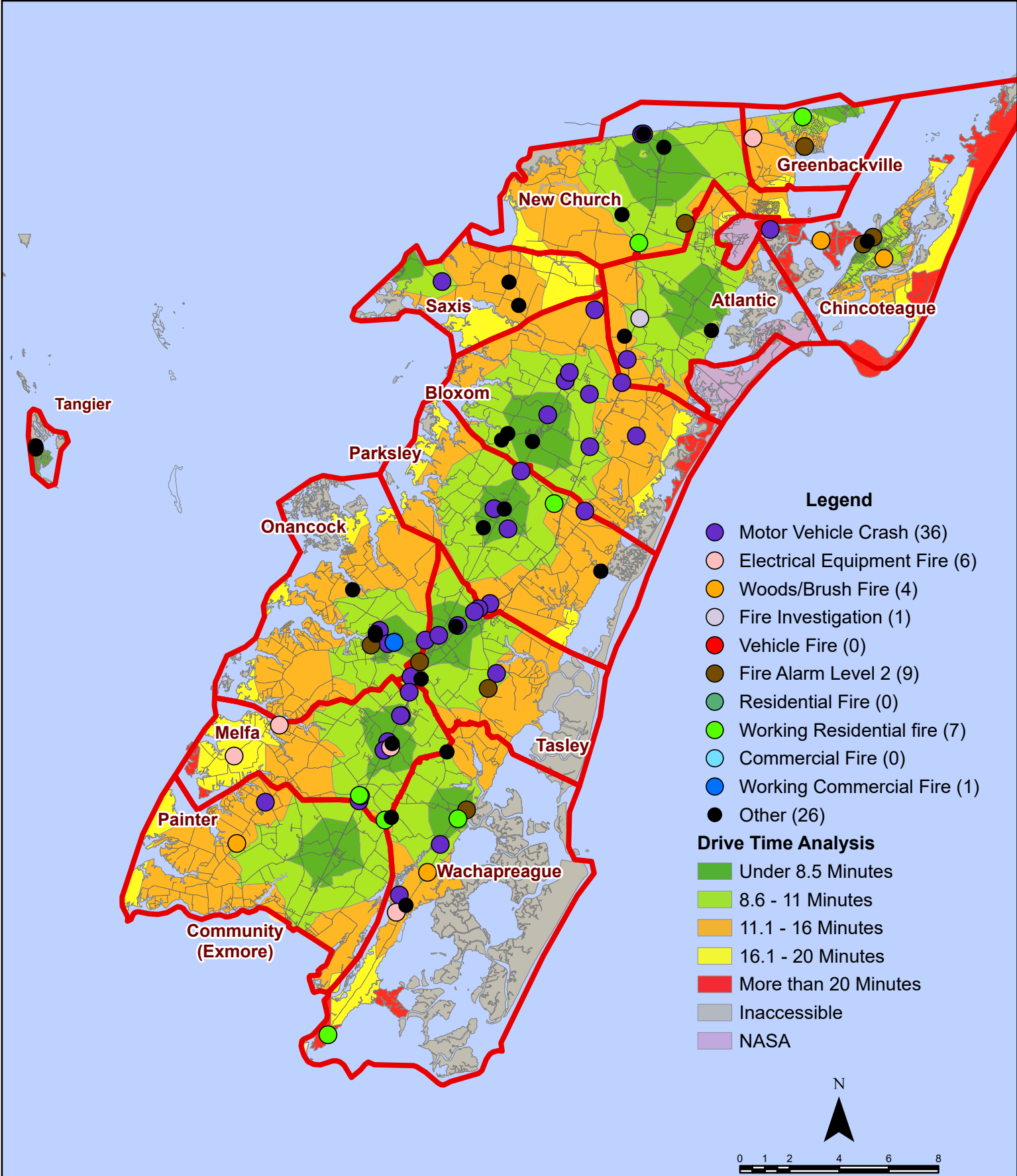
# February 2025 Fire Calls By Type



All points are plotted using X and Y coordinates provided by the ESVA 911 Center. Points may be plotted over one another when they are in close proximity.

Map Prepared by the Accomack County Department of Building, Planning & Economic Development using data from the ESVA 911 Center - March 13, 2025

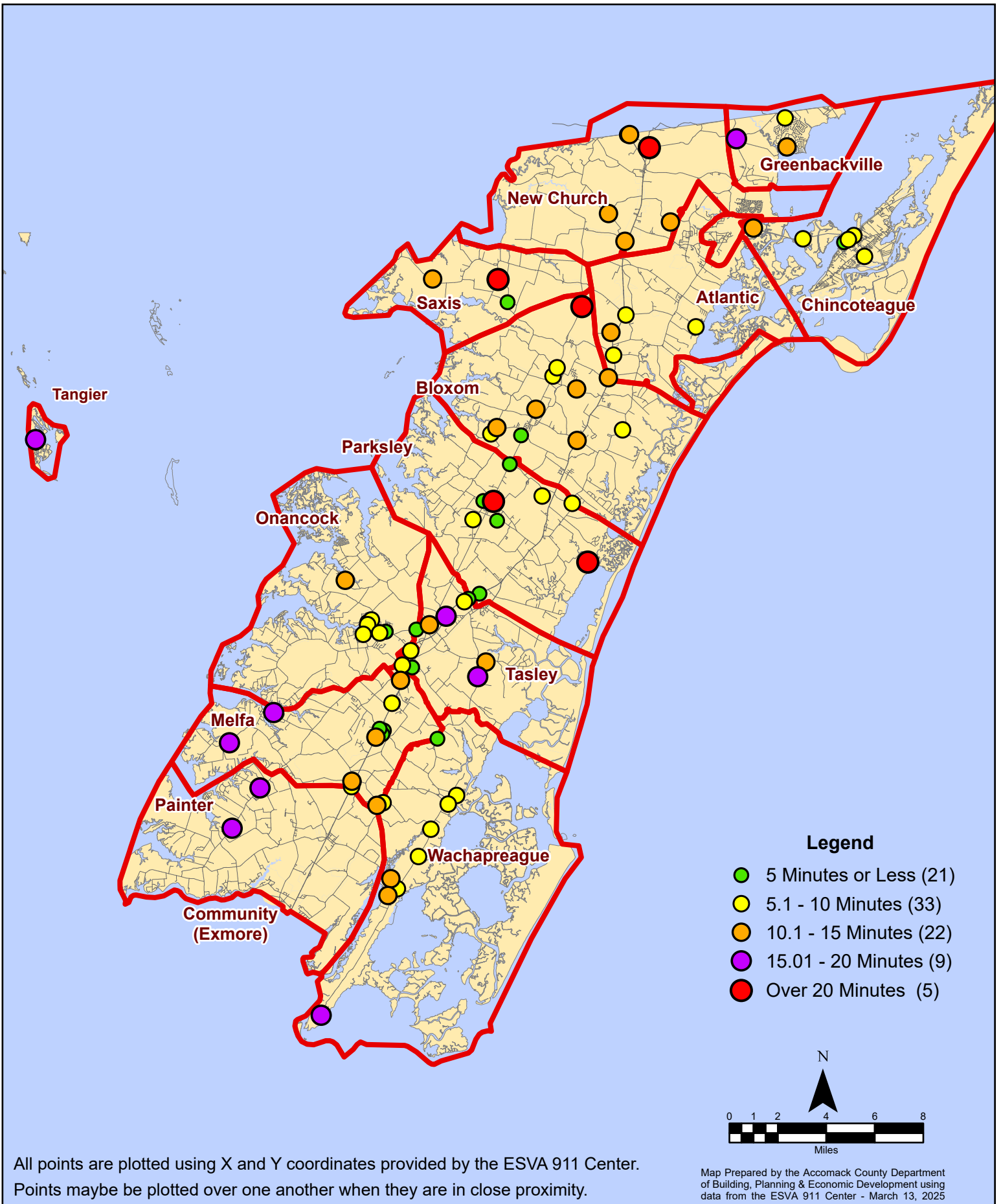
# February 2025 Fire Calls By Type



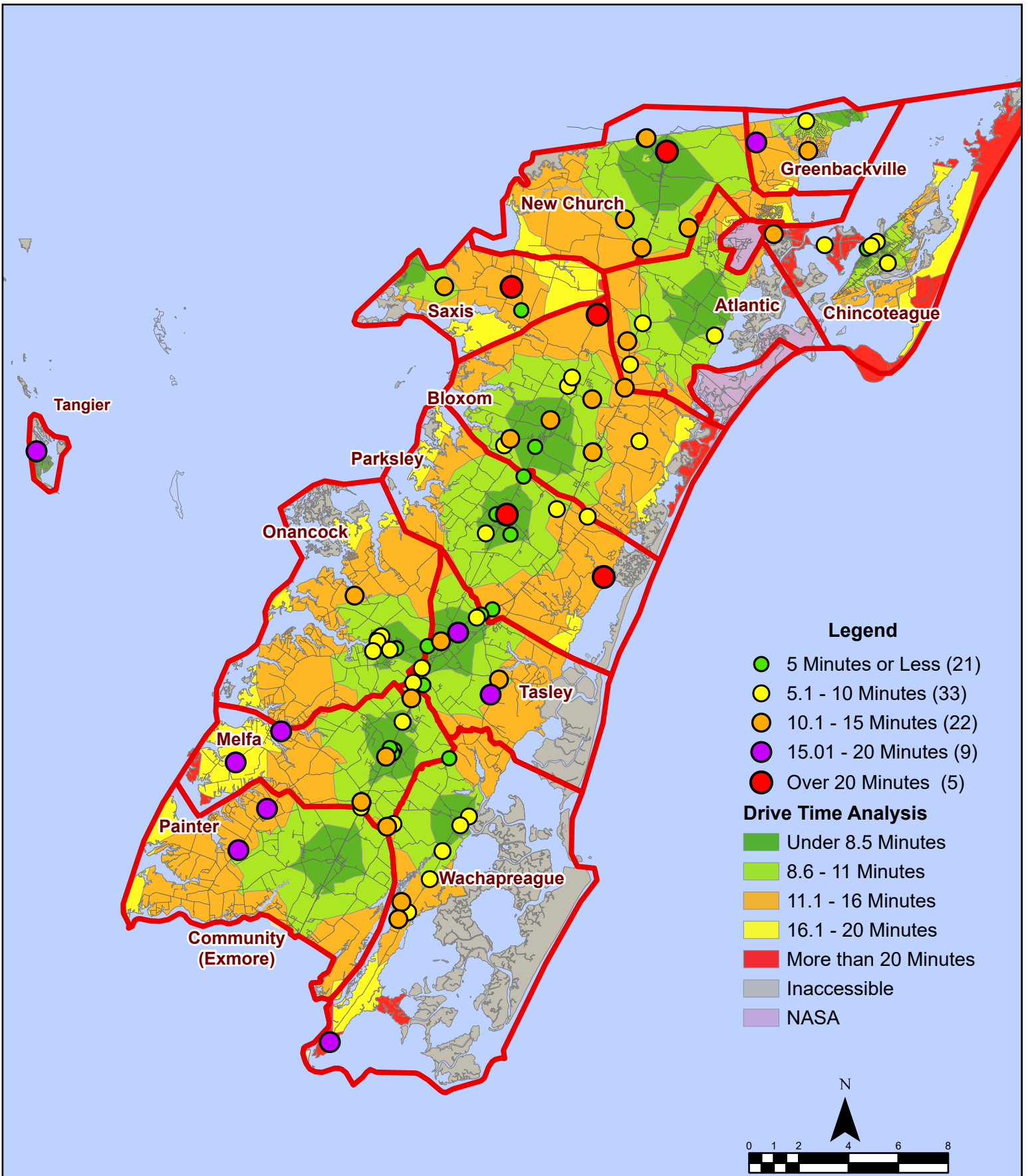
All points are plotted using X and Y coordinates provided by the ESVA 911 Center. Points may be plotted over one another when they are in close proximity.

Map Prepared by the Accomack County Department of Building, Planning & Economic Development using data from the ESVA 911 Center - March 13, 2025

# February 2025 Fire Calls By Response Time



# February 2025 Fire Calls By Response Time



All points are plotted using X and Y coordinates provided by the ESVA 911 Center. Points may be plotted over one another when they are in close proximity.

Map Prepared by the Accomack County Department of Building, Planning & Economic Development using data from the ESVA 911 Center - March 13, 2025