

April 2024

Fire - Performance Measure Data *					
Response District	Total Calls In District	Greater than 20 min. Response Time	Longest Response Time	Calls Handled by other agency	Overall Station Benchmark %
New Church	10	1	0:30:02	1	90.0%
Greenbackville	5	0	0:17:57	1	100.0%
Chincoteague	3	0	0:11:46	0	100.0%
Atlantic	5	0	0:18:49	1	100.0%
Saxis	0	0	0	0	#DIV/0!
Bloxom	10	0	0:16:00	3	100.0%
Parksley	16	1	0:26:25	4	93.8%
Tasley	11	0	0:18:51	2	100.0%
Onancock	9	0	0:17:52	0	100.0%
Melfa	10	0	0:11:35	4	100.0%
Wachapreague	0	0	0	0	#DIV/0!
Painter	4	0	0:12:56	0	100.0%
Tangier	1	0	0:10:37	0	100.0%
System Totals	84	2	0:30:02	16	97.6%

EMS - Performance Measure Data						
Response District	Total Calls in District	Greater than 20 min. Response Time	Longest Response Time	Calls Handled by other agency	Station Benchmark Compliance %	Overall Station Reliability %
Greenbackville	58	5	0:28:44	29	91.4%	50.0%
Chincoteague	74	0	0:17:53	1	100.0%	98.6%
Saxis	9	0	0:16:55	2	100.0%	77.8%
Bloxom	53	1	0:27:07	45	98.1%	15.1%
Parksley	90	0	0:14:53	9	100.0%	90.0%
Onancock	80	0	0:15:27	3	100.0%	96.3%
Melfa	64	2	0:26:04	18	96.9%	71.9%
Wachapreague (Painter)	47	0	0:17:42	3	100.0%	93.6%
Oak Hall	77	4	0:29:45	4	94.8%	94.8%
Tangier	13	1	0:33:59	0	92.3%	100.0%
Community (Exmore)	5	0	0:09:28	0	100.0%	100.0%
System Totals	570	13	0:33:59	114	97.7%	80.0%

EMS Mutual Aid Data															
	Station Giving Aid														
	Greenbackville	Chincoteague	Saxis	Bloxom	Parksley	Onancock	Melfa	Wachapreague/Painter	Oak Hall	Community (Exmore)	Northampton	Wallops	NORS	2nd Call	3rd Call
Greenbackville	2							27					27	2	
Chincoteague								1						1	
Saxis								2					2		
Bloxom		4		34				7					45		
Parksley		5			1			3					2	7	
Onancock				3		4							3		
Melfa						4	14						18		
Wachapreague (Painter)							2		1				1	1	1
Oak Hall		3		1									3	1	
Community (Exmore)															
Northampton Co.															
Wallops															
Totals	0	5	9	0	38	5	2	14	40	1	0	0	98	15	1

Station Receiving Aid

Transport Destination			
Hospital Destination by Unit	Riverside - Shore Memorial	PRMC / Total Health	Other
Chincoteague	23	21	
Saxis	11	2	
Bloxom	6		
Parksley	74	1	1
Onancock	46	2	1
Melfa	24		
Wachapreague (Painter)	45		
Oak Hall	58	23	1
Wallops			
Totals	295	63	3

Benchmark = The Accomack County Board of Supervisors established a 20 minute standard for emergency response.

NORS = No Response by station or the call was handled by another station or agency.

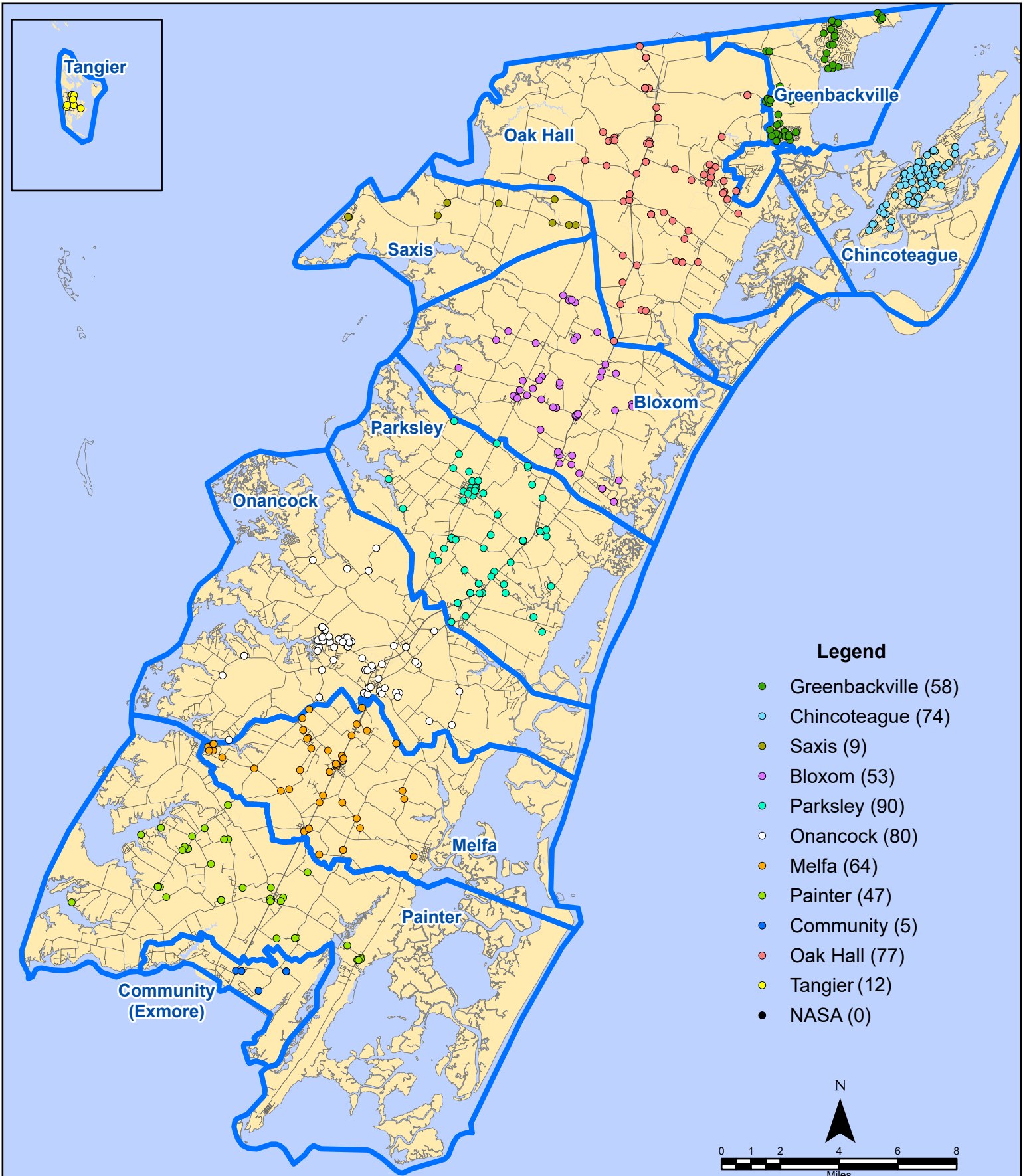
2nd Call = 2nd ambulance call received while first ambulance was on another call.

3rd Call = 3rd ambulance call received while first & second ambulances were on other calls.

* This data excludes F1 Med (Medical Assist) calls in the Fire Data.

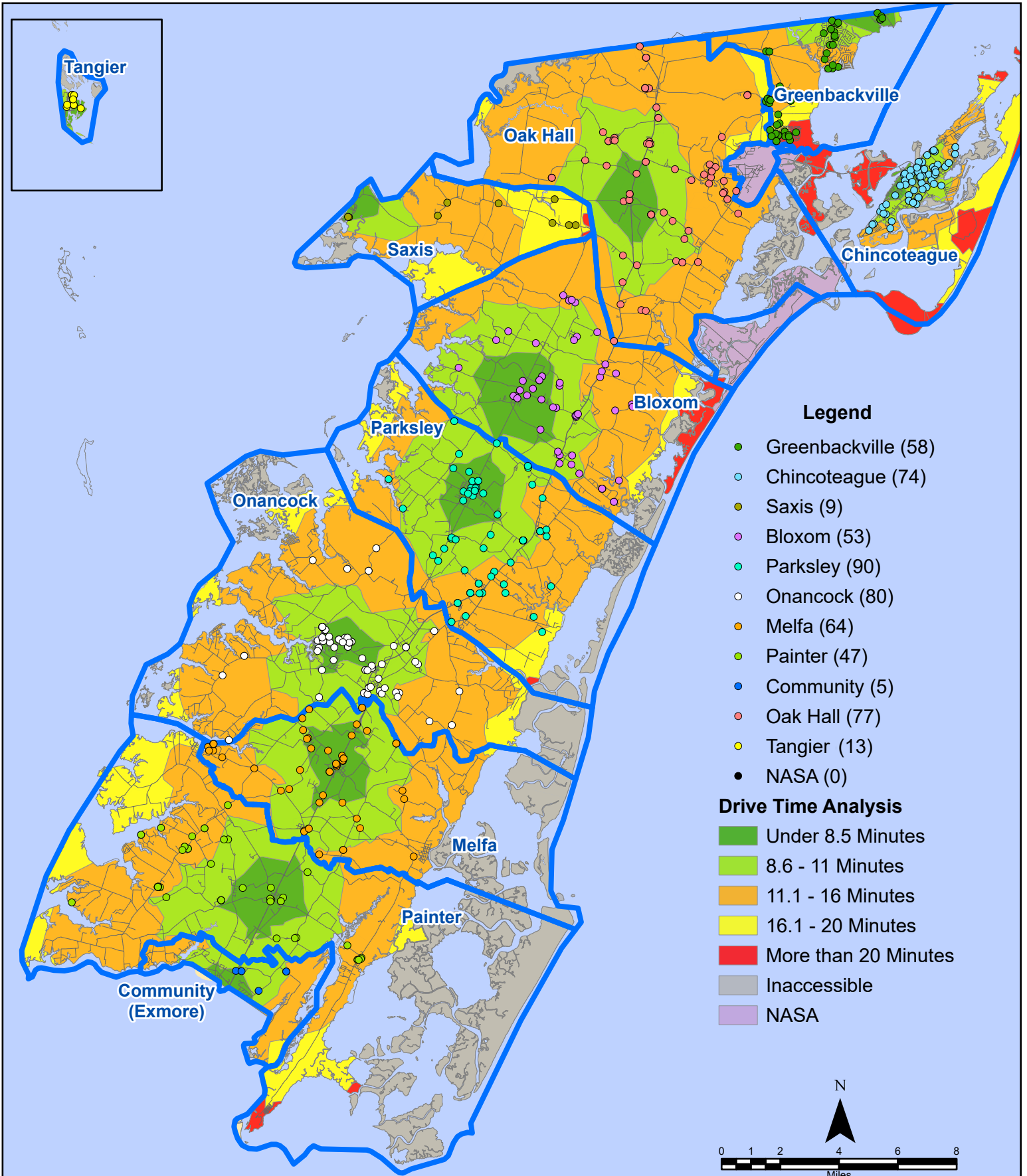
This information was prepared using data supplied by the Eastern Shore of Virginia 911 Center. This information is original incident data only and may not be representative of all units and/or stations who responded to an incident.

April 2024 EMS Calls By District

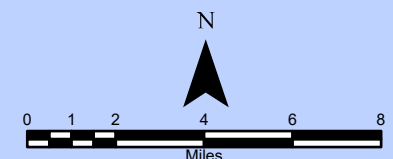


All points are plotted using X and Y coordinates provided by the ESVA 911 Center.
Points may be plotted over one another when they are in close proximity.

April 2024 EMS Calls By District

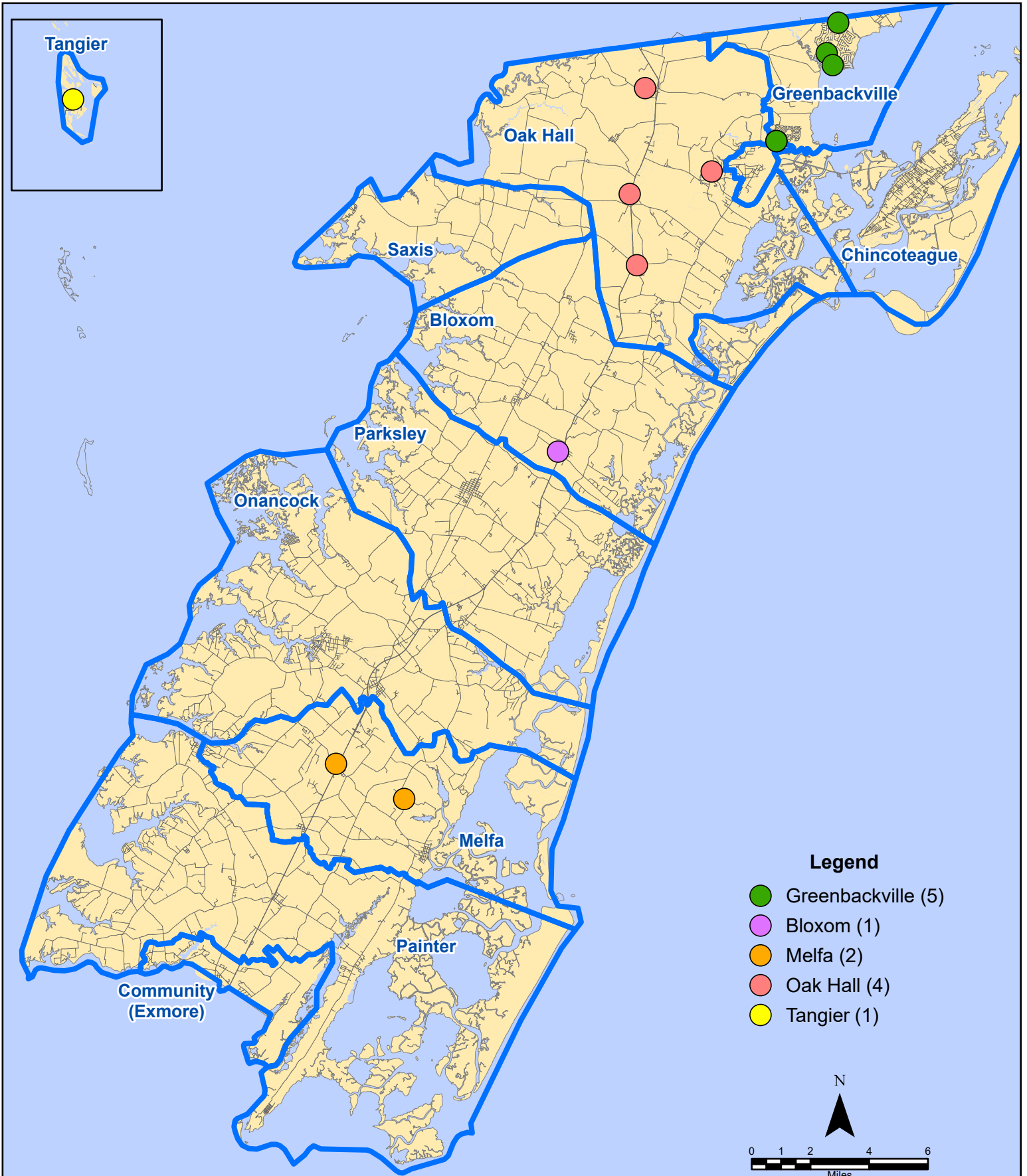


All points are plotted using X and Y coordinates provided by the ESVA 911 Center. Points may be plotted over one another when they are in close proximity.



Map Prepared by the Accomack County Department of Building, Planning & Economic Development using data from the ESVA 911 Center - May 31, 2024

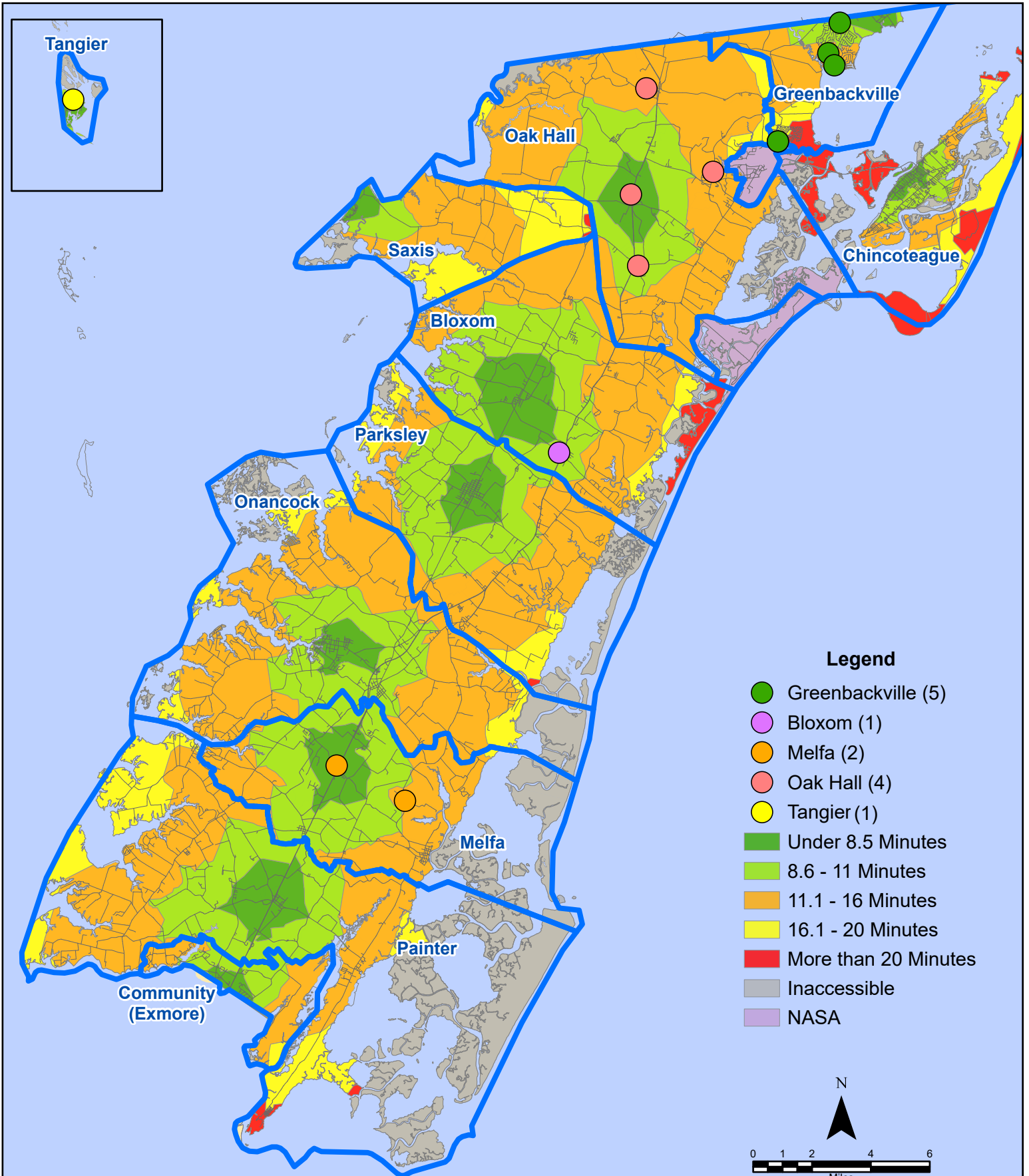
April 2024 EMS Calls With Response Time Greater Than 20 Mins.



All points are plotted using X and Y coordinates provided by the ESVA 911 Center. Points may be plotted over one another when they are in close proximity.

Map Prepared by the Accomack County Department of Building, Planning & Economic Development using data from the ESVA 911 Center - May 31, 2024

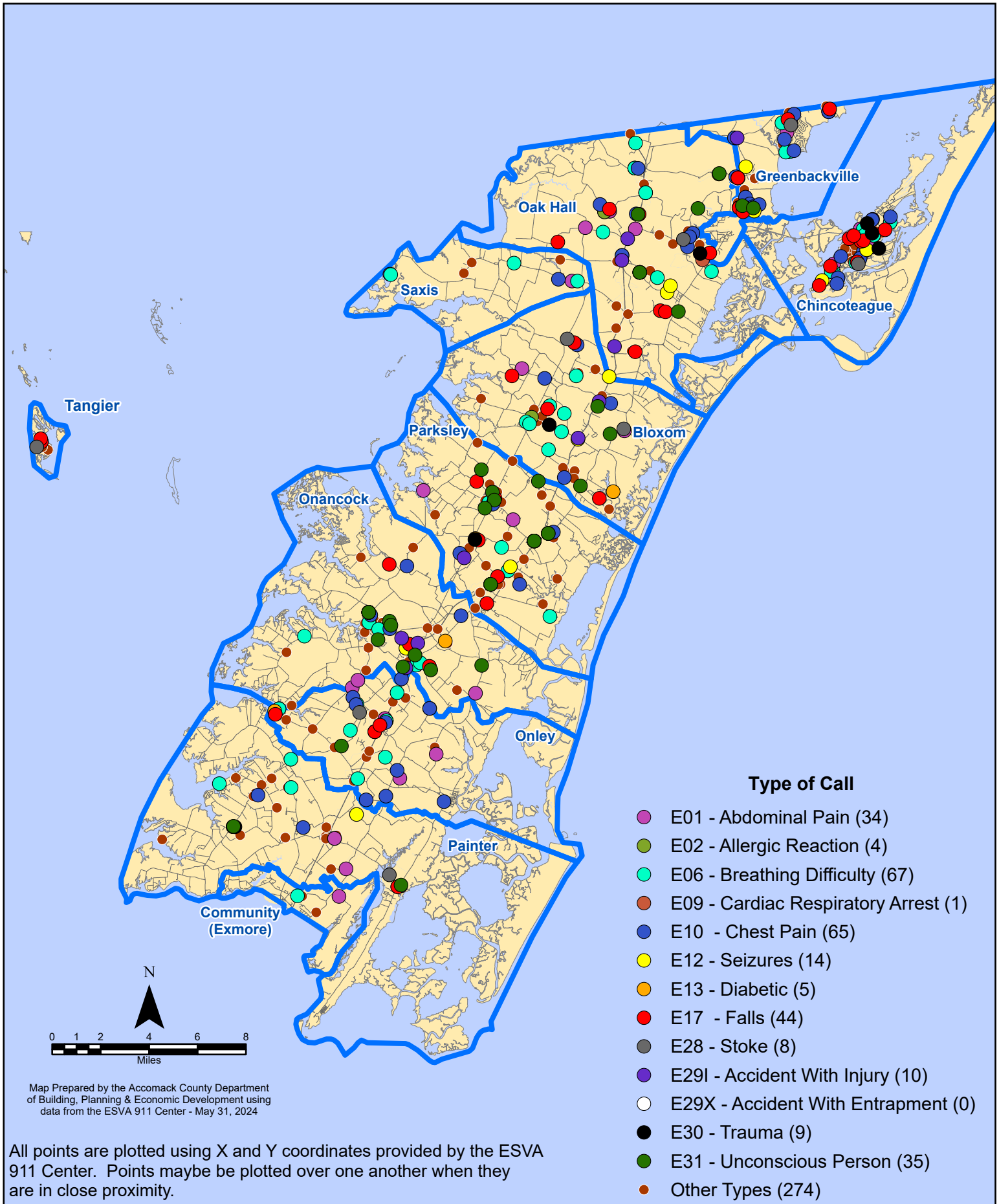
April 2024 EMS Calls With Response Time Greater Than 20 Mins.



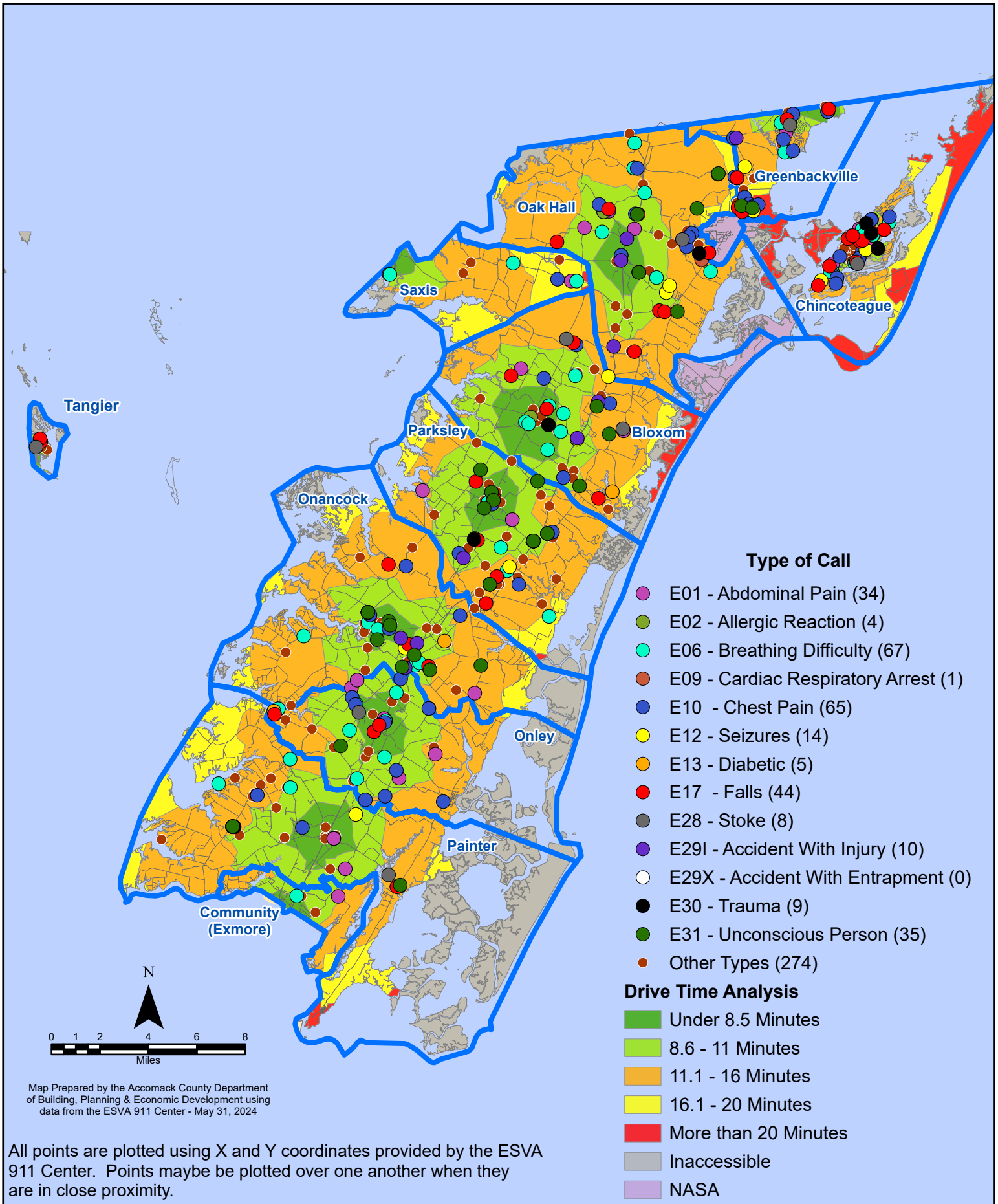
All points are plotted using X and Y coordinates provided by the ESVA 911 Center. Points may be plotted over one another when they are in close proximity.

Map Prepared by the Accomack County Department of Building, Planning & Economic Development using data from the ESVA 911 Center - May 31, 2024

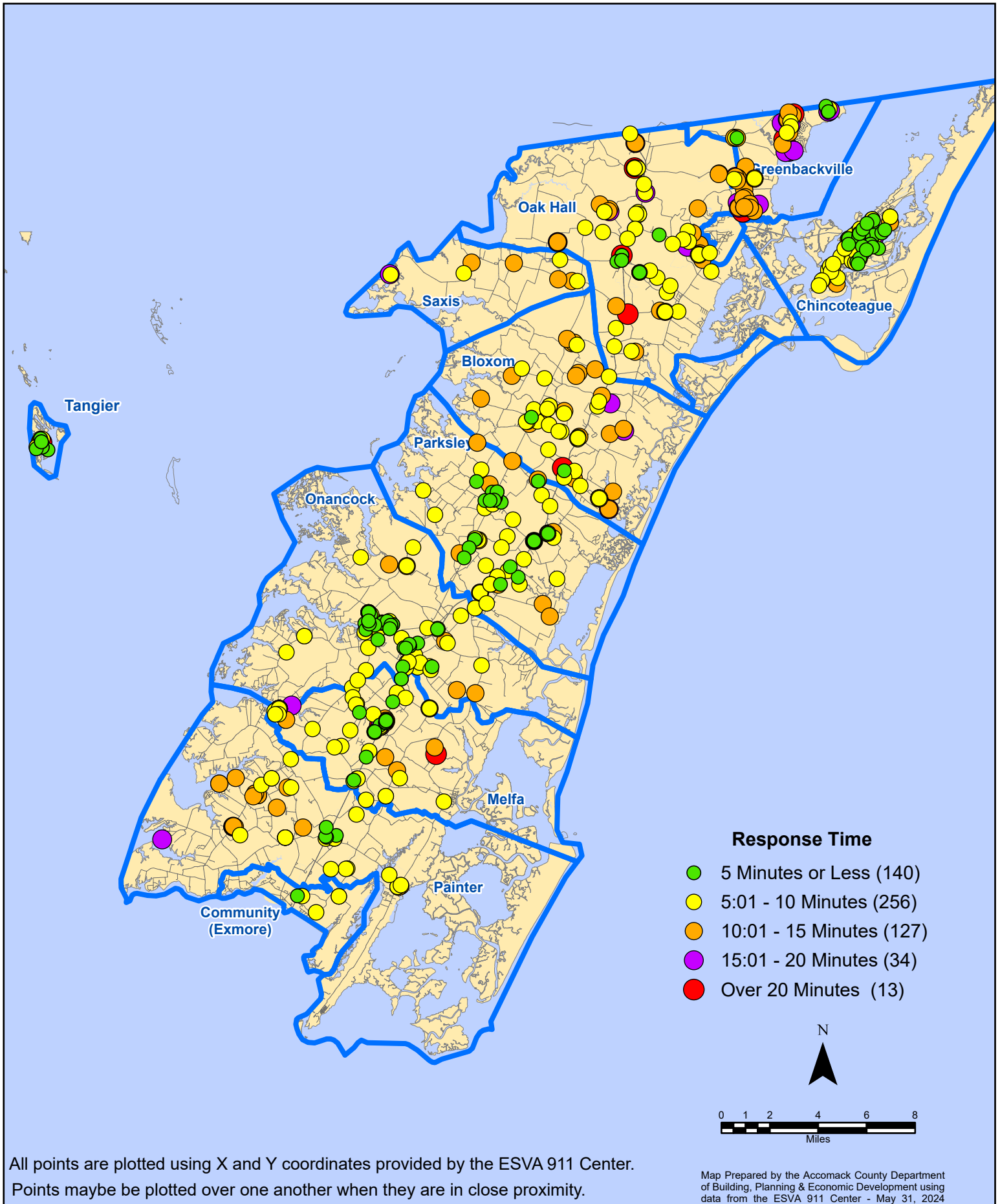
April 2024 EMS Calls By Type



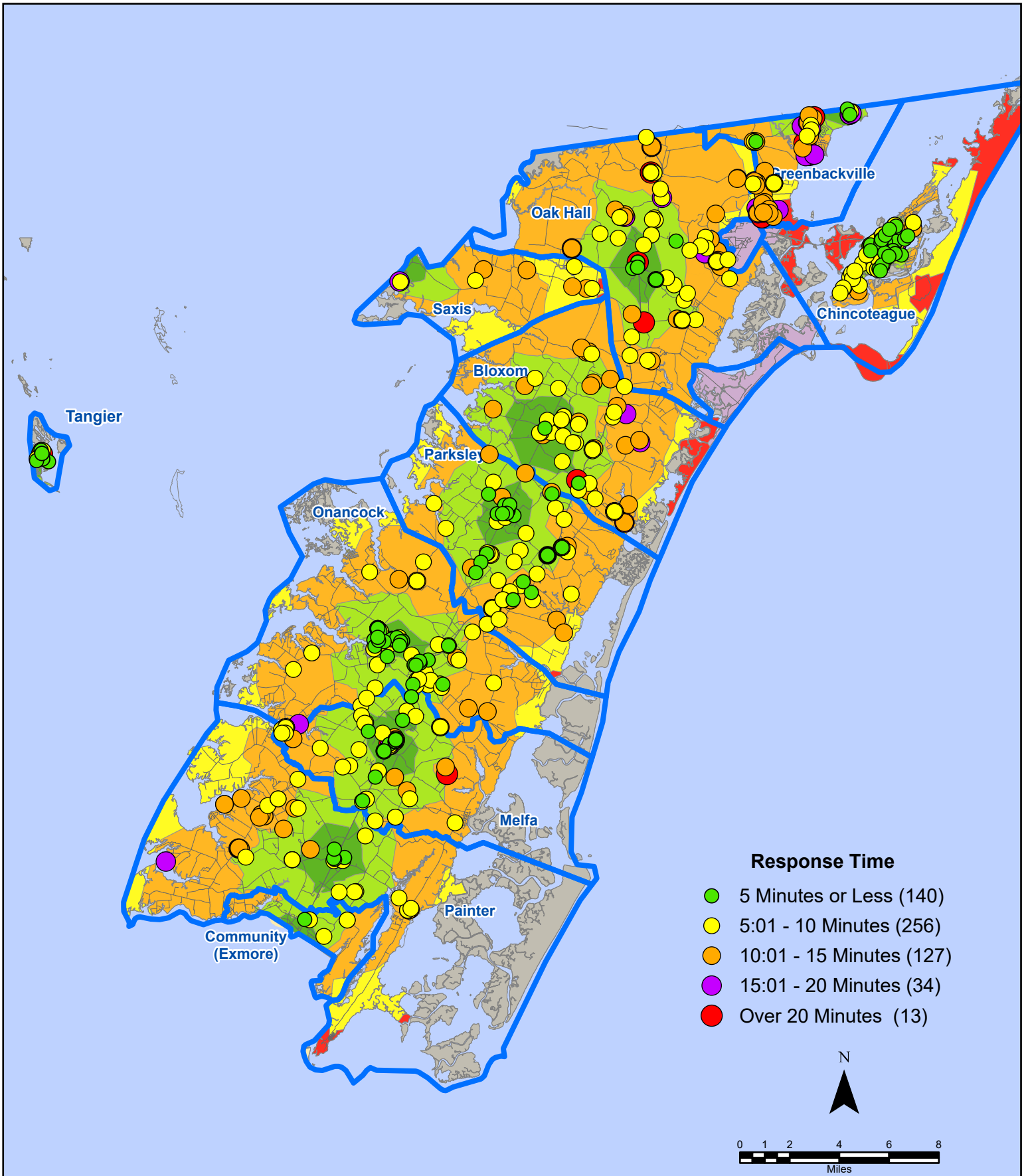
April 2024 EMS Calls By Type



April 2024 EMS Calls By Response Time



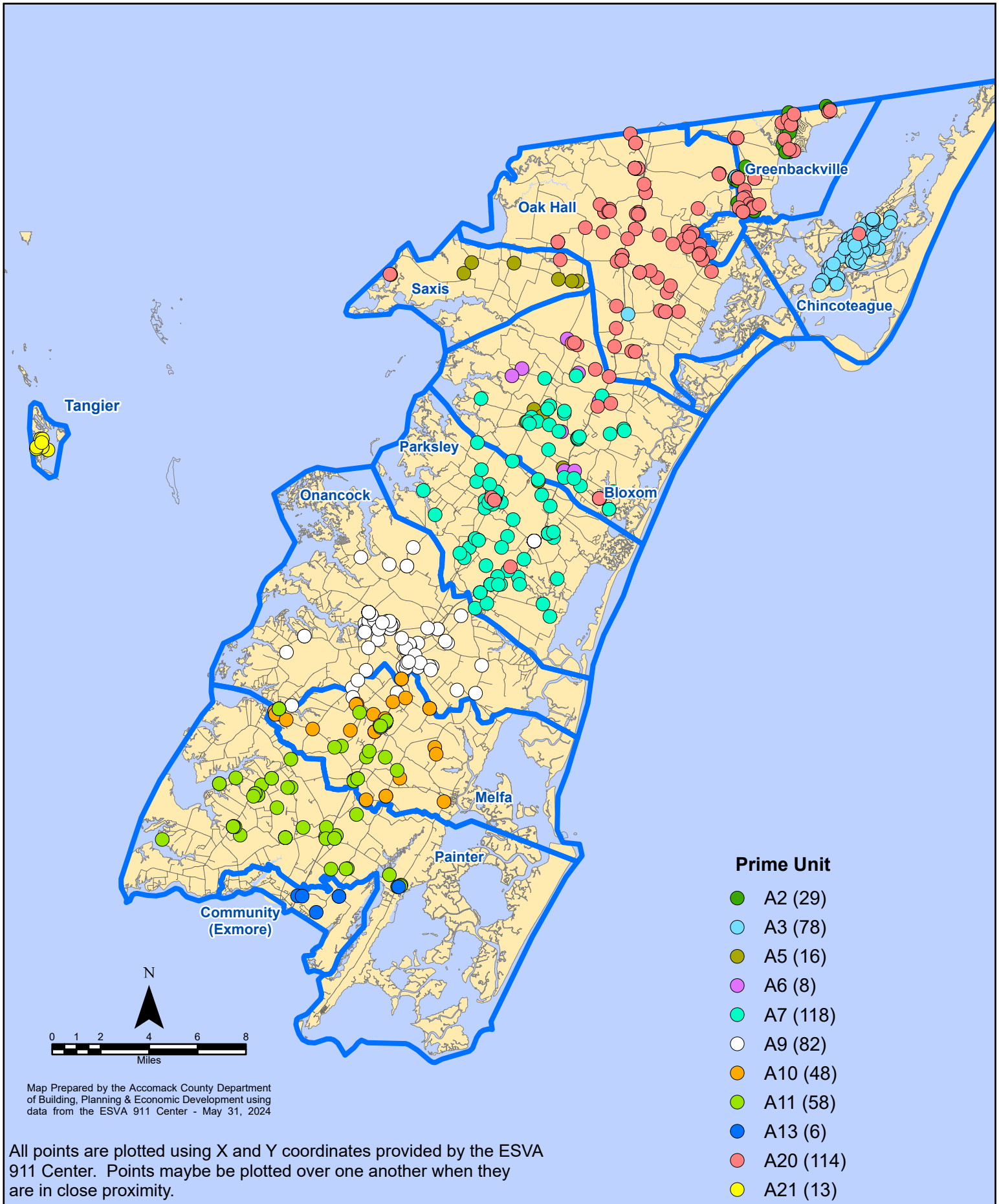
April 2024 EMS Calls By Response Time



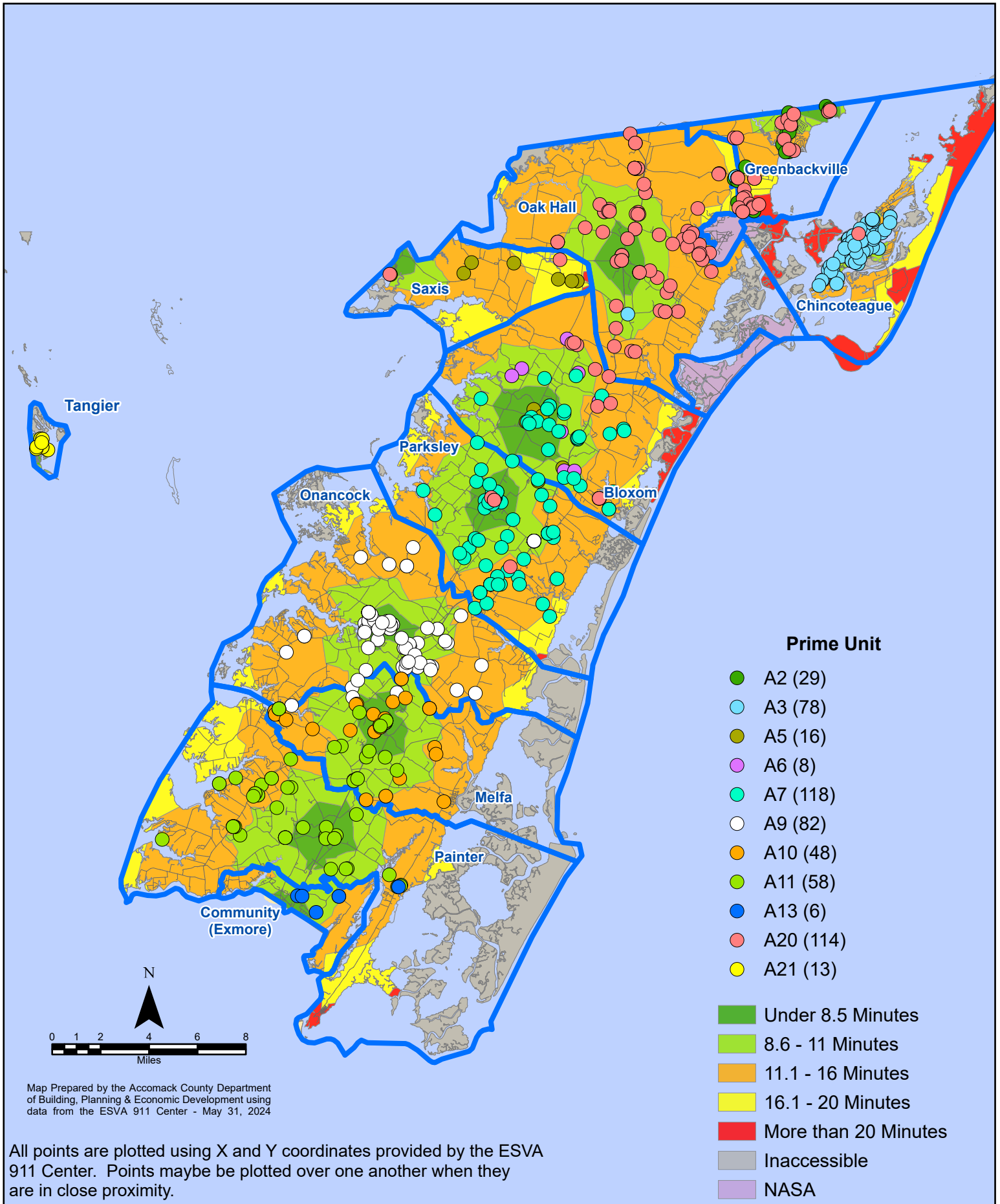
All points are plotted using X and Y coordinates provided by the ESVA 911 Center. Points may be plotted over one another when they are in close proximity.

Map Prepared by the Accomack County Department of Building, Planning & Economic Development using data from the ESVA 911 Center - May 31, 2024

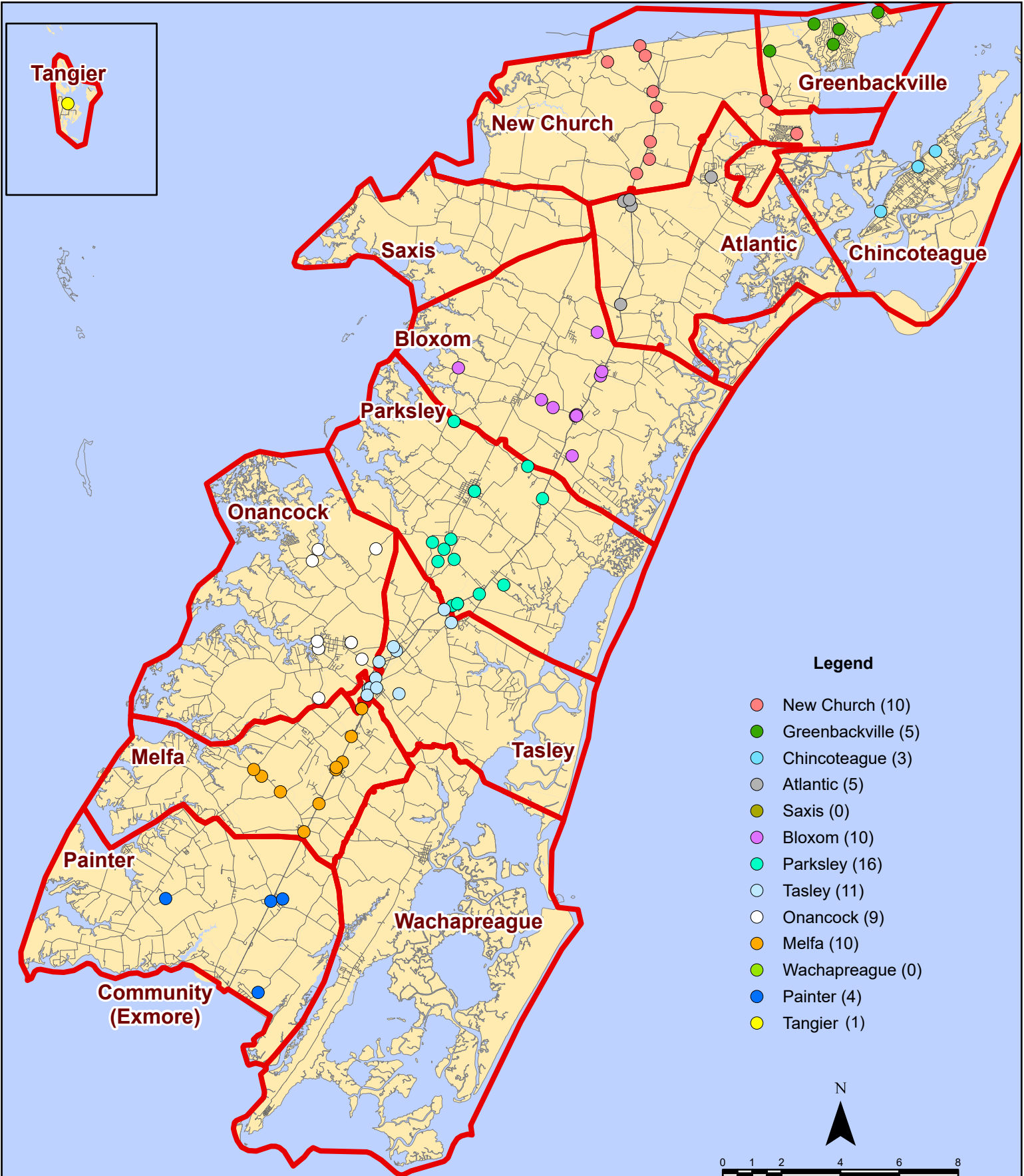
April 2024 EMS Calls By Prime Unit



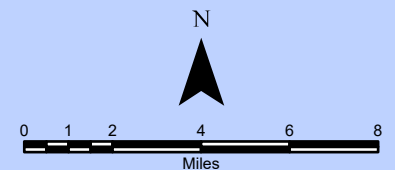
April 2024 EMS Calls By Prime Unit



April 2024 Fire Calls By District

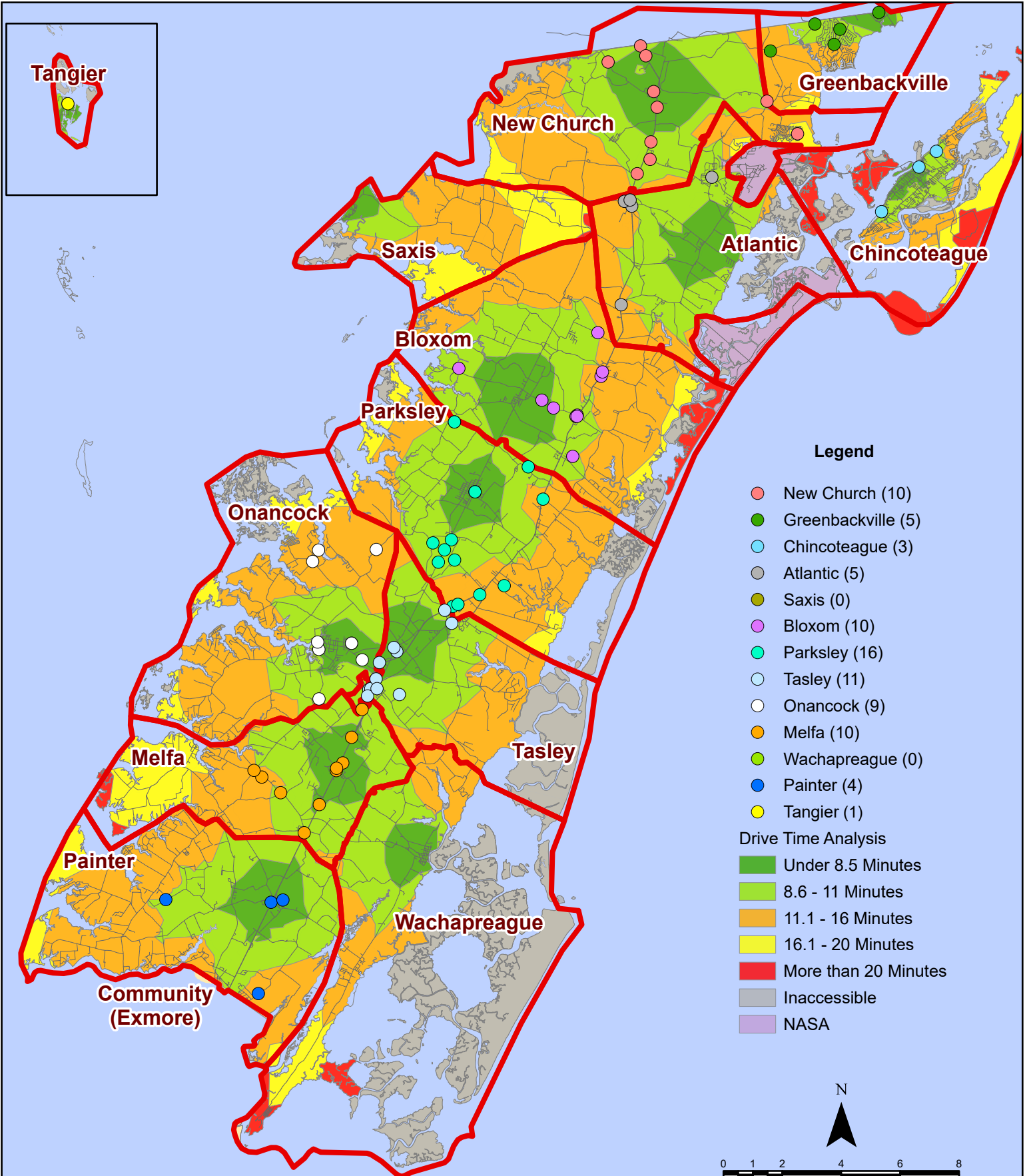


All points are plotted using X and Y coordinates provided by the ESVA 911 Center. Points may be plotted over one another when they are in close proximity.

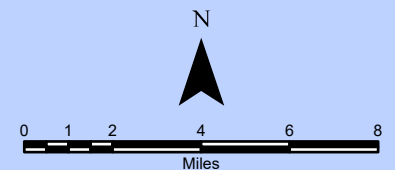


Map Prepared by the Accomack County Department of Building, Planning & Economic Development using data from the ESVA 911 Center - May 31, 2024

April 2024 Fire Calls By District

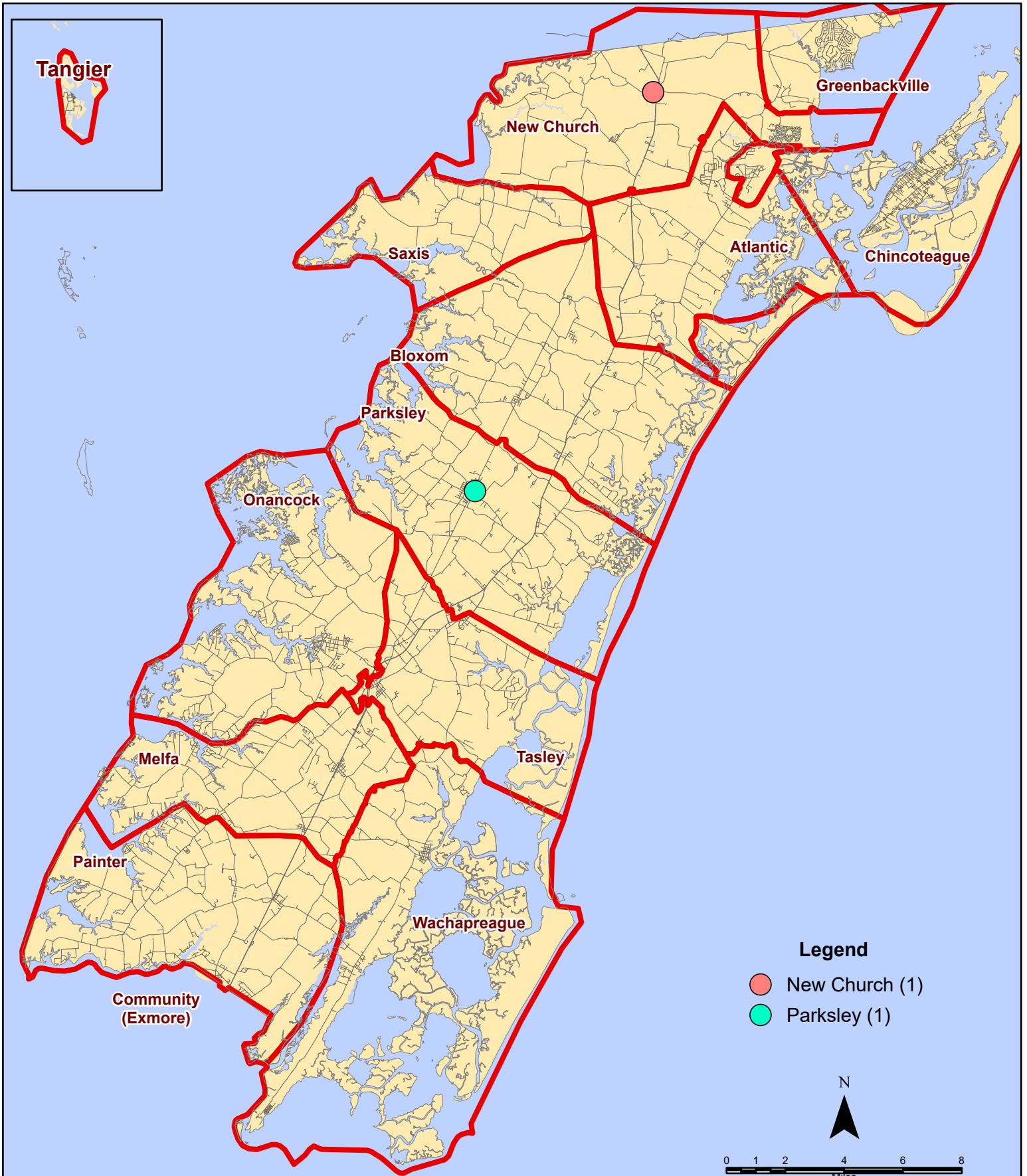


All points are plotted using X and Y coordinates provided by the ESVA 911 Center. Points may be plotted over one another when they are in close proximity.



Map Prepared by the Accomack County Department of Building, Planning & Economic Development using data from the ESVA 911 Center - May 31, 2024

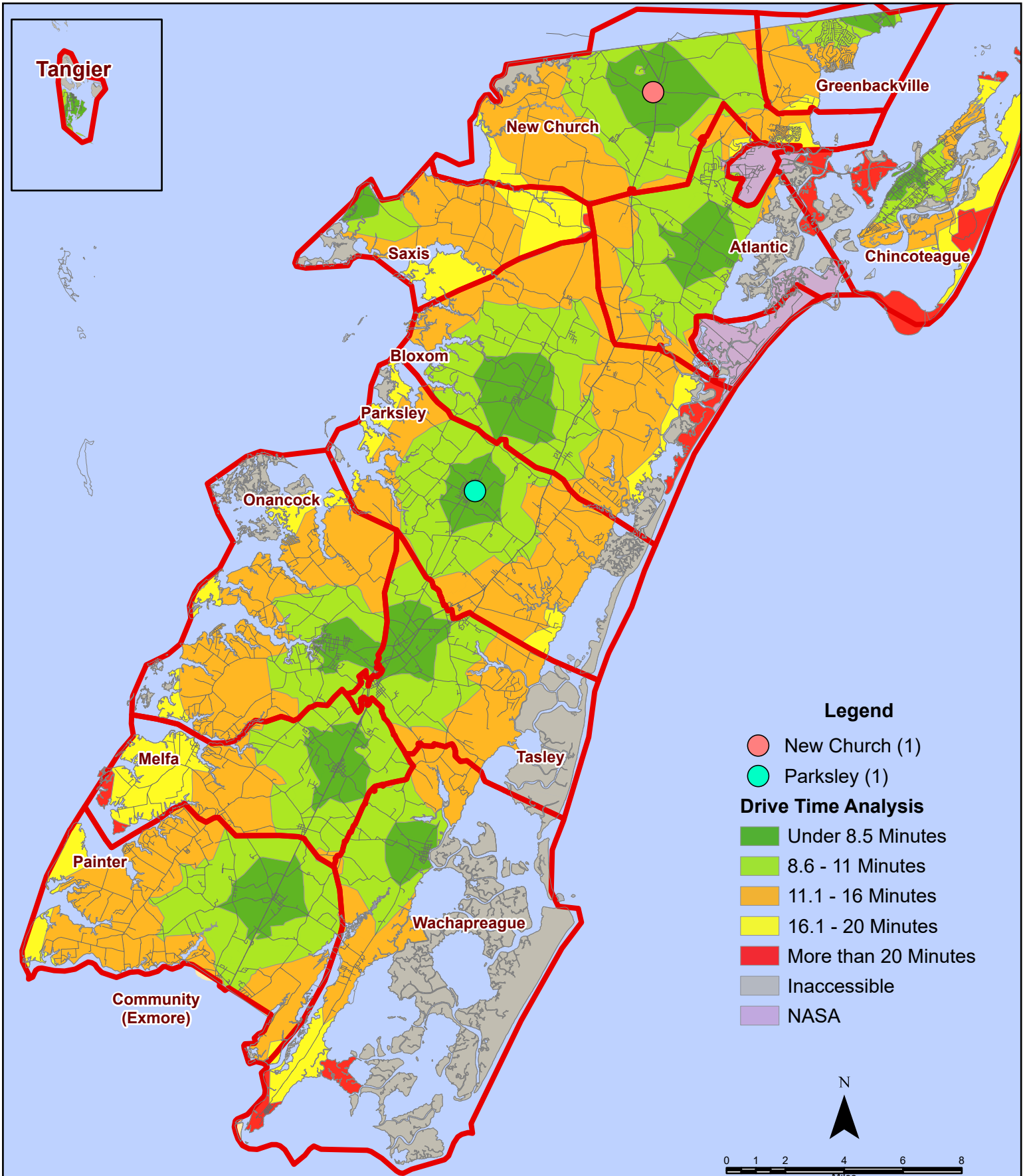
April 2024 Fire Calls With Response Time Greater Than 20 Mins.



All points are plotted using X and Y coordinates provided by the ESVA 911 Center.
Points may be plotted over one another when they are in close proximity.

Map Prepared by the Accomack County Department of Building, Planning & Economic Development using data from the ESVA 911 Center - May 31, 2024

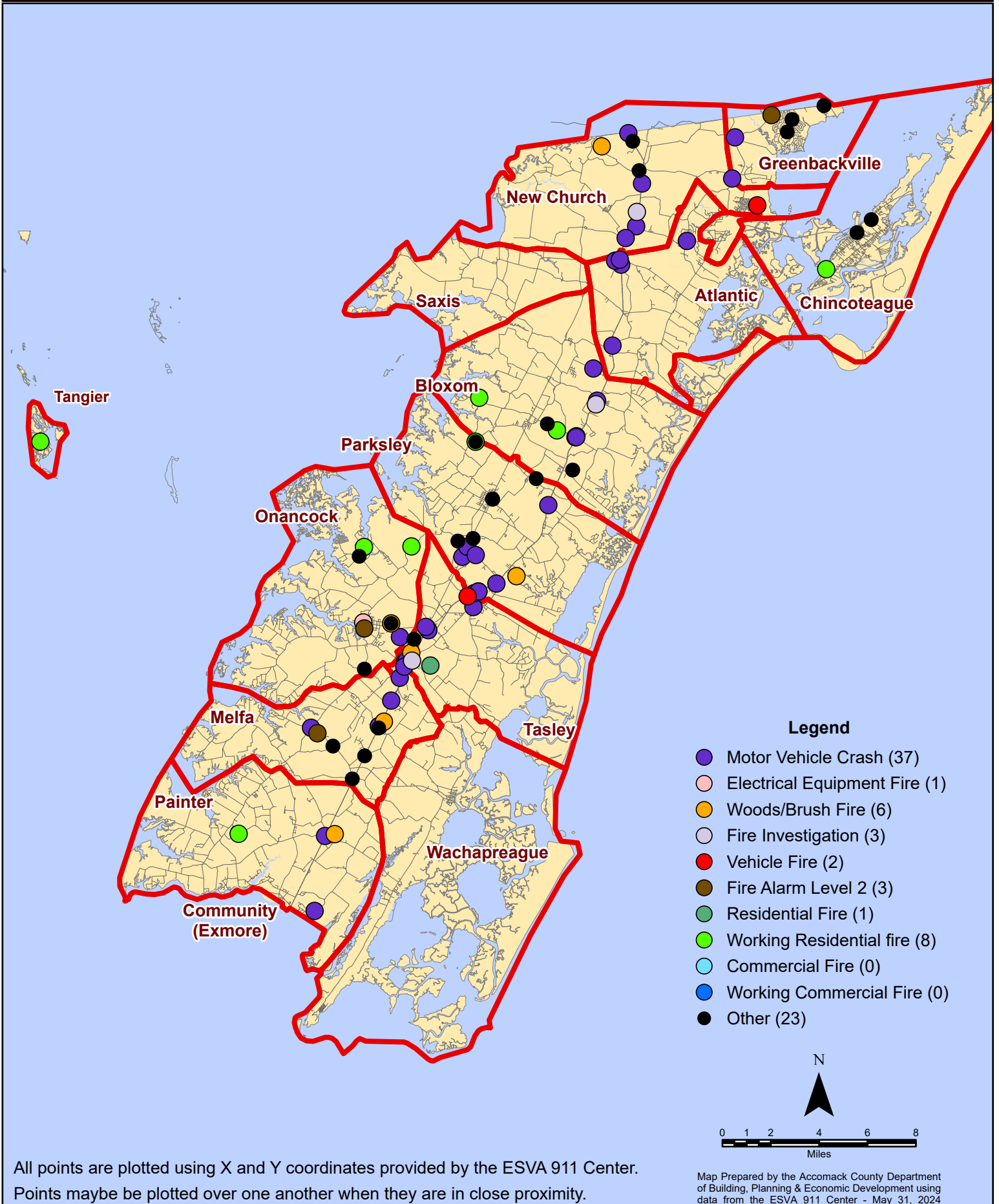
April 2024 Fire Calls With Response Time Greater Than 20 Mins.



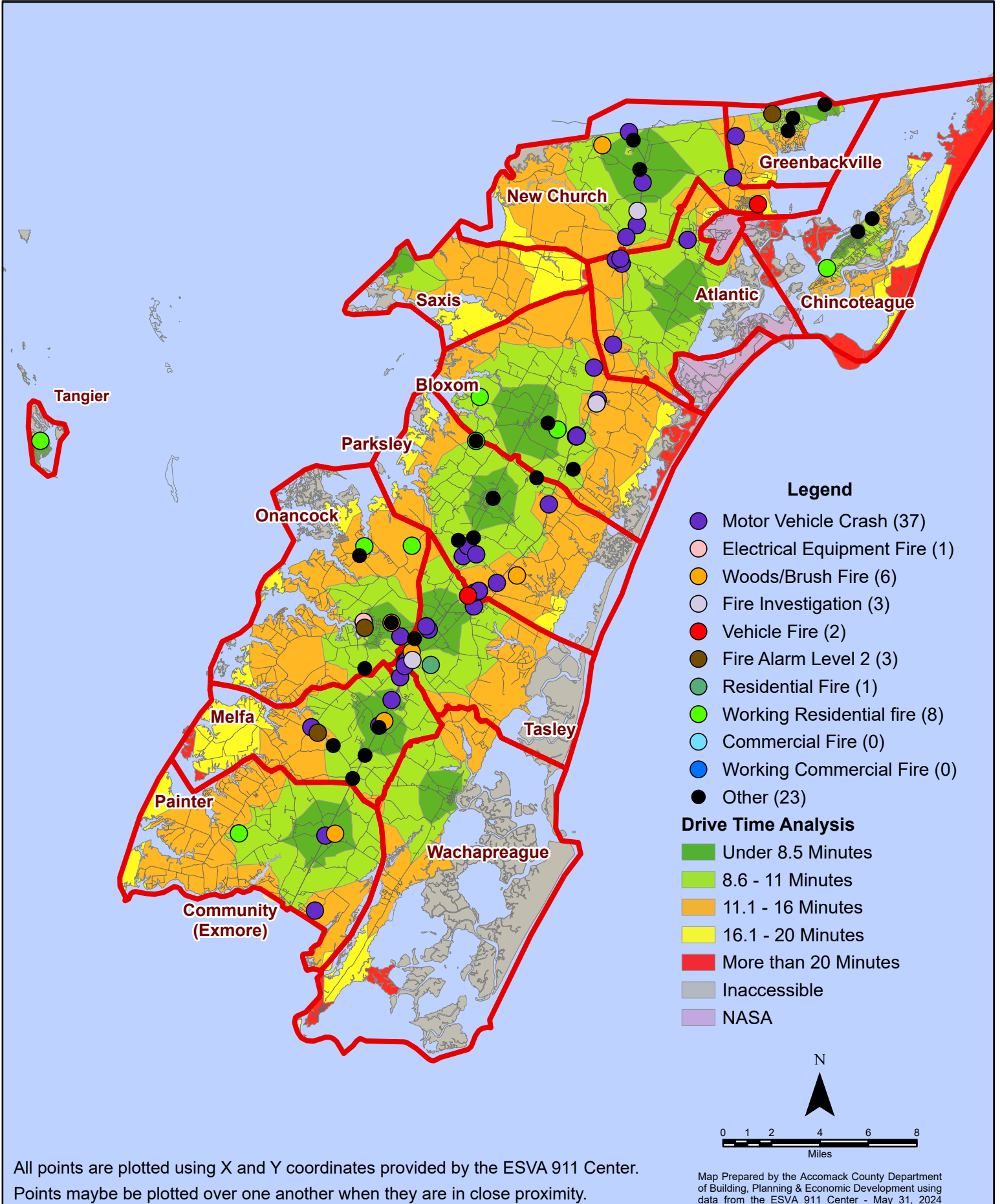
All points are plotted using X and Y coordinates provided by the ESVA 911 Center. Points may be plotted over one another when they are in close proximity.

Map Prepared by the Accomack County Department of Building, Planning & Economic Development using data from the ESVA 911 Center - May 31, 2024

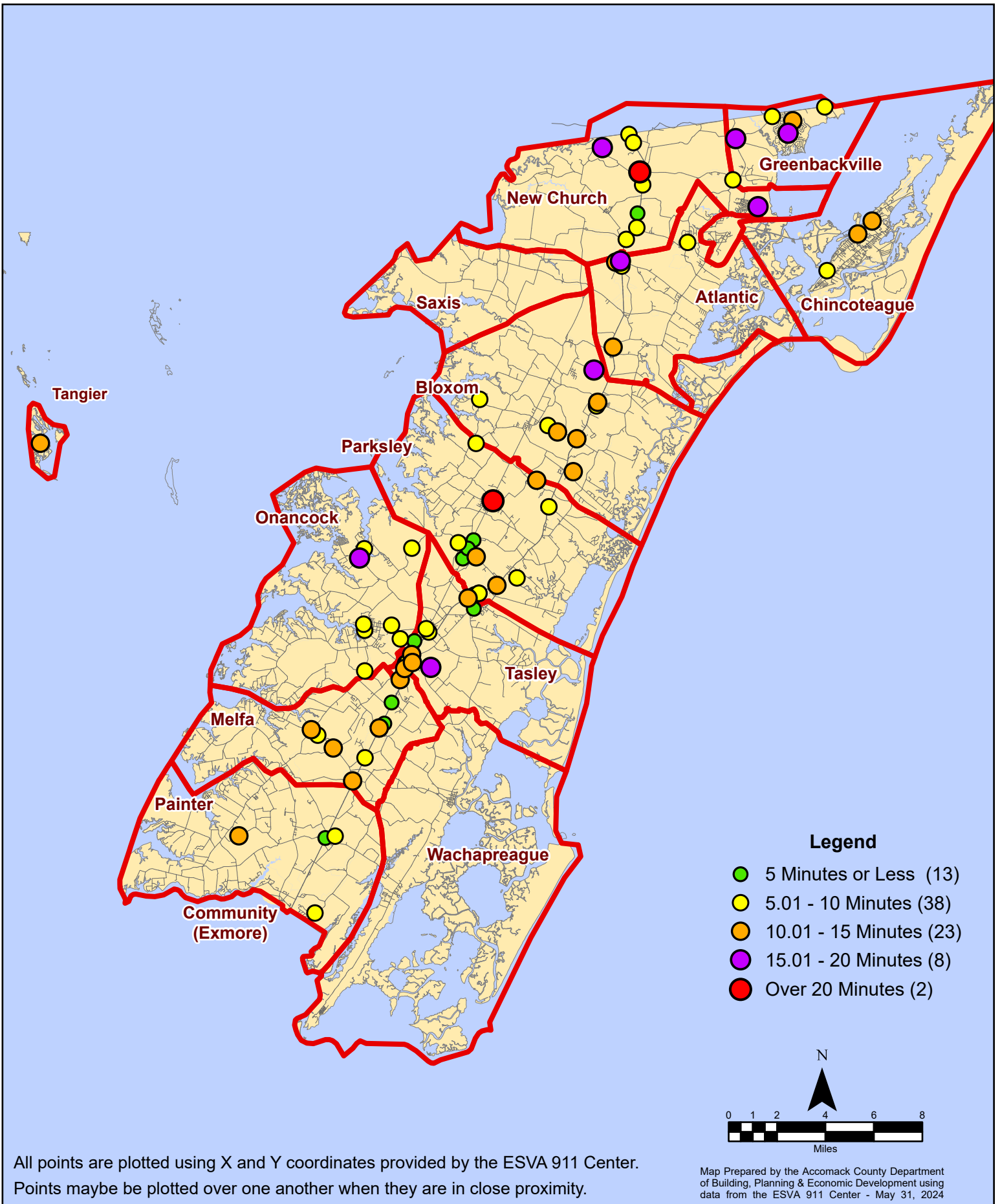
April 2024 Fire Calls By Type



April 2024 Fire Calls By Type



April 2024 Fire Calls By Response Time



April 2024 Fire Calls By Response Time

