

# November 2023

Fire - Performance Measure Data *					
Response District	Total Calls In District	Greater than 20 min. Response Time	Longest Response Time	Calls Handled by other agency	Overall Station Benchmark %
New Church	10	0	0:15:57	0	100.0%
Greenbackville					#DIV/0!
Chincoteague	6	0	0:11:34	0	100.0%
Atlantic	9	0	0:12:42	0	100.0%
Saxis	1	0	0:13:50	0	100.0%
Bloxom	15	1	0:22:39	3	93.3%
Parksley	10	0	0:12:07	0	100.0%
Tasley	8	0	0:14:33	0	100.0%
Onancock	8	0	0:13:47	0	100.0%
Melfa	9	0	0:15:28	6	100.0%
Wachapreague	3	0	0:10:54	0	100.0%
Painter	3	0	0:13:32	0	100.0%
Tangier					#DIV/0!
<b>System Totals</b>	<b>82</b>	<b>1</b>	<b>0:22:39</b>	<b>9</b>	<b>98.8%</b>

EMS - Performance Measure Data						
Response District	Total Calls in District	Greater than 20 min. Response Time	Longest Response Time	Calls Handled by other agency	Station Benchmark Compliance %	Overall Station Reliability %
Greenbackville	39	6	0:24:30	23	84.6%	41.0%
Chincoteague	69	2	0:24:48	5	97.1%	92.8%
Saxis	15	0	0:13:18	4	100.0%	73.3%
Bloxom	53	0	0:15:51	45	100.0%	15.1%
Parksley	94	1	0:26:19	1	98.9%	98.9%
Onancock	95	0	0:15:42	5	100.0%	94.7%
Melfa	57	0	0:19:55	18	100.0%	68.4%
Wachapreague (Painter)	44	1	0:24:27	2	97.7%	95.5%
Oak Hall	67	1	0:23:03	0	98.5%	100.0%
Tangier	14	0	0:11:49	0	100.0%	100.0%
Community (Exmore)	10	0	0:12:31	1	100.0%	90.0%
<b>System Totals</b>	<b>557</b>	<b>11</b>	<b>0:26:19</b>	<b>104</b>	<b>98.0%</b>	<b>81.3%</b>

EMS Mutual Aid Data															
	Station Giving Aid														
	Greenbackville	Chincoteague	Saxis	Bloxom	Parksley	Onancock	Melfa	Wachapreague/Painter	Oak Hall	Community (Exmore)	Northampton	Wallops	NORS	2nd Call	3rd Call
Greenbackville	1							22					21	2	
Chincoteague								4				1	1	4	
Saxis								4					4		
Bloxom				33				12					45		
Parksley					1										1
Onancock				2		2	1						4	1	
Melfa				2		16							15	3	
Wachapreague (Painter)					1				1				1	1	
Oak Hall															
Community (Exmore)									1				1		
Northampton Co.															
Wallops															
<b>Totals</b>	<b>0</b>	<b>1</b>	<b>0</b>	<b>0</b>	<b>35</b>	<b>4</b>	<b>2</b>	<b>17</b>	<b>42</b>	<b>2</b>	<b>0</b>	<b>1</b>	<b>88</b>	<b>14</b>	<b>2</b>

Transport Destination			
Hospital Destination by Unit	Riverside - Shore Memorial	PRMC / Total Health	Other
Chincoteague	17	17	1
Saxis	5	3	
Bloxom	2	1	
Parksley	85		
Onancock	66		
Melfa	24		
Wachapreague (Painter)	44		1
Oak Hall	51	30	3
Wallops	1		
<b>Totals</b>	<b>301</b>	<b>58</b>	<b>5</b>

**Benchmark** = The Accomack County Board of Supervisors established a 20 minute standard for emergency response.

**NORS** = No Response by station or the call was handled by another station or agency.

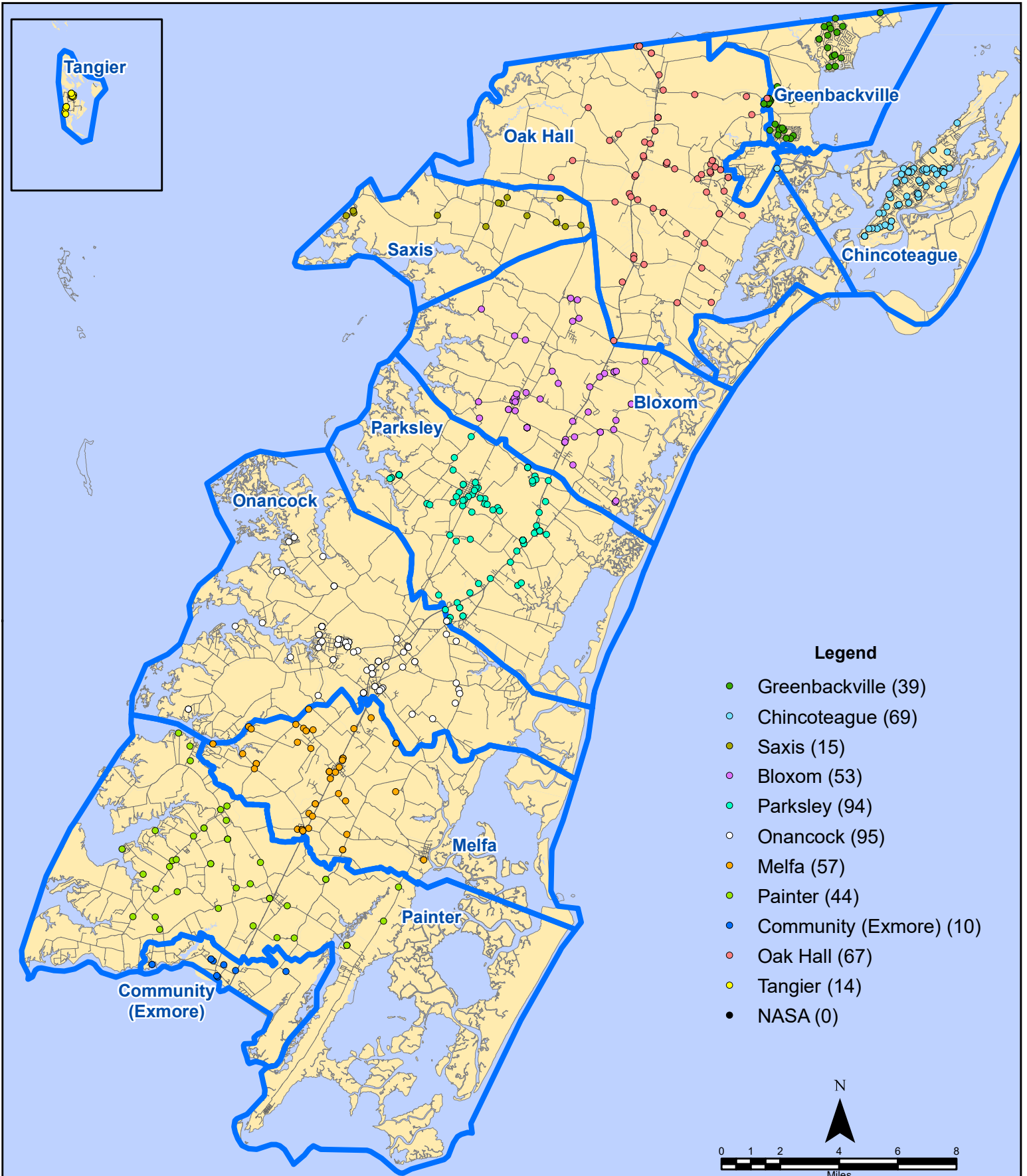
**2nd Call** = 2nd ambulance call received while first ambulance was on another call.

**3rd Call** = 3rd ambulance call received while first & second ambulances were on other calls.

\* This data excludes F1 Med (Medical Assist) calls in the Fire Data.

*This information was prepared using data supplied by the Eastern Shore of Virginia 911 Center. This information is original incident data only and may not be representative of all units and/or stations who responded to an incident.*

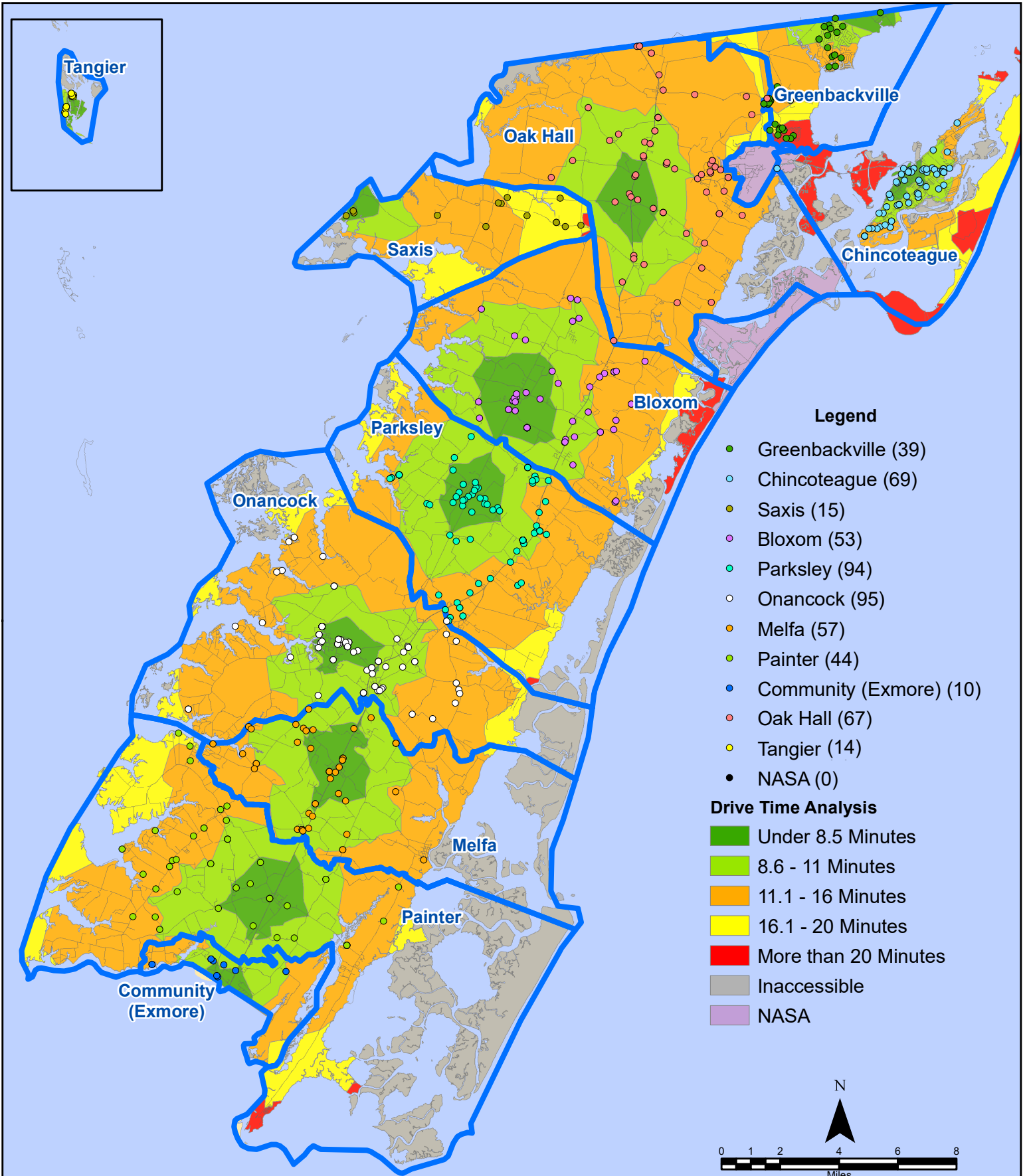
# November 2023 EMS Calls By District



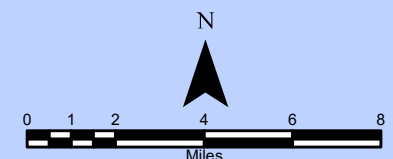
All points are plotted using X and Y coordinates provided by the ESVA 911 Center.  
Points may be plotted over one another when they are in close proximity.

Map Prepared by the Accomack County Department of Building, Planning & Economic Development using data from the ESVA 911 Center - December 18, 2023

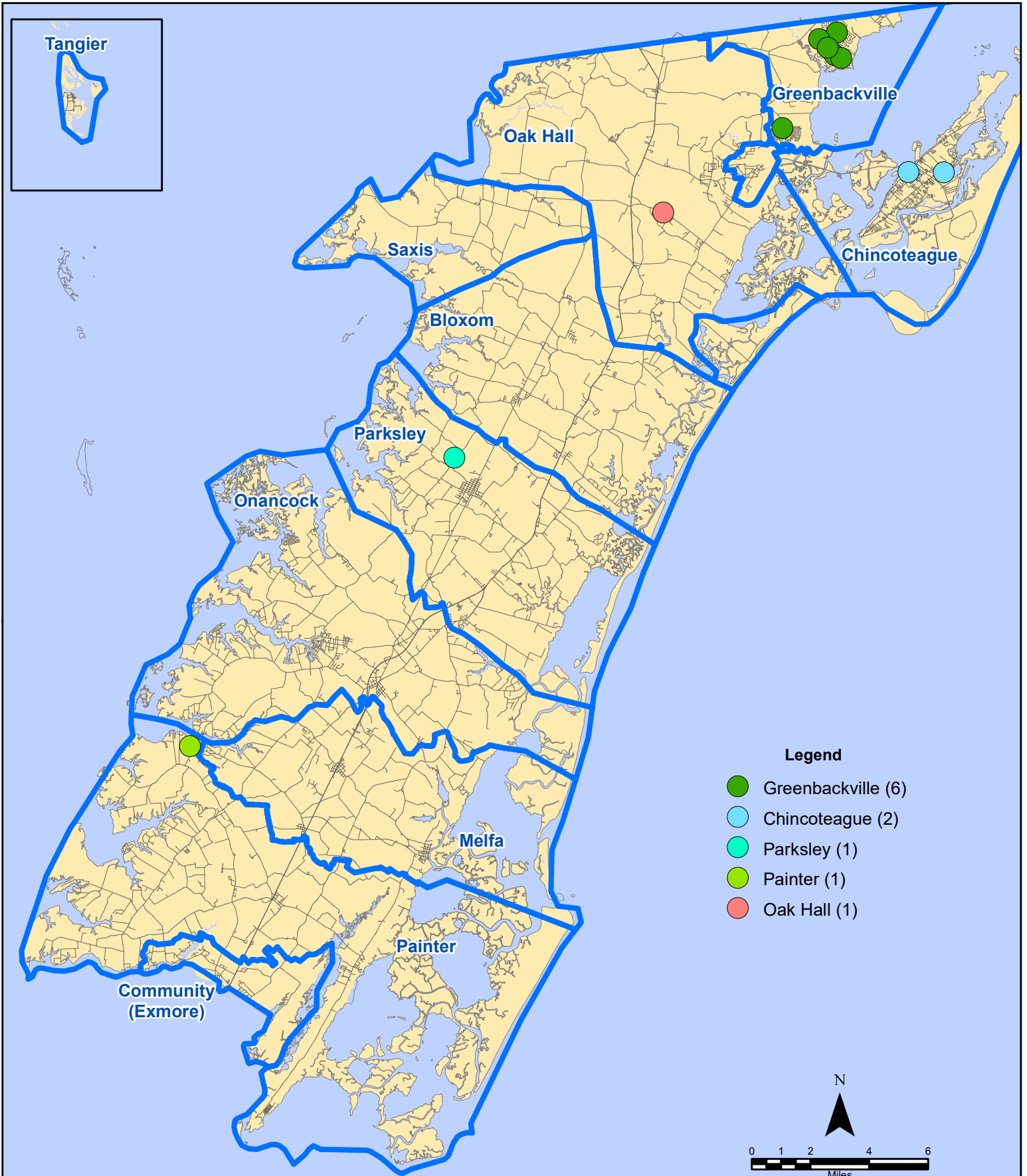
# November 2023 EMS Calls By District



All points are plotted using X and Y coordinates provided by the ESVA 911 Center. Points may be plotted over one another when they are in close proximity.



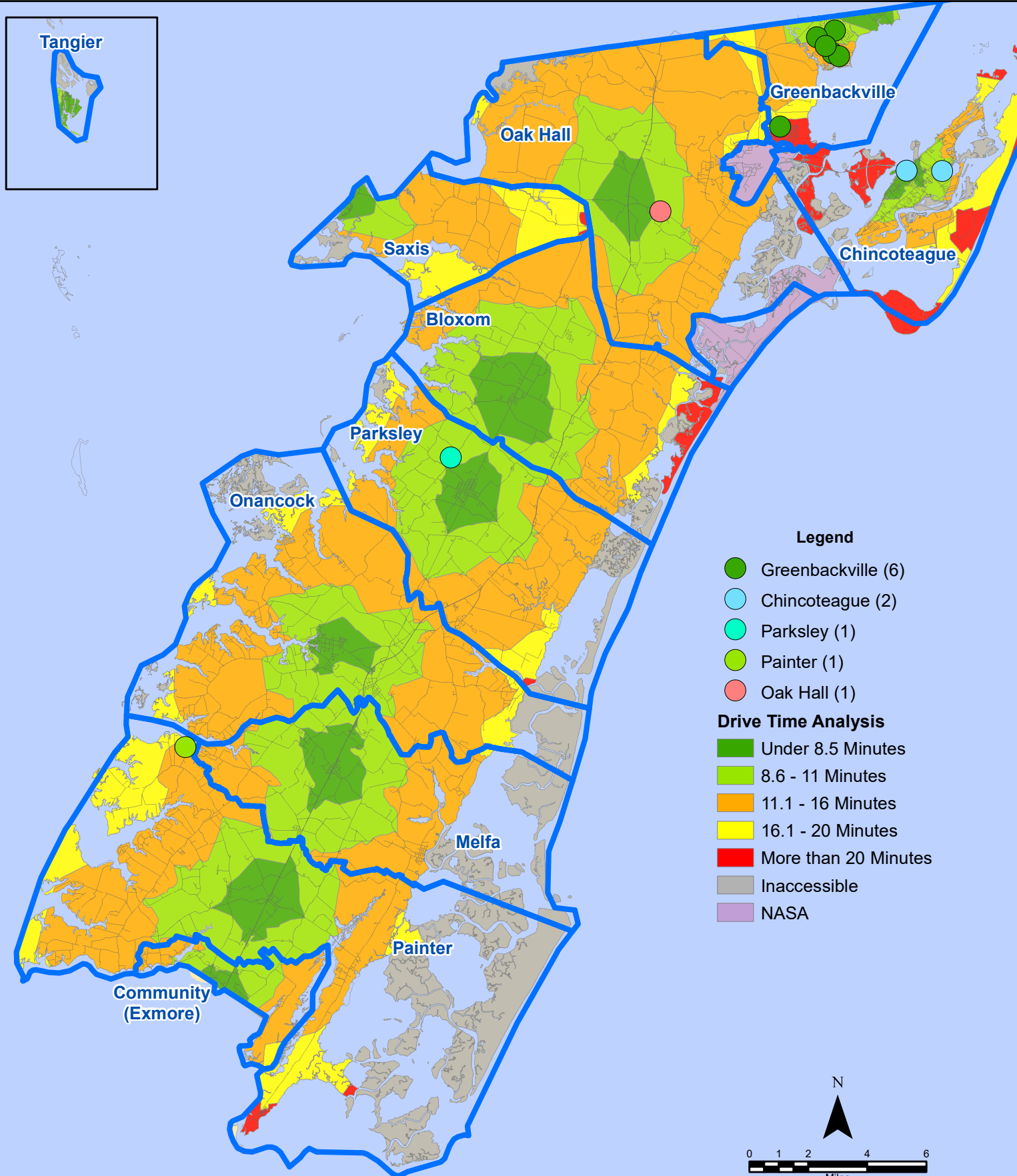
# November 2023 EMS Calls With Response Time Greater Than 20 Mins.



All points are plotted using X and Y coordinates provided by the ESVA 911 Center. Points may be plotted over one another when they are in close proximity.

Map Prepared by the Accomack County Department of Building, Planning & Economic Development using data from the ESVA 911 Center - December 18, 2023

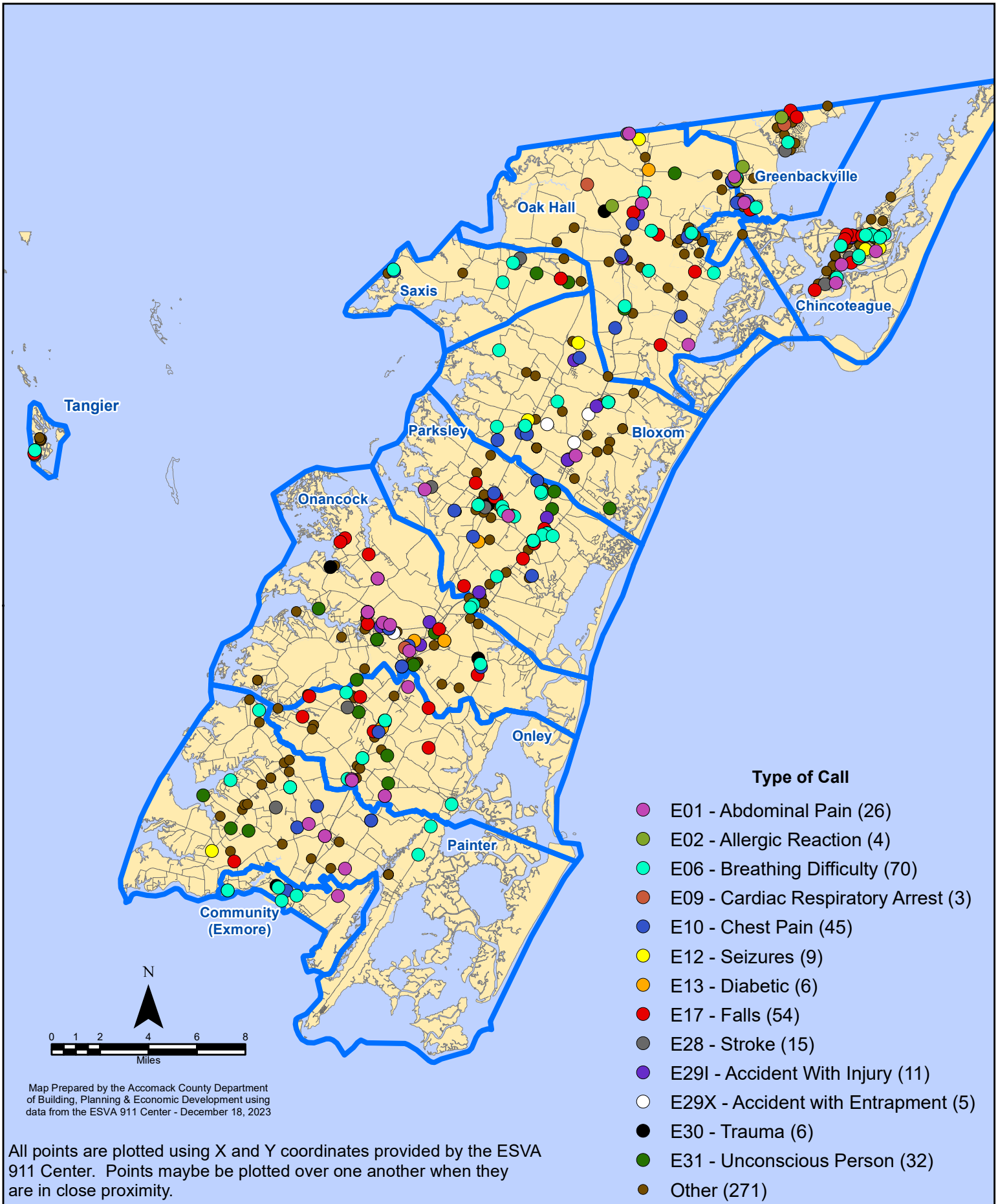
# November 2023 EMS Calls With Response Time Greater Than 20 Mins.



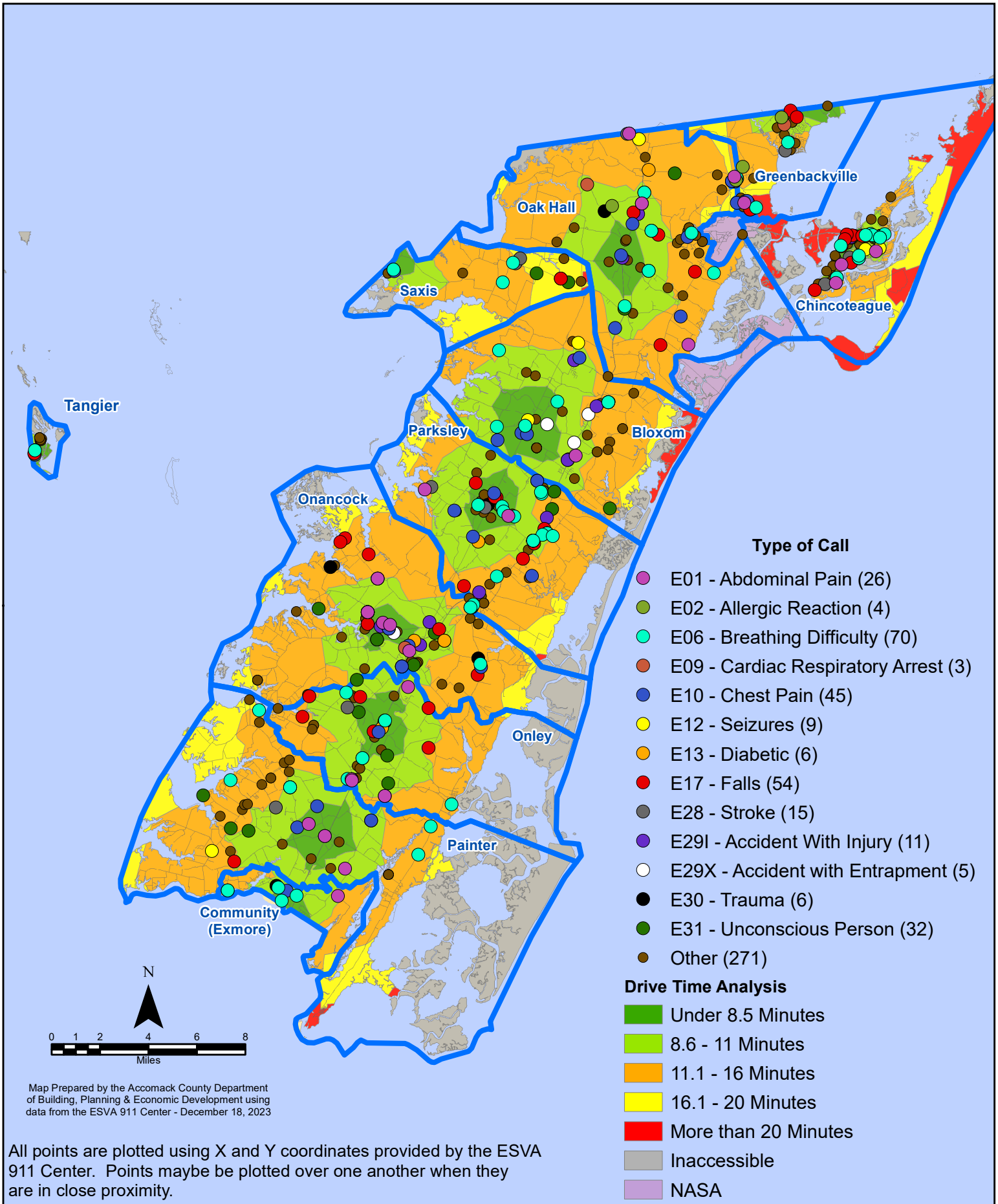
All points are plotted using X and Y coordinates provided by the ESVA 911 Center. Points may be plotted over one another when they are in close proximity.

Map Prepared by the Accomack County Department of Building, Planning & Economic Development using data from the ESVA 911 Center - December 18, 2023

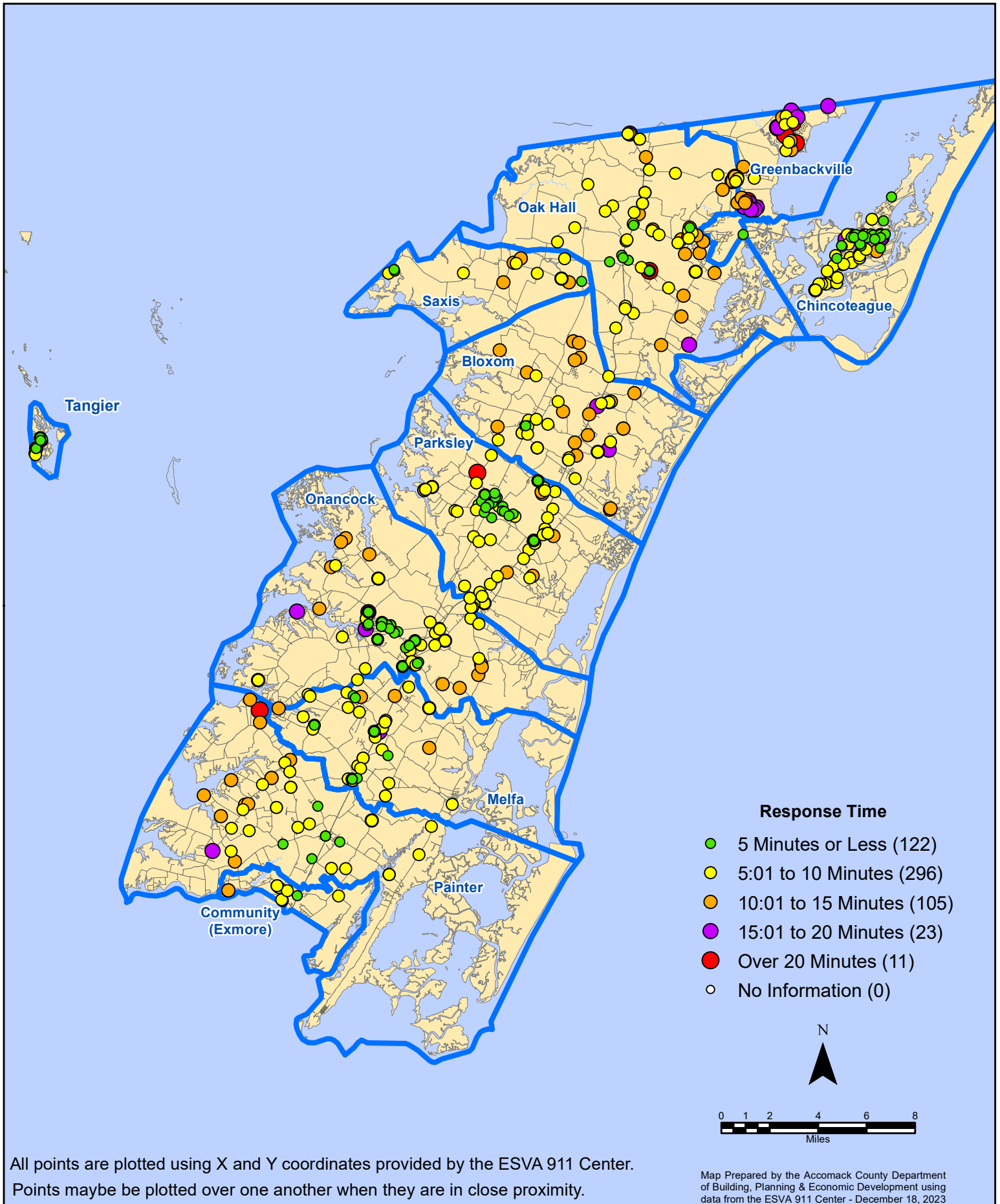
# November 2023 EMS Calls By Type



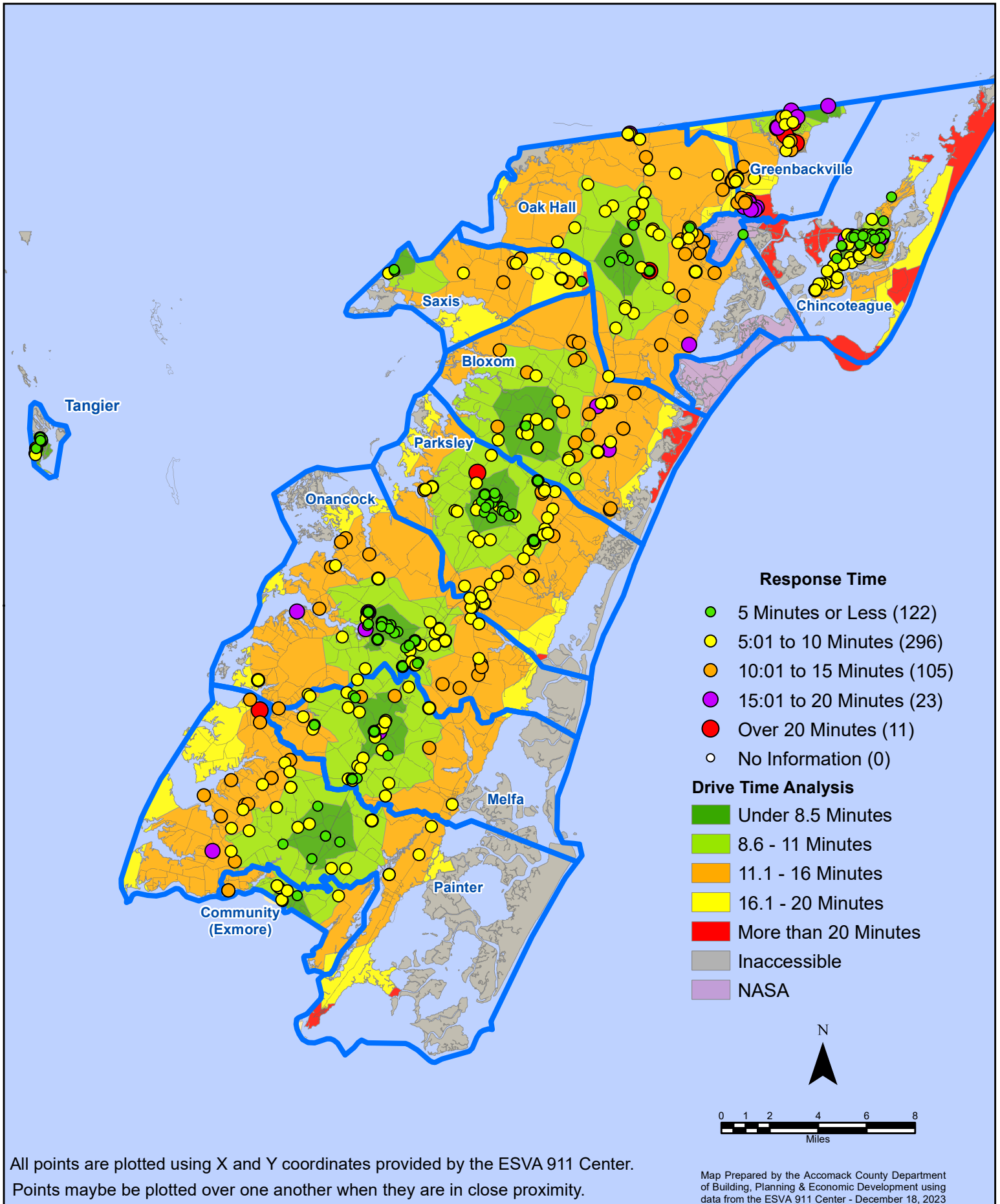
# November 2023 EMS Calls By Type



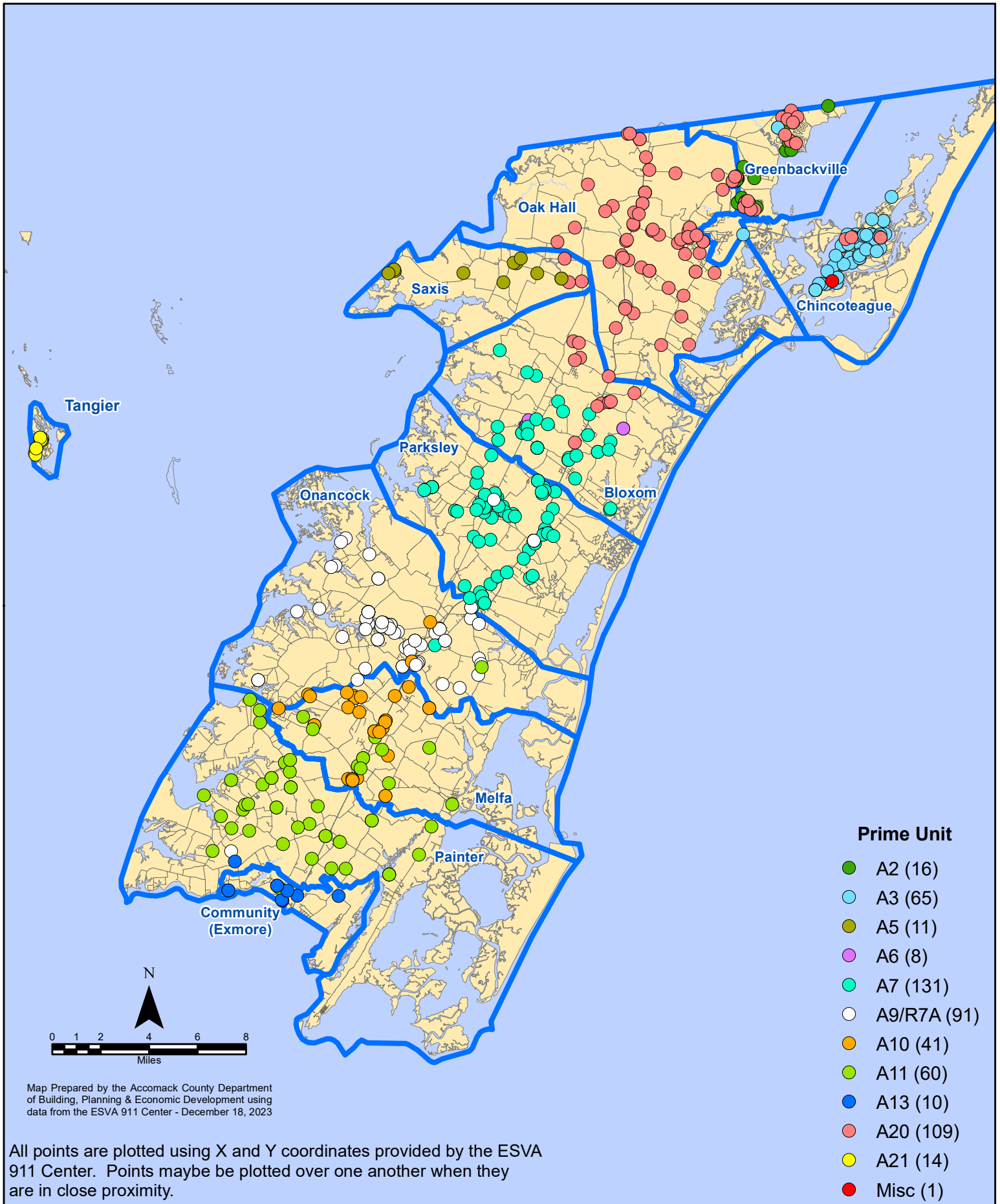
# November 2023 EMS Calls By Response Time



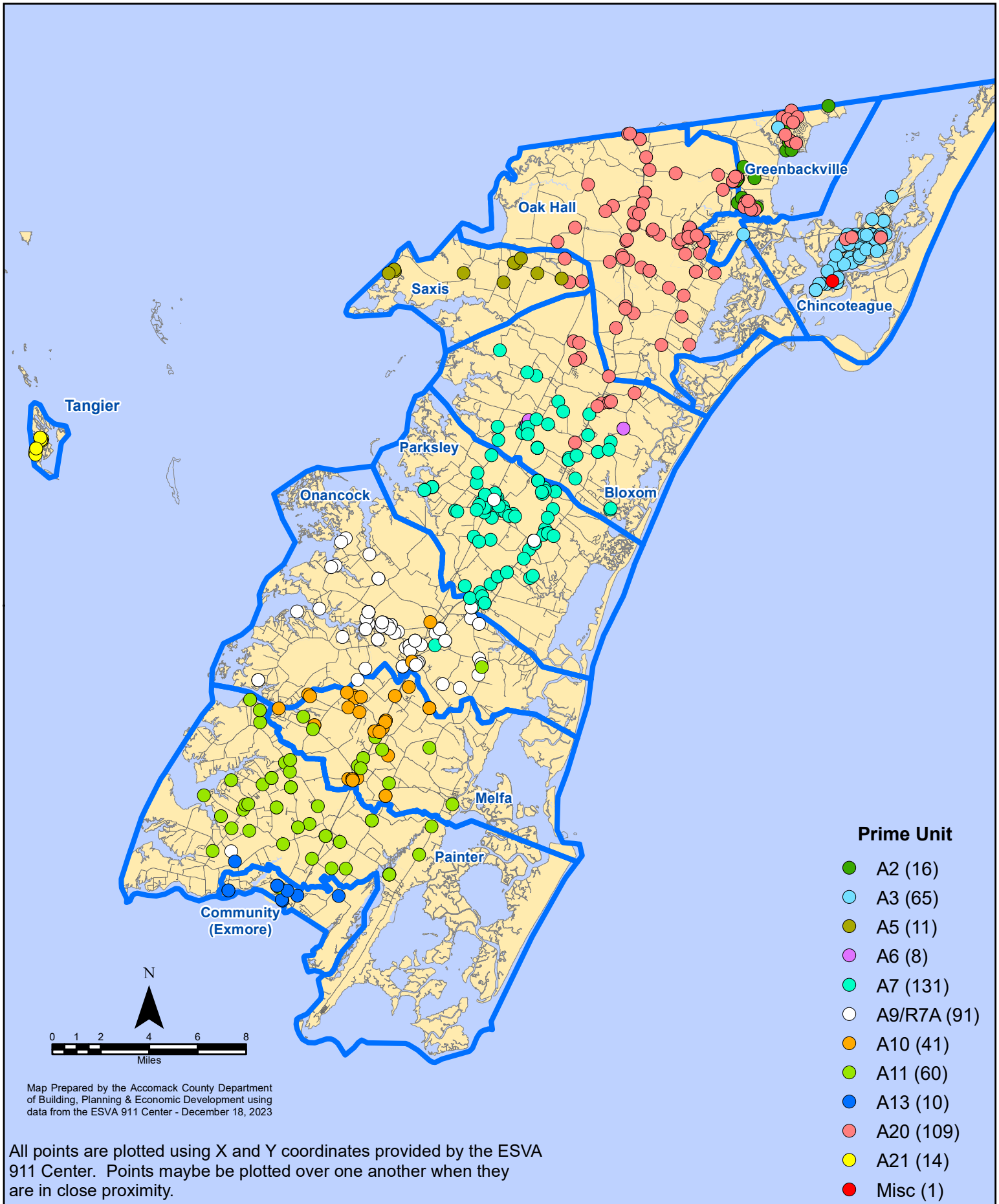
# November 2023 EMS Calls By Response Time



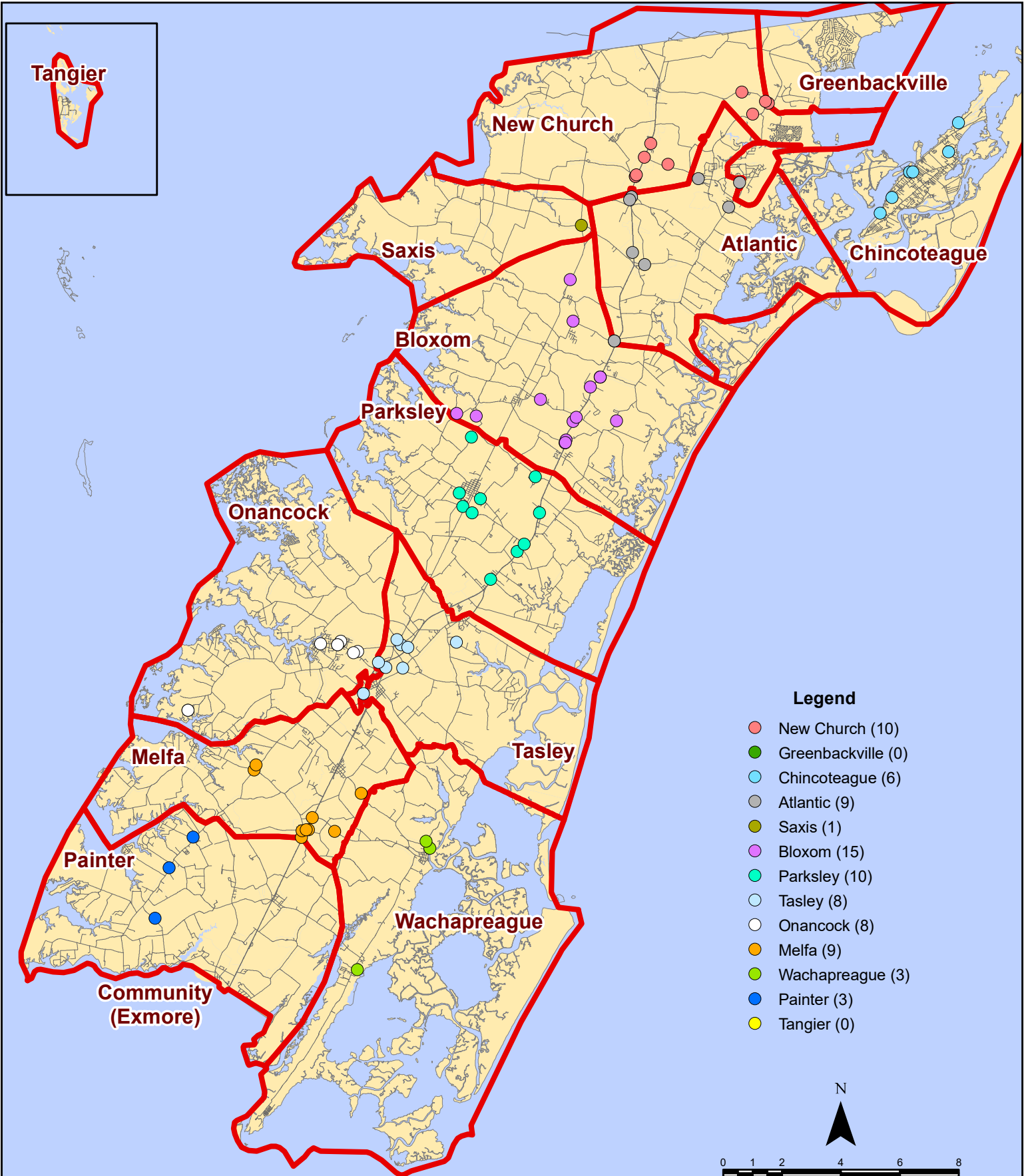
# November 2023 EMS Calls By Prime Unit



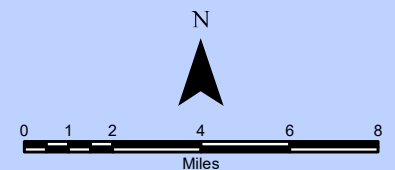
# November 2023 EMS Calls By Prime Unit



# November 2023 Fire Calls By District

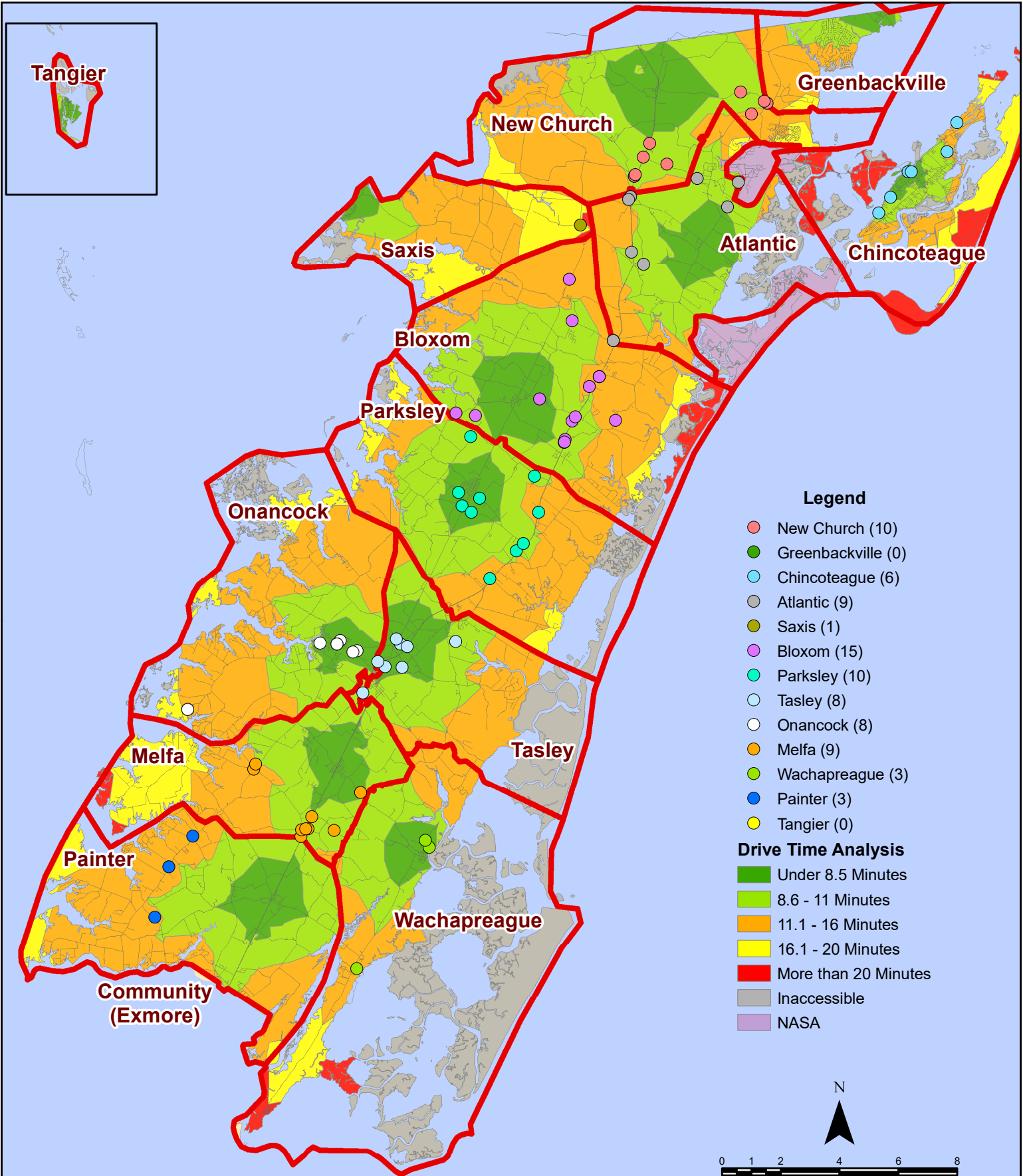


All points are plotted using X and Y coordinates provided by the ESVA 911 Center. Points may be plotted over one another when they are in close proximity.

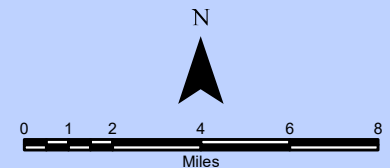


Map Prepared by the Accomack County Department of Building, Planning & Economic Development using data from the ESVA 911 Center - December 18, 2023

# November 2023 Fire Calls By District

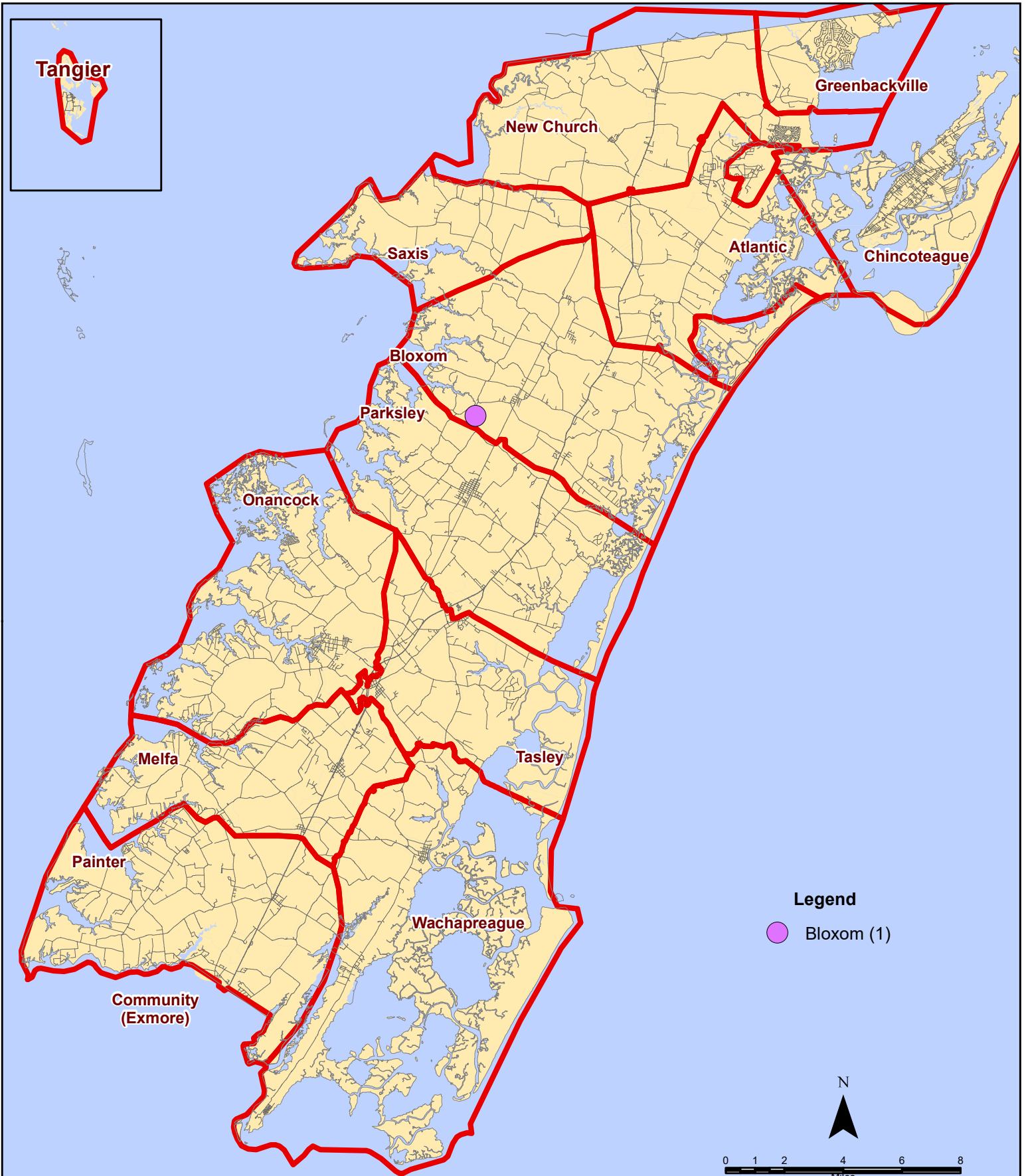


All points are plotted using X and Y coordinates provided by the ESVA 911 Center. Points may be plotted over one another when they are in close proximity.



Map Prepared by the Accomack County Department of Building, Planning & Economic Development using data from the ESVA 911 Center - December 18, 2023

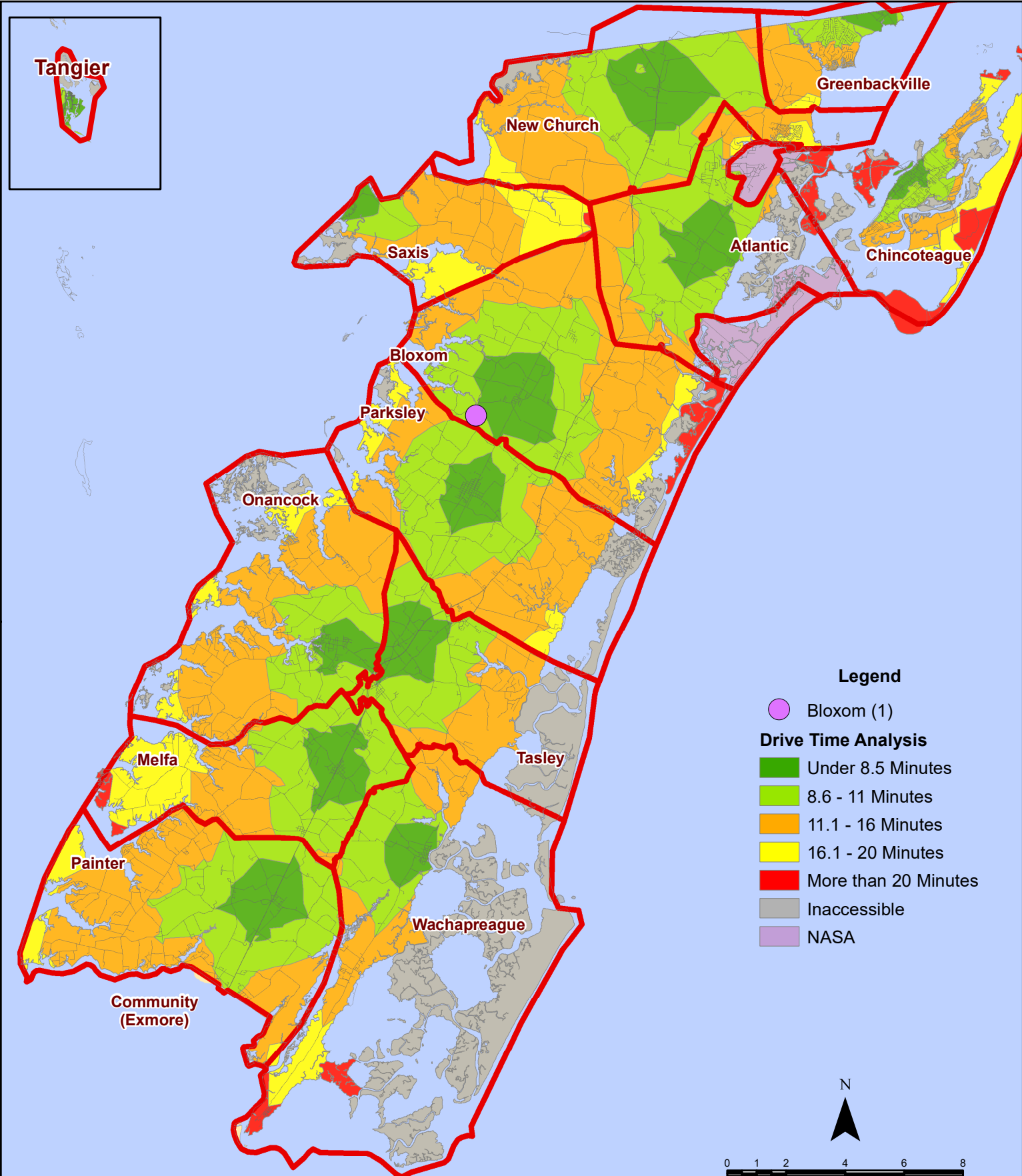
# November 2023 Fire Calls With Response Time Greater Than 20 Mins.



All points are plotted using X and Y coordinates provided by the ESVA 911 Center.  
Points may be plotted over one another when they are in close proximity.

Map Prepared by the Accomack County Department of Building, Planning & Economic Development using data from the ESVA 911 Center - December 18, 2023

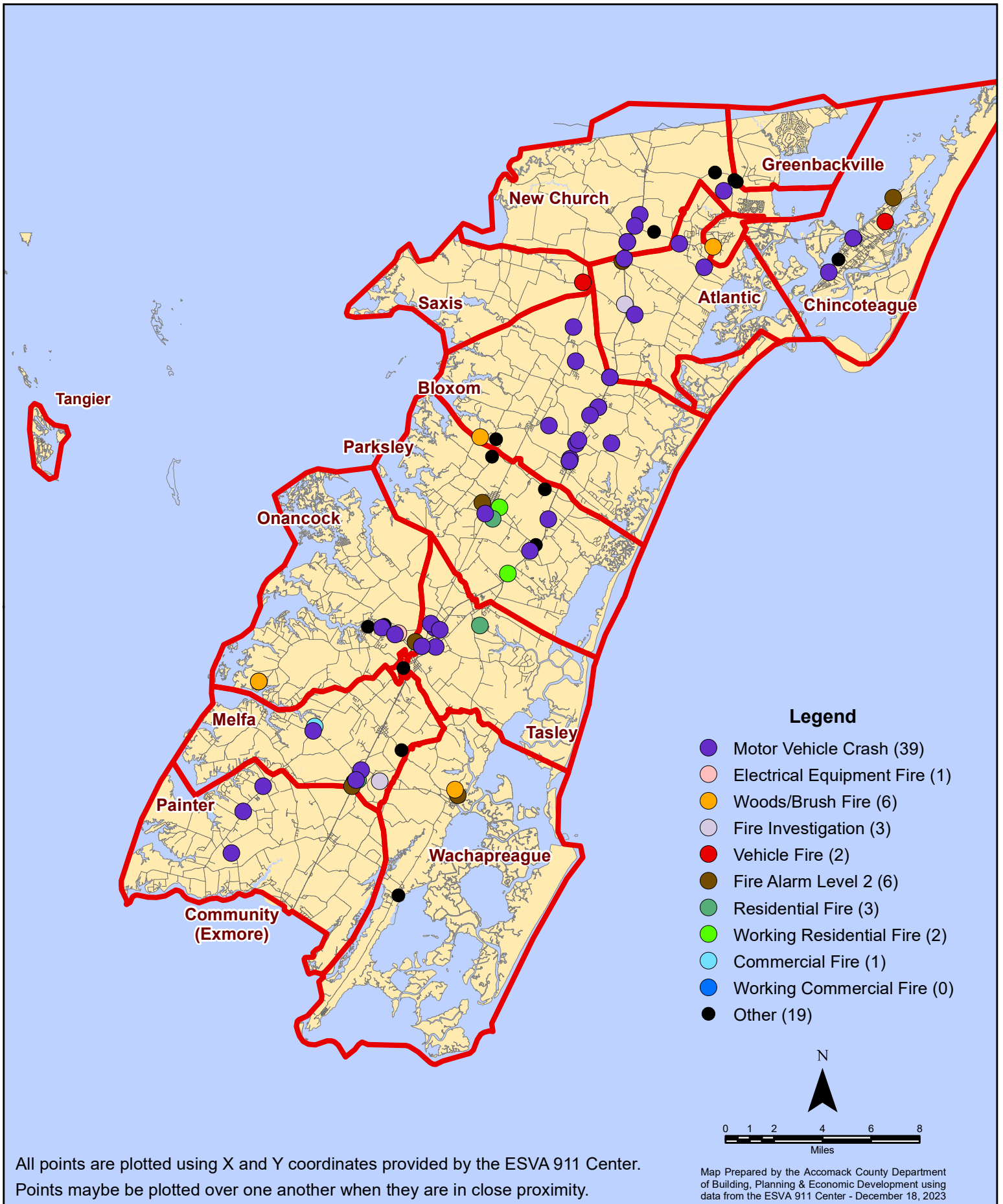
# November 2023 Fire Calls With Response Time Greater Than 20 Mins.



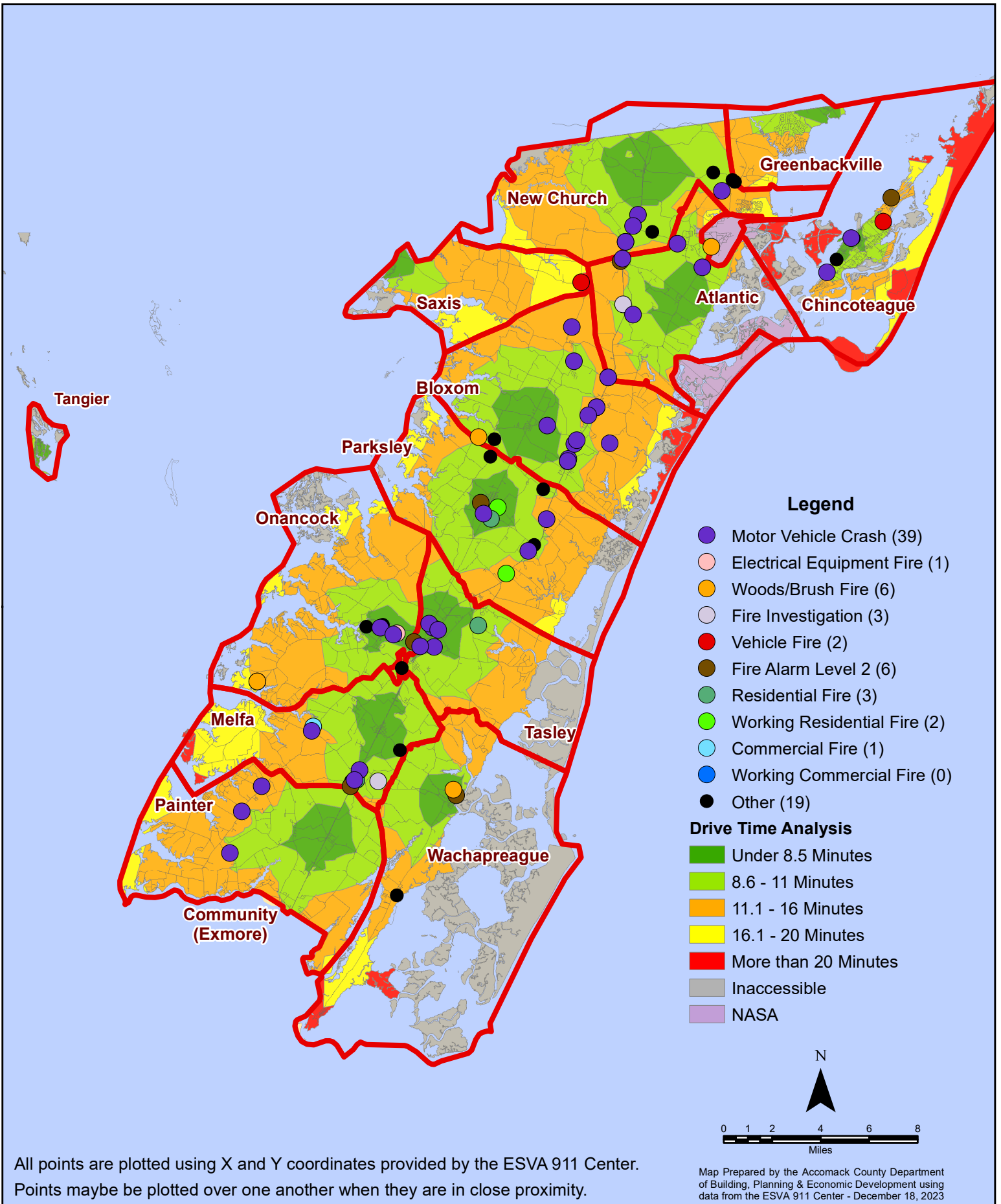
All points are plotted using X and Y coordinates provided by the ESVA 911 Center. Points may be plotted over one another when they are in close proximity.

Map Prepared by the Accomack County Department of Building, Planning & Economic Development using data from the ESVA 911 Center - December 18, 2023

# November 2023 Fire Calls By Type



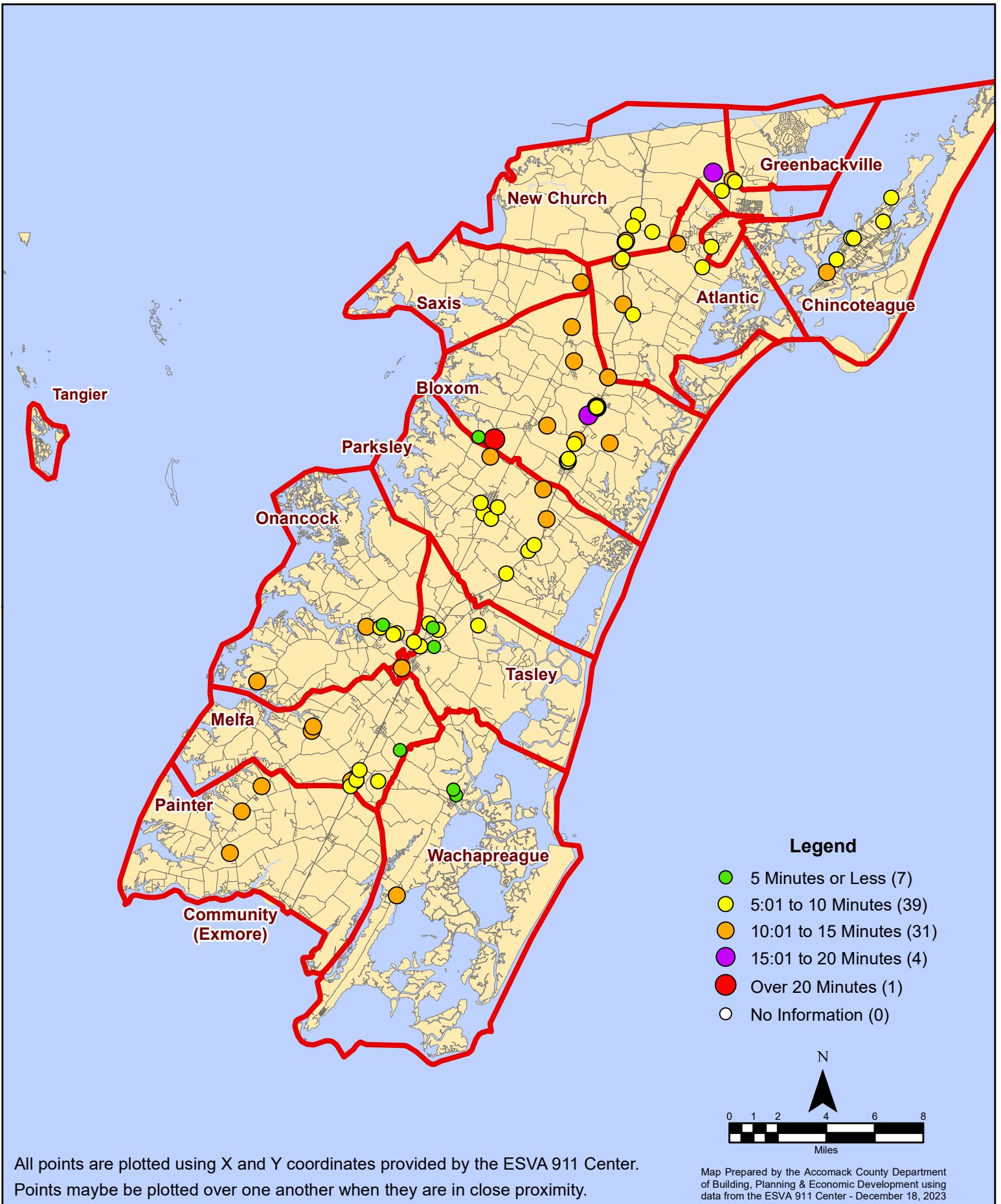
# November 2023 Fire Calls By Type



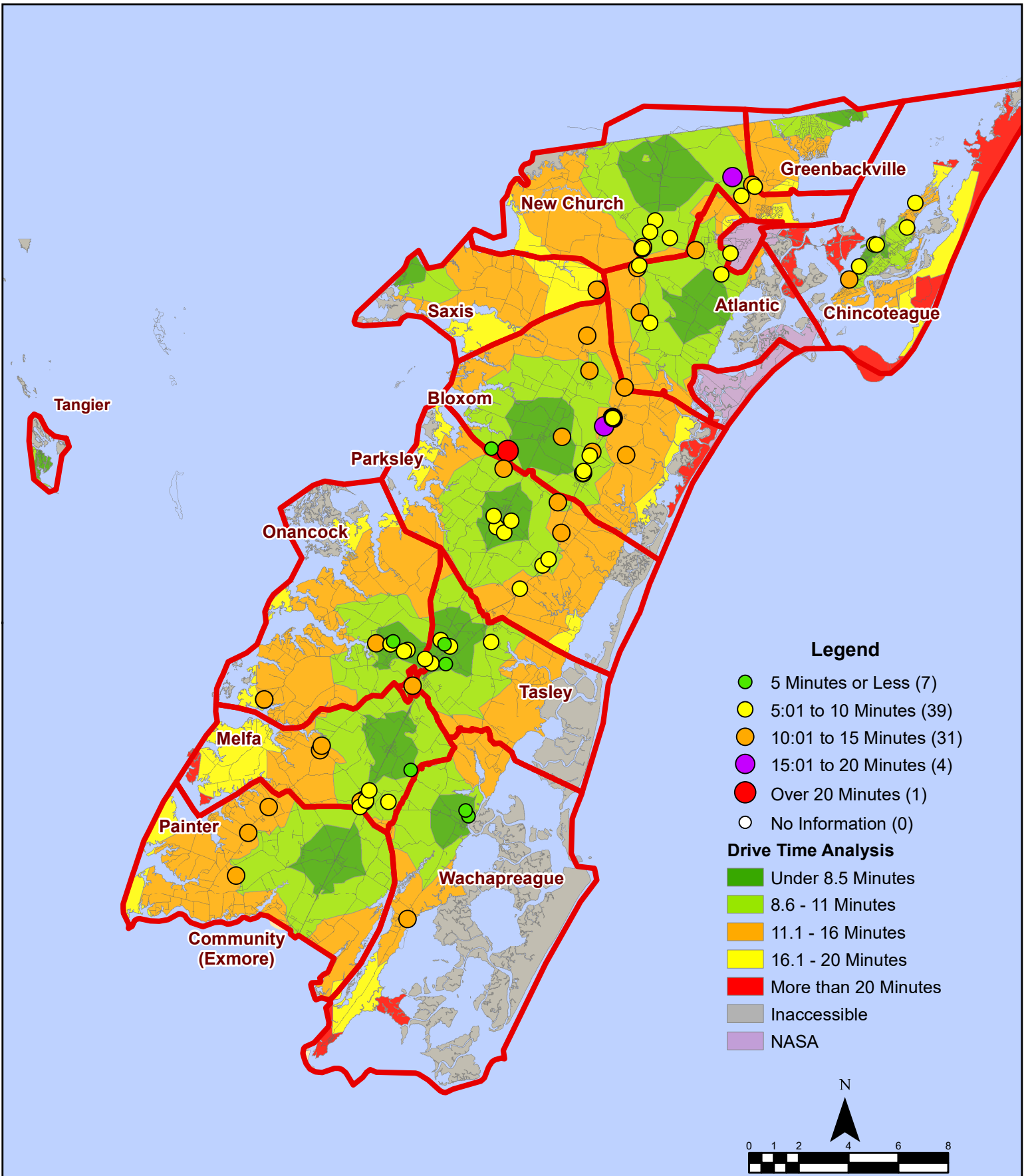
All points are plotted using X and Y coordinates provided by the ESVA 911 Center. Points may be plotted over one another when they are in close proximity.

Map Prepared by the Accomack County Department of Building, Planning & Economic Development using data from the ESVA 911 Center - December 18, 2023

# November 2023 Fire Calls By Response Time



# November 2023 Fire Calls By Response Time



All points are plotted using X and Y coordinates provided by the ESVA 911 Center. Points may be plotted over one another when they are in close proximity.