

September 2022

Fire - Performance Measure Data *					
Response District	Total Calls in District	Greater than 20 min. Response Time	Longest Response Time	Calls Handled by other agency	Overall Station Benchmark %
New Church	9	0	0:15:29	0	100.0%
Greenbackville	1	0	0:13:10	0	100.0%
Chincoteague	6	0	0:13:55	0	100.0%
Atlantic	8	0	0:13:23	0	100.0%
Saxis	3	0	0:12:33	0	100.0%
Bloxom	17	0	0:16:39	1	100.0%
Parksley	22	0	0:15:44	1	100.0%
Tasley	10	1	0:37:52*	3	90.0%
Onancock	5	0	0:08:45	0	100.0%
Melfa	13	1	0:21:58	6	92.3%
Wachapreague	5	0	0:12:54	0	100.0%
Painter	12	0	0:17:12	2	100.0%
Tangier					#DIV/0!
System Totals	111	2	0:37:52	13	98.2%

*time included arrival of school authority

EMS - Performance Measure Data						
Response District	Total Calls in District	Greater than 20 min. Response Time	Longest Response Time	Calls Handled by other agency	Station Benchmark Compliance %	Overall Station Reliability %
Greenbackville	33	10	0:29:42	27	69.7%	18.2%
Chincoteague	75	1	0:25:32	1	98.7%	98.7%
Saxis	11	0	0:12:42	3	100.0%	72.7%
Bloxom	45	0	0:16:19	37	100.0%	17.8%
Parksley	85	0	0:15:10	0	100.0%	100.0%
Onancock	77	0	0:14:37	3	100.0%	96.1%
Melfa	58	0	0:13:36	35	100.0%	39.7%
Wachapreague (Painter)	27	2	0:25:45	1	92.6%	96.3%
Oak Hall	89	1	0:28:13	1	98.9%	98.9%
Tangier	9	1	0:41:58	0	88.9%	100.0%
Community (Exmore)	6	0	0:08:55	3	100.0%	50.0%
System Totals	515	15	0:41:58	111	97.1%	78.4%

EMS Mutual Aid Data															
	Station Giving Aid														
	Greenbackville	Chincoteague	Saxis	Bloxom	Parksley	Onancock	Melfa	Wachapreague/Painter	Oak Hall	Community (Exmore)	Northampton	Wallops	NORS	2nd Call	3rd Call
Greenbackville									27				26	1	
Chincoteague								1						1	
Saxis								3					2	1	
Bloxom					25				12				37		
Parksley															
Onancock							1	1	1				2	1	
Melfa						13	22						35		
Wachapreague (Painter)													1		
Oak Hall		1							1					1	
Community (Exmore)								3					3		
Northampton Co.															
Wallops															
Totals	0	1	0	0	25	13	1	26	44	1	0	0	106	5	0

Station Receiving Aid

Transport Destination			
Hospital Destination by Unit	Riverside - Shore Memorial	PRMC / Tidal Health	Other
Chincoteague	11	26	2
Saxis	4		
Bloxom	4	1	
Parksley	104	1	4
Onancock	39		
Melfa	10		
Wachapreague (Painter)	41		
Oak Hall	57	30	2
Wallops			
Totals	271	61	8

Benchmark = The Accomack County Board of Supervisors established a 20 minute standard for emergency response.

NORS = No Response by station or the call was handled by another station or agency.

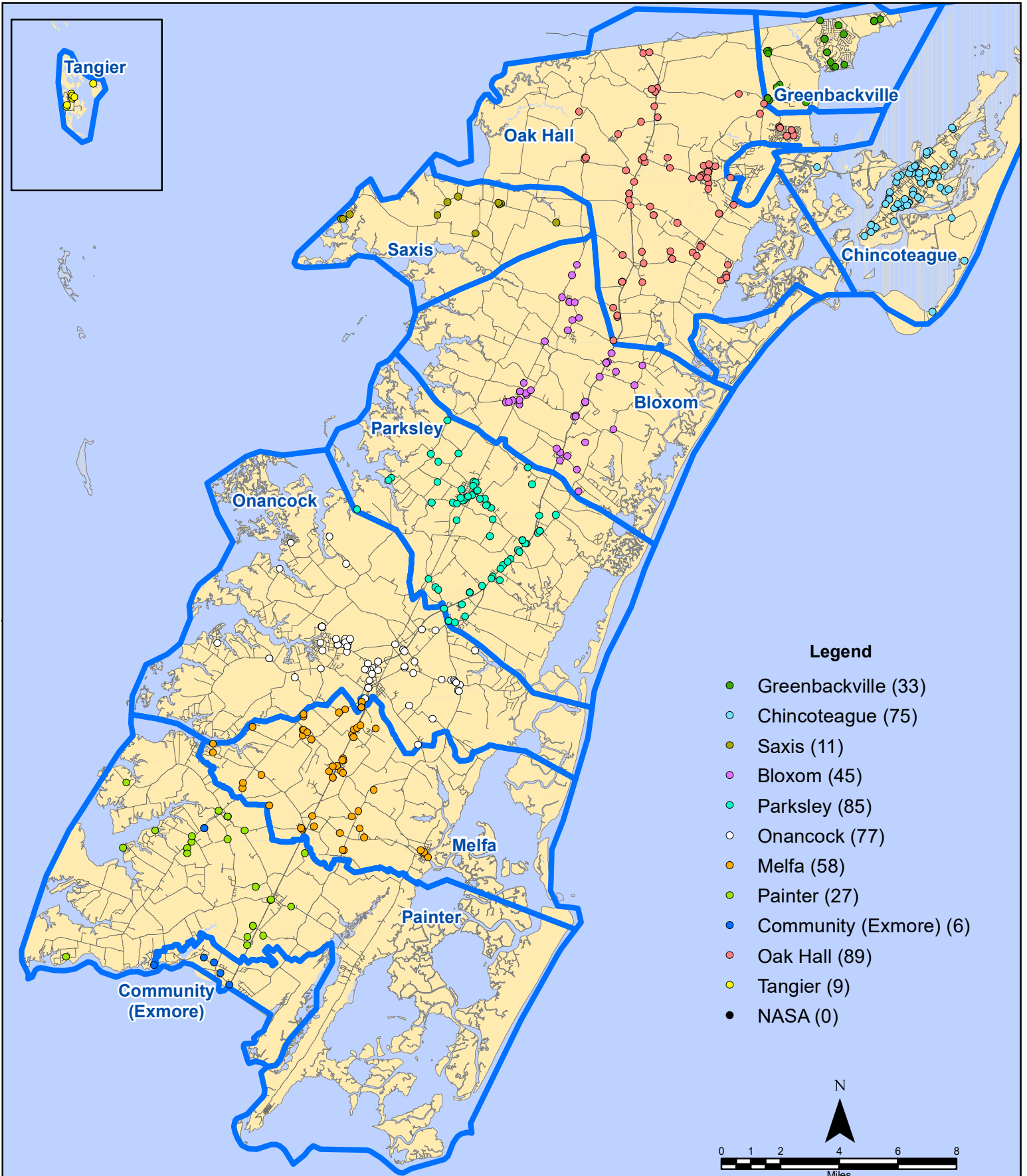
2nd Call = 2nd ambulance call received while first ambulance was on another call.

3rd Call = 3rd ambulance call received while first & second ambulances were on other calls.

* This data excludes F1 Med (Medical Assist) calls in the Fire Data.

This information was prepared using data supplied by the Eastern Shore of Virginia 911 Center. This information is original incident data only and may not be representative of all units and/or stations who responded to an incident.

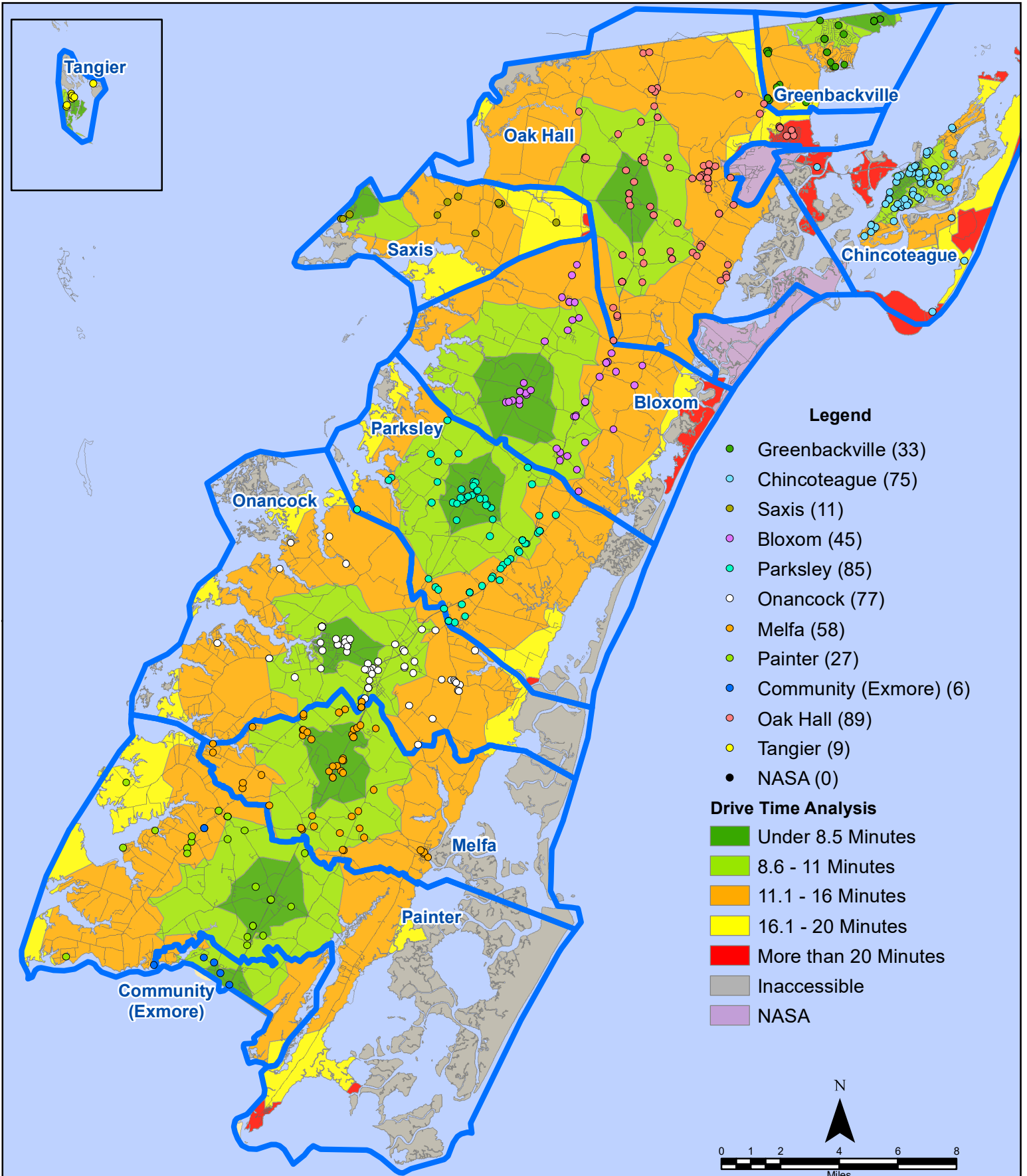
September 2022 EMS Calls By District



All points are plotted using X and Y coordinates provided by the ESVA 911 Center.
Points may be plotted over one another when they are in close proximity.

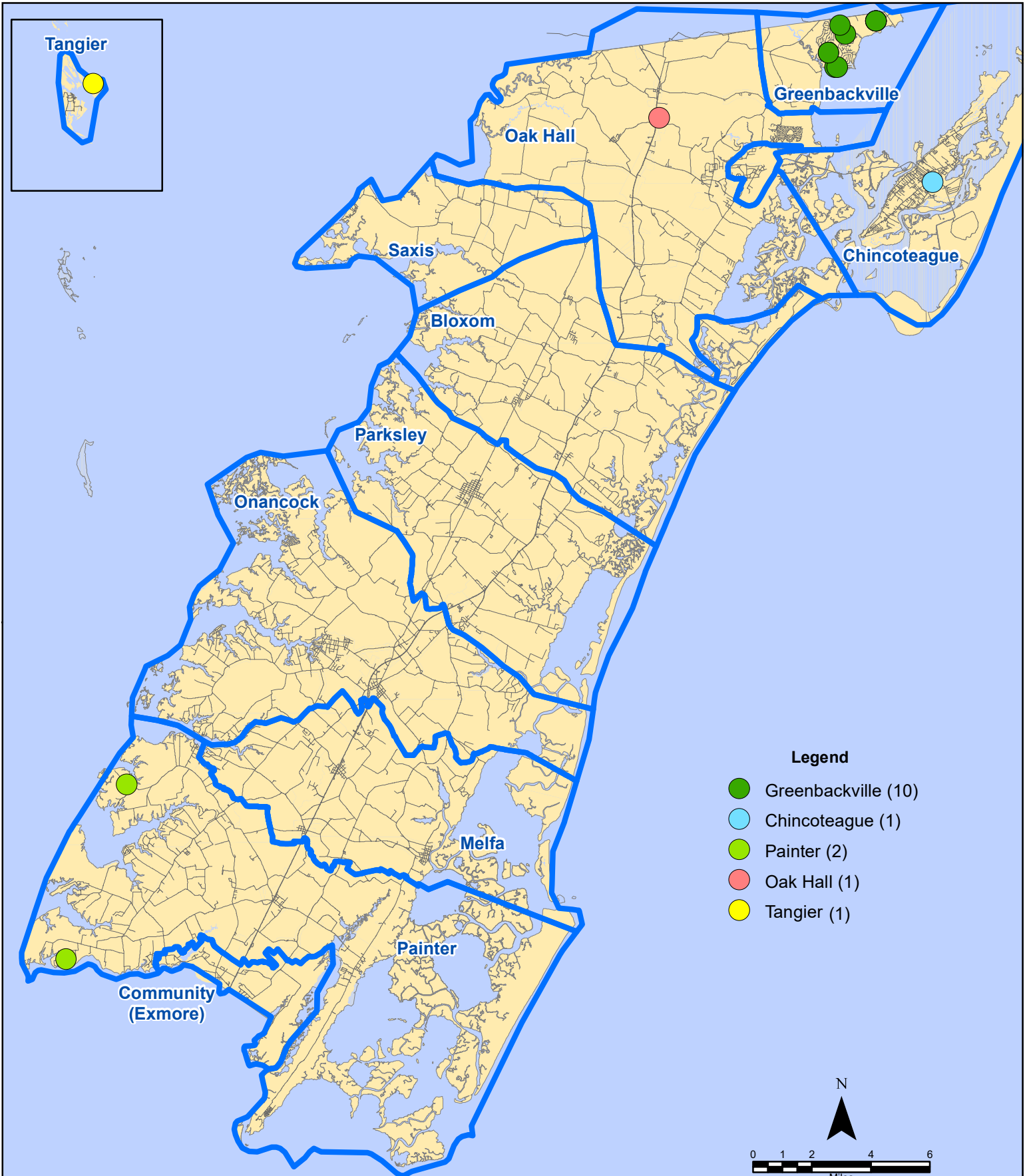
Map Prepared by the Accomack County Department of Building, Planning & Economic Development using data from the ESVA 911 Center - October 7, 2022

September 2022 EMS Calls By District



All points are plotted using X and Y coordinates provided by the ESVA 911 Center. Points may be plotted over one another when they are in close proximity.

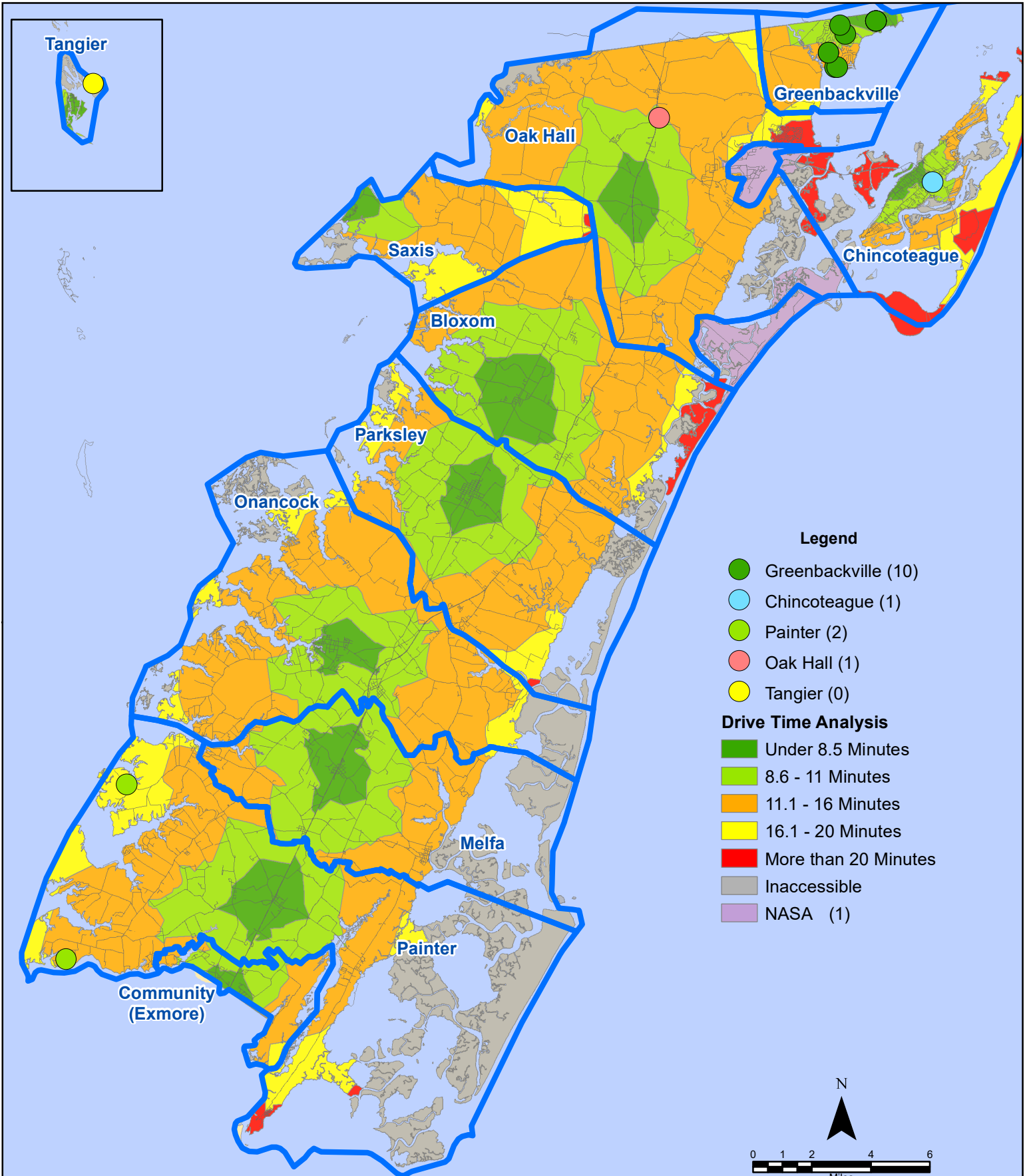
September 2022 EMS Calls With Response Time Greater Than 20 Mins.



All points are plotted using X and Y coordinates provided by the ESVA 911 Center. Points may be plotted over one another when they are in close proximity.

Map Prepared by the Accomack County Department of Building, Planning & Economic Development using data from the ESVA 911 Center - October 7, 2022

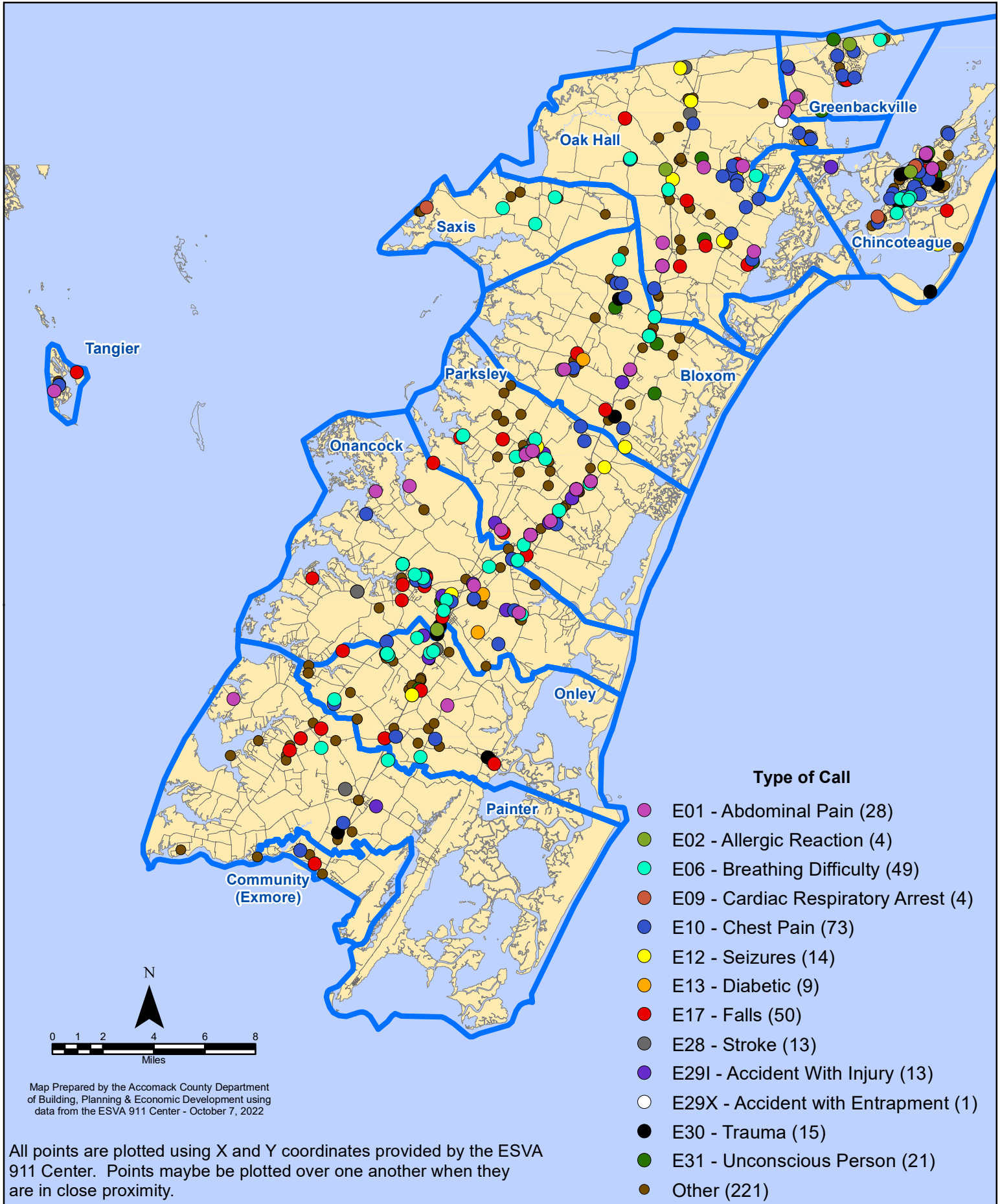
September 2022 EMS Calls With Response Time Greater Than 20 Mins.



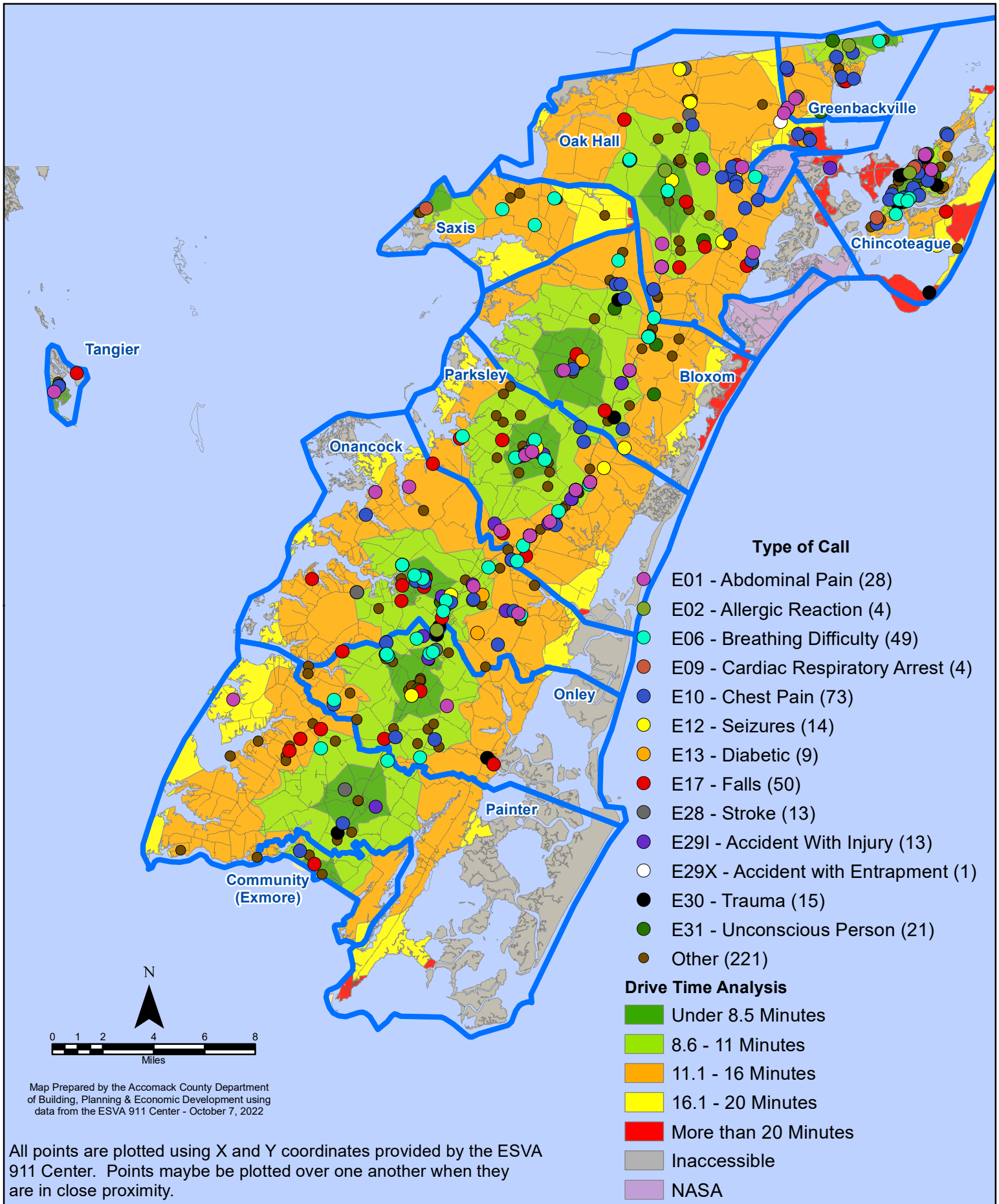
All points are plotted using X and Y coordinates provided by the ESVA 911 Center. Points may be plotted over one another when they are in close proximity.

Map Prepared by the Accomack County Department of Building, Planning & Economic Development using data from the ESVA 911 Center - October 7, 2022

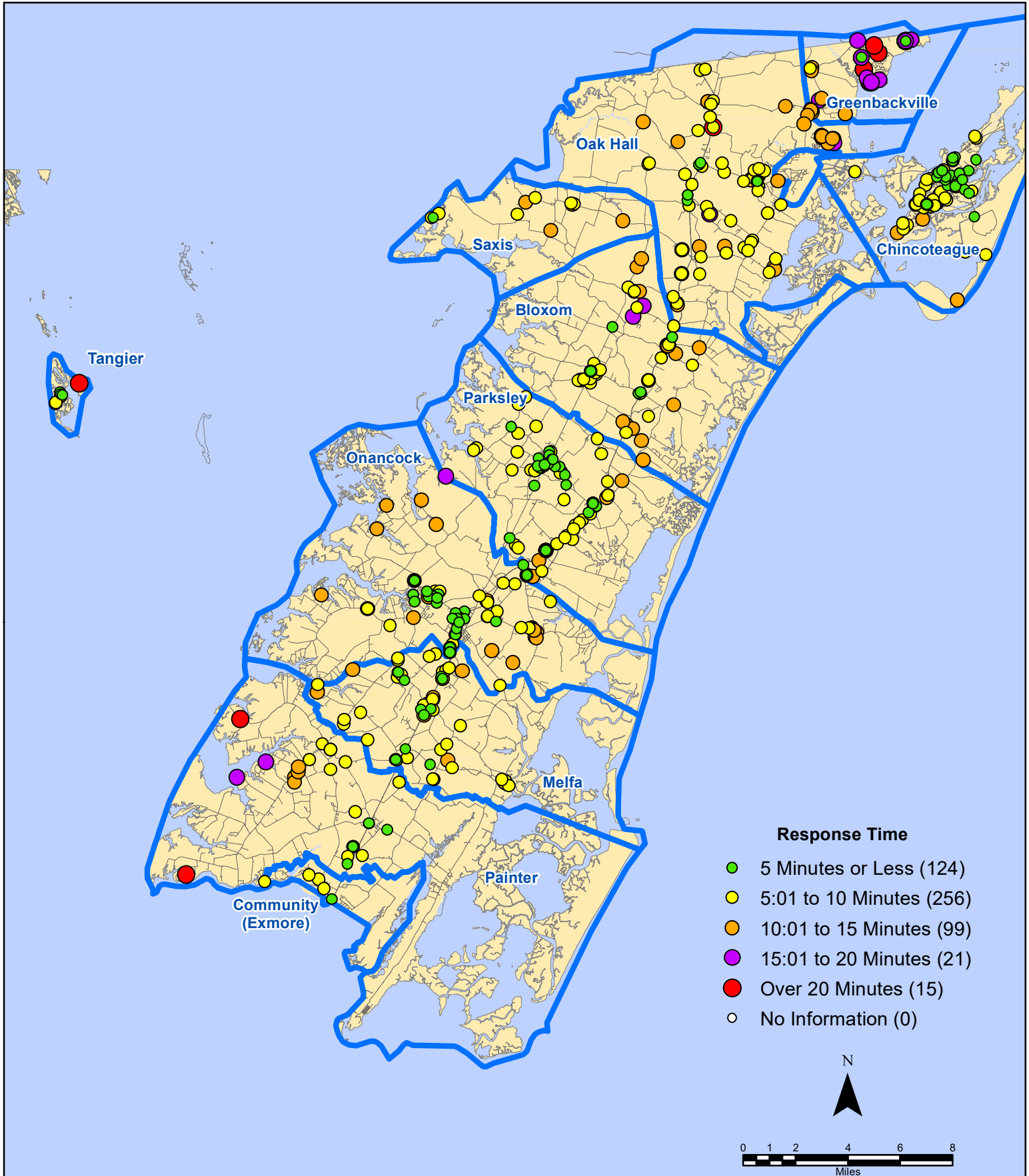
September 2022 EMS Calls By Type



September 2022 EMS Calls By Type



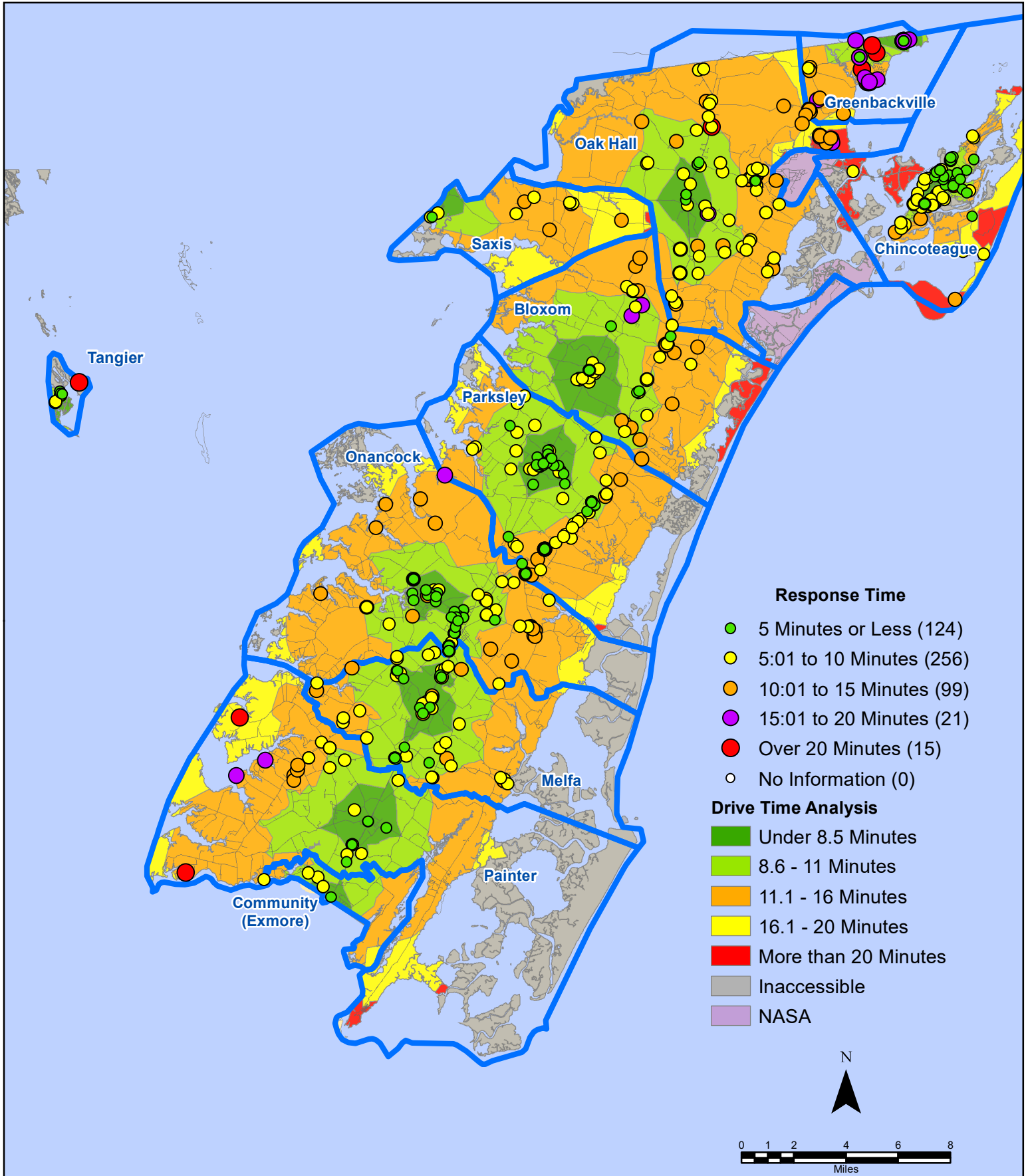
September 2022 EMS Calls By Response Time



All points are plotted using X and Y coordinates provided by the ESVA 911 Center.
Points may be plotted over one another when they are in close proximity.

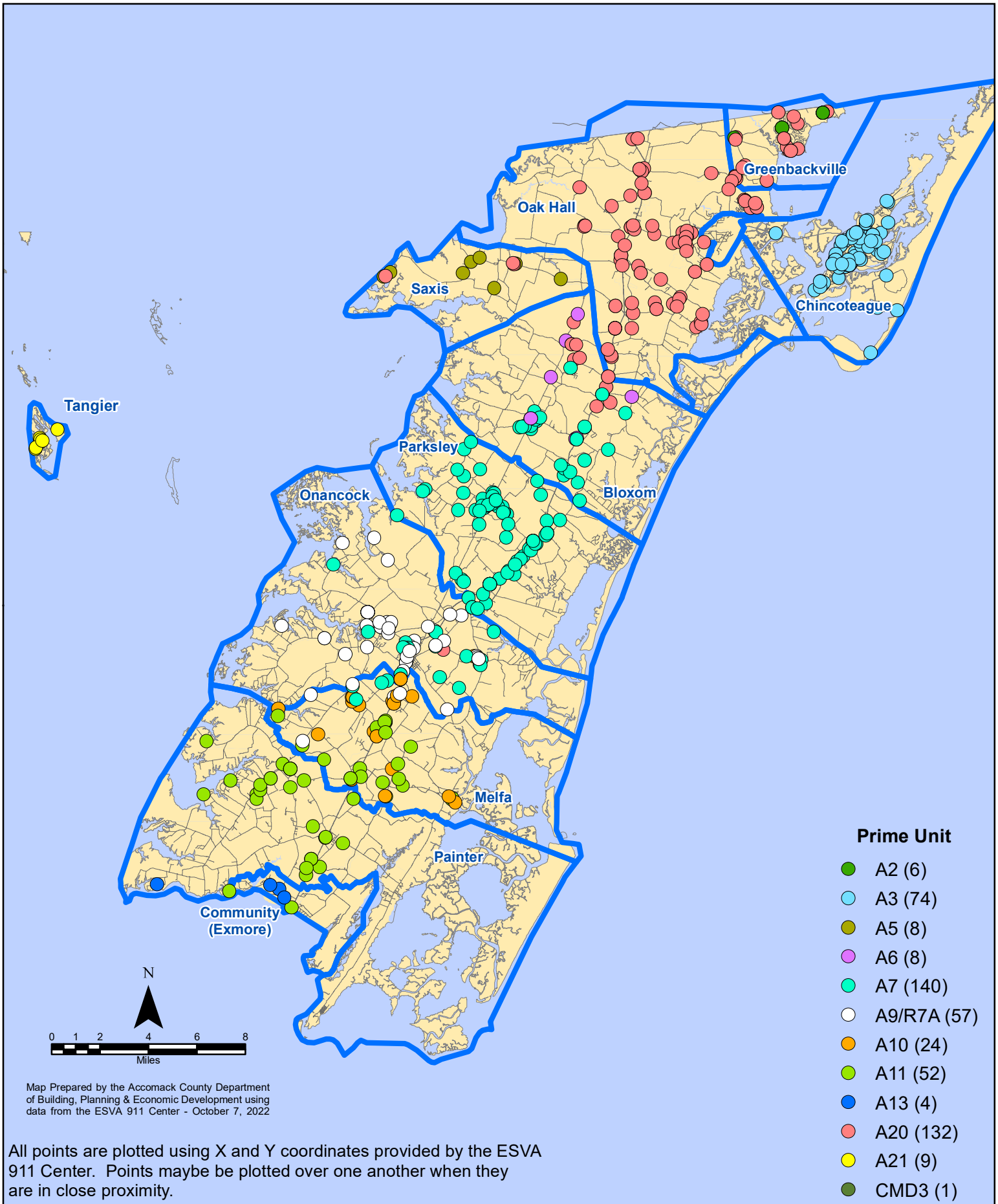
Map Prepared by the Accomack County Department
of Building, Planning & Economic Development using
data from the ESVA 911 Center - October 7, 2022

September 2022 EMS Calls By Response Time

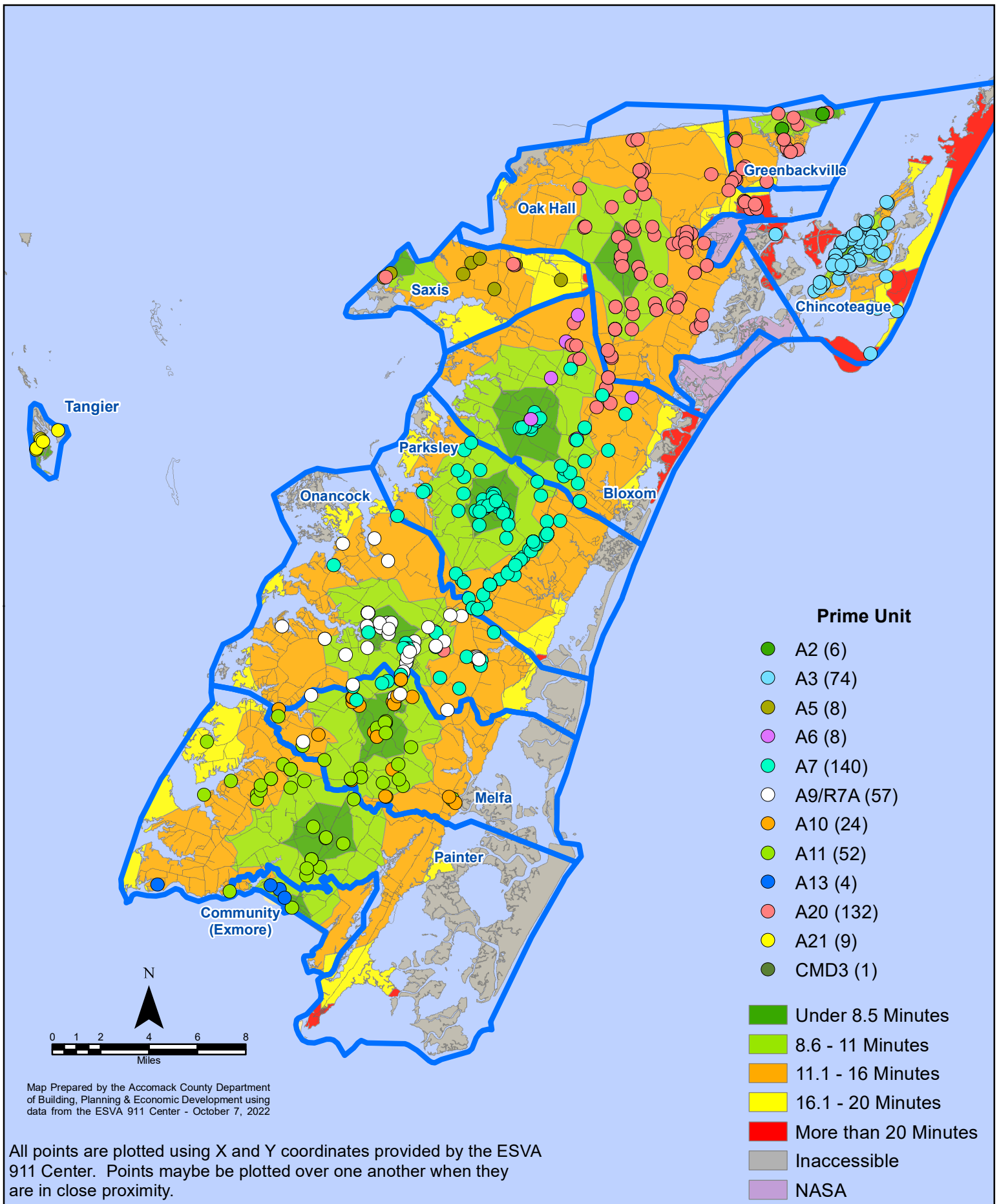


All points are plotted using X and Y coordinates provided by the ESVA 911 Center. Points may be plotted over one another when they are in close proximity.

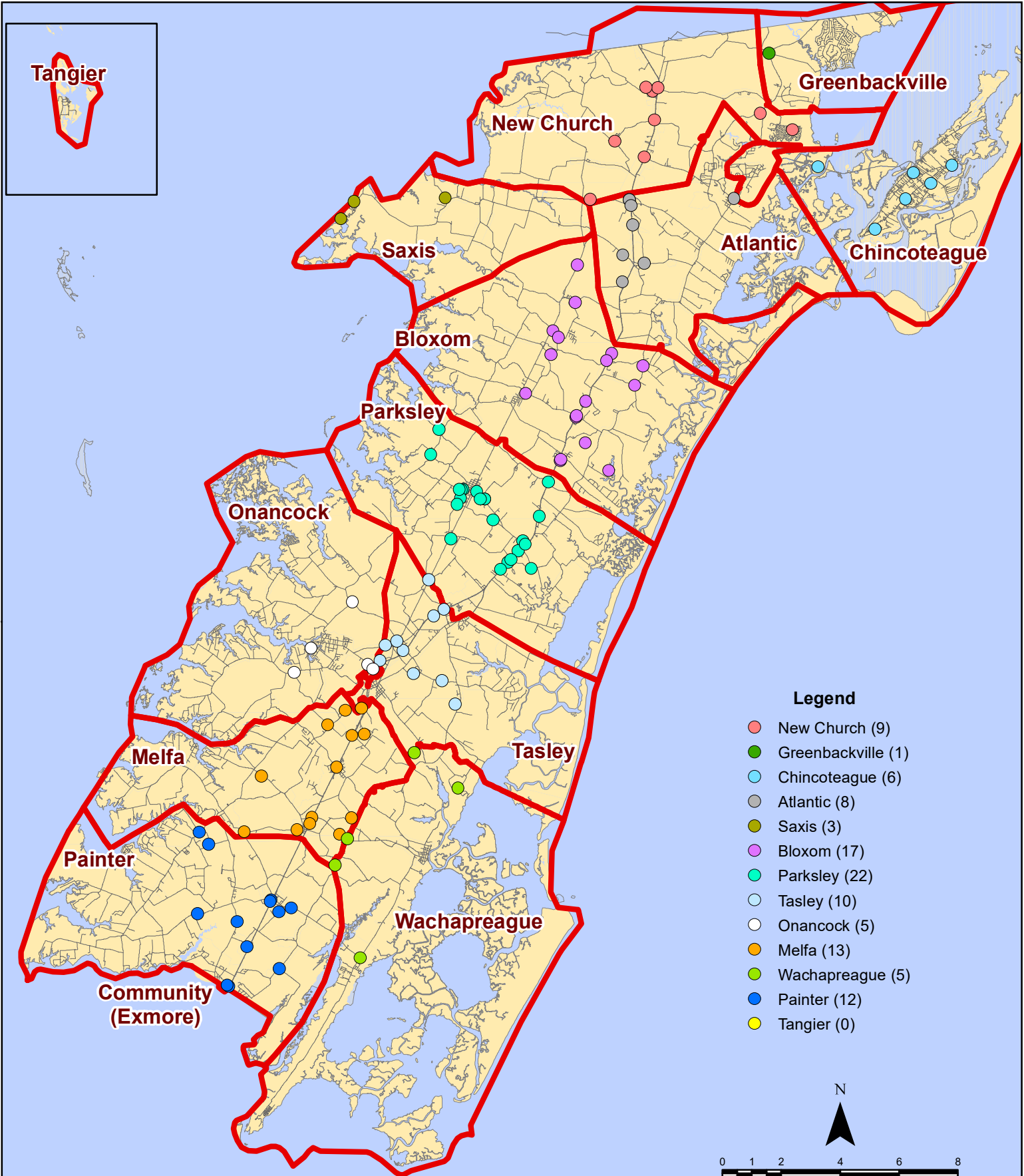
September 2022 EMS Calls By Prime Unit



September 2022 EMS Calls By Prime Unit



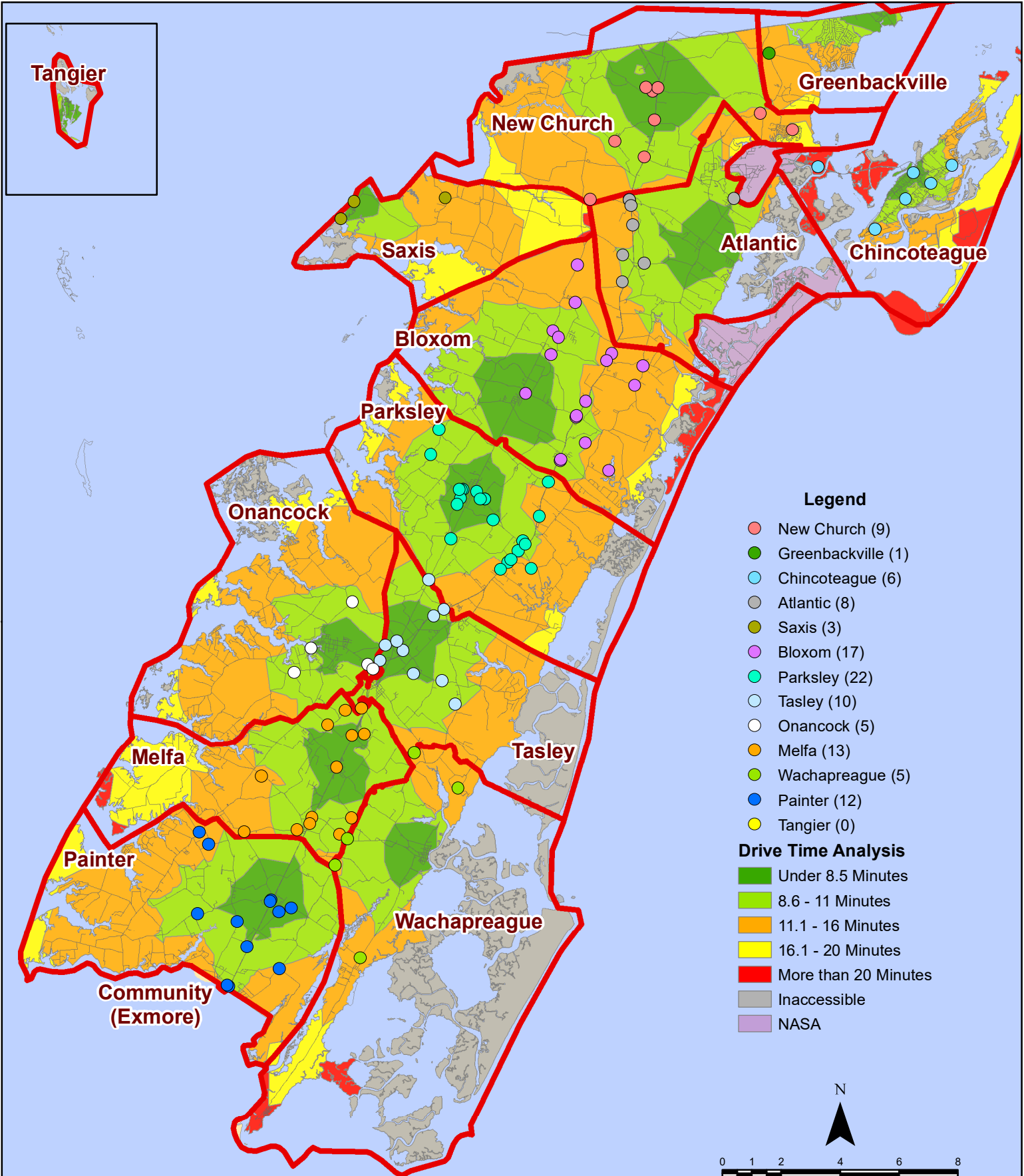
September 2022 Fire Calls By District



All points are plotted using X and Y coordinates provided by the ESVA 911 Center. Points may be plotted over one another when they are in close proximity.

Map Prepared by the Accomack County Department of Building, Planning & Economic Development using data from the ESVA 911 Center - October 7, 2022

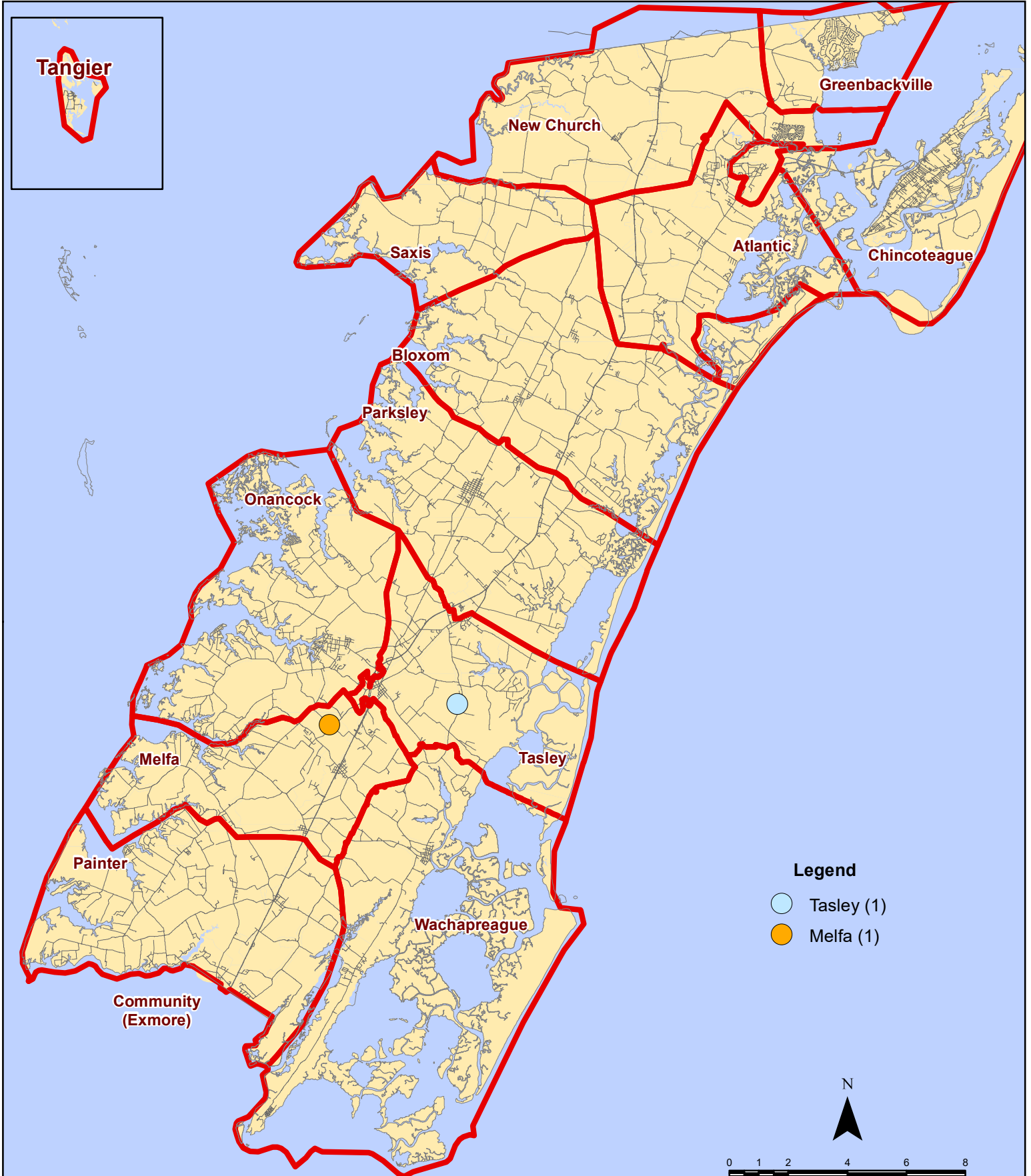
September 2022 Fire Calls By District



All points are plotted using X and Y coordinates provided by the ESVA 911 Center. Points may be plotted over one another when they are in close proximity.

Map Prepared by the Accomack County Department of Building, Planning & Economic Development using data from the ESVA 911 Center - October 7, 2022

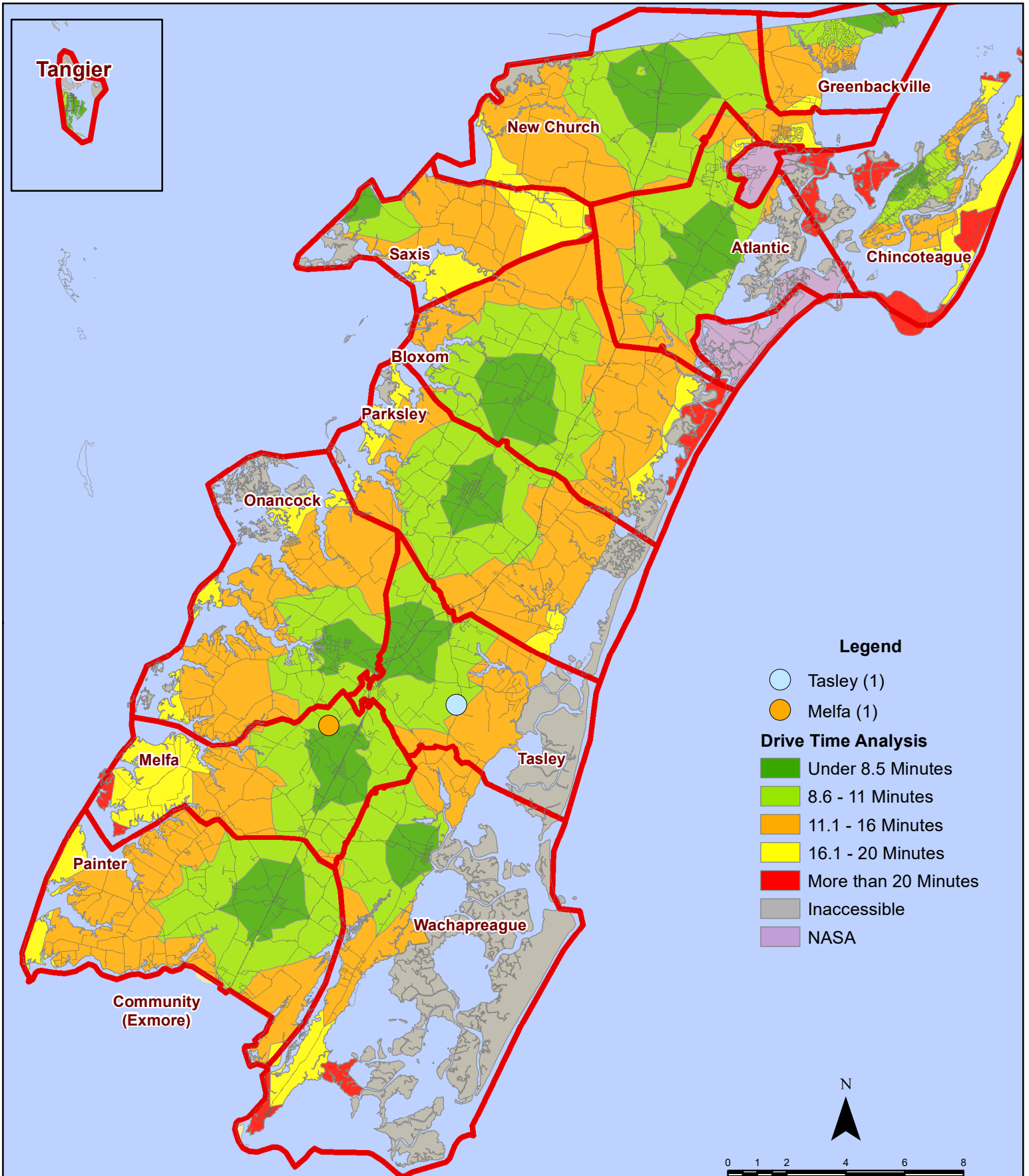
September 2022 Fire Calls With Response Time Greater Than 20 Mins.



All points are plotted using X and Y coordinates provided by the ESVA 911 Center. Points may be plotted over one another when they are in close proximity.

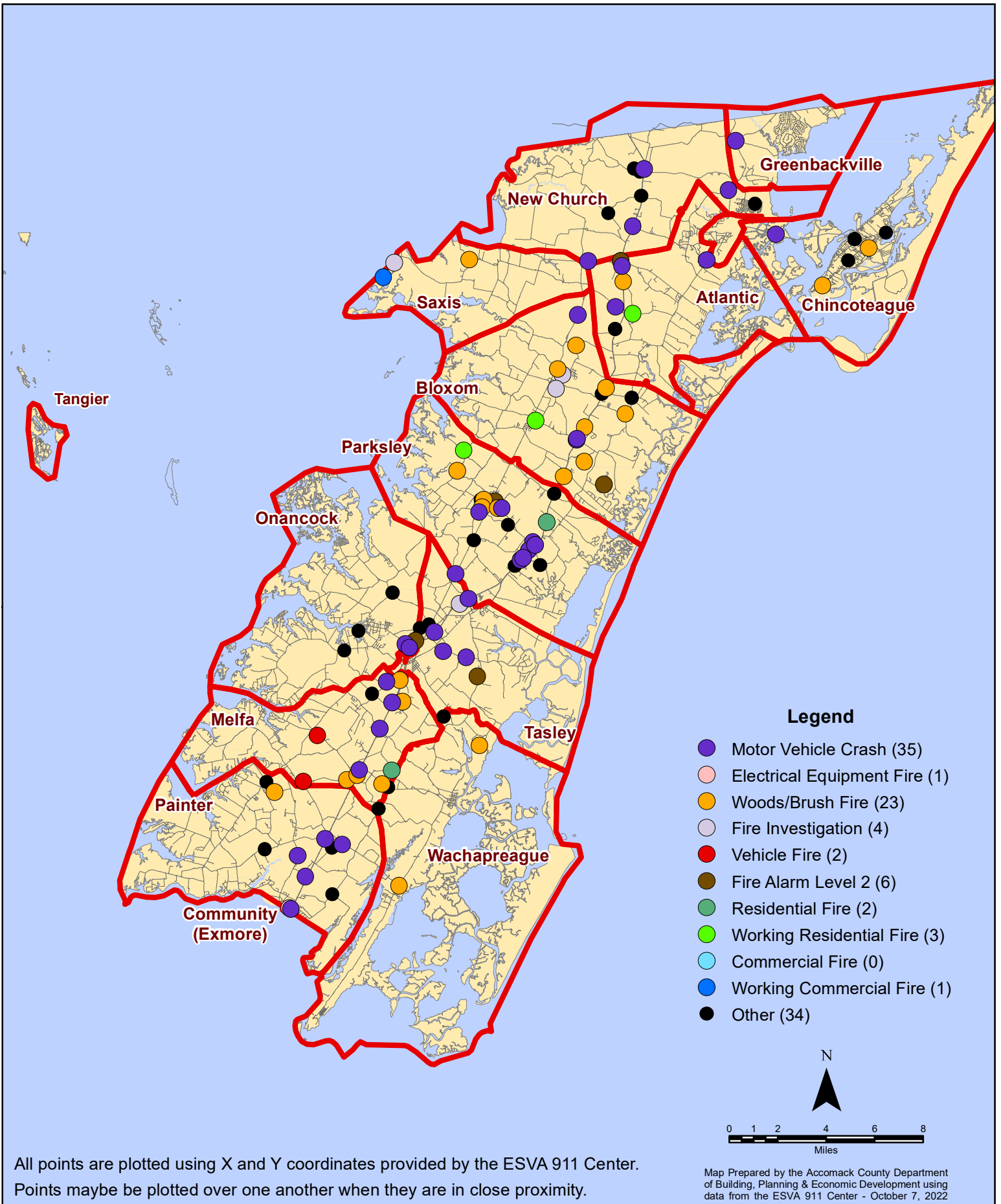
Map Prepared by the Accomack County Department of Building, Planning & Economic Development using data from the ESVA 911 Center - October 7, 2022

September 2022 Fire Calls With Response Time Greater Than 20 Mins.

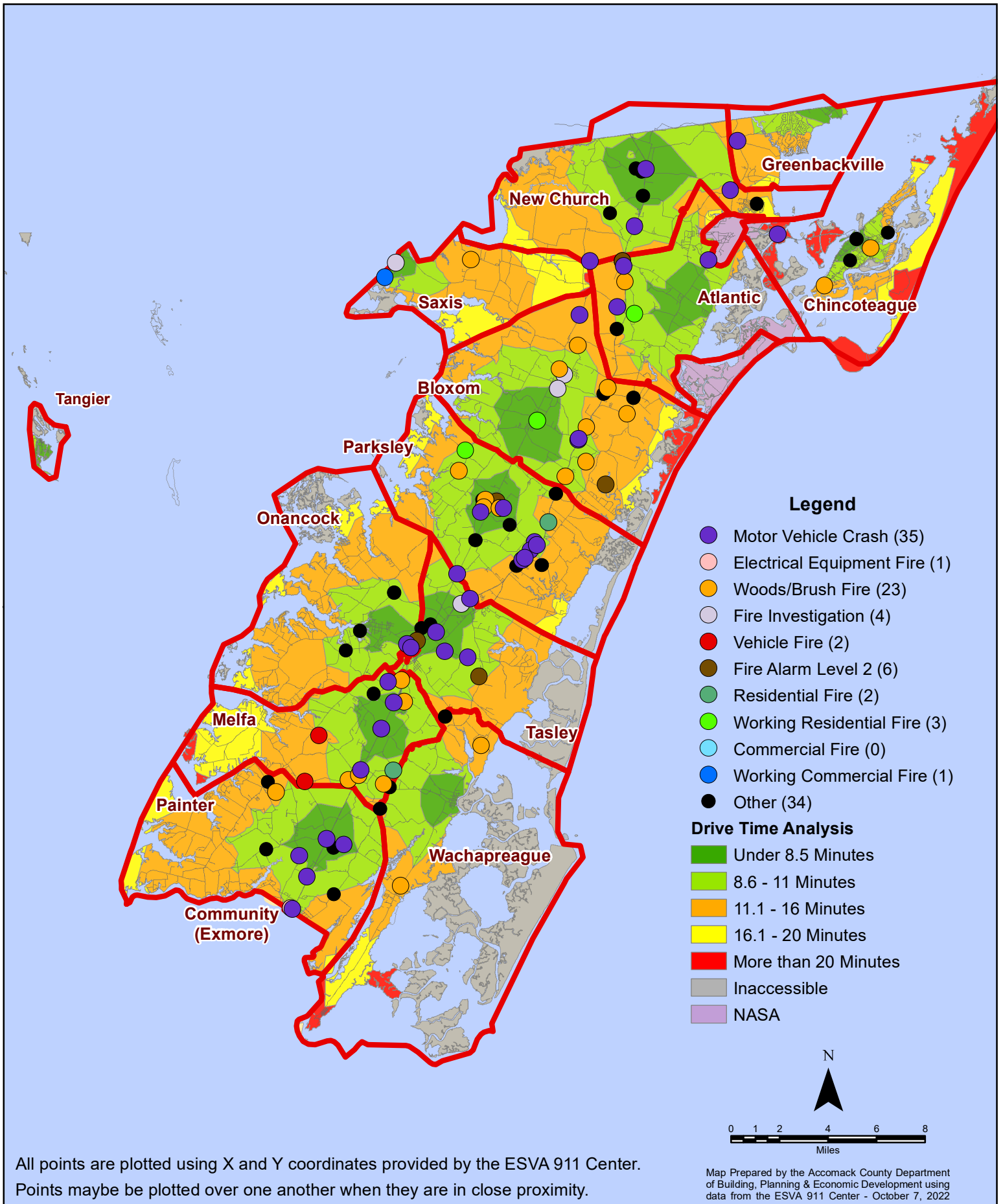


All points are plotted using X and Y coordinates provided by the ESVA 911 Center. Points may be plotted over one another when they are in close proximity.

September 2022 Fire Calls By Type



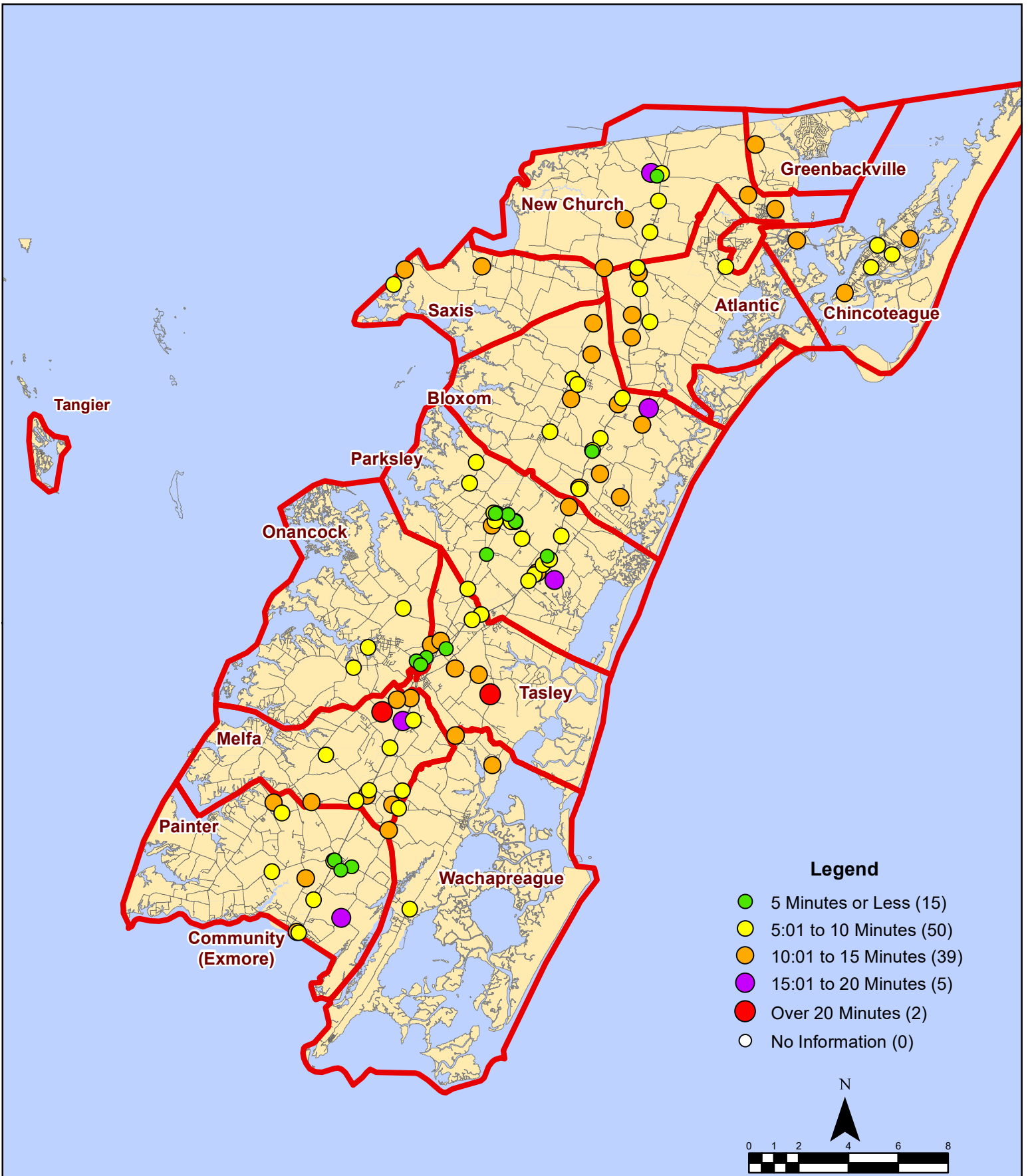
September 2022 Fire Calls By Type



All points are plotted using X and Y coordinates provided by the ESVA 911 Center. Points may be plotted over one another when they are in close proximity.

Map Prepared by the Accomack County Department of Building, Planning & Economic Development using data from the ESVA 911 Center - October 7, 2022

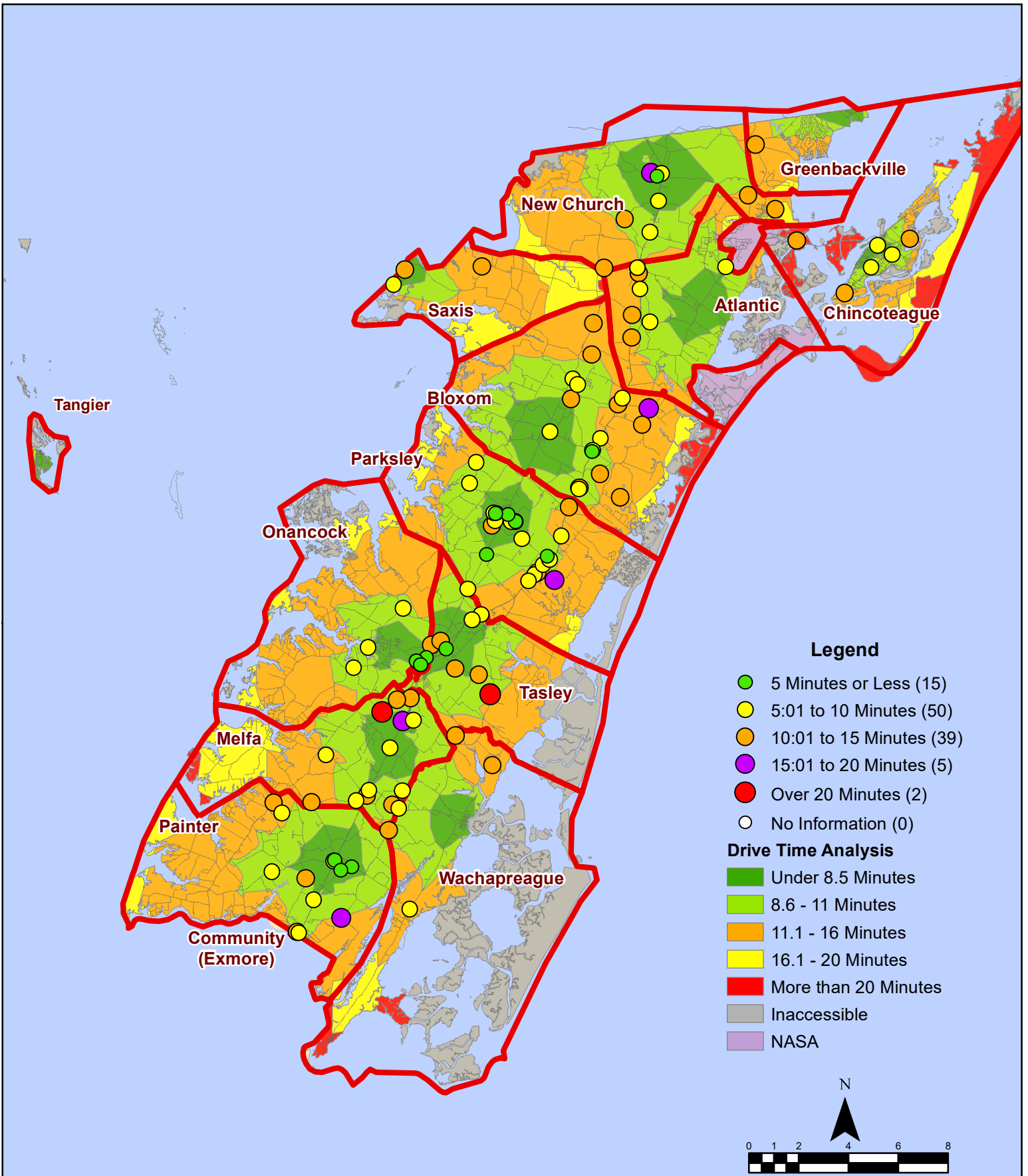
September 2022 Fire Calls By Response Time



All points are plotted using X and Y coordinates provided by the ESVA 911 Center. Points may be plotted over one another when they are in close proximity.

Map Prepared by the Accomack County Department of Building, Planning & Economic Development using data from the ESVA 911 Center - October 7, 2022

September 2022 Fire Calls By Response Time



All points are plotted using X and Y coordinates provided by the ESVA 911 Center. Points may be plotted over one another when they are in close proximity.

Map Prepared by the Accomack County Department of Building, Planning & Economic Development using data from the ESVA 911 Center - October 7, 2022