

**Fire - Performance Measure Data**

District	Total Calls	Greater than 20 min. Response	%	Max. Response Time	NORS
New Church	6	1	83%	20:54	0
Greenbackville	1	0	100%	11:47	0
Chincoteague	N/A	N/A	N/A	N/A	N/A
Atlantic	41	0	100%	14:14	0
Saxis	3	0	100%	17:12	0
Bloxom	12	0	100%	10:57	0
Parksley	12	0	100%	9:10	0
Tasley	4	0	100%	10:13	0
Onancock	7	0	100%	9:24	0
Melfa	18	0	100%	18:43	0
Wachapreague	1	0	100%	11:23	0
Painter	10	0	100%	13:53	0
Onley	8	0	100%	16:35	0
Tangier	0	0	N/A	N/A	0
Totals:	123	1	99%		0

Chincoteague Data Not Available

**EMS - Performance Measure Data**

District	Total Calls	Career	Combination	Greater than 20 min. Response	%	Max. Response Time	NORS
Greenbackville	14	0	7	4	71%	48:45	5
Chincoteague	N/A	N/A	N/A	N/A	N/A	N/A	N/A
Saxis	12	2	2	4	67%	29:59	2
Bloxom	77	38	25	8	90%	44:44	15
Parksley	104	35	62	2	98%	40:08	0
Onancock	46	25	33	2	96%	39:58	0
Melfa	83	27	0	0	100%	17:28	0
Wachapreague	14	1	4	0	100%	15:12	5
Onley	55	28	34	2	96%	29:35	0
Oak Hall	106	41	60	17	84%	42:17	0
Tangier	9	0	7	0	100%	16:06	0
Community (Exmore)	16	N/A	N/A	0	100%	19:38	3
Totals	536	197	234	39	93%		30

Chincoteague Data Not Available

**EMS Mutual Aid Data**

Station Receiving Aid

Station : Giving Aid	Greenbackville	Chincoteague	Saxis	Bloxom	Parksley	Onancock	Melfa	Wachapreague	Onley	Oak Hall	Community (Exmore)	NORS	2nd Call	3rd Call
Greenbackville								1				5	0	0
Chincoteague		1						7				n/a	n/a	n/a
Saxis								1				2	0	0
Bloxom				4				6				15	3	0
Parksley			1	13				1				0	6	0
Onancock				1	1			4				0	3	0
Melfa					1		3	2				0	1	0
Wachapreague						1						5	0	0
Onley					1	1						0	6	0
Oak Hall	5		5									0	15	1
Community (Exmore)							3					3	0	0
North. Co.										3				
Total	5	n/a	2	18	6	3	1	6	6	16	0	30	34	1

**August 2012**

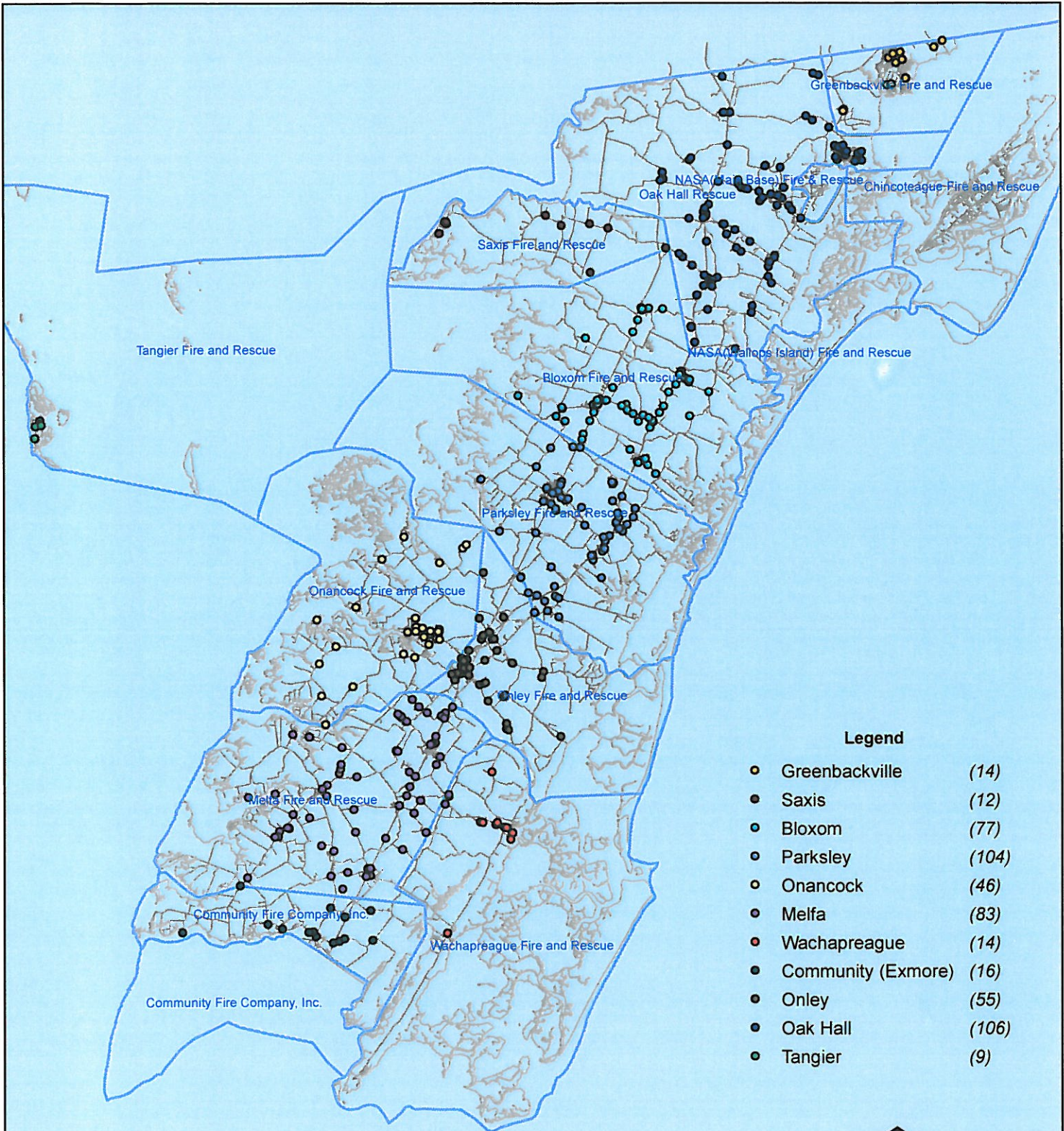
NORS = No Response. Call was handled by another station/agency.

2nd Call = 2nd Ambulance call received while First Ambulance was busy on another call.

3rd Call = 3rd ambulance call received while First and Second Ambulances were on other call.

This information was prepared using data supplied by the Eastern Shore of Virginia 911 Center  
 This information is original incident data only and may not be representative of all units or stations who responded to an incident.

# August 2012 EMS Calls By District



No Data Available For Chincoteague

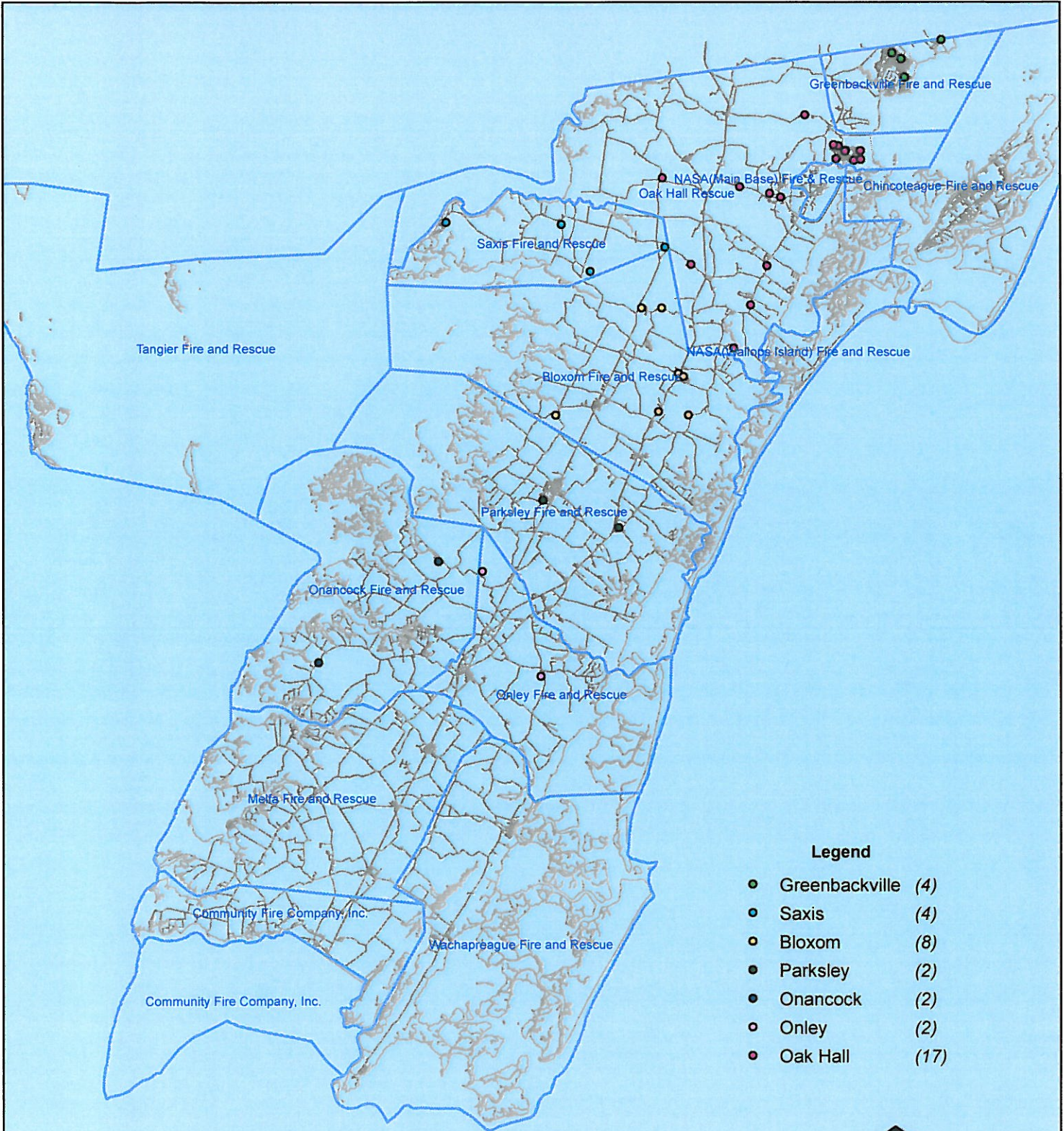


0 4,950 9,900 19,800 29,700 39,600 Feet

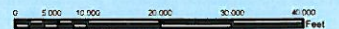
All points are plotted using X and Y coordinates provided by the ESVA 911 Center. Points may be plotted over one another when they are in close proximity.

Map Prepared using Data from the ESVA 911 Center

# August 2012 EMS Calls With Response Time Greater Than 20 Mins.



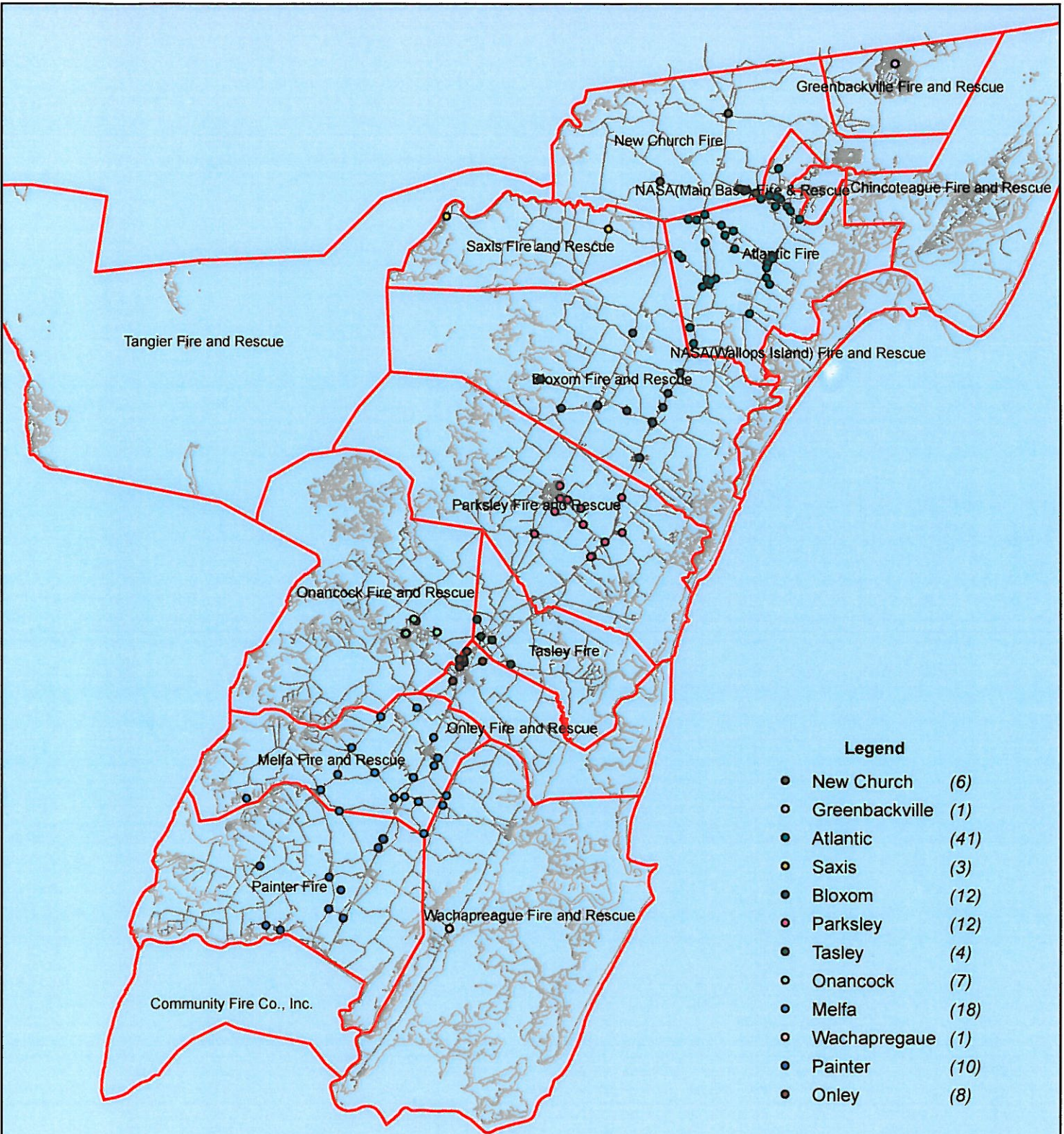
No Data Available For Chincoteague



All points are plotted using X and Y coordinates provided by the ESVA 911 Center. Points may be plotted over one another when they are in close proximity.

Map Prepared using Data from the ESVA 911 Center

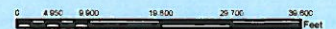
# August 2012 Fire Calls By District



No Data Available For Chincoteage

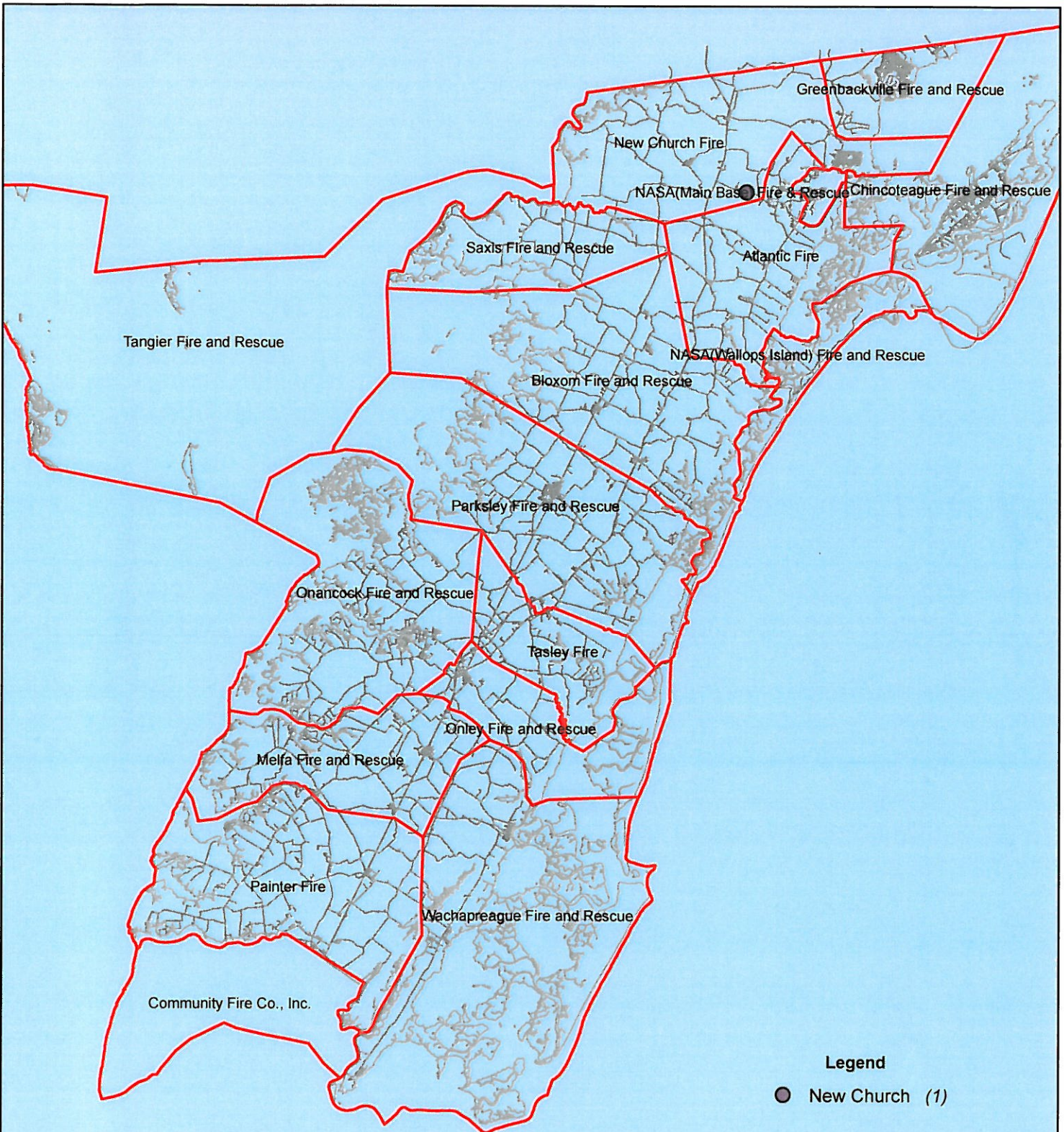


All points are plotted using X and Y coordinates provided by the ESVA 911 Center. Points may be plotted over one another when they are in close proximity.



Map Prepared using Data from the ESVA 911 Center

# August 2012 Fire Calls With Response Time Greater Than 20 Mins.



No Data Available For Chincoteague

**Legend**  
● New Church (1)



0 5,000 10,000 20,000 30,000 40,000 Feet

All points are plotted using X and Y coordinates provided by the ESVA 911 Center. Points may be plotted over one another when they are in close proximity.

Map Prepared using Data from the ESVA 911 Center