

**Fire - Performance Measure Data**

District	Total Calls	Greater than 20 min. Response	%	Max. Response Time	NORS
New Church	15	0	100%	19:40	0
Greenbackville	2	0	100%	11:18	0
Chincoteague	N/A	N/A	N/A	N/A	N/A
Atlantic	25	0	100%	17:24	0
Saxis	4	0	100%	13:53	0
Bloxom	17	0	100%	16:29	0
Parksley	19	0	100%	18:56	0
Tasley	13	0	100%	11:32	0
Onancock	8	0	100%	14:34	0
Melfa	20	0	100%	17:28	0
Wachapreague	1	0	100%	5:04	0
Painter	4	0	100%	11:57	0
Onley	11	0	100%	8:54	0
Tangier	0	0	N/A	N/A	0
Totals:	139	0	100%		0

Chincoteague Data Not Available

**EMS - Performance Measure Data**

District	Total Calls	Career	Combination	Greater than 20 min. Response	%	Max. Response Time	NORS
Greenbackville	13	0	2	4	69%	55:05	5
Chincoteague	N/A	N/A	N/A	N/A	N/A	N/A	N/A
Saxis	8	0	3	1	88%	20:40	1
Bloxom	54	21	29	5	91%	45:22	4
Parksley	105	48	42	6	94%	25:06	0
Onancock	30	21	18	0	100%	16:46	0
Melfa	69	20	0	3	96%	30:29	0
Wachapreague	7	8	0	0	100%	19:27	2
Onley	48	19	41	0	100%	13:09	0
Oak Hall	79	31	52	7	91%	33:51	0
Tangier	8	0	8	0	100%	12:24	0
Community (Exmore)	16	N/A	N/A	2	88%	27:34	2
Totals	437	168	195	28	94%		14

Chincoteague Data Not Available

**EMS Mutual Aid Data**

**Station Receiving Aid**

Station : Giving Aid	Greenbackville	Chincoteague	Saxis	Bloxom	Parksley	Onancock	Melfa	Wachapreague	Onley	Oak Hall	Community (Exmore)	NORS	2nd Call	3rd Call
Greenbackville												5	1	0
Chincoteague	1											n/a	n/a	n/a
Saxis												1	0	0
Bloxom				7						3		4	4	1
Parksley			2									0	9	0
Onancock			4							3		0	1	0
Melfa							2	3				0	3	0
Wachapreague												2	0	0
Onley				2	1	3						0	5	1
Oak Hall	5	1	3									0	4	0
Community (Exmore)												2	2	1
Northampton County												n/a	n/a	n/a
Total	6	n/a	1	9	9	1	3	2	6	4	3	14	29	3

**November 2012**

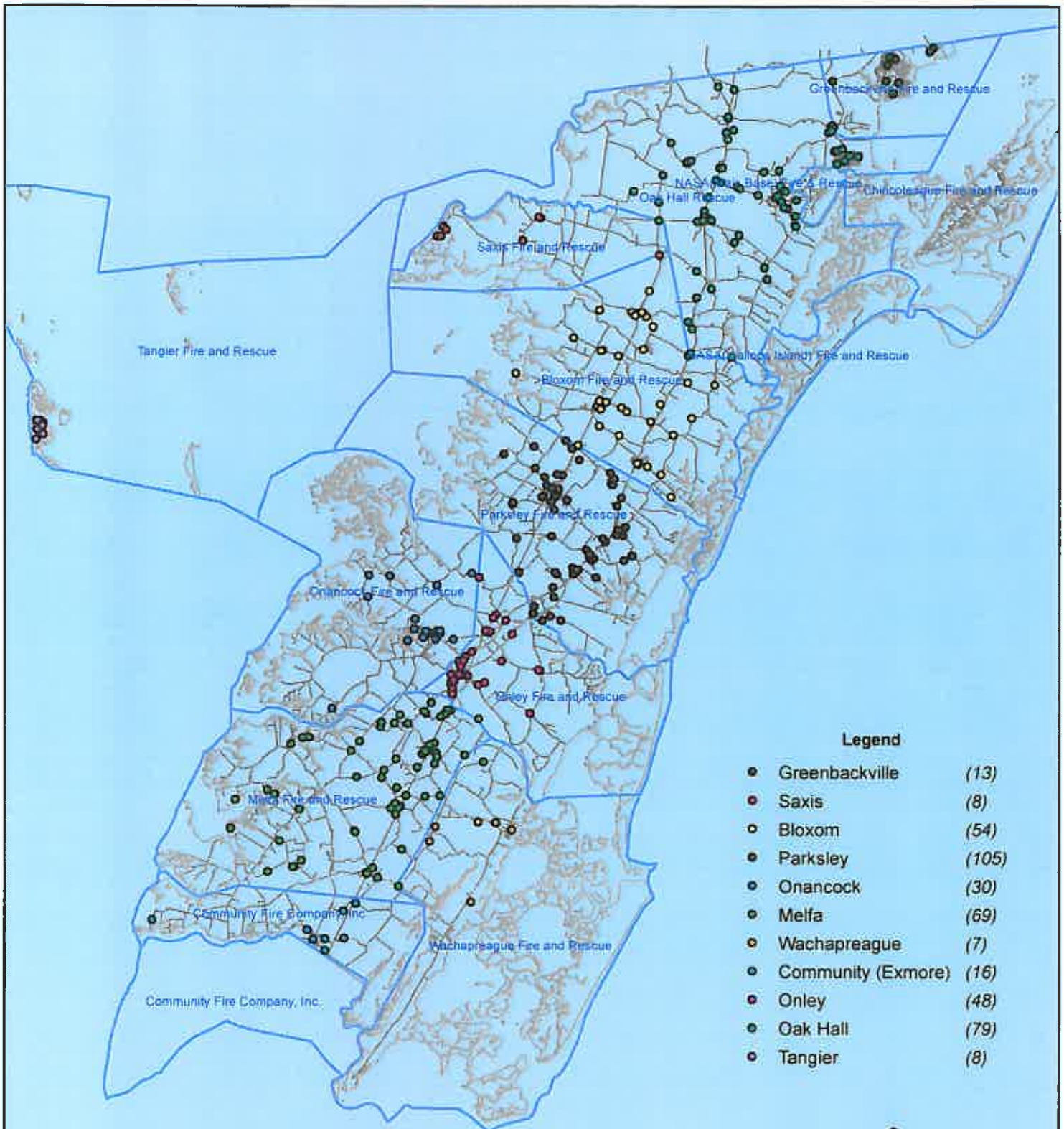
NORS = No Response. Call was handled by another station/agency.

2nd Call = 2nd Ambulance call received while First Ambulance was busy on another call.

3rd Call = 3rd ambulance call received while First and Second Ambulances were on other call.

This information was prepared using data supplied by the Eastern Shore of Virginia 911 Center  
 This information is original incident data only and may not be representative of all units or stations who responded to an incident.

# November 2012 EMS Calls By District



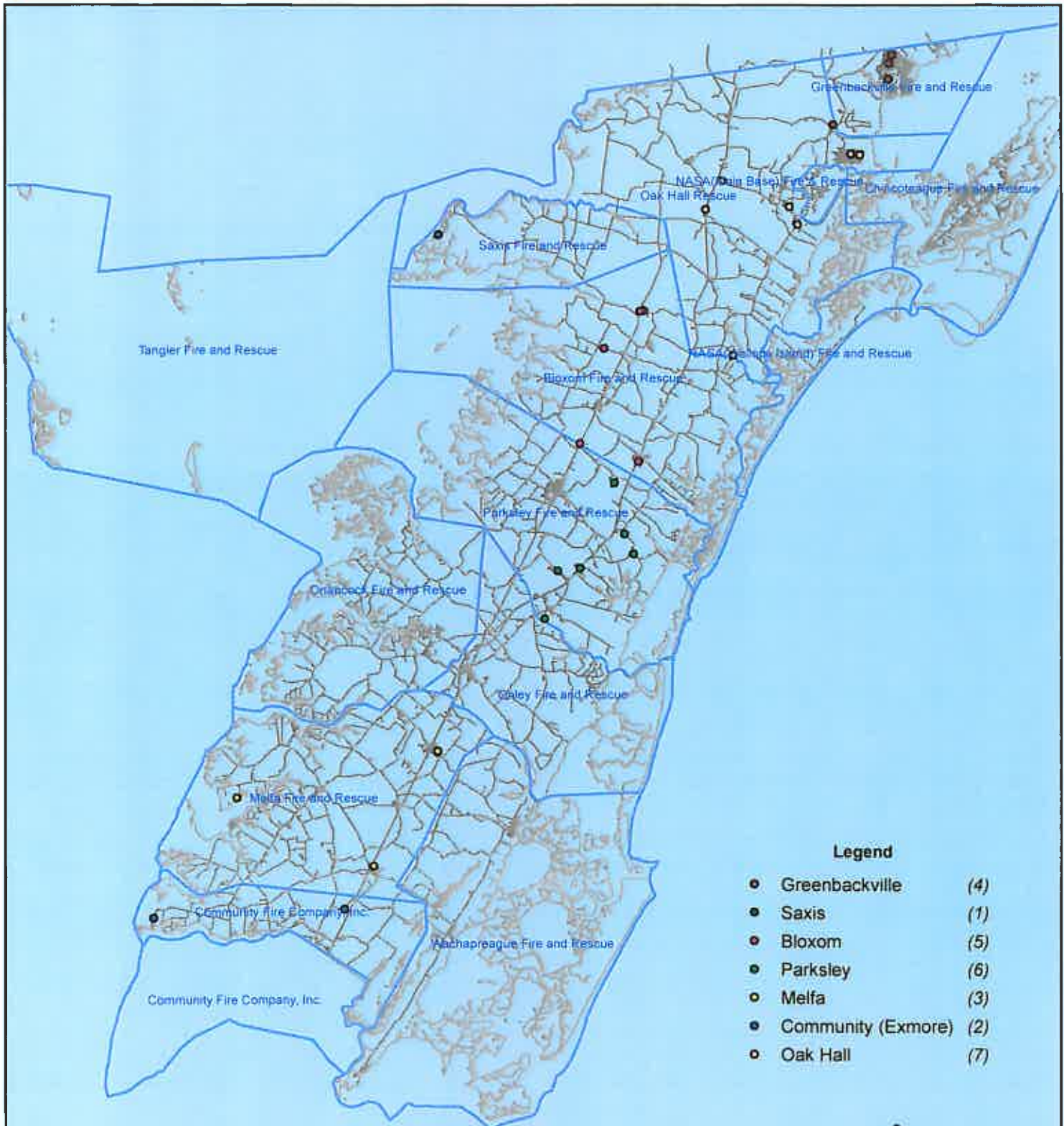
No Data Available For Chincoteague



All points are plotted using X and Y coordinates provided by the ESVA 911 Center.  
 Points maybe be plotted over one another when they are in close proximity.

Map Prepared using Data from the ESVA 911 Center.

# November 2012 EMS Calls With Response Time Greater Than 20 Mins.



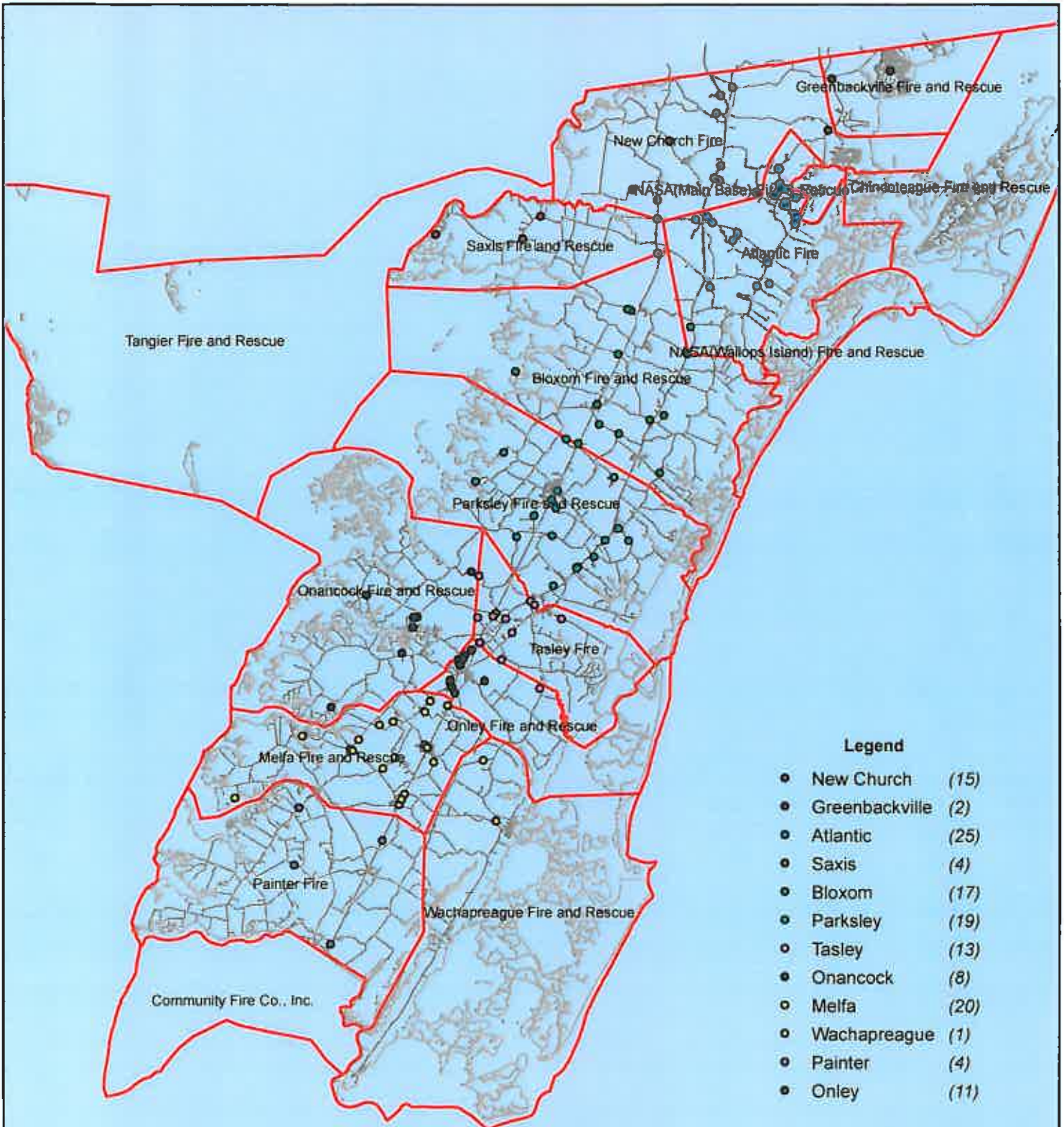
No Data Available For Chincoteague



All points are plotted using X and Y coordinates provided by the ESVA 911 Center.  
 Points maybe be plotted over one another when they are in close proximity.

Map Prepared using Data from the ESVA 911 Center

# November 2012 Fire Calls By District



No Data Available For Chincoteague



All points are plotted using X and Y coordinates provided by the ESVA 911 Center. Points may be plotted over one another when they are in close proximity.