

June 2019

Fire - Performance Measure Data *					
Response District	Total Calls in District	Greater than 20 min. Response Time	Calls Handled by other agency	Longest Response Time	Overall Station Benchmark %
New Church	10	1	1	0:43:52	90.0%
Greenbackville	3	0	0	0:14:47	100.0%
Chincoteague	12	1	0	0:40:07	91.7%
Atlantic	12	0	0	0:11:19	100.0%
Saxis	4	0	0	0:13:31	100.0%
Bloxom	7	1	2	0:22:46	85.7%
Parksley	16	0	0	0:14:03	100.0%
Tasley	8	0	1	0:11:39	100.0%
Onancock	7	0	0	0:16:43	100.0%
Melfa	10	0	2	0:17:26	100.0%
Wachapreague	6	0	3	0:16:02	100.0%
Painter	6	0	0	0:10:38	100.0%
Tangier	1	1	0	0:37:34	0.0%
System Totals	102	4	9	0:43:52	96.1%

EMS - Performance Measure Data						
Response District	Total Calls in District	Greater than 20 min. Response Time	Longest Response Time	Calls Handled by other agency	Station Benchmark Compliance %	Overall Station Reliability %
Greenbackville	14	1	0:22:47	9	92.9%	35.7%
Chincoteague	103	2	0:41:54	6	98.1%	94.2%
Saxis	13	0	0:12:49	10	100.0%	23.1%
Bloxom	37	1	0:22:30	2	97.3%	94.6%
Parksley	90	1	0:20:52	5	98.9%	94.4%
Onancock	86	1	0:22:56	7	98.8%	91.9%
Melfa	55	0	0:13:10	1	100.0%	98.2%
Wachapreague (Painter)	35	1	0:26:54	1	97.1%	97.1%
Oak Hall	93	0	0:19:09	9	100.0%	90.3%
Tangier	6	0	0:05:36	0	100.0%	100.0%
Community (Exmore)	11	0	0:12:24	3	100.0%	72.7%
System Totals	543	7	0:41:54	53	98.7%	90.2%

EMS Mutual Aid Data		Station Giving Aid														
Station Receiving Aid		Greenbackville	Chincoteague	Saxis	Bloxom	Parksley	Onancock	Melfa	Wachapreague/Painter	Oak Hall	Community (Exmore)	Northampton	Wallops	NORS	2nd Call	3rd Call
		Greenbackville		1								8				9
Chincoteague			1							4			1	3	3	
Saxis				8						2				10		
Bloxom					2									2		
Parksley				5										2	3	
Onancock					1		6								7	
Melfa						1								1		
Wachapreague (Painter)							1								1	
Oak Hall		1	4		4									2	7	
Community (Exmore)									3					3		
Northampton Co.																
Wallops																
Totals		1	5	0	18	3	1	7	3	14	0	0	1	29	21	3

Transport Destination			
Hospital Destination by Unit	Riverside - Shore Memorial	PRMC	Other
Chincoteague	19	30	2
Saxis	2		
Bloxom	32	3	
Parksley	62		
Onancock	56		
Melfa	43		
Wachapreague (Painter)	25		
Oak Hall	41		
Wallops			
Totals	281	34	2

Benchmark = The Accomack County Board of Supervisors established a 20 minute standard for emergency response.

NORS = No Response by station or the call was handled by another station or agency.

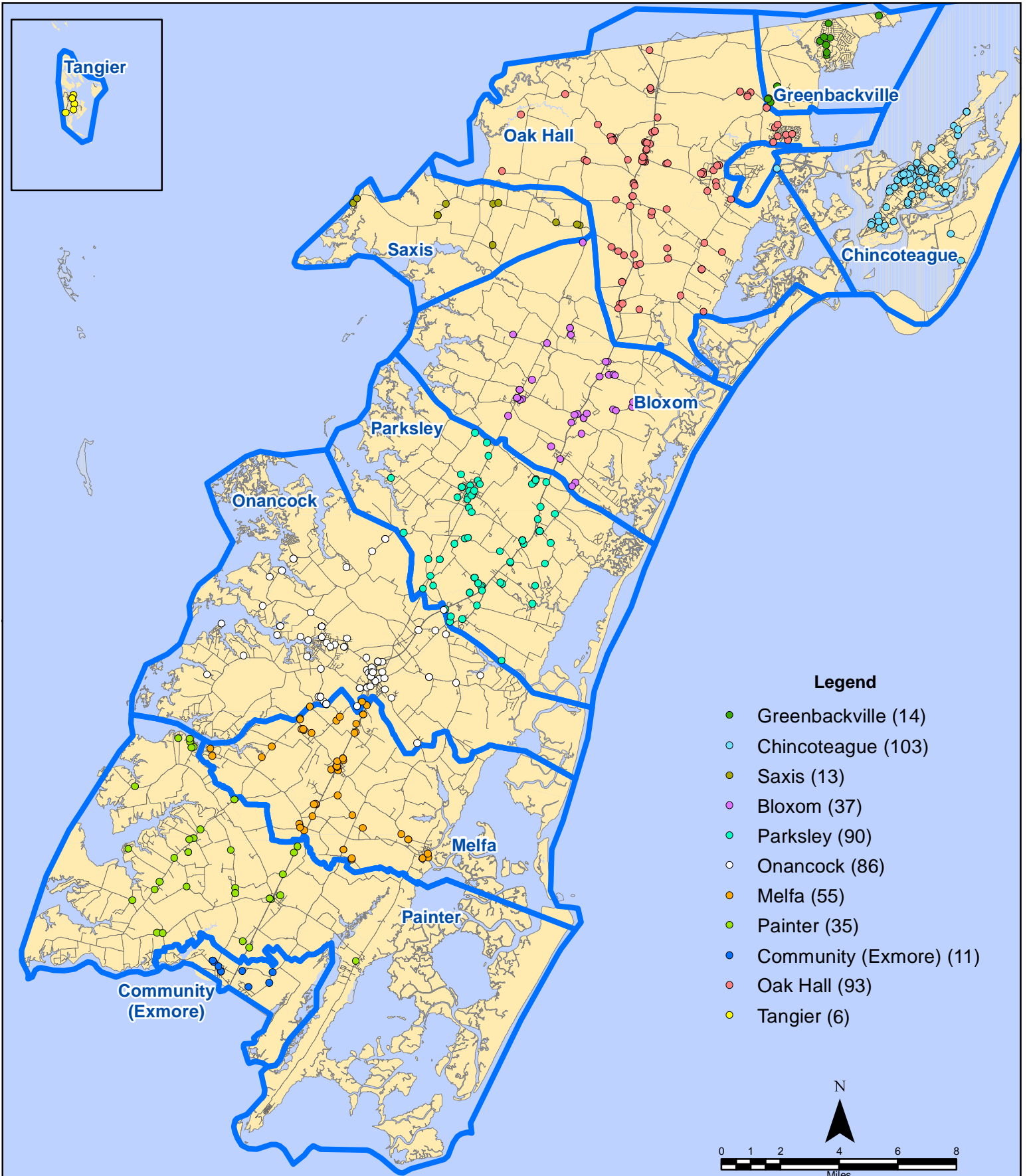
2nd Call = 2nd ambulance call received while first ambulance was on another call.

3rd Call = 3rd ambulance call received while first & second ambulances were on other calls.

* This data excludes F1 Med (Medical Assist) calls in the Fire Data.

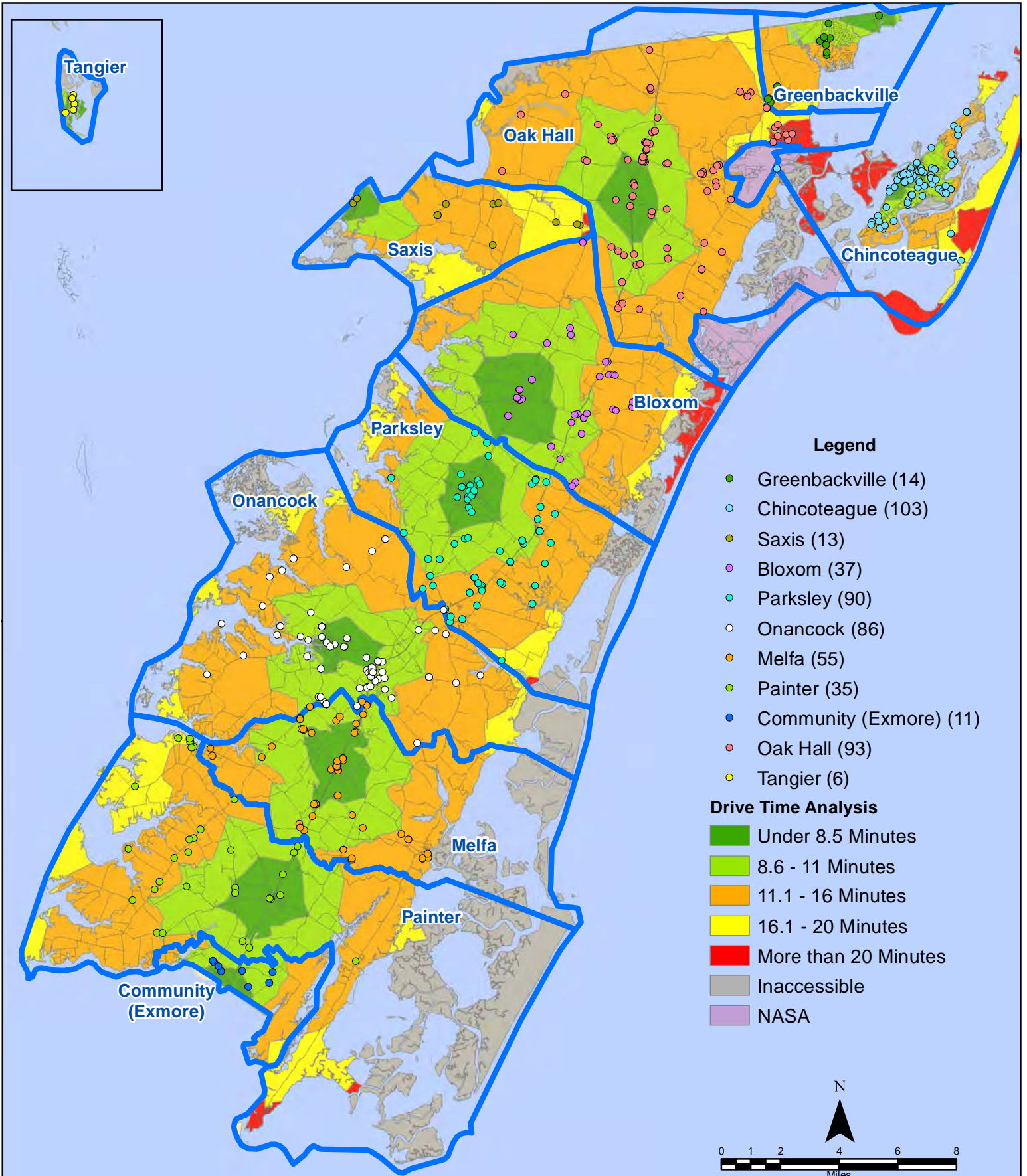
This information was prepared using data supplied by the Eastern Shore of Virginia 911 Center. This information is original incident data only and may not be representative of all units and/or stations who responded to an incident.

June 2019 EMS Calls By District



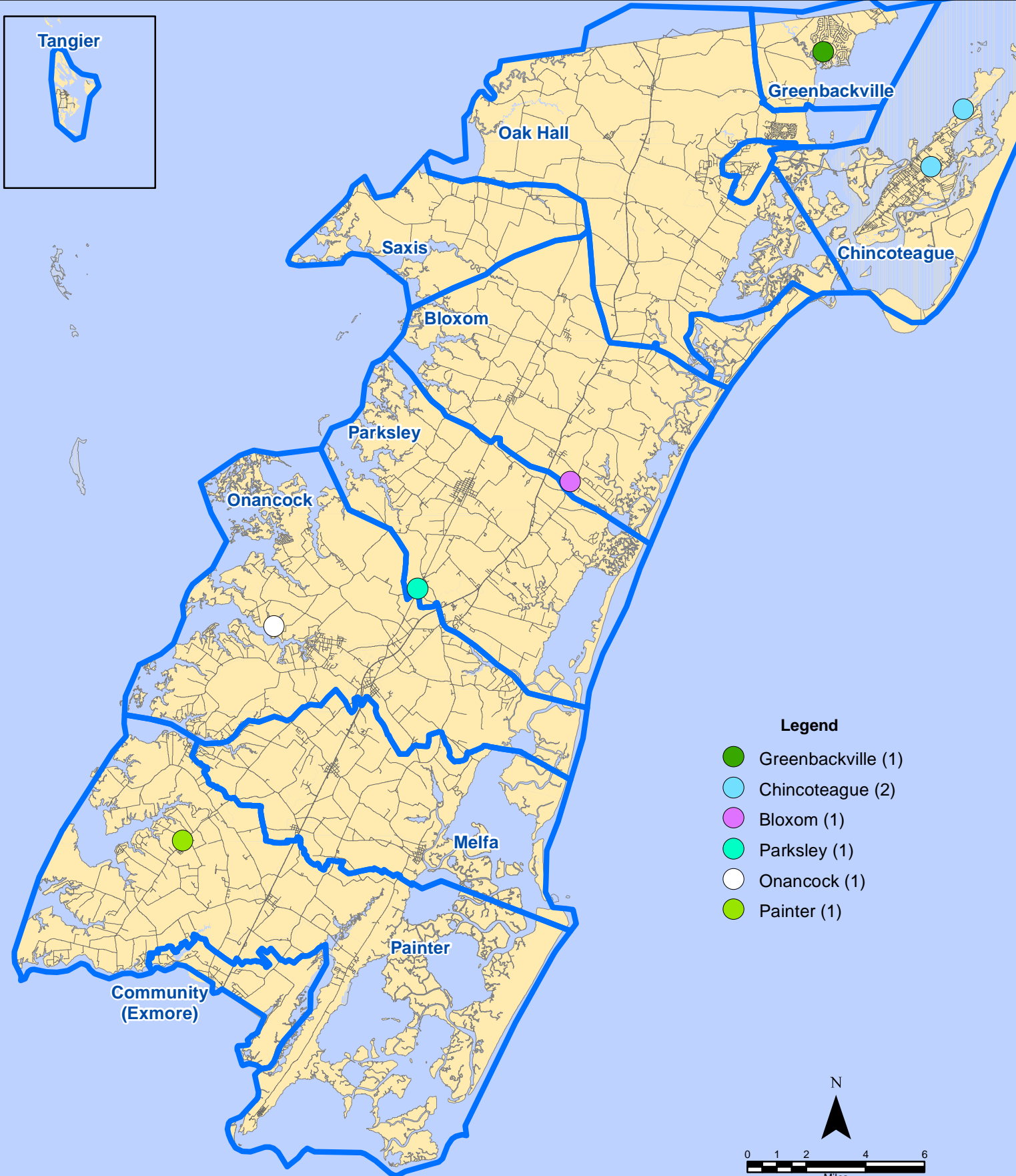
All points are plotted using X and Y coordinates provided by the ESVA 911 Center.
 Points may be plotted over one another when they are in close proximity.

June 2019 EMS Calls By District



All points are plotted using X and Y coordinates provided by the ESVA 911 Center. Points may be plotted over one another when they are in close proximity.

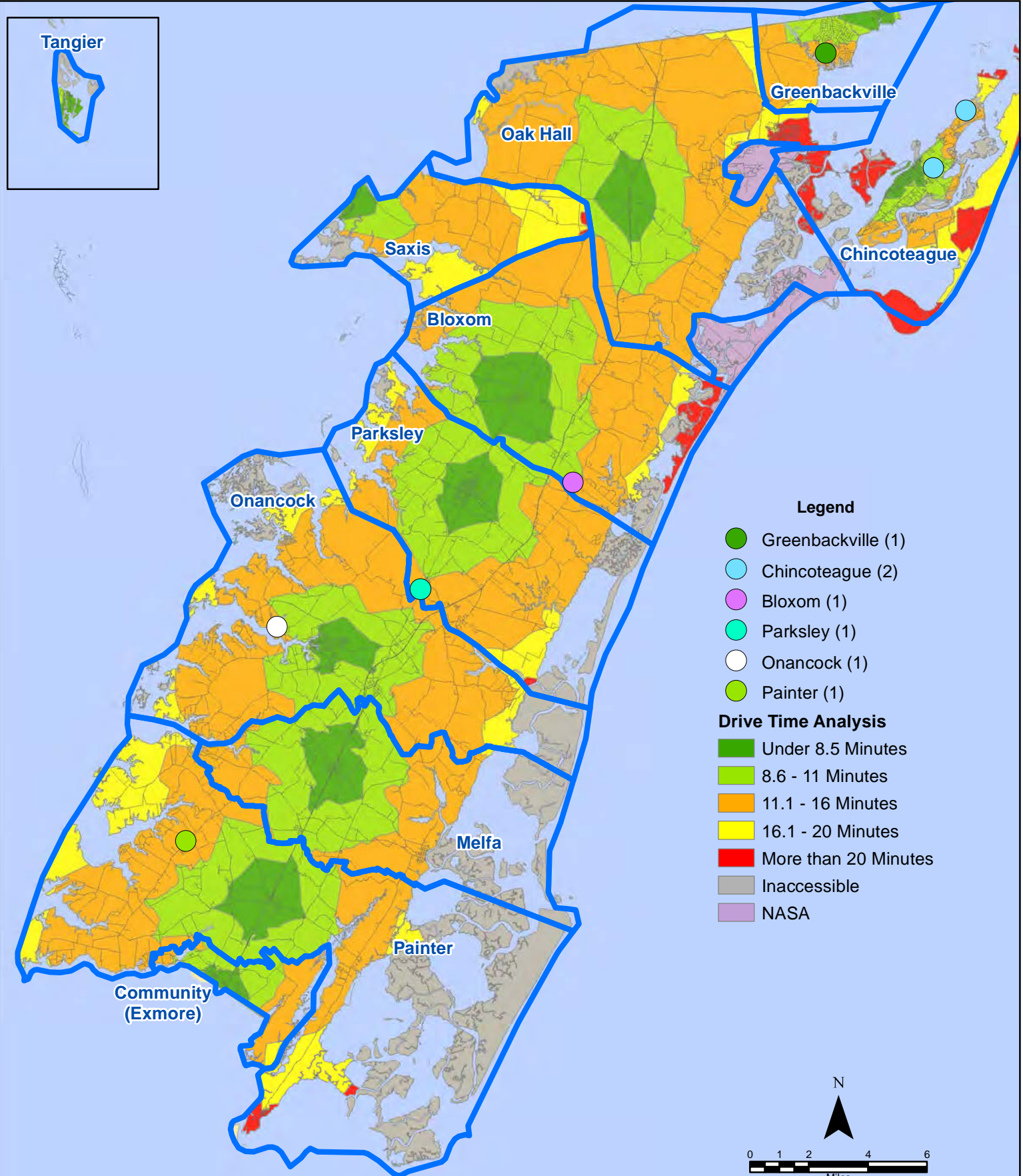
June 2019 EMS Calls With Response Time Greater Than 20 Mins.



All points are plotted using X and Y coordinates provided by the ESVA 911 Center. Points may be plotted over one another when they are in close proximity.

Map Prepared by the Accomack County Department of Building, Planning & Economic Development using data from the ESVA 911 Center - July 3, 2019

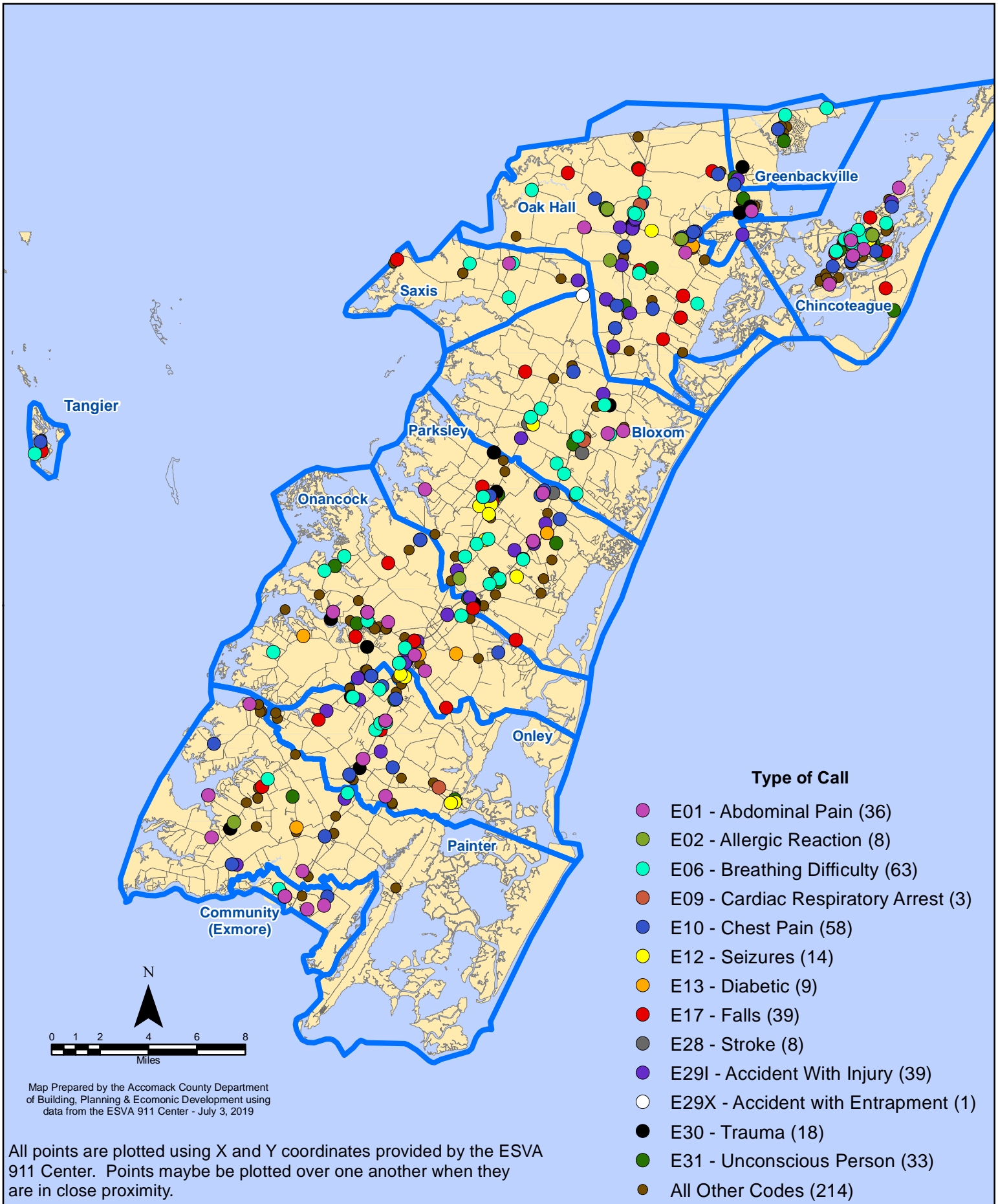
June 2019 EMS Calls With Response Time Greater Than 20 Mins.



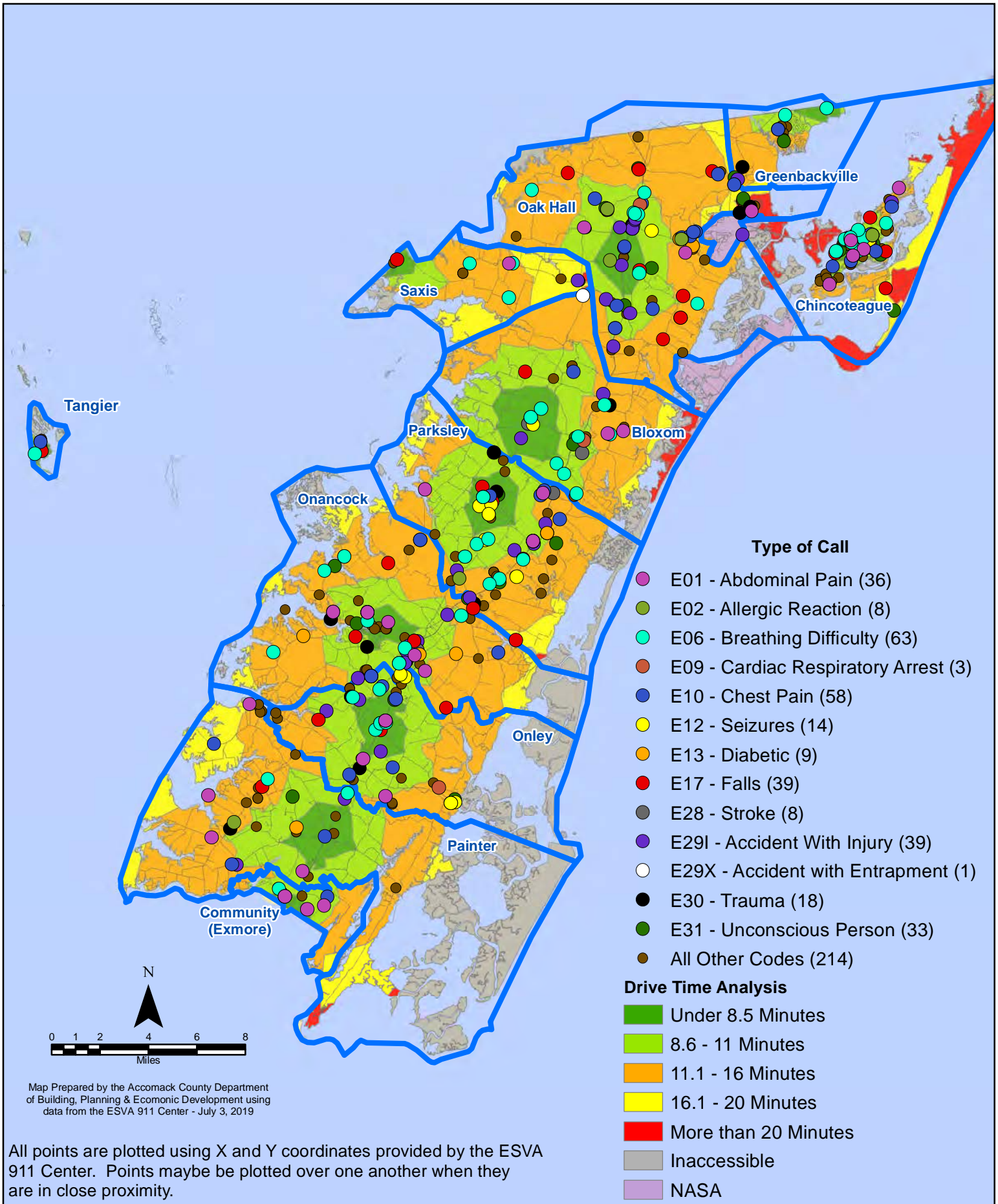
All points are plotted using X and Y coordinates provided by the ESVA 911 Center. Points may be plotted over one another when they are in close proximity.

Map Prepared by the Accomack County Department of Building, Planning & Economic Development using data from the ESVA 911 Center - July 3, 2019

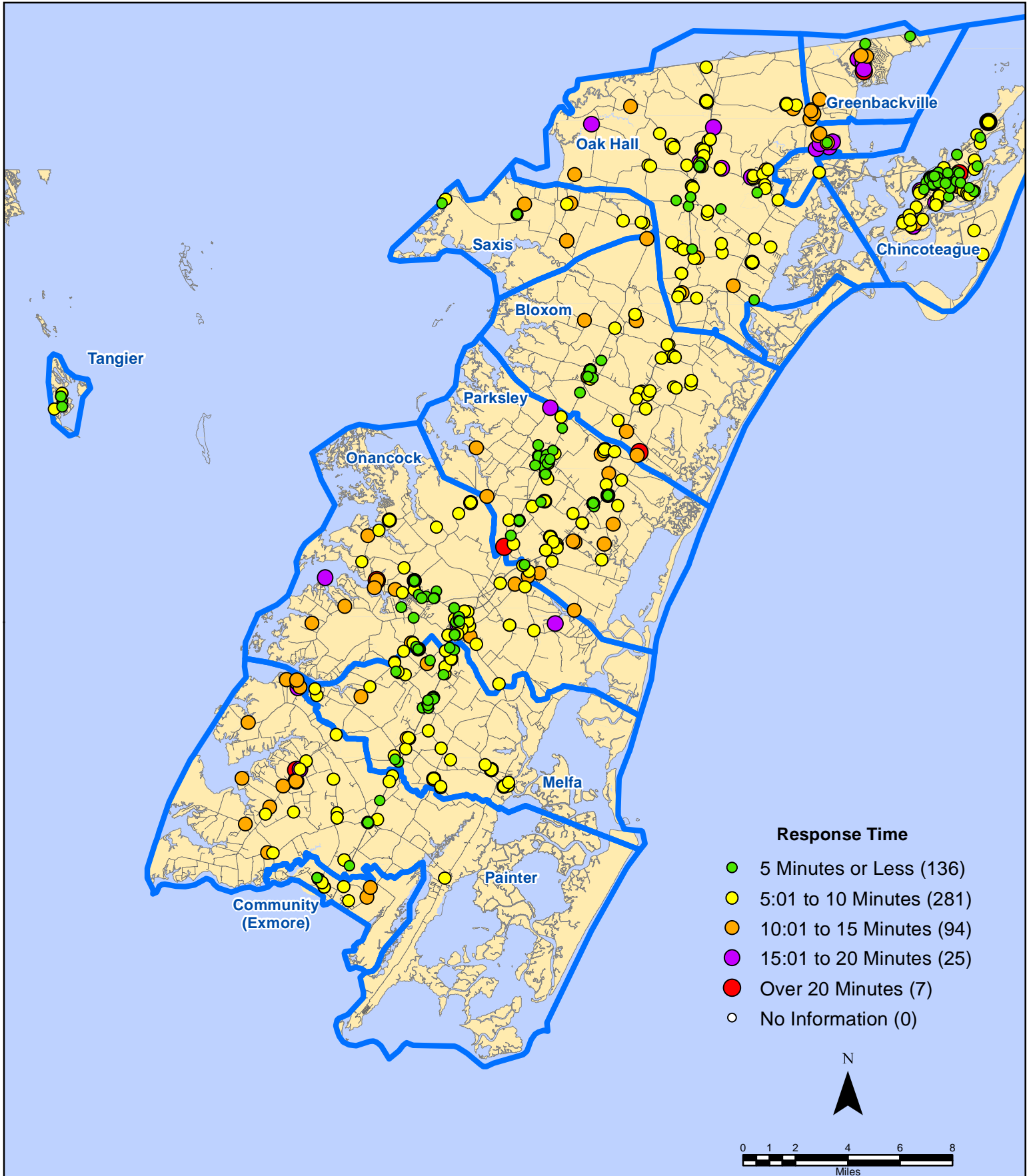
June 2019 EMS Calls By Type



June 2019 EMS Calls By Type



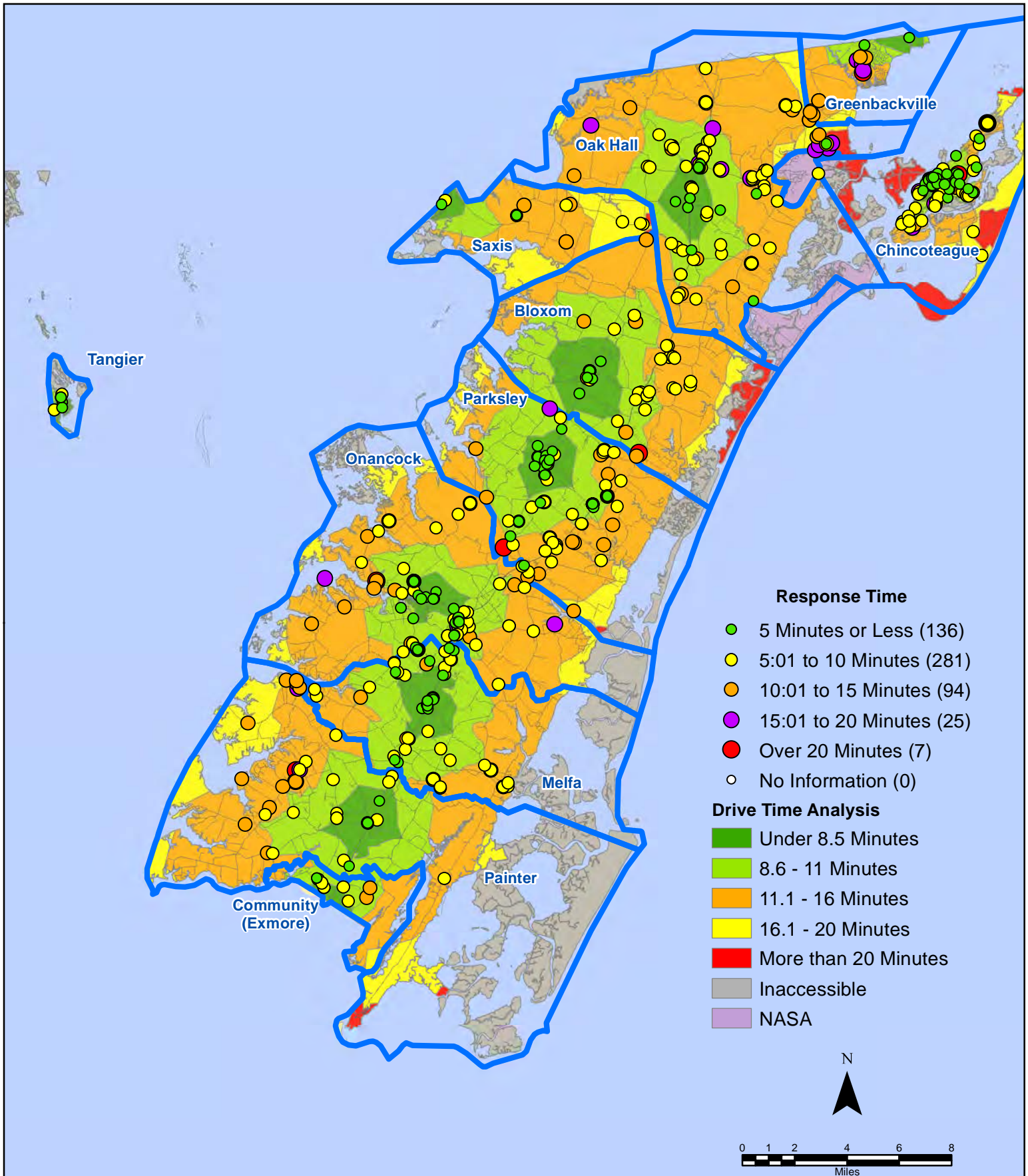
June 2019 EMS Calls By Response Time



All points are plotted using X and Y coordinates provided by the ESVA 911 Center.
Points may be plotted over one another when they are in close proximity.

Map Prepared by the Accomack County Department of Building, Planning & Economic Development using data from the ESVA 911 Center - July 3, 2019

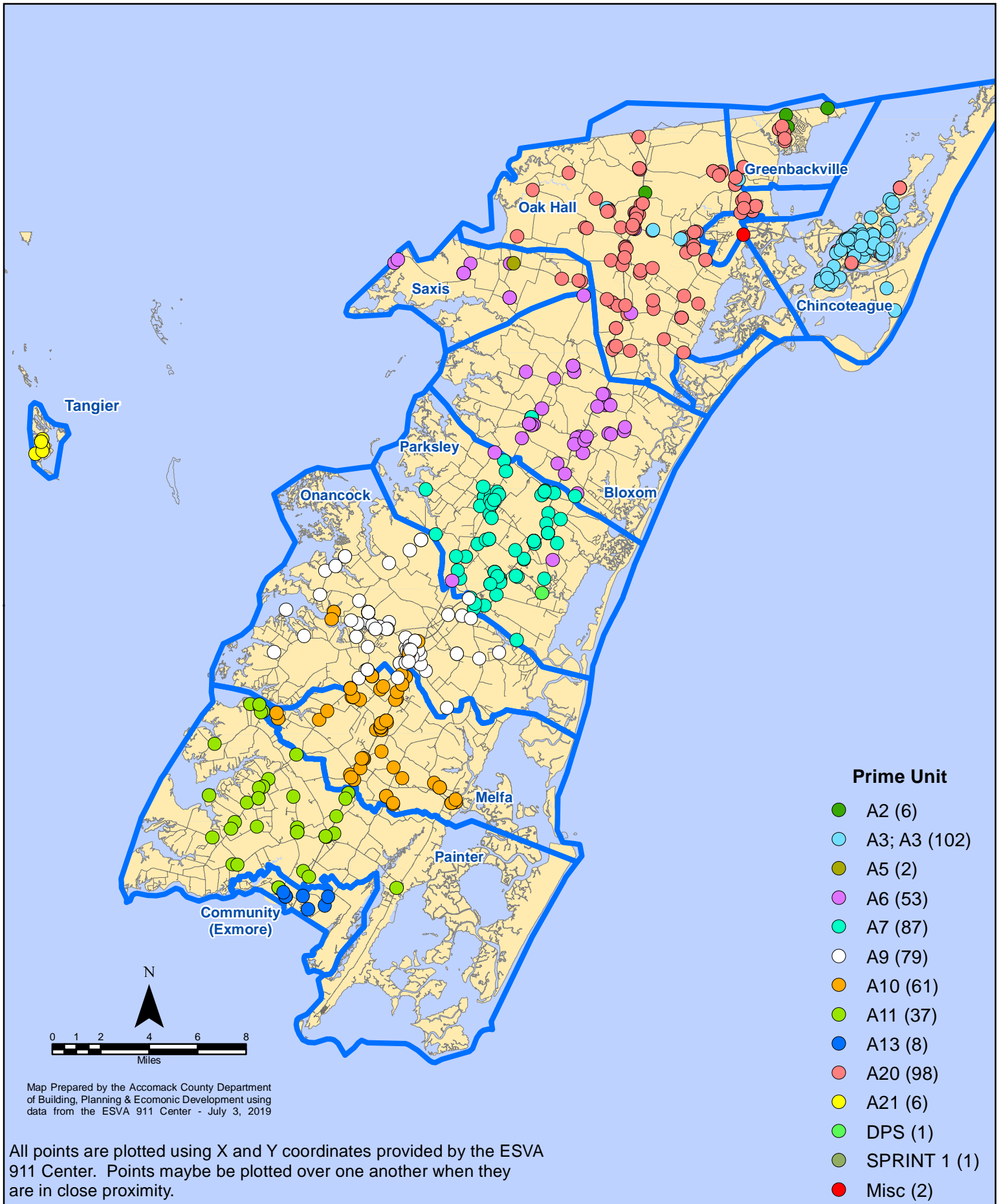
June 2019 EMS Calls By Response Time



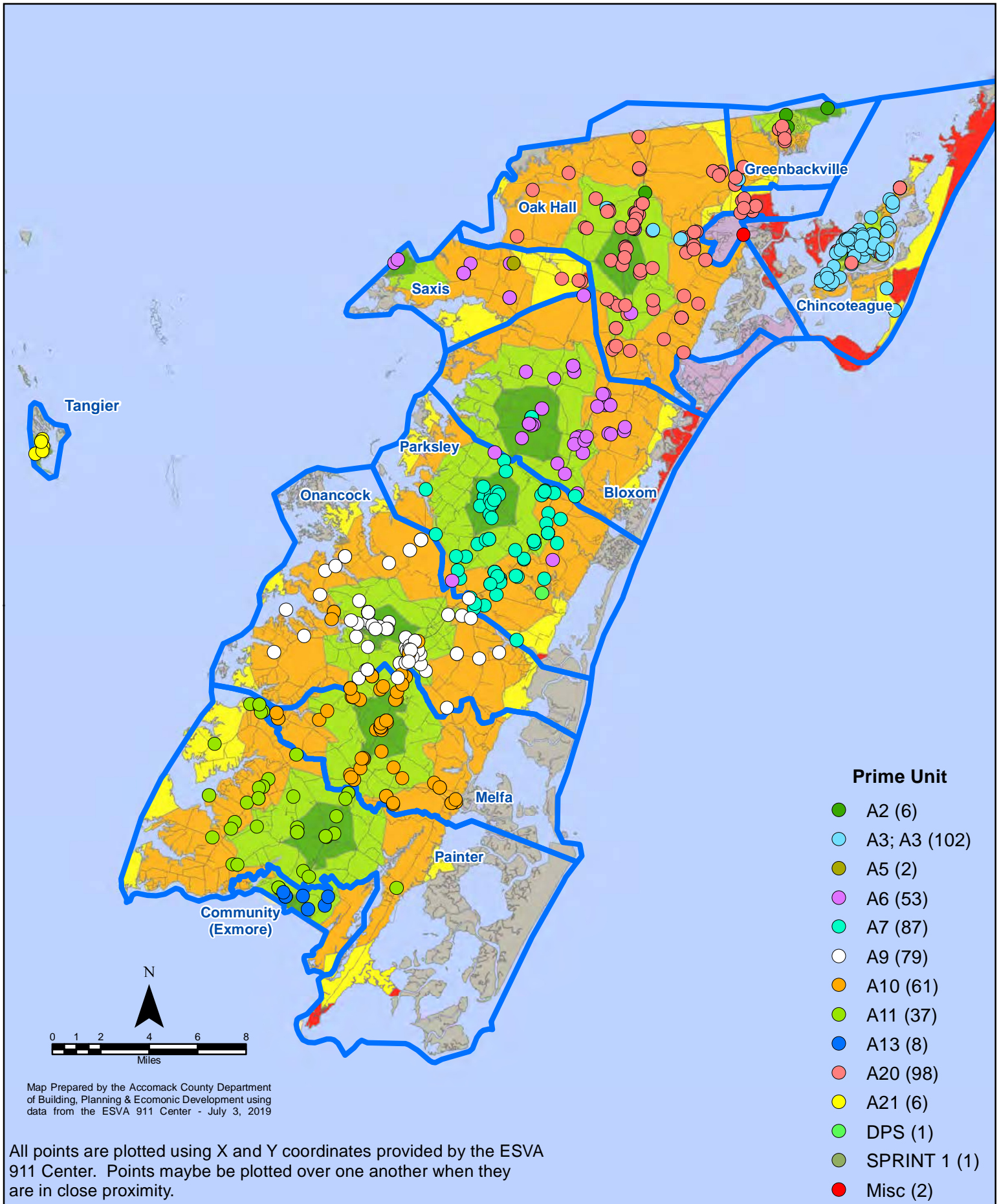
All points are plotted using X and Y coordinates provided by the ESVA 911 Center. Points may be plotted over one another when they are in close proximity.

Map Prepared by the Accomack County Department of Building, Planning & Economic Development using data from the ESVA 911 Center - July 3, 2019

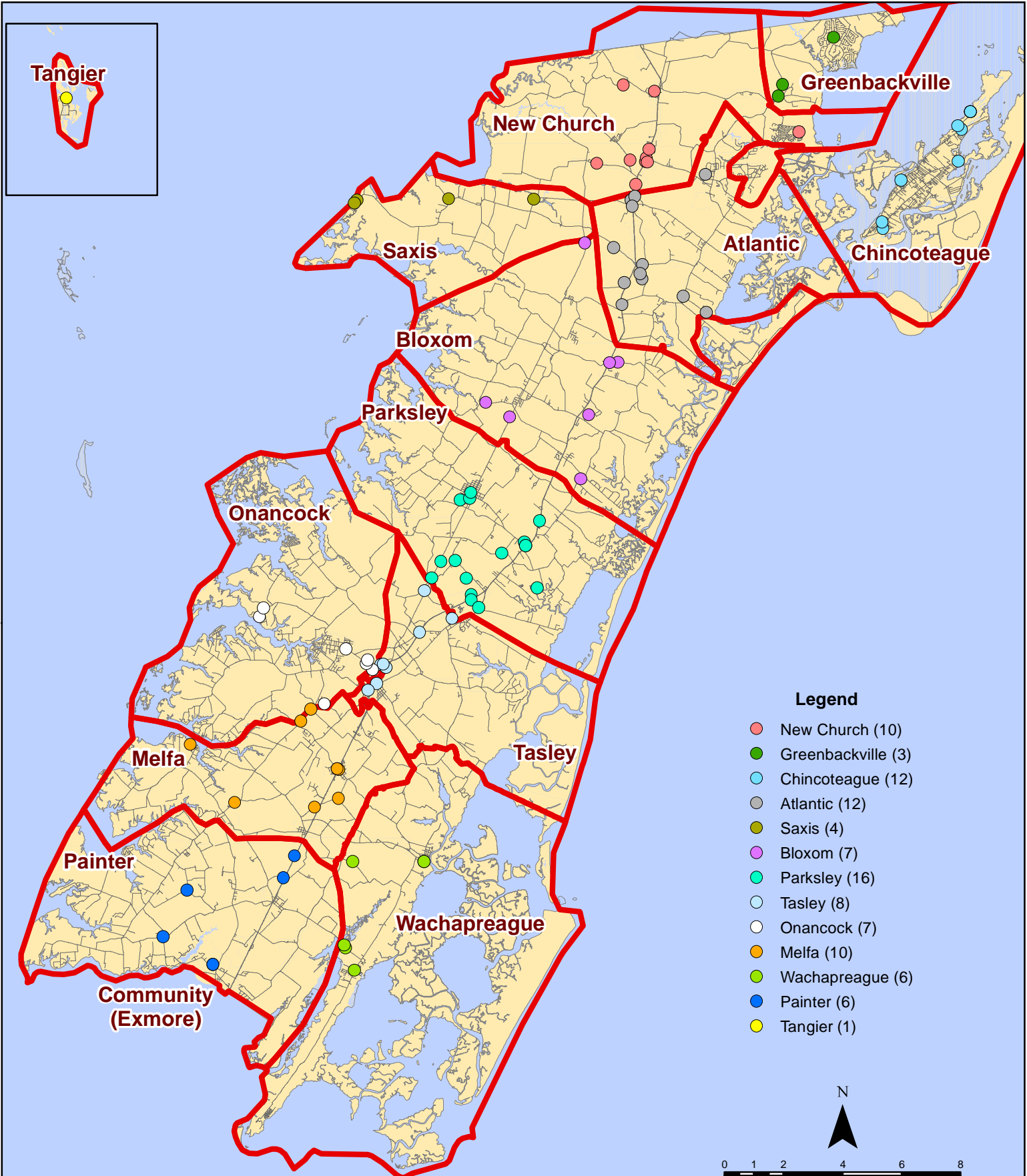
June 2019 EMS Calls By Prime Unit



June 2019 EMS Calls By Prime Unit



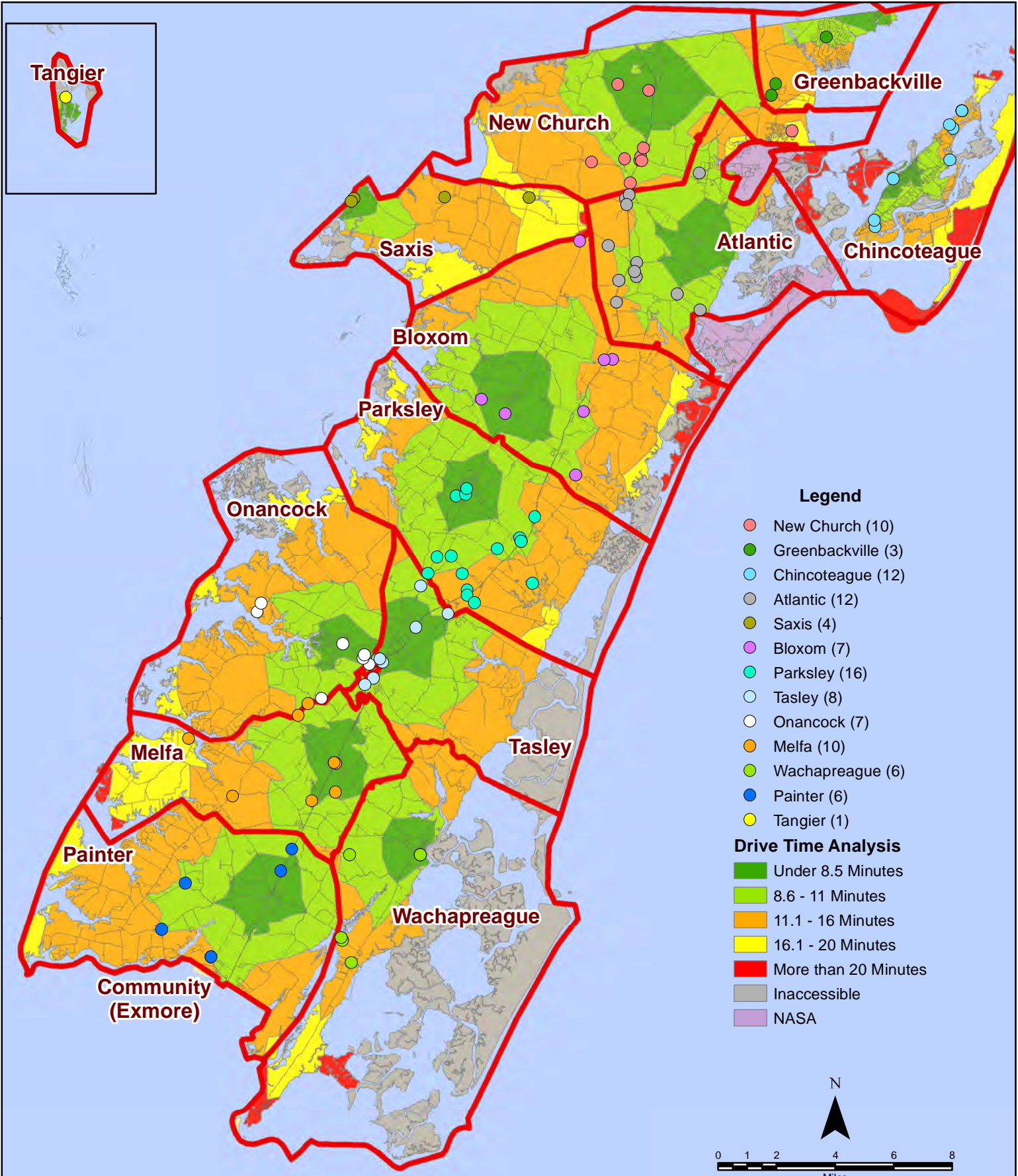
June 2019 Fire Calls By District



All points are plotted using X and Y coordinates provided by the ESVA 911 Center. Points may be plotted over one another when they are in close proximity.

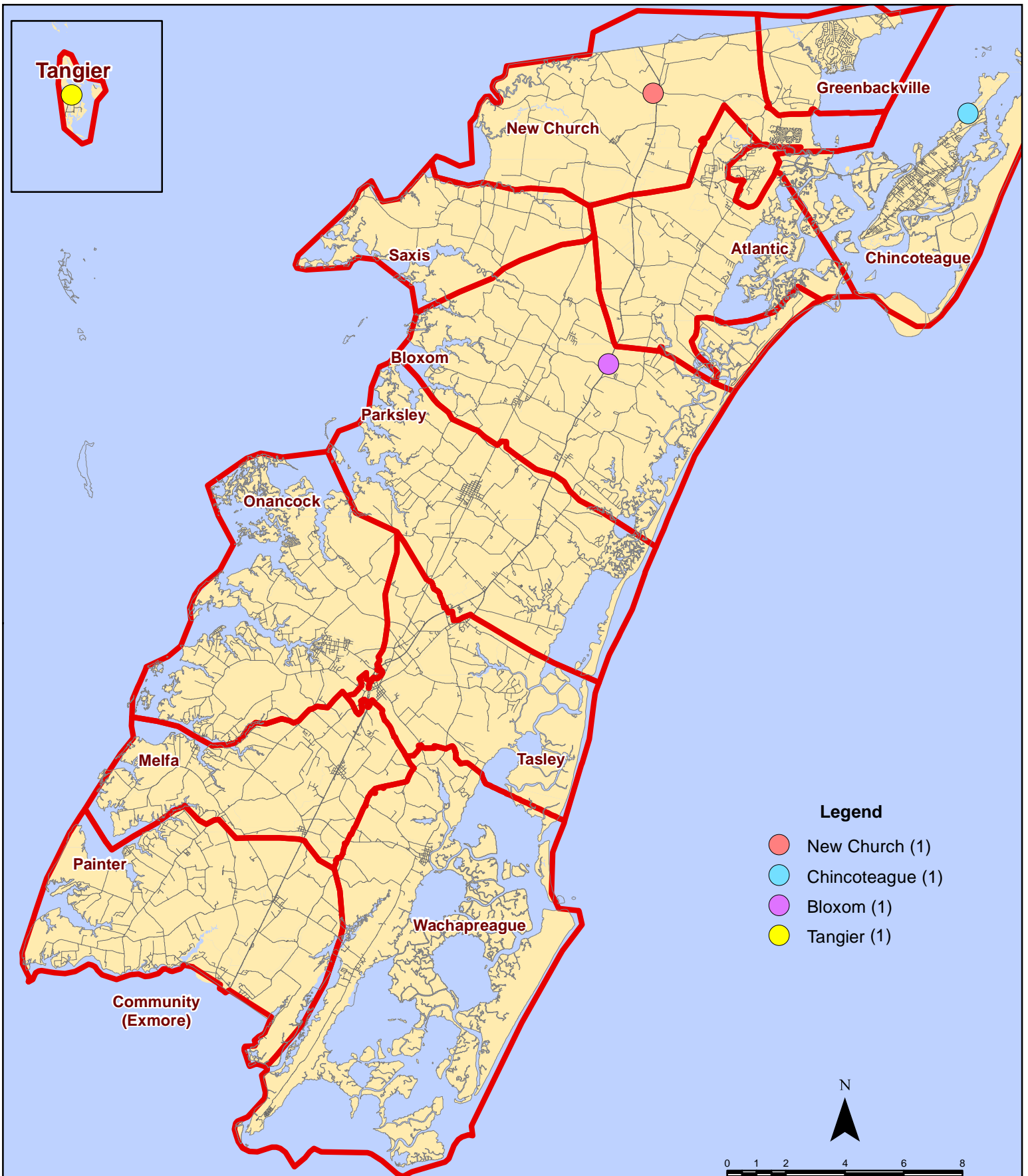
Map Prepared by the Accomack County Department of Building, Planning & Economic Development using data from the ESVA 911 Center - July 3, 2019

June 2019 Fire Calls By District



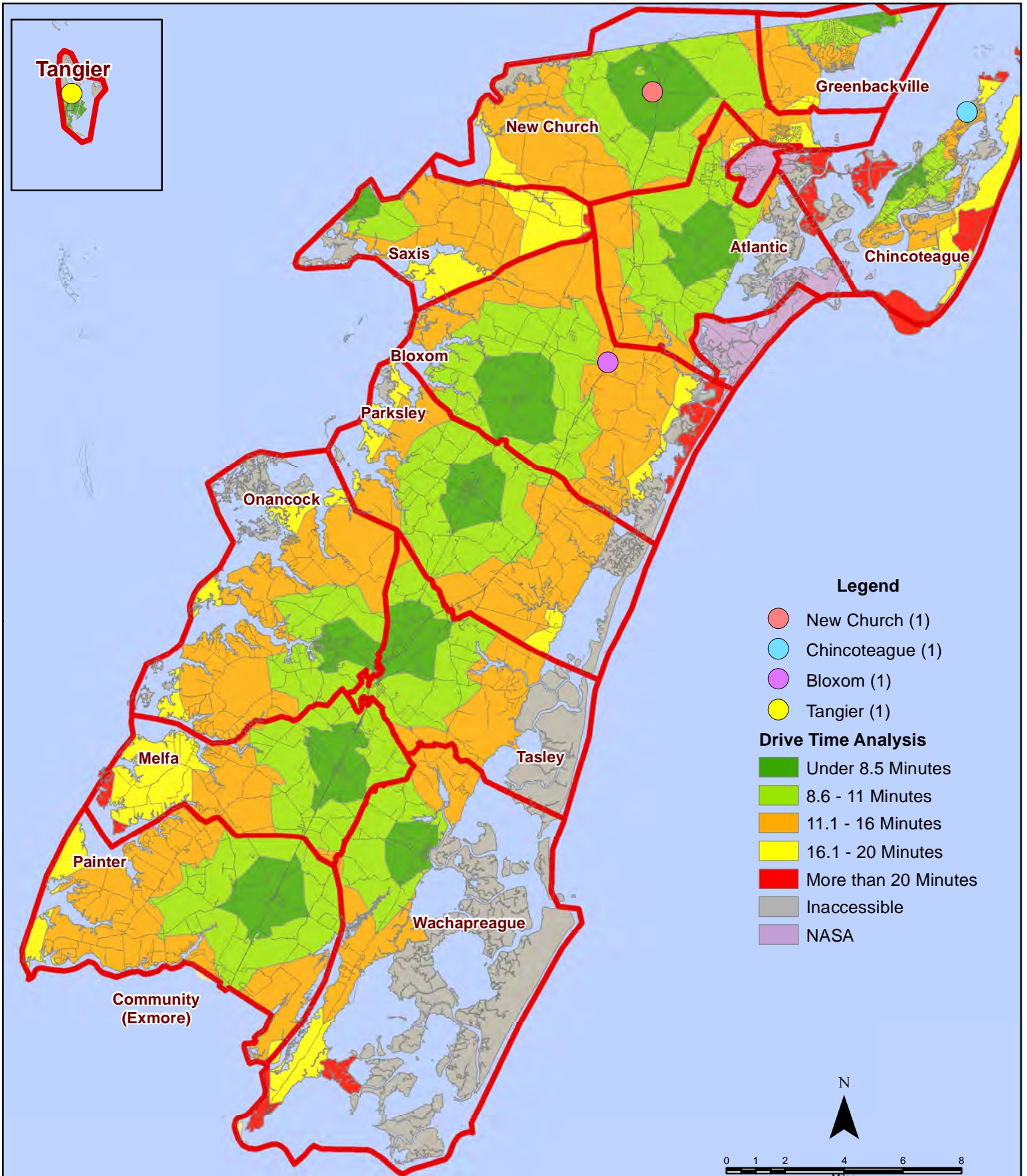
All points are plotted using X and Y coordinates provided by the ESVA 911 Center. Points may be plotted over one another when they are in close proximity.

June 2019 Fire Calls With Response Time Greater Than 20 Mins.



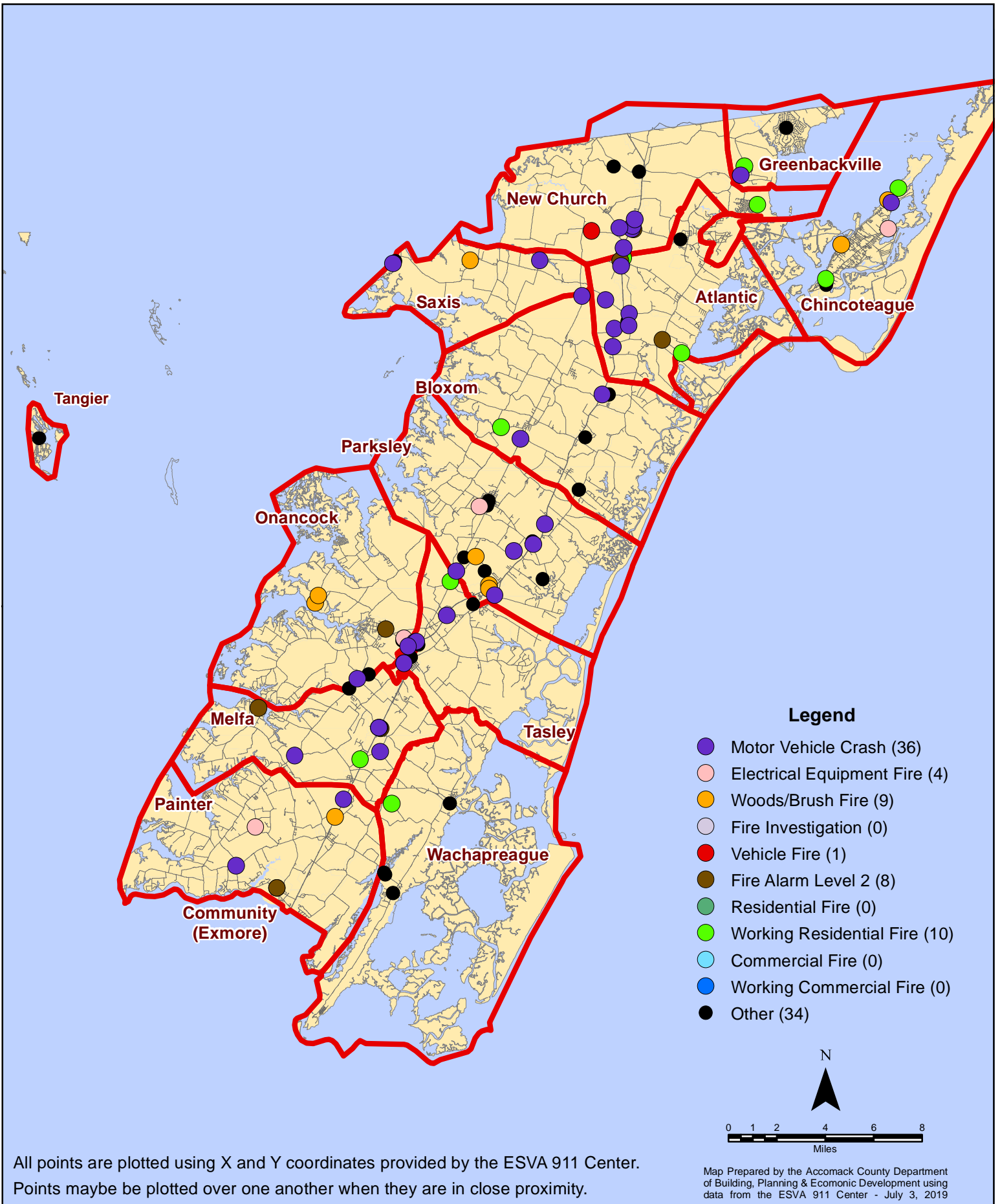
All points are plotted using X and Y coordinates provided by the ESVA 911 Center. Points may be plotted over one another when they are in close proximity.

June 2019 Fire Calls With Response Time Greater Than 20 Mins.

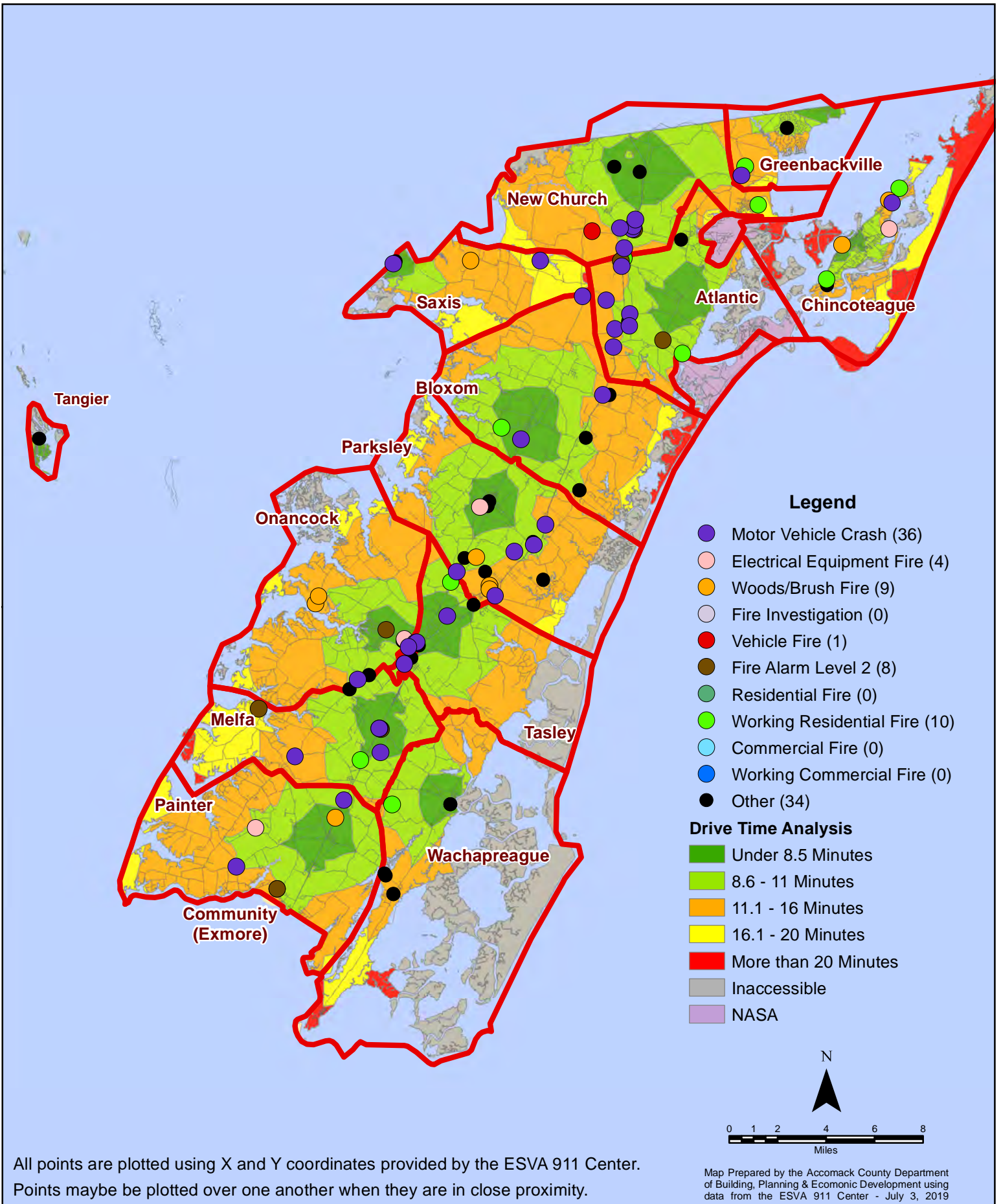


All points are plotted using X and Y coordinates provided by the ESVA 911 Center. Points may be plotted over one another when they are in close proximity.

June 2019 Fire Calls By Type

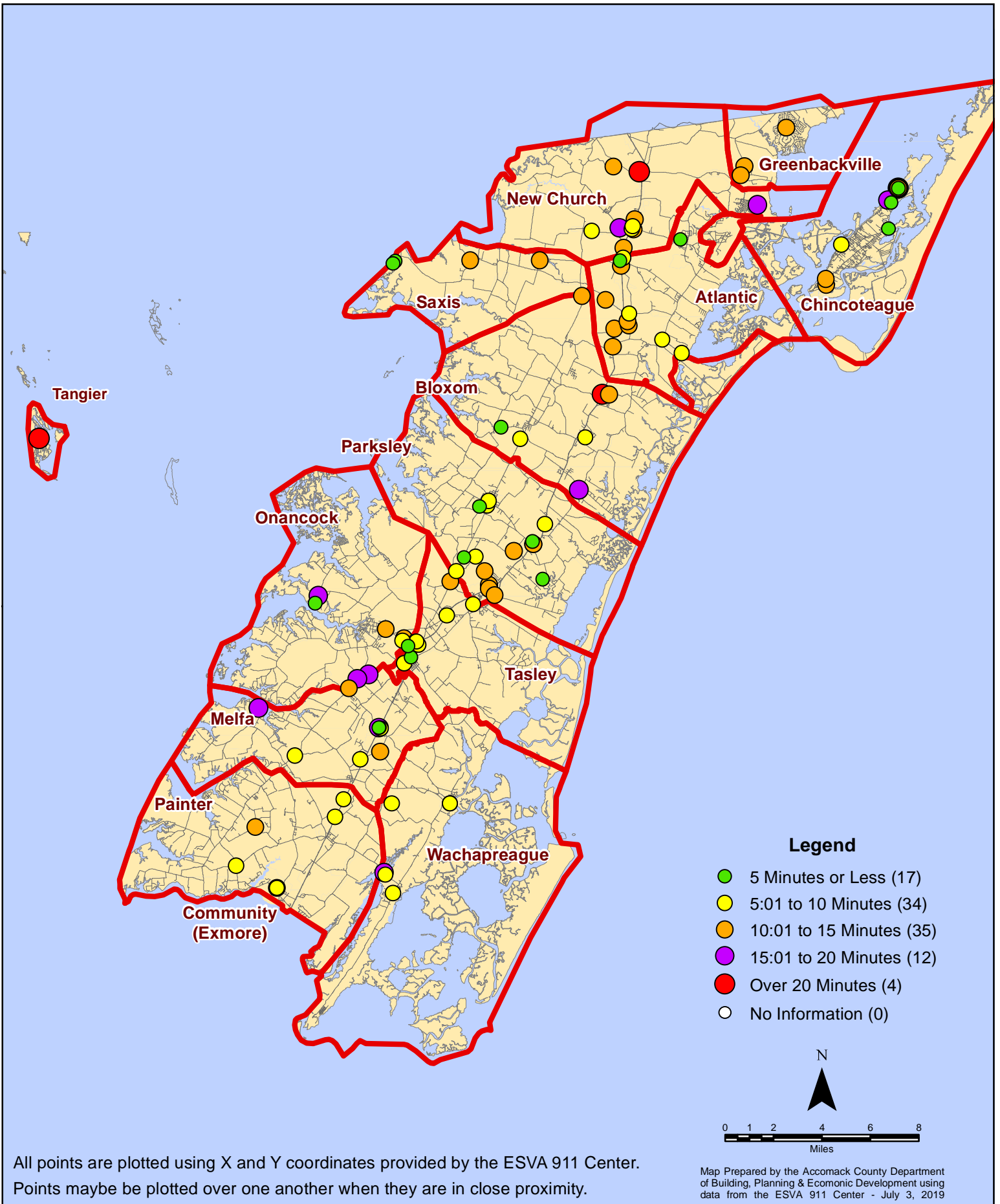


June 2019 Fire Calls By Type



All points are plotted using X and Y coordinates provided by the ESVA 911 Center. Points may be plotted over one another when they are in close proximity.

June 2019 Fire Calls By Response Time



June 2019 Fire Calls By Response Time

