

December 2018

Fire - Performance Measure Data *					
Response District	Total Calls in District	Greater than 20 min. Response Time	Calls Handled by other agency	Longest Response Time	Overall Station Benchmark %
New Church	11	0	0	0:16:04	100.0%
Greenbackville	1	0	0	0:03:02	100.0%
Chincoteague	4	0	0	0:11:09	100.0%
Atlantic	4	0	0	0:11:02	100.0%
Saxis	2	0	0	0:08:50	100.0%
Bloxom	11	1	0	0:33:03	90.9%
Parksley	11	0	0	0:14:15	100.0%
Tasley	11	0	1	0:14:26	100.0%
Onancock	6	0	1	0:10:18	100.0%
Melfa	7	0	0	0:13:53	100.0%
Wachapreague	2	0	1	0:10:42	100.0%
Painter	5	0	0	0:15:02	100.0%
Tangier	0	0	0	0	#DIV/0!
System Totals	75	1	3	0:33:03	98.7%

EMS - Performance Measure Data						
Response District	Total Calls in District	Greater than 20 min. Response Time	Longest Response Time	Calls Handled by other agency	Station Benchmark Compliance %	Overall Station Reliability %
Greenbackville	18	2	0:20:52	7	88.9%	61.1%
Chincoteague	75	0	0:19:32	3	100.0%	96.0%
Saxis	10	0	0:15:01	3	100.0%	70.0%
Bloxom	35	0	0:19:27	2	100.0%	94.3%
Parksley	106	0	0:19:15	11	100.0%	89.6%
Onancock	88	0	0:15:52	2	100.0%	97.7%
Melfa	38	0	0:15:10	3	100.0%	92.1%
Wachapreague (Painter)	34	0	0:14:05	3	100.0%	91.2%
Oak Hall	95	1	0:36:08	7	98.9%	92.6%
Tangier	15	0	0:13:00	0	100.0%	100.0%
Community (Exmore)	11	0	0:09:58	0	100.0%	100.0%
System Totals	525	3	0:36:08	41	99.4%	92.2%

	Station Giving Aid														
	Greenbackville	Chincoteague	Saxis	Bloxom	Parksley	Onancock	Melfa	Wachapreague/Painter	Oak Hall	Community (Exmore)	Northampton	Wallops	NORS	2nd Call	3rd Call
Greenbackville									7					6	1
Chincoteague									3					3	
Saxis				1					2				3		
Bloxom					2								1	1	
Parksley				10		1							1	9	1
Onancock					1		1						1	1	
Melfa						1							2	1	
Wachapreague (Painter)							3						2	1	
Oak Hall	2			3	2								1	5	1
Community (Exmore)															
Northampton Co.															
Wallops															
Totals	2	0	0	14	5	2	4	2	12	0	0	0	17	22	2

Hospital Destination by Unit	Riverside - Shore Memorial		
	PRMC	Other	
Greenbackville	2	7	
Chincoteague	18	25	
Saxis	3	1	
Bloxom	19	1	
Parksley	66		
Onancock	56		
Melfa	25		
Wachapreague (Painter)	30		
Oak Hall	31	18	3
Wallops			
Totals	250	52	3

Benchmark = The Accomack County Board of Supervisors established a 20 minute standard for emergency response.

NORS = No Response by station or the call was handled by another station or agency.

2nd Call = 2nd ambulance call received while first ambulance was on another call.

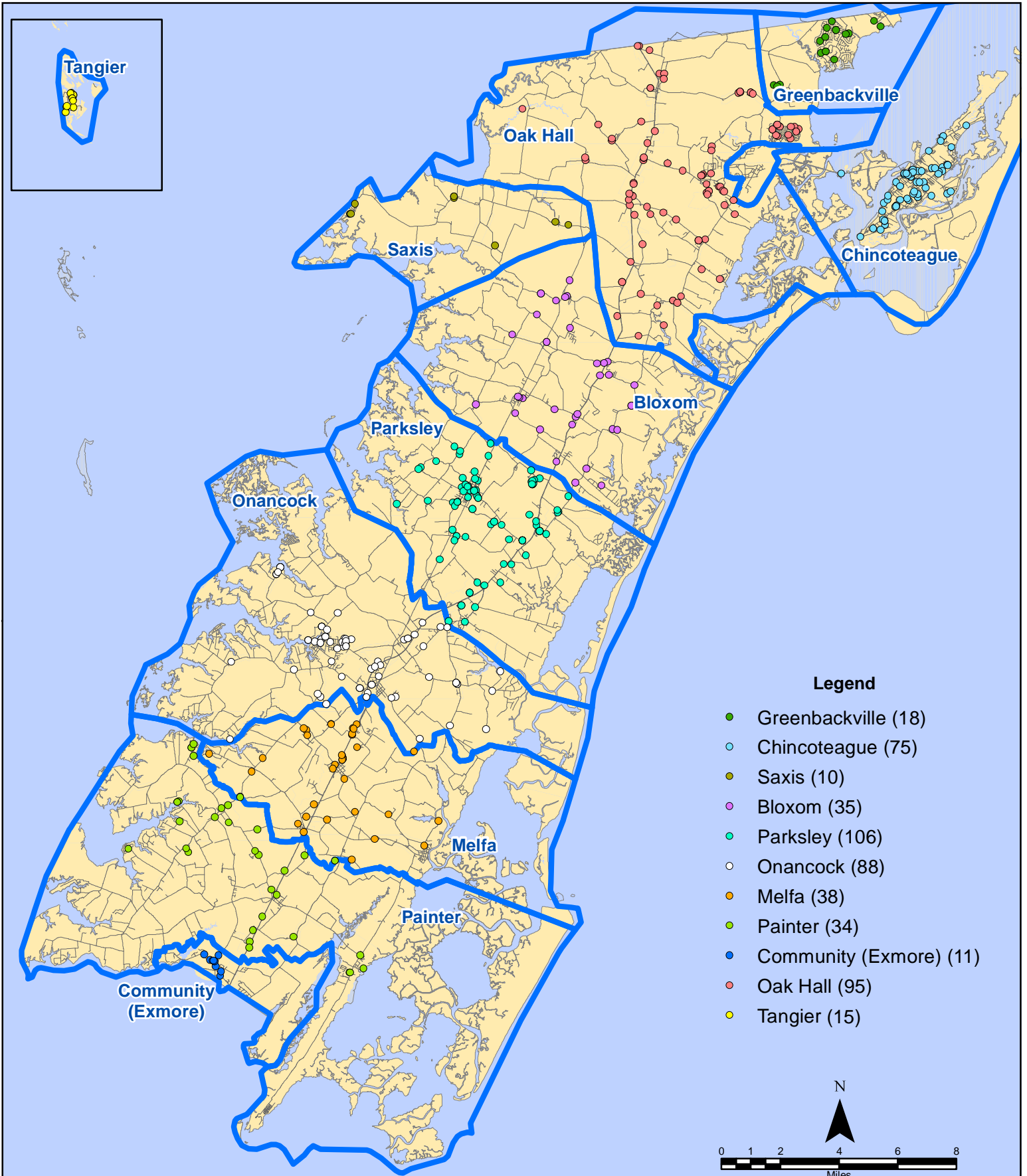
3rd Call = 3rd ambulance call received while first & second ambulances were on other calls.

* This data excludes F1 Med (Medical Assist) calls in the Fire Data.

This information was prepared using data supplied by the Eastern Shore of Virginia 911 Center. This information is original incident data only and may not be representative of all units and/or stations who responded to an incident.

Station Receiving Aid

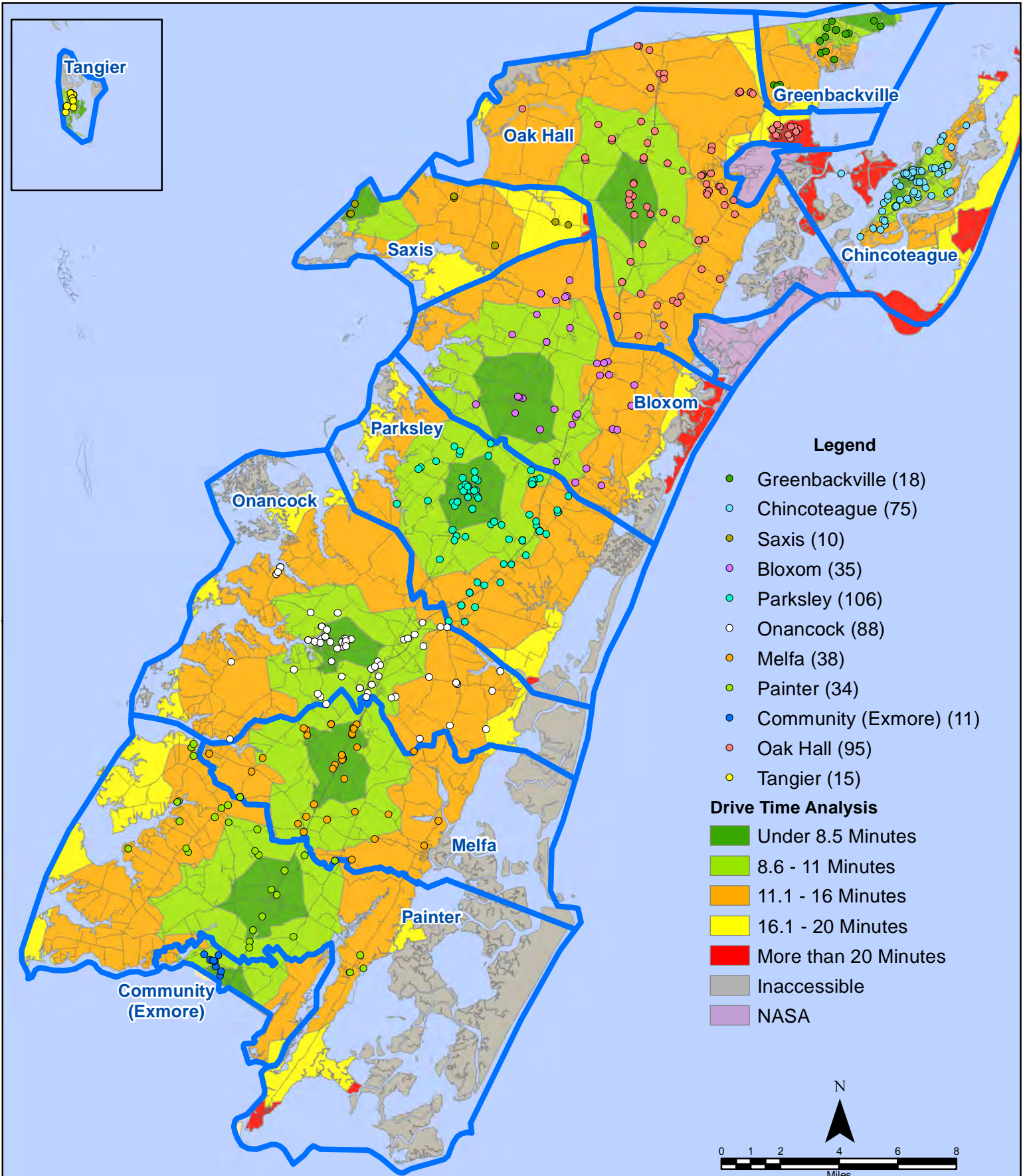
December 2018 EMS Calls By District



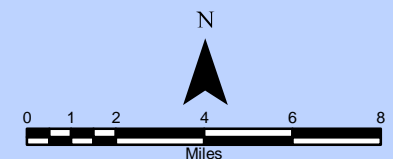
All points are plotted using X and Y coordinates provided by the ESVA 911 Center.
Points may be plotted over one another when they are in close proximity.

Map Prepared by the Accomack County Department of Building, Planning & Economic Development using data from the ESVA 911 Center - January 9, 2019

December 2018 EMS Calls By District

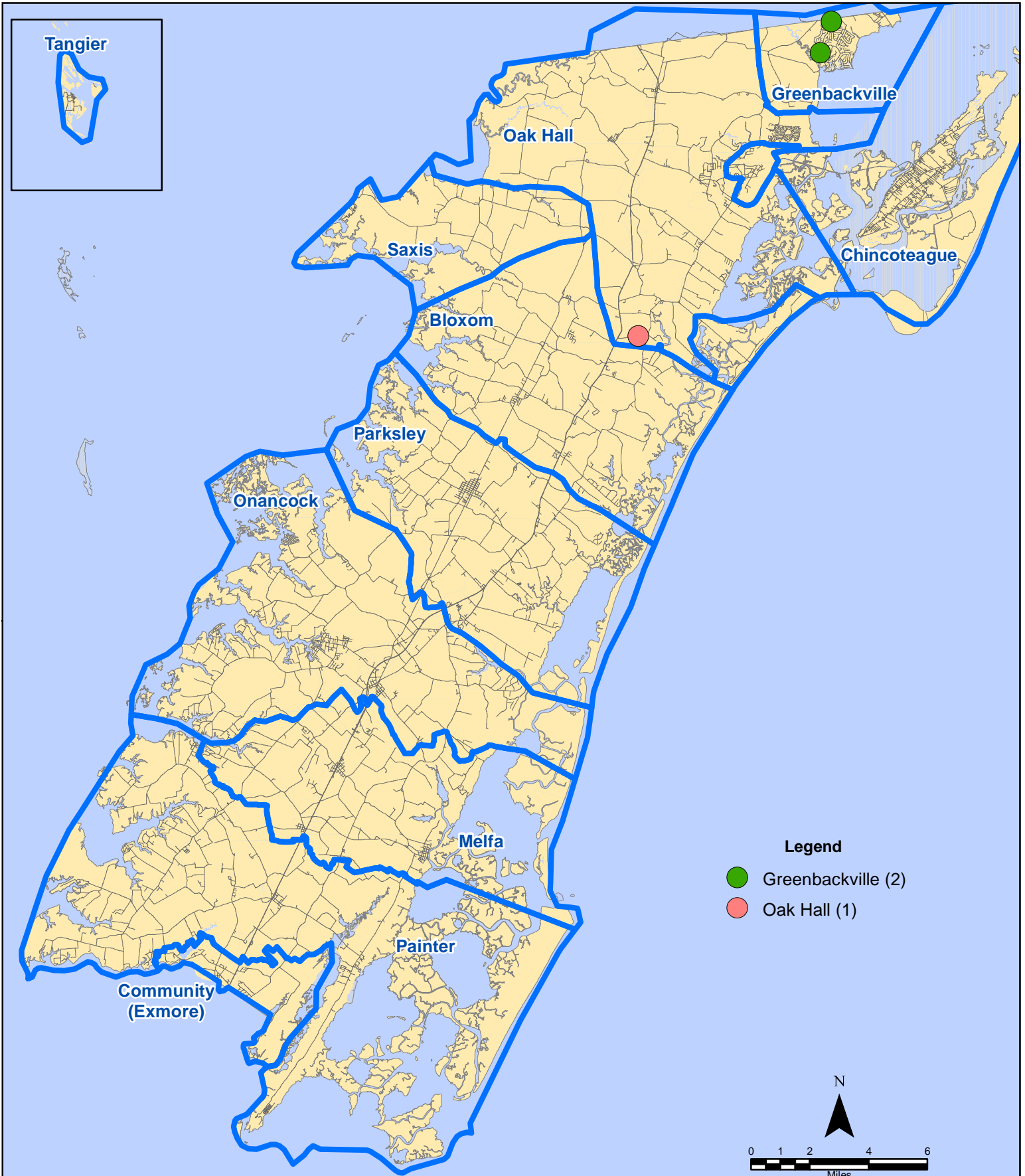


All points are plotted using X and Y coordinates provided by the ESVA 911 Center. Points may be plotted over one another when they are in close proximity.



Map Prepared by the Accomack County Department of Building, Planning & Economic Development using data from the ESVA 911 Center - January 9, 2019

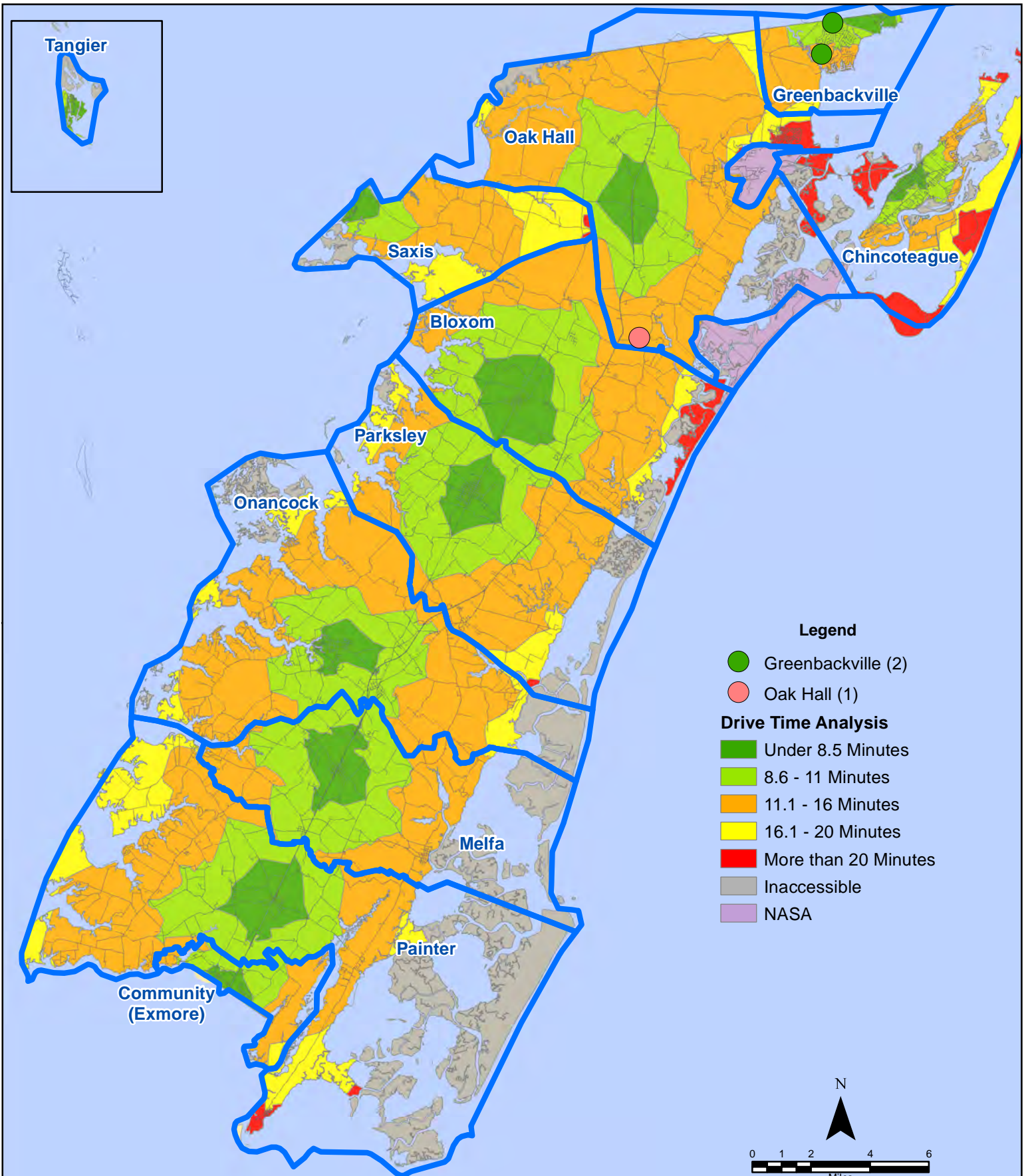
December 2018 EMS Calls With Response Time Greater Than 20 Mins.



All points are plotted using X and Y coordinates provided by the ESVA 911 Center. Points may be plotted over one another when they are in close proximity.

Map Prepared by the Accomack County Department of Building, Planning & Economic Development using data from the ESVA 911 Center - January 9, 2018

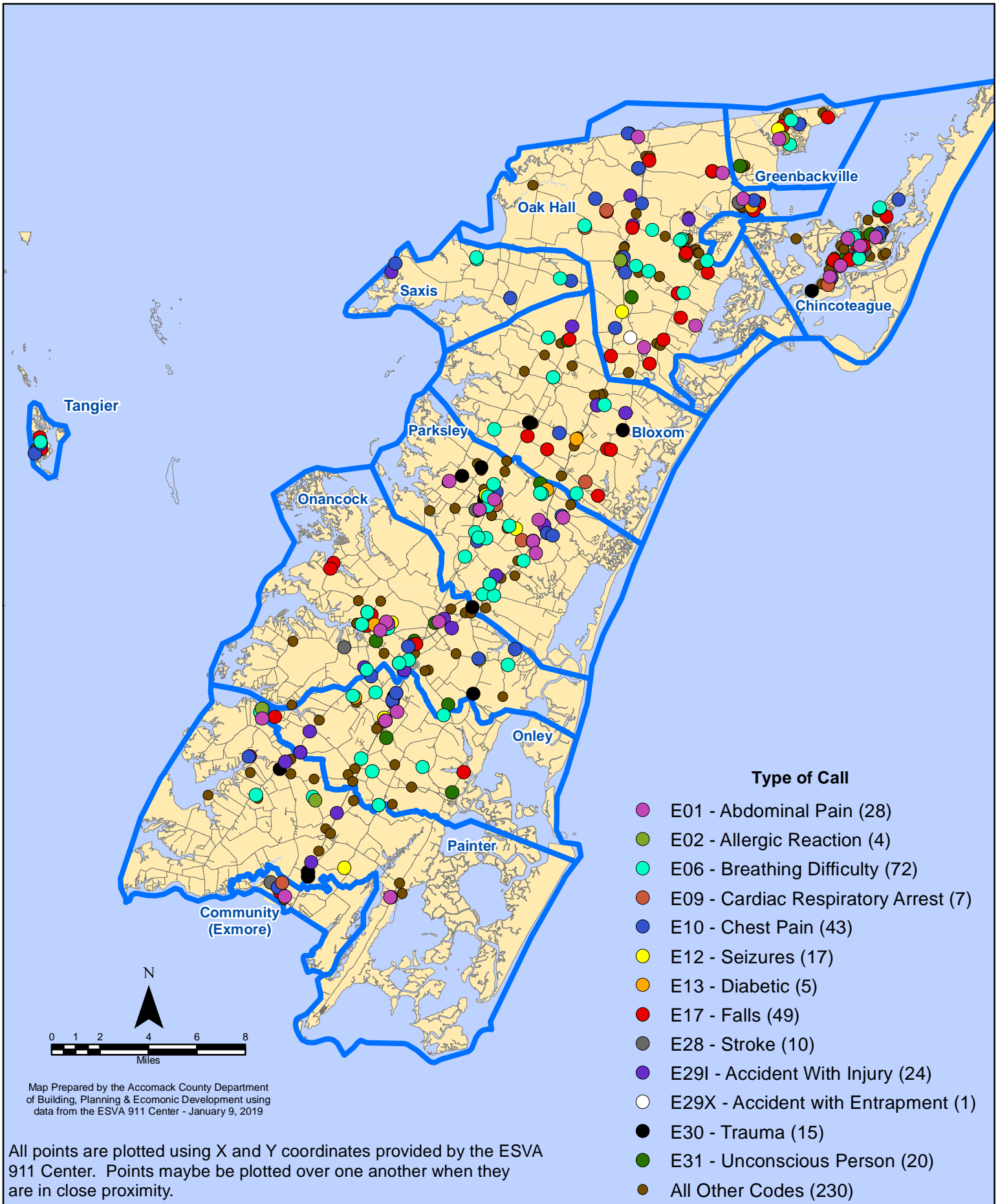
December 2018 EMS Calls With Response Time Greater Than 20 Mins.



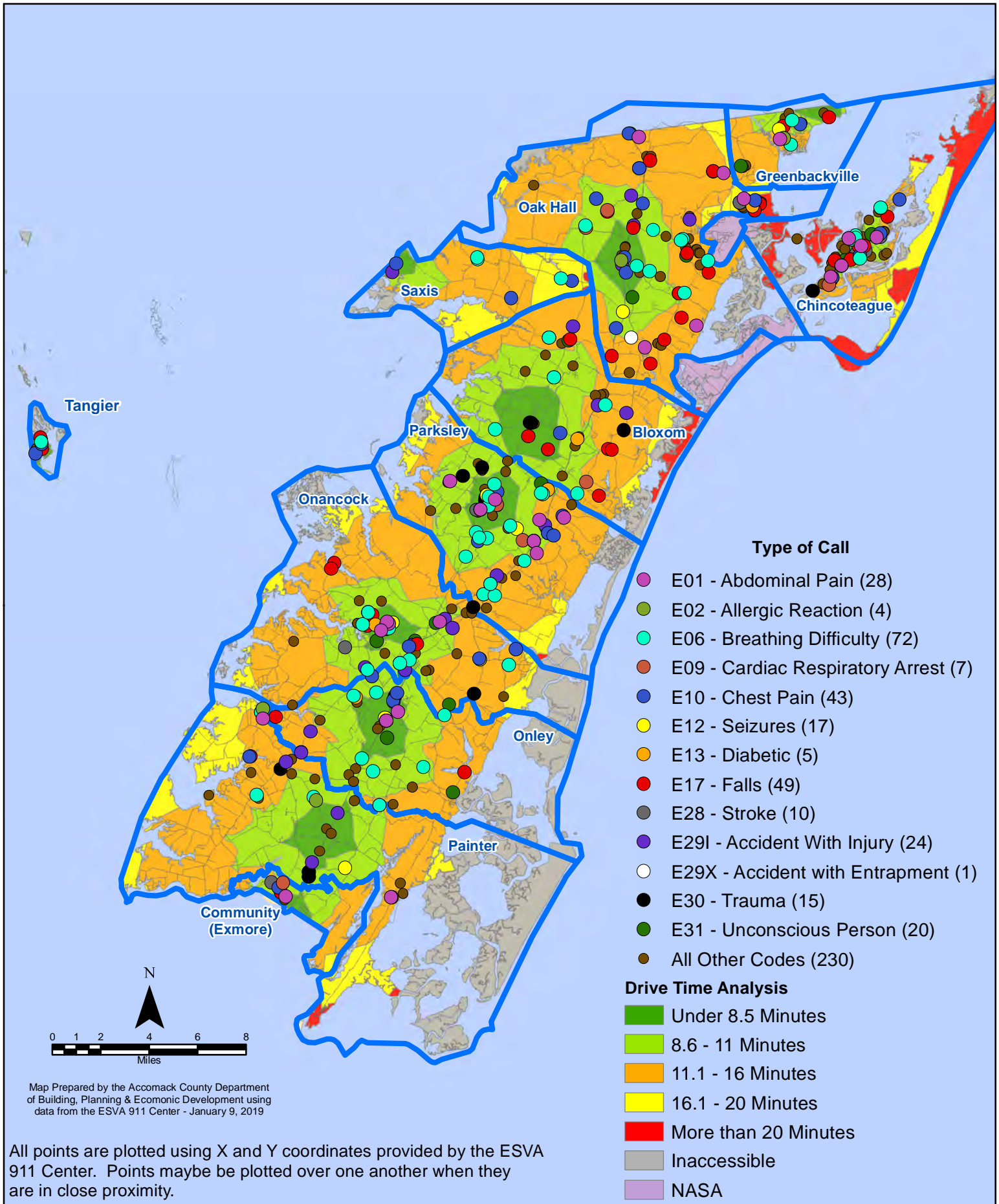
All points are plotted using X and Y coordinates provided by the ESVA 911 Center. Points may be plotted over one another when they are in close proximity.

Map Prepared by the Accomack County Department of Building, Planning & Economic Development using data from the ESVA 911 Center - January 9, 2018

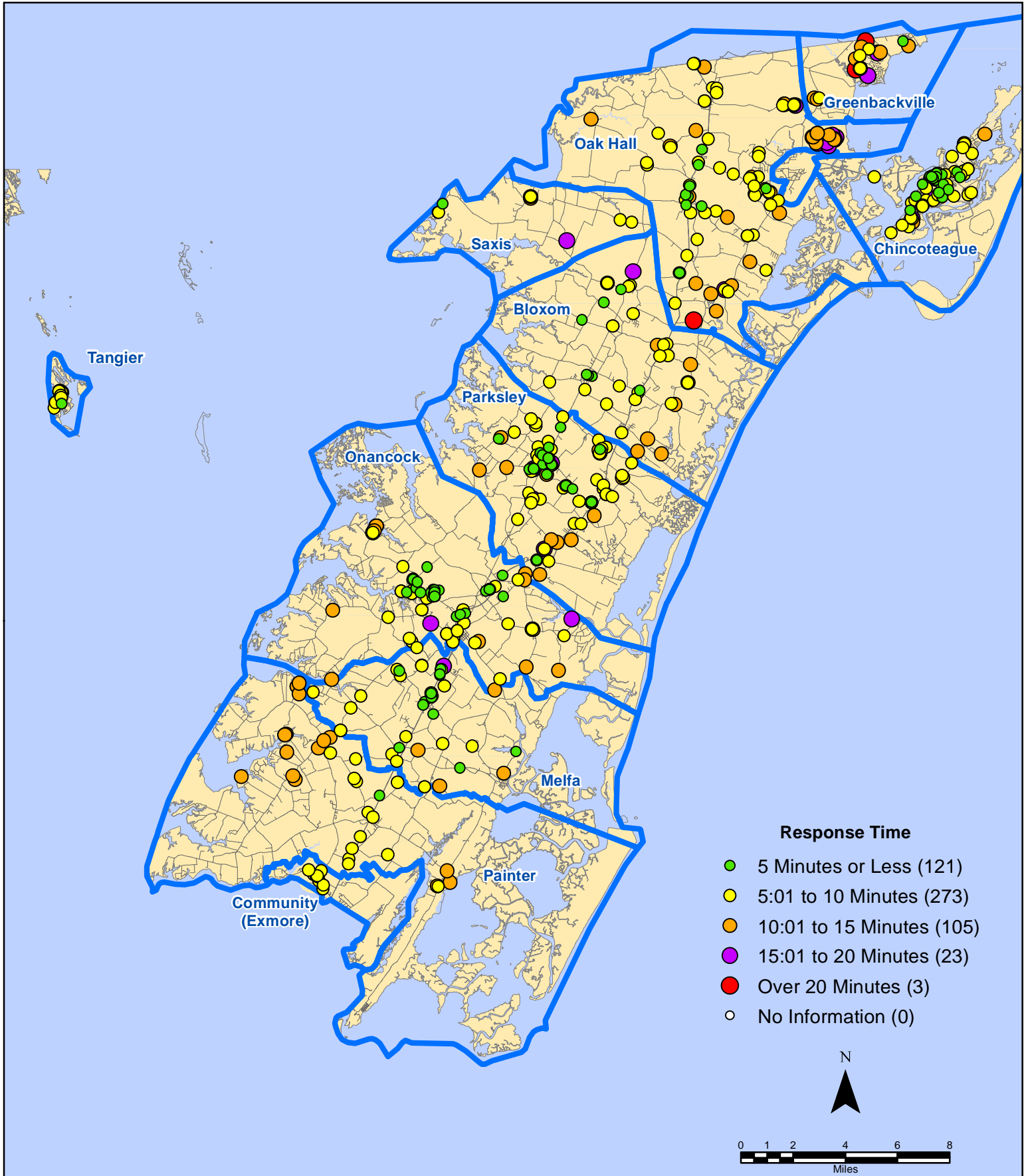
December 2018 EMS Calls By Type



December 2018 EMS Calls By Type



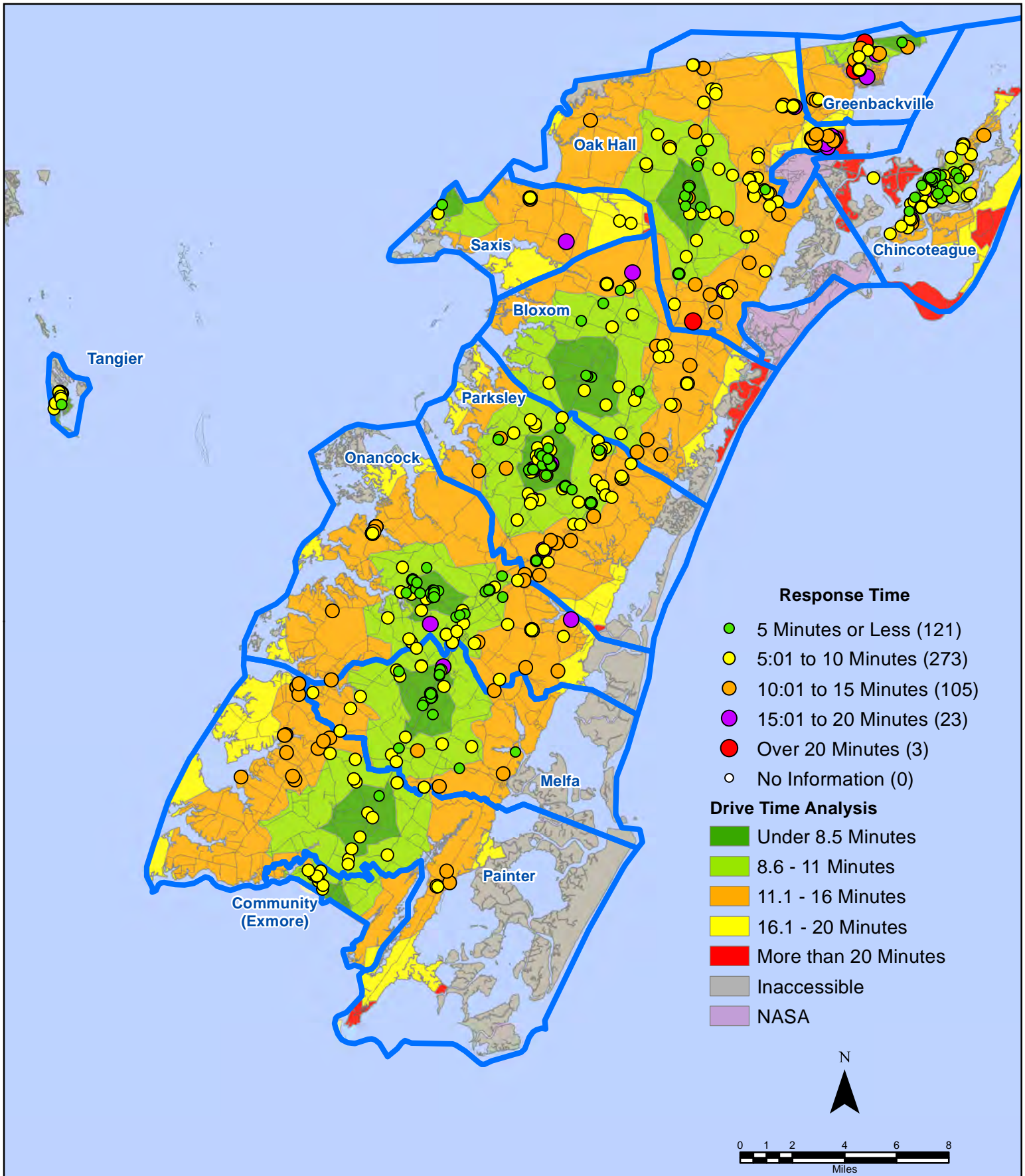
December 2018 EMS Calls By Response Time



All points are plotted using X and Y coordinates provided by the ESVA 911 Center.
Points may be plotted over one another when they are in close proximity.

Map Prepared by the Accomack County Department of Building, Planning & Economic Development using data from the ESVA 911 Center - January 9, 2019

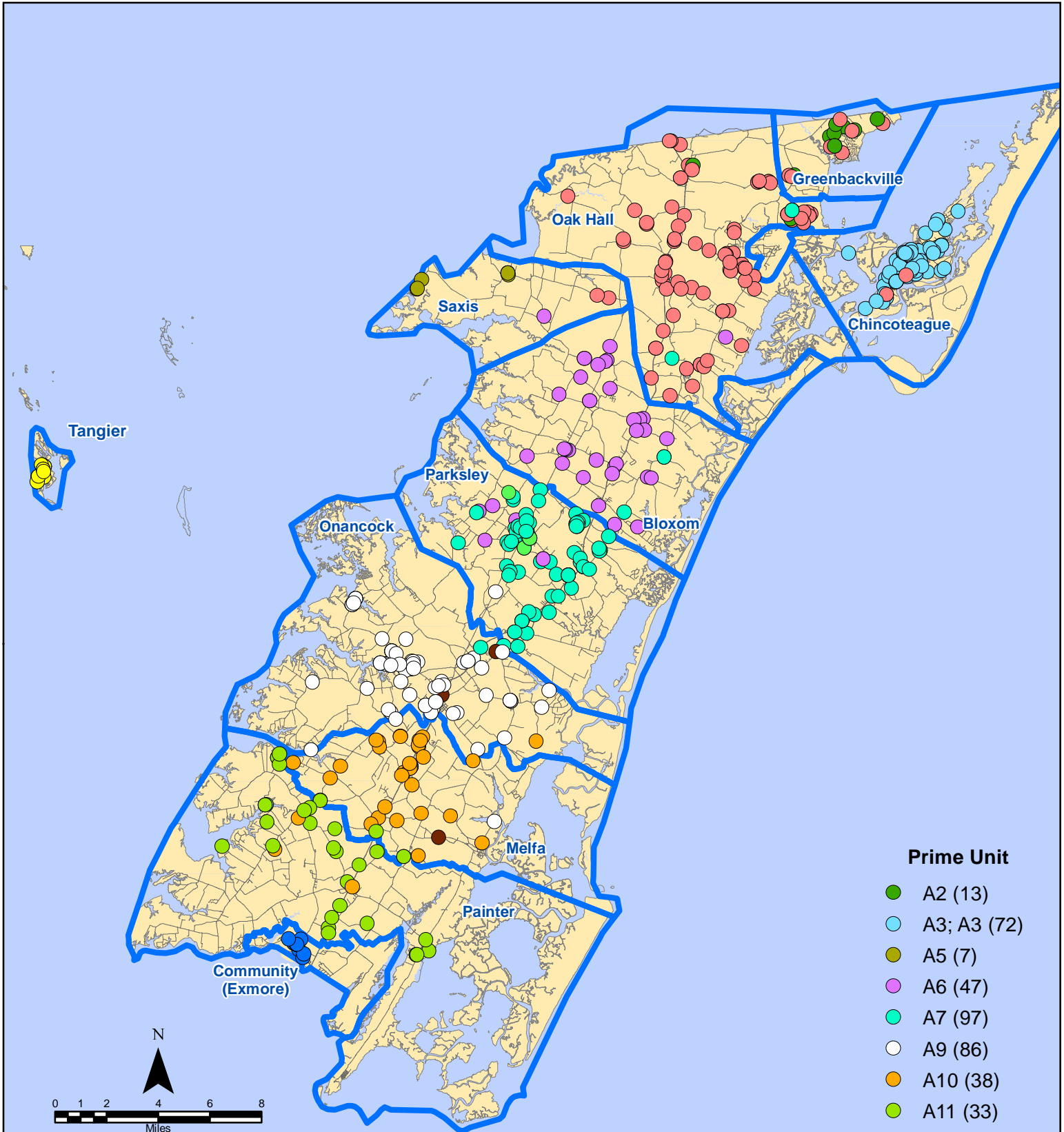
December 2018 EMS Calls By Response Time



All points are plotted using X and Y coordinates provided by the ESVA 911 Center. Points may be plotted over one another when they are in close proximity.

Map Prepared by the Accomack County Department of Building, Planning & Economic Development using data from the ESVA 911 Center - January 9, 2019

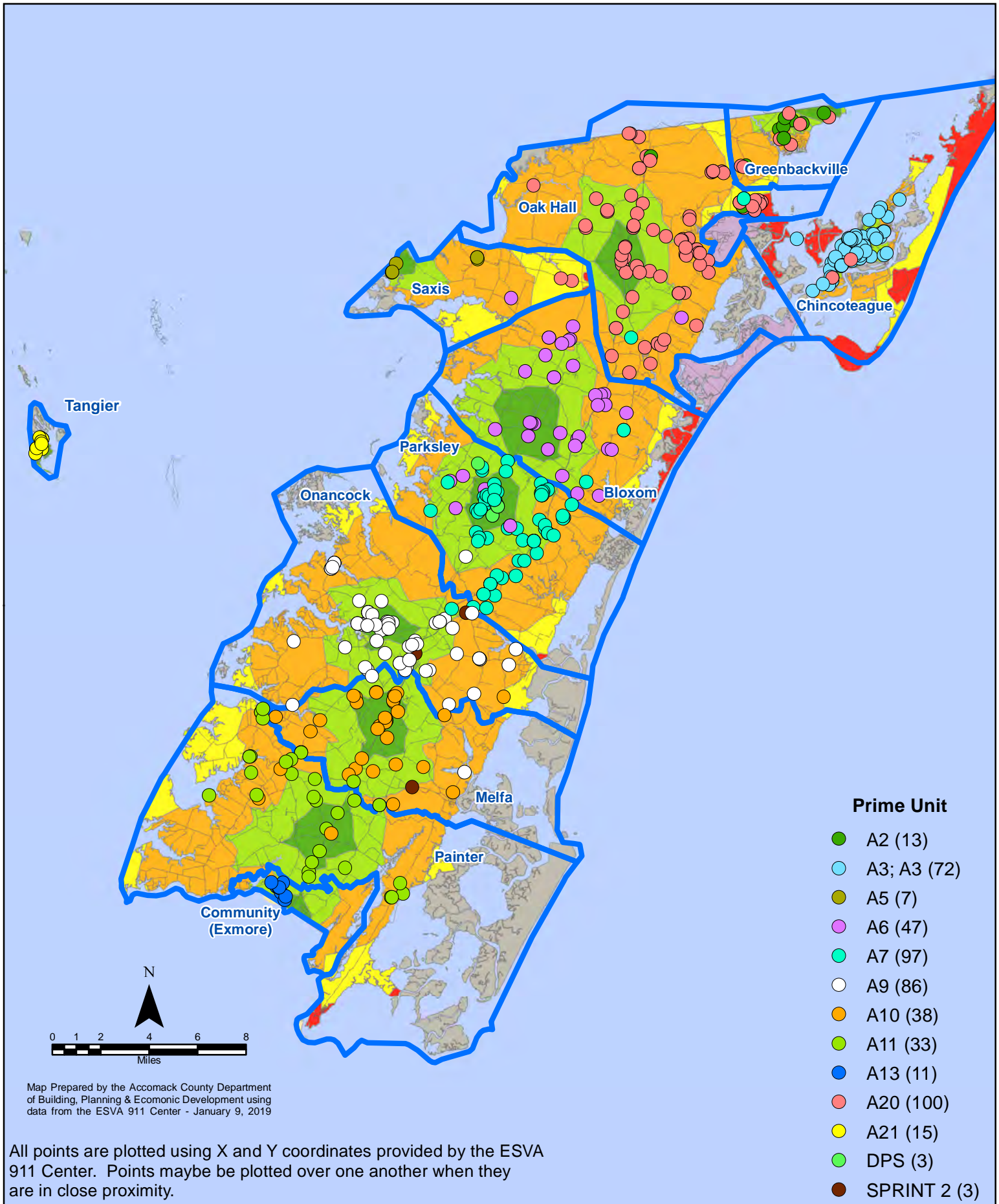
December 2018 EMS Calls By Prime Unit



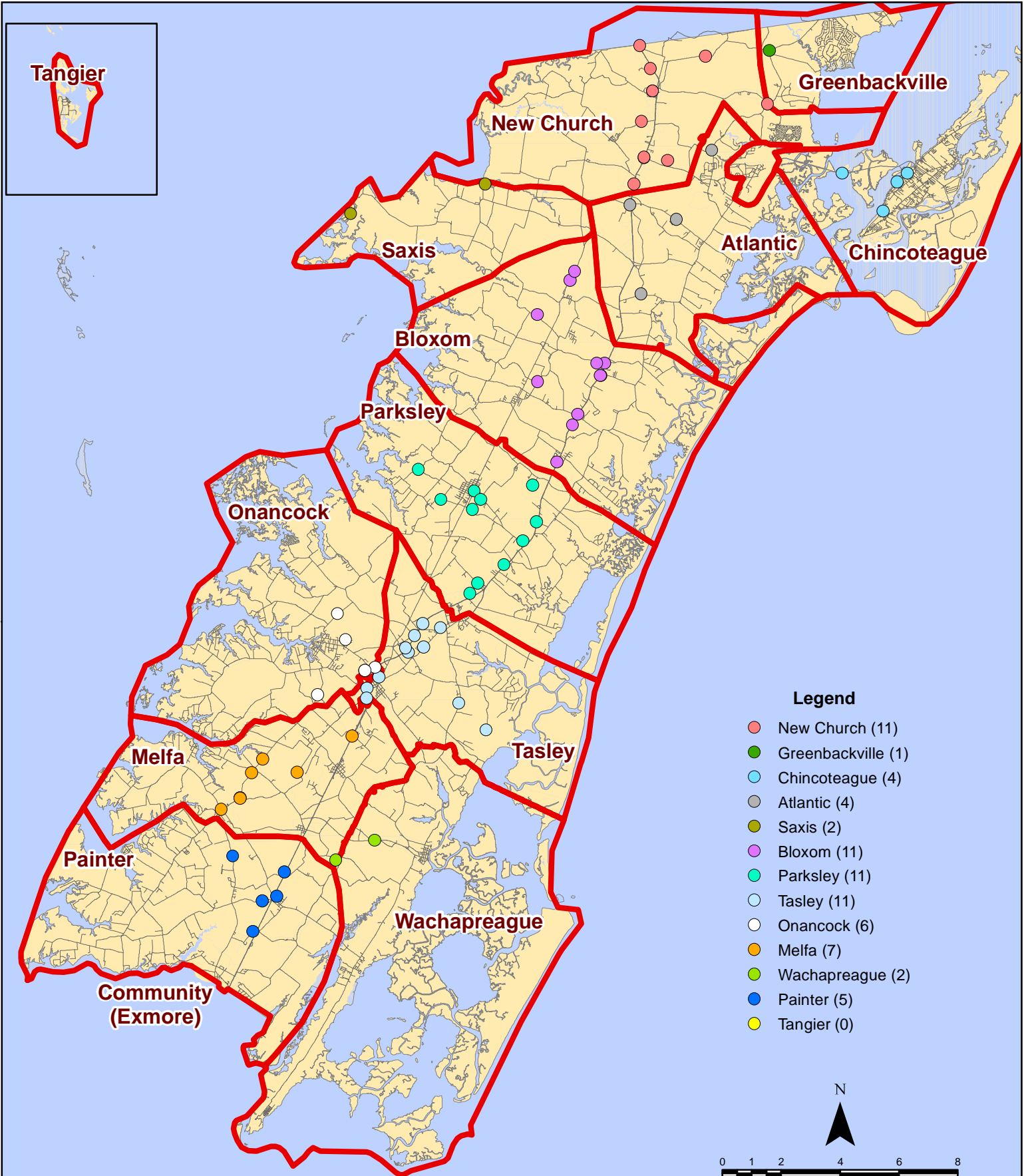
Map Prepared by the Accomack County Department of Building, Planning & Economic Development using data from the ESVA 911 Center - January 9, 2019

All points are plotted using X and Y coordinates provided by the ESVA 911 Center. Points may be plotted over one another when they are in close proximity.

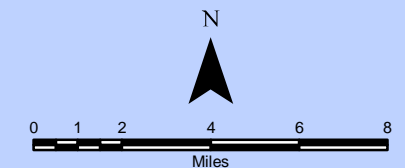
December 2018 EMS Calls By Prime Unit



December 2018 Fire Calls By District

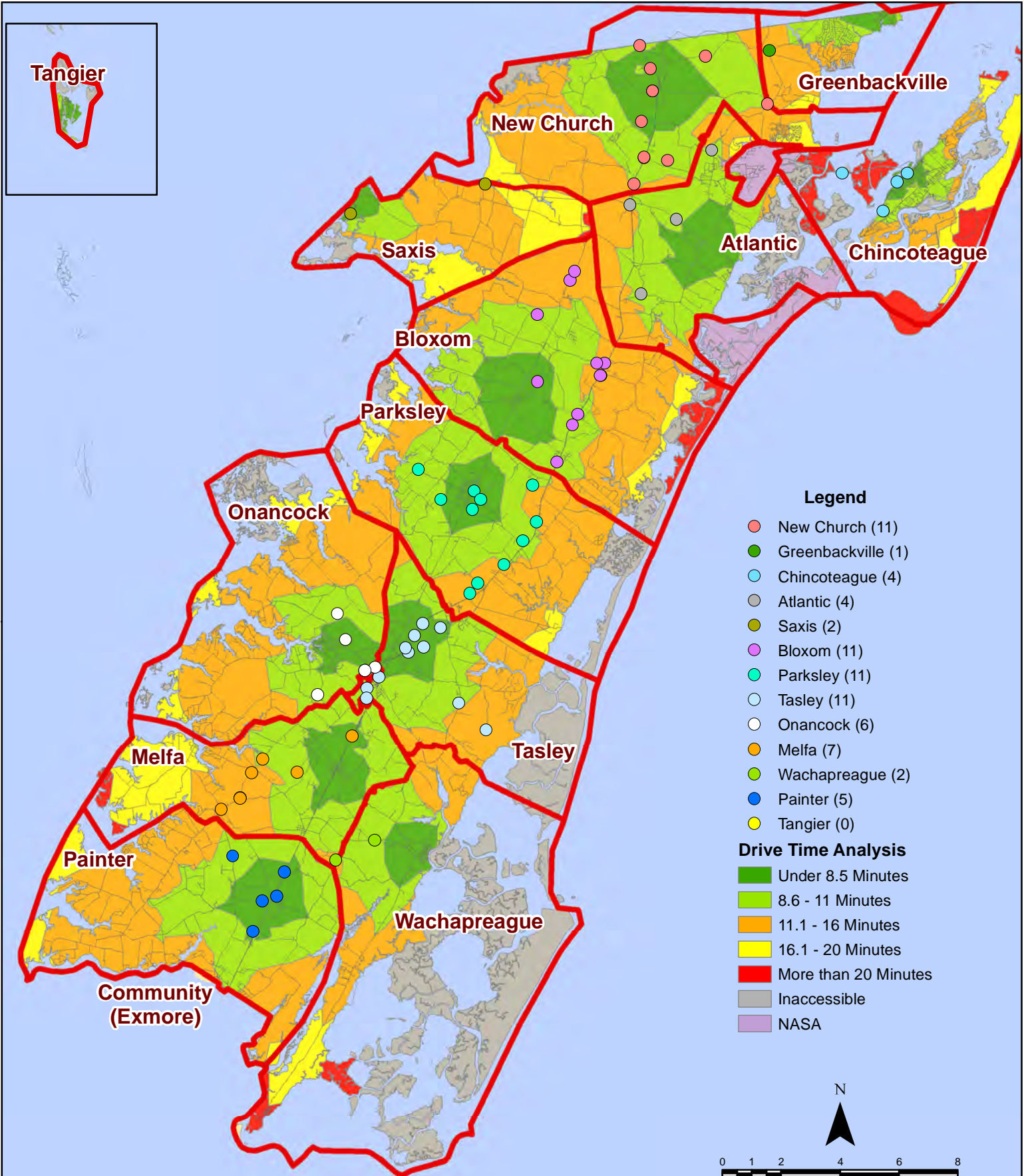


All points are plotted using X and Y coordinates provided by the ESVA 911 Center. Points may be plotted over one another when they are in close proximity.



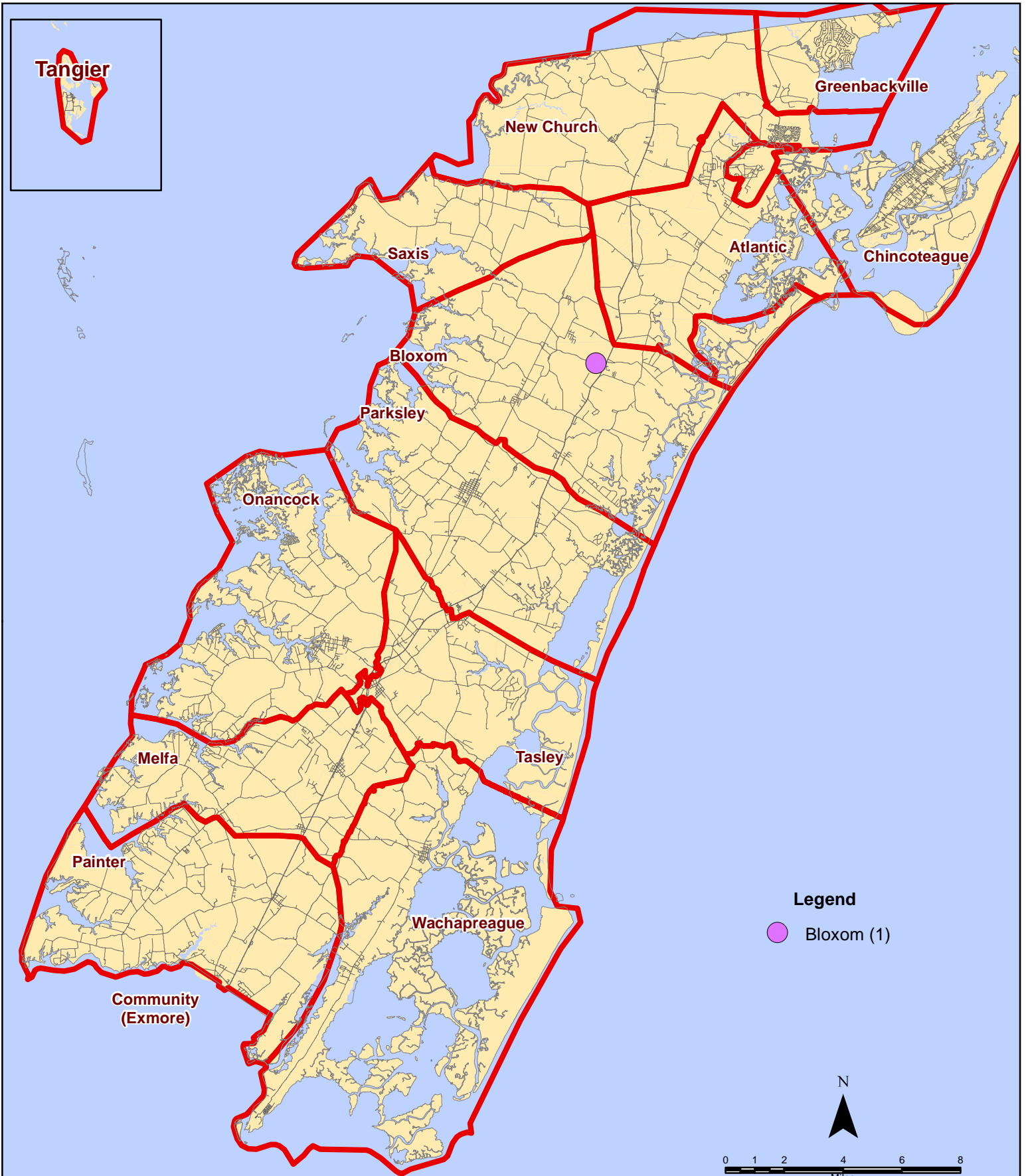
Map Prepared by the Accomack County Department of Building, Planning & Economic Development using data from the ESVA 911 Center - January 9, 2019

December 2018 Fire Calls By District

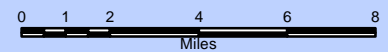


All points are plotted using X and Y coordinates provided by the ESVA 911 Center. Points maybe be plotted over one another when they are in close proximity.

December 2018 Fire Calls With Response Time Greater Than 20 Mins.

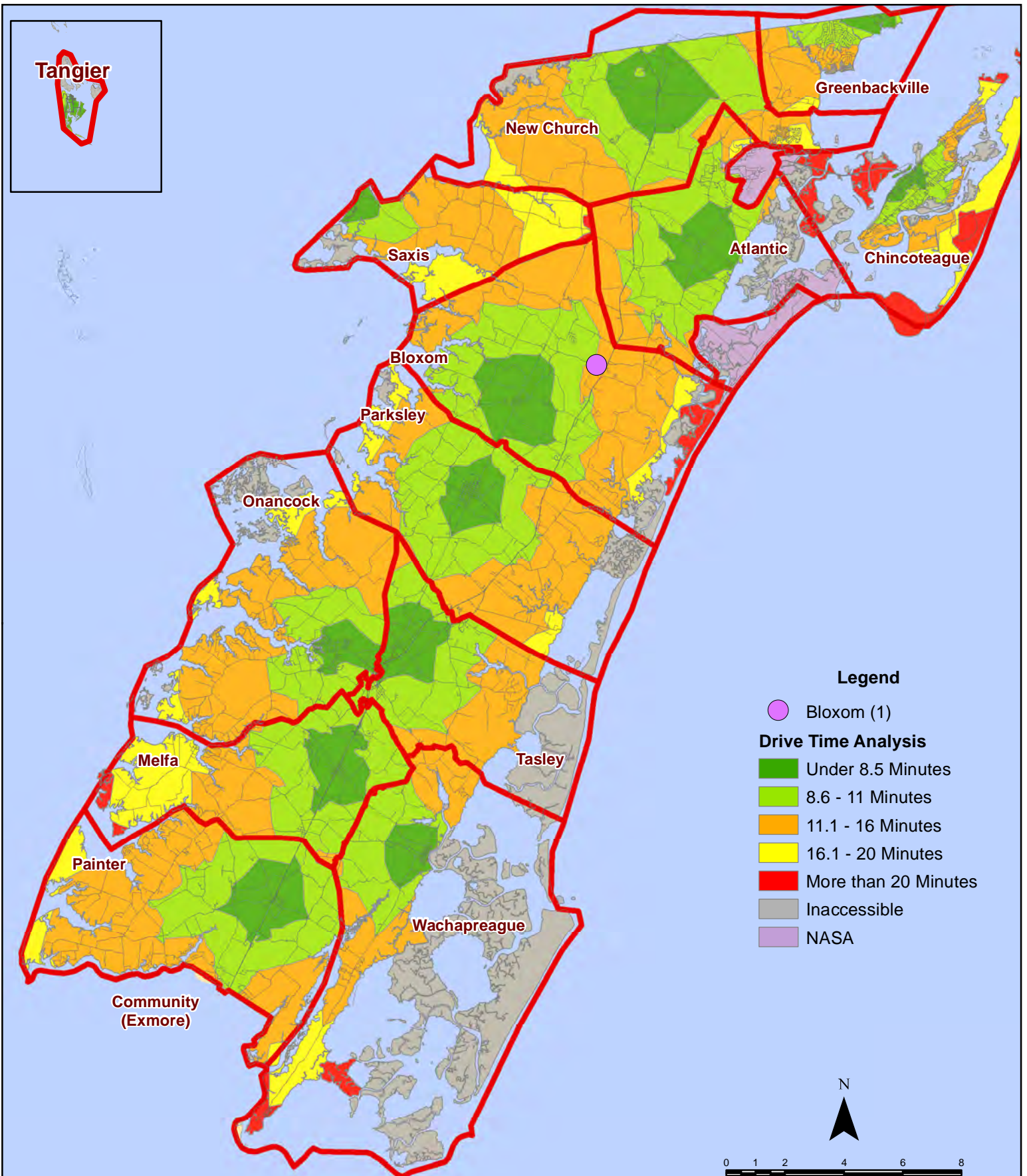


All points are plotted using X and Y coordinates provided by the ESVA 911 Center. Points may be plotted over one another when they are in close proximity.



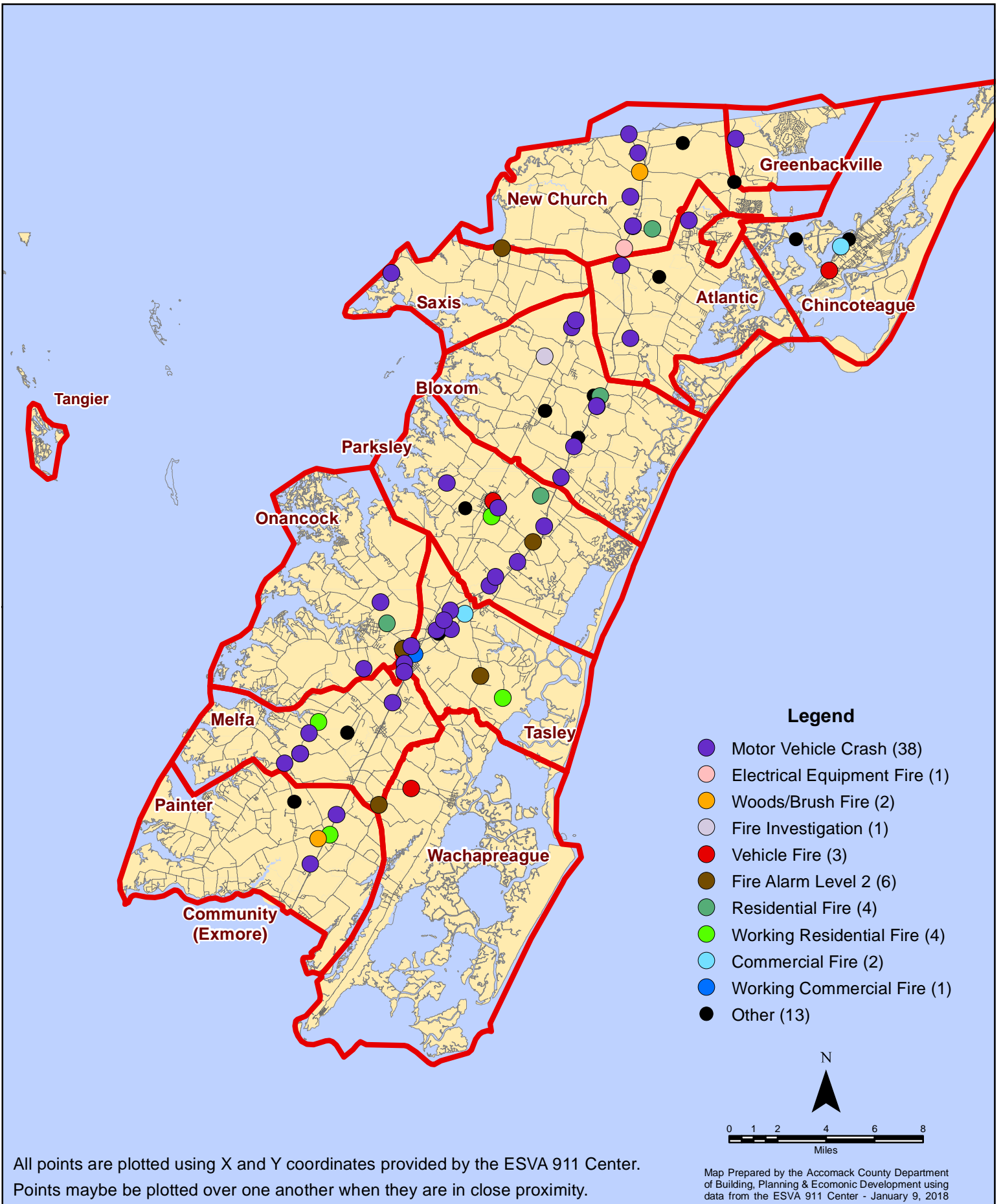
Map Prepared by the Accomack County Department of Building, Planning & Economic Development using data from the ESVA 911 Center - January 9, 2019

December 2018 Fire Calls With Response Time Greater Than 20 Mins.



All points are plotted using X and Y coordinates provided by the ESVA 911 Center. Points may be plotted over one another when they are in close proximity.

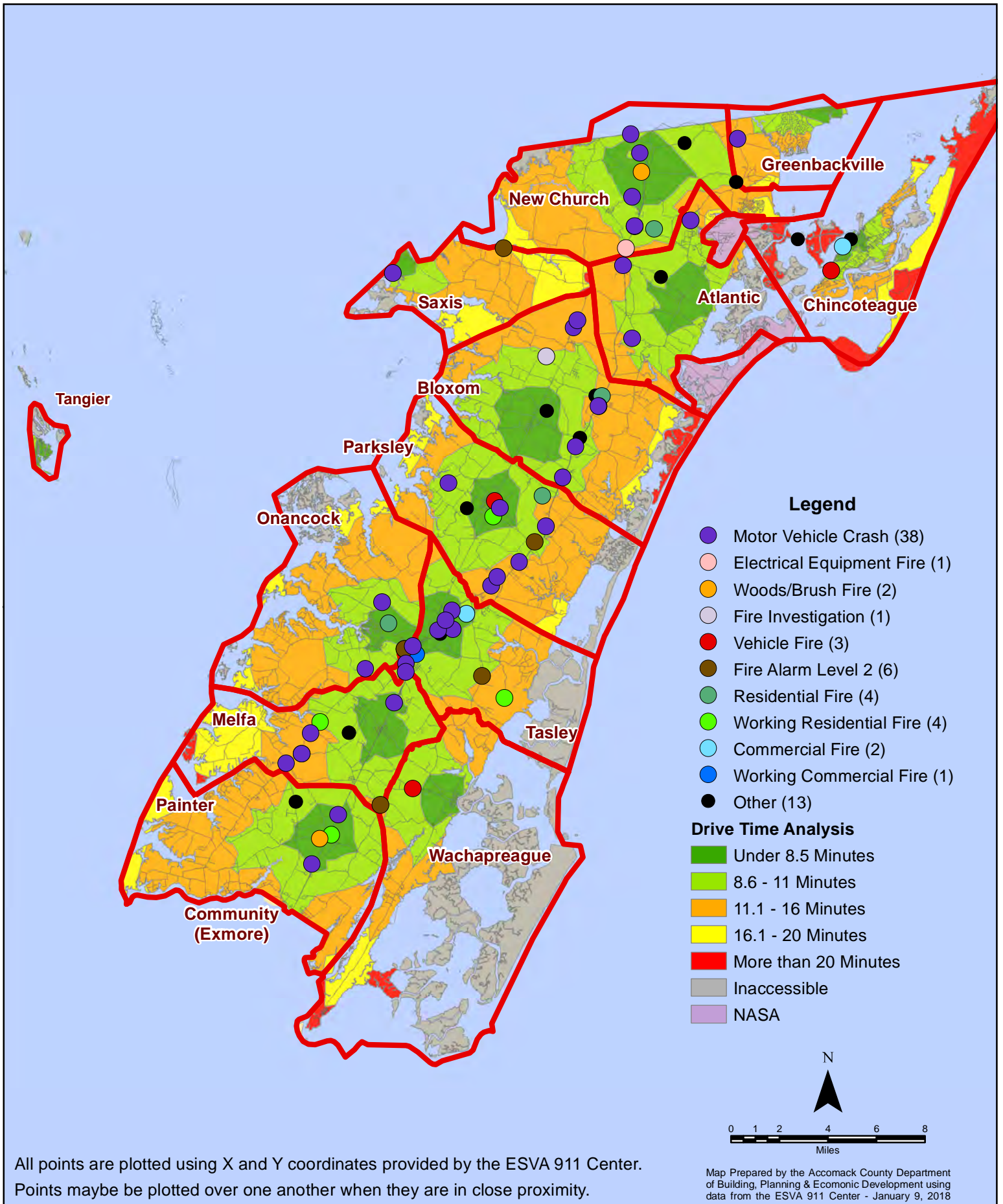
December 2018 Fire Calls By Type



All points are plotted using X and Y coordinates provided by the ESVA 911 Center. Points may be plotted over one another when they are in close proximity.

Map Prepared by the Accomack County Department of Building, Planning & Economic Development using data from the ESVA 911 Center - January 9, 2018

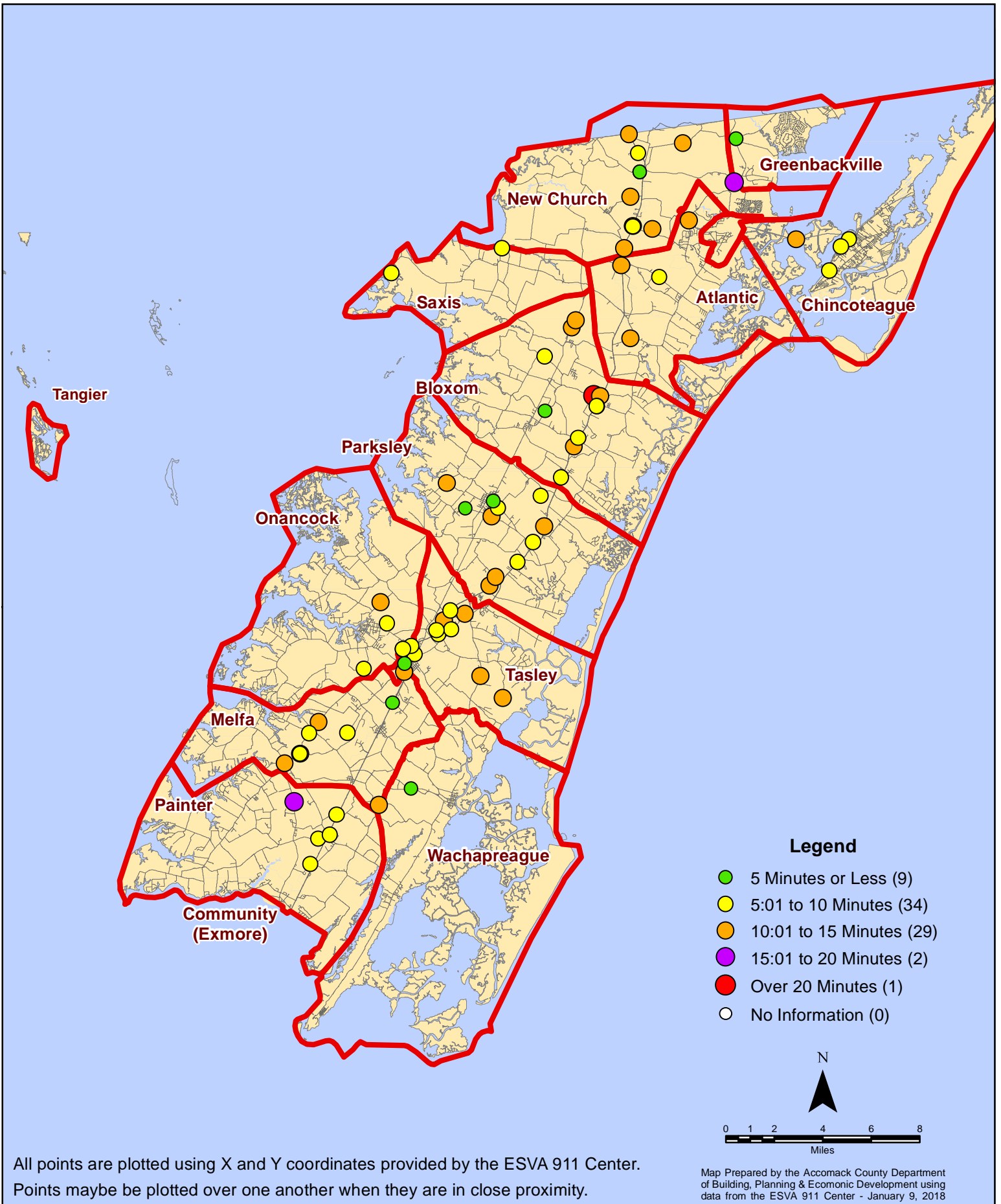
December 2018 Fire Calls By Type



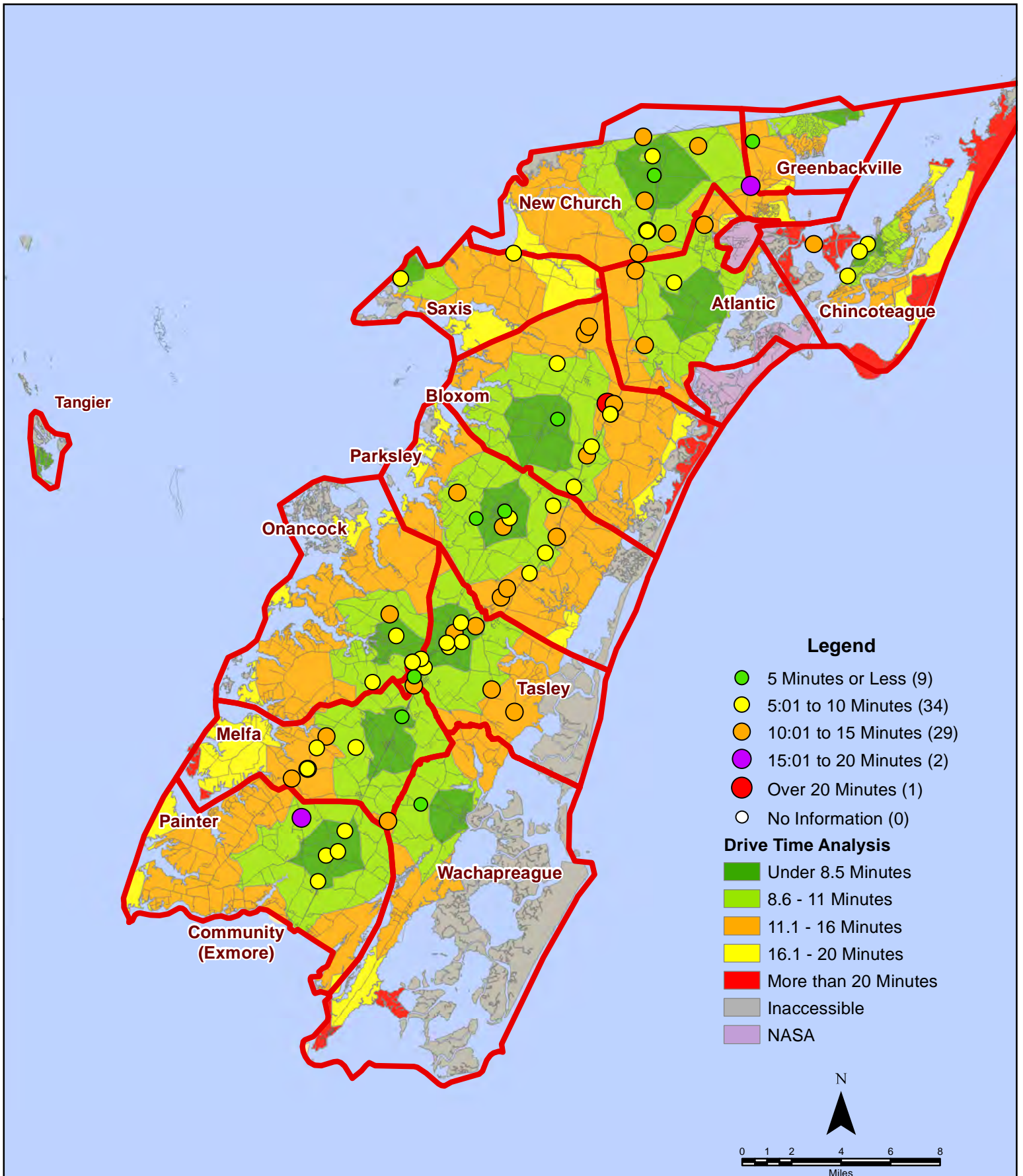
All points are plotted using X and Y coordinates provided by the ESVA 911 Center. Points may be plotted over one another when they are in close proximity.

Map Prepared by the Accomack County Department of Building, Planning & Economic Development using data from the ESVA 911 Center - January 9, 2018

December 2018 Fire Calls By Response Time



December 2018 Fire Calls By Response Time



All points are plotted using X and Y coordinates provided by the ESVA 911 Center. Points may be plotted over one another when they are in close proximity.

Map Prepared by the Accomack County Department of Building, Planning & Economic Development using data from the ESVA 911 Center - January 9, 2018