

November 2018

Fire - Performance Measure Data *					
Response District	Total Calls in District	Greater than 20 min. Response Time	Calls Handled by other agency	Longest Response Time	Overall Station Benchmark %
New Church	9	1	2	0:21:08	88.9%
Greenbackville	0	0	0	0	#DIV/0!
Chincoteague	5	0	0	0:17:25	100.0%
Atlantic	10	1	0	0:33:37	90.0%
Saxis	1	0	0	0:13:03	100.0%
Bloxom	12	2	2	0:28:54	83.3%
Parksley	8	0	0	0:12:18	100.0%
Tasley	6	1	0	0:25:46	83.3%
Onancock	9	0	0	0:14:55	100.0%
Melfa	14	0	2	0:14:40	100.0%
Wachapreague	2	0	0	0:08:14	100.0%
Painter	14	0	0	0:14:09	100.0%
Tangier	0	0	0	0	#DIV/0!
System Totals	90	5	6	0:33:37	94.4%

EMS - Performance Measure Data						
Response District	Total Calls in District	Greater than 20 min. Response Time	Longest Response Time	Calls Handled by other agency	Station Benchmark Compliance %	Overall Station Reliability %
Greenbackville	9	3	0:22:42	8	66.7%	11.1%
Chincoteague	65	1	0:21:05	4	98.5%	93.8%
Saxis	5	0	0:13:12	2	100.0%	60.0%
Bloxom	42	1	0:34:03	2	97.6%	95.2%
Parksley	70	1	0:25:27	2	98.6%	97.1%
Onancock	80	0	0:15:31	4	100.0%	95.0%
Melfa	49	0	0:16:39	3	100.0%	93.9%
Wachapreague (Painter)	19	0	0:14:54	0	100.0%	100.0%
Oak Hall	73	1	0:20:31	6	98.6%	91.8%
Tangier	17	0	0:12:50	0	100.0%	100.0%
Community (Exmore)	15	0	0:11:13	1	100.0%	93.3%
System Totals	444	7	0:34:03	32	98.4%	92.8%

	Station Giving Aid														
	Greenbackville	Chincoteague	Saxis	Bloxom	Parksley	Onancock	Melfa	Wachapreague/Painter	Oak Hall	Community (Exmore)	Northampton	Wallops	NORS	2nd Call	3rd Call
Greenbackville									8				7	1	
Chincoteague									4				2	2	
Saxis									2				2		
Bloxom									1				2		
Parksley				1		1							1	1	
Onancock					1		3						1	3	
Melfa						1		2					2	1	
Wachapreague (Painter)															
Oak Hall		1		5									5	1	
Community (Exmore)								1					1		
Northampton Co.															
Wallops															
Totals	0	1	0	6	2	2	3	3	15	0	0	0	23	9	0

Hospital Destination by Unit	Station Receiving Aid		
	Riverside - Shore Memorial	PRMC	Other
Greenbackville			1
Chincoteague	11	25	
Saxis	3		
Bloxom	18		
Parksley	42		
Onancock	51	1	
Melfa	35		
Wachapreague (Painter)	22		
Oak Hall	37	14	2
Wallops			
Totals	219	41	2

Benchmark = The Accomack County Board of Supervisors established a 20 minute standard for emergency response.

NORS = No Response by station or the call was handled by another station or agency.

2nd Call = 2nd ambulance call received while first ambulance was on another call.

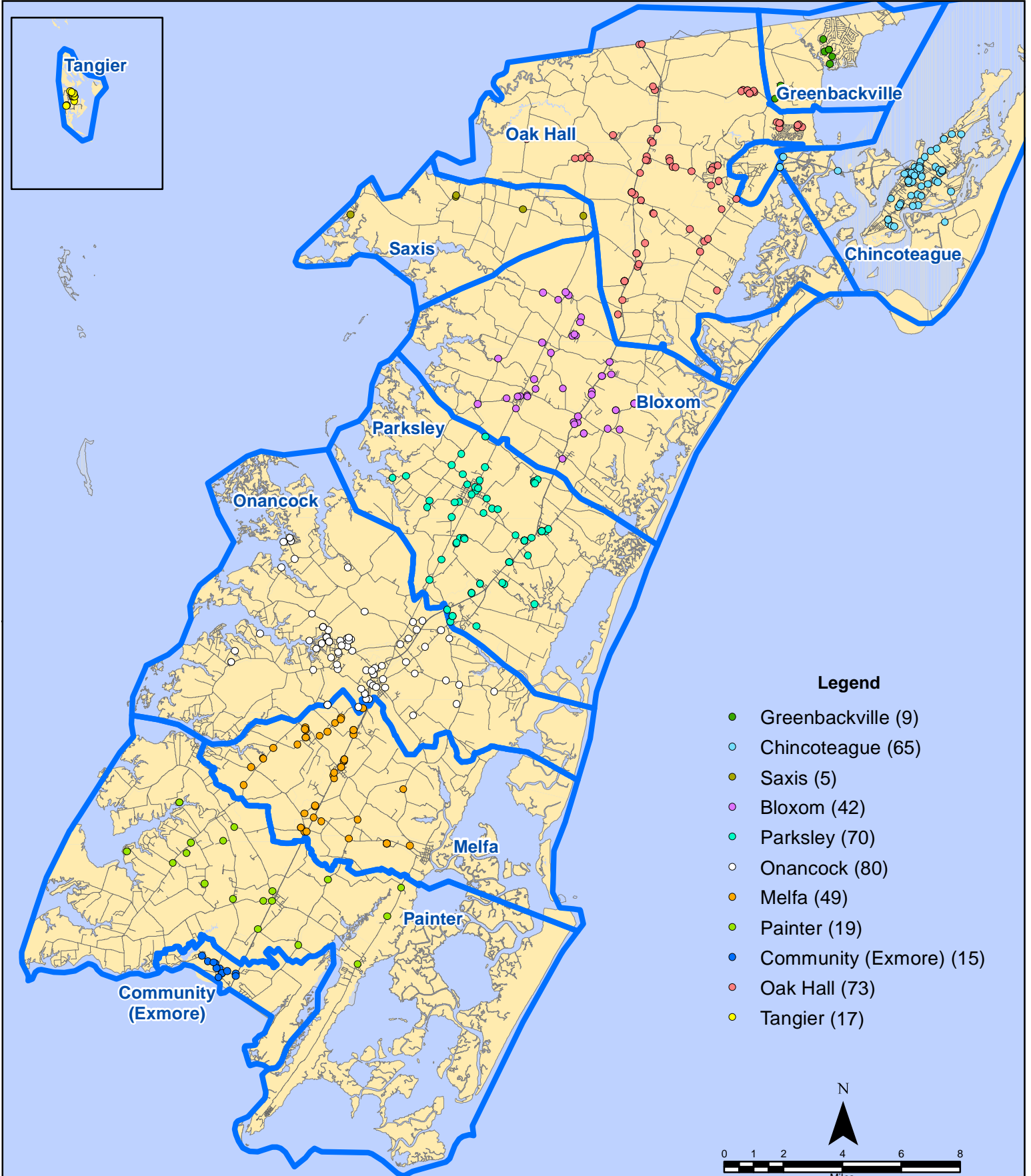
3rd Call = 3rd ambulance call received while first & second ambulances were on other calls.

* This data excludes F1 Med (Medical Assist) calls in the Fire Data.

This information was prepared using data supplied by the Eastern Shore of Virginia 911 Center. This information is original incident data only and may not be representative of all units and/or stations who responded to an incident.

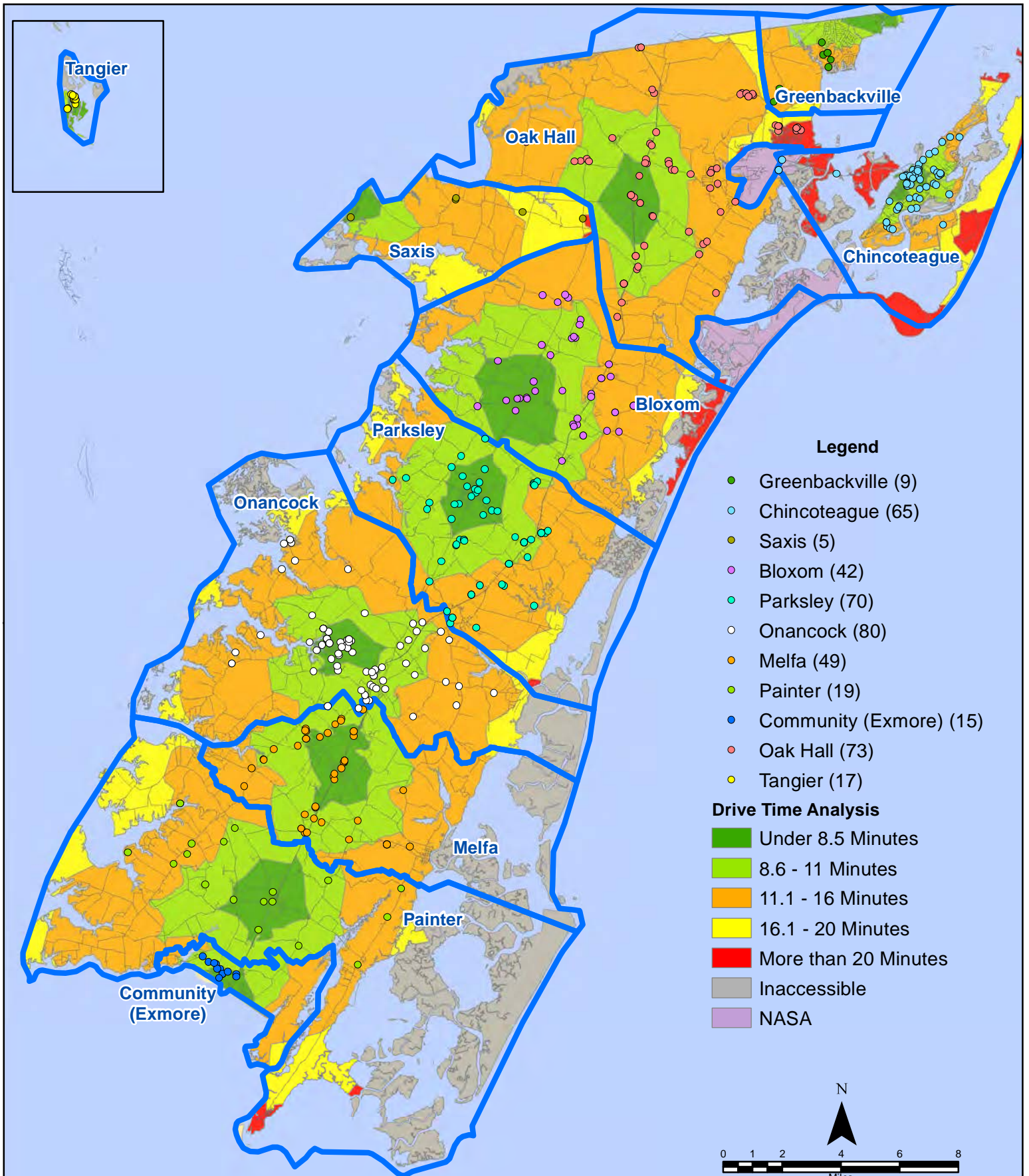
Station Receiving Aid

November 2018 EMS Calls By District

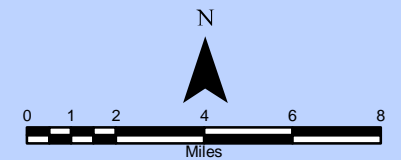


All points are plotted using X and Y coordinates provided by the ESVA 911 Center.
 Points may be plotted over one another when they are in close proximity.

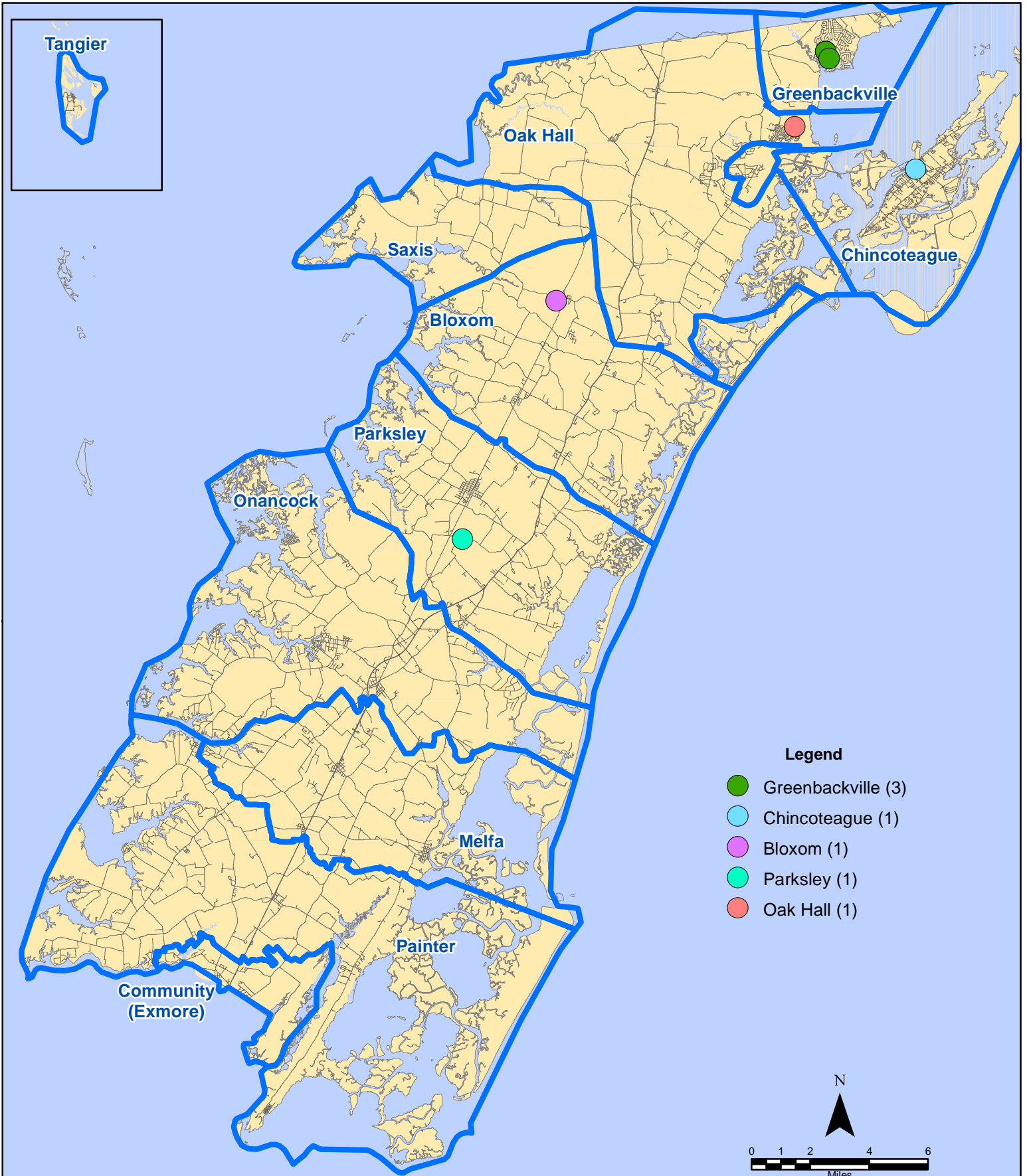
November 2018 EMS Calls By District



All points are plotted using X and Y coordinates provided by the ESVA 911 Center. Points may be plotted over one another when they are in close proximity.



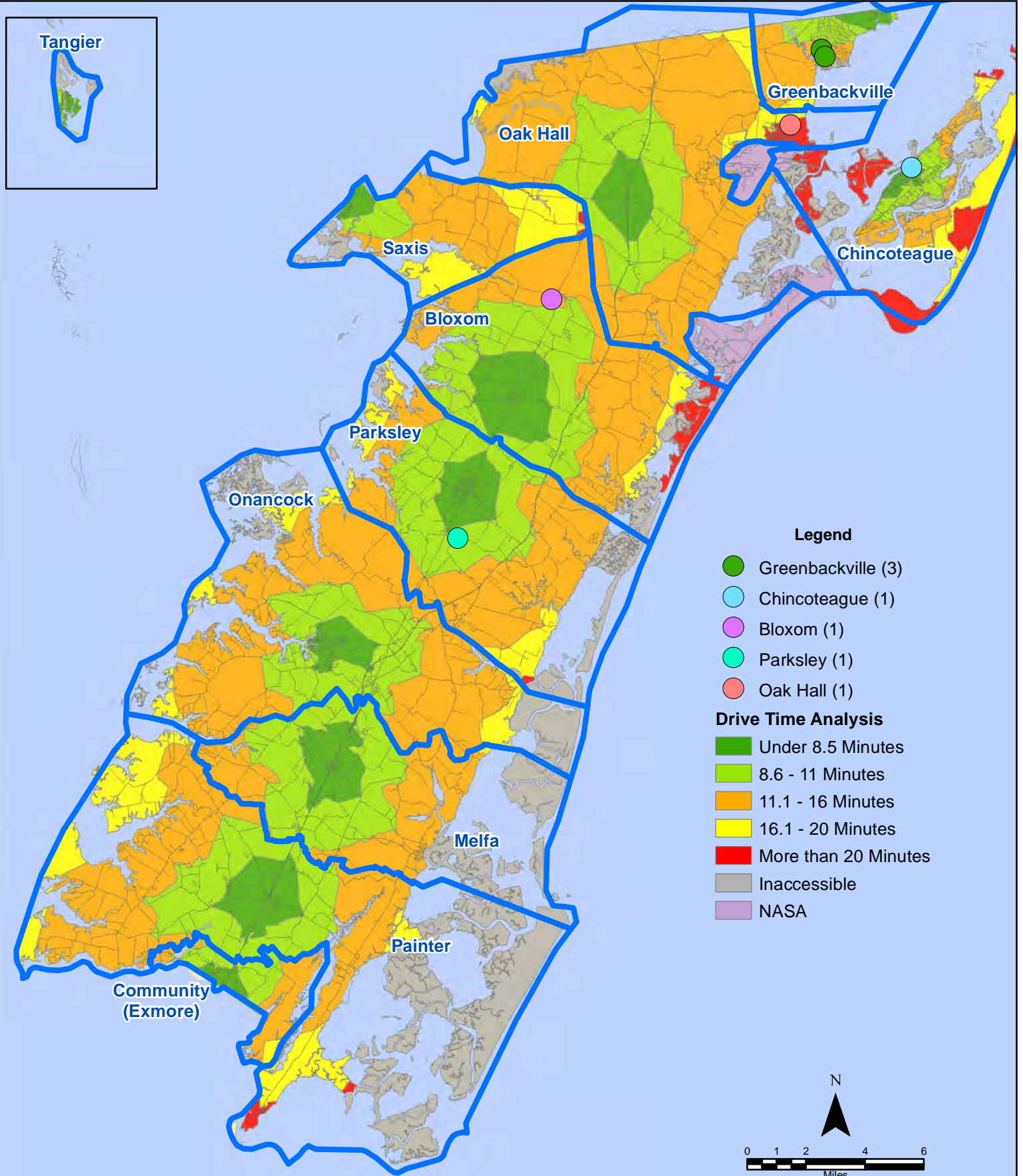
November 2018 EMS Calls With Response Time Greater Than 20 Mins.



All points are plotted using X and Y coordinates provided by the ESVA 911 Center. Points may be plotted over one another when they are in close proximity.

Map Prepared by the Accomack County Department of Building, Planning & Economic Development using data from the ESVA 911 Center. - December 10, 2018

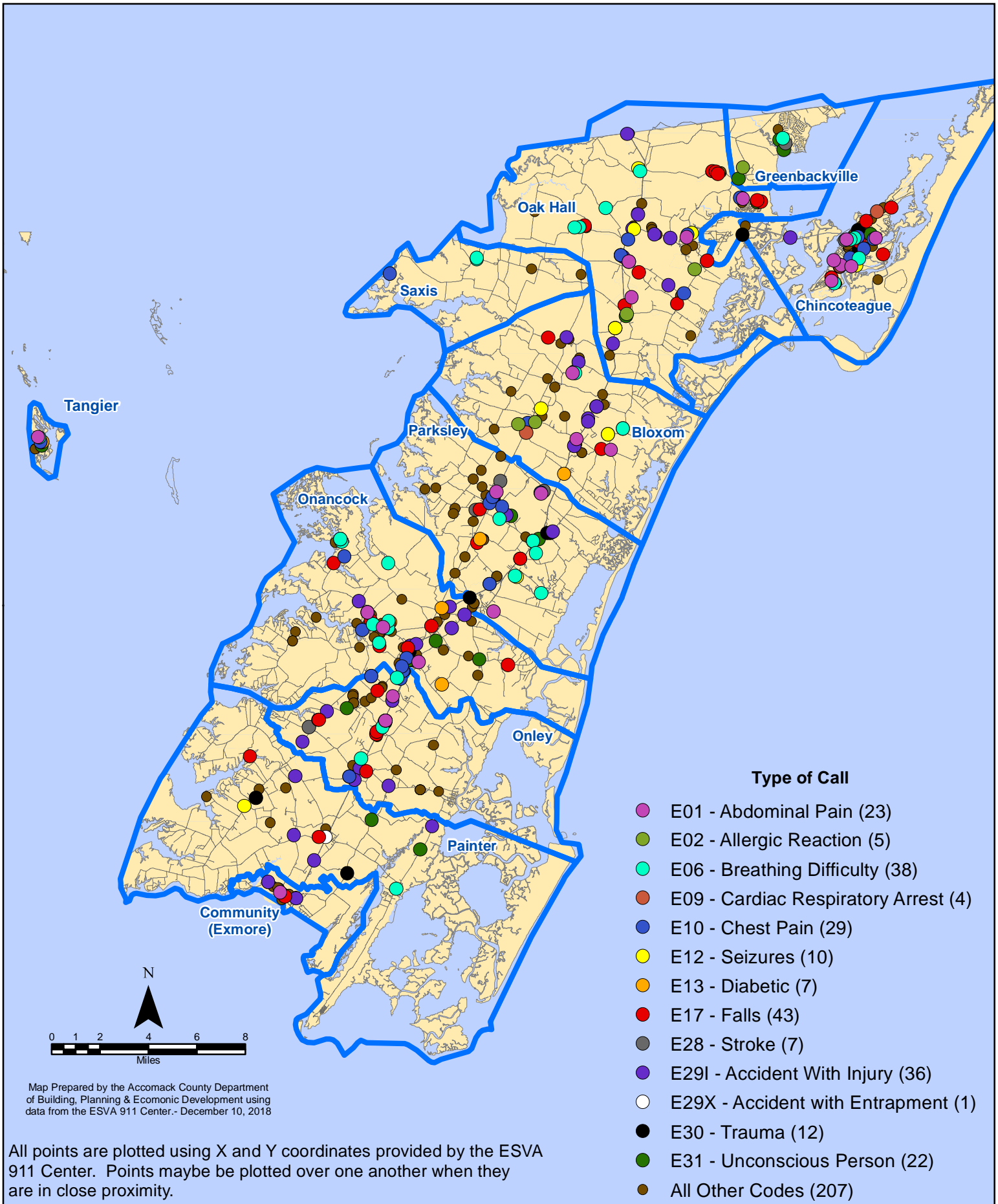
November 2018 EMS Calls With Response Time Greater Than 20 Mins.



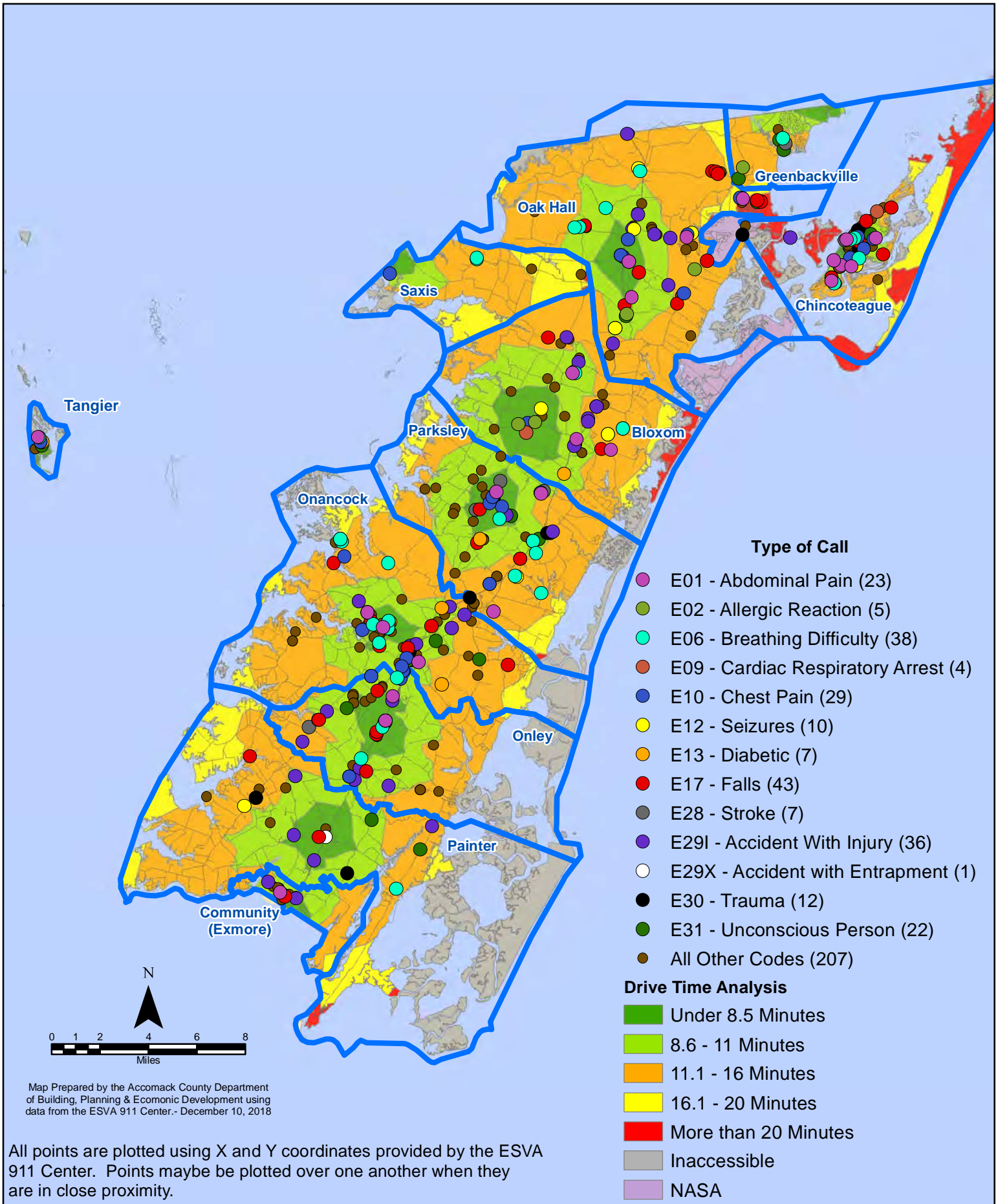
All points are plotted using X and Y coordinates provided by the ESVA 911 Center. Points may be plotted over one another when they are in close proximity.

Map Prepared by the Accomack County Department of Building, Planning & Economic Development using data from the ESVA 911 Center. - December 10, 2018

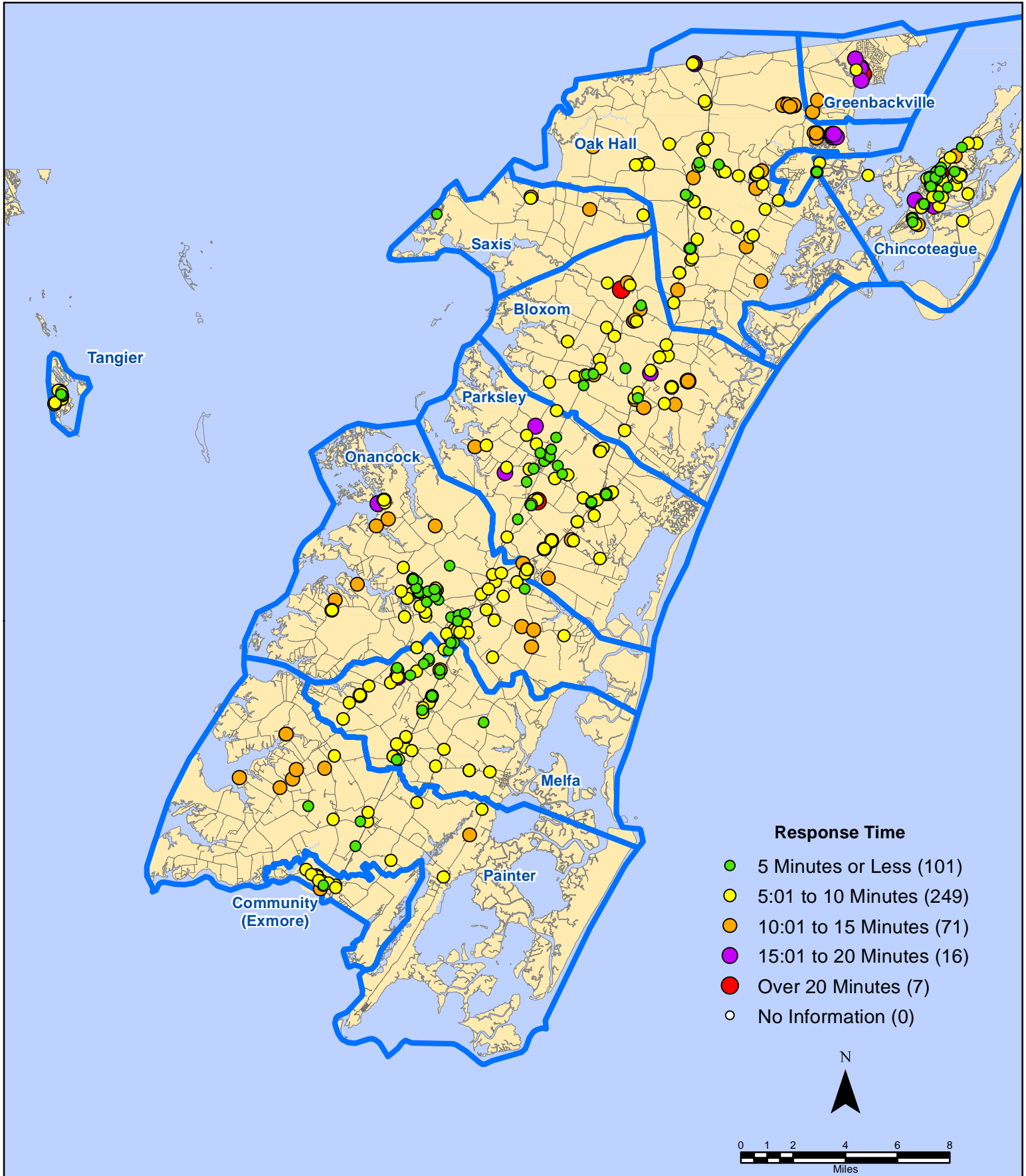
November 2018 EMS Calls By Type



November 2018 EMS Calls By Type



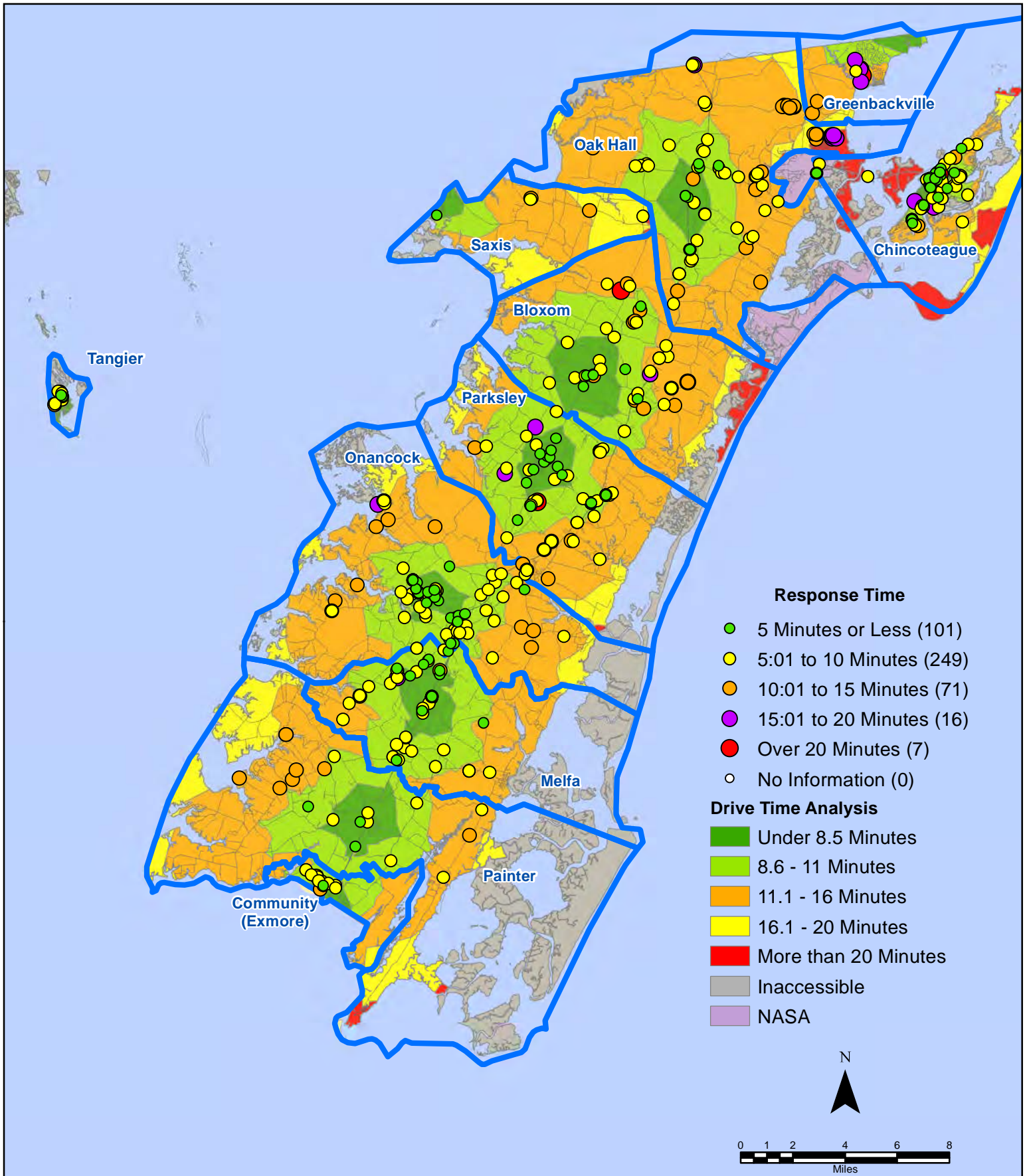
November 2018 EMS Calls By Response Time



All points are plotted using X and Y coordinates provided by the ESVA 911 Center.
Points may be plotted over one another when they are in close proximity.

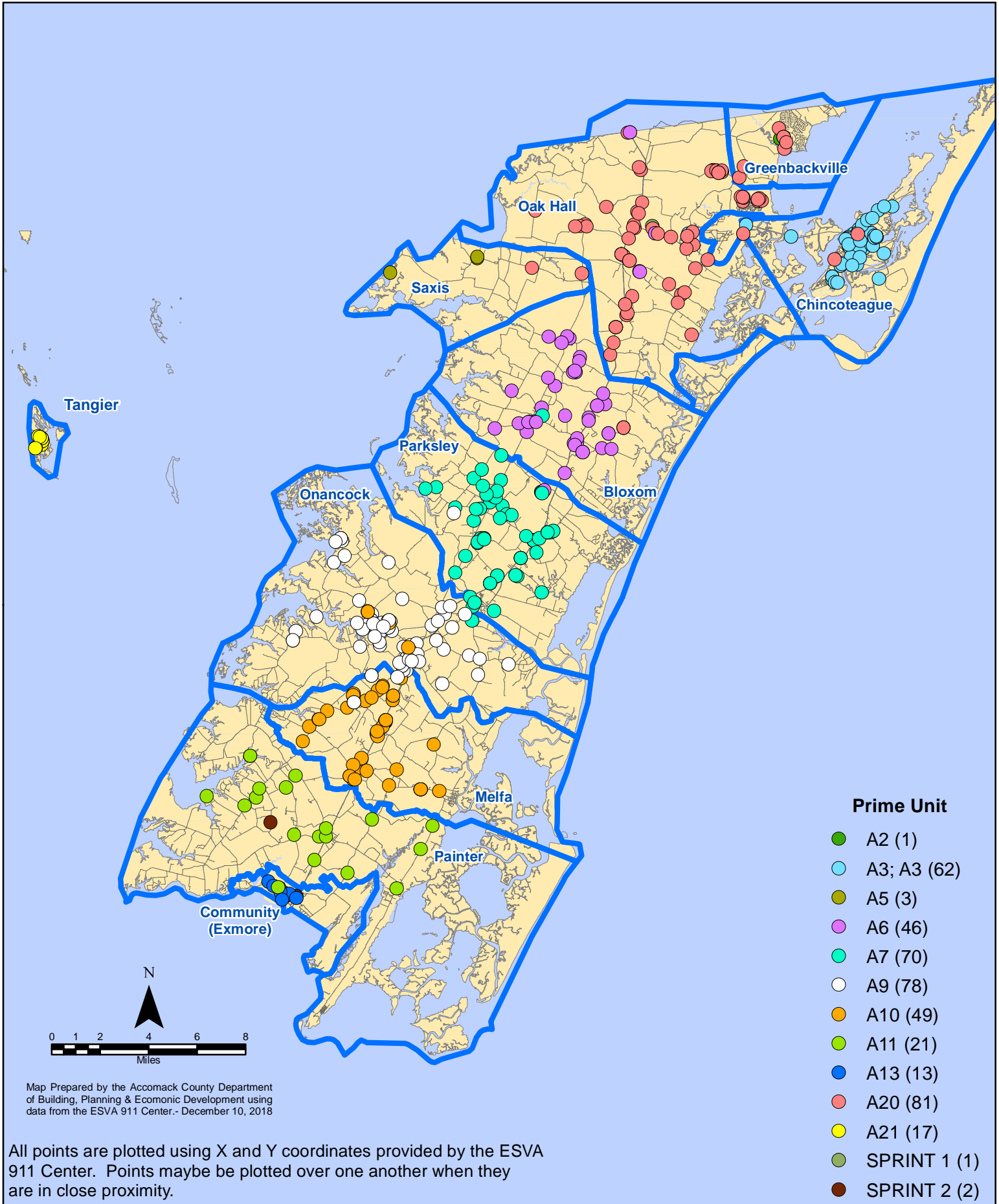
Map Prepared by the Accomack County Department of Building, Planning & Economic Development using data from the ESVA 911 Center.- December 10, 2018

November 2018 EMS Calls By Response Time

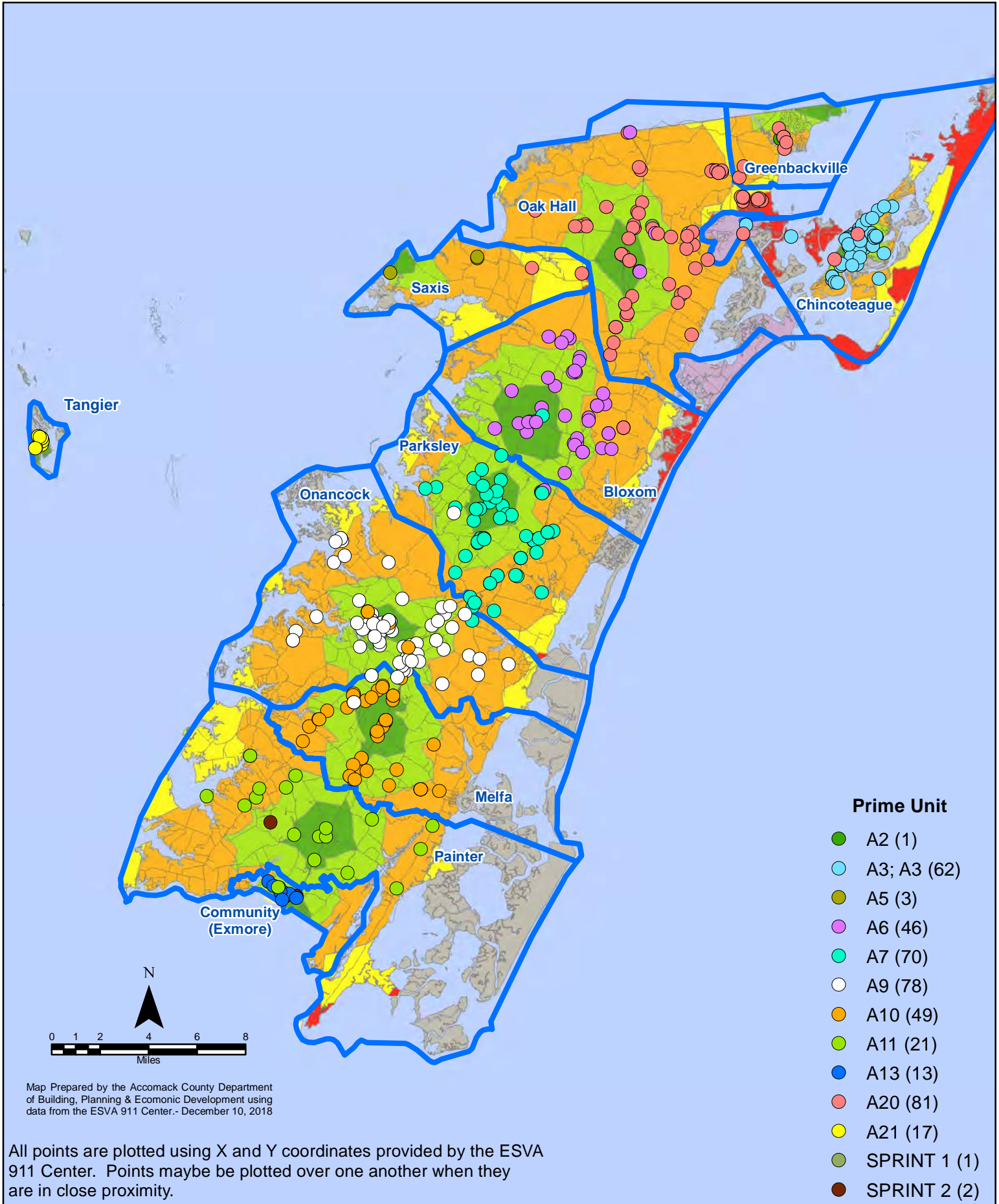


All points are plotted using X and Y coordinates provided by the ESVA 911 Center.
Points may be plotted over one another when they are in close proximity.

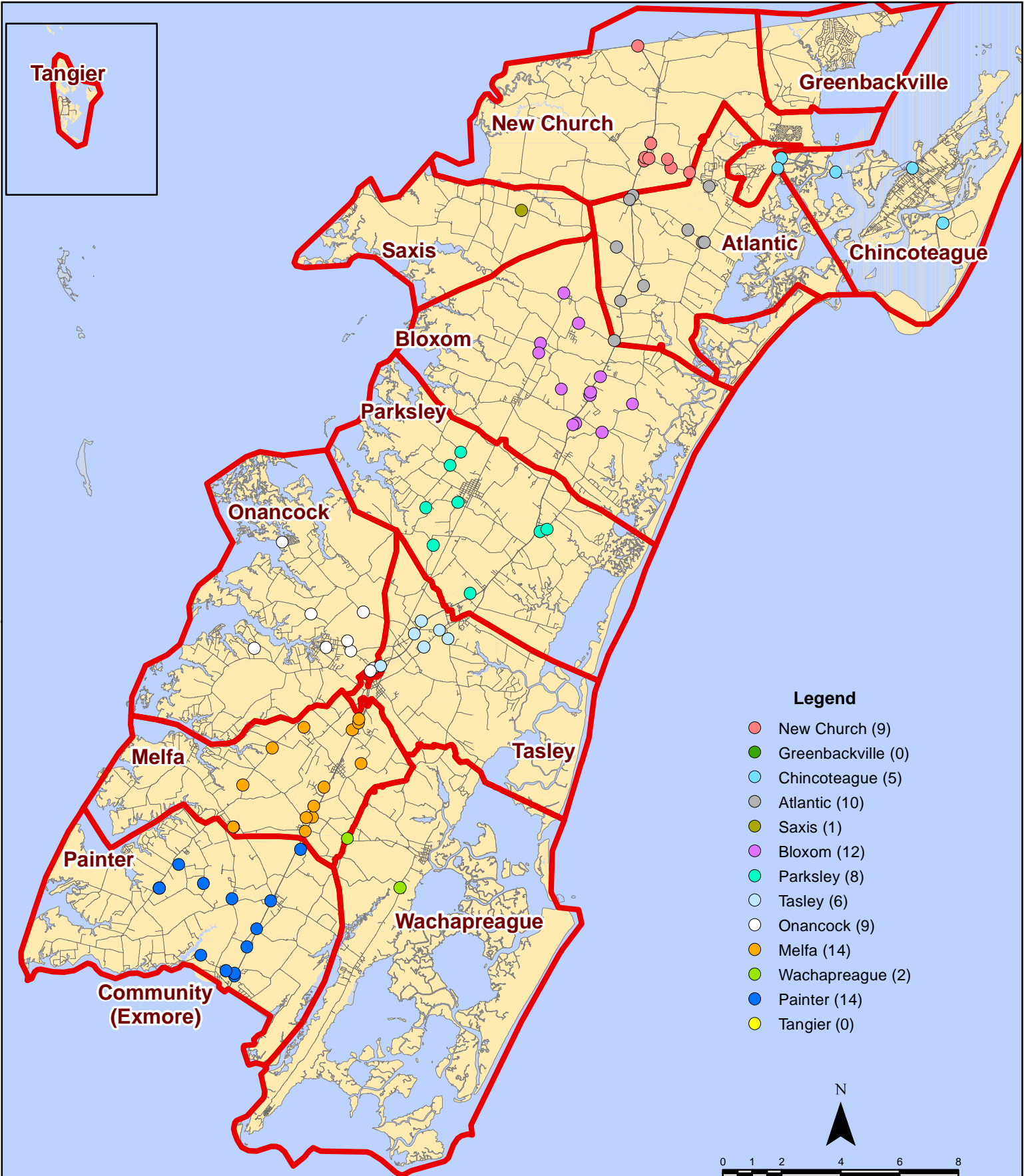
November 2018 EMS Calls By Prime Unit



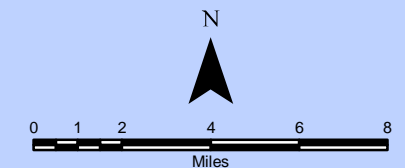
November 2018 EMS Calls By Prime Unit



November 2018 Fire Calls By District

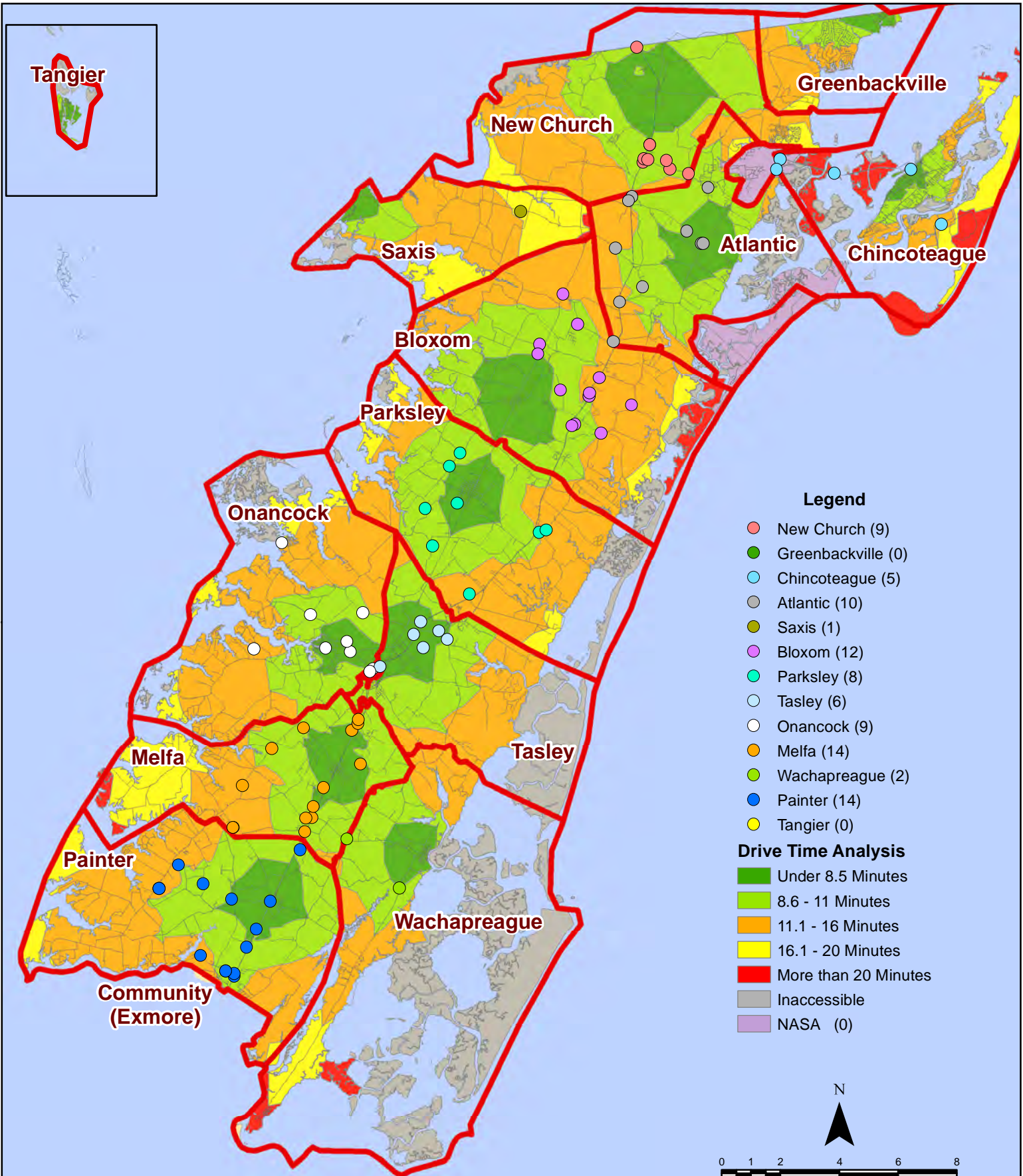


All points are plotted using X and Y coordinates provided by the ESVA 911 Center. Points may be plotted over one another when they are in close proximity.



Map Prepared by the Accomack County Department of Building, Planning & Economic Development using data from the ESVA 911 Center.- December 10, 2018

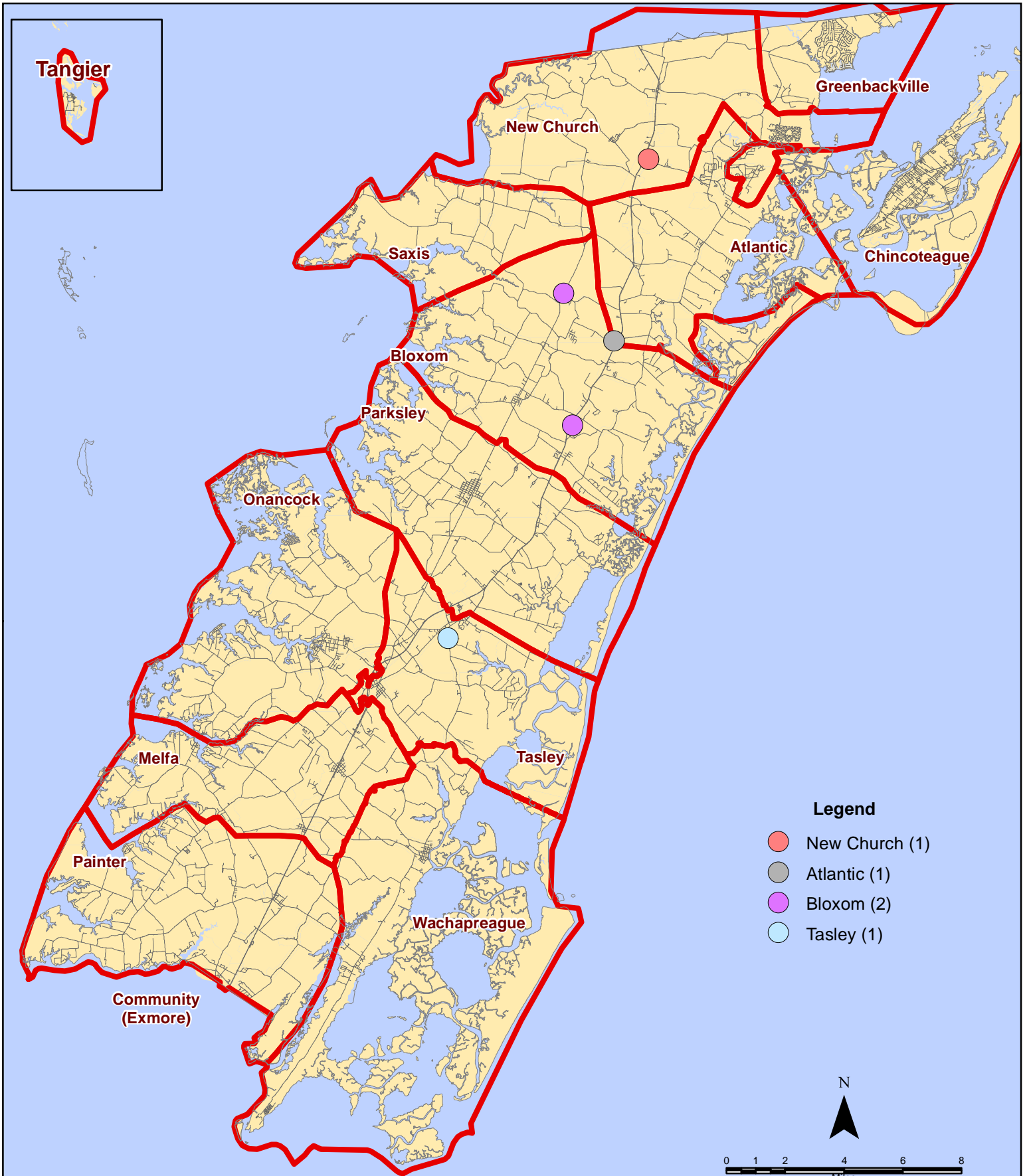
November 2018 Fire Calls By District



All points are plotted using X and Y coordinates provided by the ESVA 911 Center. Points may be plotted over one another when they are in close proximity.

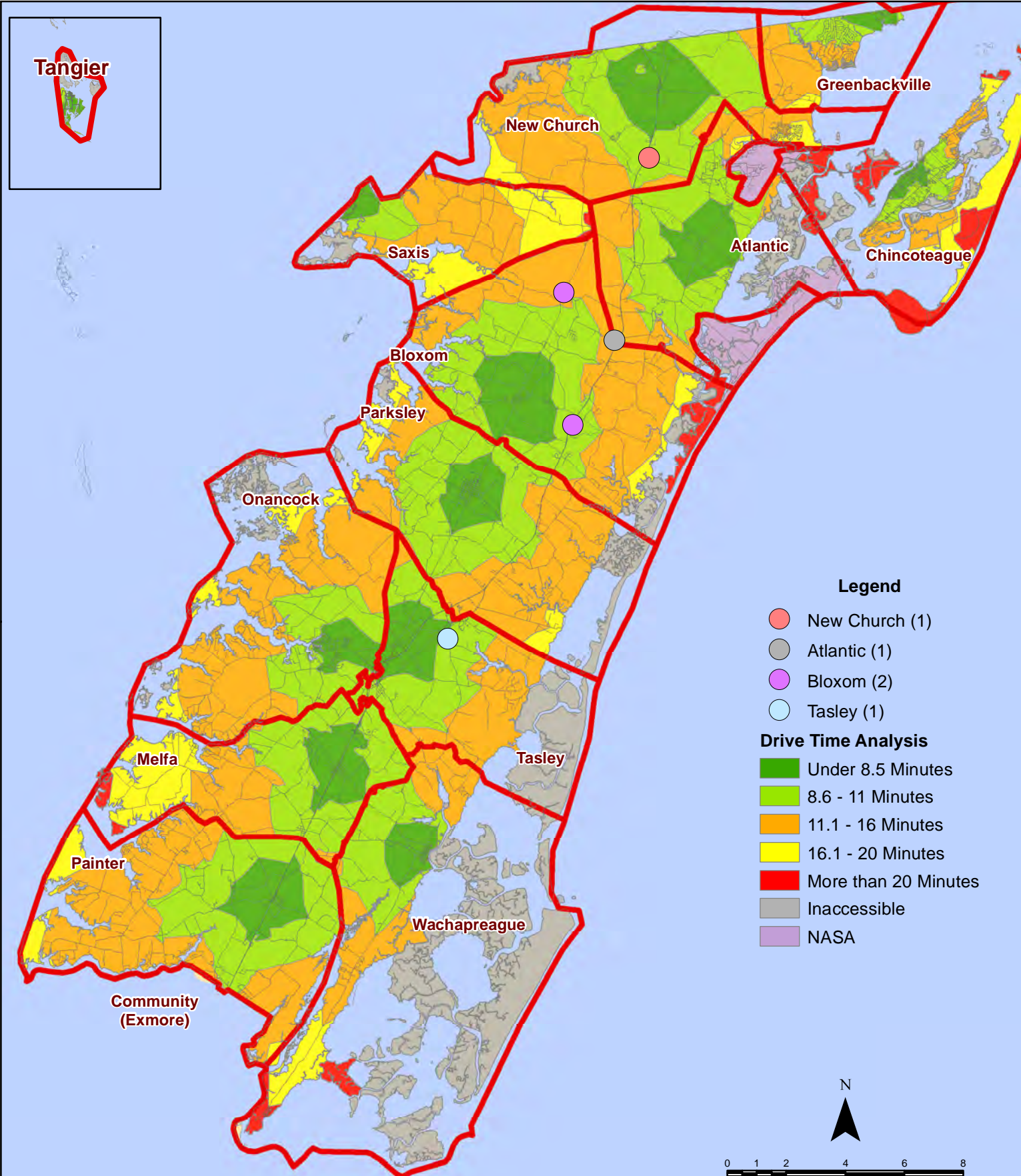
Map Prepared by the Accomack County Department of Building, Planning & Economic Development using data from the ESVA 911 Center.- December 10, 2018

November 2018 Fire Calls With Response Time Greater Than 20 Mins.



All points are plotted using X and Y coordinates provided by the ESVA 911 Center. Points may be plotted over one another when they are in close proximity.

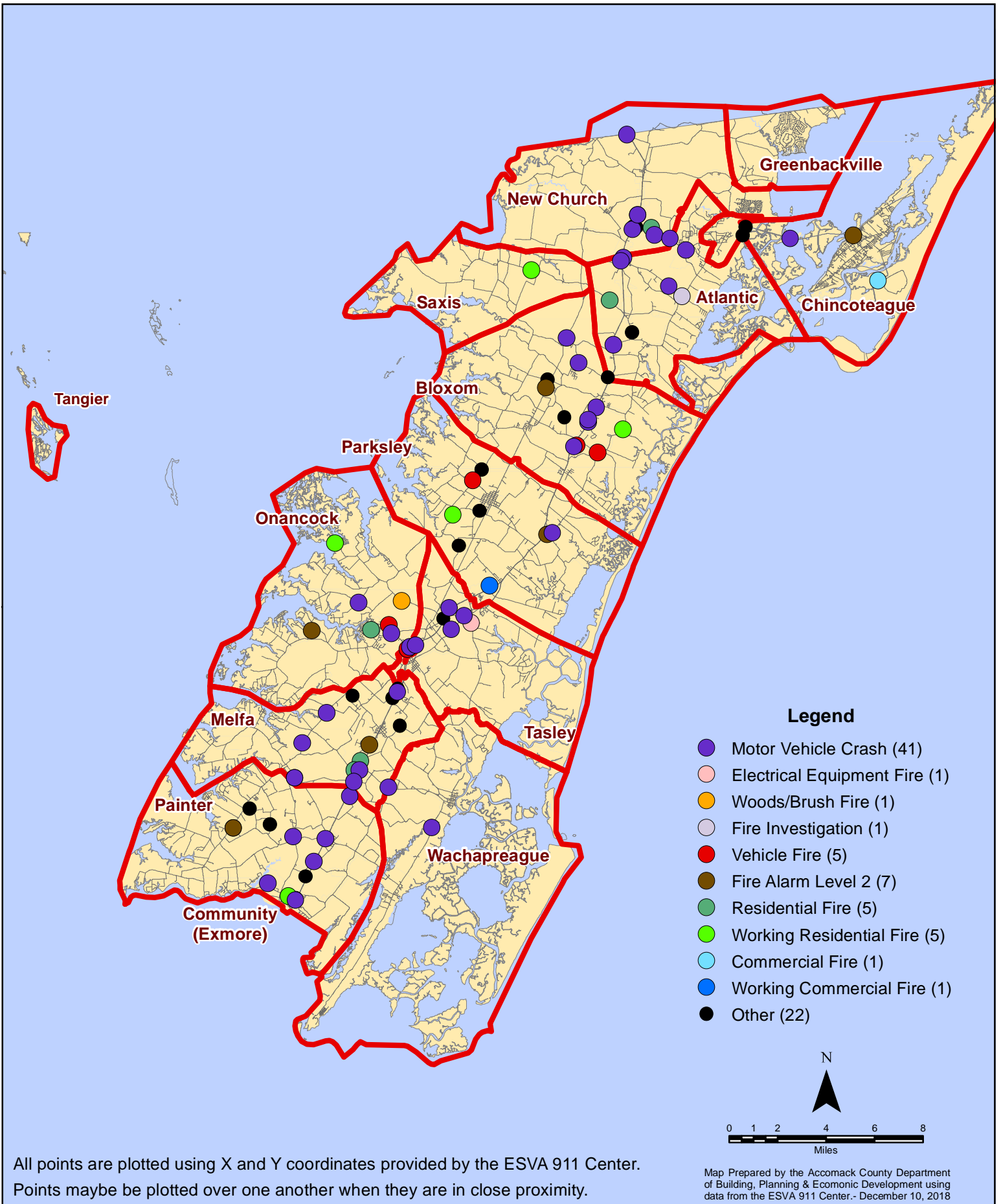
November 2018 Fire Calls With Response Time Greater Than 20 Mins.



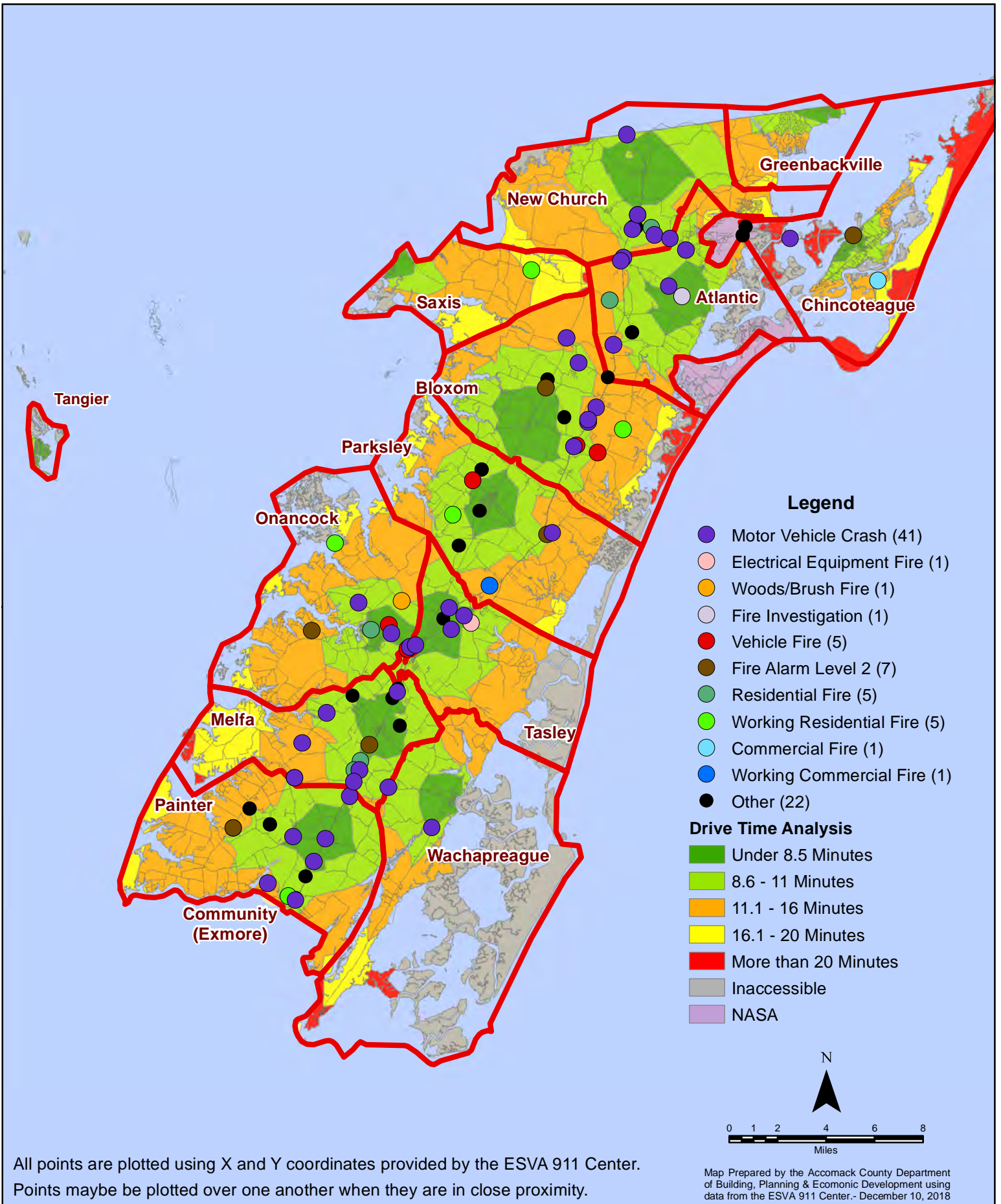
All points are plotted using X and Y coordinates provided by the ESVA 911 Center. Points may be plotted over one another when they are in close proximity.

Map Prepared by the Accomack County Department of Building, Planning & Economic Development using data from the ESVA 911 Center. - December 10, 2018

November 2018 Fire Calls By Type



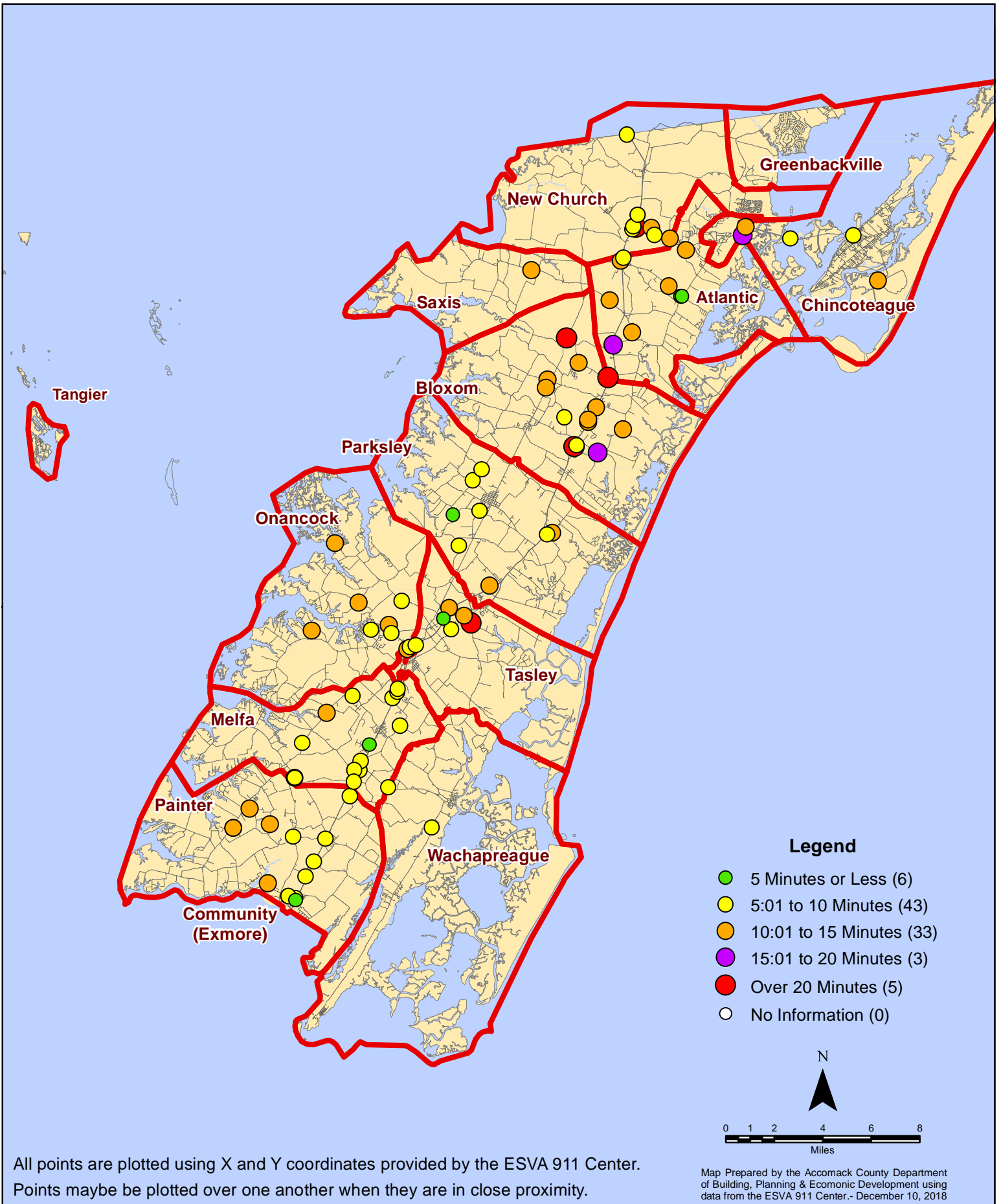
November 2018 Fire Calls By Type



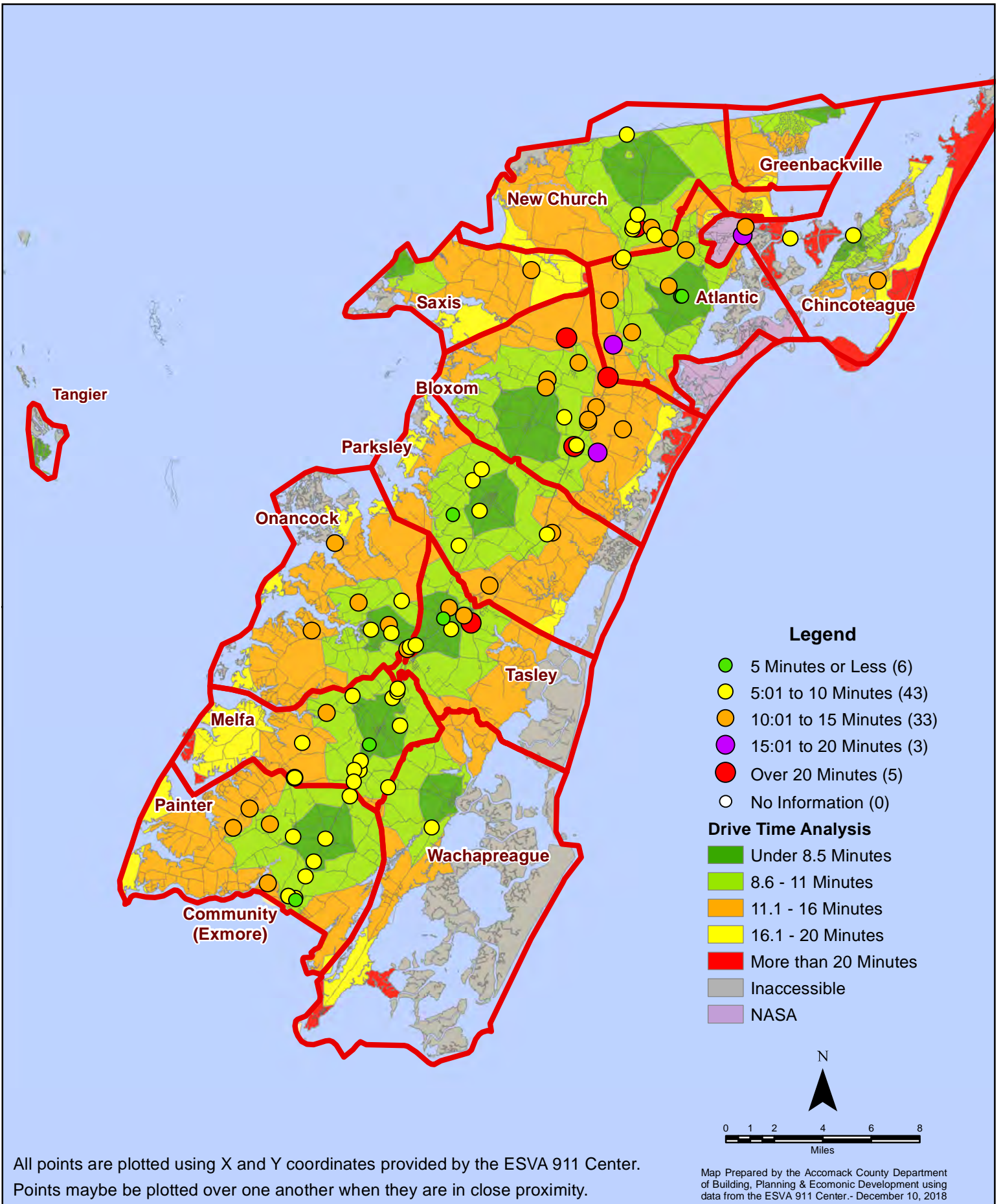
All points are plotted using X and Y coordinates provided by the ESVA 911 Center. Points may be plotted over one another when they are in close proximity.

Map Prepared by the Accomack County Department of Building, Planning & Economic Development using data from the ESVA 911 Center. - December 10, 2018

November 2018 Fire Calls By Response Time



November 2018 Fire Calls By Response Time



All points are plotted using X and Y coordinates provided by the ESVA 911 Center. Points may be plotted over one another when they are in close proximity.

Map Prepared by the Accomack County Department of Building, Planning & Economic Development using data from the ESVA 911 Center. - December 10, 2018