

August 2018

Fire - Performance Measure Data *					
Response District	Total Calls in District	Greater than 20 min. Response Time	Calls Handled by other agency	Longest Response Time	Overall Station Benchmark %
New Church	18	0	2	0:18:54	100.0%
Greenbackville	3	0	0	0:16:48	100.0%
Chincoteague	9	0	0	0:15:28	100.0%
Atlantic	9	0	0	0:13:53	100.0%
Saxis	0	0	0	0	#DIV/0!
Bloxom	6	1	1	0:31:31	83.3%
Parksley	10	0	0	0:15:17	100.0%
Tasley	12	0	0	0:14:32	100.0%
Onancock	5	0	0	0:13:25	100.0%
Melfa	14	1	2	0:35:08	92.9%
Wachapreague	3	0	0	0:11:21	100.0%
Painter	13	0	0	0:11:29	100.0%
Tangier	1	0	0	0:07:46	100.0%
System Totals	103	2	5	0:35:08	98.1%

EMS - Performance Measure Data						
Response District	Total Calls in District	Greater than 20 min. Response Time	Longest Response Time	Calls Handled by other agency	Station Benchmark Compliance %	Overall Station Reliability %
Greenbackville	15	5	0:22:15	11	66.7%	26.7%
Chincoteague	113	2	0:24:24	7	98.2%	93.8%
Saxis	9	0	0:12:13	2	100.0%	77.8%
Bloxom	42	0	0:19:38	0	100.0%	100.0%
Parksley	98	1	0:22:26	10	99.0%	89.8%
Onancock	92	0	0:15:50	6	100.0%	93.5%
Melfa	41	0	0:19:13	3	100.0%	92.7%
Wachapreague (Painter)	47	3	0:25:05	4	93.6%	91.5%
Oak Hall	106	3	0:30:59	17	97.2%	84.0%
Tangier	13	0	0:11:51	0	100.0%	100.0%
Community (Exmore)	9	0	0:17:55	0	100.0%	100.0%
System Totals	585	14	0:30:59	60	97.6%	89.7%

EMS Mutual Aid Data		Station Giving Aid														
Station Receiving Aid		Greenbackville	Chincoteague	Saxis	Bloxom	Parksley	Onancock	Melfa	Wachapreague/Painter	Oak Hall	Community (Exmore)	Northampton	Wallops	NORS	2nd Call	3rd Call
		Greenbackville									10				1	10
Chincoteague									6				1	3	4	
Saxis									2					2		
Bloxom																
Parksley				5		4			1					1	9	
Onancock							5	1						2	4	
Melfa							3							1	2	
Wachapreague (Painter)							3			1				2	2	
Oak Hall		2	4		11									6	11	
Community (Exmore)																
Northampton Co.																
Wallops																
Totals		2	4	0	16	0	7	8	1	19	1	0	2	24	32	4

Transport Destination			
Hospital Destination by Unit		Riverside - Shore Memorial	Other
		Greenbackville	1
Chincoteague	17	49	
Saxis	4	4	
Bloxom	36	2	
Parksley	64		
Onancock	56		
Melfa	32		
Wachapreague (Painter)	33		
Oak Hall	43	19	1
Wallops	1	1	
Totals	287	79	1

Benchmark = The Accomack County Board of Supervisors established a 20 minute standard for emergency response.

NORS = No Response by station or the call was handled by another station or agency.

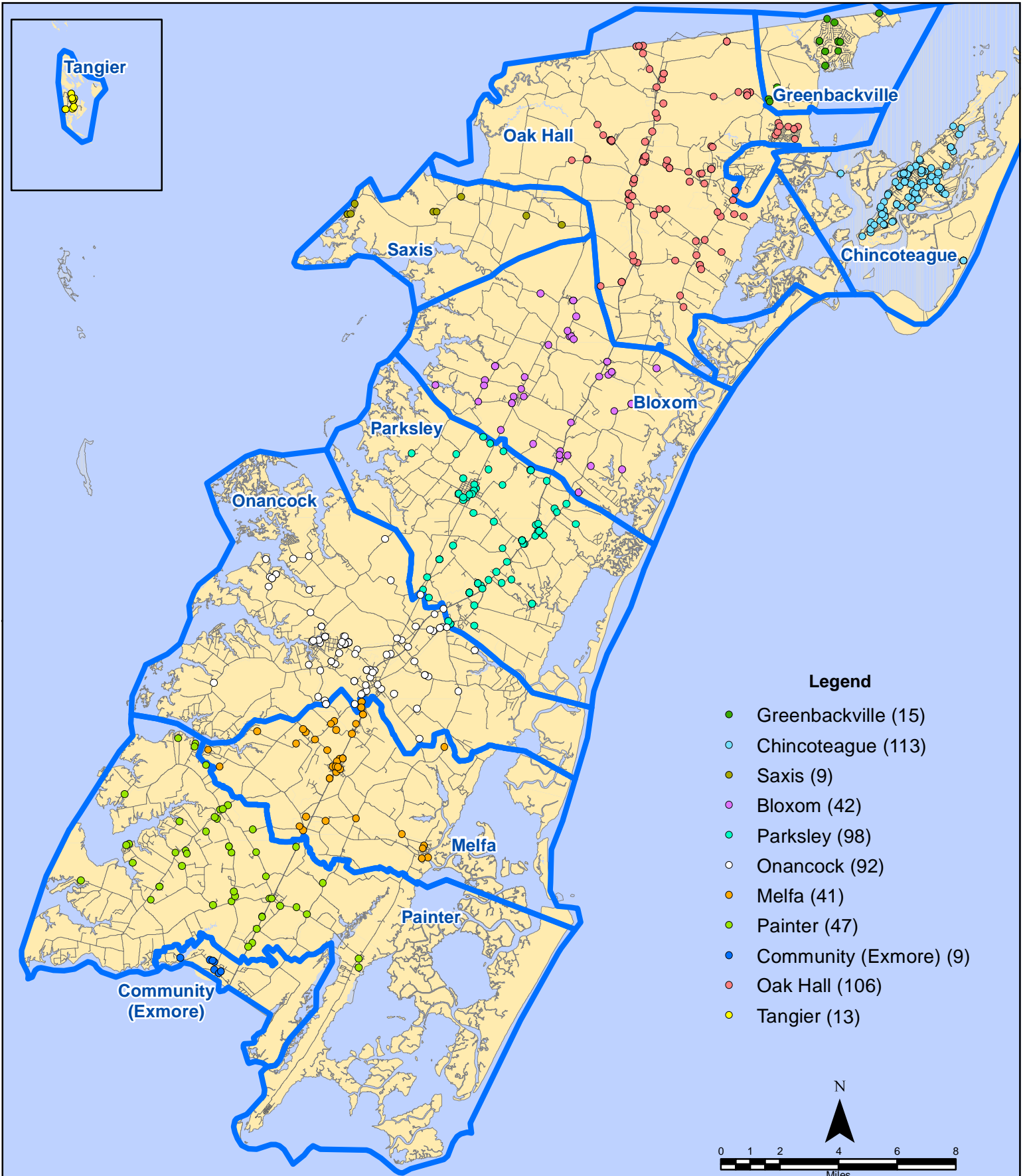
2nd Call = 2nd ambulance call received while first ambulance was on another call.

3rd Call = 3rd ambulance call received while first & second ambulances were on other calls.

* This data excludes F1 Med (Medical Assist) calls in the Fire Data.

This information was prepared using data supplied by the Eastern Shore of Virginia 911 Center. This information is original incident data only and may not be representative of all units and/or stations who responded to an incident.

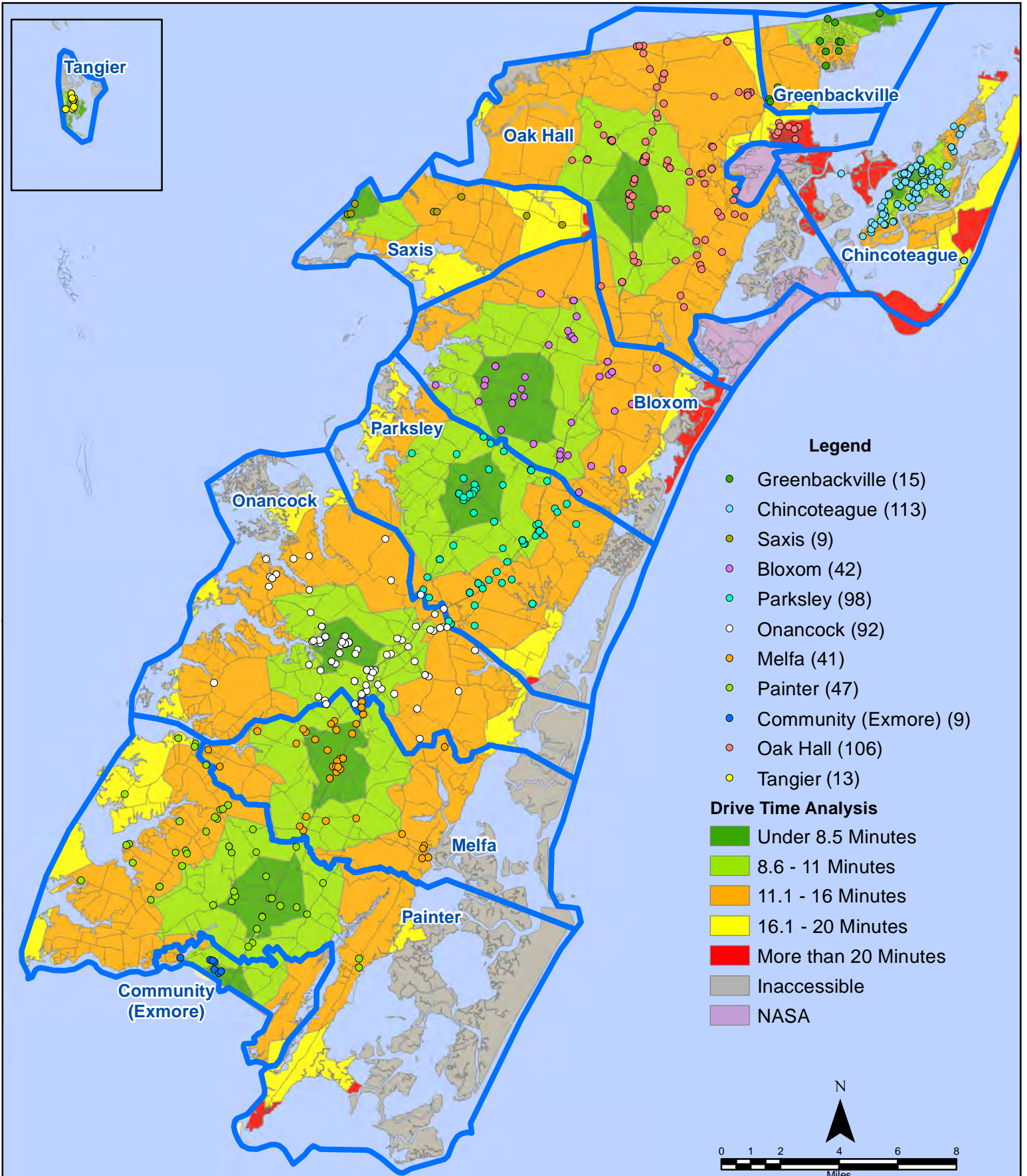
August 2018 EMS Calls By District



All points are plotted using X and Y coordinates provided by the ESVA 911 Center.
Points may be plotted over one another when they are in close proximity.

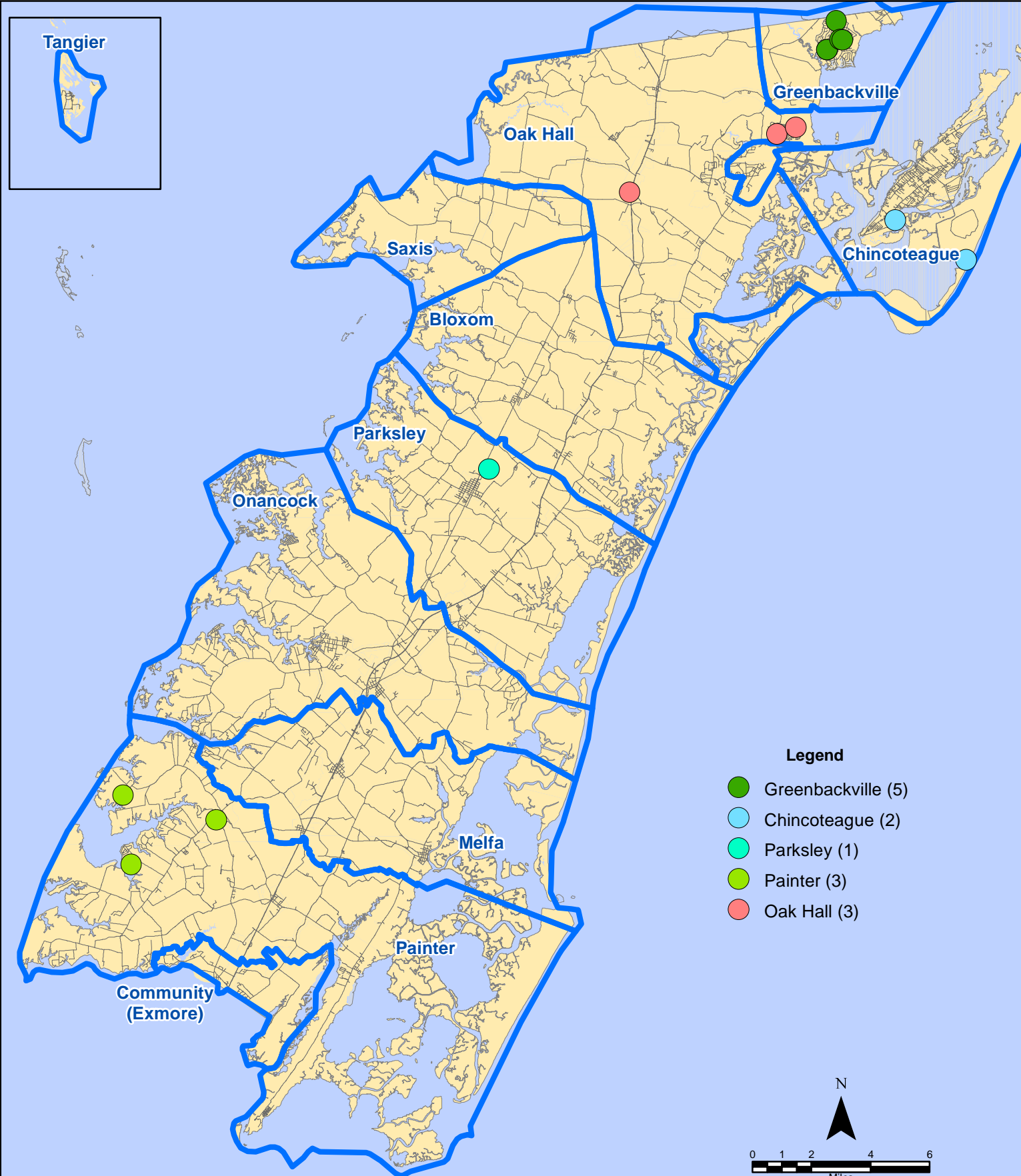
Map Prepared by the Accomack County Department of Building, Planning & Economic Development using data from the ESVA 911 Center.- September 6, 2018

August 2018 EMS Calls By District



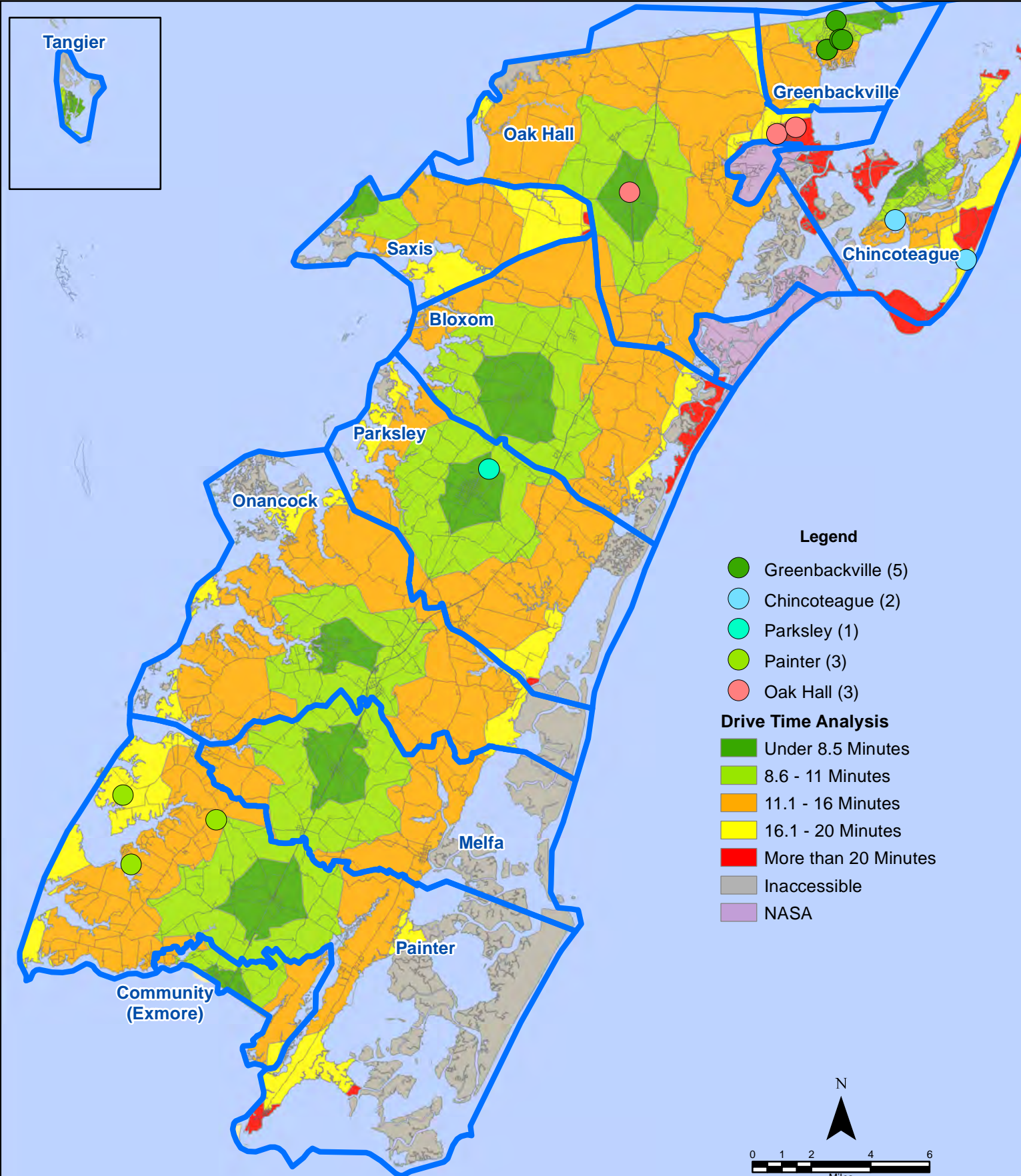
All points are plotted using X and Y coordinates provided by the ESVA 911 Center. Points may be plotted over one another when they are in close proximity.

August 2018 EMS Calls With Response Time Greater Than 20 Mins.



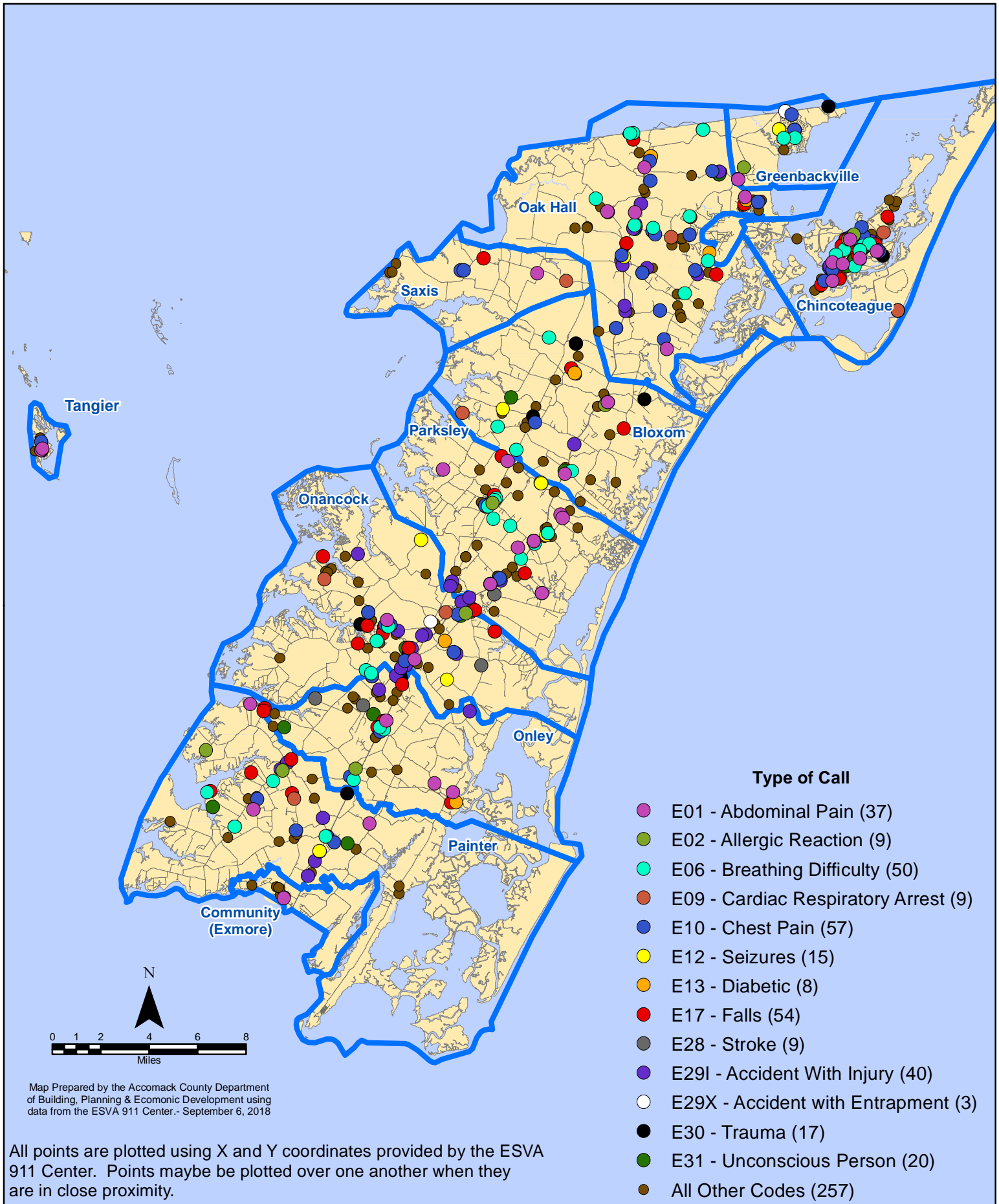
All points are plotted using X and Y coordinates provided by the ESVA 911 Center. Points may be plotted over one another when they are in close proximity.

August 2018 EMS Calls With Response Time Greater Than 20 Mins.

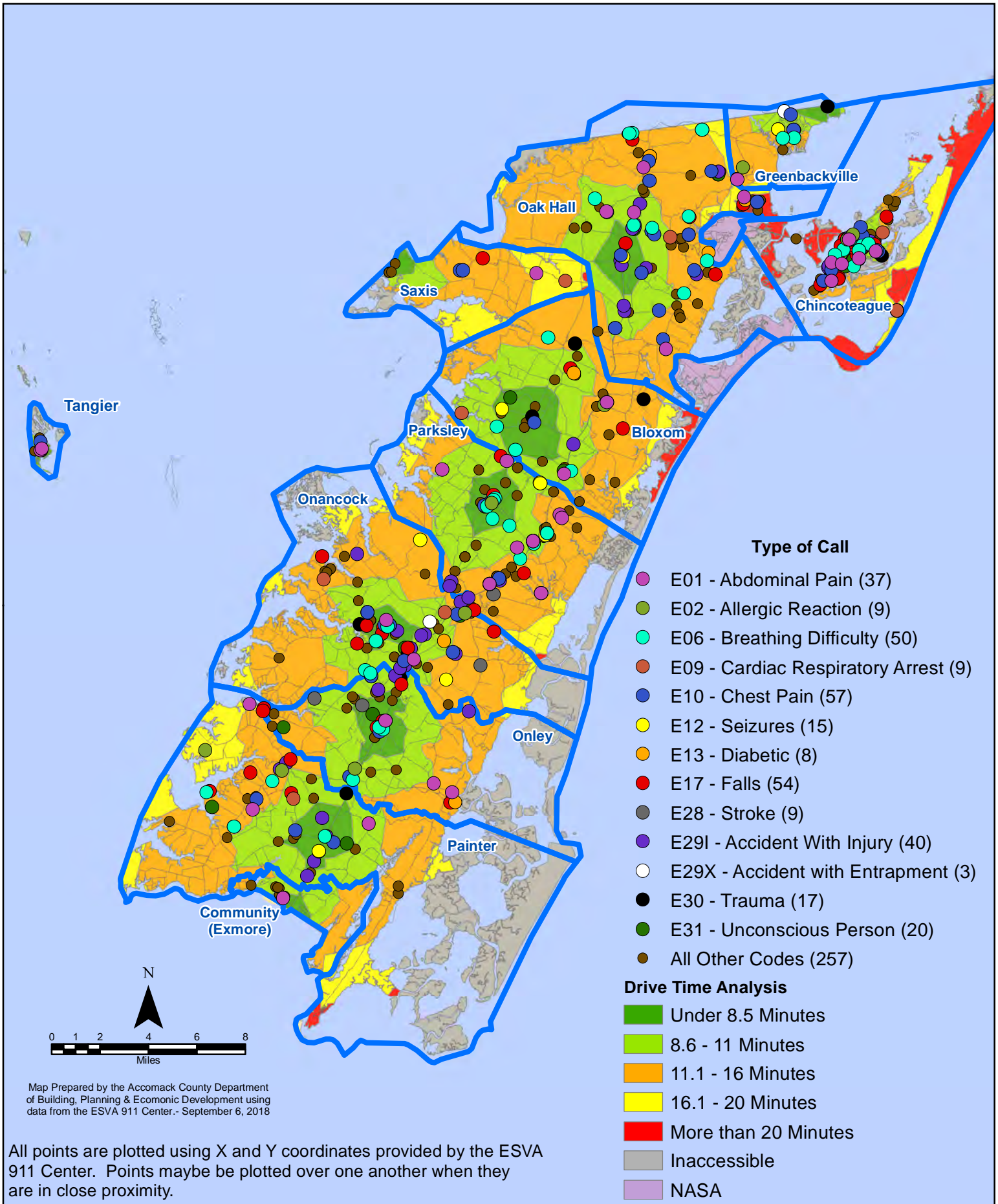


All points are plotted using X and Y coordinates provided by the ESVA 911 Center. Points may be plotted over one another when they are in close proximity.

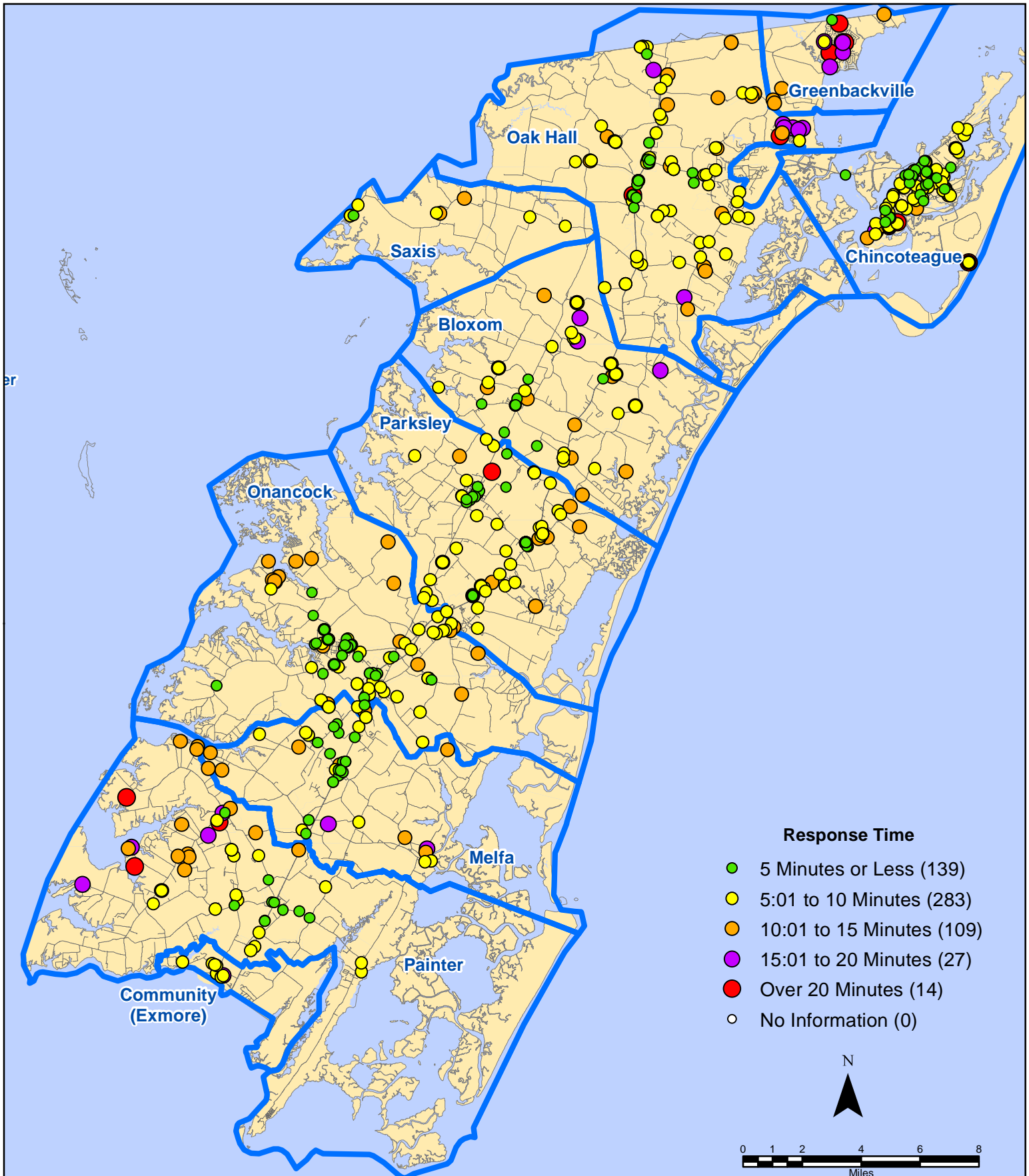
August 2018 EMS Calls By Type



August 2018 EMS Calls By Type



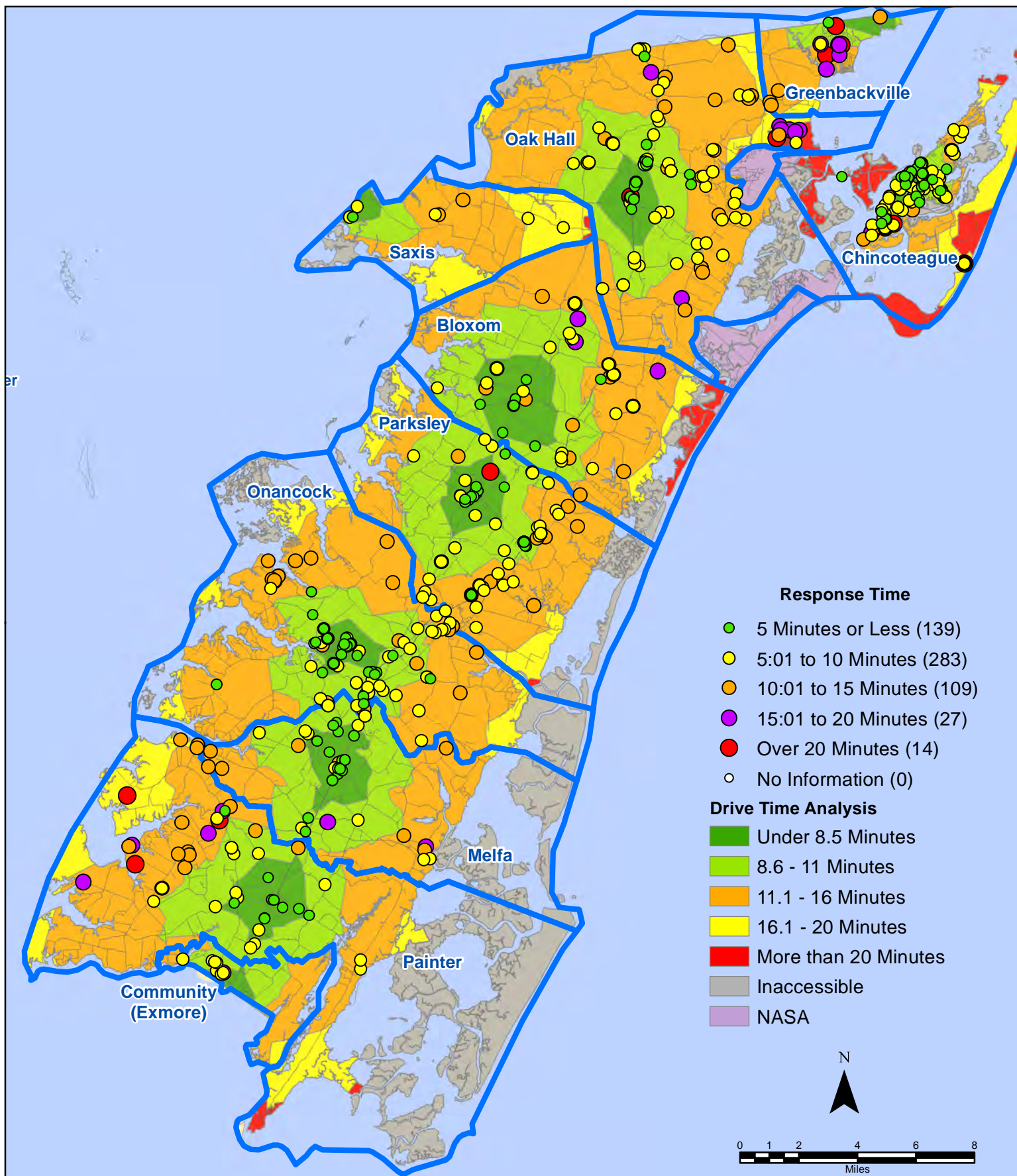
August 2018 EMS Calls By Response Time



All points are plotted using X and Y coordinates provided by the ESVA 911 Center.
Points may be plotted over one another when they are in close proximity.

Map Prepared by the Accomack County Department
of Building, Planning & Economic Development using
data from the ESVA 911 Center.- September 6, 2018

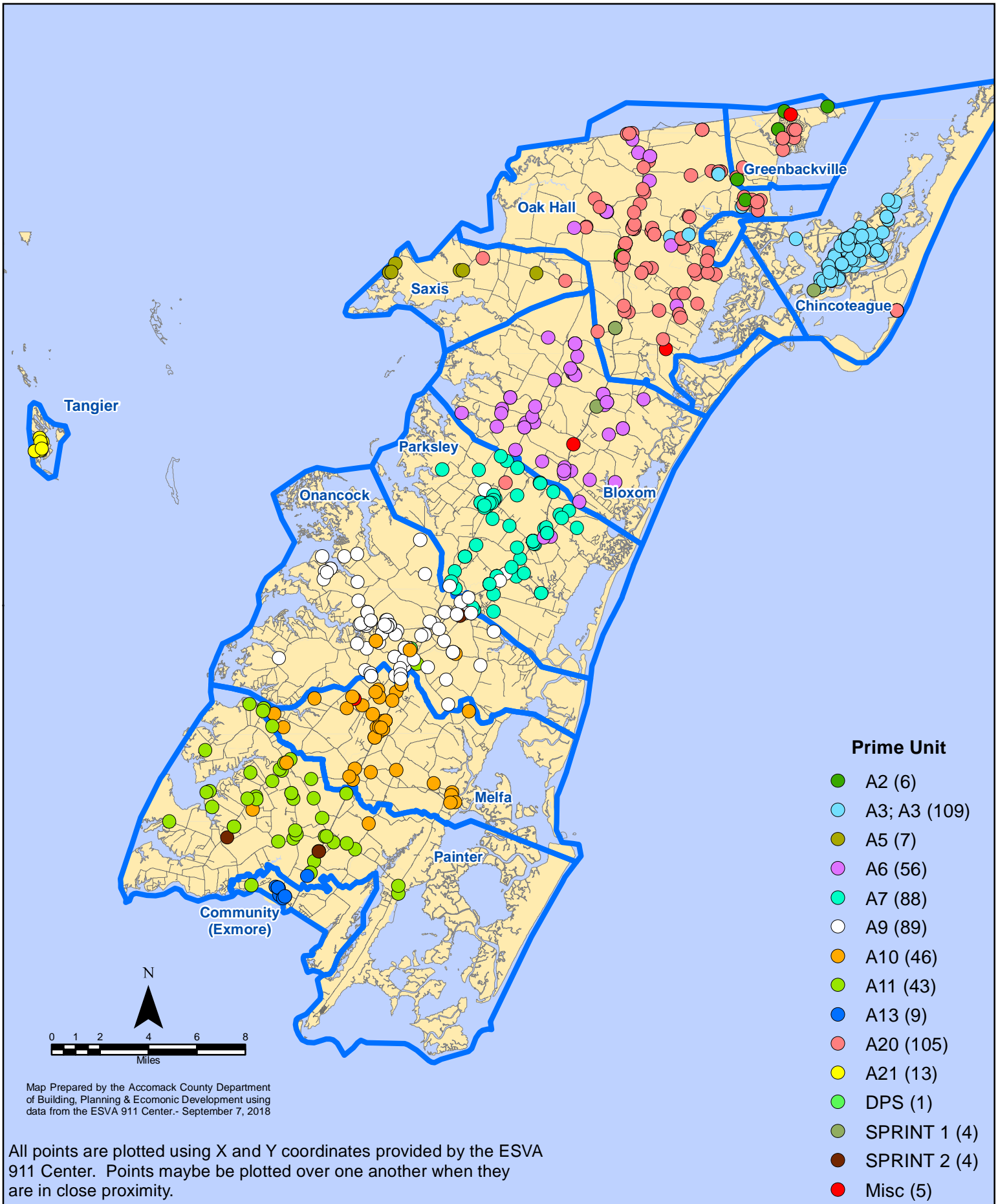
August 2018 EMS Calls By Response Time



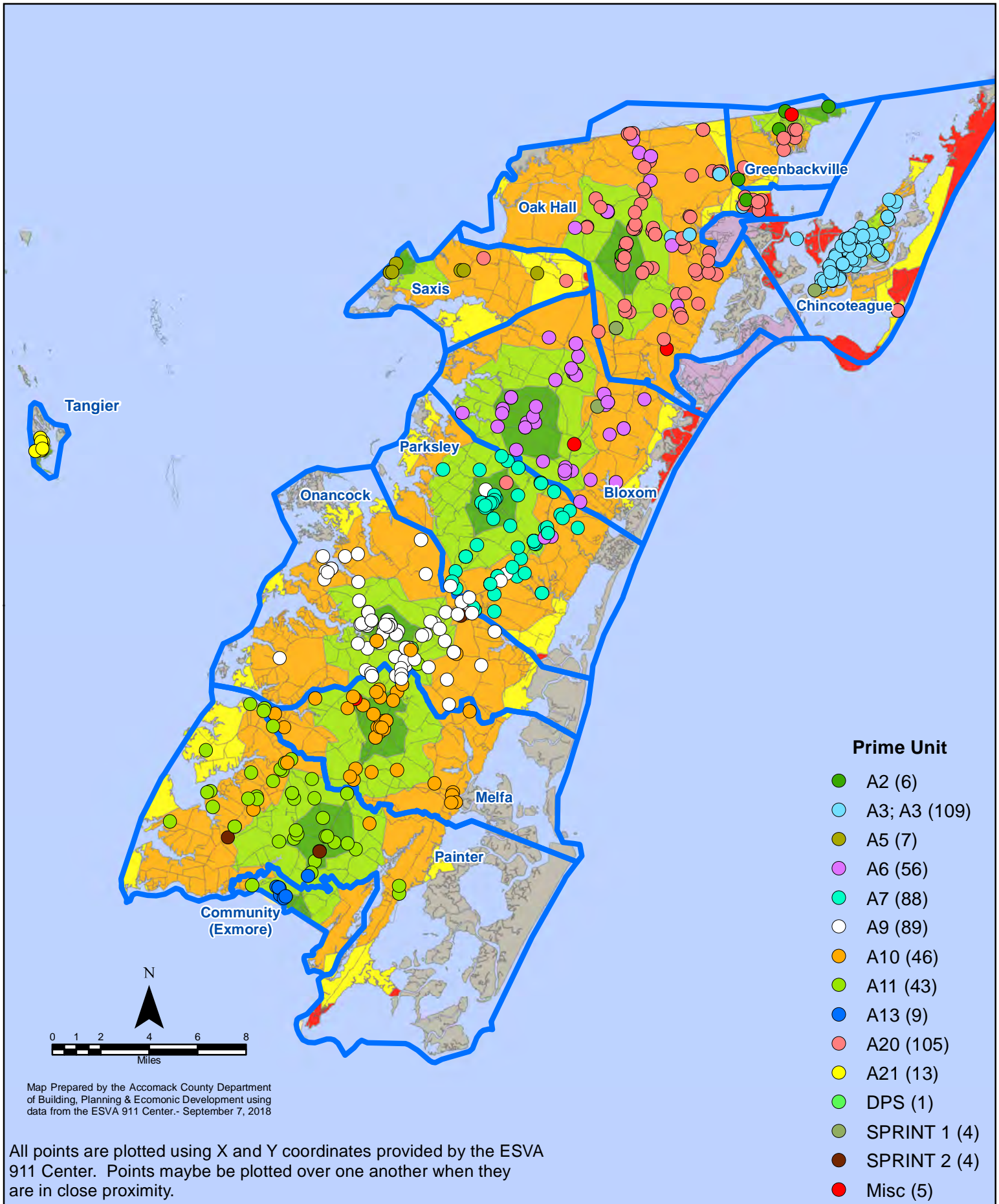
All points are plotted using X and Y coordinates provided by the ESVA 911 Center. Points may be plotted over one another when they are in close proximity.

Map Prepared by the Accomack County Department of Building, Planning & Economic Development using data from the ESVA 911 Center.- September 6, 2018

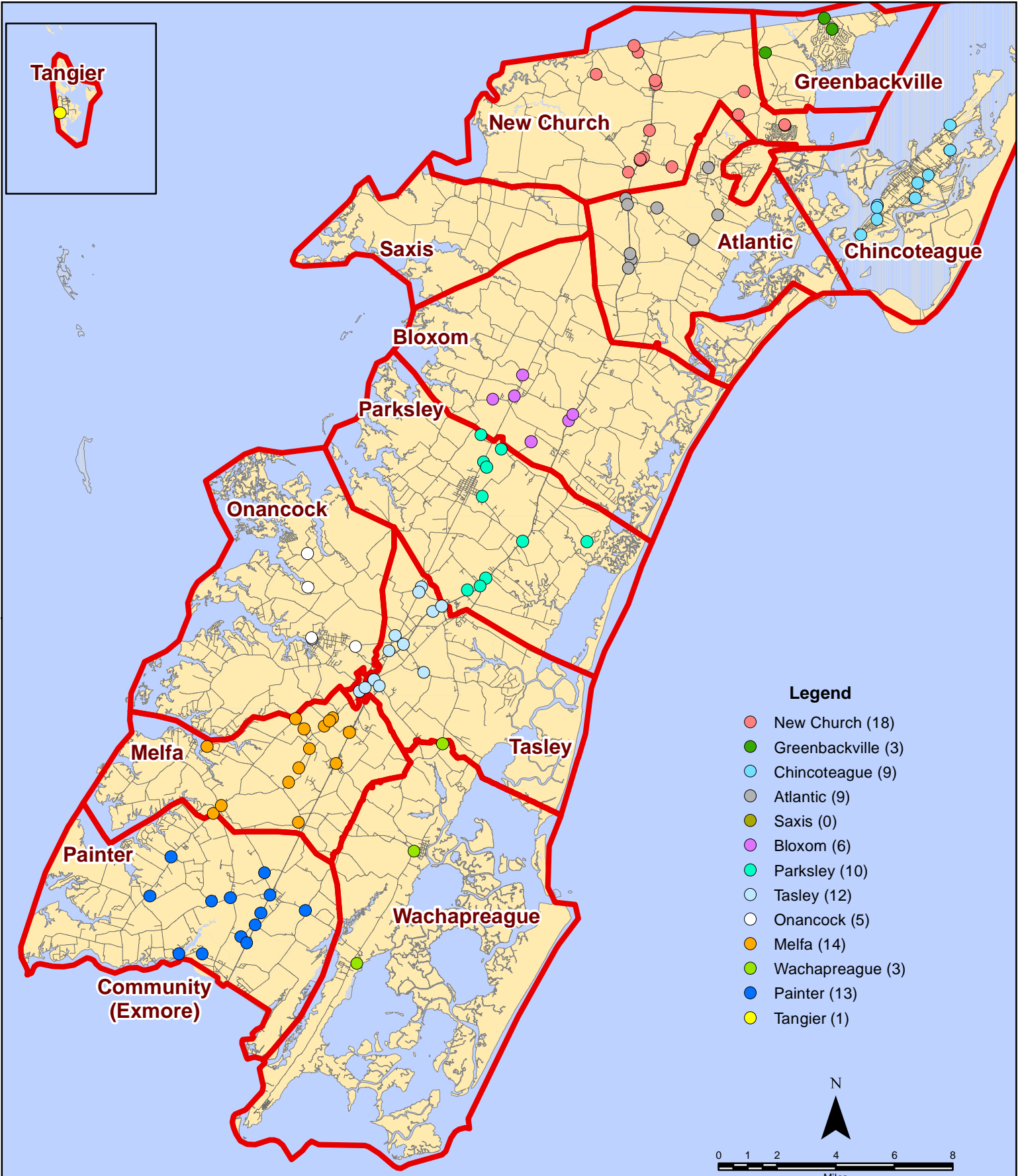
August 2018 EMS Calls By Prime Unit



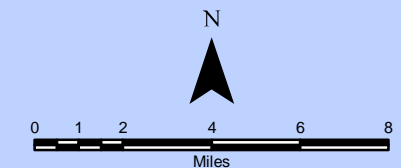
August 2018 EMS Calls By Prime Unit



August 2018 Fire Calls By District

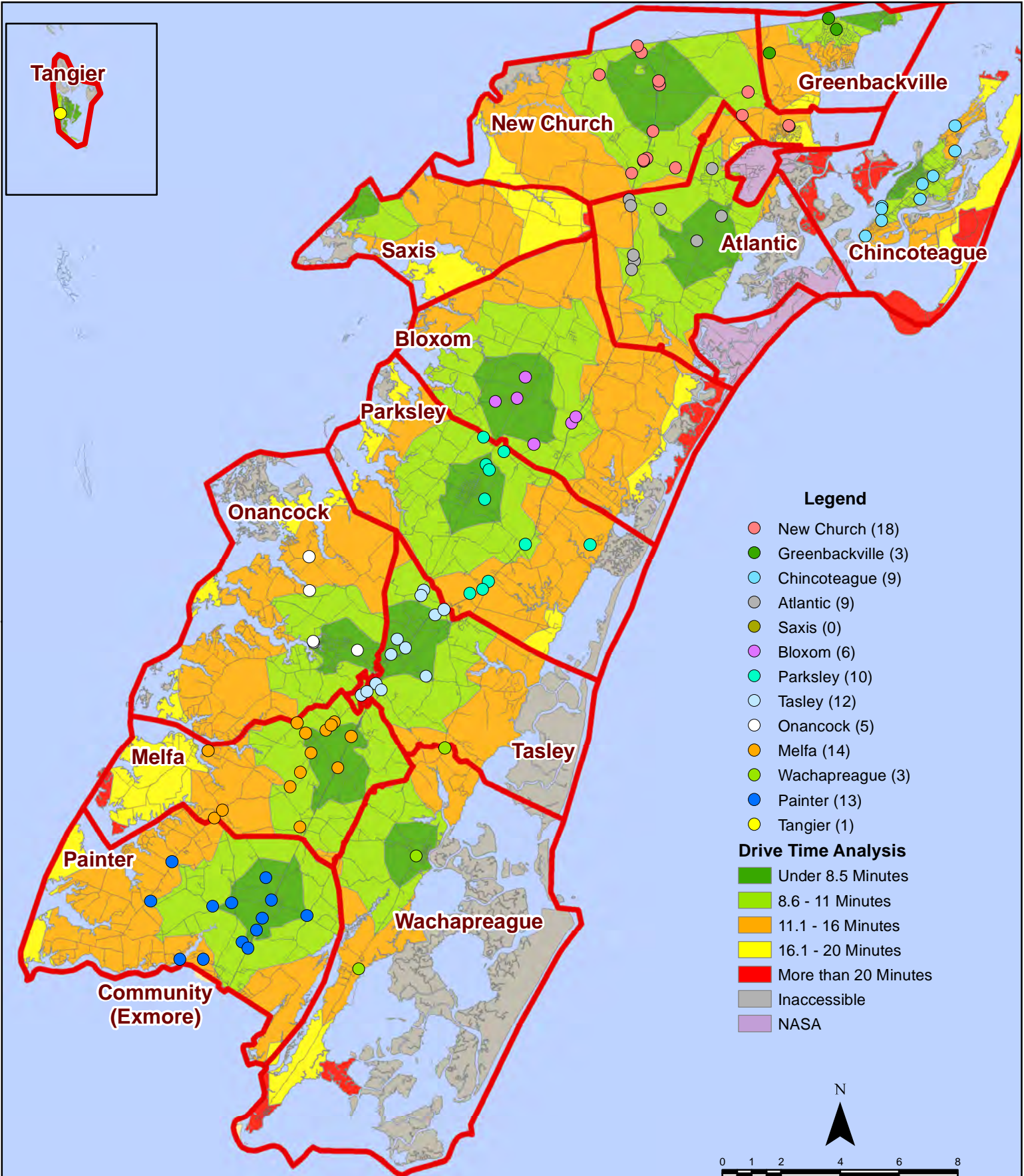


All points are plotted using X and Y coordinates provided by the ESVA 911 Center. Points may be plotted over one another when they are in close proximity.

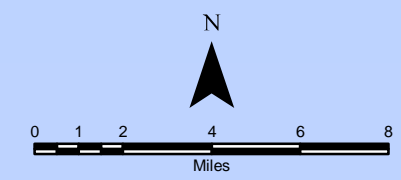


Map Prepared by the Accomack County Department of Building, Planning & Economic Development using data from the ESVA 911 Center. - September 6, 2018

August 2018 Fire Calls By District

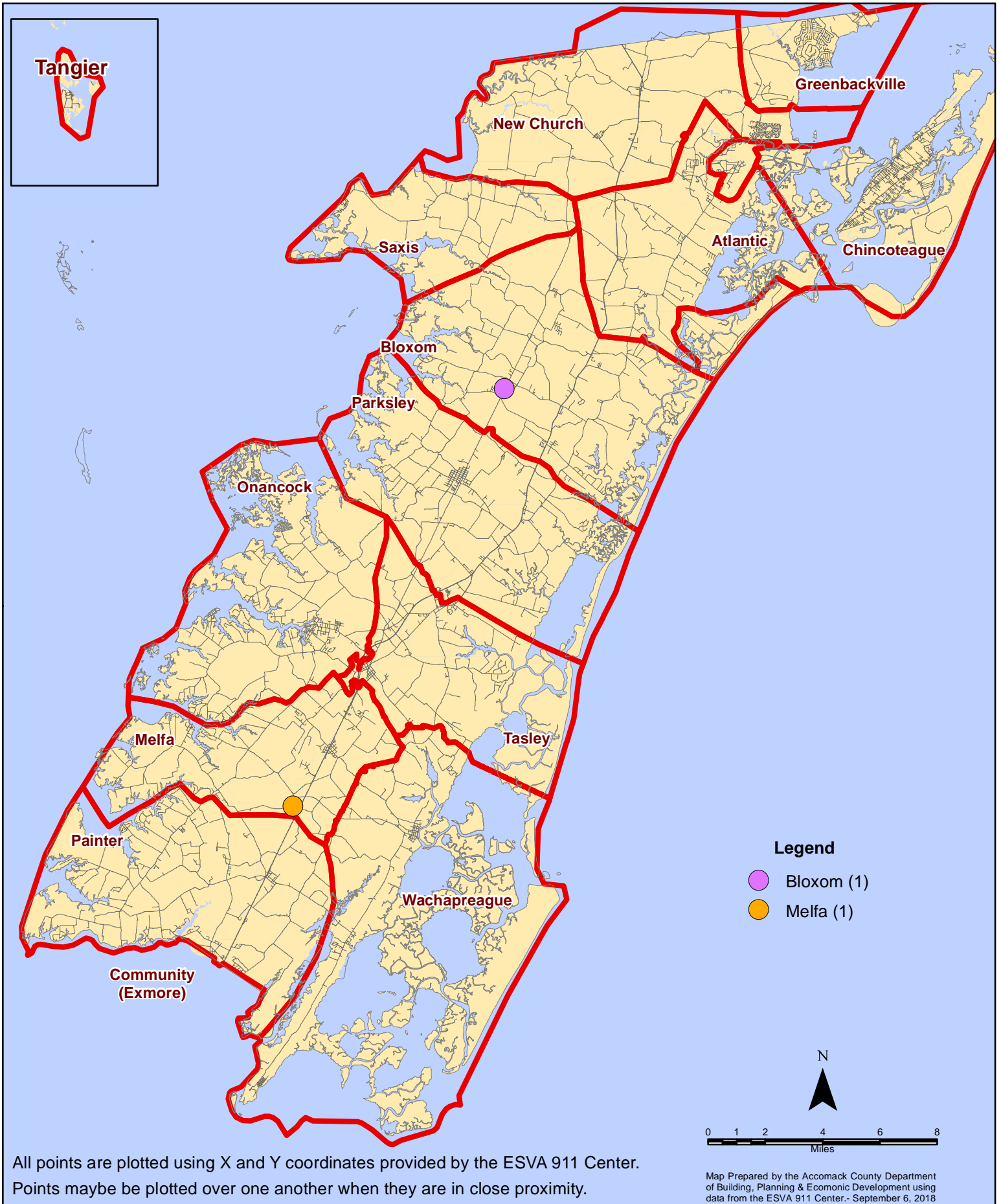


All points are plotted using X and Y coordinates provided by the ESVA 911 Center. Points may be plotted over one another when they are in close proximity.



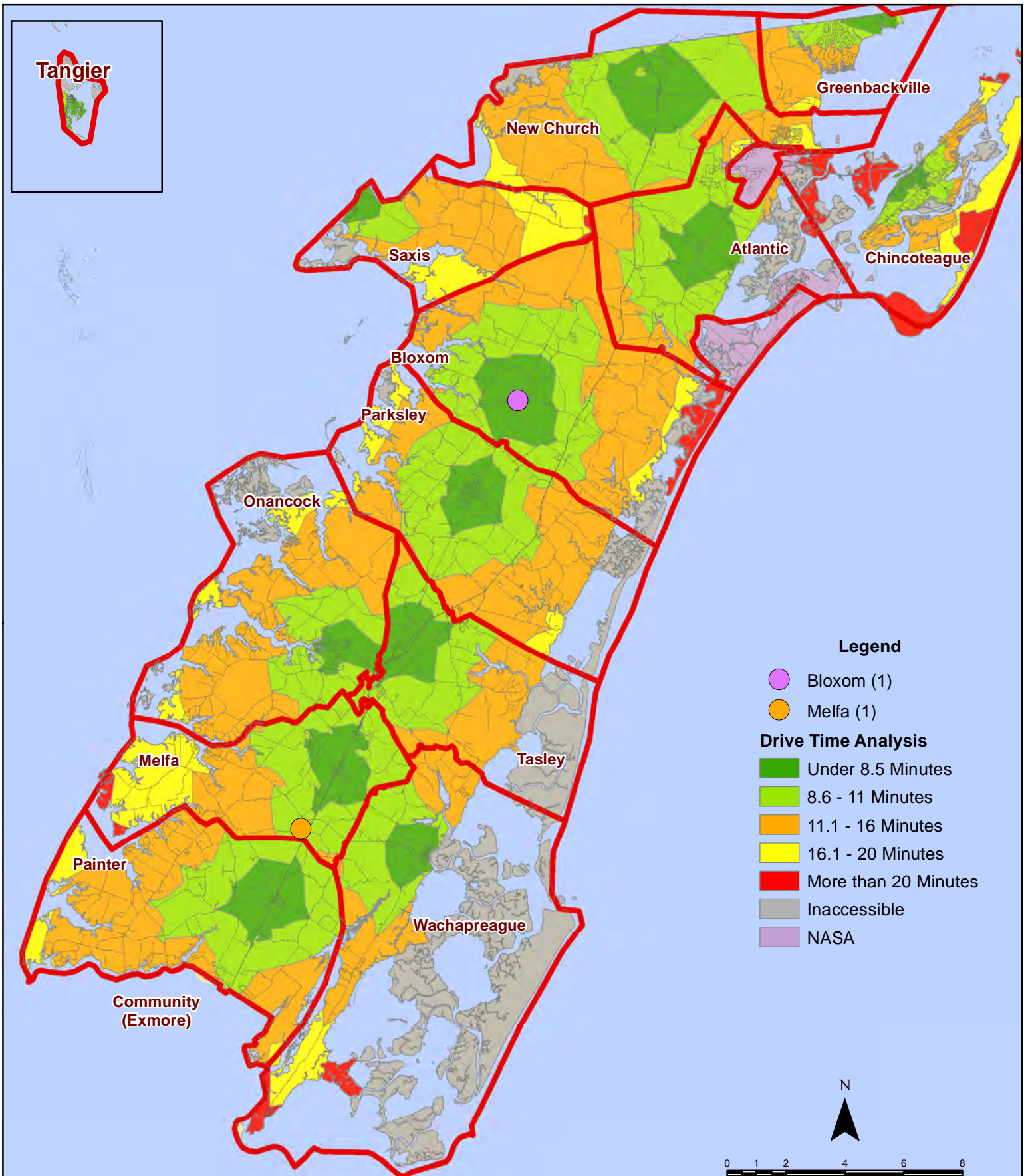
Map Prepared by the Accomack County Department of Building, Planning & Economic Development using data from the ESVA 911 Center. - September 6, 2018

August 2018 Fire Calls With Response Time Greater Than 20 Mins.



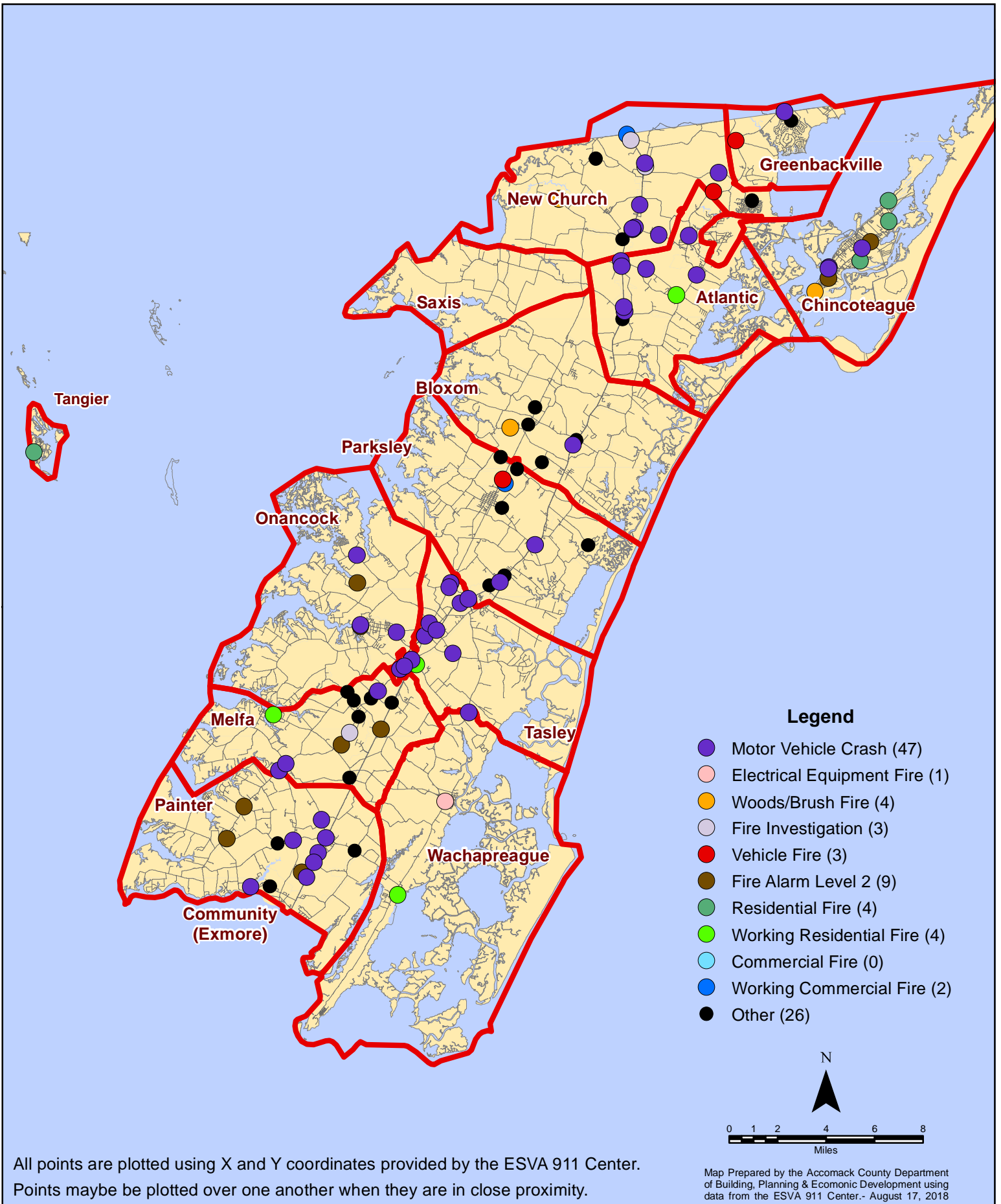
All points are plotted using X and Y coordinates provided by the ESVA 911 Center. Points may be plotted over one another when they are in close proximity.

August 2018 Fire Calls With Response Time Greater Than 20 Mins.



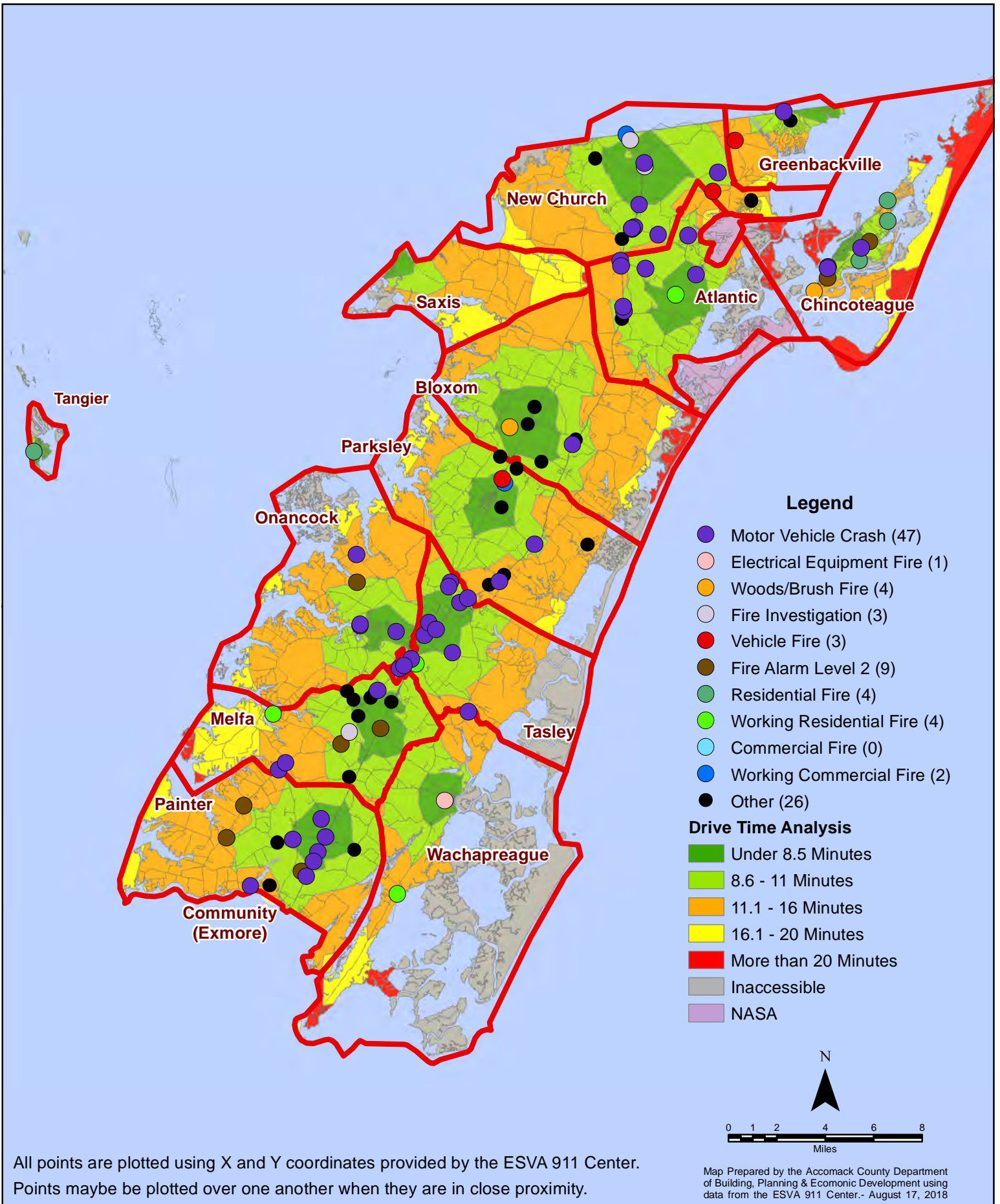
All points are plotted using X and Y coordinates provided by the ESVA 911 Center. Points may be plotted over one another when they are in close proximity.

August 2018 Fire Calls By Type



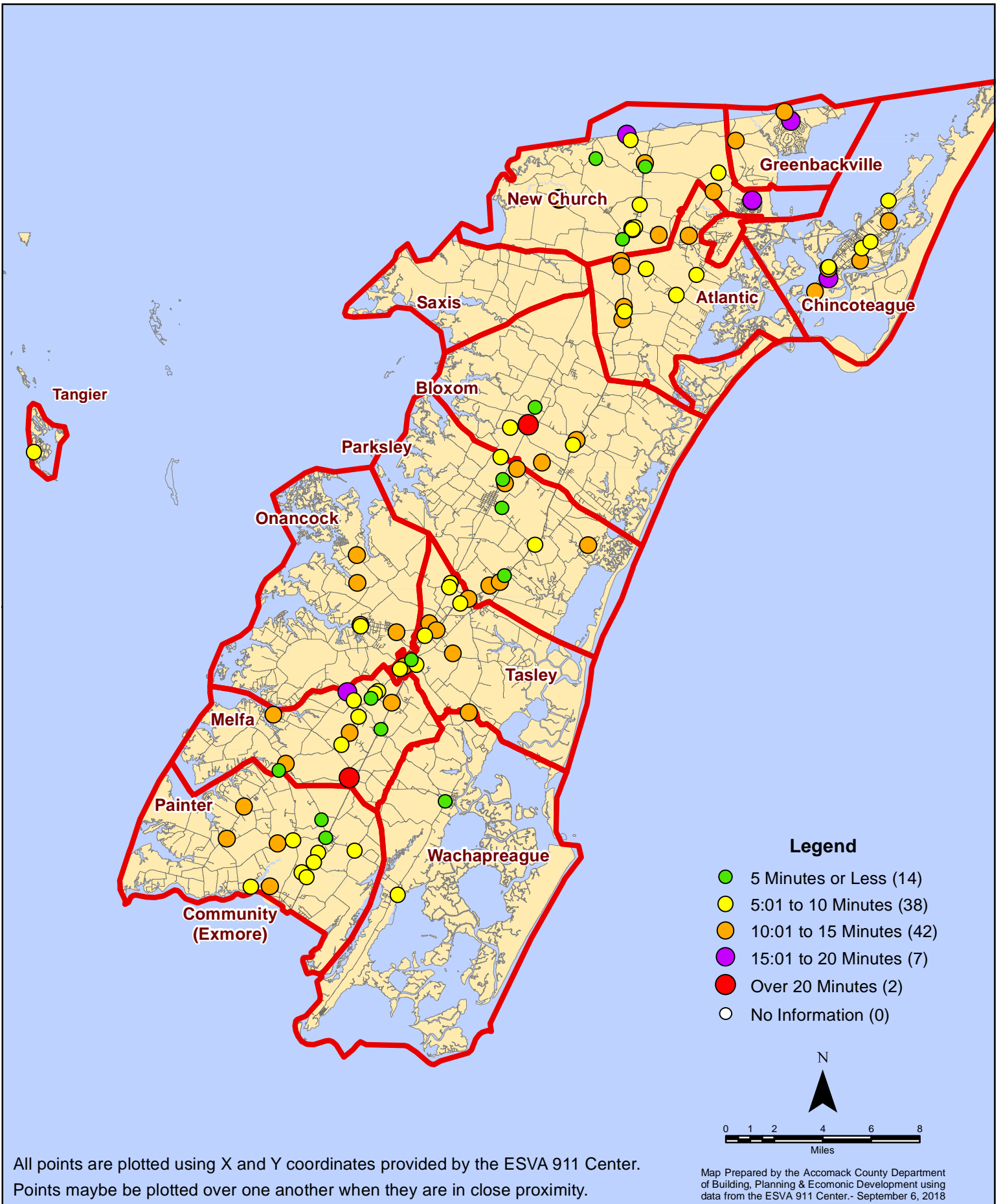
All points are plotted using X and Y coordinates provided by the ESVA 911 Center. Points may be plotted over one another when they are in close proximity.

August 2018 Fire Calls By Type



All points are plotted using X and Y coordinates provided by the ESVA 911 Center. Points may be plotted over one another when they are in close proximity.

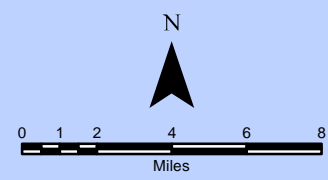
August 2018 Fire Calls By Response Time



All points are plotted using X and Y coordinates provided by the ESVA 911 Center. Points may be plotted over one another when they are in close proximity.

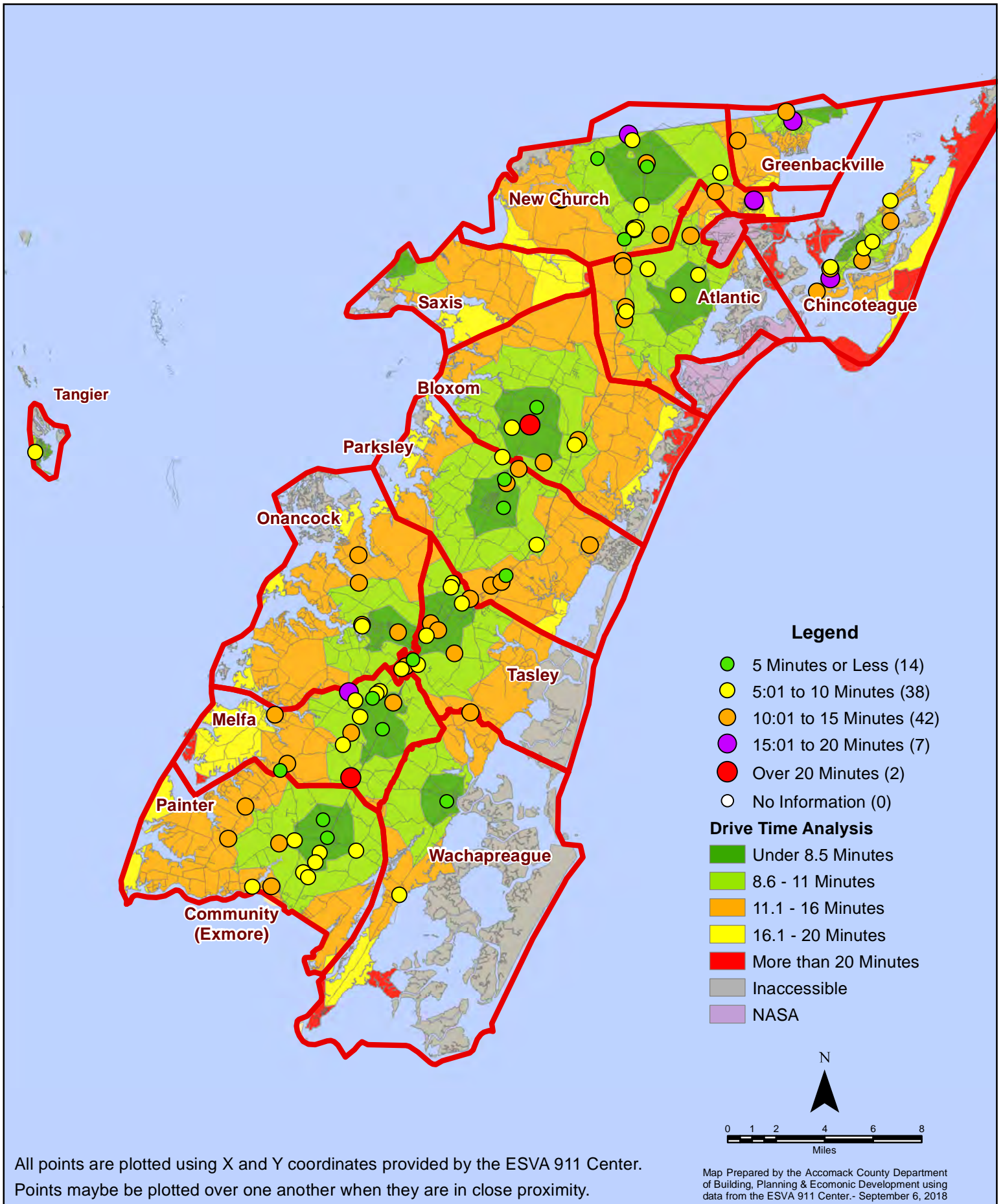
Legend

- 5 Minutes or Less (14)
- 5:01 to 10 Minutes (38)
- 10:01 to 15 Minutes (42)
- 15:01 to 20 Minutes (7)
- Over 20 Minutes (2)
- No Information (0)



Map Prepared by the Accomack County Department of Building, Planning & Economic Development using data from the ESVA 911 Center. - September 6, 2018

August 2018 Fire Calls By Response Time



All points are plotted using X and Y coordinates provided by the ESVA 911 Center. Points may be plotted over one another when they are in close proximity.